

Institutional Effectiveness Moorpark, Oxnard, and Ventura Colleges

*Ventura County Community College District
2011/12 through 2014/15*

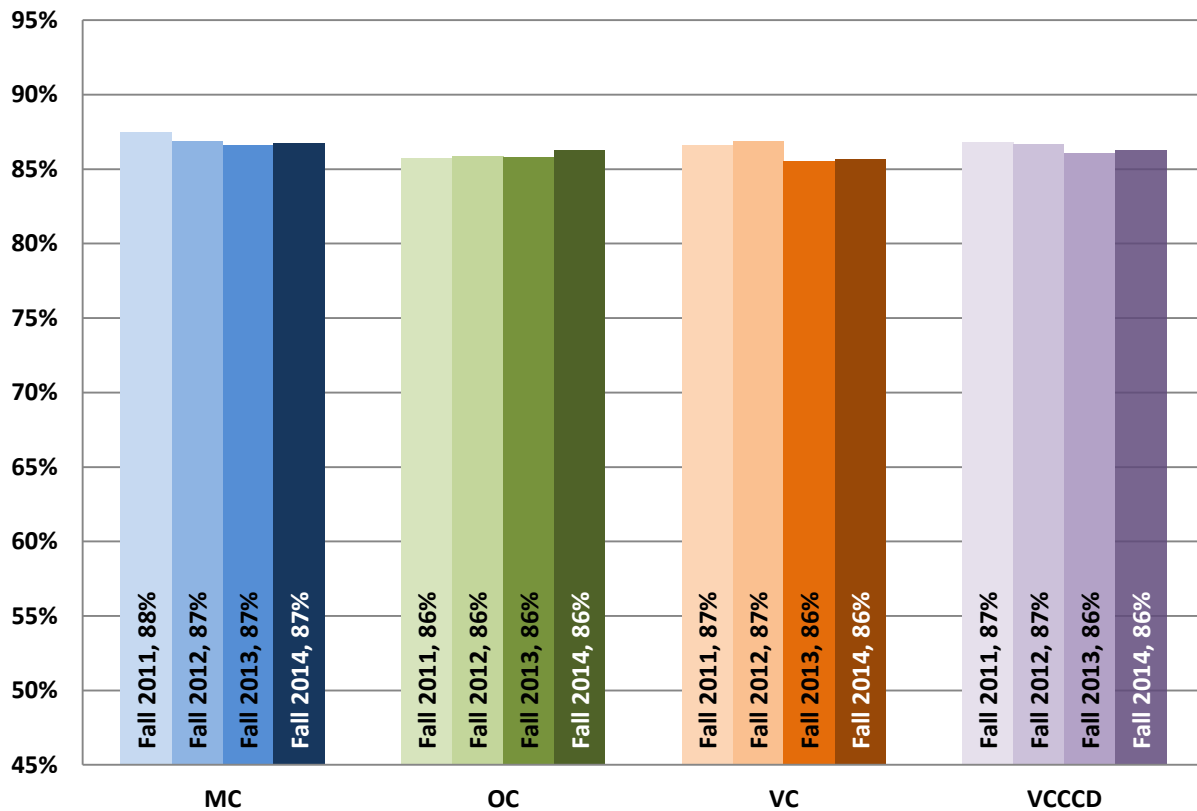
**REPORT PREPARED BY
INSTITUTIONAL RESEARCH ADVISORY COMMITTEE
JUNE 2015**

Table of Contents	
VCCCD Course Completion (Course Retention) Rates	1
VCCCD Course Success Rates	2
VCCCD First-Time Student Term-to-Term Retention (Persistence) Rates	3
Degrees and Certificates Awarded	4
Students Transferring to Four-Year Institutions	4
Three-Year Unduplicated Degree, Certificate, Transfer Outcomes by College	5
Licensure and Certification Pass Rates	6
Automotive	6
Computer Networking	6
Culinary	7
Dental Hygiene	7
Drug and Alcohol Counseling	8
First Responders/Fire Academy	8
Health Science Programs	8
Productivity Rates	9
Student Learning Outcomes / Student Service Unit Outcomes	10
Appendix A: Data Definitions Three-Year Unduplicated Degree, Certificate, Transfer Outcomes	A
Appendix B: Source Information Three-Year Unduplicated Degree, Certificate, Transfer Outcomes	B

VCCCD Course Completion (Course Retention) Rates

Students are considered to have completed their courses if they received a transcript notation of: A, B, C, D, F, CR (Passing grade of Credit), P (Pass), NC (No Credit), NP (Non-Passing) or any Incomplete grade notation (previously known as course retention).

Course Completion Rate - Fall Semesters

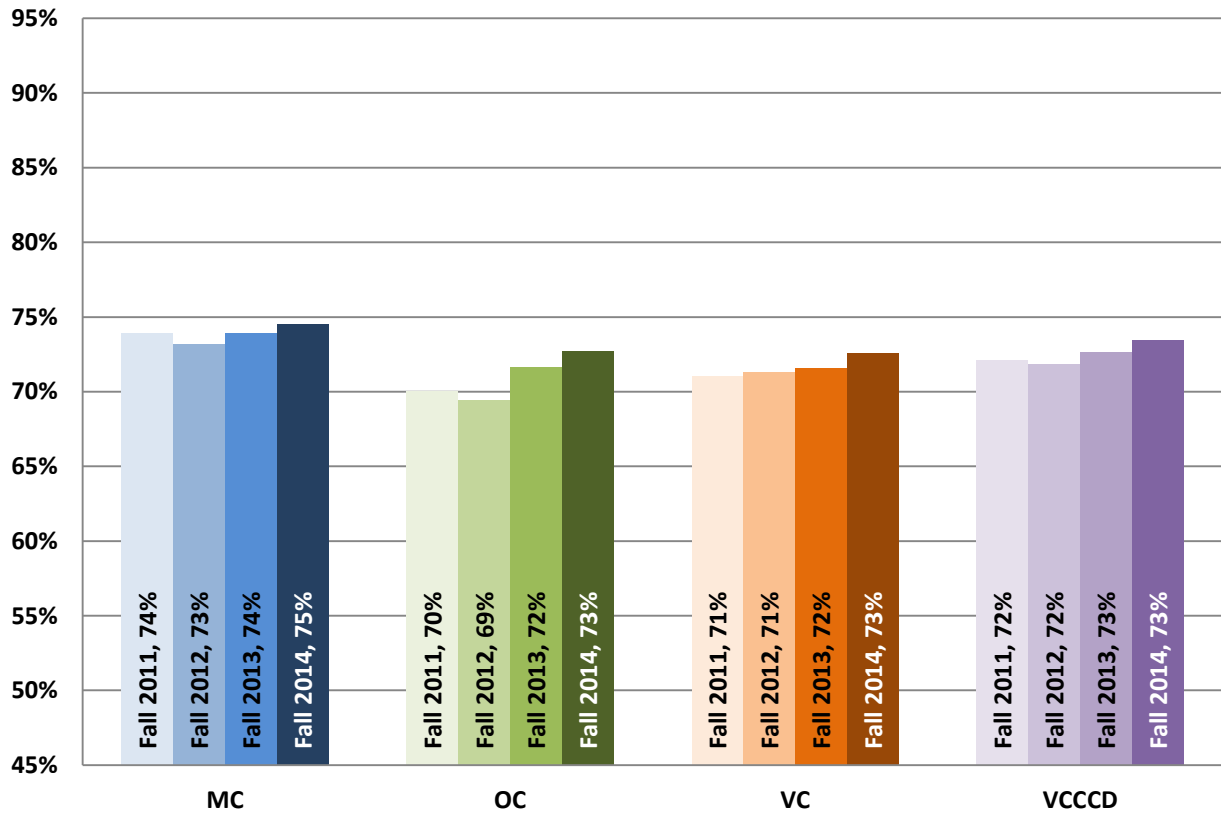


Data Source: Banner, Academic History

VCCCD Course Success Rates

Students are considered to have successfully completed their courses if they received a transcript notation of: A, B, C, CR (Credit), P (Passing), IB (will receive a grade of B if missing work is not submitted within one year), or IC (will receive a grade of C if missing work is not submitted within one year).

Course Success Rate - Fall Semesters

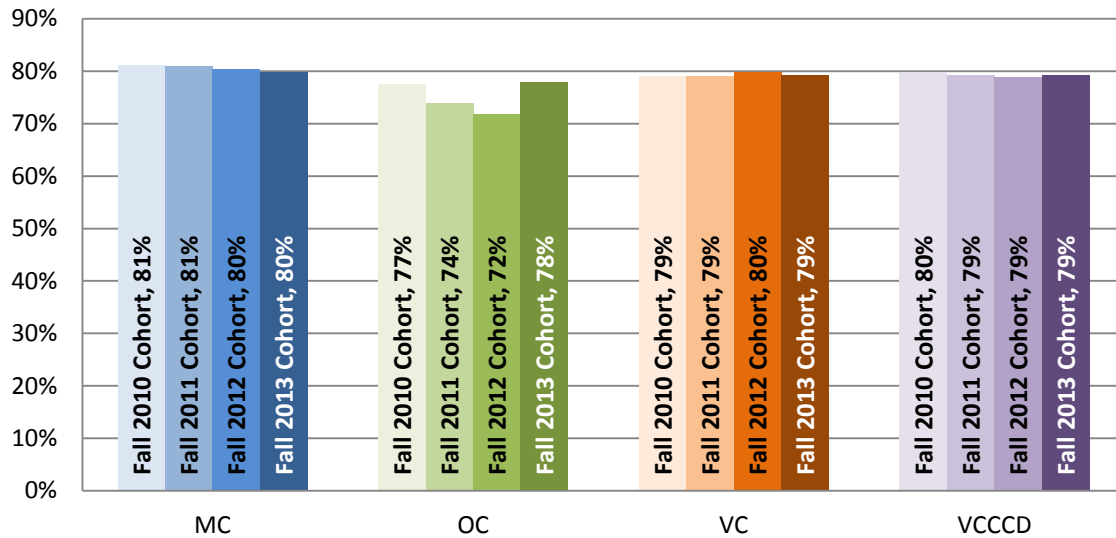


Data Source: Banner, Academic History

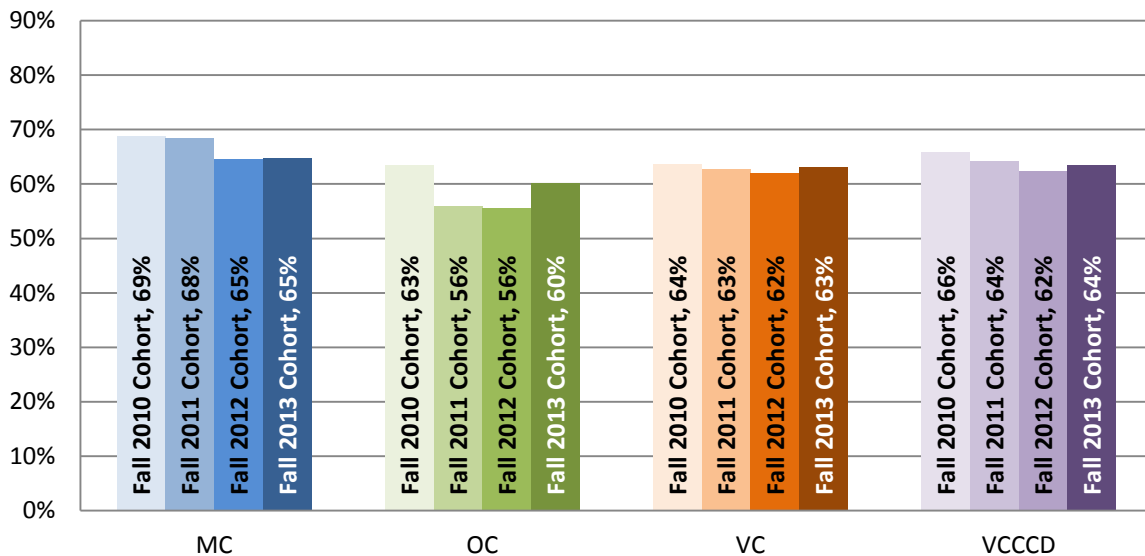
VCCCD First-Time Student Term-to-Term Retention (Persistence) Rates

First-Time Students are considered to have been retained in their course of study if they received any transcript notation in their first fall term enrollment and then received any transcript notation in the subsequent spring semester or subsequent fall semester (previously known as persistence), even if that subsequent semester enrollment was in a different college within VCCCD. First-Time Students include high school graduates *even if they attended VCCCD while concurrently enrolled in high school*.

Retention Fall-to-Spring



Retention Fall-to-Fall



Data Source: Banner, Academic History

Degrees and Certificates Awarded¹

Academic Years/Award	VCCCD	Moorpark	Oxnard	Ventura
2011-12	4,830	2,414	752	1,664
Associates Degrees	2,742	1,193	461	1,088
Certificates	556	208	216	132
Transfer Certification	1,532	1,013	75	444
2012-13	4,401	1,913	820	1,668
Associates Degrees	2,835	1,188	537	1,110
Certificates	528	145	239	144
Transfer Certification	1,038	580	44	414
2013-14	4,369	1,611	906	1,852
Associates Degrees	3,098	1,297	564	1,237
Certificates	613	198	259	156
Transfer Certificates	658	116	83	459

Data Source: 2011-12 Banner, Academic History, 2013-14 from IE data files

Students Transferring to Four-Year Institutions

Academic Years/Transfer Destination	VCCCD	Moorpark	Oxnard	Ventura
2011-12	3,249	1,778	417	1,054
CSU Transfers	1,778	918	235	625
UC Transfers	443	298	24	121
Out-of-State/In-State Private	1,028	562	158	308
2012-13	2,932	1,562	374	996
CSU Transfers	1,458	736	178	544
UC Transfers	432	291	17	124
Out-of-State/In-State Private	1,042	535	179	328
2013-14	3,199	1,729	420	1,050
CSU Transfers	1,793	915	264	614
UC Transfers	462	318	24	120
Out-of-State/In-State Private	944	496	132	316

Data Source: CCCC; CSU Analytical Studies; UCOP Institutional Research

¹ Degrees and Certificates awarded include duplicated outcomes. For example, a student may have received an Associate's Degree as well as Certificate and Transfer Certification.

Three-Year Unduplicated Degree, Certificate, Transfer Outcomes by College

	VCCCD	Moorpark	Oxnard	Ventura
FALL 2009 COHORT	7,694	3,481	1,439	2,996
Degrees and Certificates	9.6%	9.1%	9.7%	10.7%
Transfer Certifications	3.1%	5.3%	0.6%	1.7%
Transfer without Degree or Certificate	10.7%	15.1%	4.6%	8.4%
Transfer Ready	3.0%	3.4%	2.4%	2.7%
Transfer to Another Community College	6.3%	7.7%	4.2%	5.8%
Still Enrolled	28.5%	26.3%	30.2%	30.5%
Not Enrolled / Unknown Progress	38.8%	33.3%	48.2%	40.1%

	VCCCD	Moorpark	Oxnard	Ventura
FALL 2010 COHORT	6,729	3,163	1,288	2,495
Degrees and Certificates	9.5%	8.6%	10.9%	10.1%
Transfer Certifications	2.8%	4.0%	0.4%	2.4%
Transfer without Degree or Certificate	14.8%	21.1%	7.0%	10.9%
Transfer Ready	1.6%	2.0%	1.1%	1.4%
Transfer to Another Community College	6.7%	8.1%	3.6%	6.3%
Still Enrolled	31.8%	28.5%	36.3%	33.6%
Not Enrolled / Unknown Progress	32.9%	27.7%	40.8%	35.2%

	VCCCD	Moorpark	Oxnard	Ventura
FALL 2011 COHORT	6,669	3,185	1,133	2,577
Degrees and Certificates	11.6%	11.6%	11.0%	12.0%
Transfer Certifications	2.4%	3.6%	0.6%	1.7%
Transfer without Degree or Certificate	13.3%	19.6%	6.2%	9.0%
Transfer Ready	0.3%	0.0%	0.0%	0.9%
Transfer to Another Community College	7.6%	9.3%	4.9%	6.9%
Still Enrolled	31.5%	29.2%	35.5%	31.9%
Not Enrolled / Unknown Progress	33.3%	26.7%	41.6%	37.5%

Data Source: Banner, Academic History; National Student Clearinghouse.
See Appendix B for detailed criteria.

Licensure and Certification Pass Rates

(As reported on the ACCJC Annual Reports from each college)

Automotive ²			
	2011-2012	2012-2013	2013-2014
ASE A6 Alternate Exam – Electrical Systems			
Oxnard College	82%	100%	100%
ASE A8 Alternate Exam – Engine Performance			
Oxnard College	100%	100%	100%
Safety Pollution Prevention-Mechanical Safety			
Oxnard College	100%	100%	100%
BAR Smog Tech Update Cert			
Oxnard College	100%	96.5%	100%
BAR Enhanced Clean Air Car			
Oxnard College	100%	-	100%

Computer Networking ³			
	2011-2012	2012-2013	2013-2014
CompTIA A+ 601 Essentials			
Oxnard College	100%	88%	86%
CompTIA A+ 602 Prac Appl			
Oxnard College	100%	-	93%
CompTIA Network +			
Oxnard College	100%	100%	100%
CompTIA Security +			
Oxnard College	92%	90%	92%
CompTIA Linux +			
Oxnard College	100%	-	-
Cisco CCENT/CCNA			
Oxnard College	80%	75%	75%
Comp Networking Overall Pass			
Oxnard College	94%	-	90%

² Oxnard College, Career and Technical Education

³ Oxnard College, Career and Technical Education

Culinary ⁴			
National Restaurant Association (NRA)	2011-2012	2012-2013	2013-2014
NRA Certificate: Controlling Costs			
Oxnard College	-	100%	-
NRA Certificate: Customer Service			
Oxnard College	-	-	86%
NRA Certificate: Food and Beverage Management			
Oxnard College	85%	-	64%
NRA Certificate: Hospitality Accounting			
Oxnard College	-	-	100%
NRA Certificate: Hospitality HR Mgmt & Supervision			
Oxnard College	92%	100%	-
NRA Certificate: Inventory/Purchasing			
Oxnard College	-	100%	-
NRA Certificate: Management			
Oxnard College	96%	100%	73%
NRA Certificate: Marketing			
Oxnard College	-	100%	100%
NRA Certificate: Nutrition			
Oxnard College	-	100%	66%
NRA Certificate: Serv Safe			
Oxnard College	74%	90%	65%

Dental Hygiene ⁵			
National Board of Dental Hygiene Examination	2011-2012	2012-2013	2013-2014
Oxnard College	100%	100%	cohort not tested
California Registered Dental Hygiene Examination			
Oxnard College	100%	100%	cohort not tested
Western Regional Examining Board (WREB)			
Oxnard College	100%	100%	cohort not tested

⁴ Oxnard College, Career and Technical Education

⁵ Oxnard College, Career and Technical Education

Drug and Alcohol Counseling ⁶			
CAADE Drug / Alcohol Counseling Certificate	2011-2012	2012-2013	2013-2014
Oxnard College	72%	81%	85%

First Responders/Fire Academy			
EMT Basic Exam Pass Rates	2011-2012	2012-2013	2013-2014
Moorpark College ⁷	68%	75%	Not offered
Oxnard College 1 st pass ⁷ (cum rate 6 attempts)	62% (68%)	59%	59% (77%)
Ventura College ⁷	89%	87%	74%
Paramedic Exam (Written and Practical) ⁸			
Ventura College	100%	100%	100%
Firefighter #1 Program ⁹			
Oxnard College	98.5%	100% (F2013)	100%

Health Science Programs			
Certified Nurse Assistant ¹⁰	2011-2012	2012-2013	2013-2014
Ventura College (Written Test and Skill Test)	100% and 92%	100% and 94%	100% and 85%
Registered Nurse: NCLEX ¹¹			
Moorpark College	100%	96%	88%
Ventura College	96%	95%	98%
Radiologic Technology ¹²			
Moorpark College	100%	100%	100%

⁶ Oxnard College, Career and Technical Education

⁷ National Registry EMT Pass Rates (1st pass)

http://www.emsa.ca.gov/Media/Default/PDF/EMT_Pass%20Rates2013.pdf; <http://www.emsa.ca.gov/EMT>

⁸ Ventura College Director, School of Pre-Hospital and Emergency Medicine

⁹ Oxnard College, Career and Technical Education

¹⁰ Ventura College Website, Licensure Passage Rates

http://www.venturacollege.edu/departments/academic/nursing_science/licensure_rates.shtml

¹¹ Department of Consumer Affairs, Board of Registered Nursing, <http://www.rn.ca.gov/schools/passrates.shtml>

¹² The California Department of Public Health <http://www.cdph.ca.gov/certlic/radquip/Documents/X-raySchoolPassRates.pdf>

Productivity Rates

Productivity is measured by dividing Weekly Student Contact Hours by faculty workload (FTEF).

	FTEF	WSCH	Productivity
Moorpark College			
Fall 2012	276.82	160,684.77	580.46
Fall 2013	281.62	157,762.52	560.19
Fall 2014	286.64	156,344.67	545.43
Spring 2012			
Spring 2012	288.80	149,233.41	516.74
Spring 2013	263.10	149,260.07	567.31
Spring 2014	280.96	149,956.08	533.73
Oxnard College			
Fall 2012	117.22	63,633.94	542.88
Fall 2013	121.91	68,708.32	563.60
Fall 2014	132.75	70,959.42	534.55
Spring 2012			
Spring 2012	122.72	65,096.19	530.46
Spring 2013	121.59	67,219.61	552.85
Spring 2014	125.40	67,287.43	536.59
Ventura College			
Fall 2012	260.18	135,547.20	520.97
Fall 2013	262.95	138,548.05	526.89
Fall 2014	263.71	134,093.64	508.48
Spring 2012			
Spring 2012	259.70	128,528.40	494.91
Spring 2013	259.92	137,296.53	528.23
Spring 2014	268.30	133,114.20	496.14

NOTE: FTEF includes additional FTEF for extra-large classes. Figures include all enrollment activity including non-resident enrollment. Fall 2014 and Spring 2014 run as of May 2015.

Student Learning Outcomes / Student Service Unit Outcomes

	Moorpark	Oxnard	Ventura
Course Level Outcomes			
Total number of college courses	487	560	1,087
Number of college courses with ongoing assessment of learning outcomes	487	540	1,047
Percentage of total	100%	96%	96%
Program Level Outcomes			
Total number of college programs	69	68	30
Number of college programs with ongoing assessment of learning outcomes	69	63	24
Percentage of total	100%	93%	80%
Service Unit Outcomes			
Total number of student and learning support activities	19	12	25
Number of student and learning support activities with ongoing assessment of learning outcomes:	19	12	21
% of student learning support activities with on-going assessment	100%	100%	84%
General Education			
Number of courses identified as part of the GE program	308	251	394
Percent of GE courses with ongoing assessment of GE learning outcomes	100%	100%	95%
Do GE outcomes include all areas identified in the Accreditation Standards?	Yes	Yes	Yes
Number of GE courses with Student Learning Outcomes mapped to GE program Student Learning Outcomes:	308	251	370
Institutional Level Outcomes			
Number of Institutional Student Learning Outcomes defined	4	6	5
Percentage of college instructional programs and student and learning support activities which have Institutional Student Learning Outcomes mapped to those programs and activities	100%	100%	95%
Percent of institutional outcomes with ongoing assessment of learning outcomes	100%	100%	100%

Data Source: As reported on the 2015 Annual ACCJC Reports

Appendix A: Data Definitions

Three-Year Unduplicated Degree, Certificate, Transfer Outcomes

Outcomes are mutually exclusive and are assessed in the order reported. For example, a student receiving a degree during the 3 year time frame and then transferring will only be counted as an award recipient. A student counted as a two year transfer has not received any award, has not transferred to a four year school, is not transfer ready and was not enrolled in the district or given college for Spring 2014.

Fall Cohorts:

All students with an Enrollment Status Code = 1 and ending the term with at least one class resulting in a transcript notation, excluding students who are taking ESL classes only.

Degrees and Certificates:

Student was awarded either an associate degree or certificate, other than the CSUGE or IGETC certification, between Fall 2011 and Summer 2014.

Transfer Certification:

Student was awarded either a CSUGE or IGETC certification between Fall 2011 and Summer 2014.

Four Year Transfer:

Student was identified as transferring to a four year college or university after Fall 2011 and before September 30, 2014. Students were matched to the National Student Clearinghouse.

Transfer Ready:

Student successfully completed transfer level MATH and ENGL classes and successfully completed 60 or more units prior to Summer 2014 and the last VCCCD cumulative GPA was 2.0 or better.

Two Year Transfer:

Student was identified as transferring to a two year college after Fall 2011 and before September 30, 2014. Students were matched to the National Student Clearinghouse.

Still Enrolled:

Student was enrolled (received at least one transcript notation) during the Spring 2014 or Summer 2014 term.

Not Enrolled / Unknown Progress:

Student did not graduate, become transfer ready, or enroll in Spring/Summer 2014 and was unable to be matched as a transfer student.

Appendix B: Source Information Three-Year Unduplicated Degree, Certificate, Transfer Outcomes

(Defined for Fall 2011 Cohort)

DEFINITION	SOURCE	CRITERIA
* Fall Cohort - All students with an Enrollment Status Code = 1 and ending the term with at least one class resulting in a transcript notation, excluding students who are taking ESL classes only.	ACADEMIC HISTORY	Term Code = 201107
		Grouped on ID, Minof Subject_Code <>"ESL" and MaxOf Subject_Code <>"ESL"
* Degrees and Certificates - Student was awarded either an associate degree or certificate, other than the CSUGE or IGETC certification, between Fall 2011 and Summer 2014.	DEGREES and CERTIFICATES	PROGRAM_CD is not "*CSU*" and not "*IGETC*"
		Degree_Certif_Status = "UA" and Graduation Date >= 12/01/2011 and <=09/01/2014
* Transfer Certificate - Student was awarded either a CSUGE or IGETC certification between Fall 2011 and Summer 2014.	DEGREES and CERTIFICATES	PROGRAM_CD is like "*CSU*" or like "*IGETC*"
		Degree_Certif_Status = "UA" and Graduation Date >= 12/01/2011 and <=09/01/2014
* Four Year Transfer - Student was identified as transferring to a four year college or university after Fall 2011 and before September 30, 2014. Students were matched to the National Student Clearinghouse.	National Student Clearinghouse	Cohort submitted to NSC matched by name and birthdate for subsequent enrollment after cohort term - End date >=12/30/2011
	updated TRANSFER MASTER.accdb	College Type = "4" and First Enrollment Date >=20111230 and <=20140930
* Transfer Ready - Student successfully completed transfer level MATH and ENGL classes and successfully completed 60 or more units prior to Summer 2013 and the last VCCCD cumulative GPA was 2.0 or better.	ACADEMIC HISTORY and COURSE CATALOG	Term Code <= 201403 and Subject Code = "ENGL" and Success_ind = "Y" and Transfer_inst_code = "UC/CSU" Or "CSU"
		Term Code <= 201403 and Subject Code = "MATH" and Success_ind = "Y" and Transfer_inst_code = "UC/CSU" Or "CSU"
		Sum of Student Units where Term Code <= 201403 and Success_ind = "Y" and Transfer_inst_code = "UC/CSU" Or "CSU"
		GPA_CUM_DEGAPP for Last Term prior to 201305
* Two Year Transfer - Student was identified as transferring to a two year college after Fall 2010 and before September 30, 2014. Students were matched to the National Student Clearinghouse.	National Student Clearinghouse	Cohort submitted to NSC matched by name and birthdate for subsequent enrollment after cohort term - End date >=12/30/2011.
	updated TRANSFER MASTER.accdb	College Type = "2" and First Enrollment Date >=20111230 and <=20140930
* Still Enrolled - Student was enrolled (received at least one transcript notation) during the Spring 2014 or Summer 2014 term.	ACADEMIC HISTORY	Term Code = 201403 or 201405