

# Transfer to Complete your Bachelor's Degree

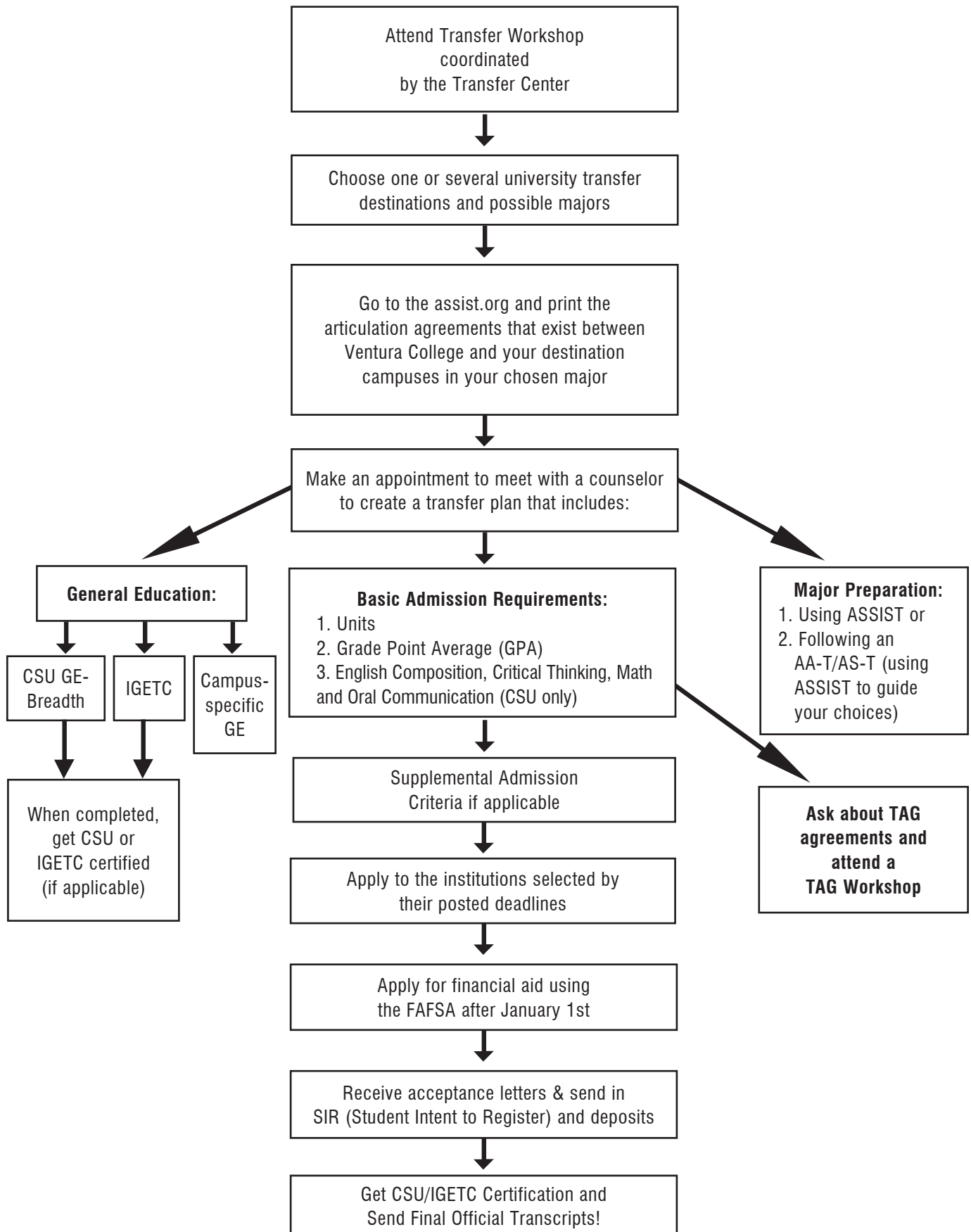
## WHAT IS A BACHELOR'S DEGREE?

A Bachelor's degree, sometimes called a baccalaureate degree, generally requires 4-5 years of study at a university. A Bachelor's degree requires completion of both lower and upper division courses.

Community colleges offer lower division courses, providing students the opportunity to complete general education and lower division major or pre-major coursework prior to transferring to a university. Once a student transfers, they will complete mainly upper division coursework in their major at the university. The Bachelor of Arts (BA) and Bachelor of Science (BS) are the common baccalaureate degrees. BA degrees are most often awarded in the arts, humanities, and social sciences. The BS is more likely to be awarded in the sciences, math, engineering and for professional or technical fields of study. However, there are no absolute universal differences between these degrees and policies their award vary from college to college.

- 1) **Explore your major** options at websites such as [assist.org](http://assist.org), [collegeboard.org](http://collegeboard.org), [mymajors.com](http://mymajors.com), [collgeview.com](http://collgeview.com) and look at related career prospects at sites like [www.bls.gov/oco](http://www.bls.gov/oco) and [labormarketinfo.edd.ca.gov](http://labormarketinfo.edd.ca.gov)
- 2) **Explore Transfer Opportunities:**
  - \* California State University (CSU): 23 campuses see [csumentor.edu](http://csumentor.edu) and page 66 in this catalog
  - \* University of California (UC): 9 campuses see [universityofcalifornia.edu](http://universityofcalifornia.edu) and page 71 in this catalog.
  - \* Independent/Private Colleges and Universities: see [californiacolleges.edu](http://californiacolleges.edu), and college websites.
  - \* Out-of-State Colleges and Universities: see [collegeboard.org](http://collegeboard.org), [Petersons.com](http://Petersons.com) , and college websites.
- 3) **Schedule an appointment** with a counselor in the Transfer Center to develop a Transfer plan.
- 4) **Talk to a university representative** either in the Transfer Center, at the university campus, or by phone or email to refine your educational plan and/or get up to date information regarding your major, housing, and campus support services.
- 5) **Schedule a visit** and campus tour by calling the university's admission or outreach/recruitment office or sign-up for a scheduled field trip for fall or spring semester through the Transfer Center.
- 6) **Stay on-track:** Continue to follow your transfer plan, meeting with your counselor each semester to make adjustments as necessary. Updated major requirements can be found at [assist.org](http://assist.org) for the UC and CSU.
- 7) **Apply to the institutions** you selected by their posted deadlines. The UC system accepts fall applications from Nov. 1st – Nov. 30th only. The CSU system accepts fall applications from Oct. 1st through Nov. 30th. Independent and out-of-state colleges have their own deadlines. Check with their admission offices and on their websites.
- 8) **Apply for financial aid** online at [fafsa.ed.gov](http://fafsa.ed.gov) or Dream Act online at [dream.csac.ca.gov](http://dream.csac.ca.gov) after January 1st and prior to March 2nd to be eligible for the Cal Grant and begin searching for outside scholarship opportunities online (examples: [hsf.net](http://hsf.net), [vccf.org](http://vccf.org), [fastweb.com](http://fastweb.com)) and through community organizations
- 9) **Receive your acceptance letters** (and from some colleges you will also receive your financial aid award offers shortly after). Choose the campus that best suits your needs and commit to that campus by signing a letter of intent and paying any necessary deposits. Notify the other campuses that you will not be attending so that they may make room for other students. Student Intent to Register - SIR - deadline is typically May 1st.
- 10) **Get Certified:** Make an appointment in the Counseling Office to have your IGETC or CSU-GE certified and apply for your Certificate of Achievement in IGETC or CSU-GE.
- 11) **Don't Forget to Send Final Official Transcripts** after you have completed all coursework to the university. The importance of this cannot be stressed enough. You may have your admission revoked if you do not provide complete official transcripts by the university deadline.

# STEPS TO TRANSFER





# ASSIST.ORG

## The Key to Transferring to the UC and CSU

### What is ASSIST?

ASSIST is a computerized student-transfer information system that can be accessed over the World Wide Web at [www.assist.org](http://www.assist.org). It displays reports of how course credits earned at one California college or university can be applied when transferred to another. ASSIST is the official repository of articulation for California's colleges and universities and therefore provides the most accurate and up-to-date information available about student transfer in California.

### The ASSIST acronym stands for Articulation System Stimulating Interinstitutional Student Transfer

**1. Go to [www.assist.org](http://www.assist.org).** From the homepage, first select the CSU or UC campus you are planning to transfer to from the drop-down menu and the year of the agreement (pick the most current academic year available)

*Selected institution and academic year:*

California State University, Northridge

15 -16

**2. Next, select the community college where you are taking or have taken courses in your major**

*Agreements with Other Campuses:*

From: Ventura College

3. You will be given a choice of selecting an articulation agreement by major or by department. You always want to choose the option "By Major." Once you have selected a major from the drop-down menu, the most current articulation agreement that exists between the two institutions you have selected will appear. This agreement will list all lower-division major preparation courses required by the university and the courses at your community college that will be accepted in fulfillment of these requirements. Available substitutions and additional admission information that applies specifically to that major may also be listed here. For some university courses there will be no articulated courses.

4. If your course doesn't fulfill a requirement in your major, it may still satisfy General Education or at least count as elective units towards admission and graduation requirements. This information may be found on the lists appearing at the bottom of the page.

#### ***Ventura College Courses Applicable for Transfer***

- C-ID Designators
- CSU GE-Breadth Certification Courses
- CSU Transferable Courses
- CSU US History, Constitution, and American Ideals Courses
- IGETC for UC and CSU
- UC Transferable Courses
- UC Transfer Admission Eligibility Courses



# Associate Degree for Transfer

## *A Degree with a Guarantee.*<sup>SM</sup>

An Associate Degree for Transfer (ADT) is an Associate in Arts for Transfer (AA-T) or Associate in Science for Transfer (AS-T) degree that is designed specifically for transfer to the California State University System. The associate degree for transfer is the result of Senate Bill 1440, a transfer bill that required the California Community Colleges to offer associate degrees for transfer in many of the most popular majors, and for the CSU to provide priority admission to California Community College students who have earned an AA-T or AS-T degree. These degrees can be completed in 60 CSU transferable semester units (or 90 quarter units) and include coursework in general education, major preparation and electives (if needed).

Students who have completed an AA-T or AS-T and are admitted to a CSU major that has been deemed similar are guaranteed admission at junior standing, and the opportunity to complete a baccalaureate degree with 60 additional semester (or 90 quarter) units. AA-T and AS-T degrees are recognized by both the California Community College and CSU systems as a measure of preparation and readiness for transfer to upper-division course work at the CSU.

Below is the list of Ventura College Associate Degrees for Transfer (ADT) and to find out which CSU campuses accept each degree, go to **[www.adegreewithaguarantee.com](http://www.adegreewithaguarantee.com)**. Students are encouraged to meet with a counselor to review their options for transfer and to develop an educational plan that best meets their goals and needs.

At the time of catalog publication, a student may earn an AA-T or AS-T at Ventura College in the following majors:

- Administration of Justice (Criminal Justice) AS-T
- Anthropology AA-T
- Art History AA-T
- Business Administration AS-T
- Communication Studies AA-T
- Early Childhood Education (Child Development) AS-T
- English AA-T
- Geography AA-T
- History AA-T
- Kinesiology AA-T
- Mathematics AS-T
- Political Science AA-T
- Psychology AA-T
- Sociology AA-T
- Studio Arts AA-T
- Theatre Arts AA-T

*For more information on "a degree with a guarantee", go to [www.adegreewithaguarantee.com](http://www.adegreewithaguarantee.com) or [sb1440.org](http://sb1440.org).*

*Reference: AP 4100 - Last reviewed and approved by the Board in November, 2014.*

# Course Identification Numbering System (C-ID)

The Course Identification Numbering System (C-ID) is a statewide numbering system independent from the course numbers assigned by local California community colleges. A C-ID number next to a course signals that participating California colleges and universities have determined that courses offered by California community colleges are comparable in content and scope to courses offered on their own campuses, regardless of their unique titles or local course number. Thus, if a schedule of classes or catalog lists a course bearing a C-ID number, for example CJ V01, students at Ventura College can be assured that it will be accepted in lieu of a course bearing the C-ID AJ 110 designation at another community college. In other words, the C-ID designation can be used to identify comparable courses at different community colleges. However, students should always go to [www.assist.org](http://www.assist.org) to confirm how each college's course will be accepted at a particular four-year college or university for transfer credit.

The C-ID numbering system is useful for students attending more than one community college and is applied to many of the transferable courses students need as preparation for transfer. Because these course requirements may change and because courses may be modified and qualified for or deleted from the C-ID database, students should always check with a counselor to determine how C-ID designated courses fit into their educational plans for transfer.

Below is the list of Ventura College courses that have been approved by the C-ID program and given a C-ID designation.

<u>C-ID Designation</u>	<u>VC Course</u>	<u>C-ID Designation</u>	<u>VC Course</u>	<u>C-ID Designation</u>	<u>VC Course</u>
ACCT 120	BUS V01B	ECE 120	CD V62	MUS 120	MUS V02A
AJ 110	CJ V01	ECE 130	CD V63	MUS 125	MUS V02AL
AJ 120	CJ V02	ECE 200	CD V64A	MUS 130	MUS V02B
AJ 122	CJ V05	ECE 210	CD V64B	MUS 135	MUS V02BL
AJ 124	CJ V04	ECE 220	CD V24	MUS 140	MUS V02C
AJ 140	CJ V08	ECE 230	CD V05	MUS 145	MUS V02CL
AJ 150	CJ V35/ANTH V35	ENGL 100	ENGL V01A	PHIL 100	PHIL V01
AJ 200	CJ V25	ENGL 110	ENGL V01C	PHIL 120	PHIL V02
AJ 220	CJ V14	ENGL 130	ENGL V22A	PHIL 130	PHIL V06A
ANTH 110	ANTV V01	ENGL 135	ENGL V22B	PHIL 140	PHIL V06B
ANTH 120	ANTH V02	ENGL 140	ENGL V30	POLS 110	POLS V01
ARTH 110	ART V02A	ENGL 145	ENGL V31	POLS 120	POLS V04
ARTS 101	ART V19	ENGL 160	ENGL V21A	POLS 130	POLS V02
ARTS 200	ART V13A	ENGL 165	ENGL V21B	POLS 140	POLS V05
ARTS 205	ART V12B	ENGL 200	ENGL V10	PSY 110	PSY V01
ARTS 270	ART V11B	GEOG 110	GEOG V01	PSY 115	PSY V02
BIOL 140	BIOL V03	GEOG 111	GEOG V01L	PSY 120	PSY V15
BUS 110	BUS V30	GEOG 120	GEOG V02	PSY 130	PSY V25
BUS 115	BUS V45	GEOG 125	GEOG V08	PSY 150	PSY V03
BUS 120	BUS V53	GEOG 130	GEOG V05	PSY 170	PSY V31
BUS 140	CS V04	GEOG 140	GEOG V06	PSY 180	PSY V05
CDEV 100	CD V02	GEOG 150	GEOG V22	PSY 200	PSY V07
CDEV 110	CD V61	GEOG 155	GEOG V26	SOCI 110	SOC V01
CHEM 110	CHEM V01A & CHEM V01AL	GEOG 160	GEOG V16	SOCI 115	SOC V02
CHEM 120S	CHEM V01A & CHEM V01AL & CHEM V01B & CHEM V01BL	GEOL 110	GEOL V03	SOCI 125	PSY V04
CHEM 150	CHEM V12A & CHEM V12AL	HIST 130	HIST V07A	SOCI 140	SOC V04
CHEM 160S	CHEM V12A & CHEM V12AL & CHEM V12B & CHEM V12BL	HIST 140	HIST V07B	SOCI 150	SOC V03
COMM 110	COMM V01	HIST 150	HIST V18A	SPAN 100	SPAN V01
COMM 120	COMM V10	HIST 160	HIST V18B	SPAN 110	SPAN V02
COMM 130	COMM V15	HIST 170	HIST V01A	THTR 111	THA V01
COMM 140	COMM V03	ITIS 120	BUS V17	THTR 151	THA V02A
COMM 150	COMM V12	JOUR 100	COMM V16	THTR 152	THA V02B
COMM 160B	COMM V13	KIN 100	KIN V81	THTR 171	THA V05A
COMM 170	COMM V05	KIN 101	KIN V80	THTR 175	THA V06A
COMP 152	CS V17/MATH V52	MATH 160	MATH V52		
		MUS 100	MUS V08		
		MUS 110	MUS V01		

**Note:** Courses are approved periodically. Students should consult <http://c-id.net> for the most current information.

# Transfer to the California State University (CSU)

The California State University (CSU) is now the largest university system in the country with the most diverse college student population. The CSU offers more than 1,800 bachelor's and master's degree programs in over 375 subject areas, as well as teaching credential programs across its 23 campuses. The CSU provides the majority of the skilled professional workers that are critical to the state's knowledge-based industries such as agriculture, engineering, business, technology, media, and computer science. In addition, the CSU is the state's leading provider of graduates in services that are critical to the state, providing more than 80 percent of the college degrees in criminal justice, education, social work and public administration. Over 460,000 students are enrolled at the CSU each year with more than half of CSU Bachelor's degrees awarded to students who transferred to the CSU from community college. With proper program planning, students can complete lower division preparation at Ventura College and transfer to the campus of their choice without loss of units. Information on the major transfer fields for which students may prepare at Ventura College is available in the Counseling Office or Center Transfer Center and on [assist.org](http://assist.org). Additional CSU information is also available at [calstate.edu](http://calstate.edu) and [csumentor.edu](http://csumentor.edu).

## California State University System

Abbreviations for these campus names, used elsewhere in the Catalog, follow each campus name in parentheses:

- Cal Poly Pomona (POM)
- Cal Poly San Luis Obispo (SLO)
- California Maritime Academy (MA)
- CSU Bakersfield (BAK)
- CSU Channel Islands (CI)
- CSU Chico (CH)
- CSU Dominguez Hills (DH)
- CSU East Bay (EB)
- CSU Fresno (FRE)
- CSU Fullerton (FUL)
- CSU Long Beach (LB)
- CSU Los Angeles (LA)
- CSU Monterey Bay (MB)
- CSU Northridge (NOR)
- CSU Sacramento (SAC)
- CSU San Bernardino (SB)
- CSU San Marcos (SM)
- CSU Stanislaus (STA)
- Humboldt State (HUM)
- San Diego State (SD)
- San Francisco State (SF)
- San Jose State (SJ)
- Sonoma State (SON)





## CSU Minimum Transfer Admission Requirements

All the campuses of the California State University welcome applications from transfer students. If you complete college units after the summer following graduation from high school, you are considered a transfer student. The number of units you have completed at the time you enter a CSU determines the admission standards that will apply to your application. It is important to identify which admission requirements apply to you.

A Ventura College student who is planning to transfer to one of the campuses of the California State University (except the Maritime Academy) can satisfy the minimum admission criteria by meeting the following requirements:

### 1. TRANSFERRING WITH AN ASSOCIATE DEGREE FOR TRANSFER (ADT)

Students who receive a newly designed California Community College associate degree for transfer (SB 1440/STAR Act) are eligible for admission with junior standing into the California State University (CSU) system. A California Community College student who has the Associates in Arts degree for Transfer (AA-T) or the Associate in Science degree for Transfer (AS-T) will be given priority admission consideration to the local CSU into a similar baccalaureate (BA) degree program with a guarantee of junior standing as long as the student meets all prescribed admission requirements. Once admitted, the student will only be required to complete 60 additional prescribed units to qualify for the similar baccalaureate degree.

To obtain an AA-T/AS-T degree, students must:

- Complete 60 semester units or 90 quarter units that are eligible for transfer to the California State University, including both of the following:
  - (A) Certified completion of the California State University General Education-Breadth (CSU GE Breadth) pattern or the Intersegmental General Education Transfer Curriculum (IGETC) for CSU pattern
  - (B) Completion of a minimum of 18 semester units in an "AA-T" or "AS-T" major as detailed in the **Course and Program Descriptions**. All courses in the major must be completed with a grade of C or better or a "P" if the course is taken on a "pass-no-pass" basis (Title 5 §55063). Even though a "pass-no-pass" is allowed, it is recommended that students complete their major courses with a letter grade.
- Earn a minimum grade point average (GPA) of at least 2.0 in all CSU-transferable coursework.
- Complete requirements in **Residency**. For students in the Ventura County Community College District (VCCCD), a minimum of 12 units must be completed in residency at the college granting the degree.

For up-to-date information on the transfer associate degree, visit <http://www.adgreewithaguarantee.com/> or visit the Counseling Department.

**Note:** SB 1440 does not guarantee a student admission for a specified major or campus, but requires the California State University to grant a student priority admission consideration to the local CSU campus and to a program or major that is similar to the transfer AA degree as determined by the California State University. With this degree, students may be given a GPA bump when applying to an impacted campus outside their local area or an impacted major that is deemed similar.

### 2. UPPER DIVISION TRANSFERS:

To be considered as an upper division transfer, you must have completed a minimum of 60 semester or 90 quarter units of transferable coursework. Your overall grade point average must be at least 2.0 (2.40 for non-California residents). The GPA is calculated using all transferable coursework attempted. In case of campuses or programs with high demands, a GPA of 2.00 may not be sufficient to be admitted.

Within the transferable courses, there must be 30 semester units or 45 quarter units of general education coursework which includes oral communication (Area A1 of the CSU GE-Breadth), written communication (Area A2 of the CSU GE-Breadth), critical thinking (Area A3 of the CSU GE-Breadth) and mathematics (Area B4 of the CSU GE-Breadth). These four sections of general education must be completed with a grade of C or better for each course. In addition, students must be in good standing at the last college or university attended (i.e. eligible to re-enroll at that college or university).

### 3. LOWER DIVISION TRANSFERS:

If, at the time you will enter the CSU, you have completed 59 or fewer semester or 89 or fewer quarter units you are a lower-division transfer.

Please be aware that most CSU campuses do not admit lower-division transfer students. Be sure to check with the specific CSU campus if you are considering transferring as a lower-division student.

The best way to apply to the CSU is to go online to the CSUMentor website at [www.csumentor.edu](http://www.csumentor.edu). In addition to the online application, CSUMentor has preadmission, financial aid, and admission information as well as campus-specific supplemental information.



# Preparing to Transfer to the California State University

Students planning to transfer to one of the California State Universities must keep the following requirements in mind when selecting courses:

## **1. COMPLETION AND CERTIFICATION OF GENERAL EDUCATION**

**(GE) IS STRONGLY RECOMMENDED:** The CSU requires completion of 48 units of general education for graduation of which up to 39 units can be transferred and certified by a California Community College. It is strongly recommended that students complete the 39 units of GE-Breadth courses as part of their minimum 60 units requirement for transfer as an upper division student. Certification waives additional lower division general education requirements that otherwise each CSU campus requires. It is important that students request certification prior to transfer. Certification is not automatic. Students can complete their GE by either of the following:

A. Complete CSU GE-Breadth (pg. 70)

B. Complete IGETC (pg. 78)

**2. AMERICAN INSTITUTIONS REQUIREMENT:** while not a part of GE, it is a graduation requirement at the CSU. The colleges of the VCCCD allow courses used to fulfill the American Institutions requirement to also satisfy requirements in area D of the CSU GE-Breadth or Area 4 of IGETC.

**3. PREREQUISITE COURSES FOR THE MAJOR:** Some lower division courses in the student's major must be taken prior to transfer in order for the student to be admitted into a particular major. Some majors may also require concentration courses or additional support courses. For a complete list of major and supporting requirements at your CSU destination campus and their comparable courses at Ventura College, go to [www.assist.org](http://www.assist.org).

**4. SUPPLEMENTARY ADMISSION CRITERIA/IMPACTED MAJORS:** In the CSU, an undergraduate major or campus is designated as impacted when it receives more eligible applicants than either the campus or the major can accommodate. In such instances, the CSU campuses have been authorized to use supplemental admission criteria to screen applicants to these majors and/or campuses. Students interested in an impacted major or campus must apply for admission during the initial admission application filing period (Oct. 1 - Nov. 30 for fall admission) and should strive to make themselves as competitive as possible, both in course preparation and GPA. Assist.org will provide information about required coursework in impacted majors. For the most up-to-date information on campus impactation and impacted programs, please go to [www.calstate.edu/SAS/impaction-campus-info.shtml](http://www.calstate.edu/SAS/impaction-campus-info.shtml)

**5. TRANSFERABILITY OF COURSES:** Only courses considered as appropriate for baccalaureate credit are transferable. In the VCCCD, these courses are indicated in their course descriptions by the notation "Transfer credit: CSU."

**IMPORTANT NOTE:** Final official transcripts from all colleges and universities attended and/or external credit documentation must be submitted prior to CSU enrollment to verify that the student is eligible for admission. CSU campuses may rescind admission, delay admission, or not permit registration or attendance until receipt of final transcripts and/or external credit documentation.

*Reference: The CSU Admissions Handbook 2015-2016; [www.calstate.edu/SAS/impactioninfo.shtml](http://www.calstate.edu/SAS/impactioninfo.shtml)*

**NOTE:** These admission requirements are subject to change. Students should consult a counselor and/or the [csumentor.edu](http://csumentor.edu) website for most up-to-date transfer requirements.





# California State University

## General Education-Breadth (CSU GE) Pattern 2015-2016

### Area A: English Language Communication and Critical Thinking

Complete one course from each group (A1, A2, A3). A total of 9 semester units (12 qtr. units) are required. All courses in Area A must be completed with a grade of "C" or better.

**A1: Oral Communication:** COMM V01, V03, V10, V15.

**A2: Written Communication:** ENGL V01A.

**A3: Critical Thinking:** COMM V10; ENGL V01B; PHIL V04, V05.

**Area B: Scientific Inquiry and Quantitative Reasoning:** Complete a minimum of 9 semester units (12 qtr. units) with at least one course from each group (B1, B2, B3, B4) to include one laboratory activity course corresponding to selected lecture course. Math requires a grade of "C" or better.

**B1: Physical Science:** AST V01; CHEM V01A, V01B, V05, V12A, V12B, V20, V21, V30; ESRM V02; GEOG V01, V05; GEOL V02, V03, V07, V11, V21; PHSC V01; PHYS V01, V02A, V02B, V03A, V03B, V04, V05, V06.

**B2: Life Science:** ANAT V01; AHPH V01; ANTH V01; BIOL V01, V03, V04, V10, V12, V14, V18, V23, V29; BIOT V18; ESRM V01; MICR V01; PHSO V01; PSY V03.

**B3: Laboratory Activity:** ANAT V01; ANPH V01; ANTH V01L; AST V01L; BIOL V01L, V03, V04, V14, V23, V29L; CHEM V01AL, V01BL, V05, V12AL, V12BL, V20L, V21L, V30L; GEOG V01L; GEOL V02L, V03L; MICR V01; PHSC V01; PHSO V01; PHYS V01, V02AL, V02BL, V03AL, V03BL, V04L, V05L, V06L.

**B4: Math:** CS V17; MATH V04, V05, V20, V21A, V21B, V21C, V22, V23, V38, V40, V44, V46, V52; PSY V04.

**Area C: Arts and Humanities:** Choose 9 units (12 qtr. units) with at least one course from area C1, one course from C2, and the third course from either C1 or C2.

**C1: Arts** (Art, Cinema, Dance, Music, Theater): AES V10, V12, V65, V66, V67; ART V01, V02A, V02B, V02C, V03, V04, V05, V06, V07, V08, V09, V12A, V13A, V19, V51A; DANC V01, V02; ENGL V29A, V29B; MUS V01, V03, V06, V07, V08, V09A, V09B; PHOT V01, V07; THA V01, V02A, V20, V29.

**C2: Humanities** (Literature, Philosophy, Languages other than English): AES V31, V61, V63; ENGL V01B, V10, V11A, V15, V16, V21A, V21B, V22A, V22B, V23, V26, V30, V31, V33, V34, V35, V36A, V36B; FREN V01, V02, V03, V04; GERM V01, V02, V03, V04; HIST V01A, V01B, V15, V17, V18A, V18B; IDS V08; ITAL V01, V02, V03, V04; JAPN V01, V02; PHIL V01, V02, V03A, V03B, V06A, V06B, V09, V10; SL V10A, V10B, V10C; SPAN V01, V02, V03, V03S, V04, V04S, V20; THA V23.

**Area D: Social Sciences:** Choose 9 semester units (12 qtr. units) courses to be taken in more than one subarea

**D0: Sociology & Criminology:** AES V11, V24; CHST V24; CJ V03; PSY V31; SOC V01, V02, V03, V04, V05, V07, V13, V24, V31.

**D1: Anthropology & Archaeology:** AES V01; ANTH V02, V03, V04, V05, V06, V07.

**D2: Economics:** ECON V01A, V01B.

**D3: Ethnic Studies:** AES V01, V02A, V02B, V11, V20, V22, V23, V24, V40A, V40B, V41; ANTH V04; CHST V01, V02, V24; COMM V12; HIST V03A, V03B, V05A, V05B, V12, V13; PSY V30; SOC V03, V24.

**D4: Gender Studies:** ANTH V06; HIST V02A, V02B; PSY V25; SOC V04.

**D5: Geography:** GEOG V02, V06, V08.

**D6: History:** AES V02A, V02B, V21A, V21B, V22, V40A, V40B, V41, V42A, V42B, V61, V63; HIST V01A, V01B, V02A, V02B, V03A, V03B, V04A, V04B, V05A, V05B, V07A, V07B, V08, V10A, V10B, V12, V13, V14A, V14B, V15, V16, V17, V18A, V18B, V21.

**D7: Interdisciplinary, Social, or Behavioral Sciences:** BIOL V18; BIOT V18; CD V02, V03, V05, V61; COMM V12, V16.

**D8: Political Science, Government, Legal Institutions:** CJ V01, V02, V15; ESRM V03; POLS V01, V02, V03, V04, V05, V09, V10, V11, V12, V14, V15, V16.

**D9: Psychology:** PSY V01, V02, V05, V07, V15, V25, V29, V30, V31; SOC V31.

**Area E: Life Long Learning & Self-Development:** complete 3 semester units (4 qtr. units) with no more than 1 course of physical activity.

AES V11; ANTH V02; ART V01; BIOL V10, V12, V18; BIOT V18; CD V02, V03, V05; CJ V11A, V11B; COMM V03; COUN V01, V02; DANC V04, V10A, V10B, V10C, V10D, V13A-V15D, V23, V27, V29A-V30D, V50A, V50B, V50C, V50D; EAC V01, V21, V25-V28; ESRM V01; HED V70, V73, V76, V82, V87, V93, V95, V97; HIST V02A, V02B; ICA V02-V08, V13-V20, V22-V24, V30B, V31B, V36, V69; KIN V02-V04, V06, V10, V12, V14, V16, V18-V20, V22-V24, V26, V28, V32, V34, V40A, V40B, V42A, V42B, V44A, V44B, V46A, V46B, V48A, V48B, V50A, V50B, V52, V70A, V70B, V72, V73, V74A, V74B, V76A, V76B; PSY V01, V02, V05, V25; SOC V03, V05; THA V14.

**U.S. History, Constitution and American Ideals:** ONE course from Group A and ONE course from Group B

\* Courses may be double counted in Area D.

**Group A: U.S. History:** AES V02A, V02B, V22, V40A, V40B, V61, V63; HIST V02A, V02B, V03A, V03B, V04B, V05A, V05B, V07A, V07B, V12, V15\*, V17. (\*HIST V15 will no longer meet US History requirement effective Fall 2016)

**Group B: U.S. Government:** POL V01, V03.

**NOTE:** Certification is not automatic. Students must request certification after completion of the CSU GE-Breadth. Students completing CSU GE-Breadth Certification may also apply for a Certificate of Achievement in CSU GE-Breadth. See your counselor. HIST V15 will no longer meet CSU US History requirement effective Fall 2016

Courses on the CSU GE-Breadth are subject to change. Always check assist.org to verify the latest CSU GE approvals before taking a course to meet CSU GE-Breadth.

# California State University (CSU) 2015-2016

## General Education-Breadth Certification Information

It is recommended that students planning to transfer to a California State University (CSU) complete their lower division general education prior to transfer by following the CSU GE-Breadth plan. Counselors can help students select courses that fulfill lower-division major requirements as well as general education. After students complete the CSU GE-Breadth pattern, they must meet with a counselor in the Counseling Office or Transfer Center to request certification. Certification is not automatic. Without this "certification", students may have additional lower-division general education requirements to fulfill after transfer that vary from campus to campus in the CSU. Students who fully complete the CSU GE-Breadth for Ventura College will also be eligible to apply for a Certificate of Achievement in California State University General Education-Breadth (CSU GE-Breadth). CSU GE is not appropriate for every major/college within the CSU. Check on [www.assist.org](http://www.assist.org) or with your counselor or the Transfer Center for updated information.

**Certification** - After students complete the CSU GE-Breadth pattern, they must meet with a counselor in the Counseling Office to request certification. Without this "certification", students may have additional lower-division general education requirements to fulfill after transfer that vary from campus to campus in the CSU. Associate Degrees for Transfer (ADTs) require full certification.

Certification of the CSU General Education Breadth requirements may include courses completed at Ventura College and previously completed courses from other regional accredited institutions as well.

Courses completed at other CSU campuses or at California community colleges must be certified in accordance with their General Education Patterns. It is the student's responsibility to provide an official transcript(s) from external institutions.

Courses that have been completed at a regionally accredited institution other than a California community college or CSU will be included only under the following circumstances:

1. The student provides an official transcript, catalog description(s) and, if required, dated course outline(s);
2. The course is determined to be equivalent to a course in Ventura College's CSU General Education pattern through the pass-along process in accordance with California State University Executive Orders (EO), the Academic Senate of the California Community Colleges (ASCCC) Resolution on Reciprocity and VCCCD AP 4100.

**Partial Certification** – It is possible to complete separately any of the Areas or sections (A-E) at Ventura College and receive partial certification in any or several of these areas; if you are not fully certified, it will be necessary for you to complete the remaining areas (and perhaps other areas) after transferring as defined by the catalog of the transfer school.

**Course Restrictions** - No course may be counted in more than one area.

**Scholarship** – A grade of C or better is required for each course completed in the oral communication (A1), written communication (A2), critical thinking (A3), and mathematics or quantitative reasoning (B4) of the CSU GE-Breadth. A "pass" or "P" is allowed, if the college's catalog states that it is equivalent to a C or better. Although a "P" is permissible, it is highly recommended that students complete each of these four (4) courses with a letter grade (A, B or C).

**Major Courses** – Most campuses require a grade of C or better for each course required in preparation for a student's major; most do not allow a "P" (Pass) grade for major courses. Some CSU campuses allow applicants who submit full or partial certification to double count courses for general education and major requirements. Some majors are highly selective and require completion of some, or all, of the required major preparation coursework prior to transfer. Consult a counselor or [assist.org](http://assist.org) for more information.

**U.S. History, Constitution and American Ideals Requirements** –All campuses require students to complete college-level coursework in U.S. History, American Government and California Government, in addition to GE requirements for graduation. Courses approved to satisfy this requirement are specified in appropriate areas. CSU campuses may permit double counting of courses taken to meet this requirement and GE-Breadth if the student is partially or fully certified.

**External Credits or Credit by Examination** - Advanced Placement (AP), International Baccalaureate (IB), and College Level Examination Program (CLEP) exams will be included in the CSU certification of general education requirements in accordance with the CSU Chancellor's Office policy. Students wishing to use units awarded for AP, IB, or CLEP should check with a counselor or refer to the Credit by Examination section of this catalog.

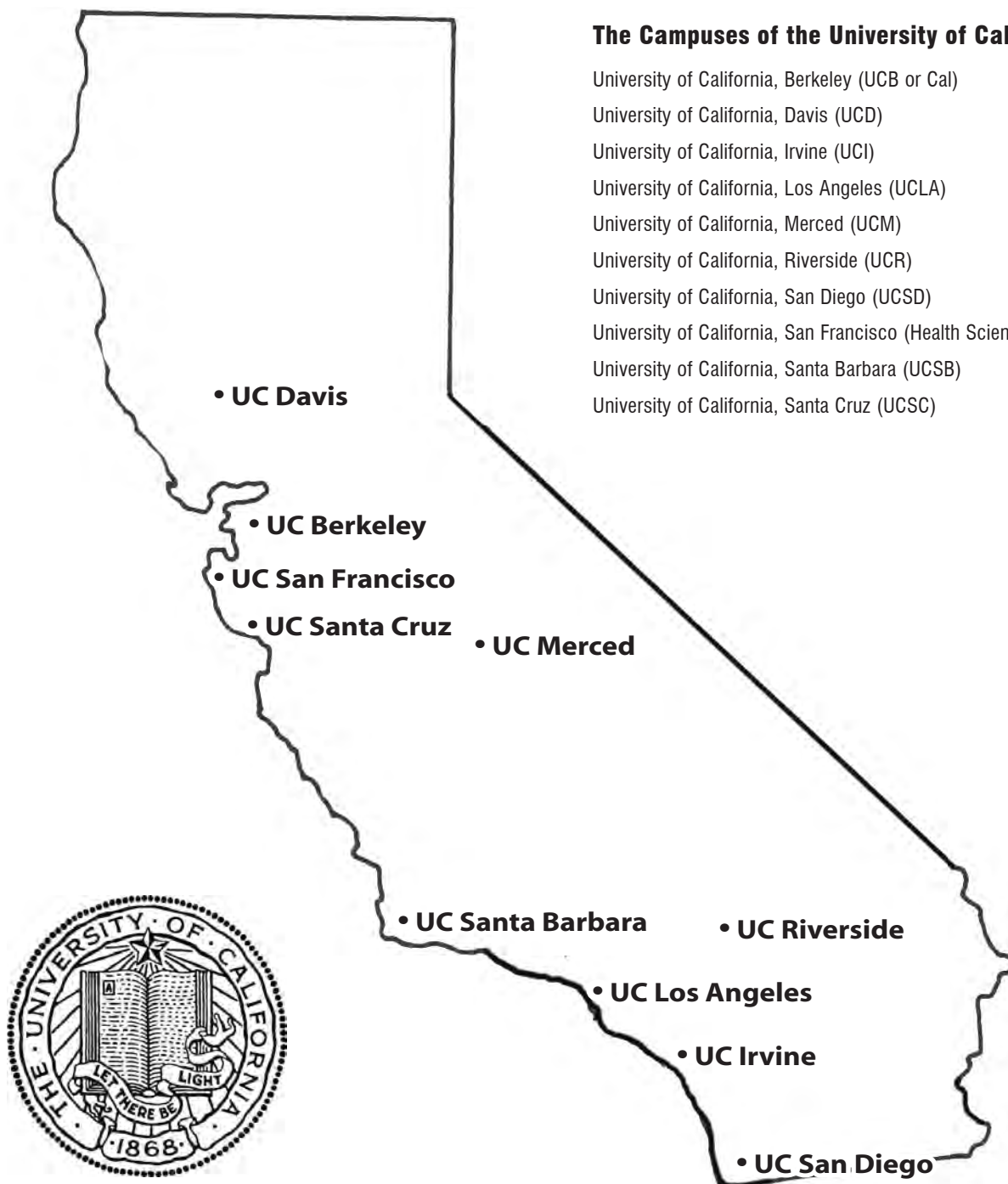
# Transfer to the University of California (UC)

## The University of California System

The University of California (UC) is one of the finest research universities in the world. It offers more than 750 majors and 150 disciplines, with more academic departments ranked in the top 10 nationally than at any other public or private university. The UC has established 10 campuses throughout the state of California and enrolls more than 233,000 students and employ more than 190,000 faculty and staff. All campuses have uniform entrance requirements and certain other features in common. However, each campus is distinctive and not all majors are offered on all campuses. Students should study the list of undergraduate colleges, schools, and majors available on each campus to determine which campuses will best satisfy their educational needs. Students are encouraged to discuss with their counselor the particular advantages each campus has to offer. For more information, see [universityofcalifornia.edu](http://universityofcalifornia.edu).

## The Campuses of the University of California

University of California, Berkeley (UCB or Cal)  
University of California, Davis (UCD)  
University of California, Irvine (UCI)  
University of California, Los Angeles (UCLA)  
University of California, Merced (UCM)  
University of California, Riverside (UCR)  
University of California, San Diego (UCSD)  
University of California, San Francisco (Health Sciences) (UCSF)  
University of California, Santa Barbara (UCSB)  
University of California, Santa Cruz (UCSC)



# UC Transfer Information

Approximately 30 percent of University of California (UC) undergraduates were transfer students. Students from California community colleges (CCC) students can become eligible for admission to the UC by meeting specific requirements. The requirements described below represent the minimum academic standards students must attain to be eligible for admission to the University. **Meeting the minimum requirements does not guarantee admission to the University nor does it guarantee admission to a particular campus or major of the student's.** Many campuses and majors receive more applications than they have spaces available. To be more competitive, students should work toward meeting the specific requirements for the campuses and majors they're interested in.

## **I. Admission Requirements as Junior-Level Transfer**

The UC give highest priority in transfer admission to California community college (CCC) students. A transfer student, according to the University, is a student who has enrolled in a regular (fall, winter, or spring) session at a college or university following high school. A student who meets this definition cannot disregard his or her college record and apply as a freshman. A student who attends a college summer program immediately after graduating from high school or who has completed college work while in high school is still considered a freshman applicant.

Studies have shown that community college students who enter UC as juniors perform just as well academically and their graduation rates are comparable to that of students who entered UC as freshmen.

The vast majority of CCC transfer students enter the UC at the junior level from California community colleges. To be eligible for admission as a junior transfer, a student must fulfill both of the following criteria:

1. Complete at least 60 semester (90 quarter) units of UC transferable college credit with a GPA of at least 2.4 (2.8 for nonresidents). Note: In order to ensure that all units are UC transferable, students should check the UC Transfer Course Agreement (UC TCA) in this catalog and on [assist.org](http://assist.org) to make sure their courses are approved for UC transfer.
2. Earn at least a 2.4 GPA in UC transferable courses (2.8 for non-California residents). Some majors require a higher GPA for admission selection. No more than 14 semester (21 quarter) units may be taken Pass/No Pass.
3. Complete either:
  - a. IGETC (see page 78)OR
  - b. The following 7 course pattern and earning a grade of C or better in each course:
    - Two UC transferable college courses (3 semester or 4-5 quarter units each) in English composition.
    - One UC transferable college course (3 semester or 4-5 quarter units) in mathematical concepts and quantitative reasoning;

- Four transferable college courses (3 semester or 4-5 quarter units each) chosen from at least two of the following subject areas:

- arts and humanities
- social and behavioral sciences
- physical and biological sciences

All campuses recommend that the student complete math and English as early as possible (some highly recommend completing them by the end of the fall term, one year prior to enrolling at UC).

Keep in mind that meeting these basic requirements does not guarantee admission to the campus or major of choice. To be as competitive as possible students should work toward meeting the requirements for the campuses they're interested in.

## **II. Transferring with an Associate Degree for Transfer (ADT)**

For students working toward an Associate Degree for Transfer (ADT), courses should be chosen that align with the requirements of the intended UC campus. Students should refer to the ASSIST website to guide them in selecting the right courses. Although earning an ADT does not guarantee admission to a UC, some campuses consider it in the comprehensive application review process.

## **III. Transfer from Four-Year or Out-of-State Two-Year Institutions or Intercampus Transfers**

The UC gives highest priority in transfer admission to California community college students. However, each year about 10 percent of all transfers enter UC from a four-year college or university. For admission requirements, visit <http://admission.universityofcalifornia.edu/transfer/requirements/other/index.html>.

## **IV. Lower-Division Transfer**

The University admits some transfer students before they reach junior standing if they have met specific requirements. Refer to the open/closed major status report at <http://www.universityofcalifornia.edu/admissions/how-to-apply/check-majors/index.html> to see which campuses will accept lower-division transfers for a particular term.

## **Preparation for Transfer**

To transfer to the University as a CCC Junior level transfer, a student must take the following steps:

**1. Meet Admission Requirements** – Students must complete the statewide eligibility requirements for transferring to the UC, see Admission Requirements as Junior-Level Transfer listed above.

**2. Major Preparation** – Major preparation requirements specify the courses students must take during the first two years of college to prepare for advanced study in the major. Major preparation is one of the central factors some UCs use to determine admission to the University. They may be required as part of the major, be prerequisites for other courses that are required as part of the major or be required to gain admission to the major and completing these courses before transfer makes a student a more competitive applicant and will help insure on-time graduation after transfer.

**Performance counts** – Transfer applicants are evaluated, in part, on the basis of their performance in major preparation coursework. It is important — very important — that students investigate the requirements for the intended major as soon as possible. If the major requires mathematics and/or science, it is essential that those prerequisites be completed before you transfer. Lack of preparatory coursework may affect admission to the major, particularly if there are many applicants vying for a limited number of spaces.

**Start early** – Students should begin coursework in the major as soon as one is selected. For fall admission, the campus may require the completion of certain major preparation requirements by the end of the preceding spring term.

**Ask for help** – Check out the transfer preparation paths to discover how best to prepare for UC's most popular majors. The Exploring Majors feature on [assist.org](http://assist.org) lists major-preparation requirements for all UC programs. The lists are updated throughout the year, so check ASSIST periodically to ensure you have the most current information.

### **3. Complete an appropriate set of general education course requirements and electives.**

Transfer students have two options for fulfilling General Education (GE) preparation for the UC, depending on the campus and major selected:

- Intersegmental Transfer General Education Transfer Curriculum (IGETC) is a series of courses that California community college students may complete to satisfy the lower-division breadth/general education requirements at both UC and the California State University (CSU). The IGETC is helpful for students who know they want to transfer but have not yet decided upon a particular institution, campus or major. Students who intend to transfer into high-unit majors, such as engineering and many of the physical and natural sciences, should concentrate on completing the many prerequisites for the major that the college screens for to determine eligibility for admission. See IGETC Considerations (pg.82)

OR

- Campus-specific general education requirements of the college or campus they plan to attend. (see [assist.org](http://assist.org))

### **Transfer Selection by Campus**

Many colleges, schools, or majors within the UC system are highly selective and may have additional program requirements. These could include but not limited to an audition, submission of a portfolio, supplemental applications, specific prerequisite coursework, test scores, and/or higher GPA than the minimum criteria for admission. Students are advised to make themselves as competitive as possible when applying for admission both in GPA and course preparation.

For more details about each campus's additional program requirements, visit <http://admission.universityofcalifornia.edu/counselors/requirements/index.html>

### **Transfer Admission Guarantee (TAG)**

Six UC campuses offer guaranteed admission to students from all California community colleges (CCC) who meet specific requirements. By participating in a Transfer Admission Guarantee (TAG) program, students can ensure their admission to a specific UC campus, some of which offer an early review of their academic records, early admission notification, and specific guidance on major preparation and general education coursework. For more information, visit <http://admission.universityofcalifornia.edu/counselors/files/tag-matrix.pdf> or/and your counselor in the Counseling Department or Career and Transfer Center.

#### **Who can file a TAG?**

Only students transferring directly from a CCC are considered for a TAG, including international students (those with a visa). A California community college transfer is one who has completed at least 30 semester (45 quarter) UC-transferable units at one or more CCC, and the last college the student attended in a regular session (fall/spring or fall/winter/spring) before admission to a UC campus is a CCC. All UC campuses that offer TAG's require students to meet this definition.

Students who have already earned a bachelor's degree, graduate degree, and/or professional degree cannot receive a TAG. Students who have previously enrolled at a UC campus during a regular term (not including summer session) cannot submit a TAG application to return to that campus. Students concurrently enrolled in high school are not eligible for TAG.

For the most up-to-date information on TAG, visit our Career and Transfer Center and/or schedule an appointment with a counselor.

### **Limitations on Transfer Credit**

In order to receive transfer credit, a course must be approved by the UC and be listed on the Transfer Course Agreement (TCA) available in this catalog and on [assist.org](http://assist.org).

1. All lower division units, whether from a 2-year and/ or 4-year college/university are limited to a maximum of 70 semester (105 quarter) units toward the UC degree and do not put applicants at risk of being denied admission for excessive units.
  - a. Lower division units beyond the maximum for which credit is awarded will be granted subject credit and may be used to satisfy requirements.
  - b. Units earned through AP, IB, and/or A-Level examinations are not included in the limitation and do not put applicants at risk of being denied admissions.
  - c. Units earned at any UC campus (Extension, summer, cross/concurrent, and regular academic year enrollment) are not included in the limitation but are added to the maximum lower division credit allowed and might put applicants at risk of being denied admission due to excessive units.
  - d. Duplicative Credit: UC will not grant credit for college courses in which the content duplicates material of a previously completed course or examination for which credit has already been granted; with the exception of the repeat of deficient (D/F) course grades.
2. Grades of D - a grade of D (including plus/minus) in a transferable course will count toward the number of transferable units completed. However, students must earn a grade of C or better when completing the seven-course pattern and, in most cases, grades of D do not satisfy major or general education requirements.



3. The UC system allows a maximum of 14 semester units graded Pass/ No Pass.
4. Variable topics courses are reviewed after transfer by the enrolling institution and credit is given only after a review of the scope and content of the course and may require recommendations by faculty. This applies to courses in Independent Studies, Special Topics, and Field Work as well. Credit is not guaranteed. UC does not grant credit for variable topics courses in Journalism, Photography, Health, Business Administration, Architecture, Administration of Justice (Criminology) or Library Departments because of credit restrictions in these areas.
5. Internships may be presented for review after transfer but credit for internships rarely transfers to UC.
6. Honors courses: Duplicate credit will not be awarded for both the honors and regular versions of a course. Credit will only be awarded to the first course completed with a grade of C or better.
7. A maximum of 4 units of physical education activity (including intercollegiate athletics) will count towards degree or transfer unit requirements.
8. A maximum of 8 units of physical education theory courses will count towards degree or transfer unit requirements.
9. English as a Second Language Courses (ESL) and English Language Development (ELD): A maximum of 8 semester (12 quarter) units will earn transfer credit.
10. Students may take one series in Physics.
11. One course is allowed for credit in the areas of Health, First Aid, Business Law, College Success and Library Studies.

### **Military Coursework**

UC may award lower division (freshman/sophomore level) units for military courses completed if the courses are consistent with University policy on granting transfer credit when there is an equivalent course taught at a UC campus. UC will consult the ACE recommendations for information regarding course content and as a guide to the awarding of credit. Contact the individual UC campus for more information.

NOTE: UC does not grant credit for work experience, military/recruit basic training, vocational or technical training, and remedial academic or personal enrichment courses.

### **Course Sequences**

When requirements are stated as a full-year sequence, students are encouraged to complete the entire course series before transferring to avoid duplicating coursework. Also, the topics covered in a particular semester or quarter of the sequence at a community college may not be the same as at a UC campus.

Reference: <http://admission.universityofcalifornia.edu>, 2015;

<http://ucop.edu/transfer-articulation/transferable-course-agreements/tca-policy/credit-limitations.html>





# University of California Transfer Course Agreement (UC TCA) 2015-2016

This agreement lists courses transferable for unit credit at all UC campuses. How courses are applied may vary from campus to campus. Students are encouraged to go to [www.assist.org](http://www.assist.org) and research their intended major. New courses added to the TCA or removed after this catalog was published can also be found on [www.assist.org](http://www.assist.org). Courses that fulfill General Education requirements at all UC campuses can be found on the IGETC Certification Plan on page 79. All students planning to apply to the UC should also consult a counselor in the Counseling Office.

<b>American Ethnic Studies:</b> <b>AES</b> V01, V02A*, V02B*, V10, V11, V12, V20, V21A, V21B, V22*, V23, V24, V31, V40A*, V40B*, V41, V42A, V42B, V61, V63*, V65, V66, V67 (Any or All *AES and *HIST Combined: Max credit, four courses -12 units)	<b>Educational Assistance Center:</b> <b>EAC</b> V01, V21*, V25*, V26*, V27*, V28* (Any or All *PE Activity Combined: Max credit, 4 units)
<b>Anatomy:</b> <b>ANAT</b> V01* (*ANAT V01, ANPH V01 and/or PHSO V01 combined: Max credit, two courses)	<b>Engineering:</b> <b>ENGR</b> V02, V12, V16, V16L, V18, V18L
<b>Anatomy/Physiology:</b> <b>ANPH</b> V01* (*ANAT V01, ANPH V01 and/or PHSO V01 combined: Max credit, two courses)	<b>English:</b> <b>ENGL</b> V01A, V01B, V01C, V10, V11A, V11B, V15, V16, V21A, V21B, V22A, V22B, V23, V26, V29A+, V29B+, V30, V31, V33, V34, V35, V36A, V36B (+Max credit, one course)
<b>Anthropology:</b> <b>ANTH</b> V01, V01L, V02, V03, V04, V05, V06, V07	<b>Environmental Science and Resource Management:</b> <b>ESRM</b> V01, V02, V03, V11, V14, V23
<b>Architecture:</b> <b>ARCH</b> V23, V40, V41	<b>French:</b> <b>FREN</b> V01*, V02, V03, V04 (*Corresponds to two years of high school study)
<b>Art:</b> <b>ART</b> V01, V02A, V02B, V02C, V03, V04, V05, V06, V07, V08, V09, V11A, V11B, V12A, V12B, V13A, V13B, V13C, V13D, V15A, V15B, V15C, V16A, V16B, V19, V20A, V20B, V24, V25A, V25B, V26A, V26B, V31A, V31B, V33A, V33B, V34A, V34B, V34C, V36A, V36B, V37A, V37B, V38, V39A, V39B, V40A, V40B, V41A, V41B, V42A, V42B, V43A, V43B, V44A, V44B, V44C, V45A, V45B, V46A, V46B, V47A, V47B, V48, V50A, V51A, V51B, V52A, V52B, V53A, V53B, V54A, V54B, V69, V71+, V72+, V73A, V74A, V74B, (+V71 and V72 must both be taken for credit)	<b>Geographic Information Systems:</b> <b>GIS</b> V22
<b>Astronomy:</b> <b>AST</b> V01, V01L	<b>Geography:</b> <b>GEOG</b> V01, V01L, V02, V05, V06, V08, V22
<b>Biology:</b> <b>BIOL</b> V01*, V01L*, V03, V04, V10, V12*, V18, V23, V29, V29L, V30, V31, V41, V42 (*No credit for V01, V01L, or V12 if taken after V03)	<b>Geology:</b> <b>GEOL</b> V02, V02L, V03, V07, V11, V21
<b>Biotechnology:</b> <b>BIOT</b> V18, V30, V31, V42	<b>German:</b> <b>GERM</b> V01*, V02, V03, V04 (*Corresponds to two years of high school study)
<b>Business:</b> <b>BUS</b> V01A, V01B, V17, V30, V33*, V53* (*V33 and V53, combined: maximum credit, one course)	<b>Health Education:</b> <b>HED</b> V70, V82, V87, V92, V93+, V94, V95+, V97 (+ +HED V93 and V95 combined: Max credit, one course)
<b>Chemistry:</b> <b>CHEM</b> V01A, V01AL, V01B, V01BL, V05, V12A*, V12AL*, V12B, V12BL, V20+, V20L+, V21*, V21L*, V30, V30L, (+No credit for V20-V20L if taken after V01A -V01AL) (*V12A-12AL and V21-21L combined: Max credit, one course with lab - 5 units)	<b>History:</b> <b>HIST</b> V01A, V01B, V02A*, V02B*, V03A*, V03B*, V04A, V04B, V05A*, V05B*, V07A*, V07B*, V08, V10A, V10B, V12*, V13, V14A, V14B, V15, V16, V17*, V18A, V18B, V21, V30 (Any or All *AES and *HIST Combined: Max credit, four courses -12 units)
<b>Chicano Studies:</b> <b>CHST</b> V01, V02, V24	<b>Intercollegiate Athletics:</b> <b>ICA</b> V02*, V03*, V04*, V05*, V06*, V07*, V08*, V13*, V14*, V15*, V16*, V17*, V18*, V19*, V20*, V22*, V23*, V24*, V30A*, V30B*, V31A*, V31B*, V36+, V69* (Any or All *ICA and *PE Activity Combined: Max credit, 4 units) (Any or All +KIN Combined: Max credit, 8 units)
<b>Child Development:</b> <b>CD</b> V02*, V03*, V61 (V02 and V03 combined: max credit, one course)	<b>Interdisciplinary Studies:</b> <b>IDS</b> V08
<b>Communication Studies:</b> <b>COMM</b> V01, V03, V04, V05, V10, V12, V15, V16	<b>Italian:</b> <b>ITAL</b> V01*, V02, V03, V04 (*Corresponds to two years of high school study)
<b>Computer Science:</b> <b>CS</b> V04, V11, V13, V15, V17, V19, V20, V30, V40, V42	<b>Japanese:</b> <b>JAPN</b> V01*, V02(*Corresponds to two years of high school study)
<b>Criminal Justice:</b> <b>CJ</b> V01, V02, V03, V11A*, V11B*, V14, V25 (Any or All *CJ and *PE Activity Combined: Max credit, 4 units)	<b>Kinesiology:</b> <b>KIN</b> V02-V4*, V6*, V10*, V12*, V14*, V16*, V18*, V20*, V22*, V23*, V24*, V26*, V28*, V32*, V34*, V40A*, V40B*, V42A*, V42B*, V44A*, V44B*, V46A*, V46B*, V48A*, V48B*, V50A*, V50B*, V52*, V70A*, V70B*, V73*, V74A*, V74B*, V76A*, V76B*, V81+ (Any or All *KIN and *PE Activity Combined: Max credit, 4 units) (Any or All +KIN Combined: Max credit, 8 units)
<b>Dance:</b> <b>DANC</b> V01, V02, V04, V10A, V10B, V10C, V10D, V13A, V13B, V13C, V13D, V14, V15A, V15B, V15D, V23, V27, V29A, V29B, V29C, V29D, V30A, V30B, V30C, V30D, V50A, V50B, V50C, V50D	<b>Library Instruction:</b> <b>LIB</b> V01
<b>Drafting:</b> <b>DRFT</b> V05A	<b>Mathematics:</b> <b>MATH</b> V04*, V20*, V21A+, V21B, V21C, V22, V23, V38, V40, V44 ^, V46+, V52 (*V04 and V20 combined: maximum credit, one course.) (+V21A and V46 combined: maximum credit, one course) (^V44 and PSY V04 combined: maximum credit, one course)
<b>Economics:</b> <b>ECON</b> V01A, V01B	



<b>Microbiology:</b> <b>MICR</b> V01
<b>Music:</b> <b>MUS</b> V01+, V02A, V02AL, V02B, V02BL, V02C, V02CL, V02D, V02DL, V02E, V02F, V02G, V02H, V03, V05, V06, V07, V08, V09A-09B, V10, V11, V12, V13, V14A-C, V15, V17, V18, V21A-C, V22A-C, V24A-D, V27, V30, V31A-H, V34, V35, V36, V37, V45, V46, V47, V55A-C, V57A-B, V61A-B (+No credit for V01 if taken after V02A)
<b>Philosophy:</b> <b>PHIL</b> V01, V02, V03A, V03B, V04, V05, V06A, V06B, V09, V10
<b>Photography:</b> <b>PHOT</b> V01*, V02*, V4B, V07, V73A (*V01 and V02, combined: maximum credit, one course)
<b>Physical Science:</b> <b>PHSC</b> V01* (*No credit if taken after a college level course in Chemistry or Physics)
<b>Physics:</b> <b>PHYS</b> V01+, V02A*, V02AL*, V02B*, V02BL*, V03A*, V03AL*, V03B*, V03BL*, V04*, V04L*, V05*, V05L*, V06*, V06L* (+No credit for V01 if taken after V02A, V03A or V04; * V02A, V02AL, V02B, V02BL and V03A, A03AL, A03B, V03BL and V04, V04L, V05, V05L, V06, V06L combined: maximum credit, one series. Deduct credit for duplication of topics.

<b>Physiology:</b> <b>PHSO</b> V01* (*ANAT V01, ANPH V01 and/or PHSO V01 combined: Max credit, two courses)
<b>Political Science:</b> <b>POLS</b> V01, V02, V03, V04, V05, V08, V09, V10, V11, V12, V14, V15, V16
<b>Psychology:</b> <b>PSY</b> V01, V02, V03, V04 ^, V05, V07, V15, V25, V29, V30, V31 (^ V04 and MATH V44 combined: maximum credit, one course)
<b>Sign Language:</b> <b>SL</b> V10A*, V10B, V10C(*Corresponds to two years of high school study)
<b>Sociology:</b> <b>SOC</b> V01, V02, V03, V04, V05, V07, V13, V24, V31
<b>Spanish:</b> <b>SPAN</b> V01*, V02, V03**, V03S**, V04+, V04S+, V20(*Corresponds to two years of high school study) (**V03 and V03S combined; Max credit, one course)(+V04 and V04S combined; Max credit, one course)
<b>Theater Arts:</b> <b>THA</b> V01, V02A, V02B, V05A, V05B, V06A, V06B, V10A, V10B, V10C, V10D, V14, V20, V21, V22A, V22B, V23, V29, V31A, V31B



# INTERSEGMENTAL GENERAL EDUCATION TRANSFER CURRICULUM (IGETC) CERTIFICATION PLAN 2015-2016

## For the University of California (UC) and California State University (CSU)

**Area 1: ENGLISH COMMUNICATION:** Each course must be three (3) semester units (4-5 qtr. units).

**CSU:** complete one (1) course from each group A, B, & C.

**UC:** complete one (1) course from group A and one (1) course from group B.

**A: English Composition:** ENGL V01A

**B: Critical Thinking - English Composition** (Must have English Composition as a prerequisite –cannot be met by AP exam credit):  
ENGL V01B\*; PHIL V05.

**C: Oral Communication** (CSU requirement ONLY): COMM V01, V03, V10, V15\*.

**Area 2: MATHEMATICAL CONCEPTS AND QUANTITATIVE REASONING:** complete one (1) course of at least three (3) semester units (4-5 qtr. units)

CS V17; MATH V04+, V20+, V21A+, V21B, V21C, V22, V23, V40, V44+, V46+, V52; PSY V04+.

**Area 3: ARTS AND HUMANITIES:** complete at least three (3) courses of at least three (3) semester units each (4-5 qtr. units), with at least one (1) course from Group A Arts and one (1) course from Group B Humanities and the third course from either group for a total of nine (9) semester units (12-15 qtr. units) in Area 3.

**A: Arts:** AES V10, V12, V65, V66, V67; ART V01, V02A, V02B, V02C, V03, V04, V05, V06, V07, V08, V09; DANC V01, V02; ENGL V29A+, V29B+; MUS V03, V06, V07, V08, V09A, V09B; PHOT V07; THA V01, V20, V29.

**B: Humanities:** AES V31, V61\*, V63\*+; ENGL V01B\*, V15, V16, V21A, V21B, V22A, V22B, V23, V26, V30, V31, V33, V34, V35, V36A, V36B; FREN V02\*, V03\*, V04\*; GERM V02\*, V03\*, V04\*; HIST V01A\*, V01B\*, V15\*, V17\*+, V18A\*, V18B\*; IDS V08; ITAL V02\*, V03\*, V04\*; JAPN V02\*; PHIL V01, V02, V03A, V03B, V06A, V06B, V09, V10\*; SL V10B\*, V10C\*; SPAN V02\*, V03\*+, V03S\*+, V04\*+, V04S\*+, V20; THA V23.

**Area 4: SOCIAL AND BEHAVIORAL SCIENCES:** complete at least three (3) courses, of at least three (3) semester units each (4-5 qtr. units) from at least two (2) disciplines for a total of nine (9) semester (12-15 qtr. units) in Area 4.

**A: Anthropology and Archeology:** AES V01; ANTH V02, V03, V04, V05, V06, V07.

**B: Economics:** ECON V01A, V01B.

**C: Ethnic Studies:** AES V01, V02A+, V02B+, V11, V20, V22+, V23, V24, V40A+, V40B+, V41, V63\*+; ANTH V04; CHST V01, V02, V24; COMM V12; HIST V03A+, V03B+, V05A+, V05B+, V12+, V13, V17\*+; PSY V30; SOC V03, V24.

**D: Gender Studies:** ANTH V06; HIST V02A+, V02B+; PSY V25; SOC V04.

**E: Geography:** GEOG V02, V06, V08.

**F: History:** AES V02A+, V02B+, V21A, V21B, V22+, V40A+, V40B+, V41, V42A, V42B, V61\*, V63\*+; HIST V01A\*, V01B\*, V02A+, V02B+, V03A+, V03B+, V04A, V04B, V05A+, V05B+, V07A, V07B, V08, V10A, V10B, V12+, V13, V14A, V14B, V15\*, V16, V17\*+, V18A\*, V18B\*, V21.

**G: Interdisciplinary, Social & Behavioral Sciences:** CD V03+, V61; COMM V12, V15\*^, V16; PHIL V10\*.

**H: Political Science, Government & Legal Institutions:** ESRM V03; POLS V01, V02, V03, V04, V05, V11, V12, V14, V15, V16.

**I: Psychology:** PSY V01, V02, V05, V07, V15, V25, V29, V30, V31; SOC V31.

**J: Sociology & Criminology:** AES V11, V24; CHST V24, PSY V31; SOC V01, V02, V03, V04, V05, V07, V13, V24, V31.

**Area 5: PHYSICAL AND BIOLOGICAL SCIENCES:** complete two (2) courses, one (1) from group A and one (1) from group B; one (1) of which must include a laboratory corresponding to selected lecture course; 7 - 9 semester (9-12 quarter units) in Area 5. Each course must be at least three (3) semester units (4-5 qtr. units), except separate lab courses.

**A: Physical Science:** AST V01; CHEM V01A, V01B, V05, V12A+, V12B, V20+, V21+, V30; ESRM V02, V11; GEOG V01, V05; GEOL V02, V03, V07, V11, V21; PHSC V01+; PHYS V01+, V02A+, V02B+, V03A+, V03B+, V04+, V05+, V06+.

**B: Biological Science:** ANAT V01+; ANPH V01+; ANTH V01; BIOL V01+, V03, V04, V10, V12+, V18, V23, V29; BIOT V18; ESRM V01; MICR V01; PHSO V01+; PSY V03.

**C: Laboratory Science:** ANAT V01+; ANPH V01+; ANTH V01L; AST V01L; BIOL V01L+, V03, V04, V23, V29L; CHEM V01AL, V01BL, V05, V12AL+, V12BL, V20L+, V21L+, V30L; ESRM V11; GEOG V01L; GEOL V02L; MICR V01; PHSC V01+; PHSO V01+; PHYS V01+, V02AL+, V02BL+, V03AL+, V03BL+, V04L+, V05L+, V06L+. (Must include a corresponding lecture course from above.)

**Area 6: LANGUAGE OTHER THAN ENGLISH (UC REQUIREMENT ONLY):** Languages other than English. Proficiency equivalent to two (2) years of high school in the same language with a "C" or better, or one (1) of the following courses with a "C" or better:

FREN V01, V02\*, V03\*, V04\*; GERM V01, V02\*, V03\*, V04\*; ITAL V01, V02\*, V03\*, V04\*; JAPN V01, V02\*; SL V10A, V10B\*, V10C\*; SPAN V01, V02\*, V03\*+, V03S\*+, V04\*+, V04S\*+.

High School \_\_\_\_\_ Other college course \_\_\_\_\_ AP Exam \_\_\_\_\_ Foreign high school \_\_\_\_\_

**CSU GRADUATION REQUIREMENT IN U.S. HISTORY, CONSTITUTION AND AMERICAN IDEALS:** 6 units

Not part of IGETC; may be completed prior to transfer. One course from Group 1 and one course from Group 2. May also be used in Area 4 at the discretion of the CSU campus.

**Group 1:** AES V02A, V02B, V22, V40A, V40B, V61, V63\*+; HIST V02A, V02B, V03A, V03B, V04B, V05A, V05B, V07A, V07B, V12, V15, V17+.

**Group 2:** POLS V01, V03.

*\*Courses listed in multiple areas shall not be certified in more than one area except for courses in Language Other Than English, which can be certified in both Areas 3B and 6A.*

*+Transfer credit is limited by either UC or CSU or both. \*^HIST V15 will no longer meet CSU US History requirement effective Fall 2016.*

*IGETC Certification must be requested prior to transferring. See UC TCA on previous pages for details on UC transfer limitations and consult with a counselor for all limitations. Certification is not automatic. See your counselor or the Transfer Center. Students completing IGETC Certification may also apply for a Certificate of Achievement.*



# IGETC INFORMATION

**Reference: The 2014 IGETC Standards, Policies and Procedures Version 1.5**  
**[www.universityofcalifornia.edu](http://www.universityofcalifornia.edu)**

## What is IGETC?

The Intersegmental General Education Transfer Curriculum (IGETC) is a series of courses that prospective transfer students attending California community colleges may complete to satisfy the lower-division breadth/general education requirements at both the University of California and the California State University. Many independent/private and out-of-state colleges and universities will also accept the IGETC.

## Students who may use IGETC?

The IGETC was developed by the Academic Senates of the CCC, UC and CSU for use by California Community College transfer students. A student may be IGETC certified if they have completed coursework at a California Community College(s) without regard to current enrollment status or number of units accrued at a CCC.

Students who enroll at a UC or CSU campus, then leave and attend a community college, and subsequently return to a different UC or CSU campus may use the IGETC.

## Students who are NOT eligible to use the IGETC

Students who initially enroll at a UC campus, then leave and attend a community college, and subsequently return to the same campus are considered "readmits" by the UC. Such students cannot use the IGETC. CSU does not have a system-wide policy that addresses this issue. Questions regarding the use of IGETC for a student who has recently been enrolled at a CSU should be directed to the specific campus the student wishes to attend.

## Which type of student should follow the IGETC

IGETC is most helpful to students who want to keep their options open - specifically, those who know they want to transfer but haven't yet decided upon a particular institution, campus or major.

## Which type of student should not follow the IGETC?

Students who intend to transfer into majors that require extensive lower-division preparation, such as engineering or the physical and natural sciences, should concentrate on completing the many prerequisites for the major that the college screens for to determine eligibility for admission.

## Is completion of IGETC an admission requirement?

IGETC is not an admission requirement. Completing it does not guarantee admission to the campus or program of choice. However, completing the lower-division breadth/general education requirements - whether through IGETC or the campus-specific requirements - may be considered by the campus in selecting among qualified applicants.

NOTE: UC Berkeley's College of Letters and Sciences requires full completion of the IGETC pattern as selection criteria for admission into the College.

## Certification of IGETC

Completion of the IGETC will permit a student to transfer from a California Community College to a California State University (CSU) or University of California (UC) campus generally without the need, after transfer, to take additional lower-division, general education courses to satisfy campus general education requirements. It is strongly recommended that students complete IGETC prior to transfer. Advantages of completing IGETC include more flexibility in class selection at the university and timely progress to degree completion. All UC and CSU campuses will accept the completed IGETC to satisfy all lower division general education requirements. However, individual colleges or majors within a CSU or UC campus may not accept IGETC for meeting general education. Refer to IGETC Considerations (page 82) section of the catalog for more information.

It is the student's responsibility to request IGETC Certification in the Counseling Office. It is strongly recommended that students complete IGETC prior to transfer. Advantages of completing IGETC include more flexibility in class selection at the university and timely progress to degree completion.

There is no limitation on the number of courses completed at other United States regionally accredited institutions that can be included in the IGETC certification.

Note: Students transferring to a CSU with a completed IGETC will still need to complete 9 semester units of upper division general education and may be held to other campus specific graduation requirements outside of general education and major coursework.

## Partial IGETC Certification

Partial certification is defined as completing all but two (2) courses on the IGETC pattern. Each UC or CSU campus will inform a student that has submitted a partial certification of IGETC of the specific timelines and courses needed to complete the IGETC. The UC or CSU is responsible for verifying that the missing IGETC course(s) has been completed. Students may complete the missing course(s) at a California Community College or other U.S. regionally accredited institution approved by the CSU or UC campus of attendance either during the summer or while concurrently enrolled depending on the concurrent enrollment rules at their CSU or UC campus.

NOTE: Deficiencies in IGETC Areas 1 and/or 2 may indicate a student does not meet minimum transfer admission requirements.

## Who Certifies the IGETC?

Students who have completed coursework at more than one California Community College (CCC) should have their coursework certified by the last California Community College they attended for a regular term (fall or spring for semester schools; fall, winter, or spring for quarter schools) prior to transfer. If a student requests certification from a California Community College that is not the last school of attendance, it is at the discretion of that community college to certify. IGETC certification will be processed without regard to current enrollment status or number of units accrued at a particular CCC.

## Minimum Grade Requirements

A minimum “C” grade is required in each college course for IGETC. A “C” is defined as a minimum of 2.0 grade points on a 4.0 scale. Courses in which a student receives a “Pass/Credit” grade may be certified for IGETC if the community college’s policy states that a “Pass/Credit” designation is equivalent to a “C” grade or better at the institution where the course was taken.

NOTE: the UC system allows a maximum of 14 semester units graded on a “Pass/No Pass” (Credit/No Credit) basis of the 60 transferable units required for admission. In addition, some UC or CSU campuses may have limitations on Pass/No pass courses that may be used to meet degree requirements.

## Minimum Unit Value

A course must have a minimum unit value of 3 semester or 4 quarter units to meet the requirements for IGETC. It is not acceptable to take three 1 unit courses to fulfill a 3 unit requirement because of the lack of depth or rigor.

**Exception:** 3-quarter unit Math and English courses that satisfy IGETC Area/s 1A or 2 may be applied if they are a part of a sequence, and at least two of the 3-quarter unit sequence courses have each been completed with “C” grade (2.0 on a 4.0 scale) or higher. The course sequence must meet the rigor of IGETC.

## CSU U.S. History, Constitution, and American Ideals Requirement

The CSU U.S. History, Constitution, and American Ideals graduation requirement is not part of IGETC. Courses used to satisfy this requirement may also be listed in IGETC Subject Areas 3B and/or 4. CSU campuses have the discretion whether to allow courses used to satisfy the CSU U.S. History, Constitution, and American Ideals graduation requirement to also count in Areas 3B/4.

## Coursework from Another California Community College

Coursework completed at another California Community College should be applied to the subject area in which it is listed by the institution where the work was completed. In addition, the course must have been IGETC approved in the area it was taken at the time it was taken. Approval dates can be verified by consulting the website [assist.org](http://assist.org). Courses with an approval date of fall 1991 may be applied to the IGETC if completed prior to fall 1991. Courses approved after fall 1991 may only be applied if completed on or after the approval date.

## Non-California Community College Courses

Appropriate non-CCC general education courses in the humanities, mathematics, social sciences, and natural sciences that are completed at United States regionally accredited institutions should be routinely included in IGETC. However, care should be taken to carefully scrutinize course outlines for content, prerequisites, texts, units, and IGETC Area Standards (See Section 10.0 for Standards).

Particular care should be taken when evaluating non-CCC courses to fulfill IGETC Area 1B, Critical Thinking and Composition. Few non-CCC second semester English Composition courses offer a course in Critical Thinking/English Composition. Guidelines to determine if a course is appropriate can be found in Section 10.1.2b.

## Coursework from all Other United States Regionally Accredited Institutions

Coursework from all other United States regionally accredited institutions should be deemed by the CCC faculty in the discipline or their designee to be comparable to coursework on that community college’s approved IGETC course list before it is allowed to fulfill IGETC requirements. The course should then be used in the same subject areas as those for the community college completing the certification. Upper division work may also be used in limited circumstances. See IGETC standards 5.2.2 for criteria. There is no limitation on the number of courses completed at other United States regionally accredited institutions that can be included in the IGETC certification.

## Foreign Coursework

Foreign coursework may be applied to IGETC if the foreign institution has United States regional accreditation. All other foreign coursework cannot be applied to IGETC with the exception of Area 6, Language Other Than English (LOTE), these can be from non-United States institution. (See Section 10.6.1 for details on Language Other than English). Students with a substantial amount of foreign coursework at a non-United States regionally accredited institution should be encouraged to follow the CSU or UC campus specific general education pattern.

## Online/Distance Education/Telecourses:

### • CCC Courses

California Community Colleges may use online/distance education/telecourses for IGETC provided that the courses have been approved by the CSU and UC during the IGETC course review process. The relevant CCC Code of Regulations for distance education courses can be found in Title 5, Sections 55205 through 55215.

### • Non-CCC Courses

Non-CCC Institutions online/distance education/telecourses may be used on IGETC. The same scrutiny should be applied when reviewing these courses as when reviewing other non-CCC courses. (See Section 5.2 of IGETC Standards for guidelines).

### • Area 1C: Oral Communication (CSU Only)

Strictly online Oral Communication courses may not be used on IGETC Area 1C (CSU Only). (See Section 10.1.3a) Hybrid-delivery courses may meet the area criteria.

Reference: The 2014 IGETC Standards, Policies and Procedures Version 1.5; [www.universityofcalifornia.edu](http://www.universityofcalifornia.edu)

## Credit by External Exams

Advanced Placement (AP) and International Baccalaureate (IB) exams can provide IGETC credit as listed on the AP and IB GE charts included in this catalog. CLEP (College Level Examination Program) cannot be used on IGETC.

There is no limit on the number of external exams that can be applied to IGETC. However, Students who have earned credit from an external exam should not take a comparable college course because transfer credit will not be granted for both.

### **Advanced Placement Exam (AP)**

UC grants credit for College Board Advanced Placement (AP) examinations on which a student scores 3 or higher. Elective units awarded may be applied to UC graduation requirements for specific subjects and/or for general education/breadth requirements, as determined by each campus. **See AP chart on pg\_**

### **International Baccalaureate (IB)**

A score of 5 or higher on Higher Level is required to grant credit for IGETC certification. An acceptable IB score for IGETC equates to either 3 semester or 4 quarter units for certification purposes.

Credit by exam is acceptable provided that a United States regionally accredited college or university transcript specifies the course title,

unit value, and grade. A "Credit/Pass" designation is acceptable provided that the institution's policy states that a "Credit/Pass" designation is equivalent to a "C" grade (2.0 grade points on a 4.0 grade scale) or better. The course must be deemed comparable by the CCC faculty in the discipline or its designee as defined in IGETC standards Section 5.2.

There is no limit on the number of external exams that can be applied to IGETC. Advanced Placement and International Baccalaureate exams can provide IGETC credit as listed on the AP and IB GE charts included in this catalog. CLEP (College Level Examination Program) cannot be used on IGETC. Students who have earned credit from an external exam should not take a comparable college course because transfer credit will not be granted for both. Credit by exam is acceptable provided that a United States regionally accredited college or university transcript specifies the course title, unit value, and grade. A "Credit/Pass" designation is acceptable provided that the institution's policy states that a "Credit/Pass" designation is equivalent to a "C" grade (2.0 grade points on a 4.0 grade scale) or better. The course must be deemed comparable by the CCC faculty in the discipline or its designee as defined in IGETC standards Section 5.2.



# IGETC Considerations

If you have completed substantial coursework from institutions outside the United States, consult a counselor to determine whether you should complete IGETC or the lower-division breadth/general education requirements at the campus you plan to attend. In addition, some transfer students in some colleges or majors must follow a more prescribed lower-division curriculum than IGETC allows. These are described below. Check with a counselor, the college and/or visit [www.assist.org](http://www.assist.org) to obtain the most current information.

## Berkeley

**College of Letters and Science:** Either IGETC or the college's requirements (Reading and Composition, Quantitative Reasoning, and Language Other than English) are acceptable.

**Colleges of Engineering and Chemistry:** In general, IGETC is not appropriate.

**College of Natural Resources:** IGETC is acceptable; however specific lower division major requirements must still be satisfied.

**College of Environmental Design:** IGETC is acceptable with full certification to fulfill CED's breadth requirements. Partial certification will not complete the requirements.

**Haas School of Business:** IGETC is not accepted.

## Davis

**All under graduate colleges accept IGETC.** However, Bachelor of Science degrees and high-unit majors often have many courses for lower-division preparation; in these cases, IGETC is not recommended and the UC Davis general education pattern is the better choice.

## Irvine

**All schools accept IGETC.** However, selection by the campus is based on demonstrated academic achievement and preparation for the intended major.

## Los Angeles

**IGETC is acceptable in all schools except** The Henry Samueli School of Engineering and Applied Science.

## Merced

**School of Engineering:** IGETC is strongly discouraged but accepted as students are encouraged to focus on lower-division major preparation prior to transfer.

**School of Natural Sciences:** IGETC is not recommended but accepted as students are encouraged to focus on lower-division major preparation prior to transfer.

**School of Social Sciences, Humanities, and Arts:** IGETC is recommended and students are encouraged to complete as much lower-division major preparation as possible prior to transfer.

## Riverside

**College of Humanities, Arts and Social Sciences:** IGETC is recommended.

**College of Natural and Agricultural Sciences:** IGETC is not accepted.

**The Marlan and Rosemary Bourns College of Engineering:** IGETC is acceptable; some additional coursework may be required after enrollment.

**School of Business Administration (SOBA):** IGETC is required.

## San Diego

**John Muir, Earl Warren, Thurgood Marshall and Sixth Colleges:** IGETC is acceptable.

**Eleanor Roosevelt and Revelle Colleges:** IGETC is acceptable; however some additional coursework may be required after enrollment.

## Santa Barbara

**College of Letters and Science:** IGETC is acceptable.

**College of Creative Studies:** IGETC is acceptable.

**College of Engineering:** Students are encouraged to focus on major preparation rather than general education, but may use IGETC to substitute for most general education requirements. However, some additional coursework may be required after enrollment to complete the depth requirement if not satisfied during IGETC certification.

**PLEASE NOTE:** Students planning to transfer into a major in engineering, computer science or biological or physical sciences must be careful to complete lower-division major prerequisites to ensure competitiveness and make normal, timely progress through their major.

## Santa Cruz

For majors in the physical and biological sciences or the Jack Baskin School of Engineering, IGETC is not recommended. Students should ensure completion of lower-division courses for their intended major, as indicated in the UCSC Catalog and on [www.assist.org](http://www.assist.org).

Reference (May 2015): <http://admission.universityofcalifornia.edu/counselors/transfer/advising/igetc/>



# Transfer to an Independent or Private and/or Out-of-State College

Students who are planning to transfer to an independent/private college or university outside of the UC and CSU system should refer to the catalog and website of that particular school for specific admission and lower division requirements.

California's independent colleges and universities are an excellent choice for many students. There are over 75 private nonprofit, independent colleges and universities in the state. The most important criteria for selecting a college or university is how well it fits with your personality, values, and goals. Because every nonprofit, independent college and university has a unique character, there will be at least one that fits your needs. Unlike the University of

California or the California State University systems, each California nonprofit, independent college and university has its own Governing Board. This independence allows for a diverse set of college opportunities in California. Many independent colleges belong to the AICCU (Association of Independent California Colleges and Universities). You can explore these colleges and majors available at [www.aiccu.edu](http://www.aiccu.edu) and compare and contrast CSU/UC/Independent colleges at [www.californiacolleges.edu](http://www.californiacolleges.edu). For assistance in planning a transfer program to an independent institution or an out-of-state college, students should schedule an appointment with a counselor in the Counseling Department. Articulation agreements for some local universities can be found at [www.aiccu.edu](http://www.aiccu.edu).

## 2. S.F. Bay Area — 20

California College of the Arts - San Francisco  
Calif. Institute of Integral Studies - San Francisco  
Dominican University of California - San Rafael  
Golden Gate University - San Francisco  
Holy Names University - Oakland  
Menlo College - Atherton  
Mills College - Oakland  
Notre Dame de Namur University - Belmont  
Pacific Union College - Angwin  
Palo Alto University - Palo Alto  
Saint Mary's College of California - Moraga  
Samuel Merritt College - Oakland  
San Francisco Art Institute - San Francisco  
San Francisco Conservatory of Music - San Francisco  
Santa Clara University - Santa Clara  
Saybrook University - San Francisco  
Sofia University - Santa Clara  
Stanford University - Stanford  
Touro University California - Vallejo  
University of San Francisco - San Francisco

## 5. Los Angeles/Kern — 30

Amer. Academy of Dramatic Arts - L.A. Hollywood  
American Jewish University - Bel Air  
Antioch University Los Angeles - Los Angeles  
Art Center College of Design - Pasadena  
Azusa Pacific University - Azusa  
Biola University - La Mirada  
California Institute of Technology - Pasadena  
California Institute of the Arts - Valencia  
Chicago School of Prof. Psychology - L.A.  
Claremont Graduate University - Claremont  
Claremont McKenna College - Claremont  
Harvey Mudd College - Claremont  
Keck Graduate University - Claremont  
Loyola Marymount University - Los Angeles  
Marymount College\* Rancho - Palos Verdes

Master's College - Santa Clarita  
Mount St. Mary's College - L.A.  
Occidental College - Los Angeles  
Otis College - Los Angeles  
Pacific Oaks College - Pasadena  
Pepperdine University - Malibu  
Pitzer College - Claremont  
Pomona College - Claremont  
Scripps College - Claremont  
So. Cal Univ. of Health Sciences - Whittier  
University of La Verne - La Verne  
Univ. of Southern California - Los Angeles  
Western Univ. of Health Sciences - Pomona  
Whittier College - Whittier  
Woodbury University - Burbank

## 1. Northern California — 1

Simpson University - Redding

## 3. Central Valley — 4

Fresno Pacific University - Fresno  
Humphreys College - Stockton  
University of the Pacific - Stockton  
William Jessup University - Rocklin

## 4. Central Coast — 4

California Lutheran University - Thousand Oaks  
Fielding Graduate University - Santa Barbara  
Thomas Aquinas College - Santa Paula  
Westmont College - Santa Barbara

## 7. Riverside/San Bernardino — 4

California Baptist University - Riverside  
La Sierra University - Riverside  
Loma Linda Univ. - Loma Linda  
Univ. of Redlands - Redlands

## 8. San Diego/Imperial — 5

Alliant International University - San Diego  
National University - La Jolla  
Point Loma Nazarene University - San Diego  
San Diego Christian College - El Cajon  
University of San Diego - San Diego

## 6. Orange — 7

Brandman University - Irvine  
Chapman University - Orange  
Concordia University Irvine - Irvine  
Hope International University - Fullerton  
Laguna College of Art & Design - Laguna Beach  
Soka University - Aliso Viejo  
Vanguard University - Costa Mesa





# California Independent Colleges and Universities

## General Education Articulation Information

While IGETC is the general education pattern for the UC and CSU system, some independent/private colleges and universities also accept IGETC and/or CSU GE-Breadth in lieu of their own General Education patterns. Independent Colleges and Universities that accept at least one of these patterns are listed below. Some do require additional general education courses after transfer. Policies and GE requirements are subject to change. Students are encouraged to check with each college admission office to verify their most current policies.

College or University	Accepts IGETC	Accepts CSU GE-Breadth Pattern	Additional GE	Website
Alliant International University	Yes	Yes	No	<a href="http://www.alliant.edu">www.alliant.edu</a>
Azusa Pacific University	Yes	Yes	Yes*	<a href="http://www.apu.edu">www.apu.edu</a>
Biola University	Yes	No	Yes*	<a href="http://www.biola.edu">www.biola.edu</a>
Brandman University	Yes	Yes	No	<a href="http://www.brandman.edu">www.brandman.edu</a>
California Baptist University	Yes	Yes	Yes*	<a href="http://www.calbaptist.edu">www.calbaptist.edu</a>
California College of Arts	Yes	Yes	Yes*	<a href="http://www.cca.edu">www.cca.edu</a>
California Lutheran University	Yes	No	Yes*	<a href="http://www.callutheran.edu">www.callutheran.edu</a>
Chapman University	Yes	Yes	Yes*	<a href="http://www.chapman.edu">www.chapman.edu</a>
Concordia University	Yes	Yes	Yes*	<a href="http://www.cui.edu">www.cui.edu</a>
Fresno Pacific University	Yes	No	Yes*	<a href="http://www.fresno.edu">www.fresno.edu</a>
Golden Gate University	Yes	Yes	Yes*	<a href="http://www.ggu.edu">www.ggu.edu</a>
Holy Names University	Yes	No	Yes*	<a href="http://www.hnu.edu">www.hnu.edu</a>
Hope International University	Yes	Yes	Yes*	<a href="http://www.hiu.edu">www.hiu.edu</a>
Humphreys College	Yes	Yes	Yes*	<a href="http://www.humphreys.edu">www.humphreys.edu</a>
La Sierra University	Yes	No	No	<a href="http://www.lasierra.edu">www.lasierra.edu</a>
Laguna College of Art & Design	Yes	Yes	Yes*	<a href="http://www.lagunacollege.edu">www.lagunacollege.edu</a>
Loma Linda University	Yes	Yes	Yes*	<a href="http://www.llu.edu">www.llu.edu</a>
Loyola Marymount University	Yes	Yes	Yes*	<a href="http://www.lmu.edu">www.lmu.edu</a>
Marymount College	Yes	Yes	Yes*	<a href="http://www.marymount.edu">www.marymount.edu</a>
Menlo College	Yes	No	Yes*	<a href="http://www.menlo.edu">www.menlo.edu</a>
Mills College	Yes	Yes	Yes*	<a href="http://www.mills.edu">www.mills.edu</a>
Mount St. Mary's College	Yes	Yes	Yes*	<a href="http://www.msmc.la.edu">www.msmc.la.edu</a>
National University	Yes	Yes	Yes*	<a href="http://www.nu.edu">www.nu.edu</a>
Notre Dame de Namur University	Yes	Yes	Yes*	<a href="http://www.ndnu.edu">www.ndnu.edu</a>

\* See the college catalog or website for more information.

*GE Articulation Information continued on next page*

**GE Articulation Information continued from previous page**

Occidental College	Yes	Yes	Yes*	www.oxy.edu
Pacific Union Univeristy	Yes	No	-	www.puc.edu
Pepperdine University	Yes	Yes	Yes*	www.pepperdine.edu
Pitzer College	Yes	Yes	Yes*	www.pitzer.edu
Point Loma Nazarene University	Yes	Yes	Yes*	www.ptloma.edu
Pomona College	Yes	Yes	Yes*	www.pomona.edu
Saint Mary's College of California	Yes	No	Yes*	www.stmarys-ca.edu
San Diego Christian College	Yes	Yes	Yes*	www.sdcc.edu
San Francisco Conservatory of Music	Yes	Yes	Yes*	www.sfcm.edu
Scripps College	Yes	No	Yes*	www.scrippscollege.edu
Simpson University	Yes	Yes	Yes*	www.simpsonuniversity.edu
University of La Verne	Yes	Yes	Yes*	www.ulv.edu
University of Redlands	Yes	Yes	Yes*	www.redlands.edu
University of San Diego	Yes	Yes	Yes*	www.sandiego.edu
University of San Francisco	Yes	Yes	Yes*	www.usfca.edu
University of the Pacific	Yes	Yes	Yes*	www.pacific.edu
Vanguard University of Southern California	Yes	Yes	Yes*	www.vanguard.edu
Westmont College	Yes	No	Yes	www.westmont.edu
Whittier College	Yes	Yes	Yes	www.whittier.edu
William Jessup University	Yes	Yes	Yes	www.jessup.edu
Woodbury University	Yes	Yes	Yes*	www.woodbury.edu

**Extracted from AICCU website 2015**

**[https://secure.californiacolleges.edu/college\\_planning/california\\_independent\\_colleges/Admission\\_Requirements/Transfer\\_Admission.aspx](https://secure.californiacolleges.edu/college_planning/california_independent_colleges/Admission_Requirements/Transfer_Admission.aspx)**

\* See the college catalog or website for more information.