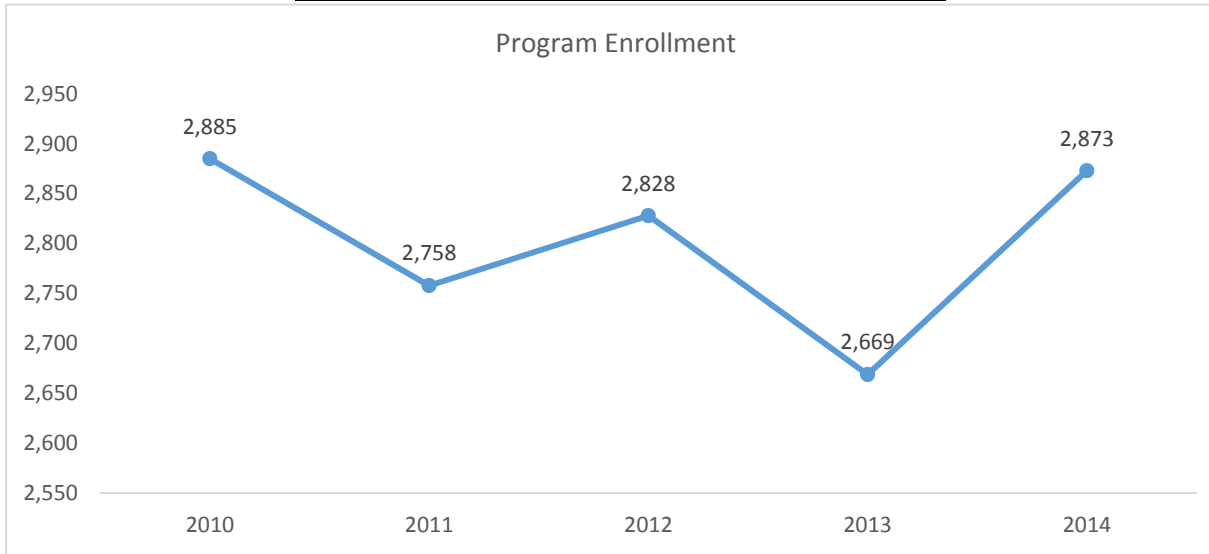


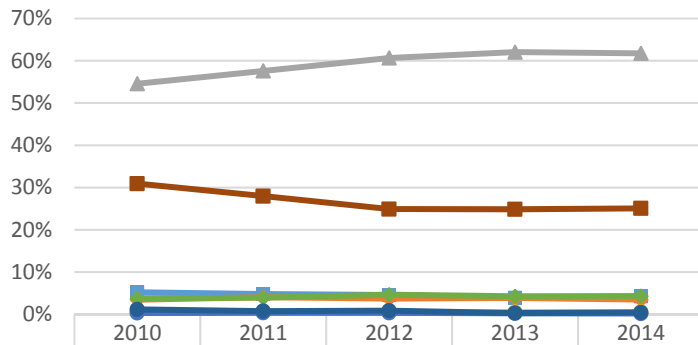
2015-2016 Program Review Datasheet

SOC

Section A - Enrollment and Student Demographics

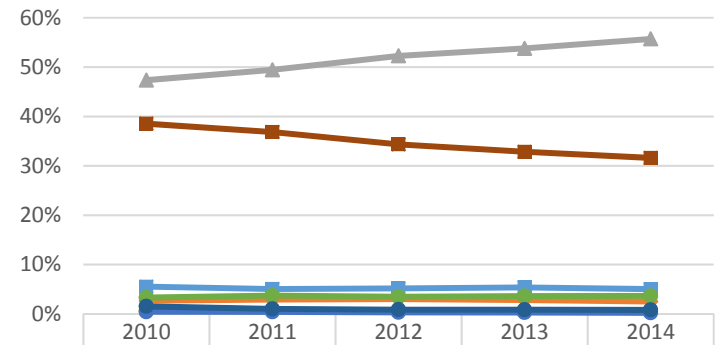


Student Ethnicity - SOC



	2010	2011	2012	2013	2014
Asian	5.2%	4.8%	4.6%	4.0%	4.3%
Black	3.5%	4.0%	3.7%	3.9%	3.5%
Hispanic	54.6%	57.6%	60.7%	62.1%	61.8%
Native Amer	0.6%	0.6%	0.3%	0.5%	0.5%
Pac Island	0.3%	0.3%	0.3%	0.2%	0.2%
Two or More	3.8%	3.9%	4.6%	4.3%	4.3%
Unknown	1.1%	0.8%	0.8%	0.3%	0.4%
White	30.9%	28.0%	24.9%	24.9%	25.1%

Student Ethnicity - Ventura College

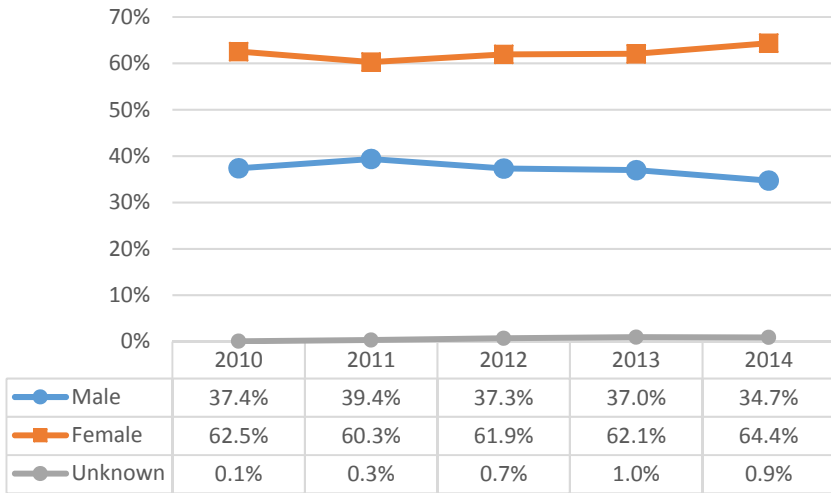


	2010	2011	2012	2013	2014
Asian	5.5%	5.1%	5.2%	5.4%	5.0%
Black	2.7%	2.9%	3.0%	2.8%	2.5%
Hispanic	47.4%	49.4%	52.3%	53.8%	55.7%
Native Amer	0.6%	0.6%	0.5%	0.4%	0.4%
Pac Island	0.4%	0.4%	0.3%	0.3%	0.2%
Two or More	3.3%	3.7%	3.5%	3.6%	3.6%
Unknown	1.5%	1.0%	0.9%	0.9%	0.8%
White	38.5%	36.8%	34.4%	32.8%	31.6%

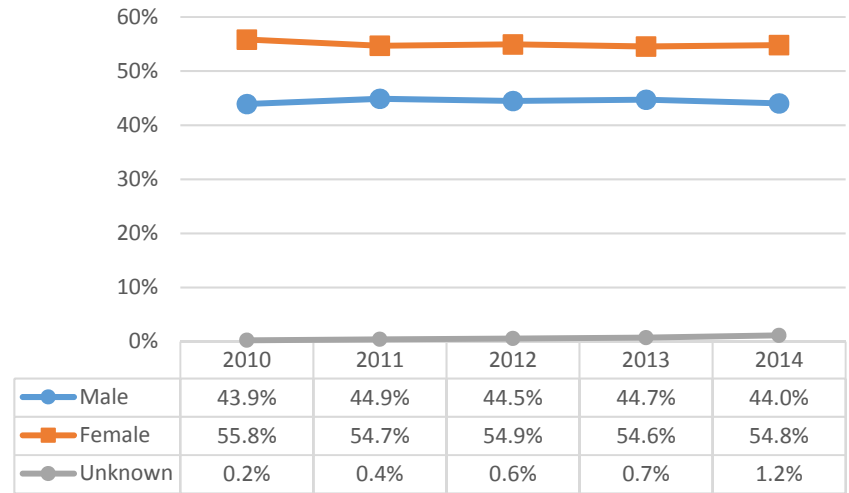


2015-2016 Program Review Datasheet SOC

Student Gender - SOC

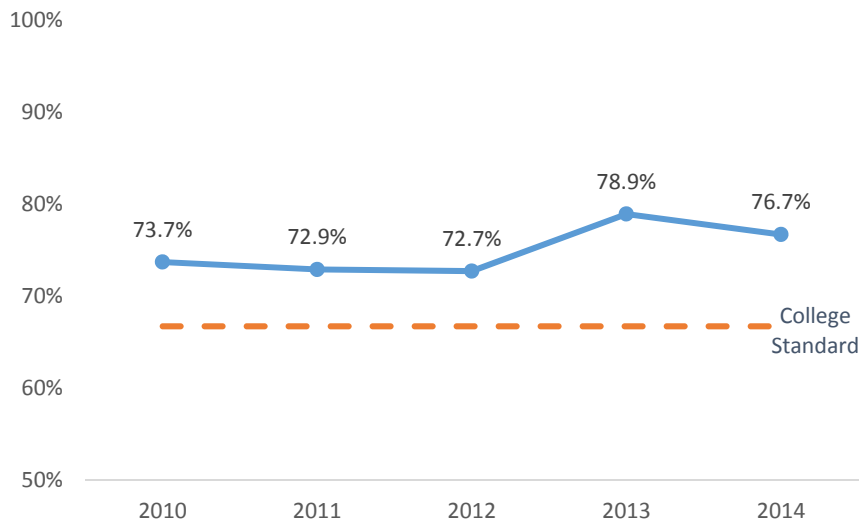


Student Gender - Ventura College

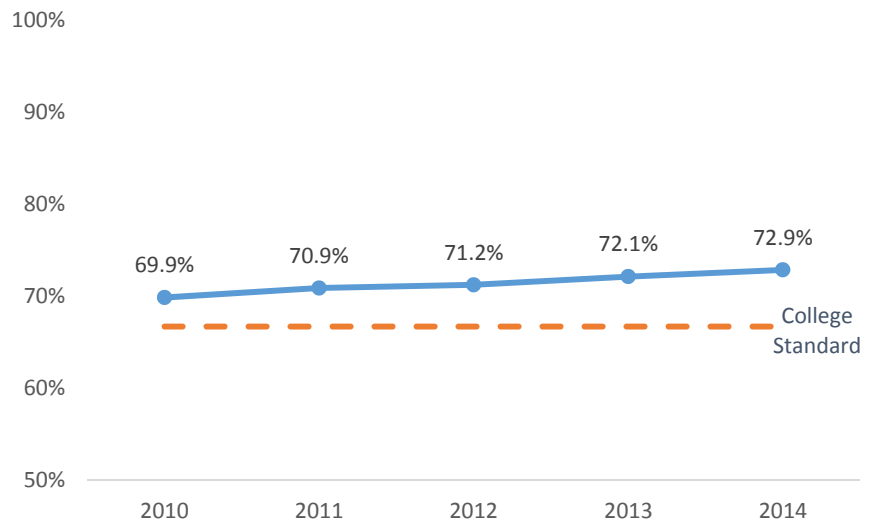


Section B - Course Success Rate

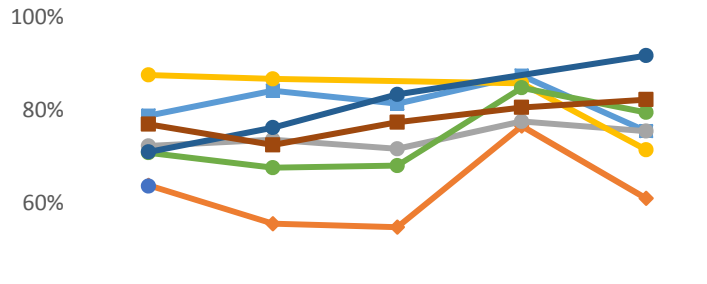
Course Success Rate - SOC



Course Success Rate - Ventura College

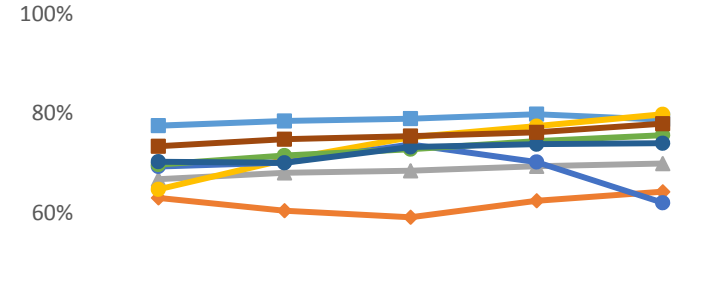


Course Success Rate by Ethnicity - SOC*



	2010	2011	2012	2013	2014
Asian	78.8%	84.1%	81.4%	87.4%	75.5%
Black	63.8%	55.6%	54.8%	76.5%	61.0%
Hispanic	72.3%	73.6%	71.6%	77.5%	75.4%
Native Amer	87.5%	86.7%		85.7%	71.4%
Pac Island	63.6%				
Two or More	70.8%	67.6%	68.0%	84.7%	79.5%
Unknown	71.0%	76.2%	83.3%		91.7%
White	76.9%	72.5%	77.3%	80.5%	82.2%

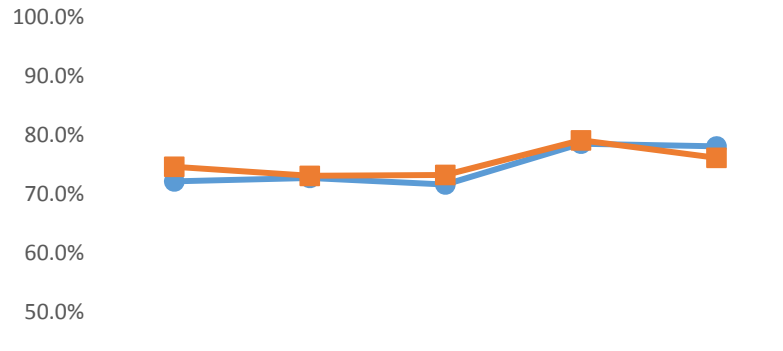
Course Success Rate by Ethnicity - Ventura College



	2010	2011	2012	2013	2014
Asian	77.6%	78.5%	79.0%	79.9%	78.8%
Black	63.1%	60.5%	59.2%	62.5%	64.3%
Hispanic	66.8%	68.1%	68.5%	69.4%	70.0%
Native Amer	64.8%	70.7%	75.2%	77.5%	79.8%
Pac Island	69.4%	70.2%	73.8%	70.3%	62.1%
Two or More	69.8%	71.6%	72.8%	74.5%	75.7%
Unknown	70.3%	70.1%	73.3%	73.8%	74.0%
White	73.4%	74.8%	75.5%	76.2%	78.0%

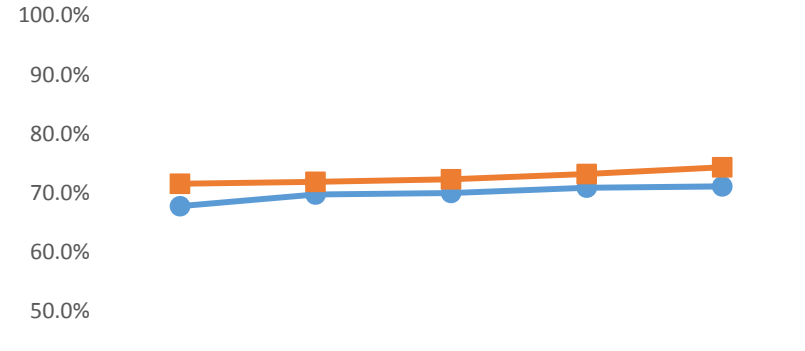
*Ethnicity data only displayed for cells with 10 or more students

Course Success Rate by Gender - SOC



	2010	2011	2012	2013	2014
Male	72.1%	72.7%	71.6%	78.5%	78.1%
Female	74.6%	73.1%	73.2%	79.1%	76.1%

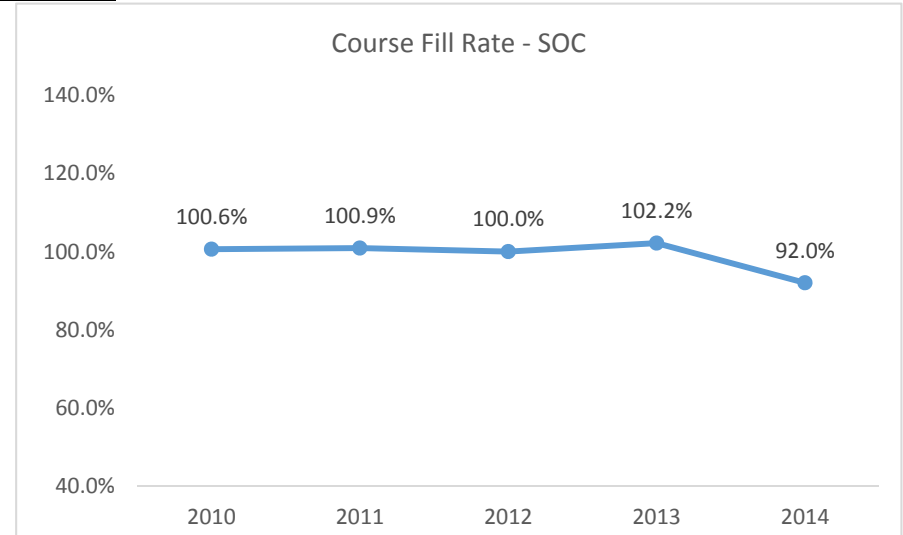
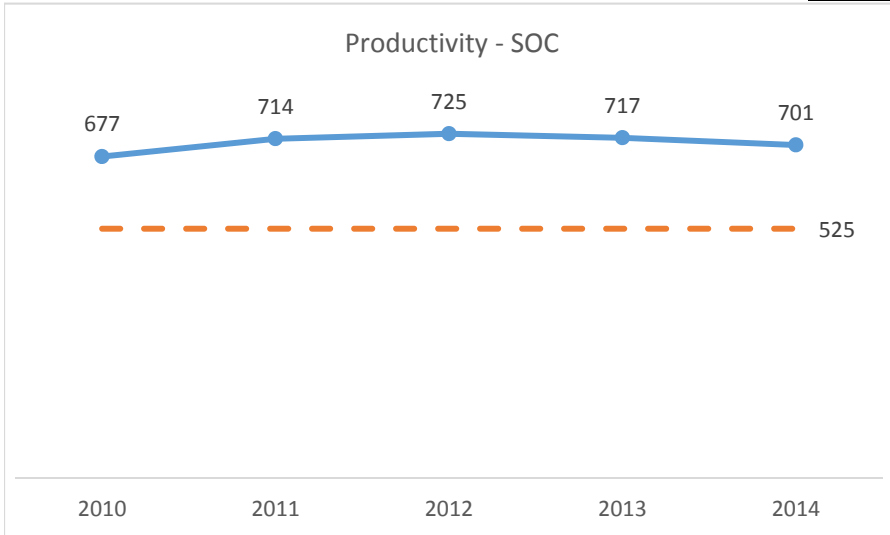
Course Success Rate by Gender - Ventura College



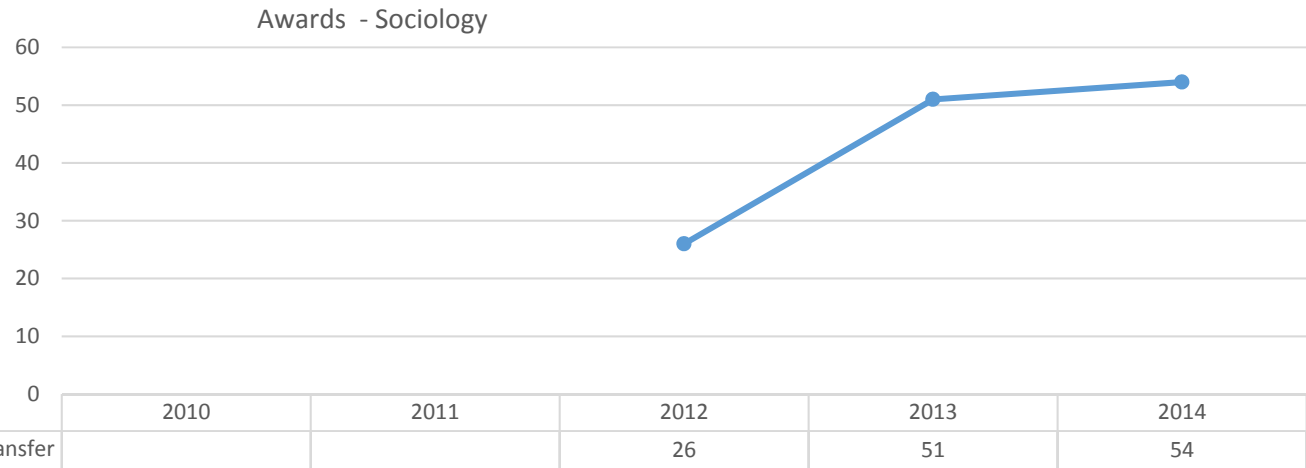
	2010	2011	2012	2013	2014
Male	67.8%	69.8%	70.0%	70.9%	71.1%
Female	71.6%	71.9%	72.3%	73.2%	74.3%

SOC

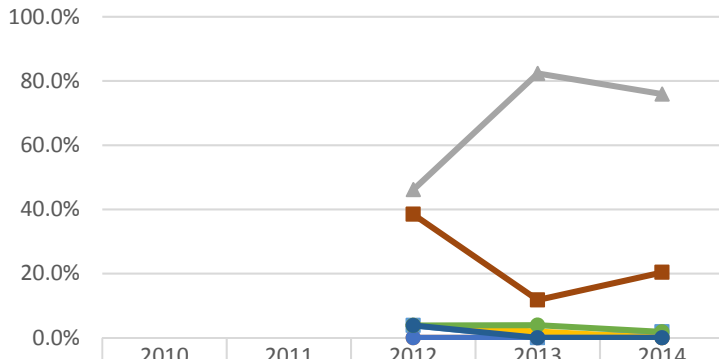
Section C - Productivity



Section D - Degrees and Certificates Awarded

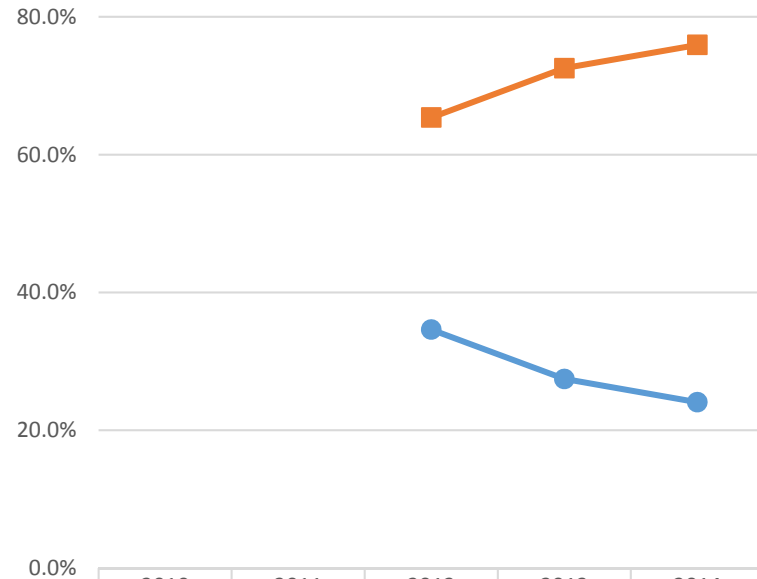


Awards by Ethnicity - (Multiple Items)



	2010	2011	2012	2013	2014
Asian			3.8%	0.0%	1.9%
Black			0.0%	0.0%	0.0%
Hispanic			46.2%	82.4%	75.9%
Native Amer			3.8%	2.0%	0.0%
Pac Island			0.0%	0.0%	0.0%
Two or More			3.8%	3.9%	1.9%
Unknown			3.8%	0.0%	0.0%
White			38.5%	11.8%	20.4%

Awards by Gender - (Multiple Items)



	2010	2011	2012	2013	2014
Male			34.6%	27.5%	24.1%
Female			65.4%	72.5%	75.9%