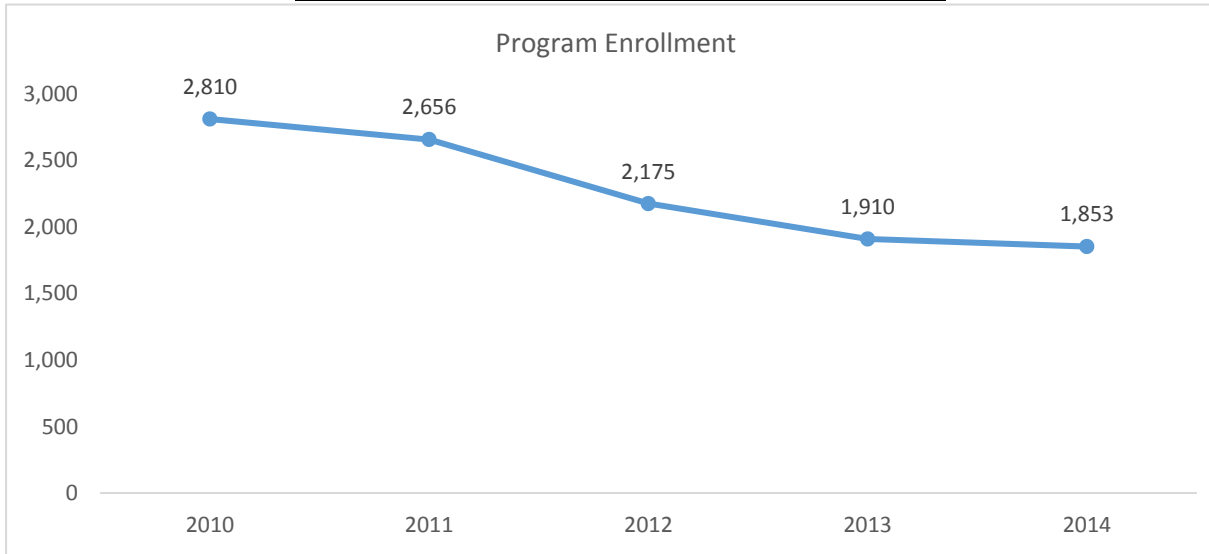


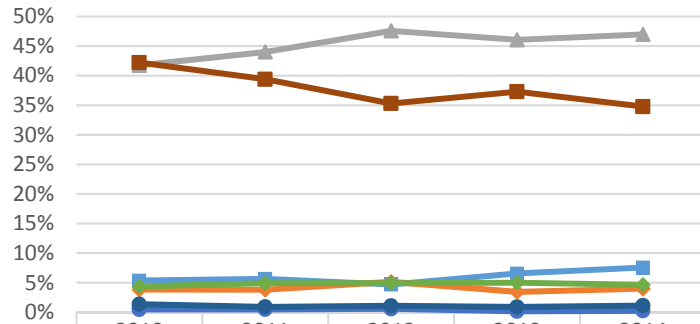
2015-2016 Program Review Datasheet

Music

Section A - Enrollment and Student Demographics

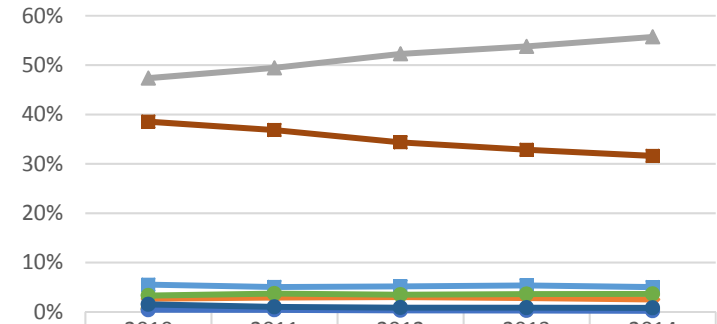


Student Ethnicity - Music

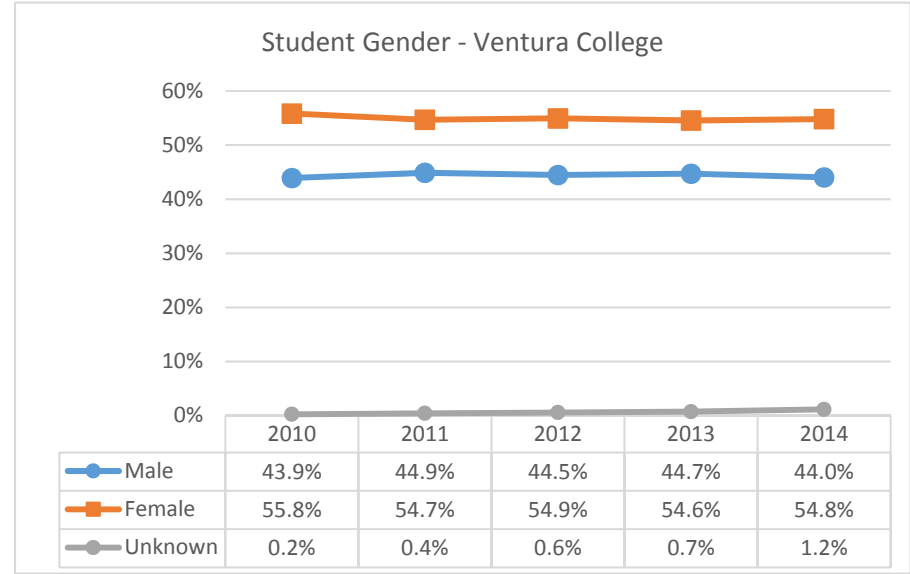
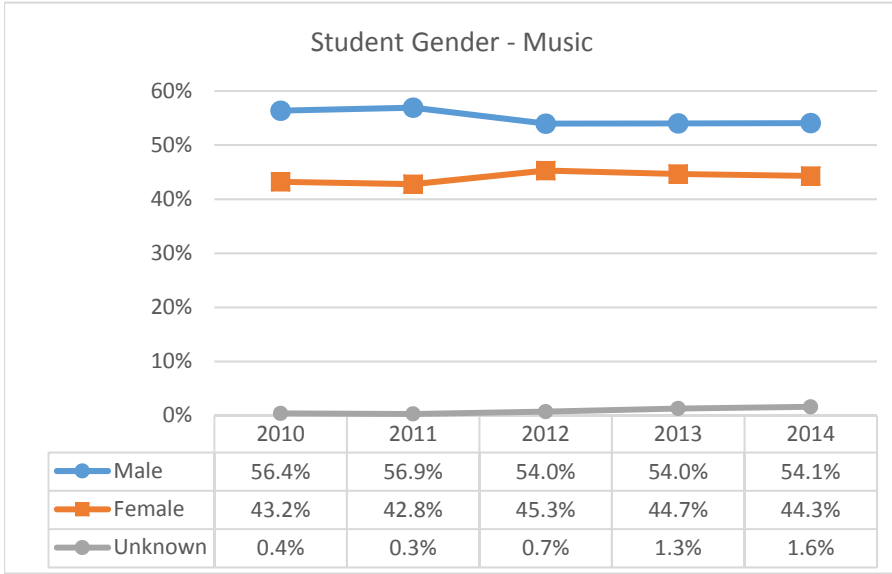


Ethnicity	2010	2011	2012	2013	2014
Asian	5.4%	5.7%	4.7%	6.6%	7.6%
Black	3.8%	3.8%	5.1%	3.4%	4.0%
Hispanic	41.7%	44.0%	47.6%	46.1%	47.0%
Native Amer	0.6%	0.8%	0.7%	0.6%	0.7%
Pac Island	0.5%	0.5%	0.6%	0.2%	0.2%
Two or More	4.4%	4.9%	4.9%	5.0%	4.6%
Unknown	1.4%	0.9%	1.1%	0.9%	1.1%
White	42.2%	39.4%	35.3%	37.3%	34.8%

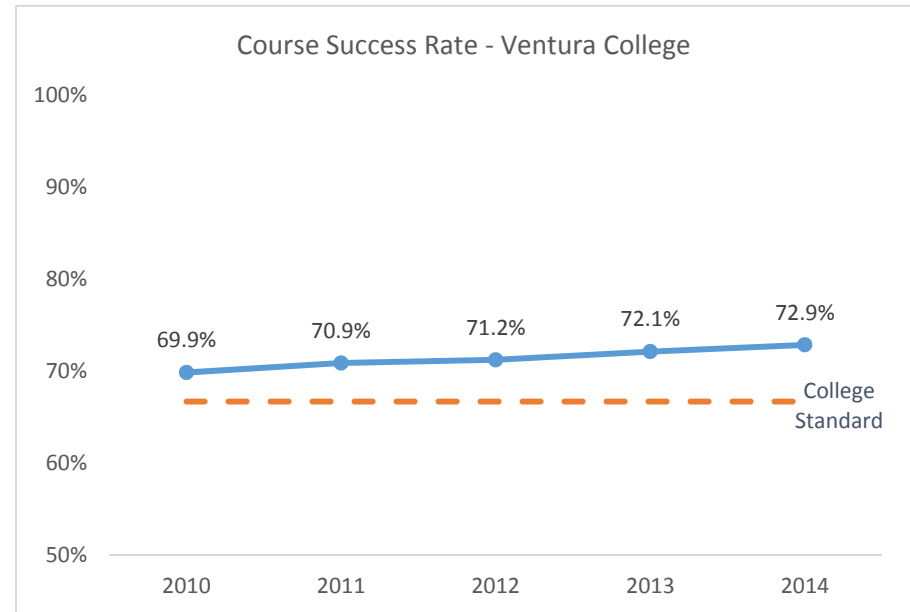
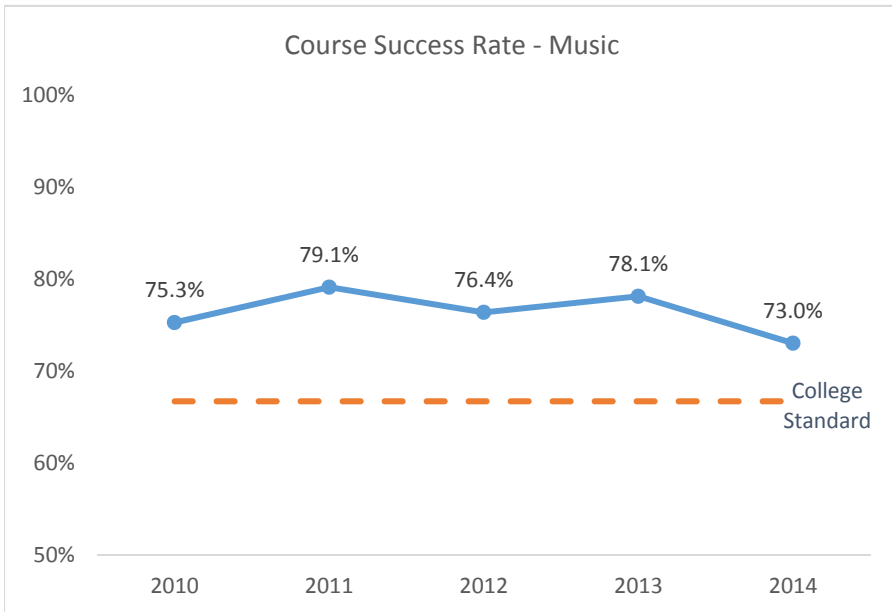
Student Ethnicity - Ventura College



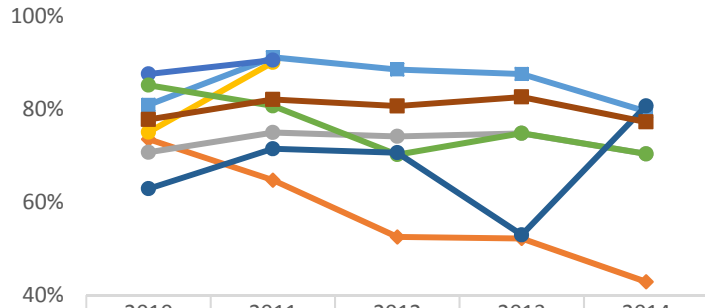
Ethnicity	2010	2011	2012	2013	2014
Asian	5.5%	5.1%	5.2%	5.4%	5.0%
Black	2.7%	2.9%	3.0%	2.8%	2.5%
Hispanic	47.4%	49.4%	52.3%	53.8%	55.7%
Native Amer	0.6%	0.6%	0.5%	0.4%	0.4%
Pac Island	0.4%	0.4%	0.3%	0.3%	0.2%
Two or More	3.3%	3.7%	3.5%	3.6%	3.6%
Unknown	1.5%	1.0%	0.9%	0.9%	0.8%
White	38.5%	36.8%	34.4%	32.8%	31.6%



Section B - Course Success Rate

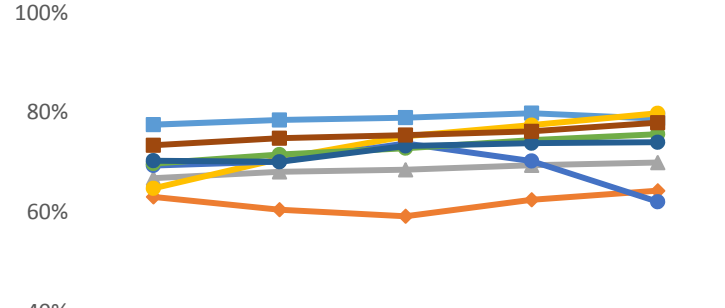


Course Success Rate by Ethnicity - Music*



	2010	2011	2012	2013	2014
Asian	80.9%	91.1%	88.5%	87.5%	79.5%
Black	73.5%	64.7%	52.5%	52.2%	42.9%
Hispanic	70.7%	74.9%	74.1%	74.8%	70.3%
Native Amer	75.0%	90.0%			
Pac Island	87.5%	90.5%			
Two or More	85.1%	80.6%	70.2%	74.8%	70.3%
Unknown	62.9%	71.4%	70.6%	52.9%	80.6%
White	77.7%	82.0%	80.6%	82.5%	77.2%

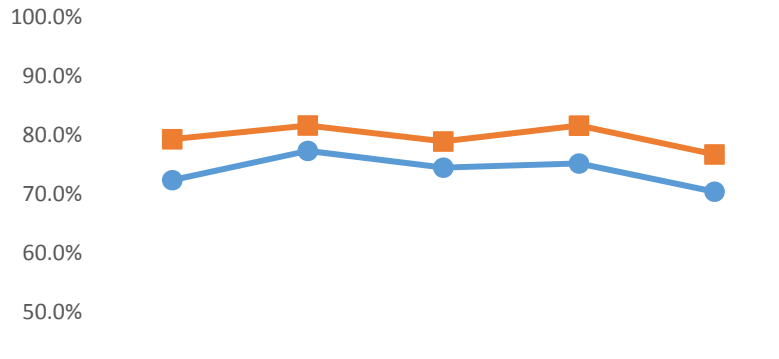
Course Success Rate by Ethnicity - Ventura College



	2010	2011	2012	2013	2014
Asian	77.6%	78.5%	79.0%	79.9%	78.8%
Black	63.1%	60.5%	59.2%	62.5%	64.3%
Hispanic	66.8%	68.1%	68.5%	69.4%	70.0%
Native Amer	64.8%	70.7%	75.2%	77.5%	79.8%
Pac Island	69.4%	70.2%	73.8%	70.3%	62.1%
Two or More	69.8%	71.6%	72.8%	74.5%	75.7%
Unknown	70.3%	70.1%	73.3%	73.8%	74.0%
White	73.4%	74.8%	75.5%	76.2%	78.0%

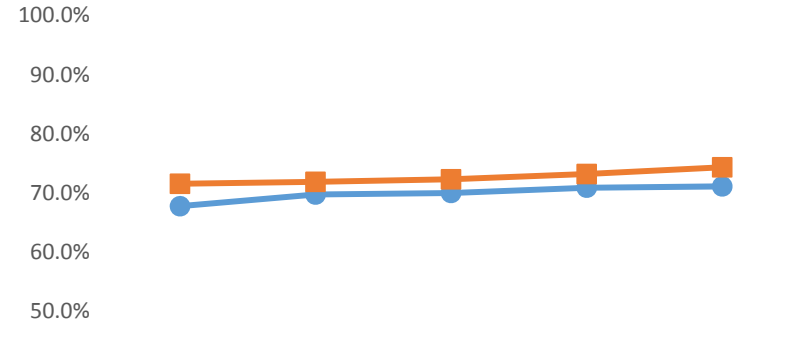
*Ethnicity data only displayed for cells with 10 or more students

Course Success Rate by Gender - Music



	2010	2011	2012	2013	2014
Male	72.4%	77.3%	74.5%	75.2%	70.4%
Female	79.3%	81.6%	78.9%	81.6%	76.7%

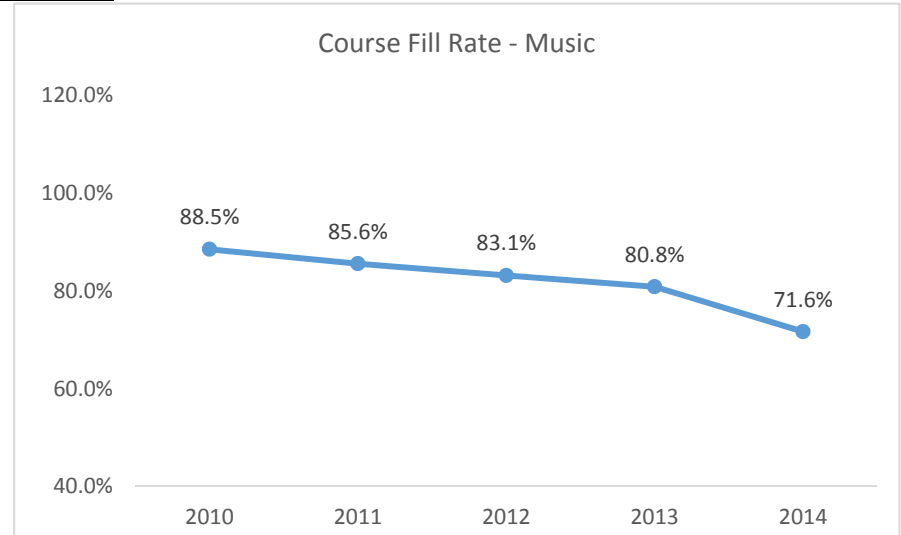
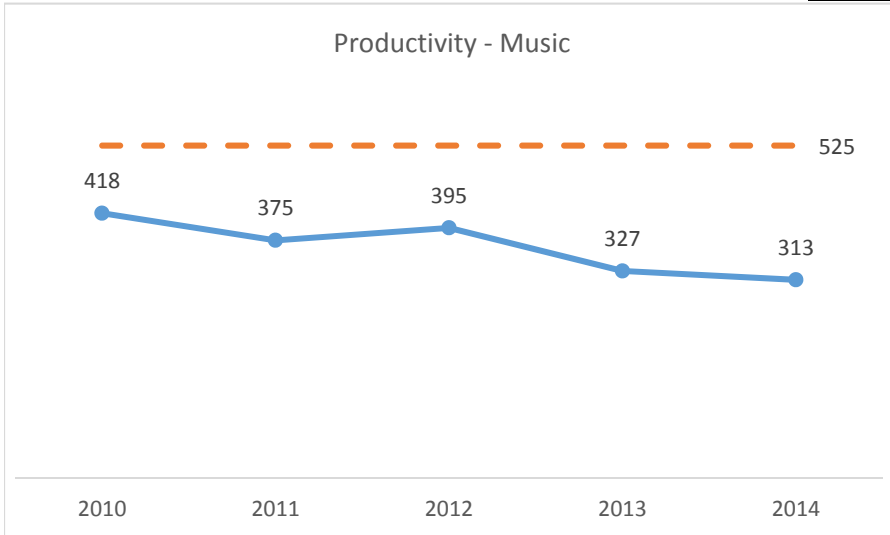
Course Success Rate by Gender - Ventura College



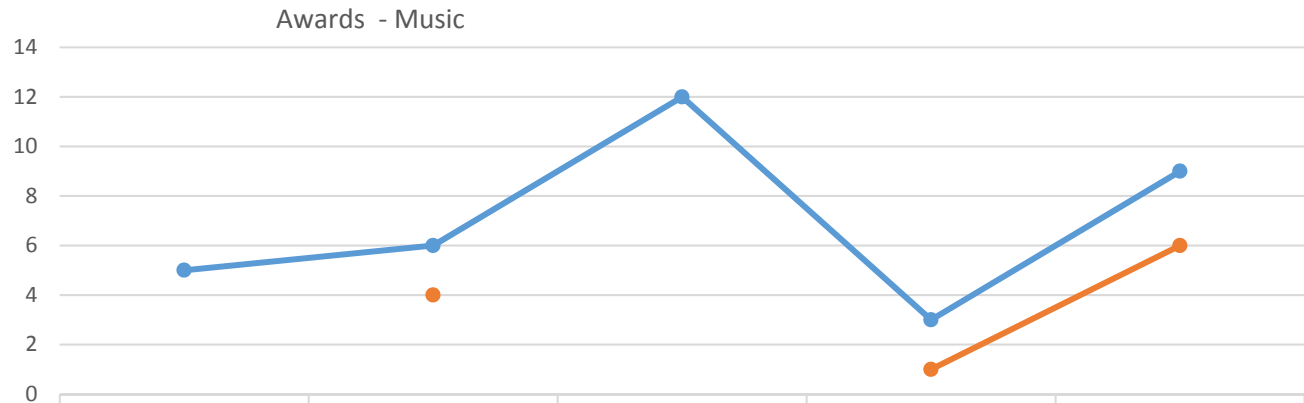
	2010	2011	2012	2013	2014
Male	67.8%	69.8%	70.0%	70.9%	71.1%
Female	71.6%	71.9%	72.3%	73.2%	74.3%

Music

Section C - Productivity

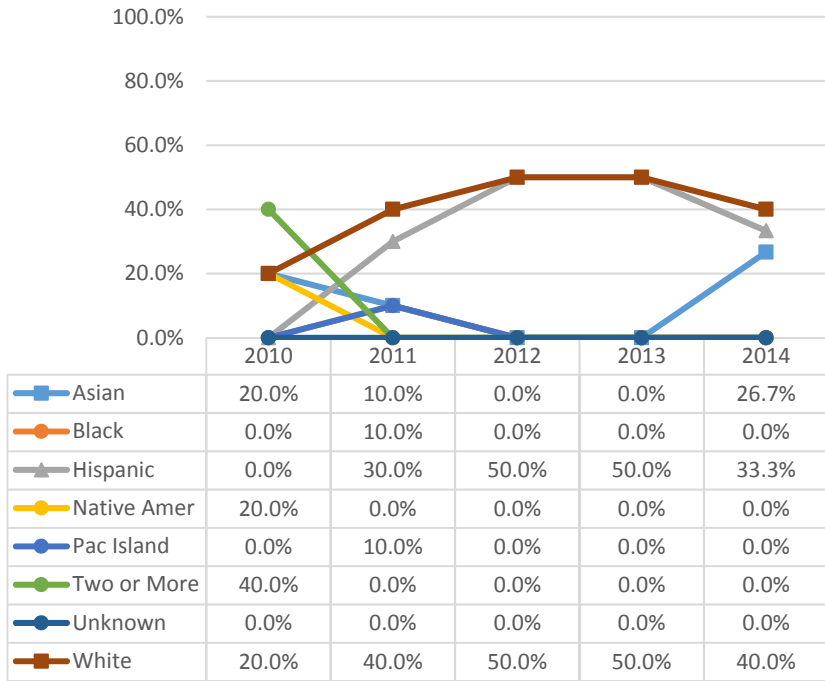


Section D - Degrees and Certificates Awarded



	2010	2011	2012	2013	2014
Music Associate in Arts	5	6	12	3	9
Music Certificate/30 - 59.5 units		4		1	6

Awards by Ethnicity - Music



Awards by Gender - Music

