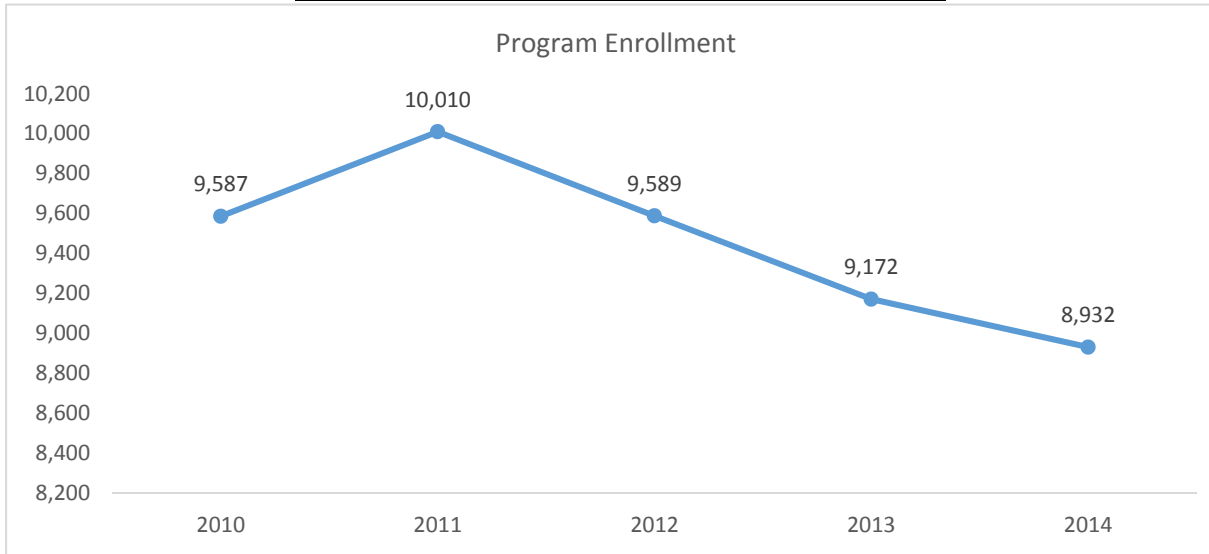
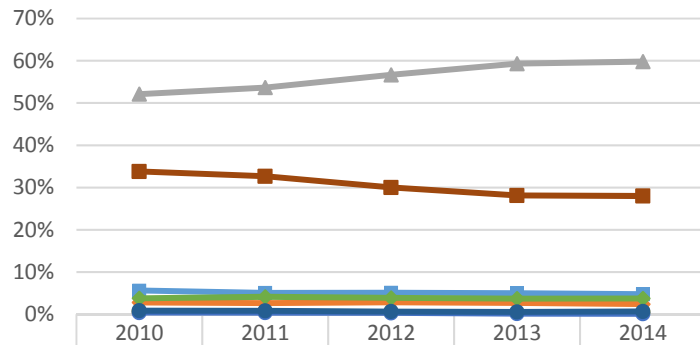


# 2015-2016 Program Review Datasheet Mathematics

## Section A - Enrollment and Student Demographics

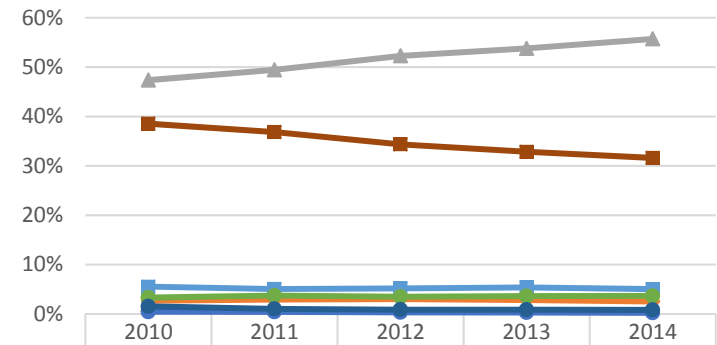


### Student Ethnicity - Mathematics



Ethnicity	2010	2011	2012	2013	2014
Asian	5.6%	5.1%	5.1%	5.0%	4.7%
Black	2.8%	2.6%	2.8%	2.7%	2.4%
Hispanic	52.1%	53.7%	56.7%	59.3%	59.8%
Native Amer	0.6%	0.6%	0.5%	0.4%	0.5%
Pac Island	0.4%	0.4%	0.3%	0.2%	0.1%
Two or More	3.8%	4.1%	3.9%	3.7%	3.8%
Unknown	0.8%	0.8%	0.6%	0.6%	0.7%
White	33.8%	32.7%	30.0%	28.1%	28.0%

### Student Ethnicity - Ventura College

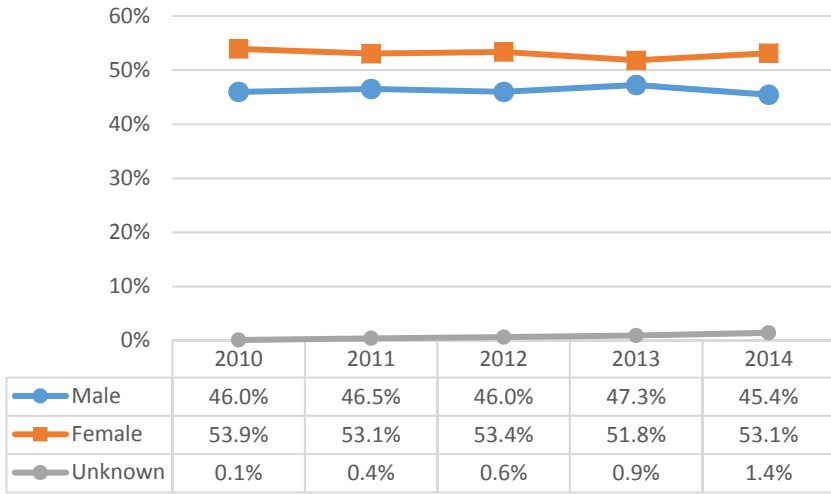


Ethnicity	2010	2011	2012	2013	2014
Asian	5.5%	5.1%	5.2%	5.4%	5.0%
Black	2.7%	2.9%	3.0%	2.8%	2.5%
Hispanic	47.4%	49.4%	52.3%	53.8%	55.7%
Native Amer	0.6%	0.6%	0.5%	0.4%	0.4%
Pac Island	0.4%	0.4%	0.3%	0.3%	0.2%
Two or More	3.3%	3.7%	3.5%	3.6%	3.6%
Unknown	1.5%	1.0%	0.9%	0.9%	0.8%
White	38.5%	36.8%	34.4%	32.8%	31.6%

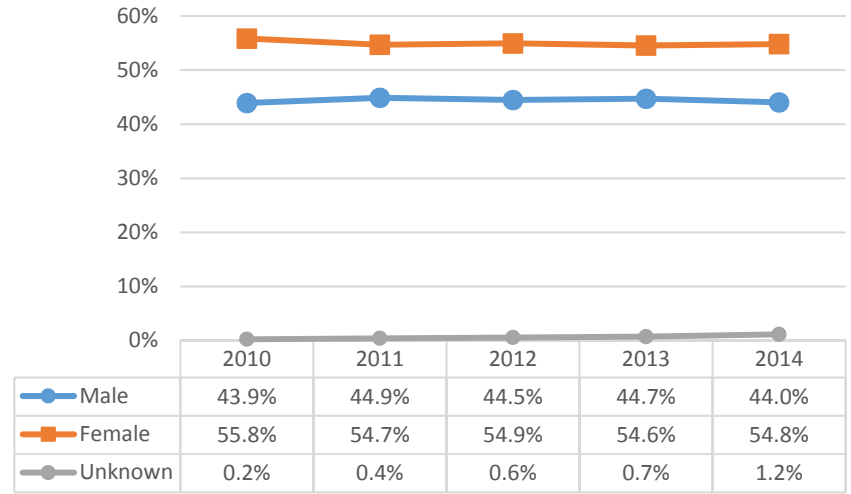


## 2015-2016 Program Review Datasheet Mathematics

Student Gender - Mathematics

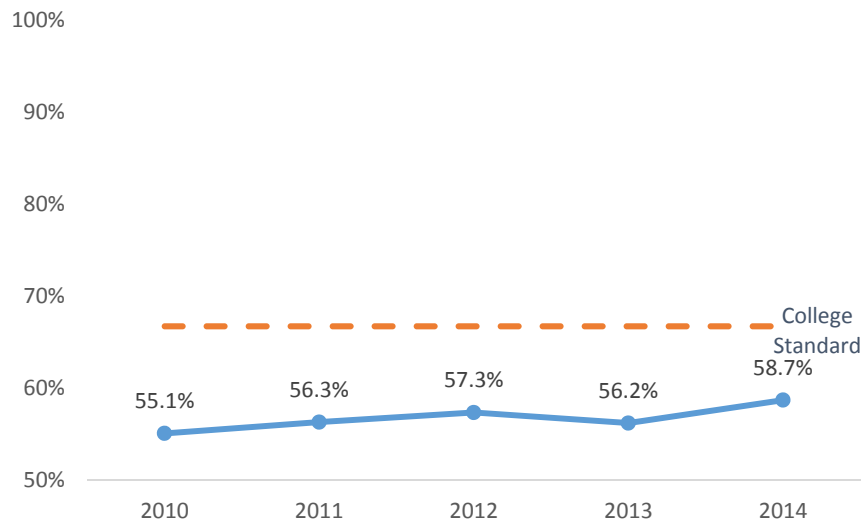


Student Gender - Ventura College

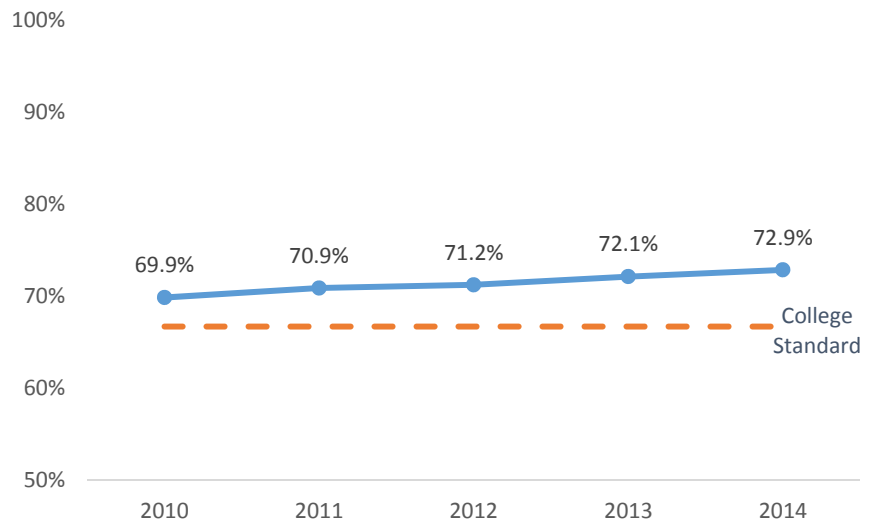


### Section B - Course Success Rate

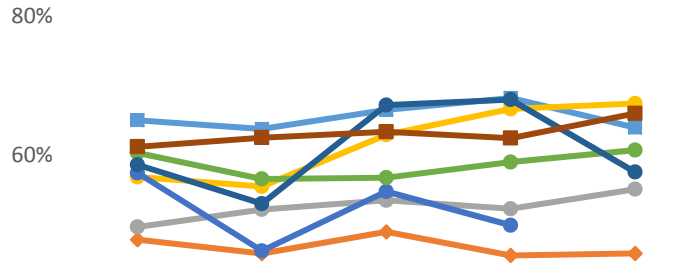
Course Success Rate - Mathematics



Course Success Rate - Ventura College

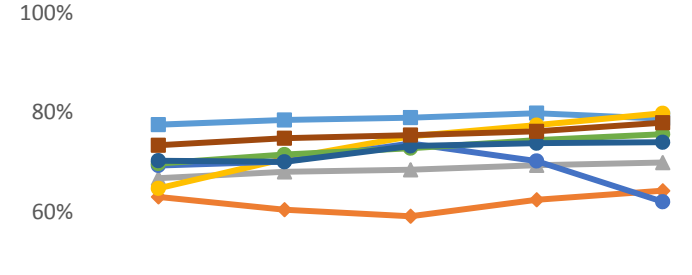


Course Success Rate by Ethnicity - Mathematics\*



	2010	2011	2012	2013	2014
Asian	65.0%	63.8%	66.5%	68.2%	64.0%
Black	47.9%	45.9%	49.1%	45.7%	46.0%
Hispanic	49.8%	52.3%	53.6%	52.4%	55.2%
Native Amer	56.9%	55.6%	63.0%	66.7%	67.4%
Pac Island	57.5%	46.3%	54.8%	50.0%	
Two or More	60.4%	56.6%	56.8%	59.1%	60.8%
Unknown	58.7%	53.1%	67.2%	68.0%	57.6%
White	61.2%	62.5%	63.4%	62.5%	66.0%

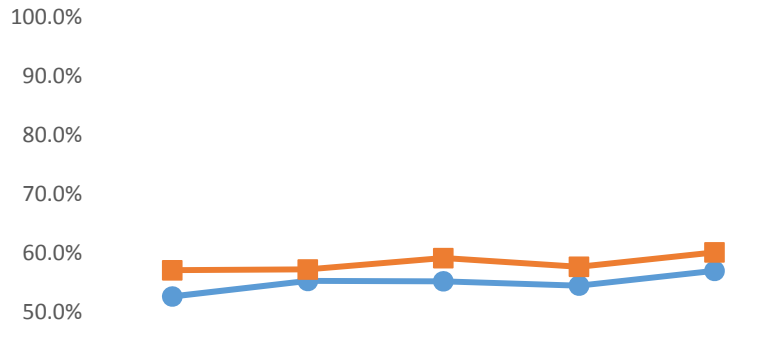
Course Success Rate by Ethnicity - Ventura College



	2010	2011	2012	2013	2014
Asian	77.6%	78.5%	79.0%	79.9%	78.8%
Black	63.1%	60.5%	59.2%	62.5%	64.3%
Hispanic	66.8%	68.1%	68.5%	69.4%	70.0%
Native Amer	64.8%	70.7%	75.2%	77.5%	79.8%
Pac Island	69.4%	70.2%	73.8%	70.3%	62.1%
Two or More	69.8%	71.6%	72.8%	74.5%	75.7%
Unknown	70.3%	70.1%	73.3%	73.8%	74.0%
White	73.4%	74.8%	75.5%	76.2%	78.0%

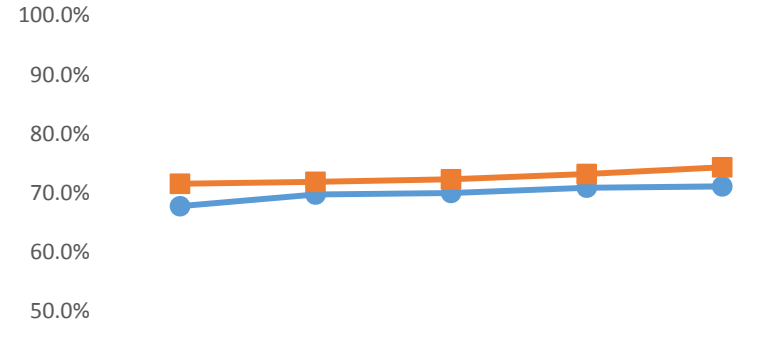
\*Ethnicity data only displayed for cells with 10 or more students

Course Success Rate by Gender - Mathematics



	2010	2011	2012	2013	2014
Male	52.7%	55.3%	55.2%	54.5%	57.0%
Female	57.1%	57.3%	59.2%	57.7%	60.1%

Course Success Rate by Gender - Ventura College

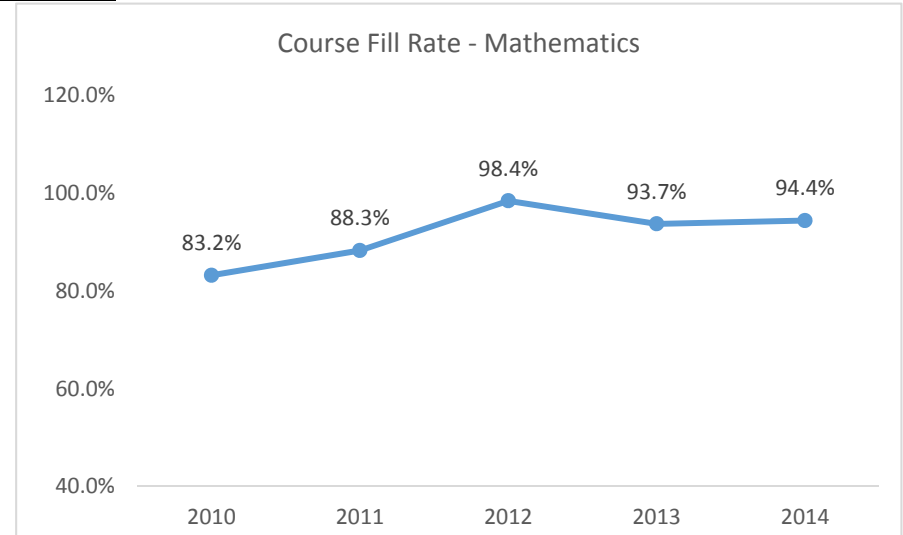
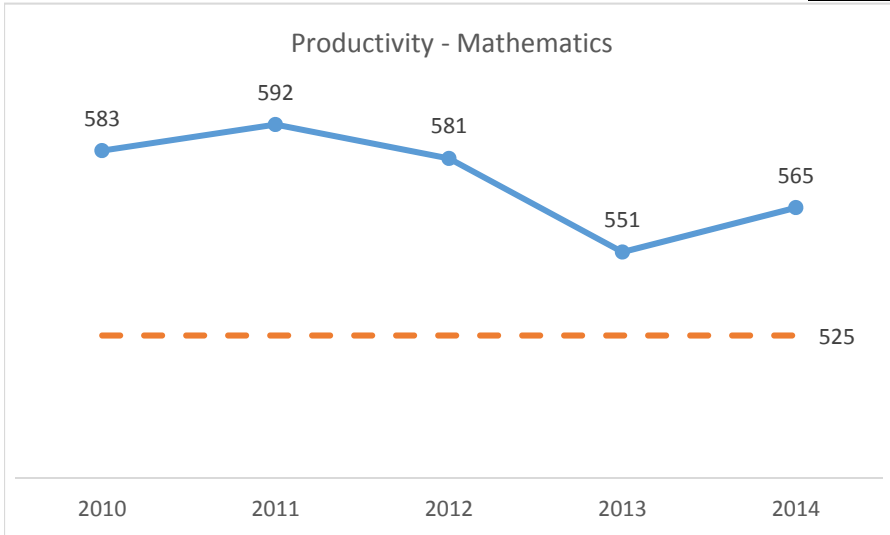


	2010	2011	2012	2013	2014
Male	67.8%	69.8%	70.0%	70.9%	71.1%
Female	71.6%	71.9%	72.3%	73.2%	74.3%

# 2015-2016 Program Review Datasheet

## Mathematics

### Section C - Productivity



### Section D - Degrees and Certificates Awarded

#### Awards - Mathematics

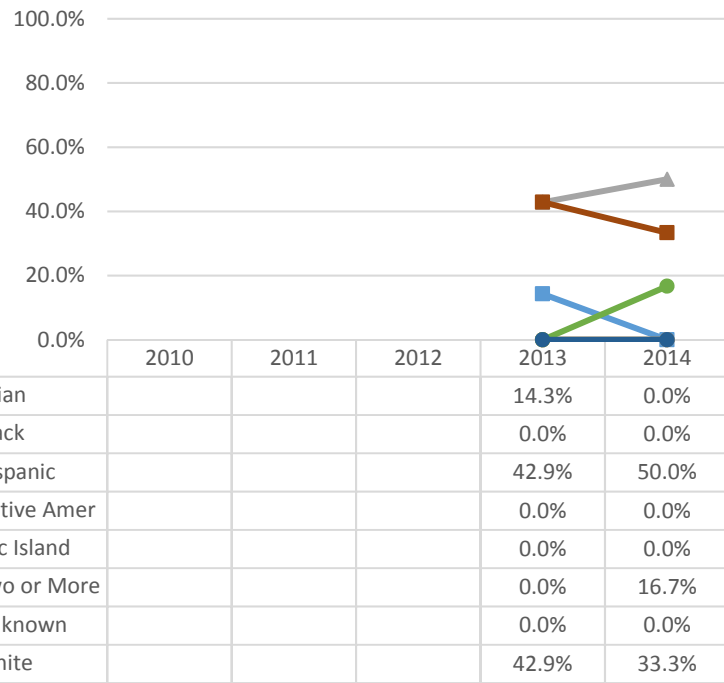


—●— Mathematics CSU Transfer Assoc in Science for Transfer

2010	2011	2012	2013	2014
			7	6

## 2015-2016 Program Review Datasheet Mathematics

### Awards by Ethnicity - Mathematics



### Awards by Gender - Mathematics

