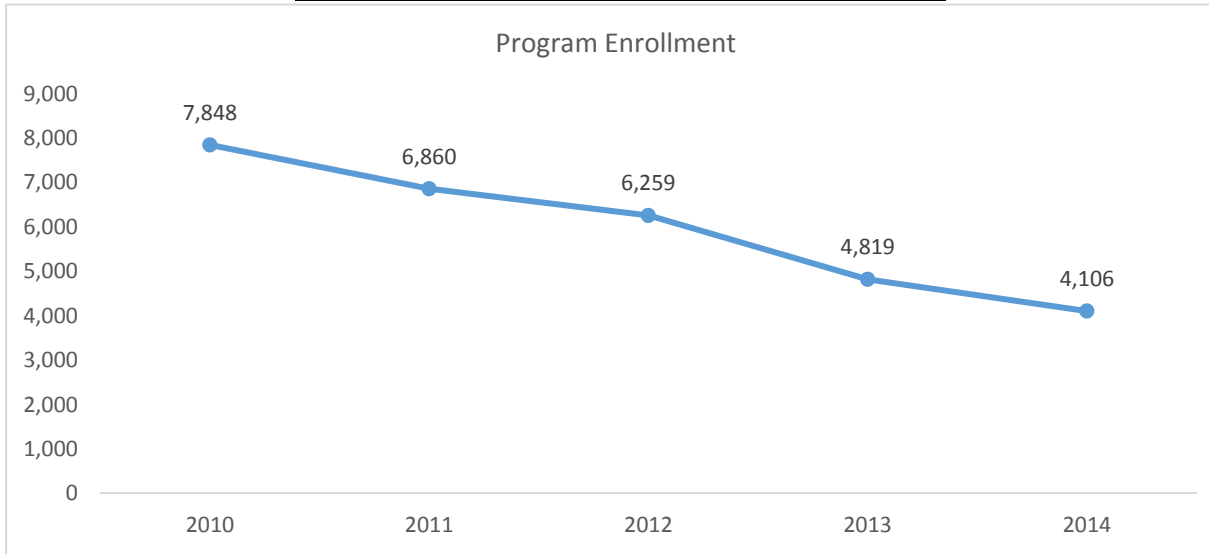


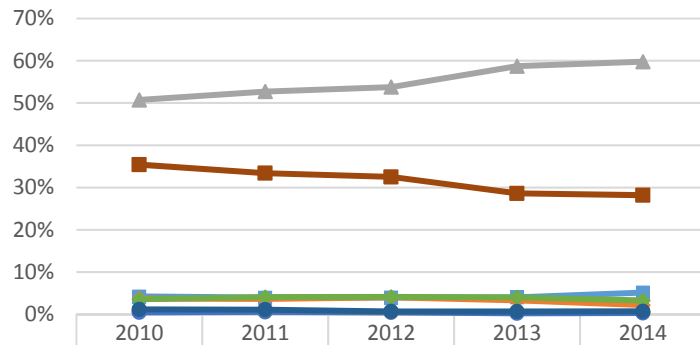
# 2015-2016 Program Review Datasheet

## Kinesiology

### Section A - Enrollment and Student Demographics

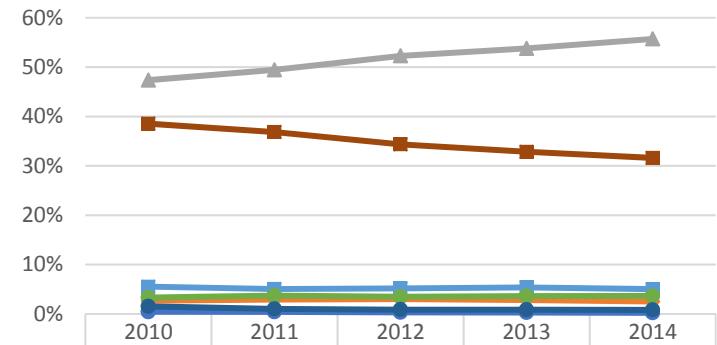


#### Student Ethnicity - Kinesiology



Ethnicity	2010	2011	2012	2013	2014
Asian	4.2%	3.9%	4.0%	4.0%	5.1%
Black	3.7%	3.6%	4.0%	3.3%	2.2%
Hispanic	50.7%	52.7%	53.8%	58.7%	59.8%
Native Amer	0.7%	0.6%	0.5%	0.4%	0.5%
Pac Island	0.5%	0.6%	0.5%	0.2%	0.3%
Two or More	3.5%	4.1%	4.1%	4.0%	3.3%
Unknown	1.2%	1.1%	0.7%	0.6%	0.7%
White	35.4%	33.4%	32.5%	28.6%	28.2%

#### Student Ethnicity - Ventura College

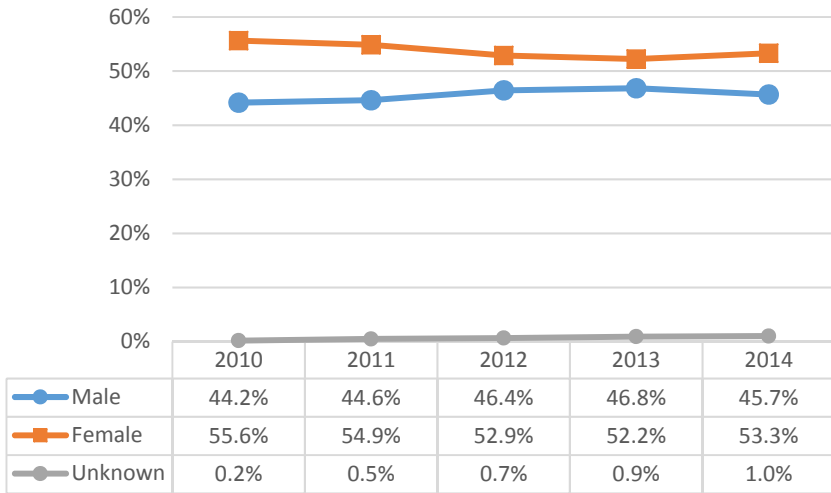


Ethnicity	2010	2011	2012	2013	2014
Asian	5.5%	5.1%	5.2%	5.4%	5.0%
Black	2.7%	2.9%	3.0%	2.8%	2.5%
Hispanic	47.4%	49.4%	52.3%	53.8%	55.7%
Native Amer	0.6%	0.6%	0.5%	0.4%	0.4%
Pac Island	0.4%	0.4%	0.3%	0.3%	0.2%
Two or More	3.3%	3.7%	3.5%	3.6%	3.6%
Unknown	1.5%	1.0%	0.9%	0.9%	0.8%
White	38.5%	36.8%	34.4%	32.8%	31.6%

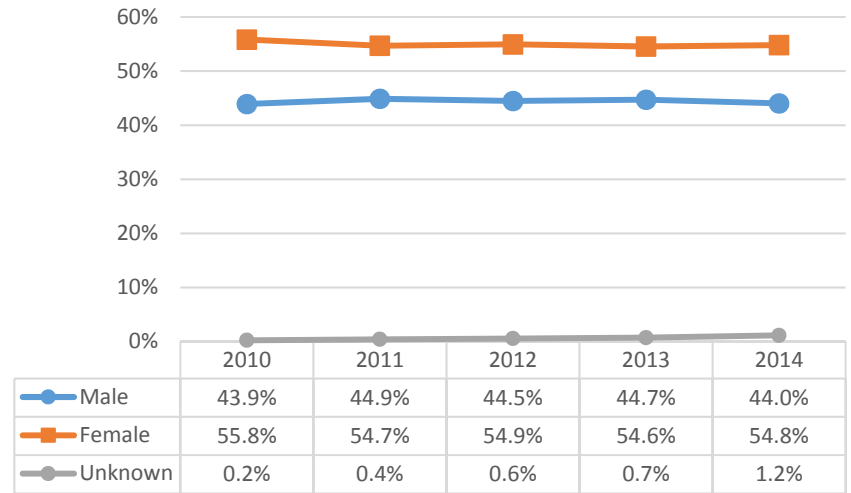


## 2015-2016 Program Review Datasheet Kinesiology

Student Gender - Kinesiology

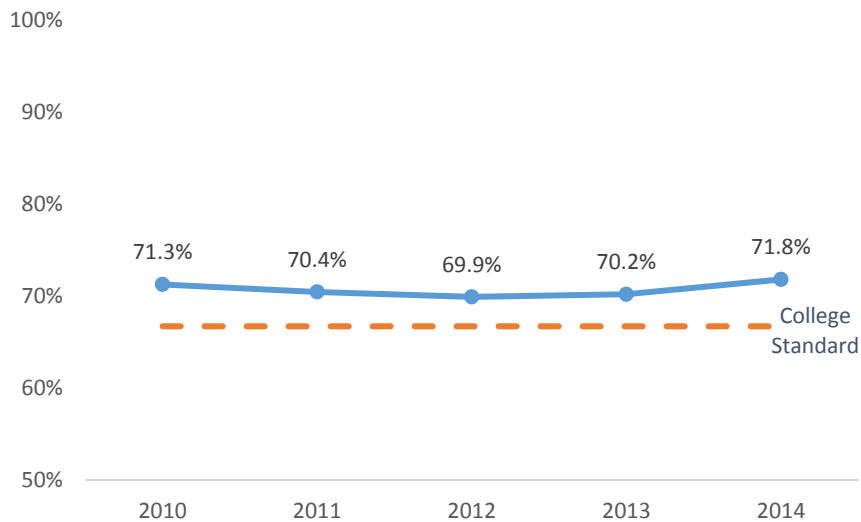


Student Gender - Ventura College

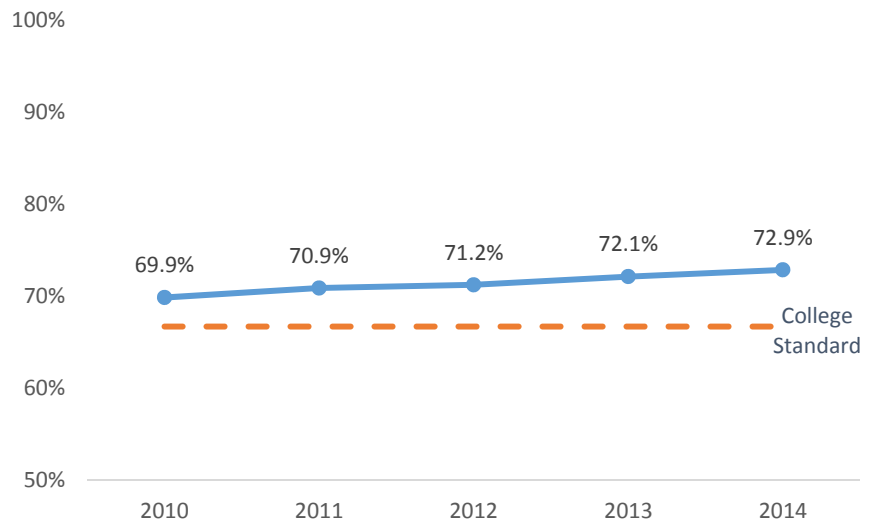


### Section B - Course Success Rate

Course Success Rate - Kinesiology

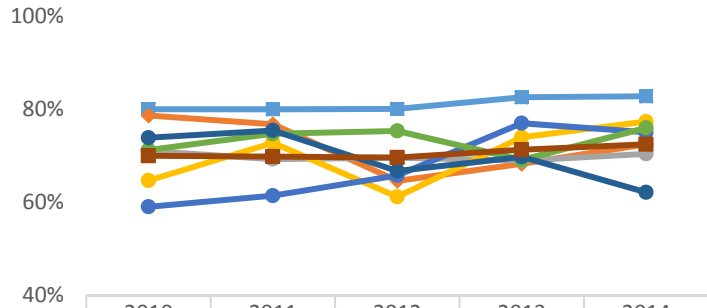


Course Success Rate - Ventura College



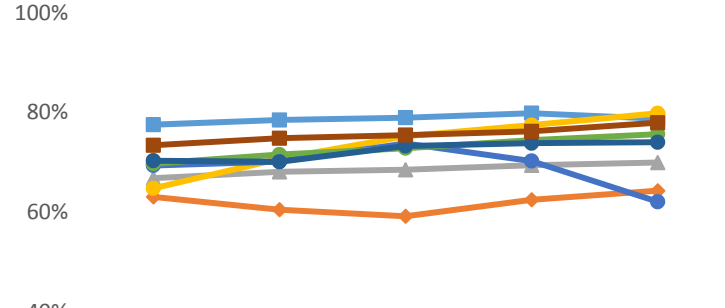
## 2015-2016 Program Review Datasheet Kinesiology

Course Success Rate by Ethnicity - Kinesiology\*



	2010	2011	2012	2013	2014
Asian	79.9%	79.9%	80.0%	82.5%	82.7%
Black	78.6%	76.7%	64.5%	68.2%	72.4%
Hispanic	70.9%	69.2%	69.5%	68.9%	70.4%
Native Amer	64.6%	72.7%	61.1%	73.9%	77.3%
Pac Island	59.0%	61.4%	65.7%	76.9%	75.0%
Two or More	71.2%	74.7%	75.3%	69.0%	75.9%
Unknown	73.8%	75.4%	66.7%	69.7%	62.1%
White	69.9%	69.7%	69.6%	71.2%	72.4%

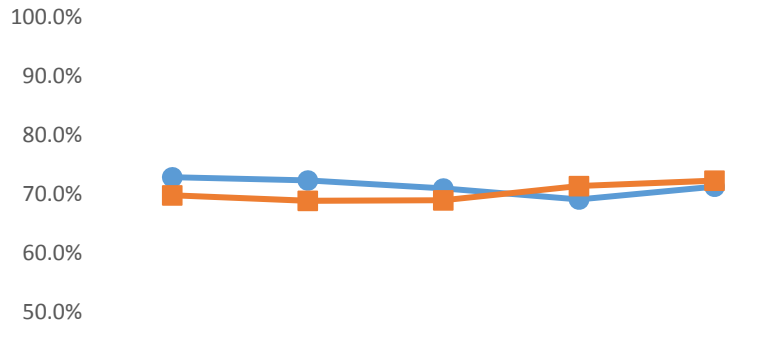
Course Success Rate by Ethnicity - Ventura College



	2010	2011	2012	2013	2014
Asian	77.6%	78.5%	79.0%	79.9%	78.8%
Black	63.1%	60.5%	59.2%	62.5%	64.3%
Hispanic	66.8%	68.1%	68.5%	69.4%	70.0%
Native Amer	64.8%	70.7%	75.2%	77.5%	79.8%
Pac Island	69.4%	70.2%	73.8%	70.3%	62.1%
Two or More	69.8%	71.6%	72.8%	74.5%	75.7%
Unknown	70.3%	70.1%	73.3%	73.8%	74.0%
White	73.4%	74.8%	75.5%	76.2%	78.0%

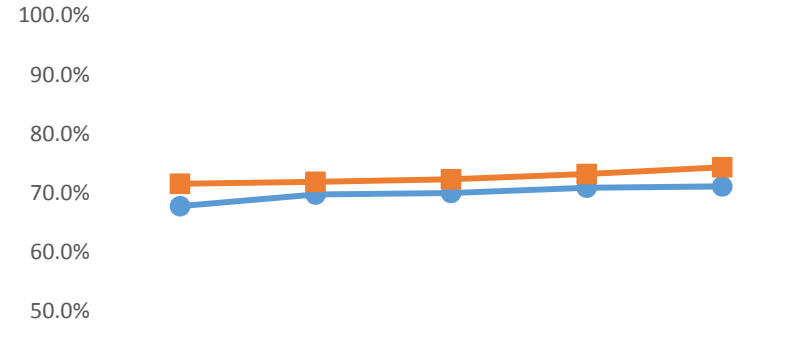
\*Ethnicity data only displayed for cells with 10 or more students

Course Success Rate by Gender - Kinesiology



	2010	2011	2012	2013	2014
Male	72.8%	72.3%	70.9%	69.1%	71.2%
Female	69.8%	68.9%	68.9%	71.4%	72.3%

Course Success Rate by Gender - Ventura College



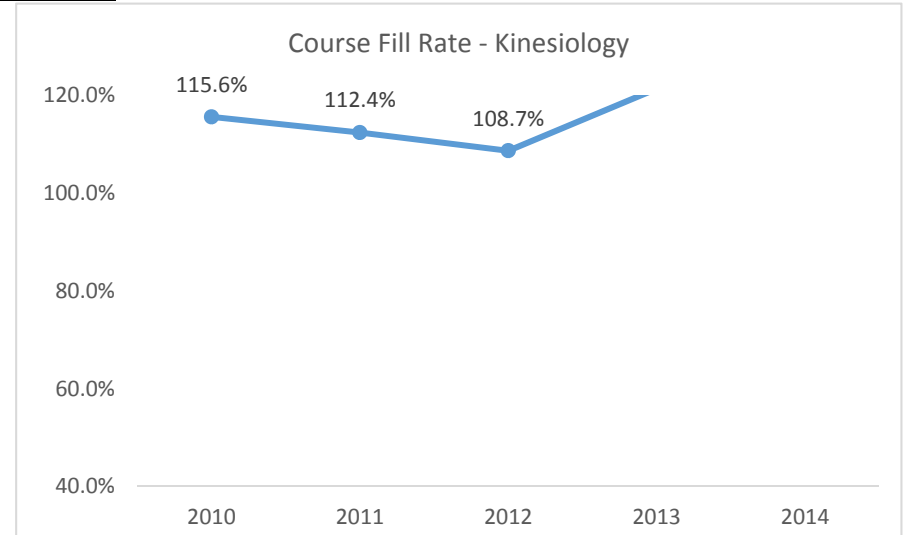
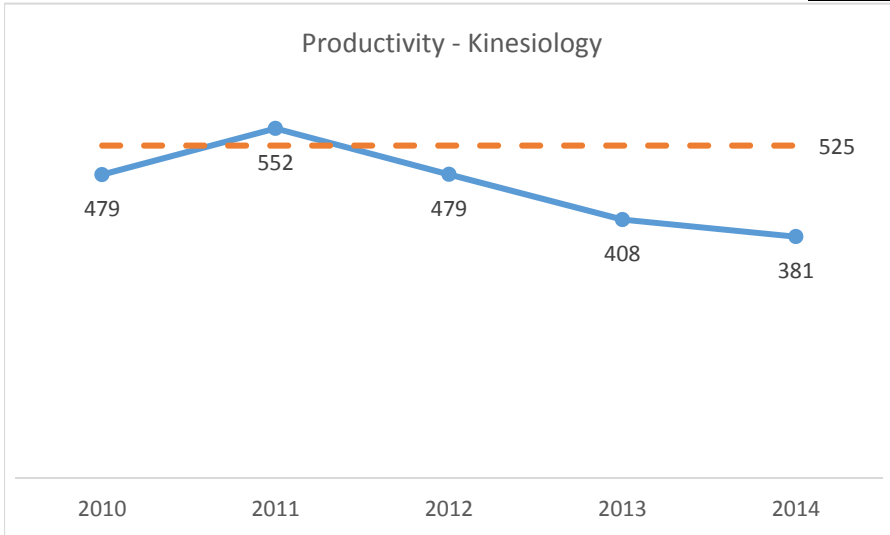
	2010	2011	2012	2013	2014
Male	67.8%	69.8%	70.0%	70.9%	71.1%
Female	71.6%	71.9%	72.3%	73.2%	74.3%



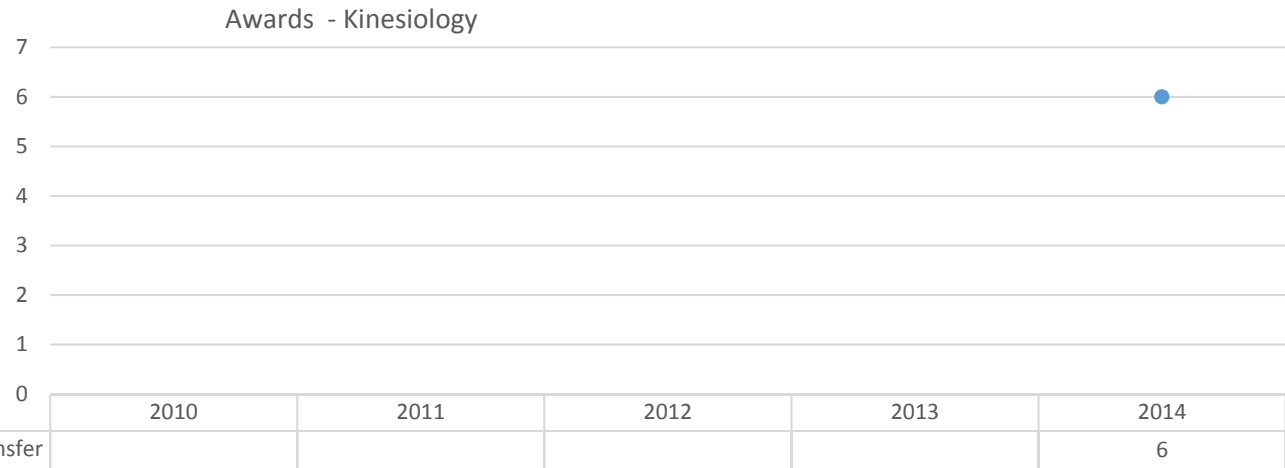
# 2015-2016 Program Review Datasheet

## Kinesiology

### Section C - Productivity



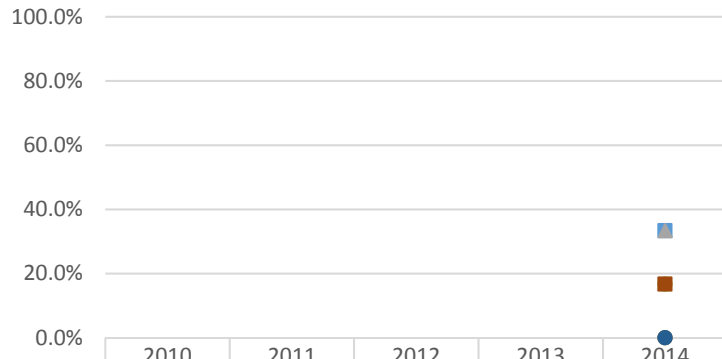
### Section D - Degrees and Certificates Awarded



● Kinesiology CSU Transfer Associate in Arts for Transfer

## 2015-2016 Program Review Datasheet Kinesiology

### Awards by Ethnicity - Kinesiology



	2010	2011	2012	2013	2014
Asian					33.3%
Black					0.0%
Hispanic					33.3%
Native Amer					0.0%
Pac Island					0.0%
Two or More					16.7%
Unknown					0.0%
White					16.7%

### Awards by Gender - Kinesiology



	2010	2011	2012	2013	2014
Male					66.7%
Female					33.3%