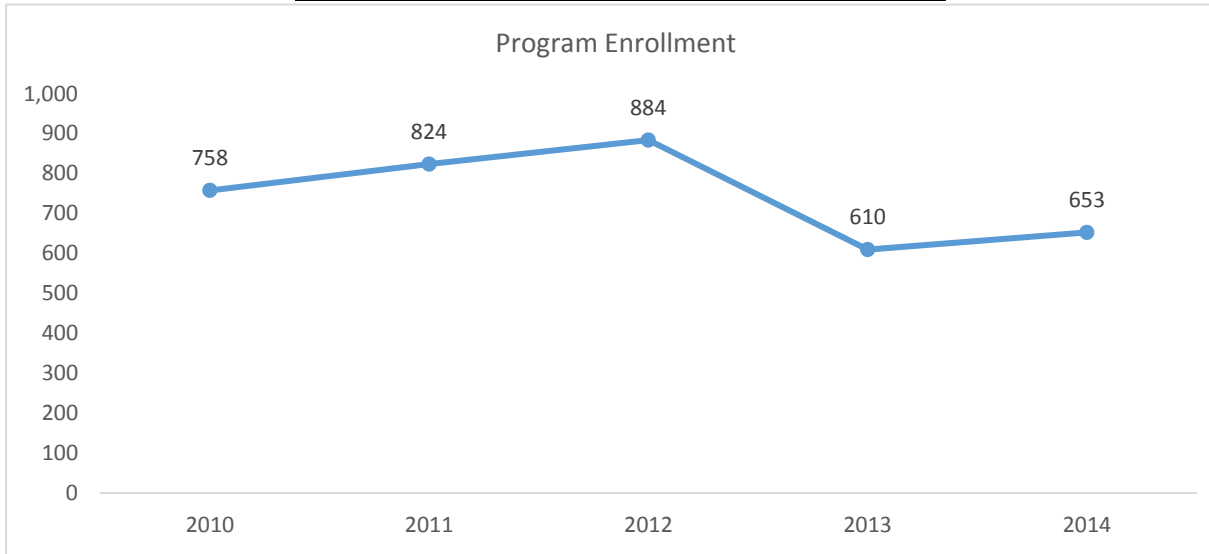


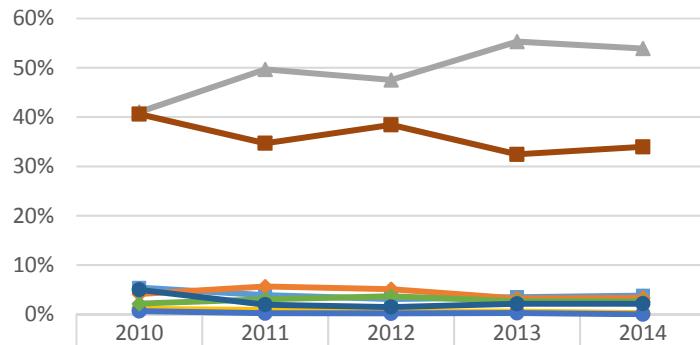
# 2015-2016 Program Review Datasheet

## EAC

### Section A - Enrollment and Student Demographics

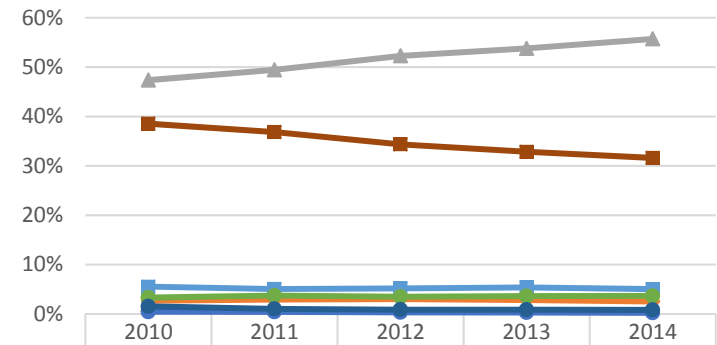


#### Student Ethnicity - EAC



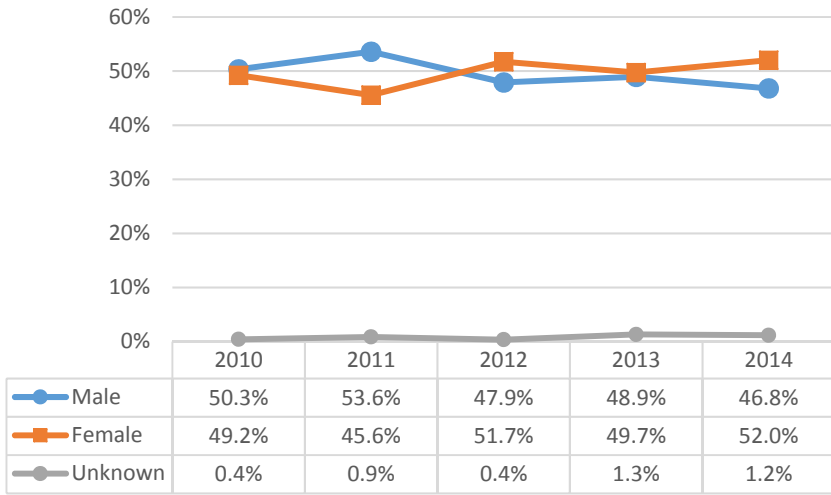
	2010	2011	2012	2013	2014
Asian	5.4%	3.9%	3.1%	3.5%	3.8%
Black	4.1%	5.6%	5.1%	3.2%	3.3%
Hispanic	41.0%	49.7%	47.5%	55.3%	53.9%
Native Amer	1.1%	0.9%	0.5%	0.5%	0.2%
Pac Island	0.6%	0.2%	0.2%	0.3%	0.0%
Two or More	2.2%	3.0%	3.6%	2.7%	2.6%
Unknown	5.0%	2.0%	1.5%	2.1%	2.1%
White	40.6%	34.7%	38.4%	32.4%	34.0%

#### Student Ethnicity - Ventura College

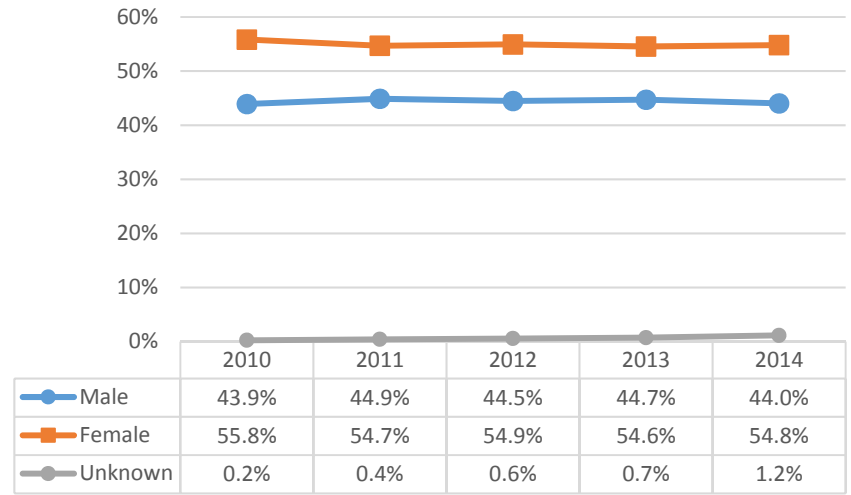


	2010	2011	2012	2013	2014
Asian	5.5%	5.1%	5.2%	5.4%	5.0%
Black	2.7%	2.9%	3.0%	2.8%	2.5%
Hispanic	47.4%	49.4%	52.3%	53.8%	55.7%
Native Amer	0.6%	0.6%	0.5%	0.4%	0.4%
Pac Island	0.4%	0.4%	0.3%	0.3%	0.2%
Two or More	3.3%	3.7%	3.5%	3.6%	3.6%
Unknown	1.5%	1.0%	0.9%	0.9%	0.8%
White	38.5%	36.8%	34.4%	32.8%	31.6%

### Student Gender - EAC

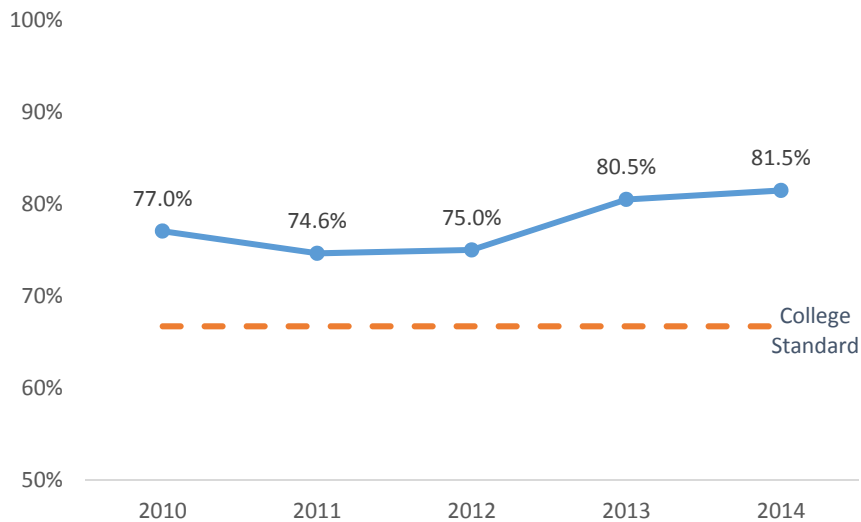


### Student Gender - Ventura College

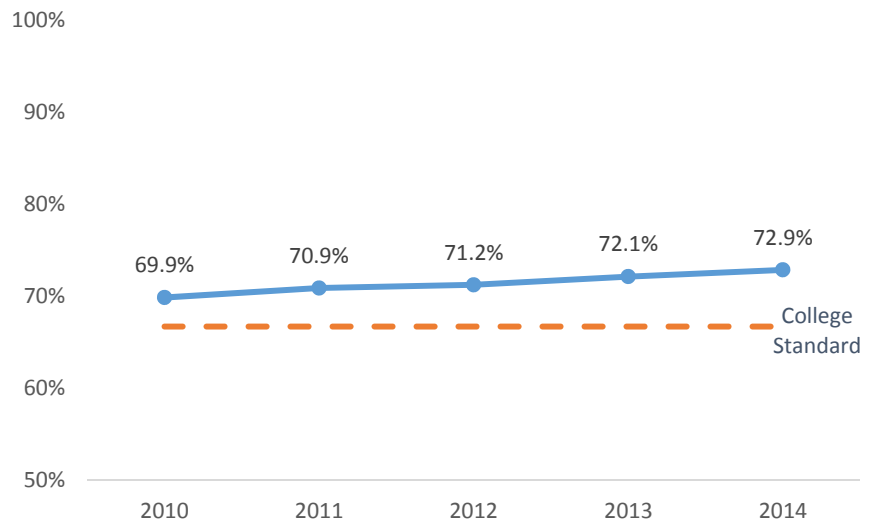


### Section B - Course Success Rate

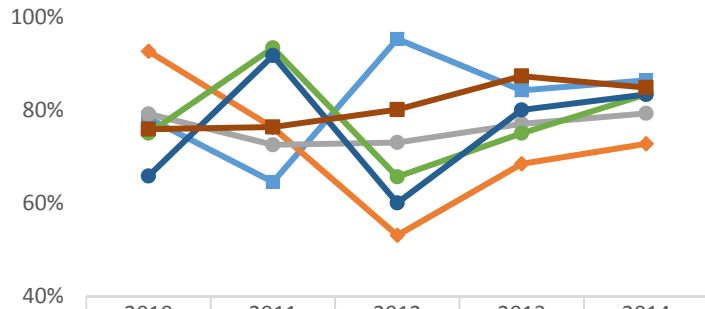
### Course Success Rate - EAC



### Course Success Rate - Ventura College

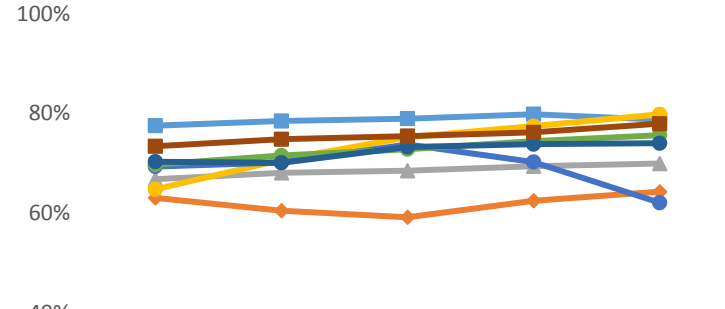


### Course Success Rate by Ethnicity - EAC\*



	2010	2011	2012	2013	2014
Asian	78.3%	64.5%	95.2%	84.2%	86.4%
Black	92.6%	76.2%	53.1%	68.4%	72.7%
Hispanic	79.1%	72.5%	73.0%	77.0%	79.3%
Native Amer					
Pac Island					
Two or More	75.0%	93.3%	65.6%	75.0%	83.3%
Unknown	65.8%	91.7%	60.0%	80.0%	83.3%
White	75.9%	76.3%	80.1%	87.3%	84.8%

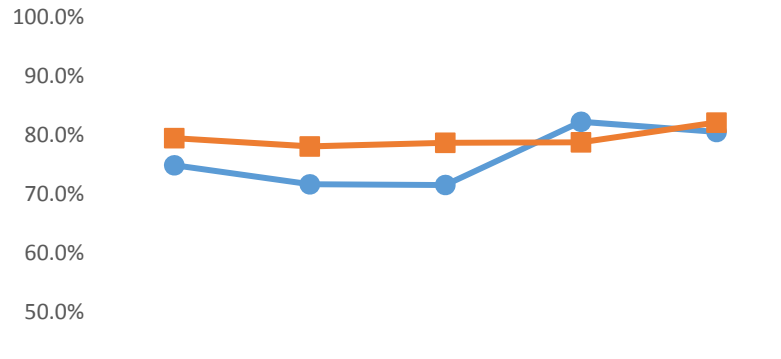
### Course Success Rate by Ethnicity - Ventura College



	2010	2011	2012	2013	2014
Asian	77.6%	78.5%	79.0%	79.9%	78.8%
Black	63.1%	60.5%	59.2%	62.5%	64.3%
Hispanic	66.8%	68.1%	68.5%	69.4%	70.0%
Native Amer	64.8%	70.7%	75.2%	77.5%	79.8%
Pac Island	69.4%	70.2%	73.8%	70.3%	62.1%
Two or More	69.8%	71.6%	72.8%	74.5%	75.7%
Unknown	70.3%	70.1%	73.3%	73.8%	74.0%
White	73.4%	74.8%	75.5%	76.2%	78.0%

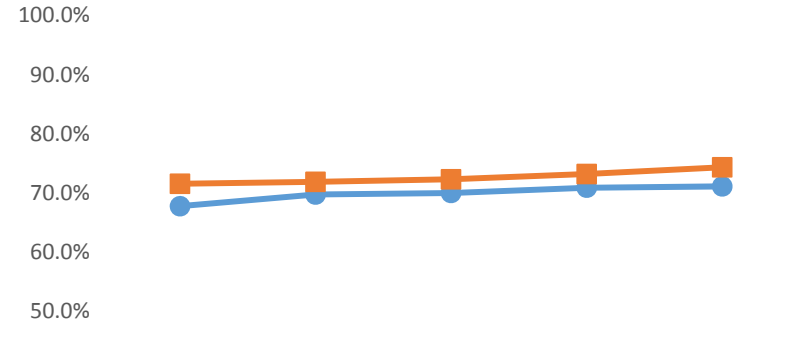
\*Ethnicity data only displayed for cells with 10 or more students

### Course Success Rate by Gender - EAC



	2010	2011	2012	2013	2014
Male	74.9%	71.6%	71.5%	82.2%	80.5%
Female	79.5%	78.1%	78.7%	78.7%	82.1%

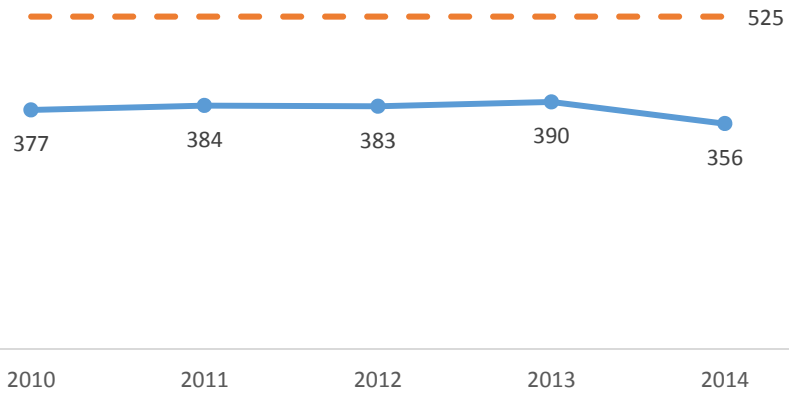
### Course Success Rate by Gender - Ventura College



	2010	2011	2012	2013	2014
Male	67.8%	69.8%	70.0%	70.9%	71.1%
Female	71.6%	71.9%	72.3%	73.2%	74.3%

Section C - Productivity

Productivity - EAC



Course Fill Rate - EAC

