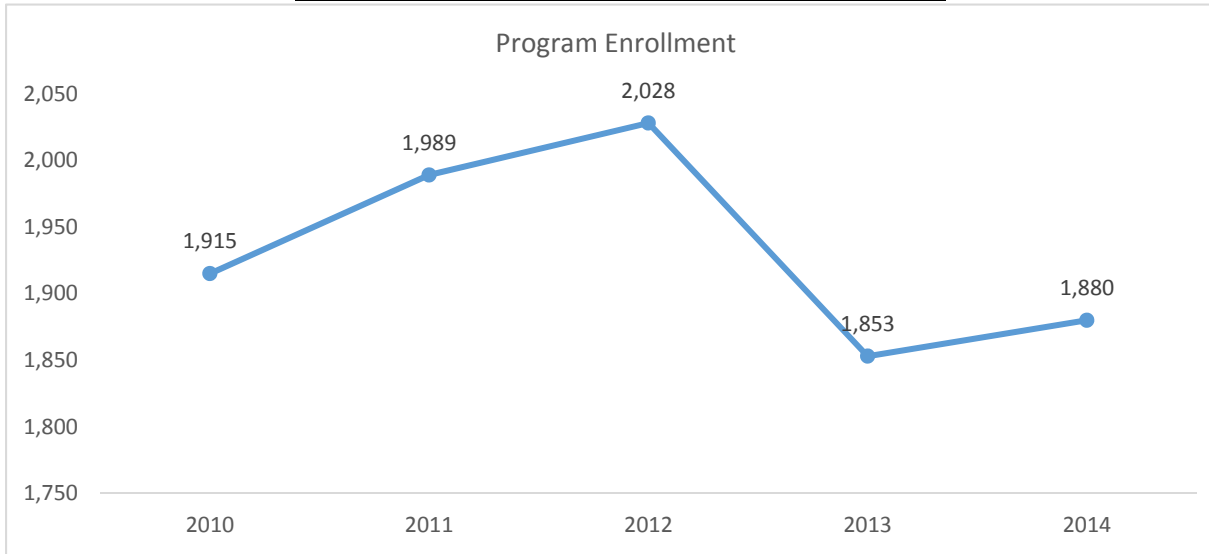


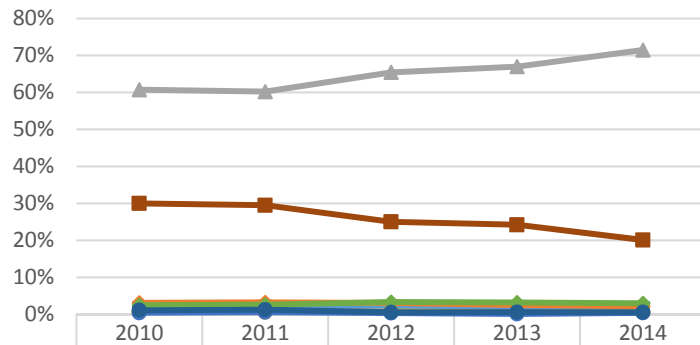
2015-2016 Program Review Datasheet

Criminal Justice

Section A - Enrollment and Student Demographics

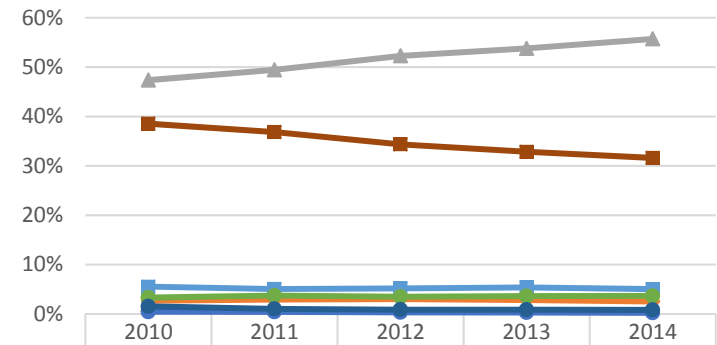


Student Ethnicity - Criminal Justice



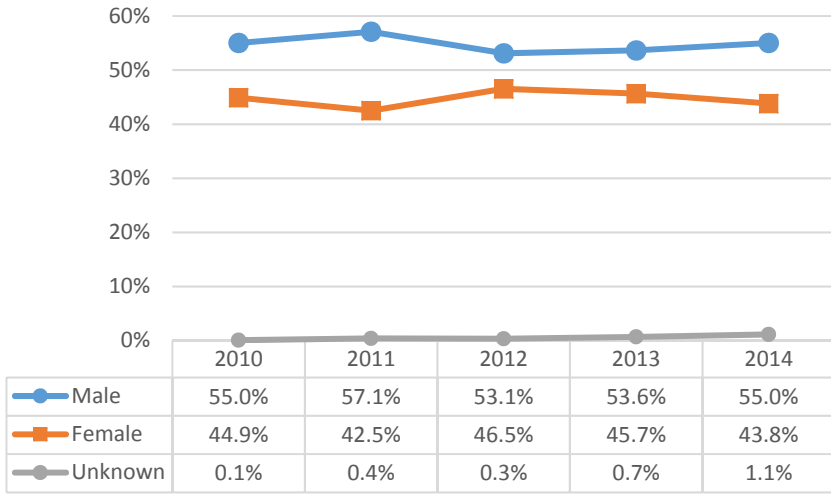
	2010	2011	2012	2013	2014
Asian	1.6%	2.1%	1.6%	1.9%	1.7%
Black	3.1%	3.2%	3.1%	2.5%	2.2%
Hispanic	60.7%	60.2%	65.4%	67.0%	71.5%
Native Amer	0.6%	0.6%	0.7%	0.5%	0.6%
Pac Island	0.4%	0.6%	0.3%	0.1%	0.4%
Two or More	2.4%	2.6%	3.3%	3.2%	3.0%
Unknown	1.1%	1.2%	0.5%	0.6%	0.6%
White	30.0%	29.5%	25.0%	24.2%	20.1%

Student Ethnicity - Ventura College

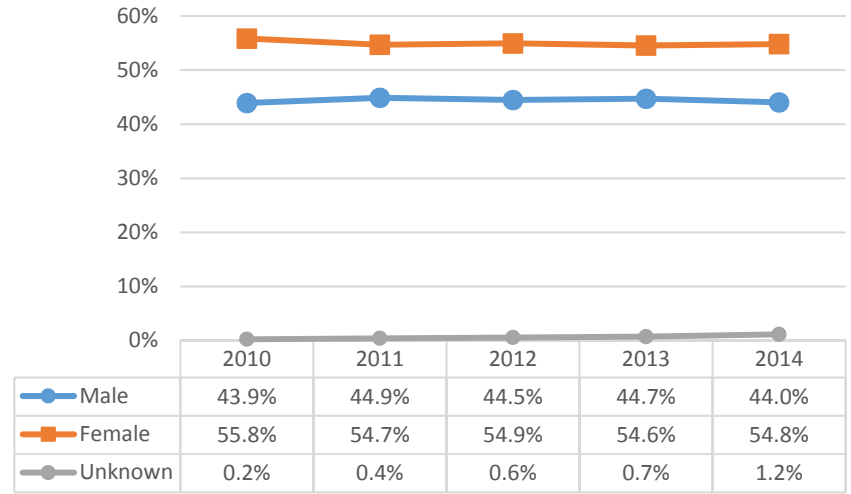


	2010	2011	2012	2013	2014
Asian	5.5%	5.1%	5.2%	5.4%	5.0%
Black	2.7%	2.9%	3.0%	2.8%	2.5%
Hispanic	47.4%	49.4%	52.3%	53.8%	55.7%
Native Amer	0.6%	0.6%	0.5%	0.4%	0.4%
Pac Island	0.4%	0.4%	0.3%	0.3%	0.2%
Two or More	3.3%	3.7%	3.5%	3.6%	3.6%
Unknown	1.5%	1.0%	0.9%	0.9%	0.8%
White	38.5%	36.8%	34.4%	32.8%	31.6%

Student Gender - Criminal Justice

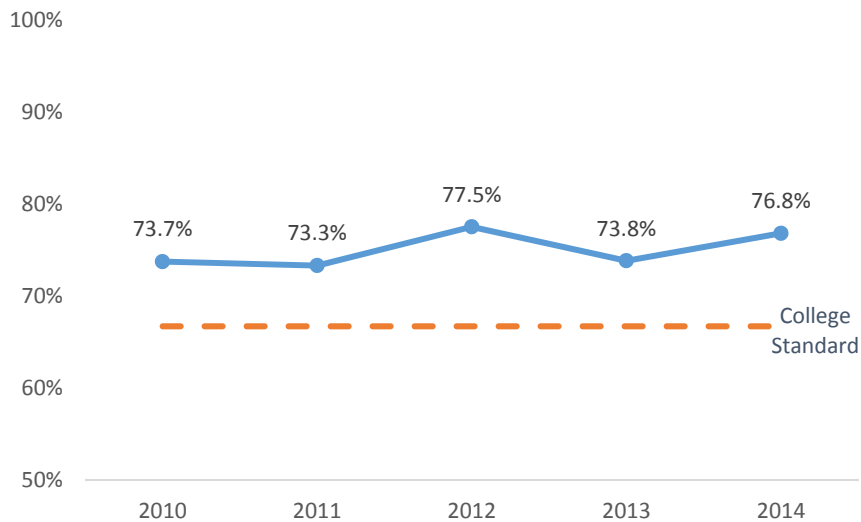


Student Gender - Ventura College

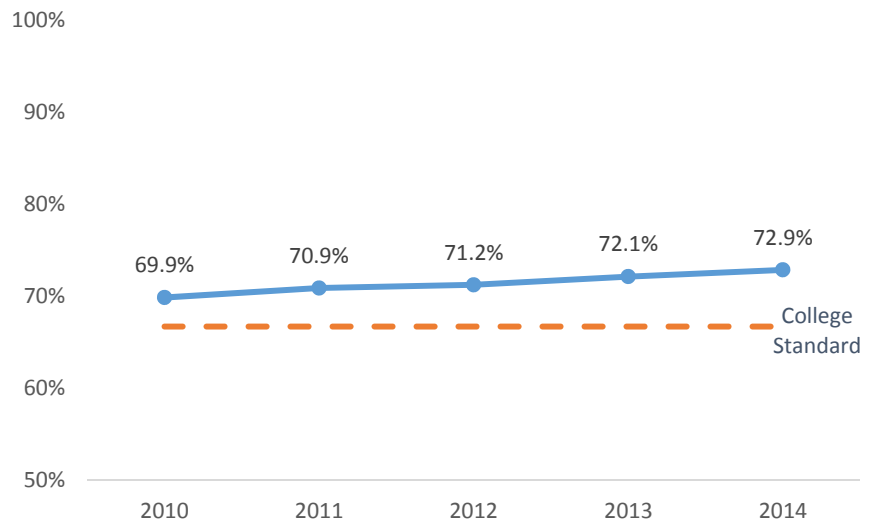


Section B - Course Success Rate

Course Success Rate - Criminal Justice

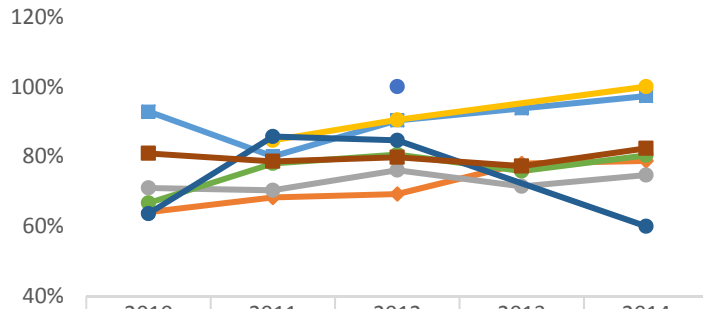


Course Success Rate - Ventura College



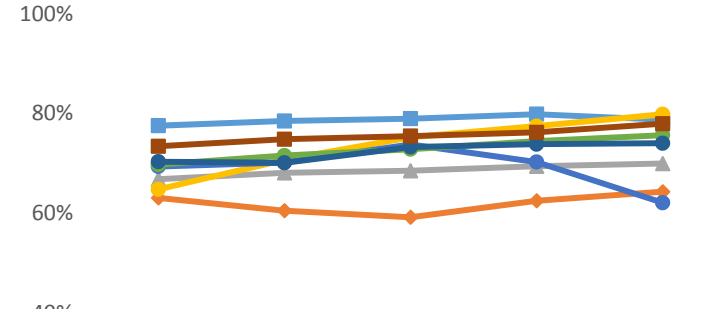
2015-2016 Program Review Datasheet Criminal Justice

Course Success Rate by Ethnicity - Criminal Justice*



	2010	2011	2012	2013	2014
Asian	92.9%	80.0%	90.3%	93.8%	97.3%
Black	64.1%	68.3%	69.2%	78.0%	78.7%
Hispanic	71.0%	70.3%	76.1%	71.4%	74.7%
Native Amer		84.6%	90.5%		100.0%
Pac Island			100.0%		
Two or More	66.7%	78.0%	80.6%	75.8%	80.3%
Unknown	63.6%	85.7%	84.6%		60.0%
White	80.9%	78.6%	79.8%	77.2%	82.3%

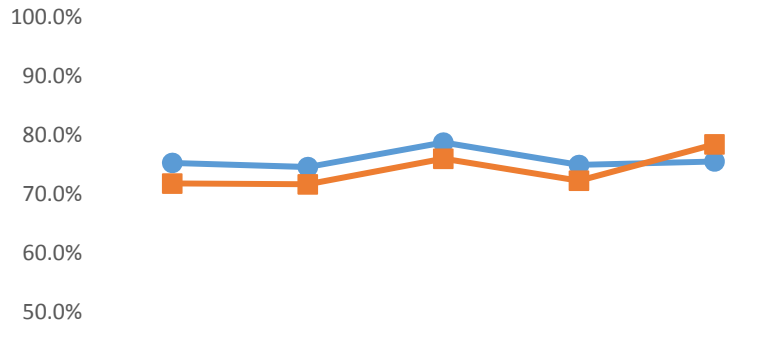
Course Success Rate by Ethnicity - Ventura College



	2010	2011	2012	2013	2014
Asian	77.6%	78.5%	79.0%	79.9%	78.8%
Black	63.1%	60.5%	59.2%	62.5%	64.3%
Hispanic	66.8%	68.1%	68.5%	69.4%	70.0%
Native Amer	64.8%	70.7%	75.2%	77.5%	79.8%
Pac Island	69.4%	70.2%	73.8%	70.3%	62.1%
Two or More	69.8%	71.6%	72.8%	74.5%	75.7%
Unknown	70.3%	70.1%	73.3%	73.8%	74.0%
White	73.4%	74.8%	75.5%	76.2%	78.0%

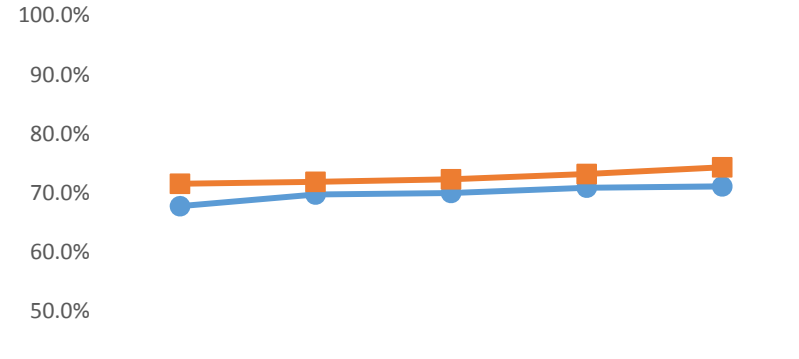
*Ethnicity data only displayed for cells with 10 or more students

Course Success Rate by Gender - Criminal Justice



	2010	2011	2012	2013	2014
Male	75.3%	74.6%	78.7%	74.9%	75.5%
Female	71.8%	71.7%	76.0%	72.3%	78.4%

Course Success Rate by Gender - Ventura College

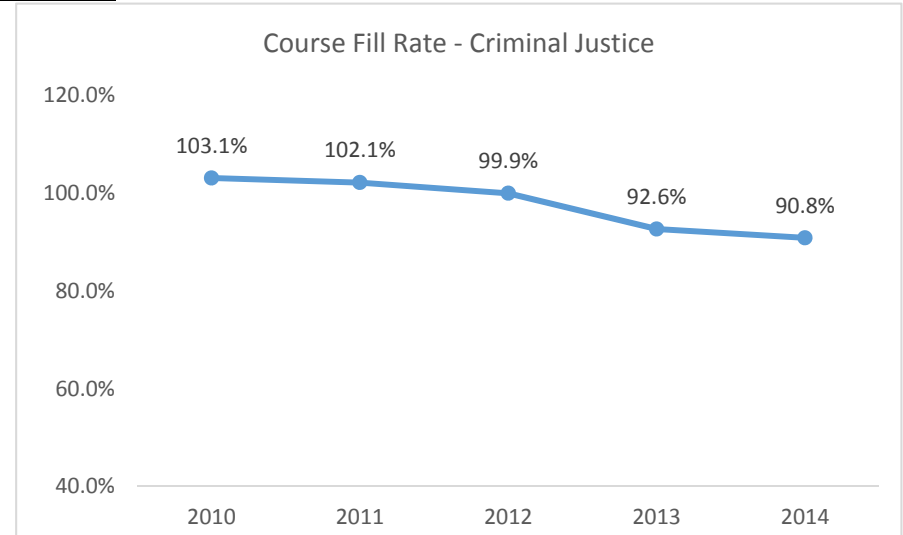


	2010	2011	2012	2013	2014
Male	67.8%	69.8%	70.0%	70.9%	71.1%
Female	71.6%	71.9%	72.3%	73.2%	74.3%

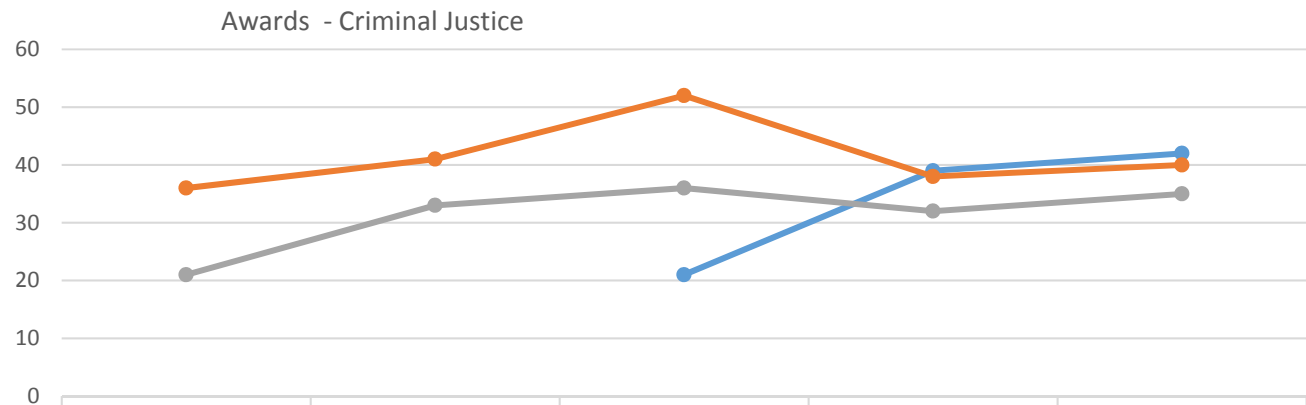
2015-2016 Program Review Datasheet

Criminal Justice

Section C - Productivity



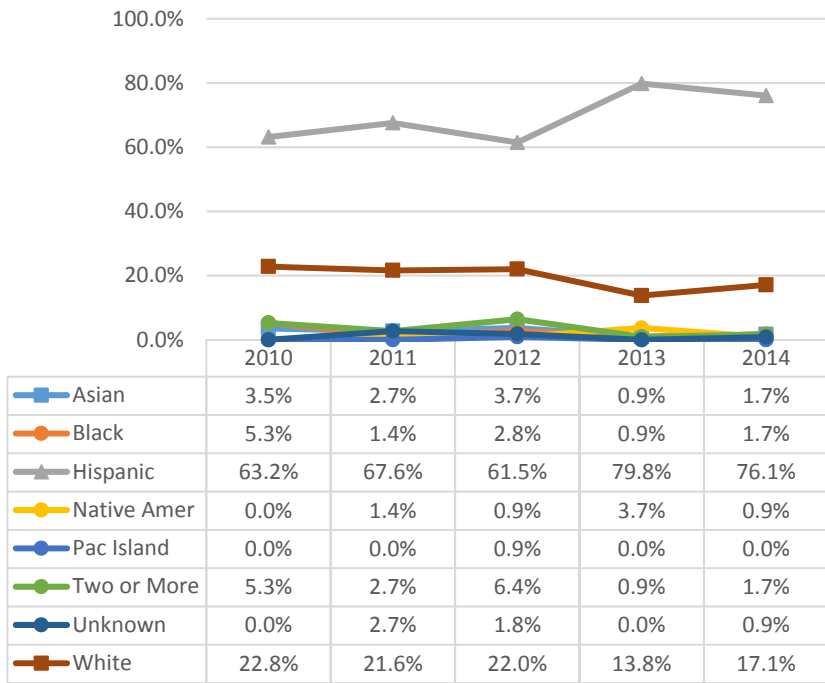
Section D - Degrees and Certificates Awarded



	2010	2011	2012	2013	2014
Admin of Justice CSU Transfer Assoc in Science for Transfer			21	39	42
Criminal Justice Associate in Science	36	41	52	38	40
Criminal Justice Certificate/30 - 59.5 units	21	33	36	32	35

2015-2016 Program Review Datasheet Criminal Justice

Awards by Ethnicity - Criminal Justice



Awards by Gender - Criminal Justice

