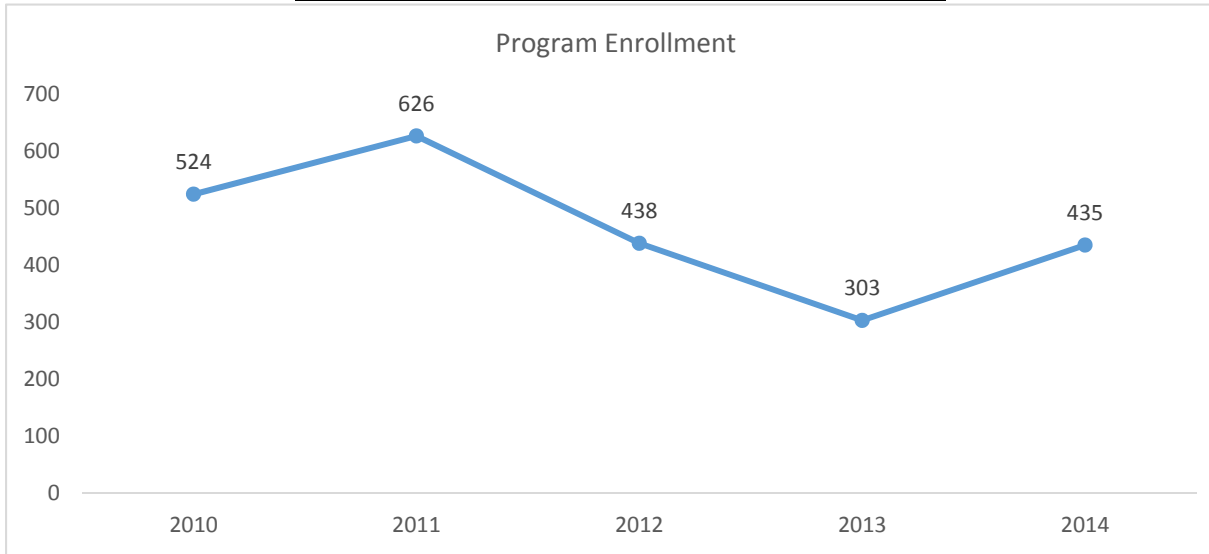
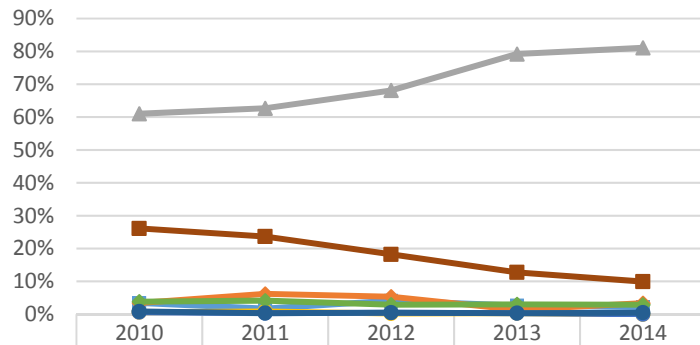


2015-2016 Program Review Datasheet Counseling/Personal Growth Section A - Enrollment and Student Demographics

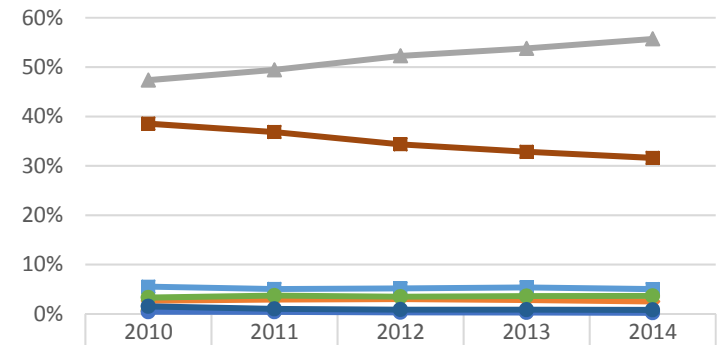


Student Ethnicity - Counseling/Personal Growth



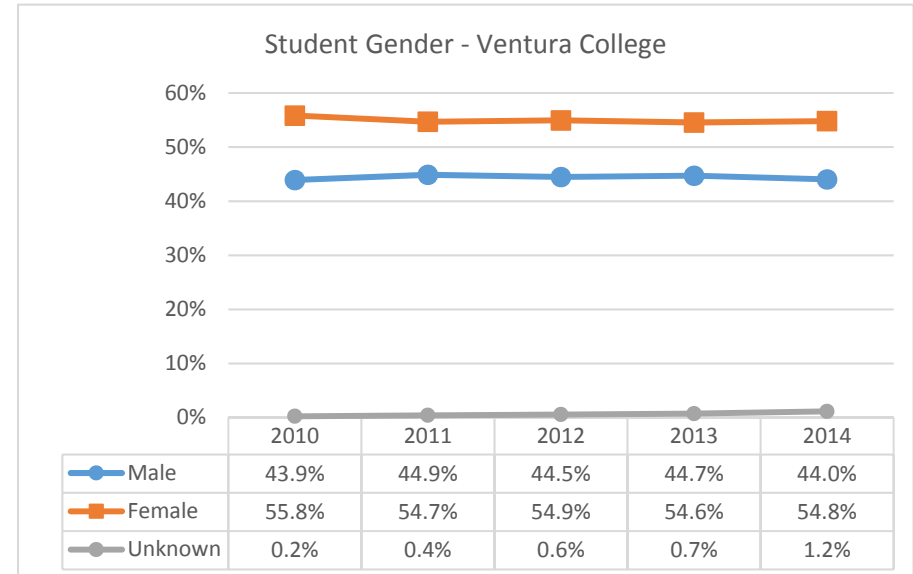
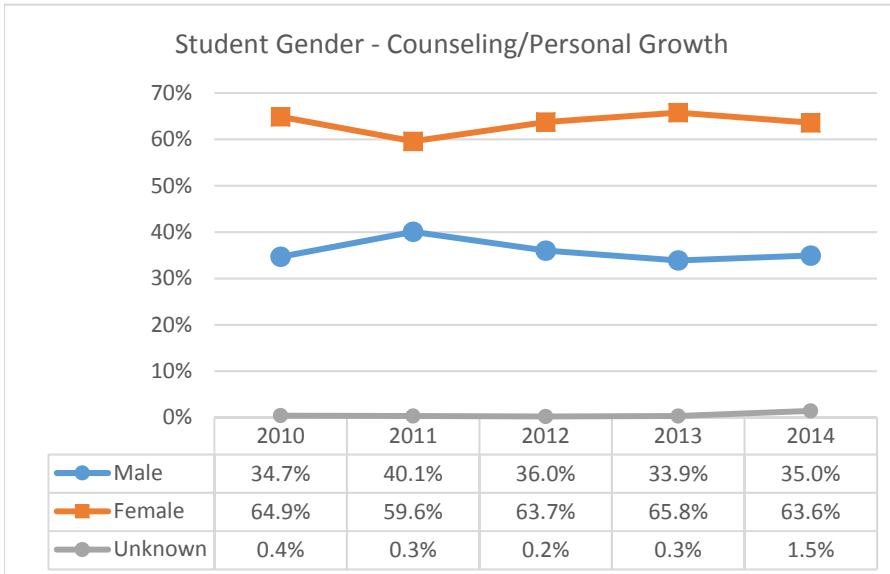
Ethnicity	2010	2011	2012	2013	2014
Asian	3.4%	1.7%	4.1%	2.7%	2.2%
Black	3.4%	6.2%	5.4%	1.3%	3.4%
Hispanic	61.0%	62.7%	68.1%	79.2%	81.1%
Native Amer	0.6%	0.9%	0.2%	0.3%	0.0%
Pac Island	0.6%	0.3%	0.5%	0.3%	0.0%
Two or More	3.9%	4.1%	2.9%	3.0%	2.9%
Unknown	0.9%	0.3%	0.5%	0.3%	0.5%
White	26.1%	23.7%	18.2%	12.8%	10.0%

Student Ethnicity - Ventura College

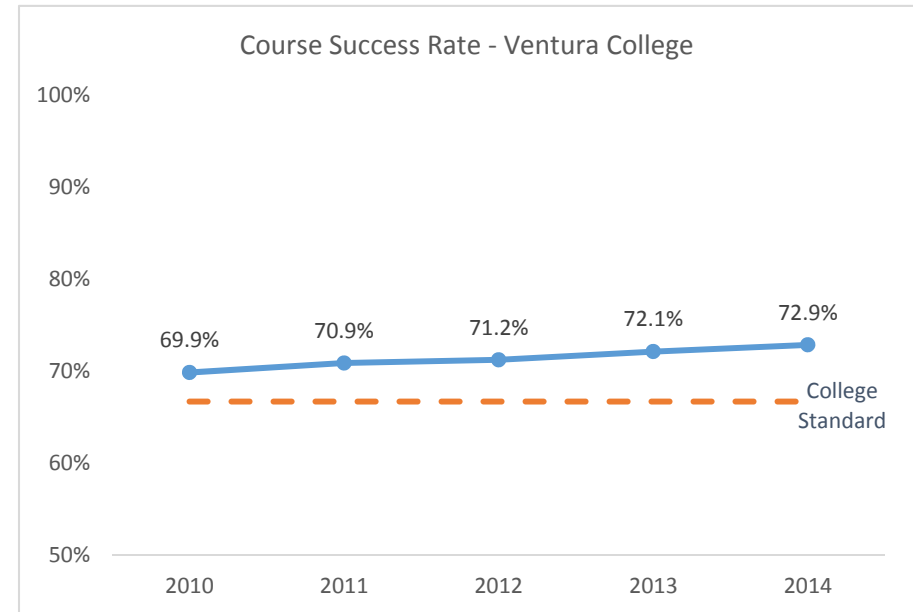
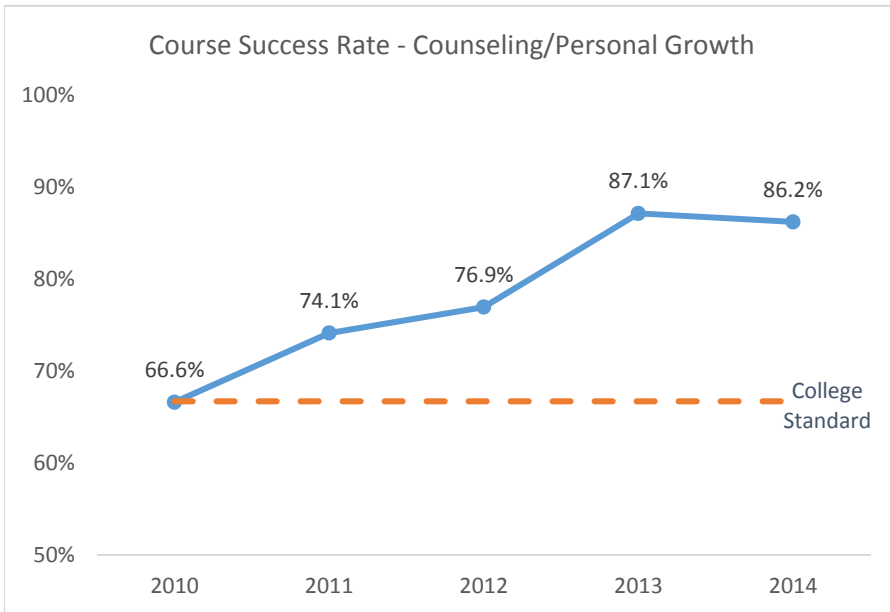


Ethnicity	2010	2011	2012	2013	2014
Asian	5.5%	5.1%	5.2%	5.4%	5.0%
Black	2.7%	2.9%	3.0%	2.8%	2.5%
Hispanic	47.4%	49.4%	52.3%	53.8%	55.7%
Native Amer	0.6%	0.6%	0.5%	0.4%	0.4%
Pac Island	0.4%	0.4%	0.3%	0.3%	0.2%
Two or More	3.3%	3.7%	3.5%	3.6%	3.6%
Unknown	1.5%	1.0%	0.9%	0.9%	0.8%
White	38.5%	36.8%	34.4%	32.8%	31.6%

2015-2016 Program Review Datasheet Counseling/Personal Growth

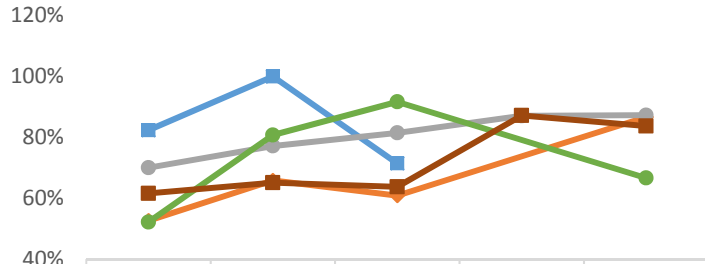


Section B - Course Success Rate



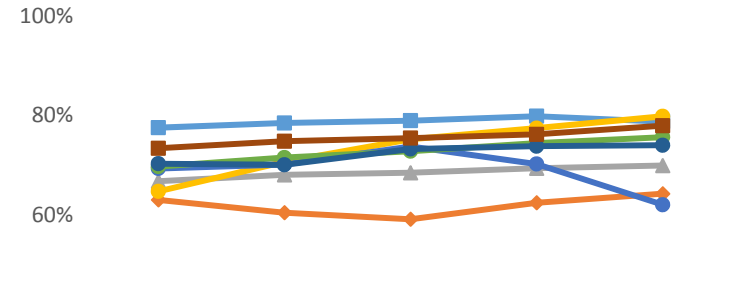
2015-2016 Program Review Datasheet Counseling/Personal Growth

Course Success Rate by Ethnicity - Counseling/Personal Growth*



	2010	2011	2012	2013	2014
Asian	82.4%	100.0%	71.4%		
Black	52.6%	65.9%	60.9%		86.7%
Hispanic	70.0%	77.2%	81.5%	87.1%	87.3%
Native Amer					
Pac Island					
Two or More	52.2%	80.8%	91.7%		66.7%
Unknown					
White	61.6%	65.1%	63.8%	87.2%	83.7%

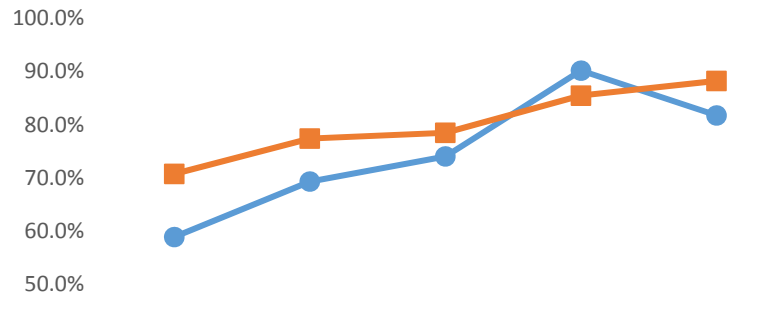
Course Success Rate by Ethnicity - Ventura College



	2010	2011	2012	2013	2014
Asian	77.6%	78.5%	79.0%	79.9%	78.8%
Black	63.1%	60.5%	59.2%	62.5%	64.3%
Hispanic	66.8%	68.1%	68.5%	69.4%	70.0%
Native Amer	64.8%	70.7%	75.2%	77.5%	79.8%
Pac Island	69.4%	70.2%	73.8%	70.3%	62.1%
Two or More	69.8%	71.6%	72.8%	74.5%	75.7%
Unknown	70.3%	70.1%	73.3%	73.8%	74.0%
White	73.4%	74.8%	75.5%	76.2%	78.0%

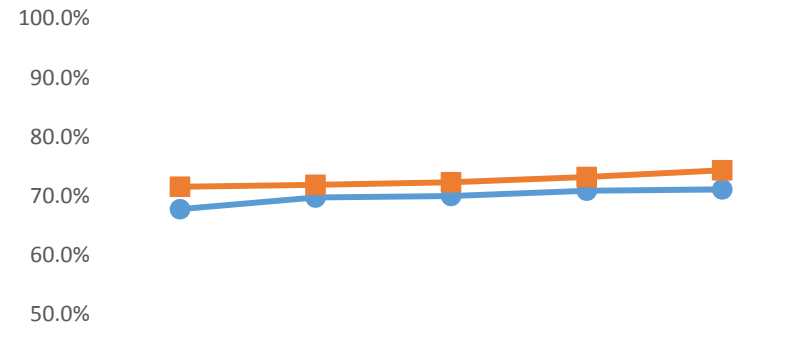
*Ethnicity data only displayed for cells with 10 or more students

Course Success Rate by Gender - Counseling/Personal Growth



	2010	2011	2012	2013	2014
Male	58.9%	69.3%	74.1%	90.2%	81.8%
Female	70.8%	77.4%	78.5%	85.5%	88.3%

Course Success Rate by Gender - Ventura College



	2010	2011	2012	2013	2014
Male	67.8%	69.8%	70.0%	70.9%	71.1%
Female	71.6%	71.9%	72.3%	73.2%	74.3%



2015-2016 Program Review Datasheet
Counseling/Personal Growth
Section C - Productivity

