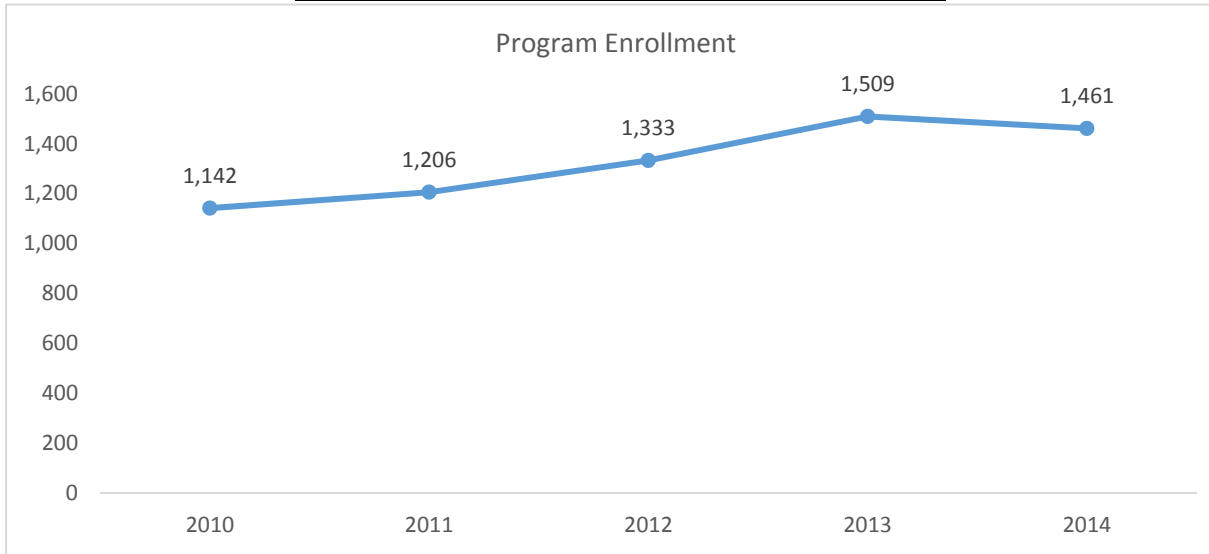


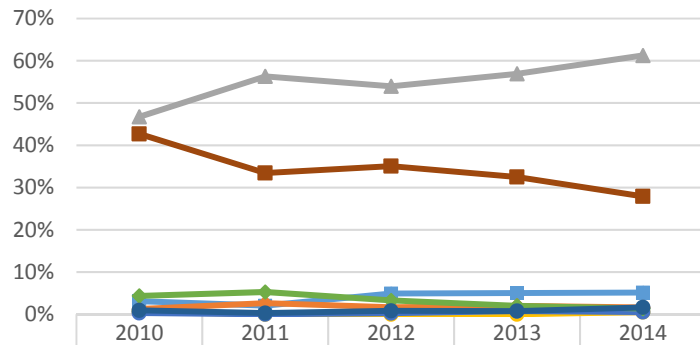
2015-2016 Program Review Datasheet

Automotive

Section A - Enrollment and Student Demographics

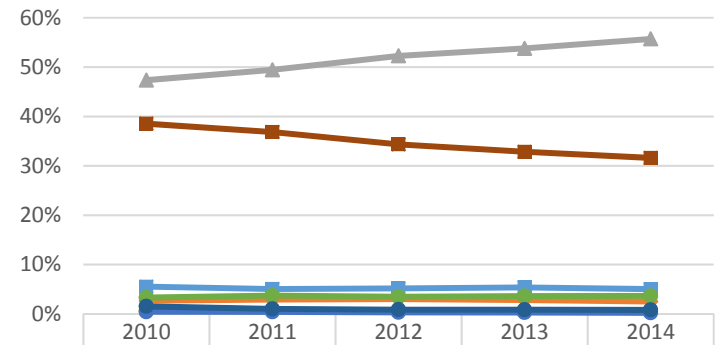


Student Ethnicity - Automotive



	2010	2011	2012	2013	2014
Asian	3.1%	2.1%	4.9%	5.0%	5.1%
Black	1.2%	2.6%	1.6%	2.0%	1.6%
Hispanic	46.7%	56.3%	54.0%	56.9%	61.2%
Native Amer	0.6%	0.0%	0.0%	0.0%	0.5%
Pac Island	0.3%	0.0%	0.3%	0.8%	0.5%
Two or More	4.4%	5.3%	3.3%	2.0%	1.4%
Unknown	0.9%	0.3%	0.8%	0.8%	1.6%
White	42.7%	33.4%	35.1%	32.5%	27.9%

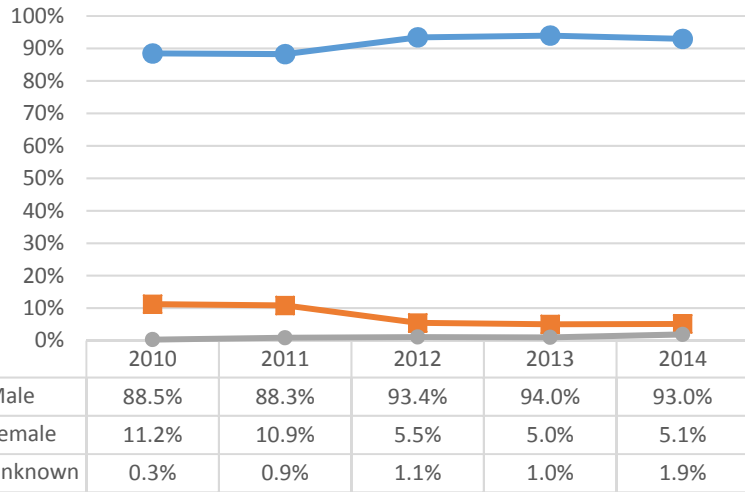
Student Ethnicity - Ventura College



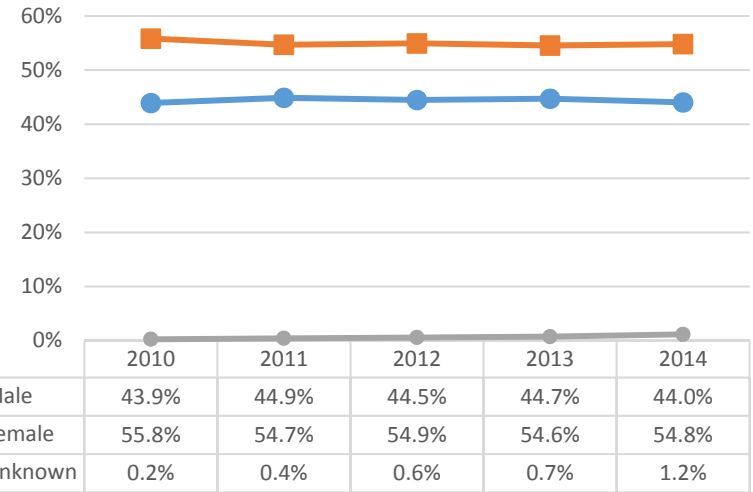
	2010	2011	2012	2013	2014
Asian	5.5%	5.1%	5.2%	5.4%	5.0%
Black	2.7%	2.9%	3.0%	2.8%	2.5%
Hispanic	47.4%	49.4%	52.3%	53.8%	55.7%
Native Amer	0.6%	0.6%	0.5%	0.4%	0.4%
Pac Island	0.4%	0.4%	0.3%	0.3%	0.2%
Two or More	3.3%	3.7%	3.5%	3.6%	3.6%
Unknown	1.5%	1.0%	0.9%	0.9%	0.8%
White	38.5%	36.8%	34.4%	32.8%	31.6%

2015-2016 Program Review Datasheet Automotive

Student Gender - Automotive

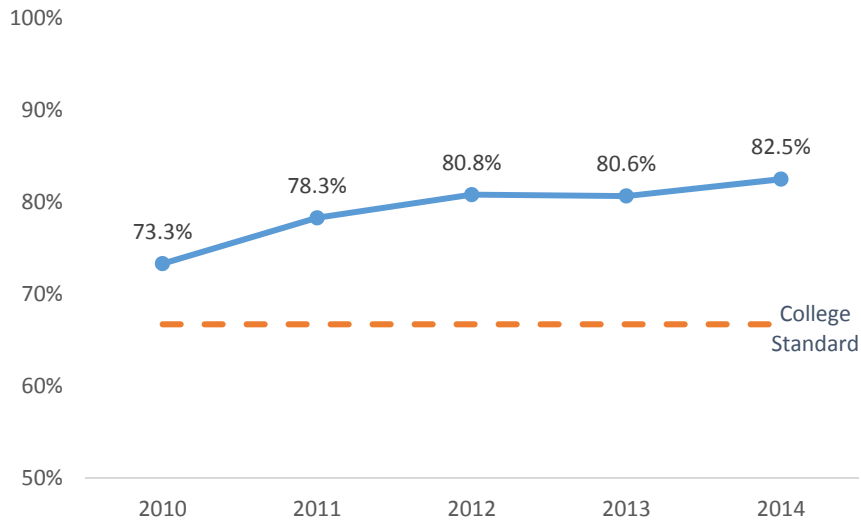


Student Gender - Ventura College

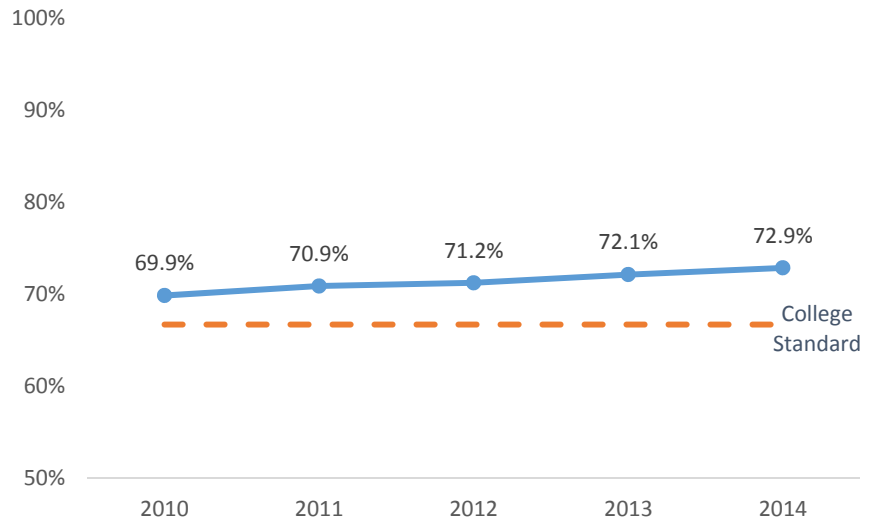


Section B - Course Success Rate

Course Success Rate - Automotive

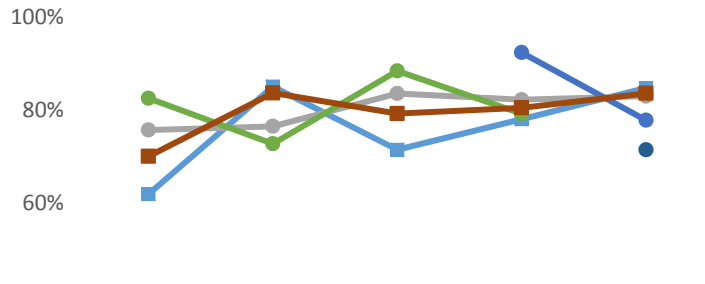


Course Success Rate - Ventura College



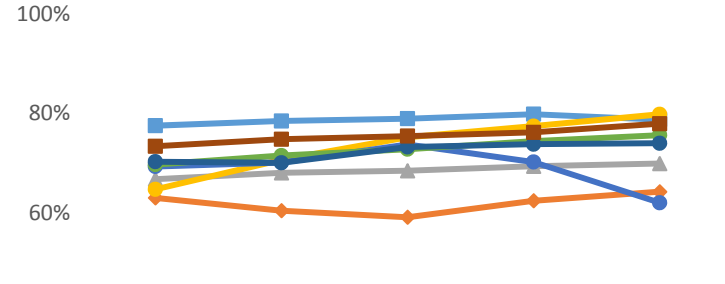
2015-2016 Program Review Datasheet Automotive

Course Success Rate by Ethnicity - Automotive*



	2010	2011	2012	2013	2014
Asian	61.9%	85.0%	71.4%	78.0%	84.7%
Black		25.0%	14.3%	34.8%	
Hispanic	75.7%	76.5%	83.5%	82.2%	83.0%
Native Amer					
Pac Island				92.3%	77.8%
Two or More	82.5%	72.7%	88.4%	79.2%	
Unknown					71.4%
White	70.0%	83.6%	79.2%	80.5%	83.5%

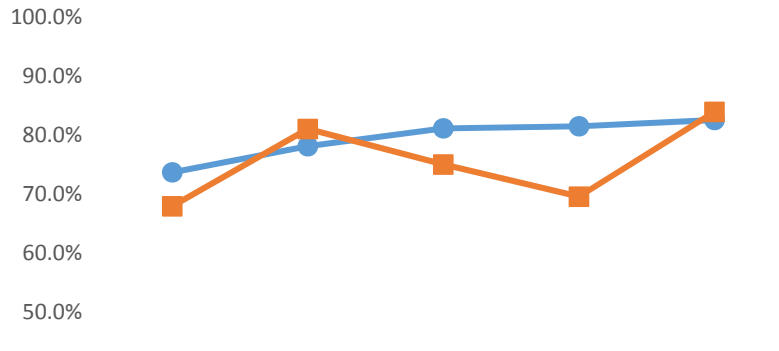
Course Success Rate by Ethnicity - Ventura College



	2010	2011	2012	2013	2014
Asian	77.6%	78.5%	79.0%	79.9%	78.8%
Black	63.1%	60.5%	59.2%	62.5%	64.3%
Hispanic	66.8%	68.1%	68.5%	69.4%	70.0%
Native Amer	64.8%	70.7%	75.2%	77.5%	79.8%
Pac Island	69.4%	70.2%	73.8%	70.3%	62.1%
Two or More	69.8%	71.6%	72.8%	74.5%	75.7%
Unknown	70.3%	70.1%	73.3%	73.8%	74.0%
White	73.4%	74.8%	75.5%	76.2%	78.0%

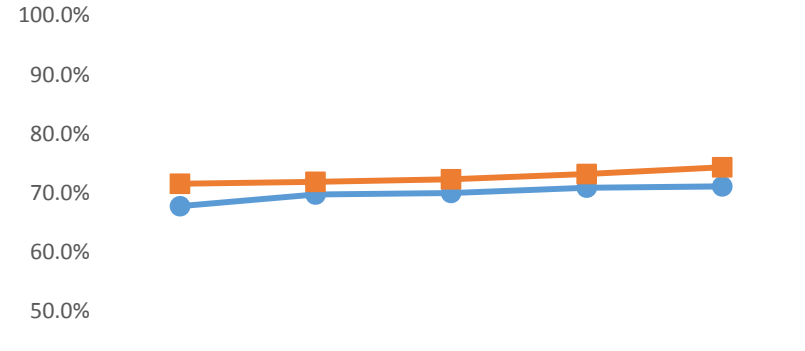
*Ethnicity data only displayed for cells with 10 or more students

Course Success Rate by Gender - Automotive



	2010	2011	2012	2013	2014
Male	73.7%	78.1%	81.1%	81.5%	82.5%
Female	67.9%	81.0%	75.0%	69.6%	83.9%

Course Success Rate by Gender - Ventura College

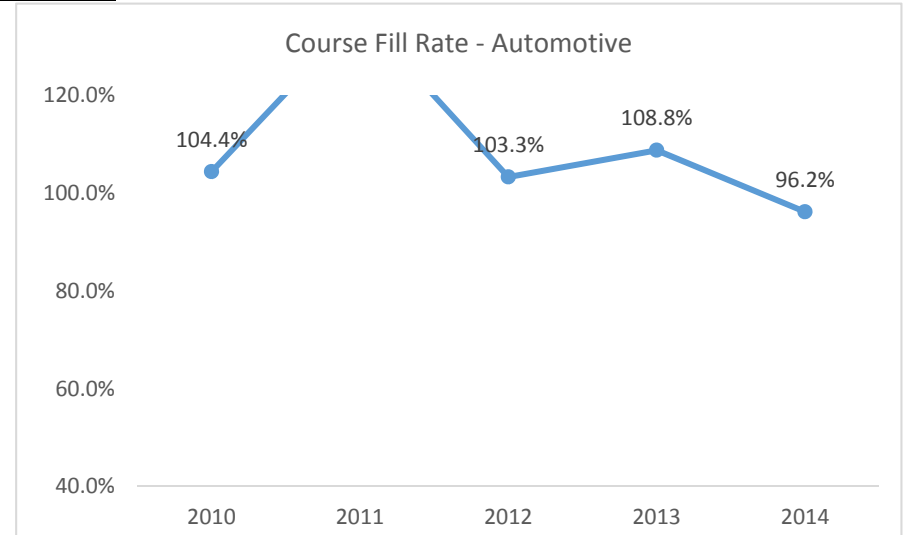
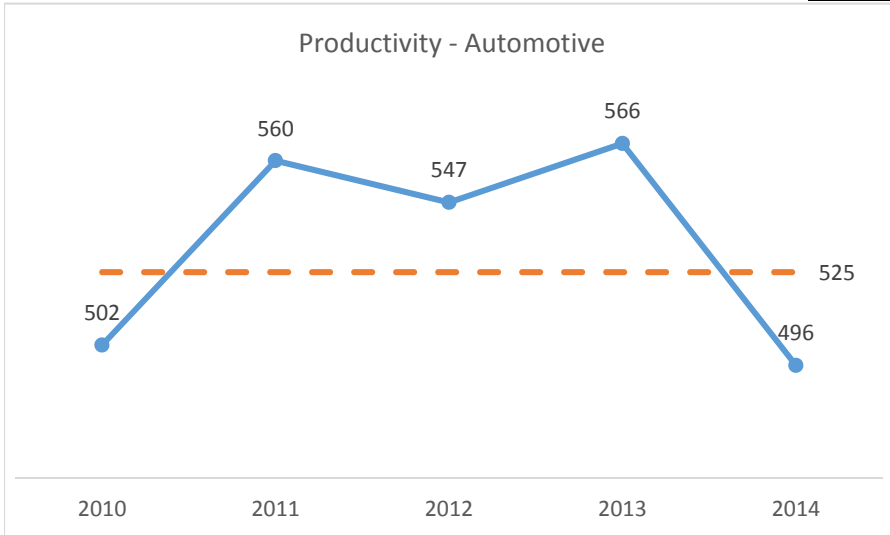


	2010	2011	2012	2013	2014
Male	67.8%	69.8%	70.0%	70.9%	71.1%
Female	71.6%	71.9%	72.3%	73.2%	74.3%

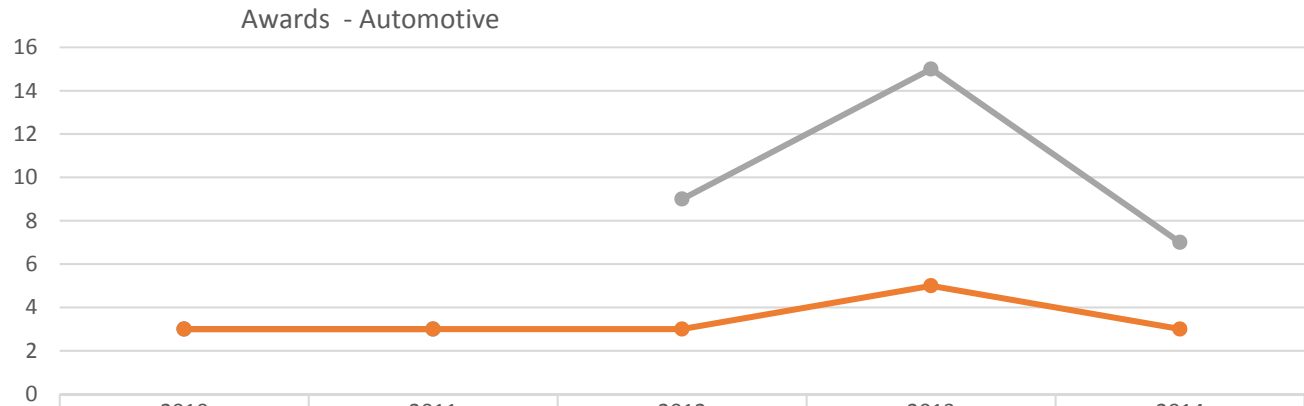
2015-2016 Program Review Datasheet

Automotive

Section C - Productivity



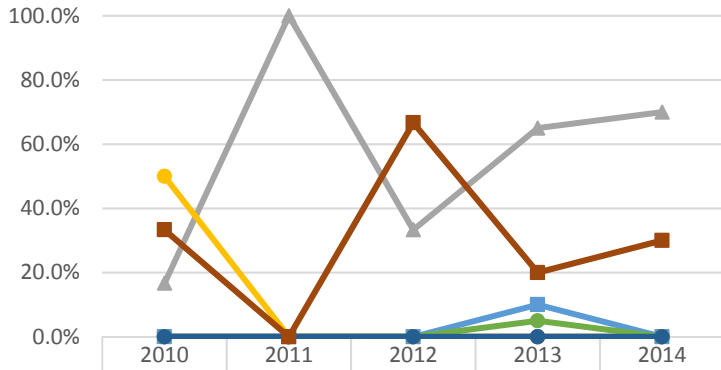
Section D - Degrees and Certificates Awarded



	2010	2011	2012	2013	2014
Automotive Certificate/30 - 59.5 units	3	3			
Automotive Technology Associate in Science	3	3	3	5	3
Automotive Technology Certificate/30 - 59.5 units			9	15	7

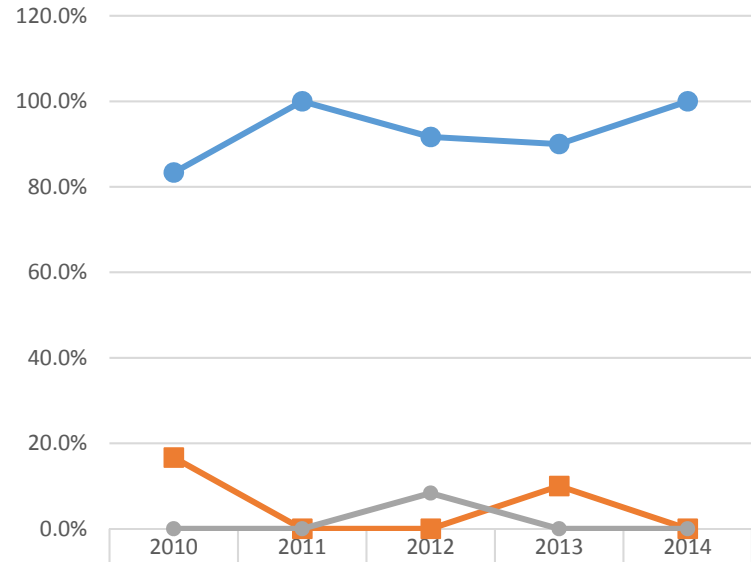
2015-2016 Program Review Datasheet Automotive

Awards by Ethnicity - Automotive



	2010	2011	2012	2013	2014
Asian	0.0%	0.0%	0.0%	10.0%	0.0%
Black	0.0%	0.0%	0.0%	0.0%	0.0%
Hispanic	16.7%	100.0%	33.3%	65.0%	70.0%
Native Amer	50.0%	0.0%	0.0%	0.0%	0.0%
Pac Island	0.0%	0.0%	0.0%	0.0%	0.0%
Two or More	0.0%	0.0%	0.0%	5.0%	0.0%
Unknown	0.0%	0.0%	0.0%	0.0%	0.0%
White	33.3%	0.0%	66.7%	20.0%	30.0%

Awards by Gender - Automotive



	2010	2011	2012	2013	2014
Male	83.3%	100.0%	91.7%	90.0%	100.0%
Female	16.7%	0.0%	0.0%	10.0%	0.0%
Unknown	0.0%	0.0%	8.3%	0.0%	0.0%