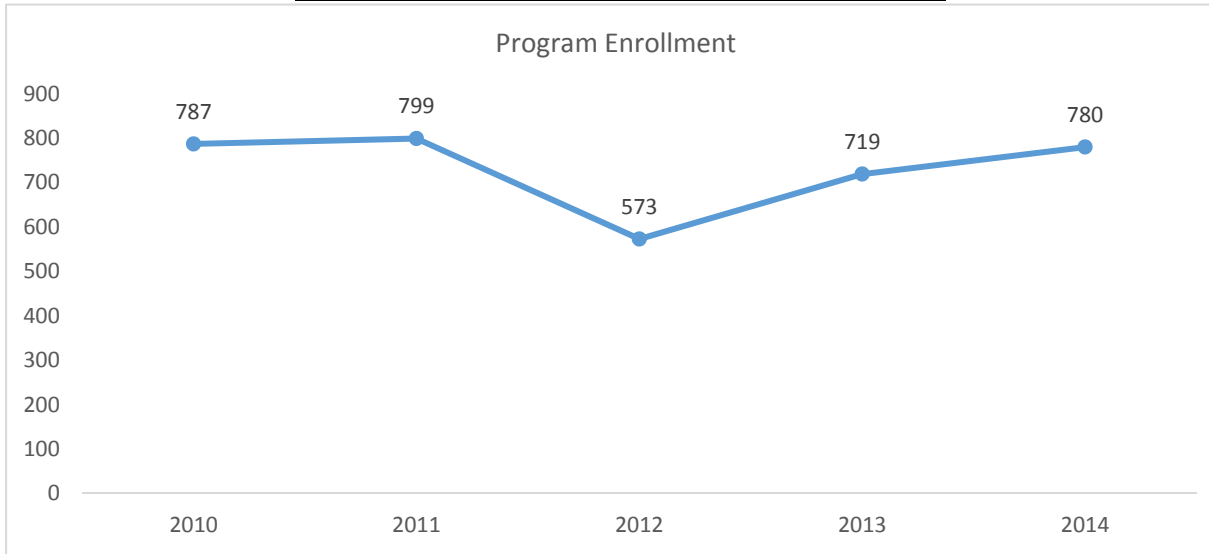


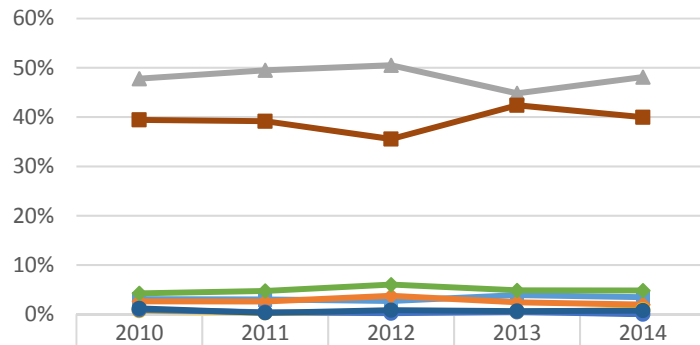
2015-2016 Program Review Datasheet

Astronomy

Section A - Enrollment and Student Demographics

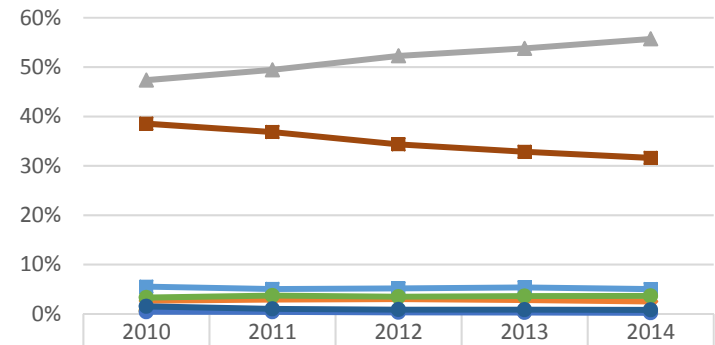


Student Ethnicity - Astronomy



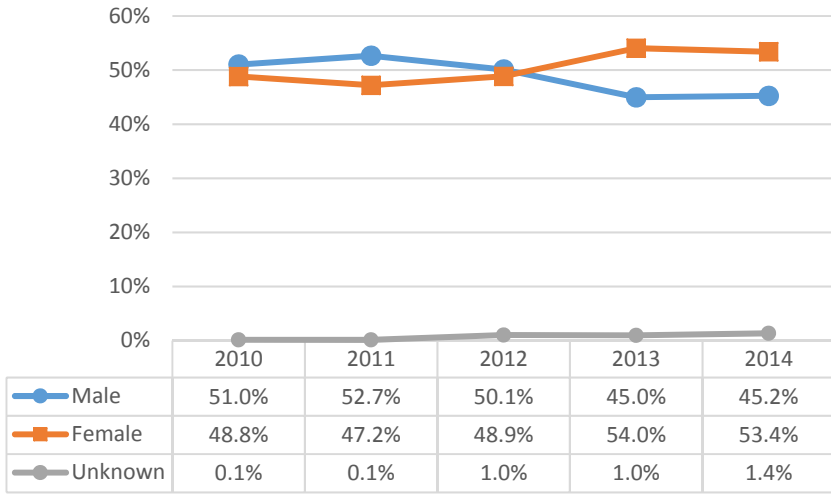
Asian	3.1%	3.0%	2.7%	3.9%	3.5%
Black	2.6%	2.6%	3.7%	2.4%	2.0%
Hispanic	47.8%	49.5%	50.5%	44.8%	48.1%
Native Amer	0.7%	0.3%	0.4%	0.5%	0.9%
Pac Island	0.9%	0.4%	0.2%	0.5%	0.0%
Two or More	4.3%	4.7%	6.0%	4.9%	4.8%
Unknown	1.2%	0.3%	0.8%	0.6%	0.8%
White	39.4%	39.2%	35.6%	42.4%	40.0%

Student Ethnicity - Ventura College

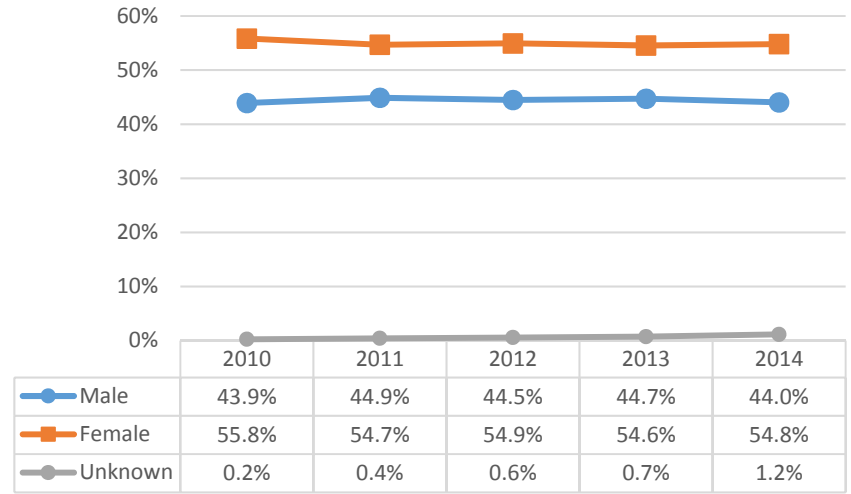


Asian	5.5%	5.1%	5.2%	5.4%	5.0%
Black	2.7%	2.9%	3.0%	2.8%	2.5%
Hispanic	47.4%	49.4%	52.3%	53.8%	55.7%
Native Amer	0.6%	0.6%	0.5%	0.4%	0.4%
Pac Island	0.4%	0.4%	0.3%	0.3%	0.2%
Two or More	3.3%	3.7%	3.5%	3.6%	3.6%
Unknown	1.5%	1.0%	0.9%	0.9%	0.8%
White	38.5%	36.8%	34.4%	32.8%	31.6%

Student Gender - Astronomy

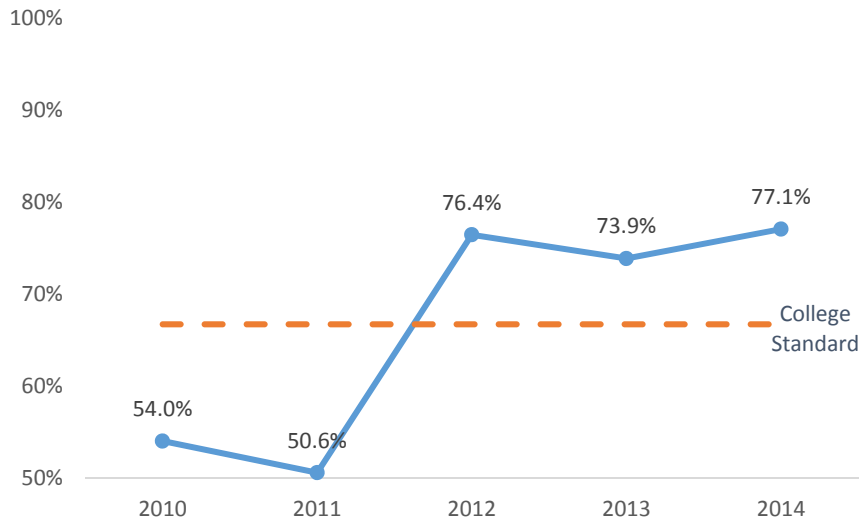


Student Gender - Ventura College

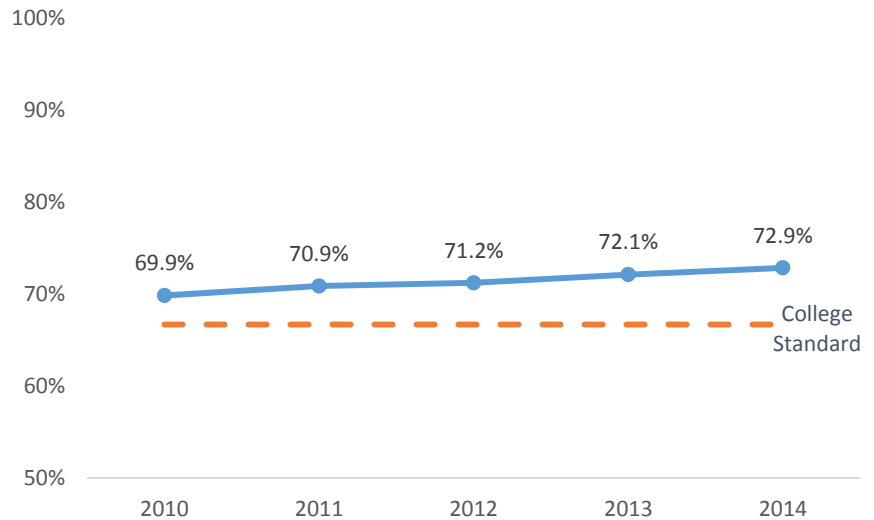


Section B - Course Success Rate

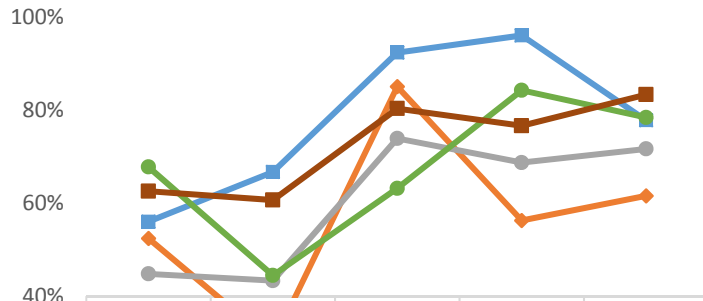
Course Success Rate - Astronomy



Course Success Rate - Ventura College

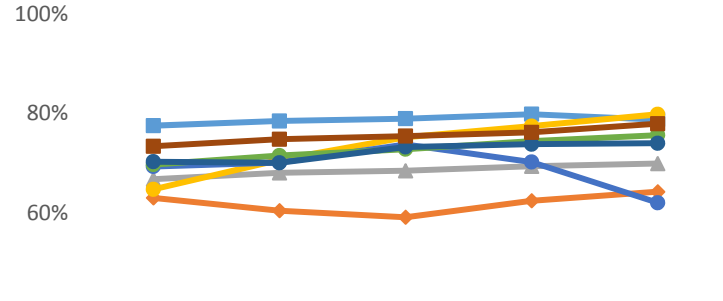


Course Success Rate by Ethnicity - Astronomy*



	2010	2011	2012	2013	2014
Asian	56.0%	66.7%	92.3%	96.0%	77.8%
Black	52.4%	30.0%	85.0%	56.3%	61.5%
Hispanic	44.8%	43.3%	73.9%	68.7%	71.6%
Native Amer					
Pac Island					
Two or More	67.7%	44.4%	63.2%	84.2%	78.4%
Unknown					
White	62.5%	60.6%	80.3%	76.6%	83.3%

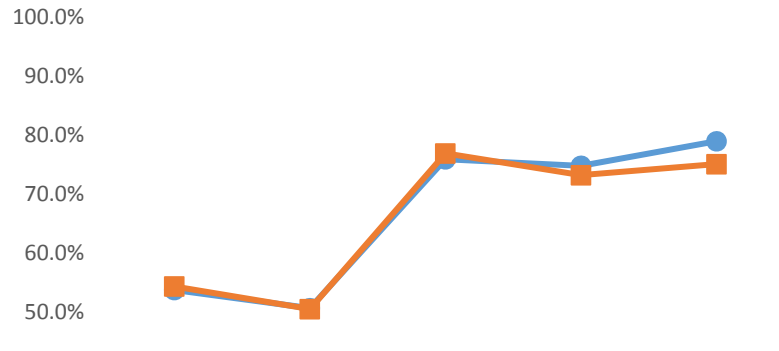
Course Success Rate by Ethnicity - Ventura College



	2010	2011	2012	2013	2014
Asian	77.6%	78.5%	79.0%	79.9%	78.8%
Black	63.1%	60.5%	59.2%	62.5%	64.3%
Hispanic	66.8%	68.1%	68.5%	69.4%	70.0%
Native Amer	64.8%	70.7%	75.2%	77.5%	79.8%
Pac Island	69.4%	70.2%	73.8%	70.3%	62.1%
Two or More	69.8%	71.6%	72.8%	74.5%	75.7%
Unknown	70.3%	70.1%	73.3%	73.8%	74.0%
White	73.4%	74.8%	75.5%	76.2%	78.0%

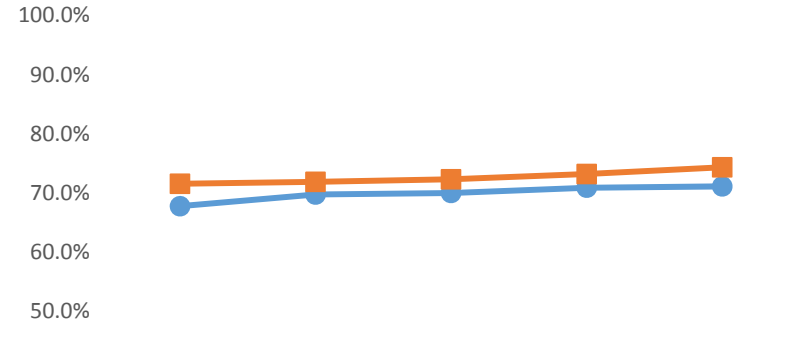
*Ethnicity data only displayed for cells with 10 or more students

Course Success Rate by Gender - Astronomy



	2010	2011	2012	2013	2014
Male	53.8%	50.7%	75.9%	74.8%	78.9%
Female	54.4%	50.5%	76.9%	73.2%	75.1%

Course Success Rate by Gender - Ventura College

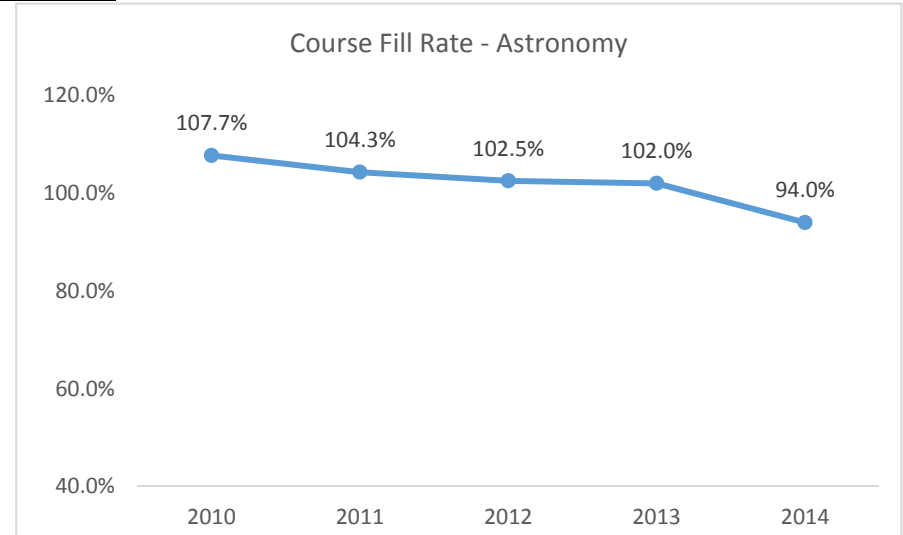
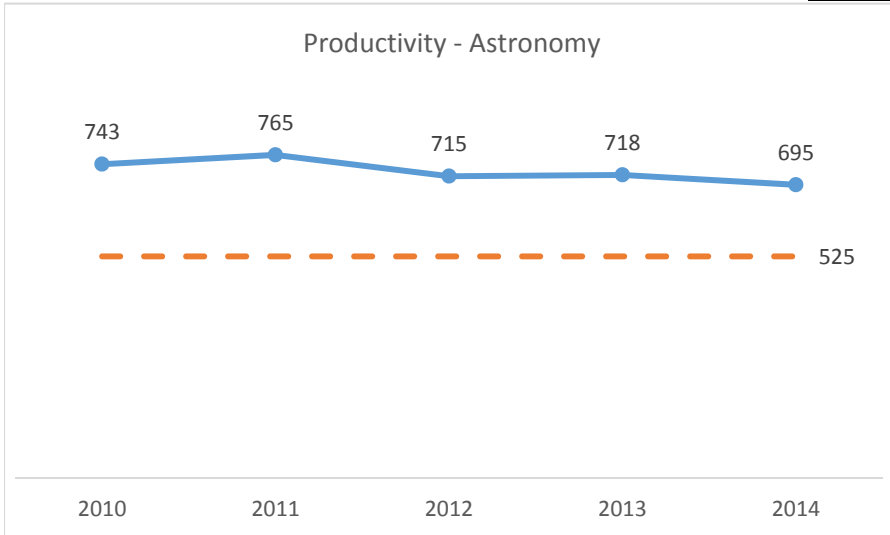


	2010	2011	2012	2013	2014
Male	67.8%	69.8%	70.0%	70.9%	71.1%
Female	71.6%	71.9%	72.3%	73.2%	74.3%

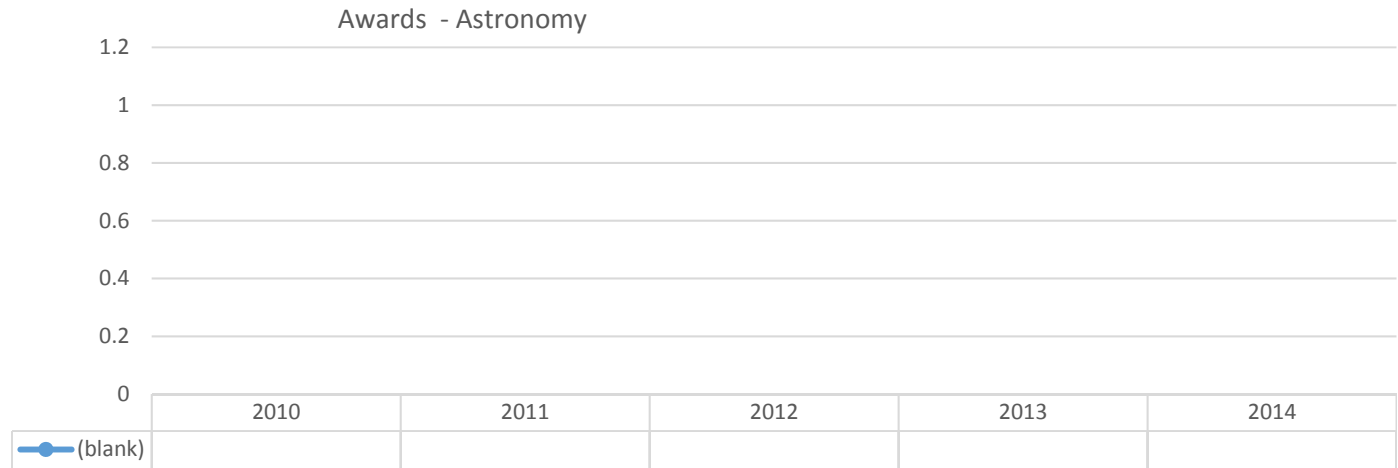
2015-2016 Program Review Datasheet

Astronomy

Section C - Productivity



Section D - Degrees and Certificates Awarded



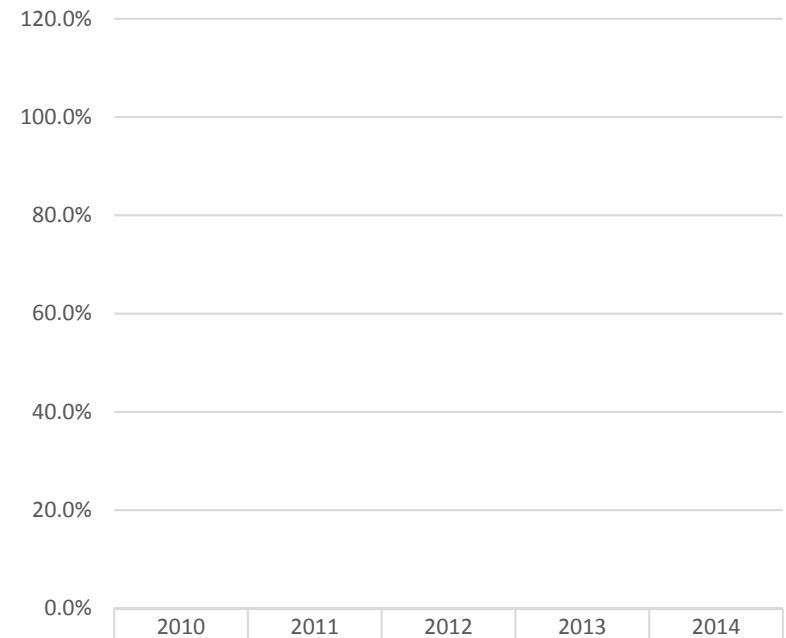
2015-2016 Program Review Datasheet Astronomy

Awards by Ethnicity - Astronomy



	2010	2011	2012	2013	2014
Asian					
Black					
Hispanic					
Native Amer					
Pac Island					
Two or More					
Unknown					
White					

Awards by Gender - Astronomy



	2010	2011	2012	2013	2014
(blank)					