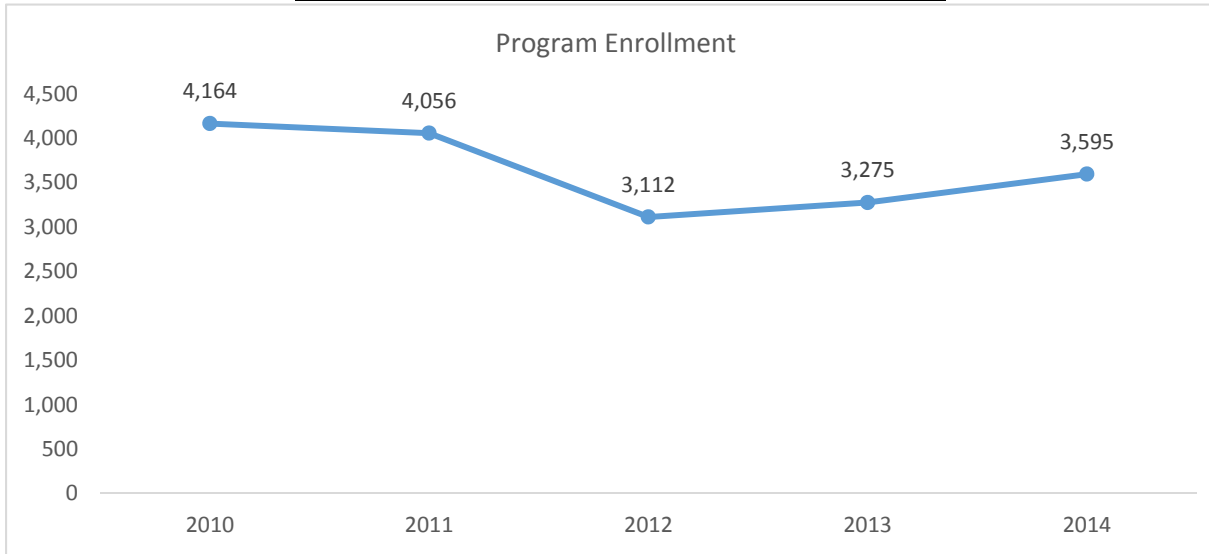


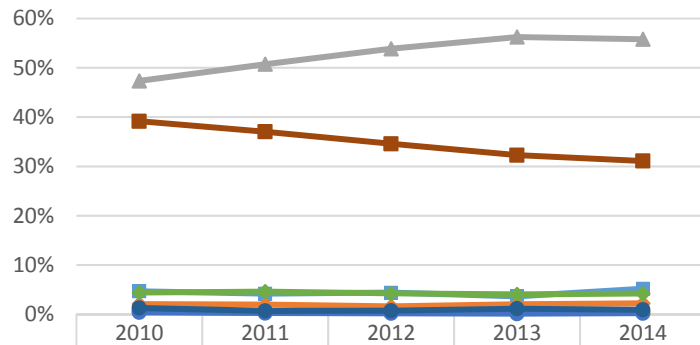
# 2015-2016 Program Review Datasheet

## Art

### Section A - Enrollment and Student Demographics

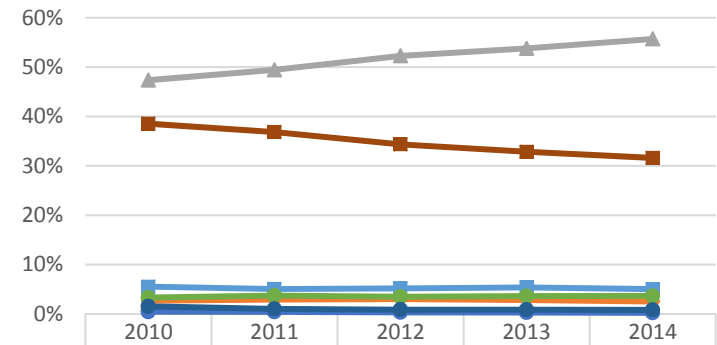


Student Ethnicity - Art



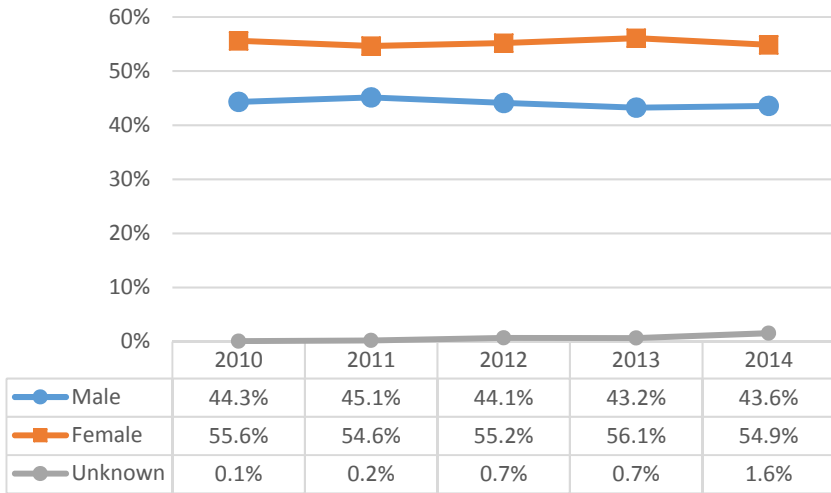
	2010	2011	2012	2013	2014
Asian	4.7%	4.2%	4.4%	3.6%	5.2%
Black	2.1%	2.0%	1.6%	2.0%	2.2%
Hispanic	47.4%	50.7%	53.9%	56.2%	55.8%
Native Amer	0.7%	0.5%	0.4%	0.5%	0.4%
Pac Island	0.4%	0.3%	0.2%	0.1%	0.2%
Two or More	4.4%	4.6%	4.2%	4.0%	4.2%
Unknown	1.3%	0.7%	0.7%	1.1%	0.9%
White	39.2%	37.0%	34.6%	32.3%	31.1%

Student Ethnicity - Ventura College

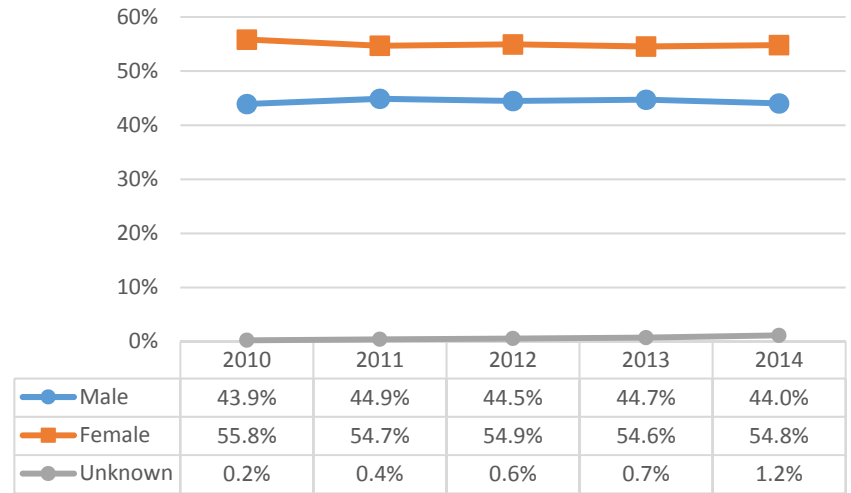


	2010	2011	2012	2013	2014
Asian	5.5%	5.1%	5.2%	5.4%	5.0%
Black	2.7%	2.9%	3.0%	2.8%	2.5%
Hispanic	47.4%	49.4%	52.3%	53.8%	55.7%
Native Amer	0.6%	0.6%	0.5%	0.4%	0.4%
Pac Island	0.4%	0.4%	0.3%	0.3%	0.2%
Two or More	3.3%	3.7%	3.5%	3.6%	3.6%
Unknown	1.5%	1.0%	0.9%	0.9%	0.8%
White	38.5%	36.8%	34.4%	32.8%	31.6%

Student Gender - Art

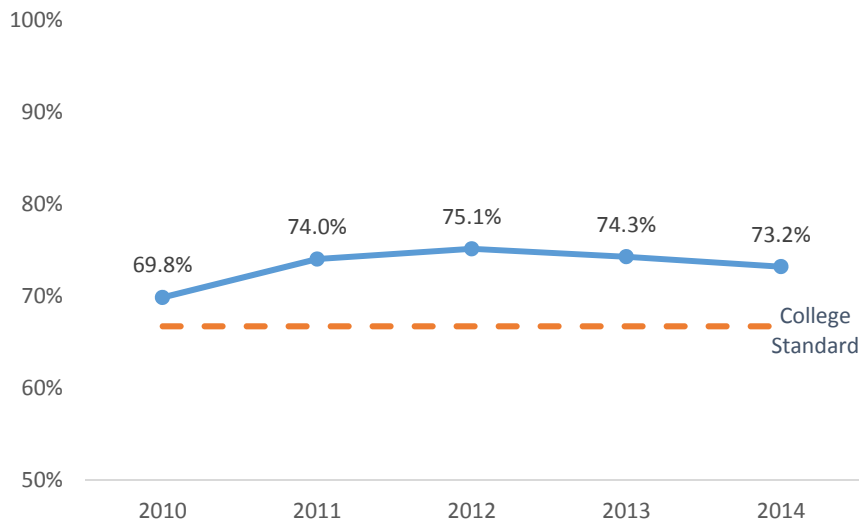


Student Gender - Ventura College

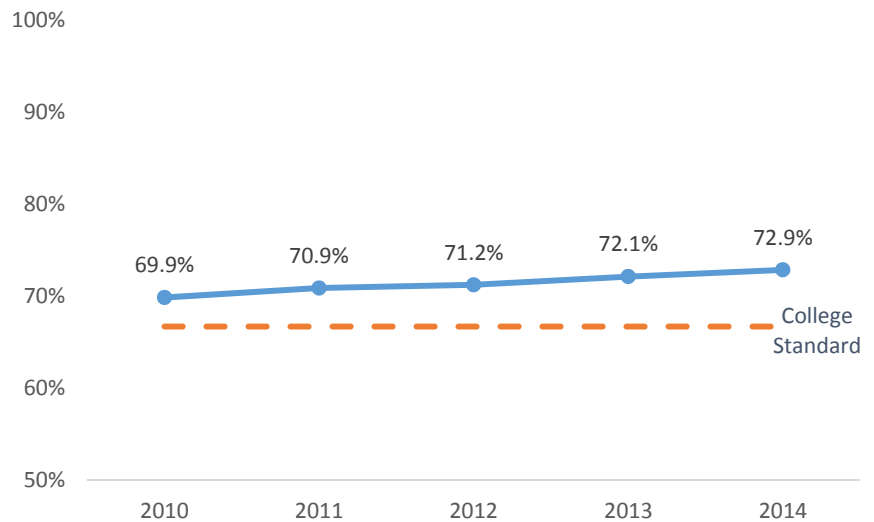


### Section B - Course Success Rate

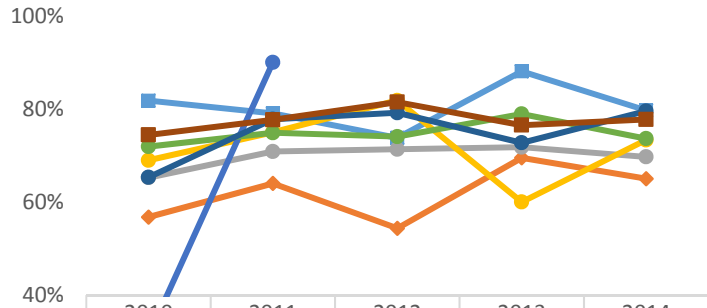
Course Success Rate - Art



Course Success Rate - Ventura College

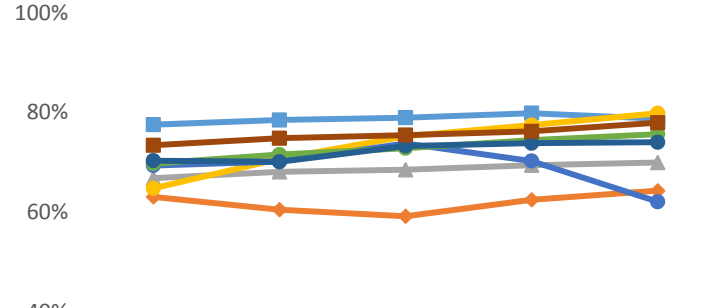


### Course Success Rate by Ethnicity - Art\*



	2010	2011	2012	2013	2014
Asian	81.8%	79.0%	73.8%	88.1%	79.7%
Black	56.8%	64.0%	54.3%	69.5%	65.0%
Hispanic	65.2%	70.8%	71.3%	71.8%	69.7%
Native Amer	69.0%	75.0%	81.8%	60.0%	73.3%
Pac Island	31.3%	90.0%			
Two or More	71.9%	74.9%	74.0%	78.9%	73.6%
Unknown	65.3%	77.8%	79.2%	72.7%	79.5%
White	74.4%	77.7%	81.5%	76.5%	77.7%

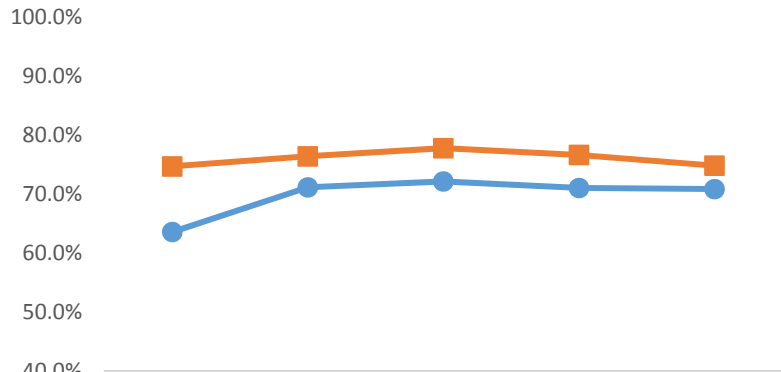
### Course Success Rate by Ethnicity - Ventura College



	2010	2011	2012	2013	2014
Asian	77.6%	78.5%	79.0%	79.9%	78.8%
Black	63.1%	60.5%	59.2%	62.5%	64.3%
Hispanic	66.8%	68.1%	68.5%	69.4%	70.0%
Native Amer	64.8%	70.7%	75.2%	77.5%	79.8%
Pac Island	69.4%	70.2%	73.8%	70.3%	62.1%
Two or More	69.8%	71.6%	72.8%	74.5%	75.7%
Unknown	70.3%	70.1%	73.3%	73.8%	74.0%
White	73.4%	74.8%	75.5%	76.2%	78.0%

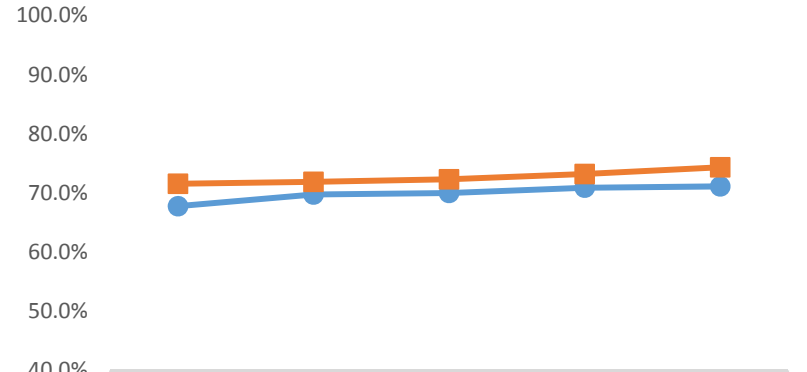
\*Ethnicity data only displayed for cells with 10 or more students

### Course Success Rate by Gender - Art



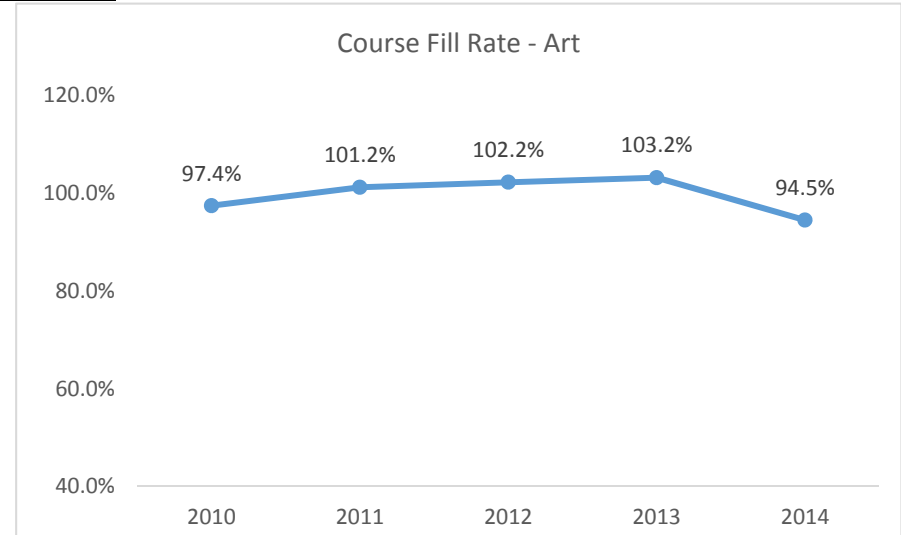
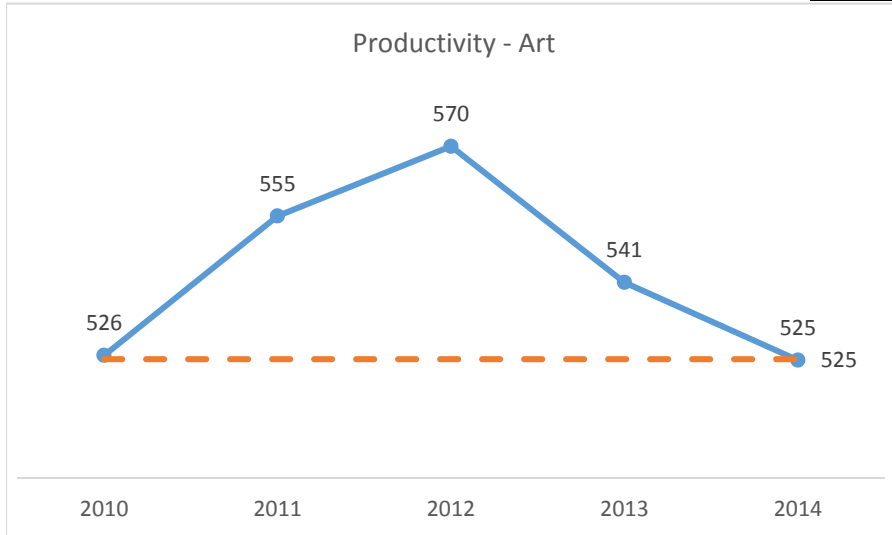
	2010	2011	2012	2013	2014
Male	63.6%	71.1%	72.1%	71.0%	70.8%
Female	74.7%	76.4%	77.8%	76.6%	74.8%

### Course Success Rate by Gender - Ventura College



	2010	2011	2012	2013	2014
Male	67.8%	69.8%	70.0%	70.9%	71.1%
Female	71.6%	71.9%	72.3%	73.2%	74.3%

## Art

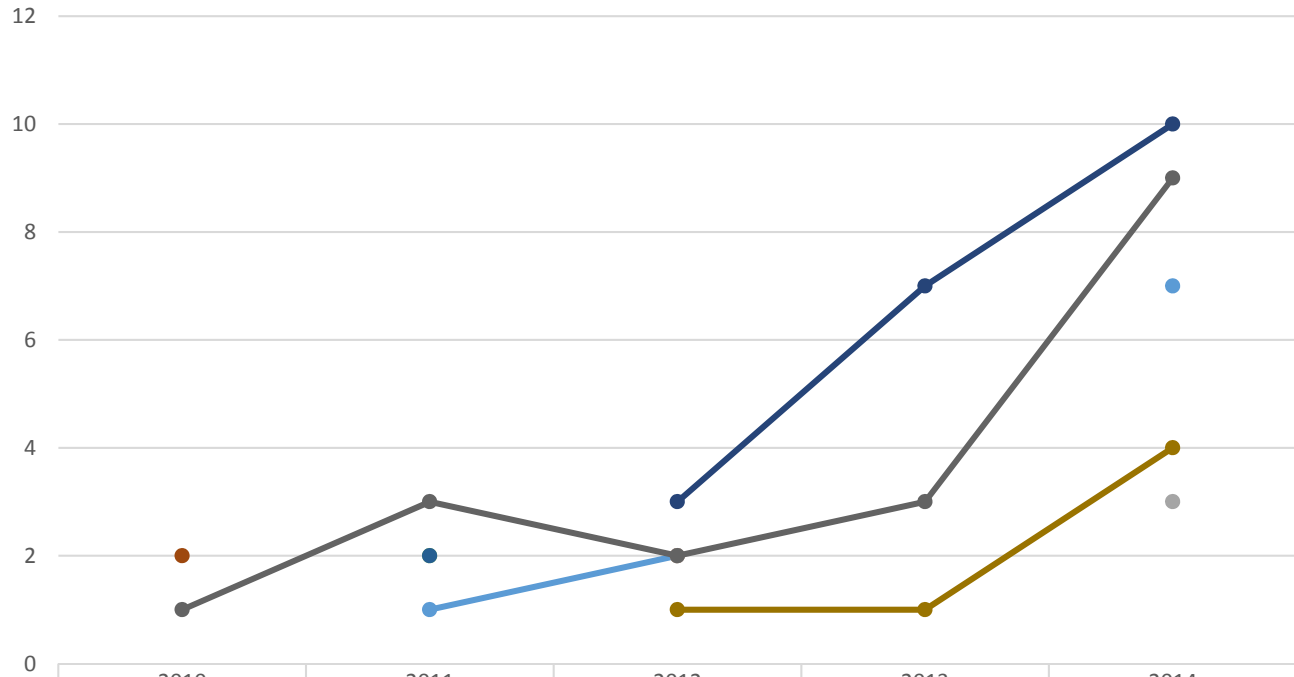
Section C - Productivity

# 2015-2016 Program Review Datasheet

## Art

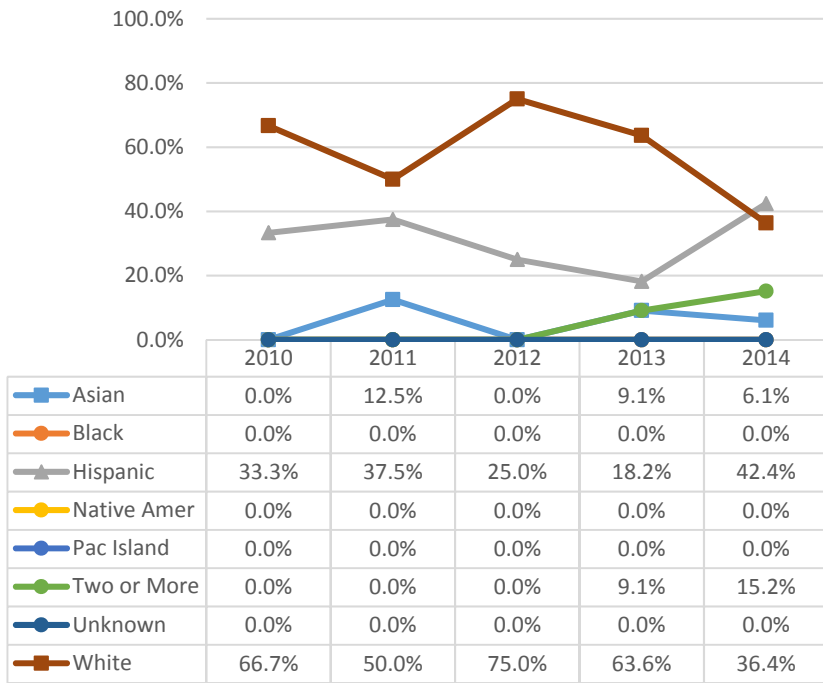
### Section D - Degrees and Certificates Awarded

Awards - Art



	2010	2011	2012	2013	2014
Art Fine Arts Associate in Arts		1	2		7
Art Fine Arts Certificate/30 - 59.5 units			2		
Art History for CSU Transfer Associate in Arts for Transfer			2		3
Ceramics Associate in Arts					
Ceramics Certificate					
Commercial Art Associate in Science		2			
Commercial Art Certificate/30 - 59.5 units		2			
Fine Arts Associate in Arts	2				
Photography Associate in Arts	1	3	2	3	9
Photography Certificate/30 - 59.5 units			1	1	4
Studio Arts CSU Transfer Associate in Arts for Transfer			3	7	10

### Awards by Ethnicity - Art



### Awards by Gender - Art

