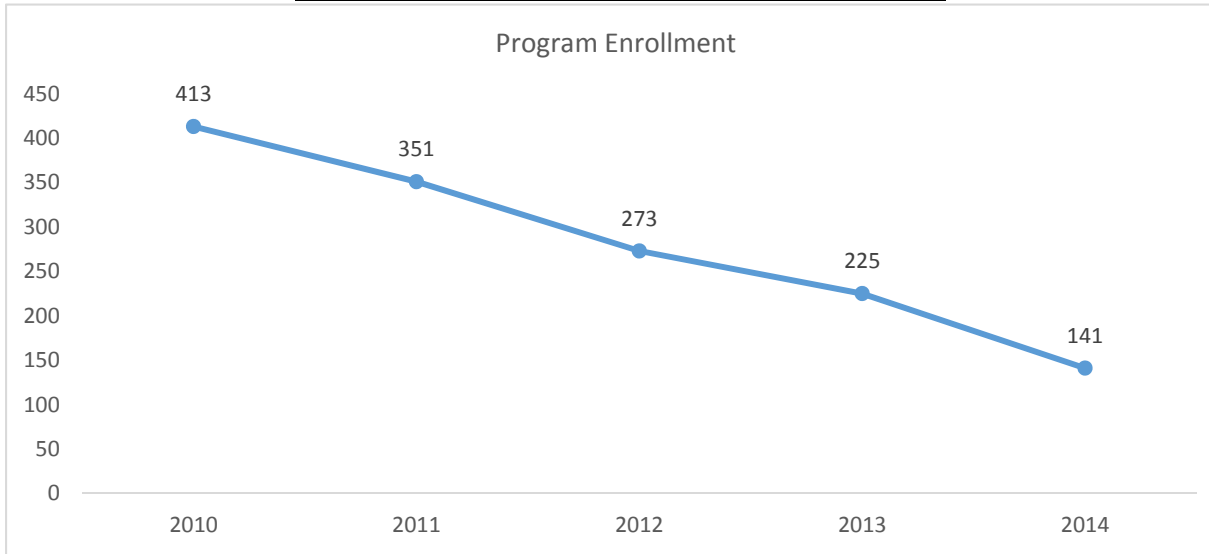
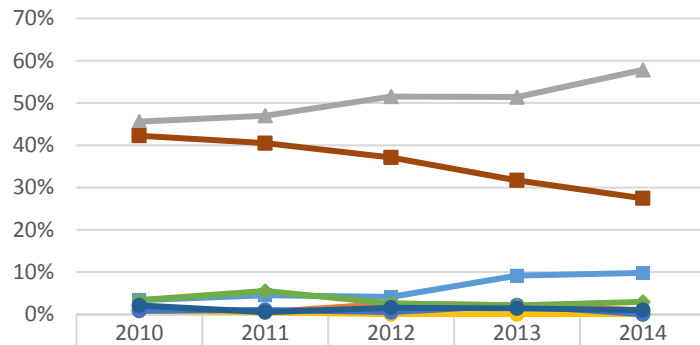


2015-2016 Program Review Datasheet Architecture

Section A - Enrollment and Student Demographics

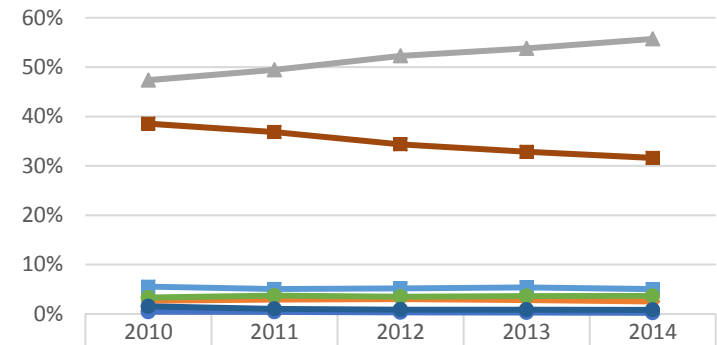


Student Ethnicity - Architecture



Ethnicity	2010	2011	2012	2013	2014
Asian	3.3%	4.5%	4.1%	9.2%	9.8%
Black	1.7%	0.5%	2.6%	2.1%	1.0%
Hispanic	45.6%	47.0%	51.5%	51.4%	57.8%
Native Amer	0.8%	0.5%	0.0%	0.0%	0.0%
Pac Island	0.8%	1.0%	0.5%	2.1%	0.0%
Two or More	3.3%	5.5%	2.6%	2.1%	2.9%
Unknown	2.1%	0.5%	1.5%	1.4%	1.0%
White	42.3%	40.5%	37.1%	31.7%	27.5%

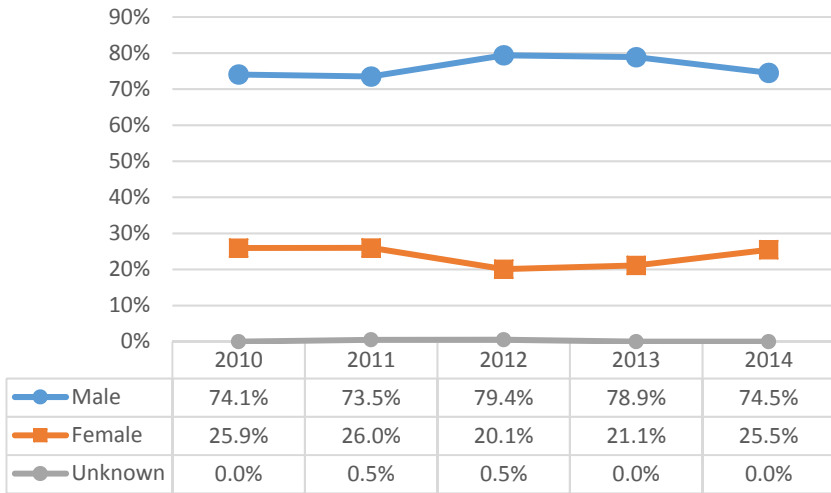
Student Ethnicity - Ventura College



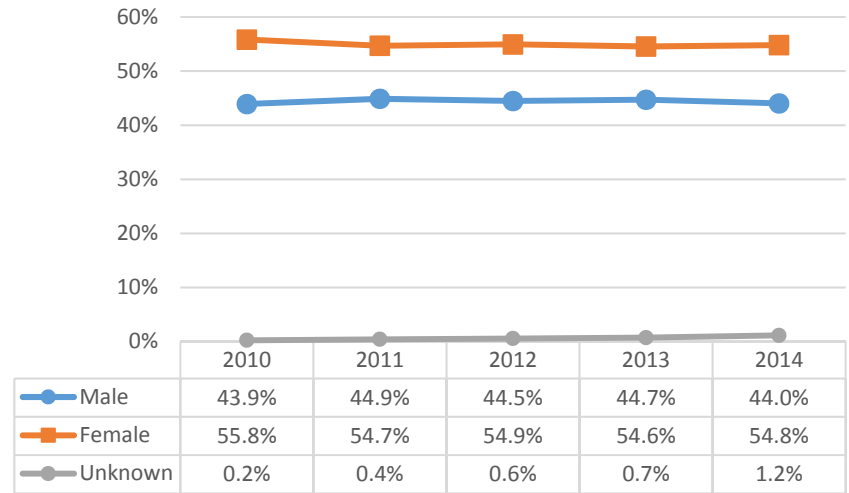
Ethnicity	2010	2011	2012	2013	2014
Asian	5.5%	5.1%	5.2%	5.4%	5.0%
Black	2.7%	2.9%	3.0%	2.8%	2.5%
Hispanic	47.4%	49.4%	52.3%	53.8%	55.7%
Native Amer	0.6%	0.6%	0.5%	0.4%	0.4%
Pac Island	0.4%	0.4%	0.3%	0.3%	0.2%
Two or More	3.3%	3.7%	3.5%	3.6%	3.6%
Unknown	1.5%	1.0%	0.9%	0.9%	0.8%
White	38.5%	36.8%	34.4%	32.8%	31.6%

2015-2016 Program Review Datasheet Architecture

Student Gender - Architecture

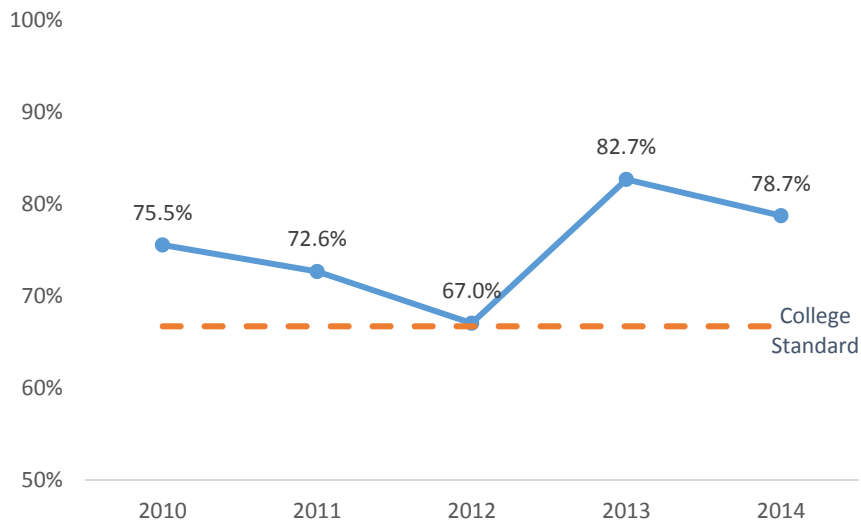


Student Gender - Ventura College

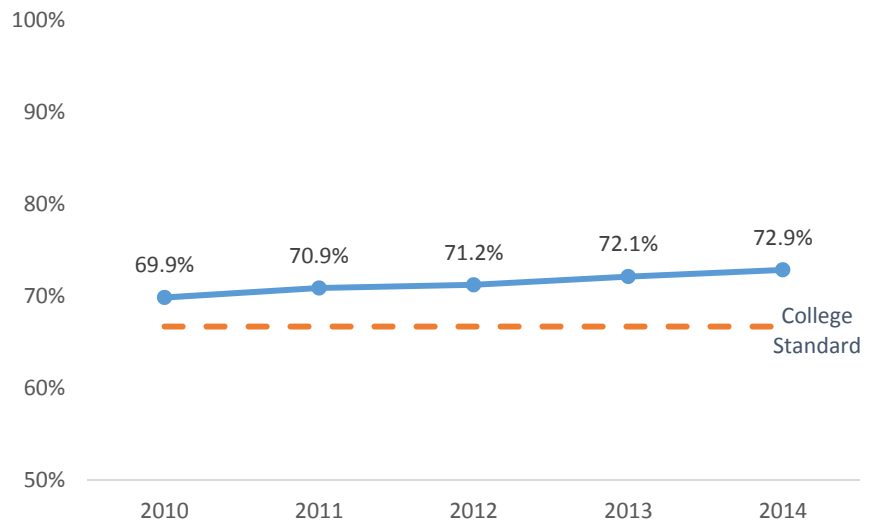


Section B - Course Success Rate

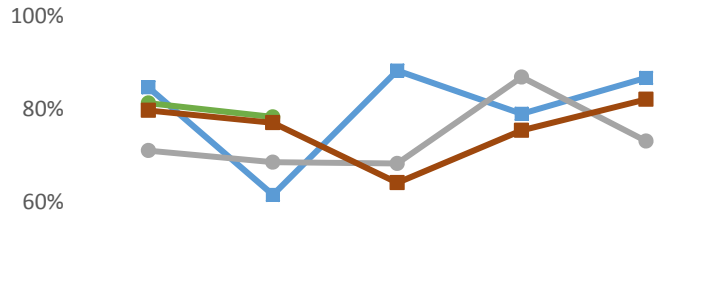
Course Success Rate - Architecture



Course Success Rate - Ventura College

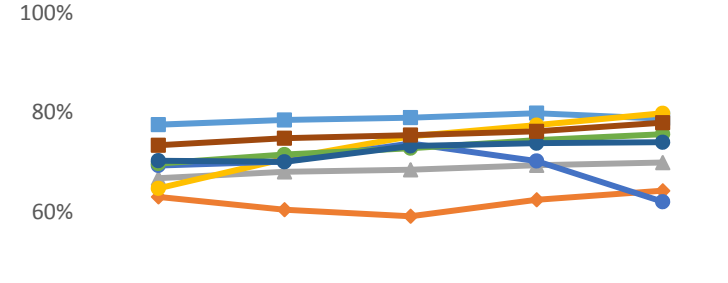


Course Success Rate by Ethnicity - Architecture*



	2010	2011	2012	2013	2014
Asian	84.6%	61.5%	88.2%	78.9%	86.7%
Black					
Hispanic	71.0%	68.6%	68.3%	86.8%	73.1%
Native Amer					
Pac Island					
Two or More	81.3%	78.3%			
Unknown					
White	79.7%	77.0%	64.1%	75.4%	82.1%

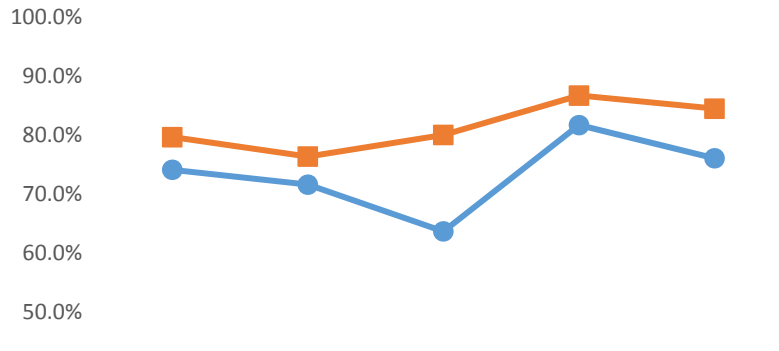
Course Success Rate by Ethnicity - Ventura College



	2010	2011	2012	2013	2014
Asian	77.6%	78.5%	79.0%	79.9%	78.8%
Black	63.1%	60.5%	59.2%	62.5%	64.3%
Hispanic	66.8%	68.1%	68.5%	69.4%	70.0%
Native Amer	64.8%	70.7%	75.2%	77.5%	79.8%
Pac Island	69.4%	70.2%	73.8%	70.3%	62.1%
Two or More	69.8%	71.6%	72.8%	74.5%	75.7%
Unknown	70.3%	70.1%	73.3%	73.8%	74.0%
White	73.4%	74.8%	75.5%	76.2%	78.0%

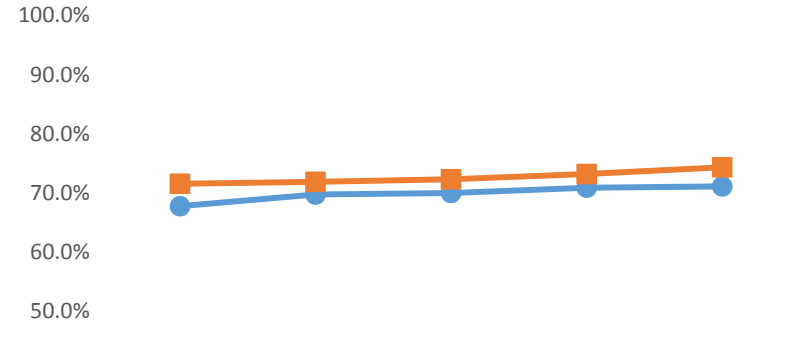
*Ethnicity data only displayed for cells with 10 or more students

Course Success Rate by Gender - Architecture



	2010	2011	2012	2013	2014
Male	74.1%	71.6%	63.7%	81.7%	76.0%
Female	79.6%	76.3%	80.0%	86.7%	84.4%

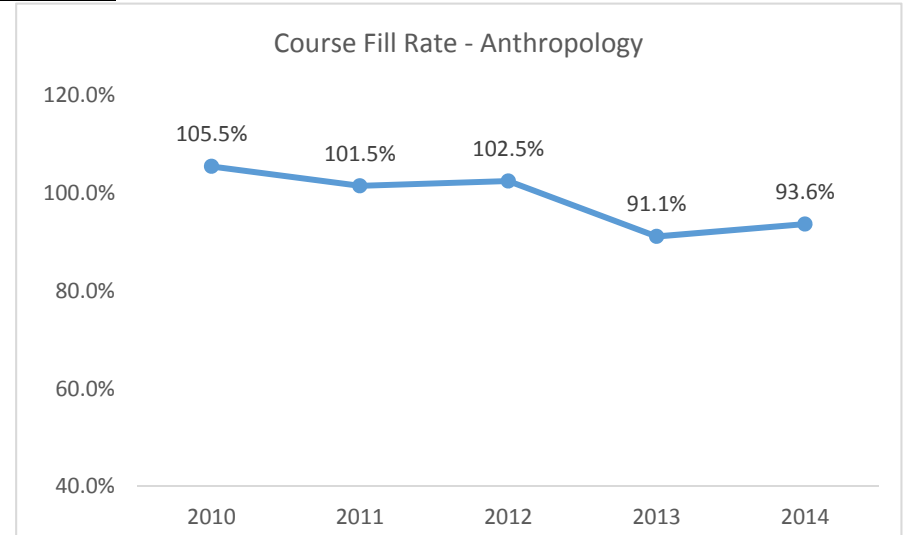
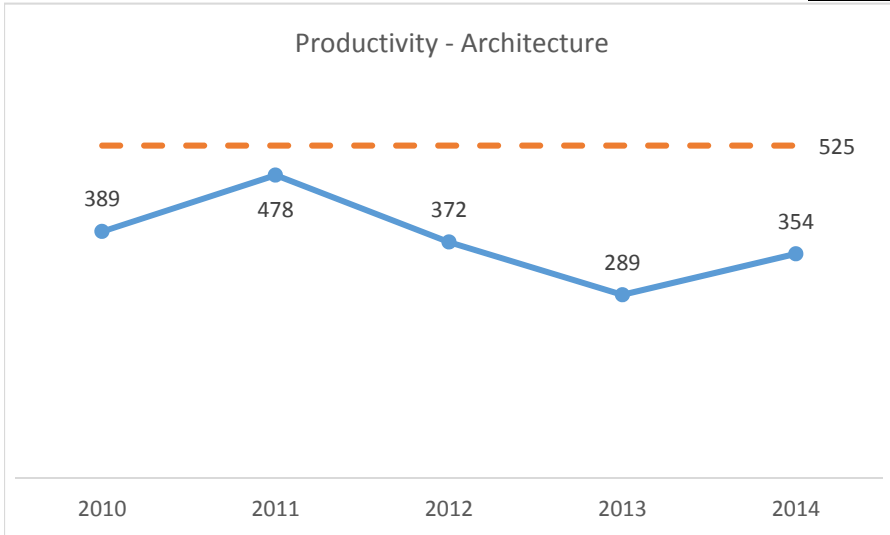
Course Success Rate by Gender - Ventura College



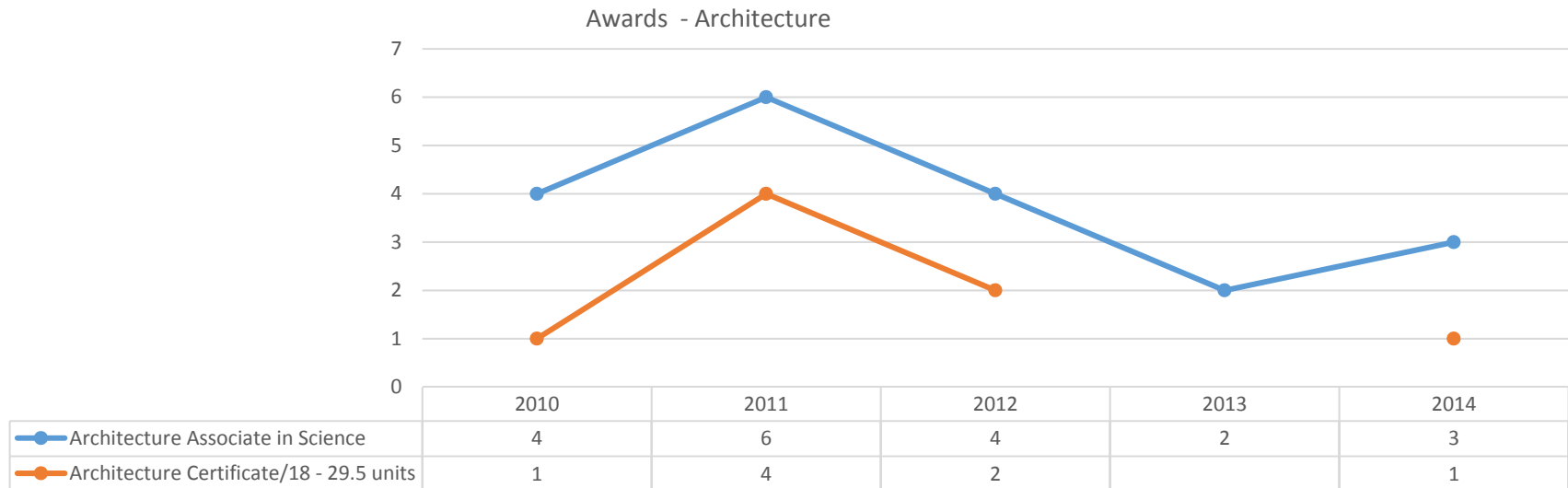
	2010	2011	2012	2013	2014
Male	67.8%	69.8%	70.0%	70.9%	71.1%
Female	71.6%	71.9%	72.3%	73.2%	74.3%

Architecture

Section C - Productivity

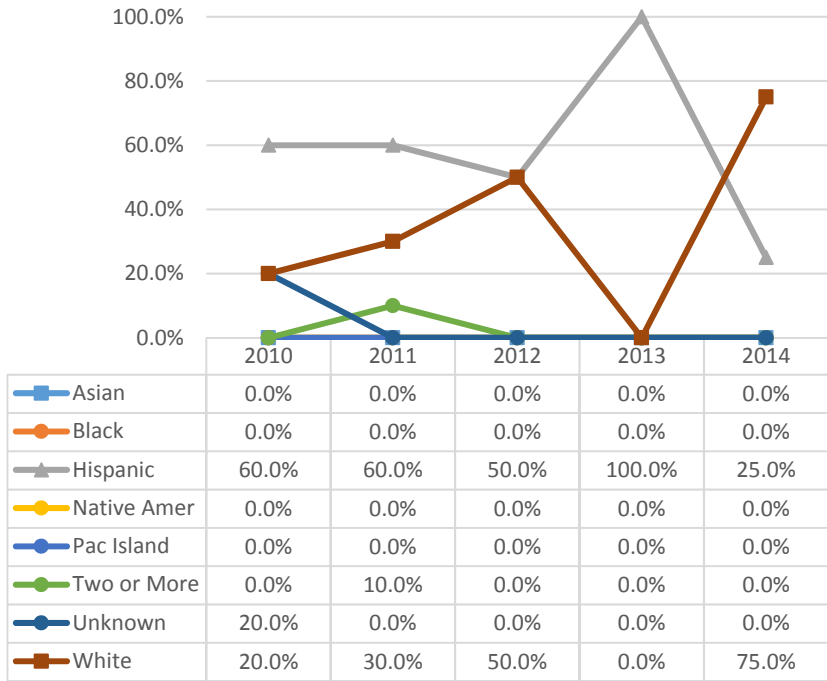


Section D - Degrees and Certificates Awarded



2015-2016 Program Review Datasheet Architecture

Awards by Ethnicity - Architecture



Awards by Gender - Architecture

