

III. ANNUAL ENROLLMENT TRENDS

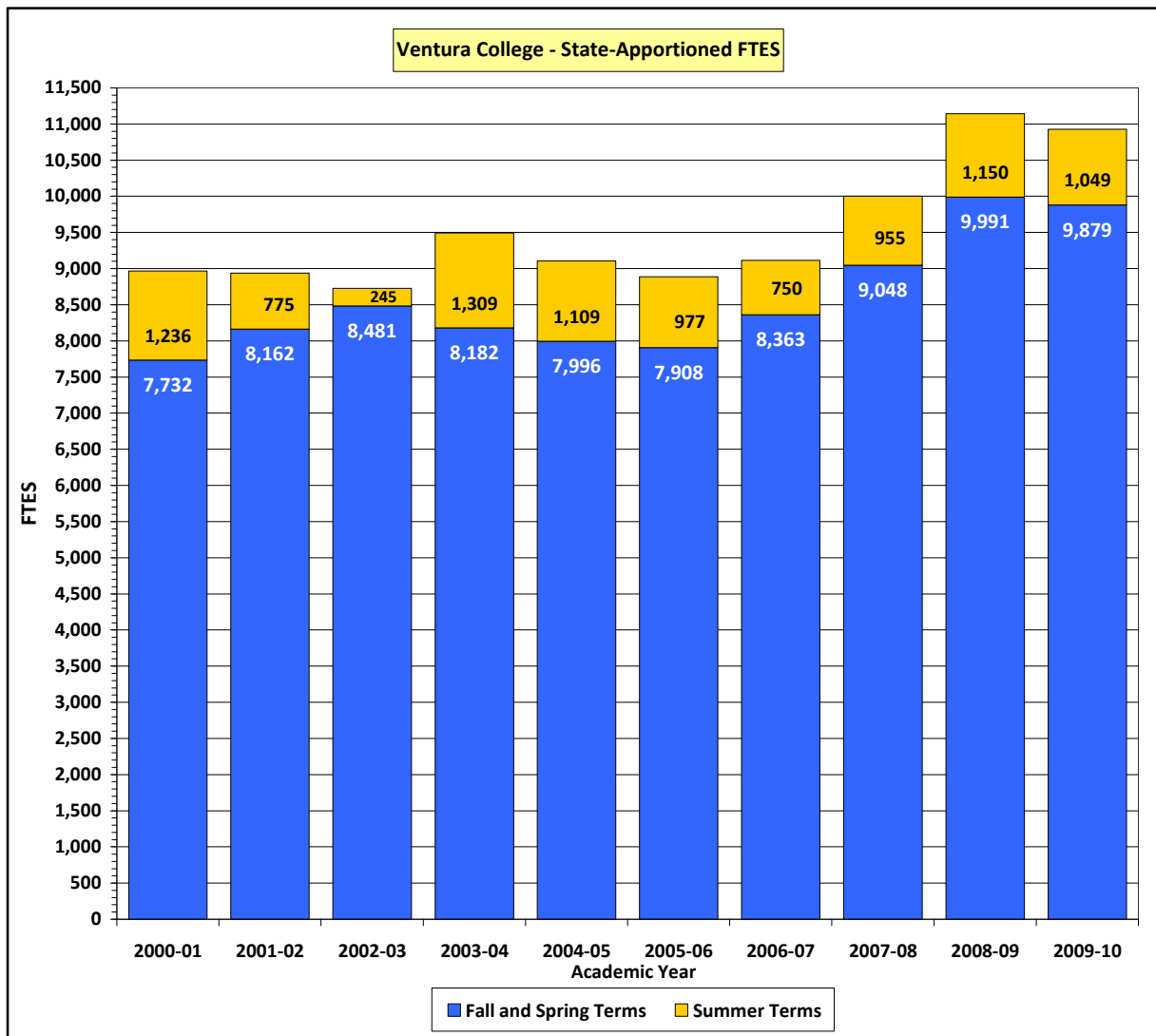
Table of Contents

<u>ITEM</u>	<u>PAGE</u>
A. FTES Enrollments	1
B. Headcount Enrollments	2
1. Overall Headcount	
2. Gender	
3. Race/Ethnicity	
4. Hispanic Students by Gender	
5. Age Group	
C. Course Enrollments	9
1. Overall Course Enrollments	
2. Enrollments by Course Modality	
3. Outcomes by Course Modality	

III. ANNUAL ENROLLMENT TRENDS

A. FTES Enrollments

The FTES (Full-Time Equivalent Student) data presented on this page reflect FTES for which the VCCCD received apportionment funding from the State of California. Between 2000–2001 and 2006–2007, FTES generated by Ventura College was in the 9,000 range. In academic year 2007–2008, VC exceeded 10,000 FTES and became a medium-size college. In AY 2011–2012, the college plans to serve 10,047 FTES and in AY 2012–2013 to serve 9,850 FTES (exceeding the medium-size college minimum of 9,380 FTES).



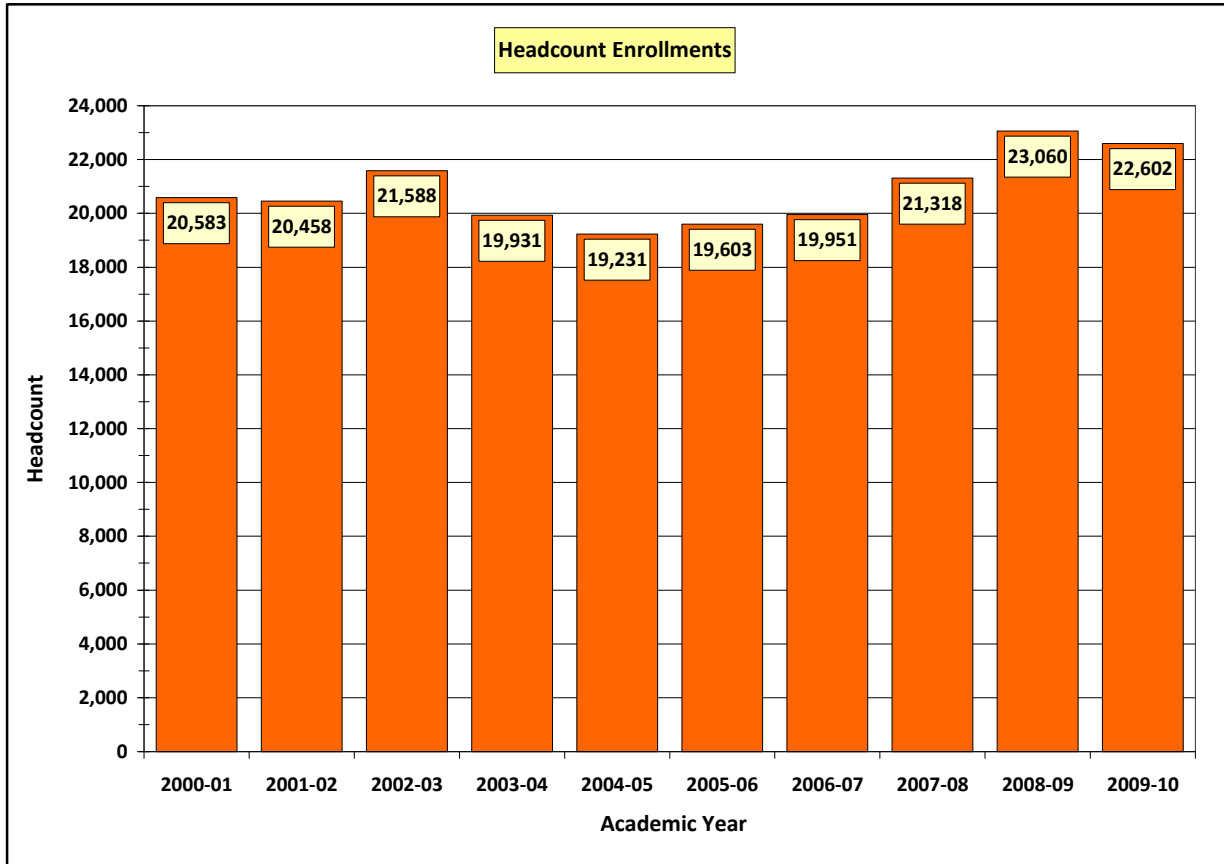
Ventura College FTES Academic Years Ending: 2001 through 2010										
Category	Academic Year Ending									
	2001	2002	2003	2004	2005	2006	2007	2008	2009	2010
Fall and Spring	7,732	8,162	8,481	8,182	7,996	7,908	8,363	9,048	9,991	9,879
Summer	1,236	775	245	1,309	1,109	977	750	955	1,150	1,049
Total FTES	8,968	8,937	8,726	9,491	9,105	8,885	9,113	10,003	11,141	10,928
Δ from Prev. Yr	----	-31	-211	+765	-386	-220	+228	+890	+1,138	-213
Δ Percentage	----	-0.3%	-2.4%	+8.8%	-4.1%	-2.4%	+2.6%	+9.8%	+11.4%	-1.9%

Source: VCCCD – Business and Administrative Services: CCFS-320, Annual Attendance Reports

III. ANNUAL ENROLLMENT TRENDS

B-1. Overall Headcount

In future years, the college expects headcount enrollments to decrease due to fewer course offerings and the probability of additional cuts in state funding. As mentioned in the previous sub-section (A. FTES Enrollments), the college is reducing its FTES workload from 10,928 in 2009–2010 to 9,850 in 2012–2013. Headcount enrollments will likely decrease at a faster rate than FTES since a reduction in course offerings will disproportionately affect the occasional student (3 or less units per term) than it will the full-time (12 units) or 3/4-time (9 units) student. It is expected that high-demand courses that are transfer-level, degree-applicable, or certificate-applicable will continued to be offered on a regularly scheduled basis.



Ventura College Headcount Enrollments Academic Years: 2000–2001 through 2009–2010										
Category	Academic Year Ending									
	2001	2002	2003	2004	2005	2006	2007	2008	2009	2010
Headcount	20,583	20,458	21,588	19,931	19,231	19,603	19,951	21,318	23,060	22,602
Δ from Prev. Yr	----	-125	+1,130	-1,657	-700	+372	+348	+1,367	1,742	-451
Δ Percentage	----	-0.6%	+5.5%	-7.7%	-3.5%	+1.9%	+1.8%	+6.8%	+8.2%	-1.9%

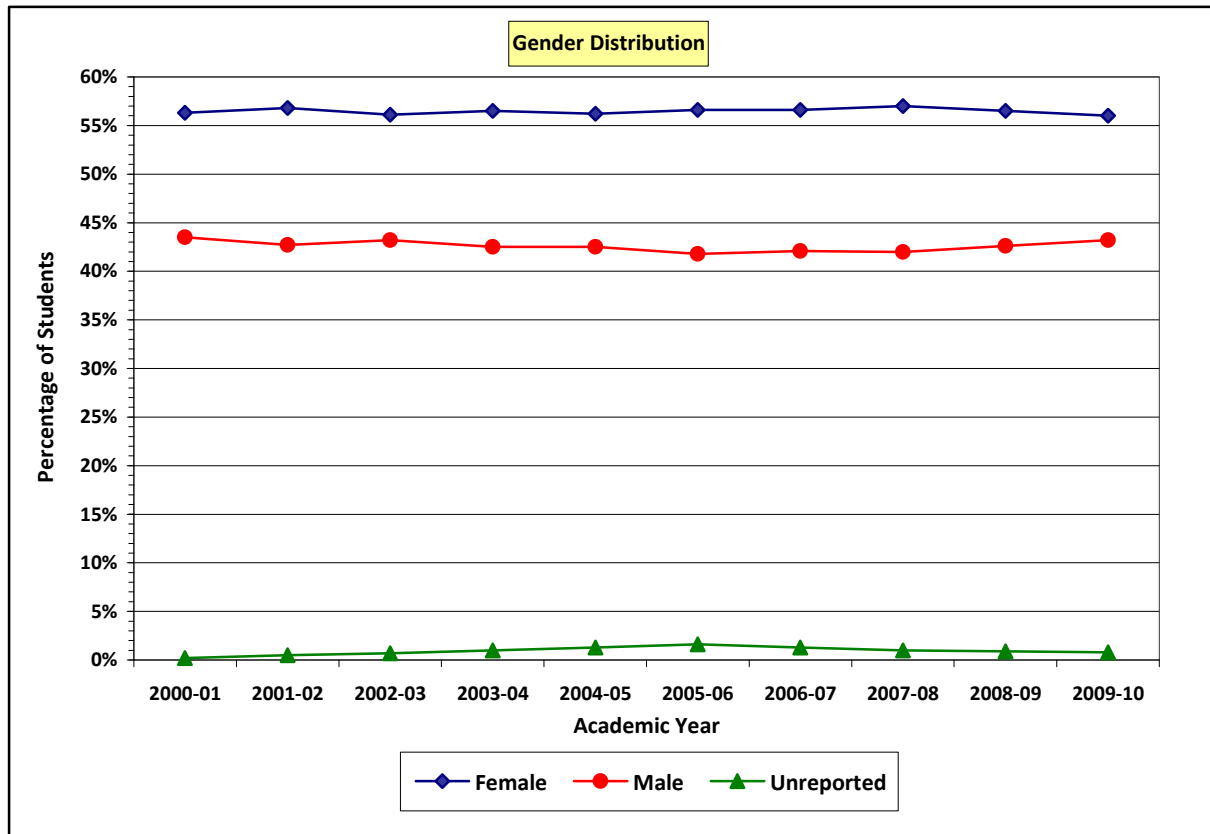
Source: California Community Colleges Chancellor’s Office: Data Mart, Student Demographics – Annual, Query by College/Statewide
 Students who meet the full-term reporting criteria in at least one of the terms during an academic year are included in this query. The full-term reporting criterion is defined as Student-Headcount-Status (STD7) of:
 A (Credit student enrolled in Weekly / Daily Census section),
 B (Credit student enrolled in Positive Attendance section with 8 or more hours or 0.5 or more units earned),
 C (Credit student enrolled in Independent Study section with 0.5 or more units earned), or
 F (Noncredit student enrolled in Positive Attendance section with 8 or more hours).

Web Link: https://misweb.cccco.edu/mis/onlinestat/studdemo_annual_college.cfm

III. ANNUAL ENROLLMENT TRENDS

B-2. Gender

Over the past decade, the proportion of female students at Ventura College has remained steady at 56%, while the male proportion has been at or close to 43% (the remaining 1% is composed students who did not report their gender). In 2009–2010, the statewide proportions were 54% female, 45% male, and 1% unreported. The percentage of female students at VC in 2009–2010 was slightly higher (2 points) than the statewide average and the percentage of male students was 2 points lower than their statewide average.



Ventura College Students by Gender Academic Years: 2000–2001 through 2009–2010										
Gender	Academic Year Ending									
	2001	2002	2003	2004	2005	2006	2007	2008	2009	2010
Female	11,577	11,628	12,107	11,270	10,804	11,104	11,290	12,140	13,031	12,655
Male	8,955	8,727	9,323	8,460	8,180	8,195	8,402	8,958	9,813	9,754
Unreported	51	103	158	201	247	304	259	220	216	193
Total Count	20,583	20,458	21,588	19,931	19,231	19,603	19,951	21,318	23,060	22,602
Gender	Academic Year Ending									
	2001	2002	2003	2004	2005	2006	2007	2008	2009	2010
Female	56.3%	56.8%	56.1%	56.5%	56.2%	56.6%	56.6%	57.0%	56.5%	56.0%
Male	43.5%	42.7%	43.2%	42.5%	42.5%	41.8%	42.1%	42.0%	42.6%	43.2%
Unreported	0.2%	0.5%	0.7%	1.0%	1.3%	1.6%	1.3%	1.0%	0.9%	0.8%
Total Percent	100.0%	100.0%	100.0%	100.0%	100.0%	100.0%	100.0%	100.0%	100.0%	100.0%

Source: California Community Colleges Chancellor's Office: Data Mart, Student Demographics – Annual, Query by College/Statewide
 Web Link: https://misweb.cccco.edu/mis/onlinestat/studdemo_annual_college.cfm

III. ANNUAL ENROLLMENT TRENDS

B-3. Race/Ethnicity – Data Tables

In 2008–2009, the number of Hispanic/Latino students at Ventura College surpassed the number of White students, resulting in Hispanics becoming the largest racial/ethnic group at the college. In 2009–2010, the proportion of Hispanic students at VC was **45.2%** compared to 39.8% for White students. As of the 2010 U.S. Census, the percentage of Hispanics residing in the college’s **service area** was **42.7%**, which is 2.5 percentage points **lower** than Hispanic student enrollment at Ventura College in 2009–2010.

Population percentages for Ventura College’s service area and for all of Ventura County are presented in the data table below. The Census Bureau reports population data by two characteristics: **Ethnicity** (Hispanic/Latino **or** Non-Hispanic/Non-Latino) and **Race** (the percentages by city or area total 100.0%).

U. S. Census 2010										
City or Area	Total Pop.	Ethnicity		Population by Race						
		Latino	Not Lat.	Asian	Black	Nat Am	Pac Isl	2/More	Other	White
Fillmore	19,488	74.1%	25.9%	0.9%	0.5%	1.4%	0.1%	5.3%	34.7%	57.1%
Santa Paula	32,060	77.7%	22.3%	0.7%	0.5%	1.6%	0.1%	3.8%	29.8%	63.5%
Ojai Valley	27,784	20.9%	79.1%	1.6%	0.6%	1.0%	0.0%	3.2%	8.2%	85.4%
Ventura	111,889	32.6%	67.4%	3.3%	1.6%	1.2%	0.2%	5.2%	12.2%	76.3%
VC Area	191,221	42.7%	57.3%	2.4%	1.2%	1.3%	0.1%	4.7%	16.8%	73.5%
Ven. Cnty	823,318	40.3%	59.7%	6.7%	1.9%	1.0%	0.2%	4.5%	17.0%	68.7%

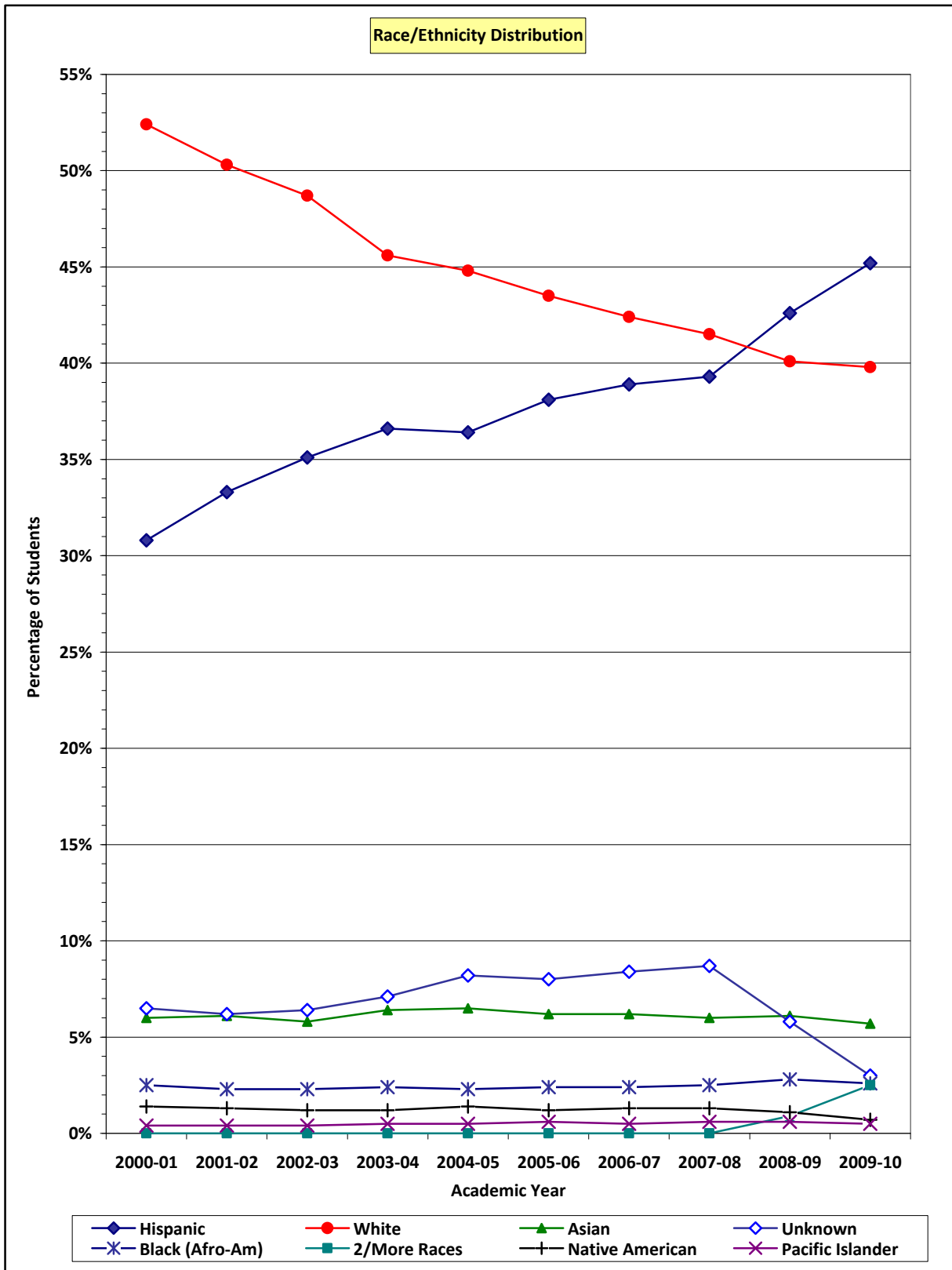
Ventura College Students by Race/Ethnicity Academic Years: 2000–2001 through 2009–2010										
Race or Ethnicity	Academic Year Ending									
	2001	2002	2003	2004	2005	2006	2007	2008	2009	2010
Asian	1,225	1,250	1,260	1,283	1,246	1,222	1,229	1,293	1,405	1,279
Black (Afro-Am)	523	478	488	487	449	463	480	537	651	587
Hispanic	6,340	6,819	7,581	7,304	6,993	7,467	7,767	8,388	9,834	10,211
Native Amer.	292	264	262	245	263	240	251	273	254	155
Pacific Islander	83	86	83	93	92	109	107	125	130	110
2/More Races	0	0	0	0	0	0	0	0	214	576
White	10,788	10,299	10,523	9,096	8,615	8,526	8,450	8,841	9,241	9,003
Unknown	1,332	1,262	1,391	1,423	1,573	1,576	1,667	1,861	1,331	681
Total Count	20,583	20,458	21,588	19,931	19,231	19,603	19,951	21,318	23,060	22,602
Race or Ethnicity	Academic Year Ending									
	2001	2002	2003	2004	2005	2006	2007	2008	2009	2010
Asian	6.0%	6.1%	5.8%	6.4%	6.5%	6.2%	6.2%	6.0%	6.1%	5.7%
Black (Afro-Am)	2.5%	2.3%	2.3%	2.4%	2.3%	2.4%	2.4%	2.5%	2.8%	2.6%
Hispanic	30.8%	33.3%	35.1%	36.6%	36.4%	38.1%	38.9%	39.3%	42.6%	45.2%
Native Amer.	1.4%	1.3%	1.2%	1.2%	1.4%	1.2%	1.3%	1.3%	1.1%	0.7%
Pacific Islander	0.4%	0.4%	0.4%	0.5%	0.5%	0.6%	0.5%	0.6%	0.6%	0.5%
2/More Races	0.0%	0.0%	0.0%	0.0%	0.0%	0.0%	0.0%	0.0%	0.9%	2.5%
White	52.4%	50.3%	48.7%	45.6%	44.8%	43.5%	42.4%	41.5%	40.1%	39.8%
Unknown	6.5%	6.2%	6.4%	7.1%	8.2%	8.0%	8.4%	8.7%	5.8%	3.0%
Total Percent	100.0%	100.0%	100.0%	100.0%	100.0%	100.0%	100.0%	100.0%	100.0%	100.0%

Source: California Community Colleges Chancellor’s Office: Data Mart, Student Demographics – Annual, Query by College/Statewide
 Web Link: https://misweb.cccco.edu/mis/onlinestat/studdemo_annual_college.cfm

Note: In fall 2009, new race and ethnicity data collection procedures were mandated by the US Department of Education. The new procedures include the option of selecting multiple ethnicities, which are reported in the table above as 2/More Races. Only new students to the VCCCD (since fall 2009) have had the opportunity to select multiple races. Continuing students, however, have the ability to update their race/ethnicity via the Student Portal.

III. ANNUAL ENROLLMENT TRENDS

B-3. Race/Ethnicity – Chart

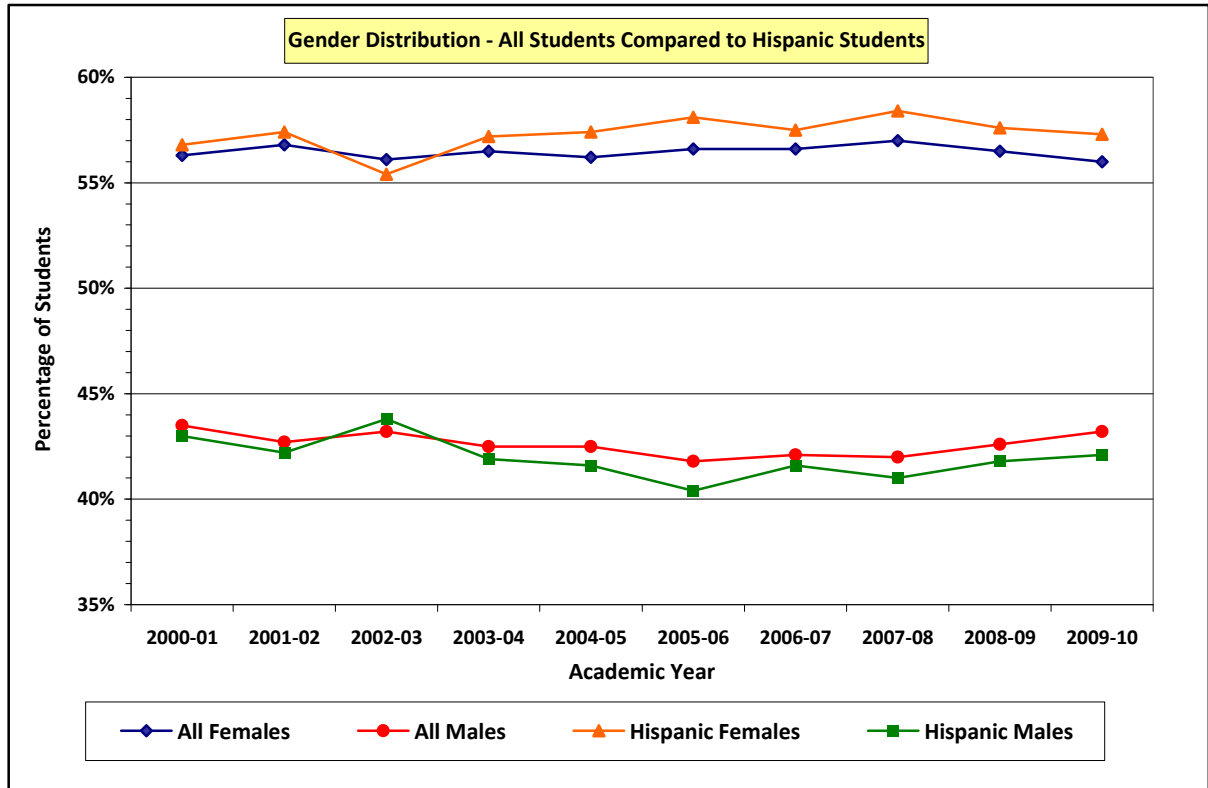


III. ANNUAL ENROLLMENT TRENDS

B-4. Hispanic Students by Gender

Over the last decade, the distribution of Hispanic students by gender has been similar to the gender distribution for all students at Ventura College. Generally, the percentage of Hispanic students who were female was **one** percentage point **higher** than it was for the entire student body, and the percentage Hispanic students who were male was **one** percentage point **lower** than it was for the entire student body.

In 2009–2010, **57.3%** of Hispanic students were females compared to **56.0%** for the entire student body. The percentage of Hispanic students that were males was **42.1%** versus **43.2%** for all students.



Ventura College – Hispanic Students										
Academic Years: 2000–2001 through 2009–2010										
Hispanics Gender	Academic Year Ending									
	2001	2002	2003	2004	2005	2006	2007	2008	2009	2010
Female	3,598	3,913	4,202	4,181	4,013	4,340	4,469	4,903	5,663	5,852
Male	2,729	2,876	3,318	3,060	2,910	3,015	3,229	3,437	4,109	4,294
Unreported	13	30	61	63	70	112	69	48	62	65
Total Count	6,340	6,819	7,581	7,304	6,993	7,467	7,767	8,388	9,834	10,211
Hispanics Gender	Academic Year Ending									
	2001	2002	2003	2004	2005	2006	2007	2008	2009	2010
Female	56.8%	57.4%	55.4%	57.2%	57.4%	58.1%	57.5%	58.4%	57.6%	57.3%
Male	43.0%	42.2%	43.8%	41.9%	41.6%	40.4%	41.6%	41.0%	41.8%	42.1%
Unreported	0.2%	0.4%	0.8%	0.9%	1.0%	1.5%	0.9%	0.6%	0.6%	0.6%
Total Percent	100.0%	100.0%	100.0%	100.0%	100.0%	100.0%	100.0%	100.0%	100.0%	100.0%

Source: California Community Colleges Chancellor’s Office: Data Mart, Student Demographics – Annual, Query by College/Statewide
 Web Link: https://misweb.cccco.edu/mis/onlinestat/studdemo_annual_college.cfm

III. ANNUAL ENROLLMENT TRENDS

B-5. Age Group – Data Table

Over the past decade at VC, the percentage distribution of students by Age Group has shown a marked increase in the younger student groups and a decrease in older student groups (see the data table on the **bottom** of this page and the chart on next the page). In the “19 or younger” group, there is a 7 percentage point increase from 2000–2001 to 2009–2010 and in the “20 to 24” group, the increase is 4 percentage points. During this ten-year period, all of the 30-and-over age groups experienced declines in their relative proportions of the Ventura College student body.

In **2009–2010** at VC, the percentage of Hispanics students in the “19 or younger” age group was 40.1% compared to 33.9% for All Other Students (see the table below). Almost **70%** of **Hispanic** students in 2009–2010 were **less than 25** years of age versus **62%** for All Other students.

2009 – 2010 – Hispanic Students Compared to All Other Students					
Age Group (In Years)	Hispanic Students		All Other Students		Difference in Percentages
	Number	Percentage	Number	Percentage	
19 or younger	4,096	40.1%	4,200	33.9%	6.2 % points
20 to 24	3,020	29.6%	3,512	28.3%	1.3 % points
25 to 29	1,168	11.4%	1,334	10.8%	0.6 % points
30 to 39	1,068	10.5%	1,236	10.0%	0.5 % points
40 to 49	567	5.5%	1,029	8.3%	-2.8 % points
50 or older	292	2.9%	1,075	8.7%	-5.8 % points
Unreported	0	---%	5	0.0%	---
Totals	10,211	100.0%	12,391	100.0%	0.0

It is expected that the trend toward increased enrollments of younger students will continue, primarily due to the college’s focus on its core mission: providing transfer, degree and certificate programs.

Ventura College Students by Age Group Academic Years: 2000–2001 through 2009–2010										
Age Group (In Years)	Academic Year Ending									
	2001	2002	2003	2004	2005	2006	2007	2008	2009	2010
19 or younger	6,104	6,035	6,203	5,837	5,932	6,556	6,521	7,212	8,141	8,296
20 to 24	5,108	5,044	5,473	5,520	5,243	5,299	5,455	5,791	6,306	6,532
25 to 29	2,258	2,261	2,452	2,275	2,098	2,074	2,192	2,385	2,627	2,502
30 to 39	3,068	3,022	3,101	2,605	2,450	2,281	2,331	2,461	2,483	2,304
40 to 49	2,459	2,471	2,609	2,171	2,004	1,903	1,852	1,811	1,841	1,596
50 or older	1,570	1,600	1,738	1,515	1,501	1,486	1,592	1,653	1,653	1,367
Unreported	16	25	12	8	3	4	8	5	9	5
Total Count	20,583	20,458	21,588	19,931	19,231	19,603	19,951	21,318	23,060	22,602
Age Group (In Years)	Academic Year Ending									
	2001	2002	2003	2004	2005	2006	2007	2008	2009	2010
19 or younger	29.7%	29.5%	28.7%	29.3%	30.8%	33.4%	32.7%	33.8%	35.3%	36.7%
20 to 24	24.8%	24.7%	25.4%	27.7%	27.3%	27.0%	27.3%	27.2%	27.3%	28.9%
25 to 29	11.0%	11.1%	11.4%	11.4%	10.9%	10.6%	11.0%	11.2%	11.4%	11.1%
30 to 39	14.9%	14.8%	14.4%	13.1%	12.7%	11.6%	11.7%	11.5%	10.8%	10.2%
40 to 49	11.9%	12.1%	12.1%	10.9%	10.4%	9.7%	9.3%	8.5%	8.0%	7.1%
50 or older	7.6%	7.8%	8.1%	7.6%	7.8%	7.6%	8.0%	7.8%	7.2%	6.0%
Unreported	0.1%	0.1%	0.1%	0.0%	0.0%	0.0%	0.0%	0.0%	0.0%	0.0%
Total Percent	100.0%	100.0%	100.0%	100.0%	100.0%	100.0%	100.0%	100.0%	100.0%	100.0%

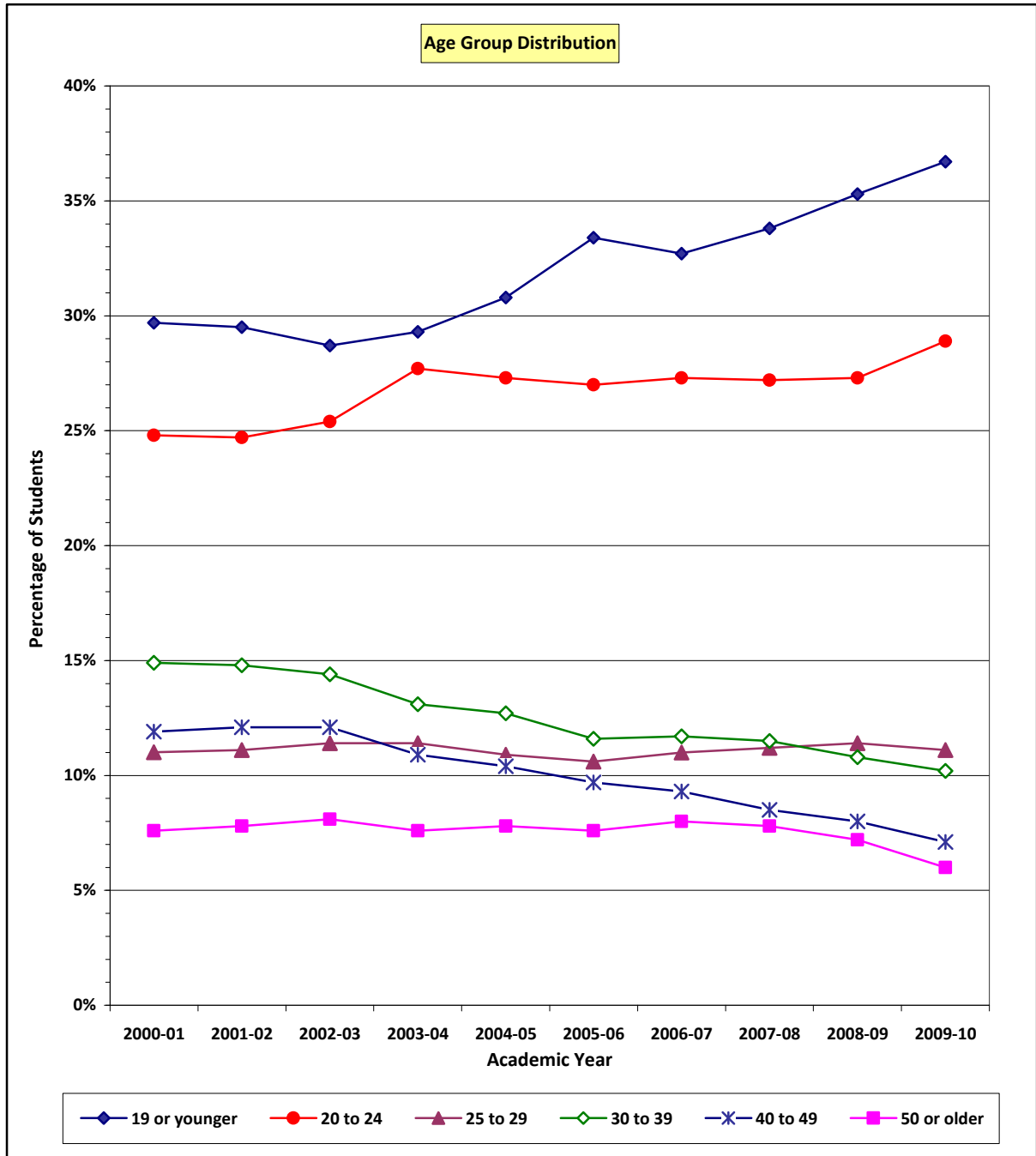
Source: California Community Colleges Chancellor’s Office: Data Mart, Student Demographics – Annual, Query by College/Statewide
 Web Link: https://misweb.cccco.edu/mis/onlinestat/studdemo_annual_college.cfm

III. ANNUAL ENROLLMENT TRENDS

B-5. Age Group – Chart

Over the last decade, the **number** and **percentage** of **younger** students at Ventura College has continued to grow. During the same period, the **number** and **percentage** of **older** students at the college has been declining.

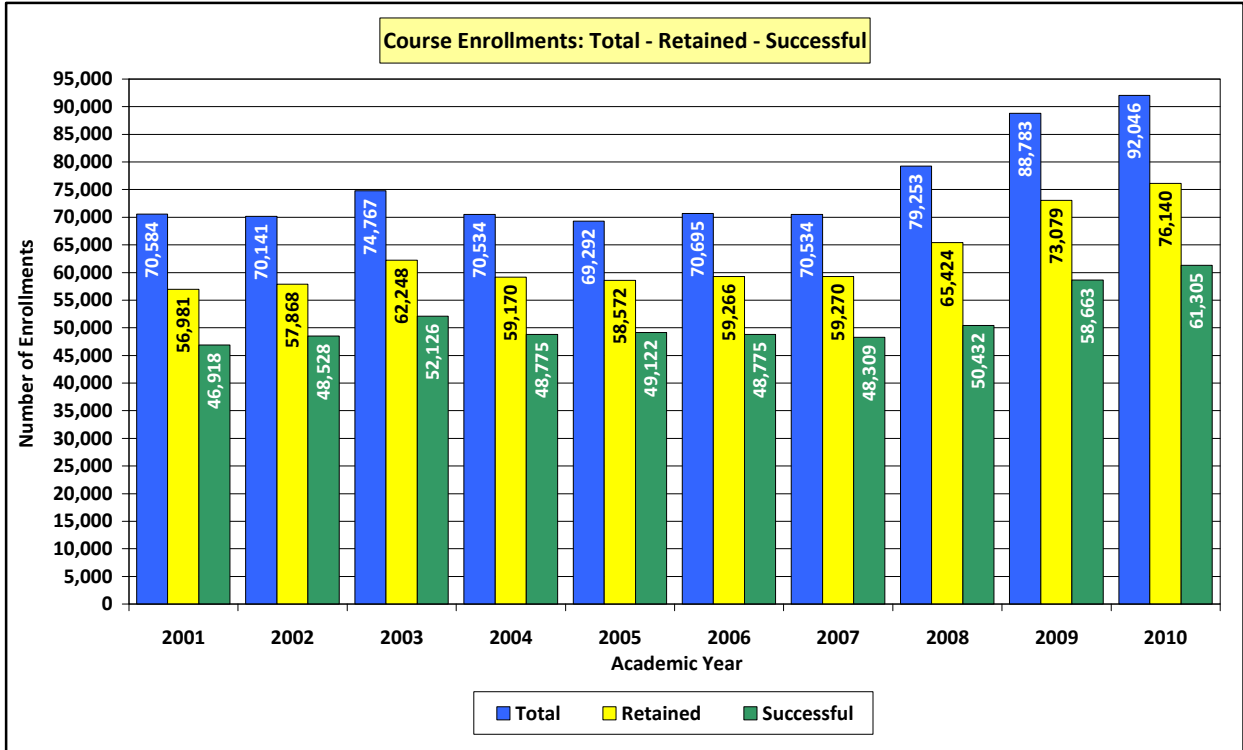
The chart below provides a visual depiction of the trends for students in **six** age groups.



III. ANNUAL ENROLLMENT TRENDS

C-1. Overall Course Enrollments

Credit enrollments at VC have increased over the last four (4) academic years, from 70,534 in 2006–2007 to 92,046 in 2009–2010. Over the ten (10) year period, retention rates have fluctuated between 81% and 84%. Success rates during this ten (10) year period have ranged between 64% and 71%. For the latest academic year (2009–2010), the retention rate was 82.7% and the success rate was 66.6%.



Retention and Success Rates

The denominator in retention and success rate computations is the number of course enrollments with grade notations of A, B, C, D, F, CR, NC, I*, P, NP, DR, and W.

Retention is defined as a grade notation of A, B, C, D, F, CR, NC, I*, P, or NP.

Success is defined as a grade notation of A, B, C, CR, or P.

Enrollments data relate to credit courses for which State Apportionment was claimed (i.e., XB01 was not equal to "O.")

Ventura College – Credit Course Enrollments (Seatcounts)										
Academic Years: 2000–2001 through 2009–2010										
Enrollments / Outcomes	Academic Year Ending									
	2001	2002	2003	2004	2005	2006	2007	2008	2009	2010
Summer	9,587	7,516	9,018	7,211	7,127	8,556	8,946	10,363	12,241	13,176
Fall	30,951	31,424	33,513	32,579	31,481	31,156	31,705	35,029	38,572	39,678
Spring	30,046	31,201	32,236	30,744	30,684	30,983	29,883	33,861	37,970	39,192
Tot. Seatcount	70,584	70,141	74,767	70,534	69,292	70,695	70,534	79,253	88,783	92,046
Retained	56,981	57,868	62,248	59,170	58,572	59,266	59,270	65,424	73,079	76,140
Retain Rate	80.7%	82.5%	83.3%	83.9%	84.5%	83.8%	84.0%	82.6%	82.3%	82.7%
Succeeded	46,918	48,528	52,126	48,775	49,122	48,775	48,309	50,432	58,663	61,305
Success Rate	66.5%	69.2%	69.7%	69.2%	70.9%	69.0%	68.5%	63.6%	66.1%	66.6%

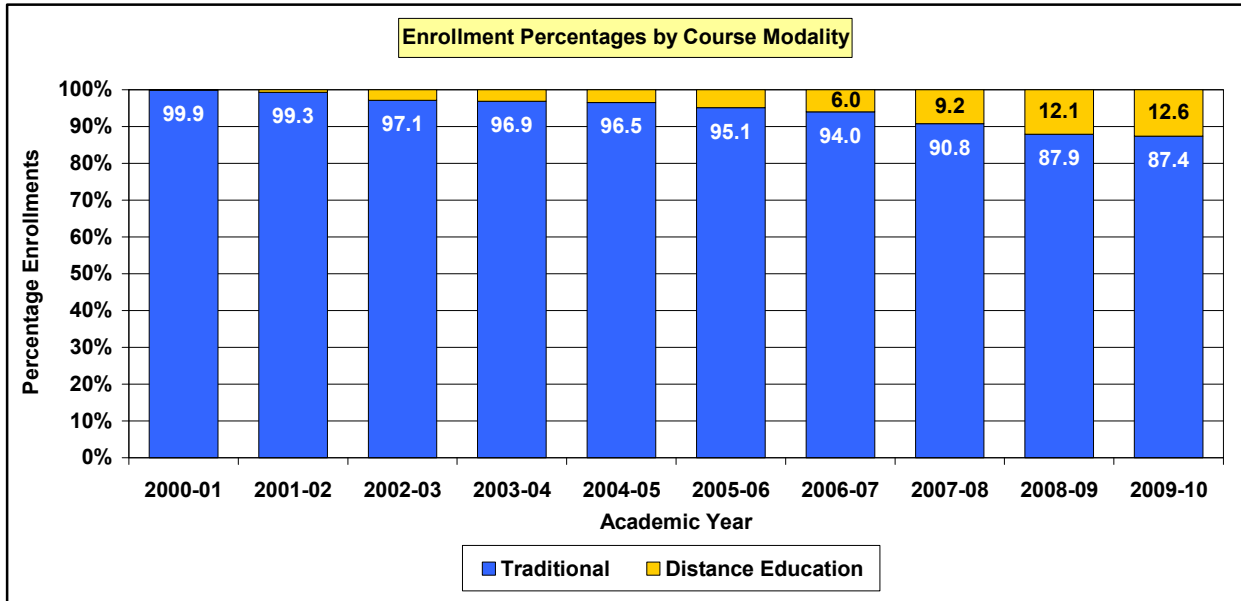
Source: California Community Colleges Chancellor's Office: Data Mart, Program Retention/Success Rates – By Distance Education Status; Query by College/Statewide

Web Link: https://misweb.cccco.edu/mis/onlinestat/ret_sucs_de.cfm

III. ANNUAL ENROLLMENT TRENDS

C-2. Enrollments by Course Modality

During the decade, enrollments in distance education (DE) classes at VC have grown from **94** in 2000–2001 to **11,568** in 2009–2010. Accompanying these increases in distance education enrollments has been an expansion of the college’s course and section offerings in DE. In 2009–2010, VC offered **204** DE sections. As DE offerings have increased, enrollment percentages in traditional courses have declined. In 2009–2010, enrollments in traditional classes accounted for **87.4%** of all course enrollments versus **99.9%** in 2000–2001.



Ventura College										
Distance Education: Credit Class Enrollments (Seatcounts)										
Term Enrollments	Academic Year Ending									
	2001	2002	2003	2004	2005	2006	2007	2008	2009	2010
Summer	0	0	238	235	291	364	662	1,378	2,198	2,683
Fall	94	119	1,018	990	1,011	1,430	1,736	2,778	3,996	4,477
Spring	0	403	929	929	1,127	1,640	1,840	3,151	4,531	4,408
D/E Seatcount	94	522	2,185	2,154	2,429	3,434	4,238	7,307	10,725	11,568
Tot. Seatcount	70,584	70,141	74,767	70,534	69,292	70,695	70,534	79,253	88,783	92,046
D/E Percent	0.1%	0.7%	2.9%	3.1%	3.5%	4.9%	6.0%	9.2%	12.1%	12.6%
Traditional Classes: Credit Enrollments (Seatcounts)										
Term Enrollments	Academic Year Ending									
	2001	2002	2003	2004	2005	2006	2007	2008	2009	2010
Summer	9,587	7,516	8,780	6,976	6,836	8,192	8,284	8,985	10,043	10,493
Fall	30,857	31,305	32,495	31,589	30,470	29,726	29,969	32,251	34,576	35,201
Spring	30,046	30,798	31,307	29,815	29,557	29,343	28,043	30,710	33,439	34,784
Trad. Seatcnt	70,490	69,619	72,582	68,380	66,863	67,261	66,296	71,946	78,058	80,478
Tot. Seatcount	70,584	70,141	74,767	70,534	69,292	70,695	70,534	79,253	88,783	92,046
Trad. Percent	99.9%	99.3%	97.1%	96.9%	96.5%	95.1%	94.0%	90.8%	87.9%	87.4%

Source: California Community Colleges Chancellor's Office: Data Mart, Program Retention/Success Rates – By Distance Education Status; Query by College/Statewide

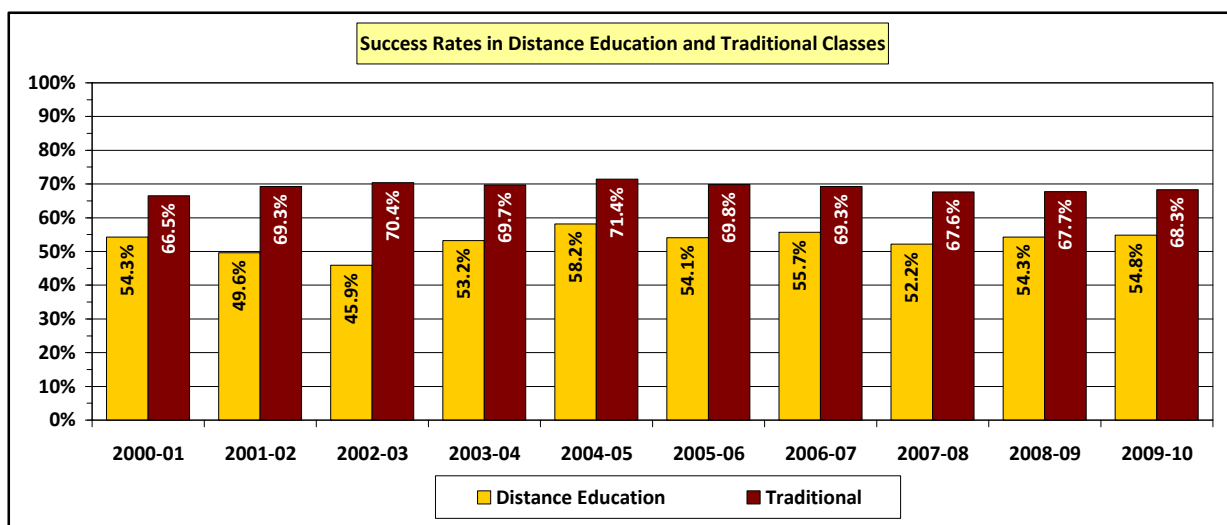
Web Link: https://misweb.cccco.edu/mis/onlinestat/ret_sucs_de.cfm

III. ANNUAL ENROLLMENT TRENDS

C-3. Outcomes by Course Modality

Since 2005–2006, success rates in DE courses at VC are about **13.5** percentage points **lower** than in **all** other courses (i.e., courses delivered in a traditional modality). Through a new (2010) Title V Cooperative Grant, Ventura College is creating initiatives to address the lower success rates in DE courses. A Summer Institute (as part of the grant’s Professional Development component) was conducted to provide instructors with the latest strategies and pedagogies for increasing success rates in DE classes. Additionally, a distance education orientation has been created to assist new DE students familiarize themselves with the computer technology, software, and procedures associated with classes offered via a distance education modality.

Each year, the Office of Research and Evaluation prepares a detailed report on student outcomes in all DE classes. The report presents success and retention rates in each DE section offered in the fall and spring terms. Success and retention rates in DE courses are compared to the success and retention rates in the respective traditional courses. These reports are available on the Institutional Effectiveness webpage.



Ventura College										
Distance Education: Credit Class Enrollments (Seatcounts)										
Enrollments / Outcomes	Academic Year Ending									
	2001	2002	2003	2004	2005	2006	2007	2008	2009	2010
D/E Seatcount	94	522	2,185	2,154	2,429	3,434	4,238	7,307	10,725	11,568
Retained	64	316	1,636	1,487	1,801	2,413	3,086	5,315	8,077	8,766
Retain Rate	68.1%	60.5%	74.9%	69.0%	74.1%	70.3%	72.8%	72.7%	75.3%	75.8%
Succeeded	51	259	1,004	1,146	1,414	1,857	2,359	3,814	5,829	6,334
Success Rate	54.3%	49.6%	45.9%	53.2%	58.2%	54.1%	55.7%	52.2%	54.3%	54.8%
Traditional Classes: Credit Enrollments (Seatcounts)										
Enrollments / Outcomes	Academic Year Ending									
	2001	2002	2003	2004	2005	2006	2007	2008	2009	2010
Trad. Seatcnt	70,490	69,619	72,582	68,380	66,863	67,261	66,296	71,946	78,058	80,478
Retained	56,917	57,552	60,612	57,683	56,771	56,853	56,184	60,109	65,002	67,374
Retain Rate	80.7%	82.7%	83.5%	84.4%	84.9%	84.5%	84.7%	83.5%	83.3%	83.7%
Succeeded	46,867	48,269	51,122	47,629	47,708	46,918	45,950	48,618	52,834	54,971
Success Rate	66.5%	69.3%	70.4%	69.7%	71.4%	69.8%	69.3%	67.6%	67.7%	68.3%

Source: California Community Colleges Chancellor’s Office: Data Mart, Program Retention/Success Rates – By Distance Education Status; Query by College/Staterwide
 Web Link: https://misweb.cccco.edu/mis/onlinestat/ret_sucs_de.cfm