
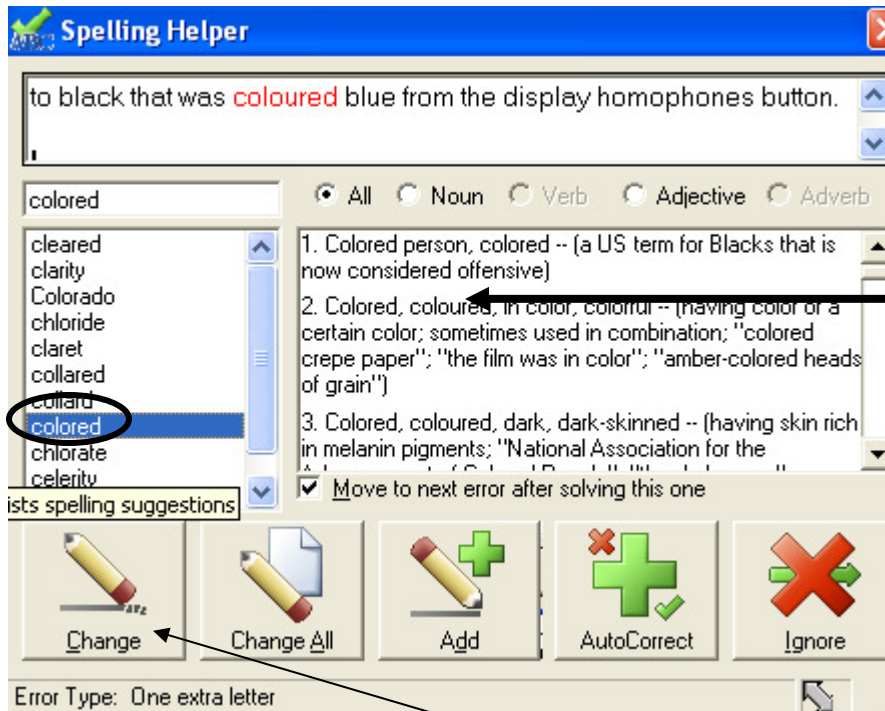



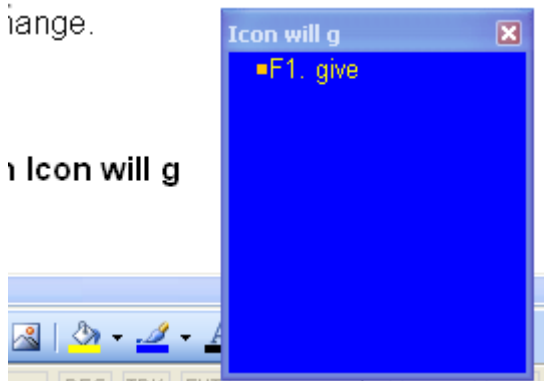
Clicking on the  Phonetic Spell Checker while writing a paper gives you this box, if you have a word to correct.






If you need to you can read the examples of the use of the word to make sure of your selection.

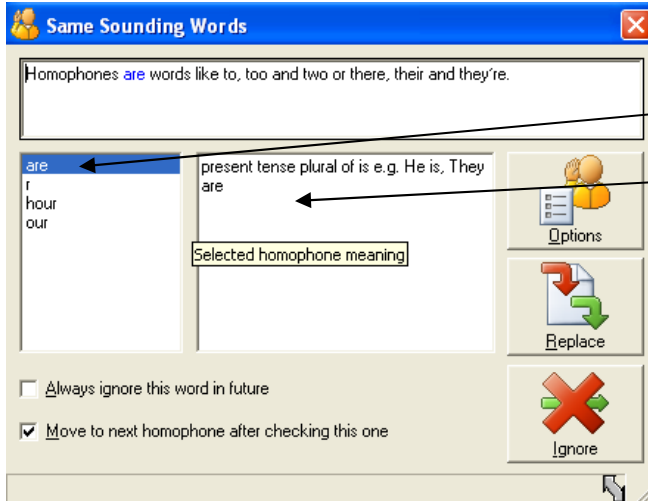
Select the correct spelling then click Change.

Clicking on the  Word Prediction Icon will give you one or more choice of possible words to go in your sentence which makes it quick to spell. In this case it guessed I wanted the word give which I did so I clicked on it and the correct spelling was incorporated into my sentence.



 The dictionary Icon gives you this box After y

Homophones are words like to, too and two, or there, their and they're. When you click on the Icon  they all turn blue. Then you can use the  Icon to make sure you are using the correct word in your sentence.



Click on each word and read how it is used

To turn off the Homophone coloring press this Icon 