

V. STUDENT ACHIEVEMENT

A-1. Student Success Scorecard – Overview and VC Outcomes

The **Accountability Reporting for the Community Colleges (ARCC) Report** was created in response to California Assembly Bill 1417 (2004), which required the establishment of a performance measurement system for the California Community Colleges (CCC). As a result of that legislation, the California Community Colleges Chancellor’s Office developed the **ARCC**, a report which contained performance indicators for both the community college system (as an entity) and the individual colleges. The first **ARCC** report was completed in 2007 and the last report was published in 2012.

In fall 2012, the Seymour-Campbell **Student Success Act of 2012 (SB1456)** was signed into law by Governor Jerry Brown. **SB1456** resulted from the findings of the Student Success Task Force (SSTF), a work group established by the California Community Colleges Board of Governors. One of the twenty-two recommendations set forth by the SSTF was for the California Community Colleges to develop a new accountability reporting system that would define key student success metrics and present them in a clear and concise manner. In spring 2013, the CCC Chancellor’s Office introduced the statewide and college-level **Student Success Scorecard**, which was built on and superseded the **ARCC**.

The **Student Success Scorecard** consists of **six** metrics, of which the following **four** were carried over from the ARCC: Student Progress & Achievement or Completion, Persistence, At Least 30 Units, and Career Development and College Preparation rates. **Two** new metrics were added to the Scorecard: Remedial Progress, and Career Technical Education rate.

The following table provides a summary of VC’s performance on scorecard metrics, including Statewide rates for the 2015 Scorecard (2008-2009 cohort) and the difference between VC’s 2015 rates and the Statewide 2015 rates. Positive differences (where the college’s rate is higher than the Statewide rate) are highlighted in blue and negative differences are highlighted in pink.

Ventura College Scorecard					
Scorecard Metrics	Ventura College			Statewide	Difference
	2013 2006-2007	2014 2007-2008	2015 2008-2009	2015 2008-2009	VC Rate <i>minus</i> Statewide Rate
Completion					
Prepared	71.5%	69.4%	69.5%	69.7%	- 0.2
Unprepared	42.3%	44.3%	40.7%	39.2%	+ 1.5
Overall	55.0%	54.6%	51.4%	46.8%	+ 4.6
Persistence					
Prepared	61.9%	67.8%	63.0%	72.8%	- 9.8
Unprepared	62.9%	65.5%	65.3%	71.3%	- 6.0
Overall	62.5%	66.4%	64.5%	71.7%	- 7.2
30 Units					
Prepared	71.3%	75.0%	68.6%	71.1%	- 2.5
Unprepared	69.7%	71.1%	68.6%	65.0%	+ 3.6
Overall	70.4%	72.7%	68.6%	66.5%	+ 2.1
Remedial					
Math	27.4%	30.7%	29.5%	31.0%	- 1.5
English	41.4%	45.3%	52.3%	43.4%	+ 8.9
ESL*	4.8%	5.4%	4.5%	28.4%	- 23.9
Career Technical Education	54.9%	53.9%	52.9%	49.9%	+ 3.0

* Note: VC’s ESL rate is significantly understated due to incorrect and inconsistent coding of pertinent MIS Data Elements. The necessary coding corrections have been made; new ESL cohorts will begin to reflect the college’s true ESL improvement rates.

V. STUDENT ACHIEVEMENT

A-2. Student Success Scorecard – Definitions of Metrics

Scorecard Metrics

• Completion

Prepared

Percentage of first-time students with a minimum of six earned units who attempted any Math or English course in the first three years and achieved any of the following outcomes within six years of entry: AA/AS, credit Certificate, transfer to 4-year school, "Transfer Prepared" (60 transfer units & GPA ≥ 2.0). Prepared means that the lowest course attempted in Math and/or English was college level.

Unprepared

Percentage of first-time students with a minimum of six earned units who attempted any Math or English course in the first three years and achieved any of the following outcomes within six years of entry: AA/AS, credit Certificate, transfer to 4-year school, "Transfer Prepared" (60 transfer units & GPA ≥ 2.0). Unprepared means that the lowest course attempted in Math and/or English was below college level.

Overall

Percentage of first-time students with a minimum of six earned units who attempted any Math or English course in the first three years and achieved any of the following outcomes within six years of entry: AA/AS, credit Certificate, transfer to 4-year school, "Transfer Prepared" (60 transfer units & GPA ≥ 2.0).

• Persistence

Prepared

Percentage of first-time students with a minimum of six earned units who attempted any Math or English course in the first three years and who enrolled in the first three primary semester terms at any CCC or within the first 3 primary semester terms attained an AA/AS, credit Certificate, or transfer (4-year school). Prepared means that the lowest course attempted in Math and/or English was college level.

Unprepared

Percentage of first-time students with a minimum of six earned units who attempted any Math or English course in the first three years and who enrolled in the first three primary semester terms at any CCC or within the first 3 primary semester terms attained an AA/AS, credit Certificate, or transfer (4-year school). Unprepared means that the lowest course attempted in Math and/or English was below college level.

Overall

Percentage of first-time students with a minimum of six earned units who attempted any Math or English course in the first three years and who enrolled in the first three primary semester terms at any CCC or within the first 3 primary semester terms attained an AA/AS, credit Certificate, or transfer (4-year school).

• 30 Units

Prepared

Percentage of first-time students with a minimum of six earned units who attempted any Math or English course in the first three years and within 6 years of entry earned at least 30 units in CCC system. Prepared means that the lowest course attempted in Math and/or English was college level.

Unprepared

Percentage of first-time students with a minimum of six earned units who attempted any Math or English course in the first three years and within 6 years of entry earned at least 30 units in CCC system. Unprepared means that the lowest course attempted in Math and/or English was below college level.

Overall

Percentage of first-time students with a minimum of six earned units who attempted any Math or English course in the first three years and within 6 years of entry earned at least 30 units in CCC system.

V. STUDENT ACHIEVEMENT

A-2. Student Success Scorecard – Definitions of Metrics

- **Remedial**

Math

Percentage of credit students who attempted for the first time a Math course designated at two to four levels below transfer and successfully completed a college-level Math course within six years.

English

Percentage of credit students who attempted for the first time an English Writing course designated at one to four levels below transfer and successfully completed a college-level English course within six years.

ESL

Percentage of credit students who attempted for the first time an ESL course in any level below transfer and successfully completed a zero-level ESL course or a college-level English course within six years.

- **Career Technical Education**

Percentage of students who attempted a CTE course for the first time and completed more than eight units in the subsequent three years in a single discipline and who achieved any of the following outcomes within six years of entry: AA/AS, credit Certificate, transfer to 4-year school, "Transfer Prepared" (60 transfer units & GPA ≥ 2.0).

Weblinks

Ventura College 2015 Scorecard

<http://scorecard.cccco.edu/scorecardrates.aspx?CollegeID=683>

Statewide 2015 Scorecard

<http://scorecard.cccco.edu/scorecardrates.aspx?CollegeID=000>

Scorecard Documentation

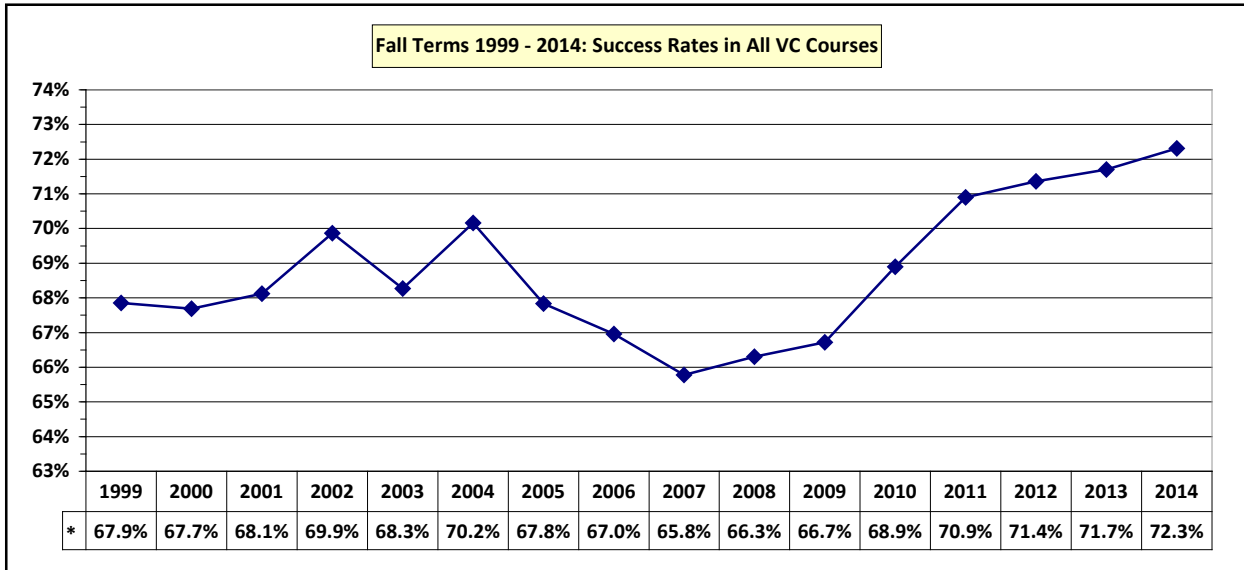
<http://scorecard.cccco.edu/scorecarddocumentation.aspx>

V. STUDENT ACHIEVEMENT

B-1. Grades Distributions and Success / Retention Rates

Course success rates at Ventura College have been steadily *increasing* since the 16-year **low** of **65.8%** in fall 2007. In **fall 2014**, the course success rate was **72.3%** compared to the statewide rate of **69.1%**. VC's **fall 2014** retention rate of **85.7%** compares favorably to the statewide average of **86.0%**.

The chart below graphically depicts Ventura College course success rates for fall terms 1999 to 2014. Grades distributions for the **last** five fall semesters are presented in the table that follows the chart.



Ventura College – Grades Distributions Fall Terms: 2010 through 2014										
Grade Notation	Fall 2010		Fall 2011		Fall 2012		Fall 2013		Fall 2014	
	Count	Rate	Count	Rate	Count	Rate	Count	Rate	Count	Rate
A	11,988	32.0%	11,509	30.7%	11,218	31.3%	11,448	32.1%	11,363	31.9%
B	7,503	20.0%	7,934	21.2%	7,819	21.8%	7,803	21.9%	8,099	22.7%
C	4,956	13.2%	5,517	14.7%	5,566	15.5%	5,428	15.2%	5,425	15.2%
P	1,392	3.7%	1,610	4.3%	993	2.8%	903	2.5%	880	2.5%
Successful	25,839	68.9%	26,570	70.9%	25,596	71.4%	25,582	71.7%	25,767	72.3%
D	1,893	5.1%	1,965	5.3%	1,996	5.6%	1,833	5.1%	1,975	5.5%
F	3,908	10.4%	3,465	9.2%	3,348	9.3%	3,063	8.6%	2,689	7.6%
NP	476	1.3%	458	1.2%	211	0.5%	129	0.4%	112	0.3%
Retained	32,116	85.7%	32,458	86.6%	31,151	86.8%	30,607	85.8%	30,543	85.7%
W	5,340	14.3%	5,026	13.4%	4,718	13.2%	5,070	14.2%	5,089	14.3%
Seatcount	37,456	100.0%	37,484	100.0%	35,869	100.0%	35,677	100.0%	35,632	100.0%
Headcount	13,774		13,693		13,109		13,080		13,138	

Source: Ventura County Community College District – Banner Administrative Data System: SDA Current Courses View

Definitions:

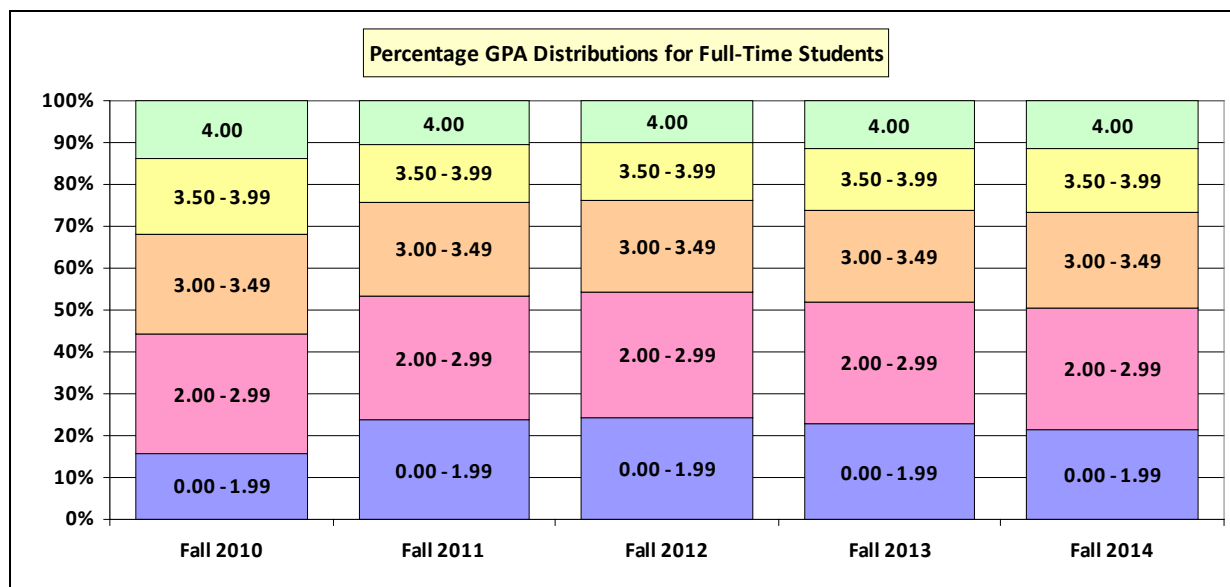
- (a) Valid grade notations: A, B, IB, C, IC, P, D, ID, F, IF, NP, INP, or W.
- (b) Incomplete grade notations were converted to their default notation; e.g., an IB was converted to a B.
- (c) Successful grade notations: A, B, C, or P
- (d) Success Rate: Number of Successful grade notations *divided by* Number of Valid grade notations and *multiplied by* 100.
- (e) Retained grade notations: A, B, C, P, D, F, or NP.
- (f) Retention Rate: Number of Retained grade notations *divided by* Number of Valid grade notations and *multiplied by* 100.

V. STUDENT ACHIEVEMENT

B-2. Grade Point Averages (GPAs)

GPA's for Full-Time VC students exceeded GPAs for Part-Time students by between 0.10 and 0.31 point.

Full-Time students were divided into **five** groups based on their GPAs. The second data table (at the bottom of the page) indicates the distribution of students according to these groupings. In the chart that follows, the percentage of students in each group (**GPA Range**) is compared across fall terms.



Ventura College Average GPAs Fall Terms: 2010 through 2014										
Student Category	Fall 2010		Fall 2011		Fall 2012		Fall 2013		Fall 2014	
	Count	GPA	Count	GPA	Count	GPA	Count	GPA	Count	GPA
Part-Time	9,075	2.56	8,279	2.62	7,726	2.63	7,775	2.66	7,918	2.68
Full-Time	3,069	2.87	5,378	2.77	5,357	2.73	5,282	2.81	5,194	2.83
Overall	12,144	2.64	13,657	2.71	13,083	2.69	13,057	2.75	13,112	2.77

Ventura College GPA Distributions for Full-Time Students Fall Terms: 2010 through 2014										
GPA Range	Fall 2010		Fall 2011		Fall 2012		Fall 2013		Fall 2014	
	Count	Percnt	Count	Percnt	Count	Percnt	Count	Percnt	Count	Percnt
4.00	423	13.8%	561	10.4%	524	9.8%	592	11.2%	595	11.5%
3.50 – 3.99	562	18.3%	751	14.0%	748	14.0%	783	14.8%	793	15.3%
3.00 – 3.49	731	23.8%	1,195	22.2%	1,164	21.7%	1,156	21.9%	1,174	22.6%
2.00 – 2.99	866	28.2%	1,591	29.6%	1,606	30.0%	1,537	29.1%	1,513	29.1%
0.00 – 1.99	487	15.9%	1,280	23.8%	1,315	24.5%	1,214	23.0%	1,119	21.5%
Totals	3,069	100.0%	5,378	100.0%	5,357	100.0%	5,282	100.0%	5,194	100.0%

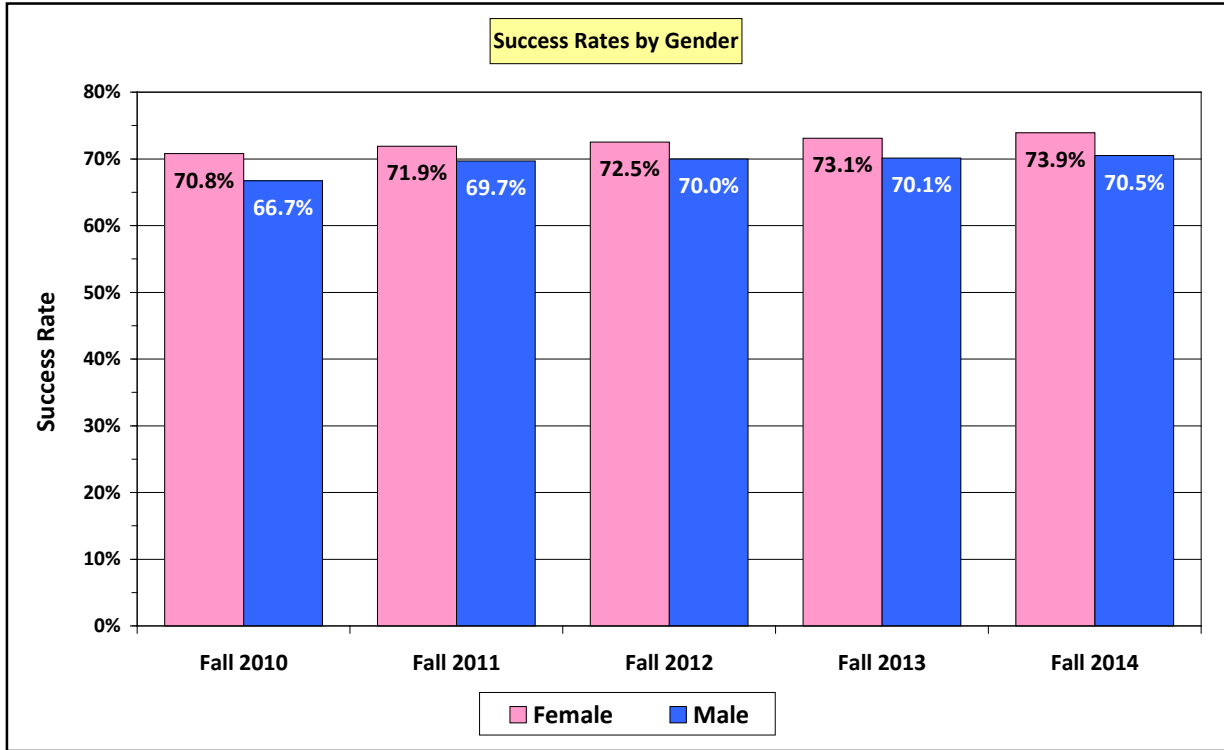
Source: Ventura County Community College District – Banner Administrative Data System: SDA Term GPA View

Note: GPA data for Ventura College students include course enrollments at Moorpark and Oxnard colleges.

V. STUDENT ACHIEVEMENT

B-3. Success / Retention Rates by Gender

Retention Rates at VC were essentially equivalent for females and males in the fall terms 2010 – 2014. Over this same period, **Success Rates** for females were generally **three to four** percentage points **higher** than they were for males.



Ventura College – Course Outcomes by Gender										
Fall Terms: 2010 through 2014										
Gender	Fall 2010		Fall 2011		Fall 2012		Fall 2013		Fall 2014	
	Count	Percnt	Count	Percnt	Count	Percnt	Count	Percnt	Count	Percnt
Female										
Successful	14,443	70.8%	14,269	71.9%	13,858	72.5%	13,792	73.1%	13,917	73.9%
Retained	17,563	86.1%	17,202	86.7%	16,620	87.0%	16,281	86.3%	16,226	86.2%
Total	20,401	100.0%	19,839	100.0%	19,107	100.0%	18,867	100.0%	18,830	100.0%
Male										
Successful	11,163	66.7%	12,192	69.7%	11,589	70.0%	11,565	70.1%	11,533	70.5%
Retained	14,264	85.3%	15,122	86.4%	14,340	86.7%	14,068	85.2%	13,922	85.1%
Total	16,725	100.0%	17,501	100.0%	16,547	100.0%	16,503	100.0%	16,356	100.0%
Unreported										
Successful	233	70.6%	109	75.7%	149	69.3%	225	73.3%	317	71.1%
Retained	289	87.6%	134	93.1%	191	88.8%	258	84.0%	395	88.6%
Total	330	100.0%	144	100.0%	215	100.0%	307	100.0%	446	100.0%
Overall										
Successful	25,839	69.0%	26,570	70.9%	25,596	71.4%	25,582	71.7%	25,767	72.3%
Retained	32,116	85.7%	32,458	86.6%	31,151	86.8%	30,607	85.8%	30,543	85.7%
Total	37,456	100.0%	37,484	100.0%	35,869	100.0%	35,677	100.0%	35,632	100.0%

Source: Ventura County Community College District – Banner Administrative Data System: SDA Current Courses View

V. STUDENT ACHIEVEMENT

B-4. Success / Retention Rates by Race/Ethnicity – Data Table

In fall 2014, **Retention Rates** for Racial/Ethnic Groups at VC ranged from a low of 80.3% for Pacific Island students to a high of 88.5% for Asian students.

Success Rates in fall 2014 ranged from a low of 63.6% for Black (African- American) students to a high of 79.9% for Native American students.

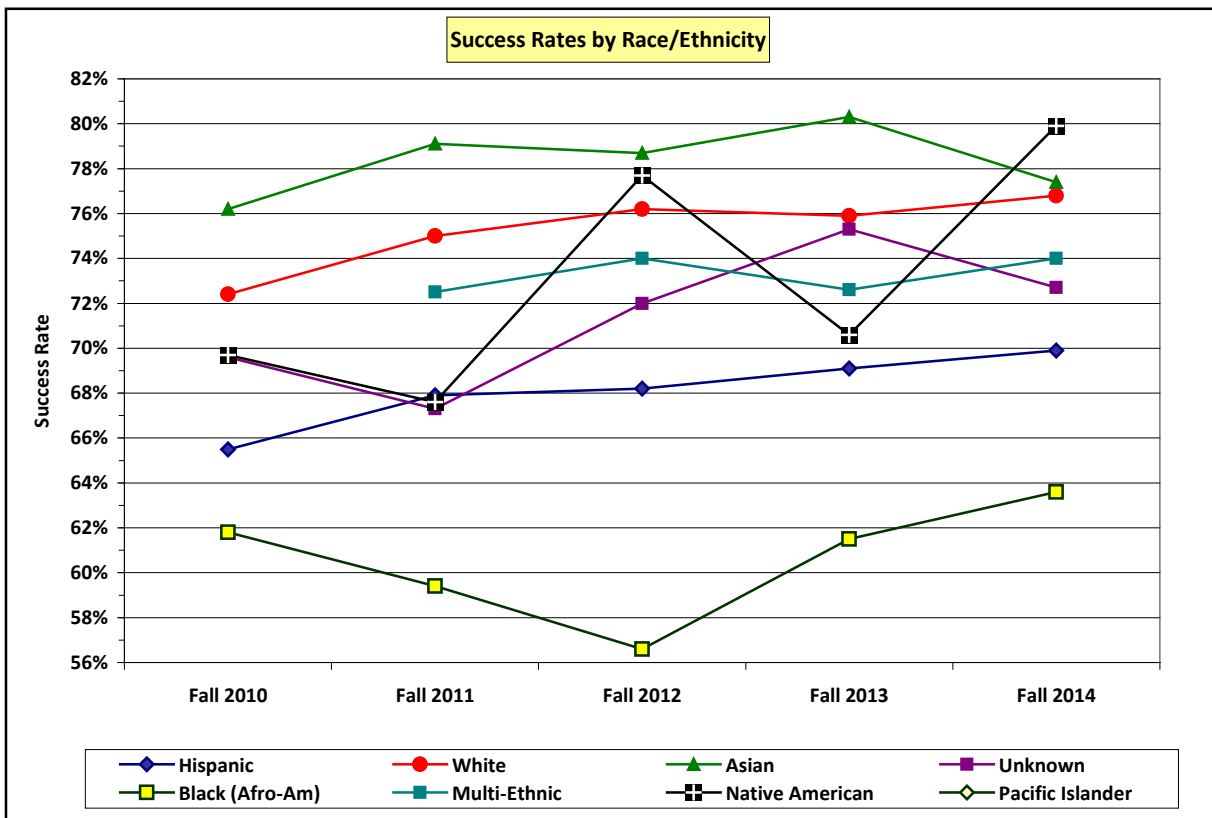
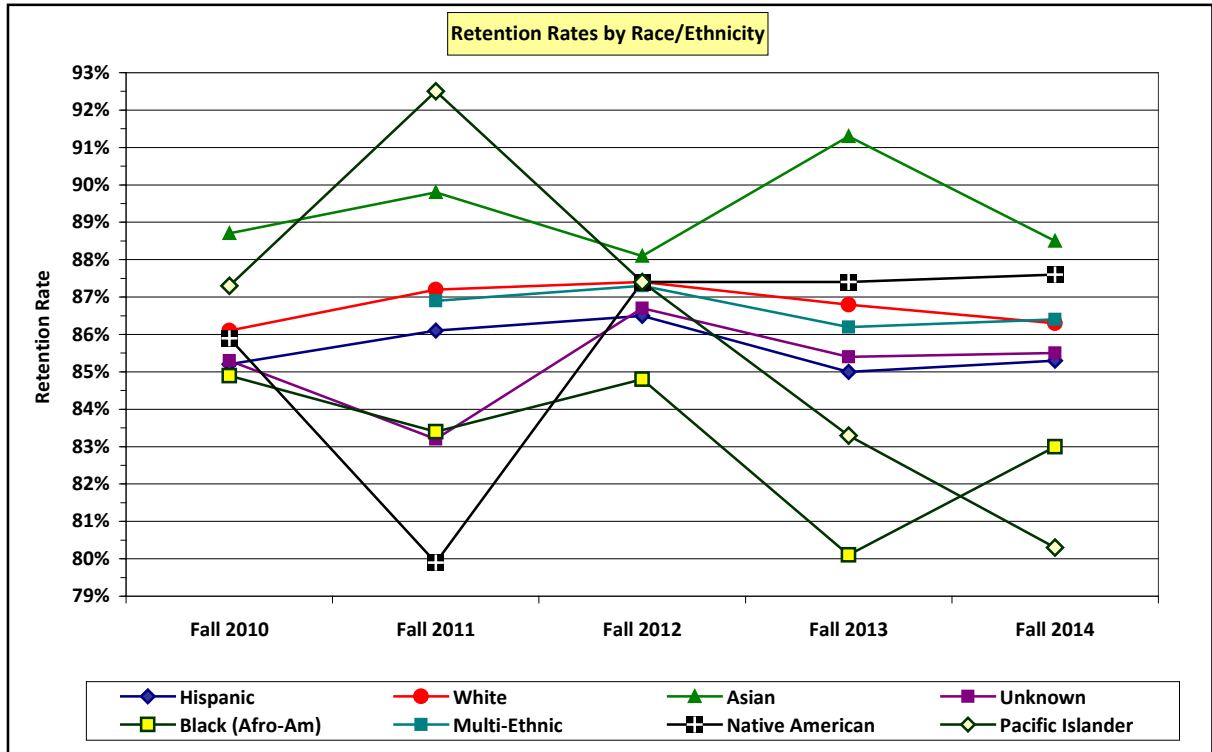
Charts on the next page depict retention and success rates for each Racial/Ethnic group by fall term.

Ventura College – Course Outcomes by Race/Ethnicity										
Fall Terms: 2010 through 2014										
Race or Ethnicity	Fall 2010		Fall 2011		Fall 2012		Fall 2013		Fall 2014	
	Count	Perct	Count	Perct	Count	Perct	Count	Perct	Count	Perct
Asian										
Successful	1,795	76.2%	1,393	79.1%	1,394	78.7%	1,406	80.3%	1,377	77.4%
Retained	2,090	88.7%	1,582	89.8%	1,561	88.1%	1,597	91.3%	1,576	88.5%
Total	2,357	100.0%	1,762	100.0%	1,772	100.0%	1,750	100.0%	1,780	100.0%
Black										
Successful	830	61.8%	686	59.4%	635	59.6%	646	61.5%	623	63.6%
Retained	1,139	84.9%	963	83.4%	904	84.8%	842	80.1%	813	83.0%
Total	1,342	100.0%	1,154	100.0%	1,066	100.0%	1,051	100.0%	980	100.0%
Hispanic										
Successful	11,032	65.5%	12,998	67.9%	13,279	68.2%	13,748	69.1%	14,411	69.9%
Retained	14,337	85.2%	16,476	86.1%	16,834	86.5%	16,919	85.0%	17,584	85.3%
Total	16,833	100.0%	19,129	100.0%	19,471	100.0%	19,906	100.0%	20,622	100.0%
Native Amer.										
Successful	385	69.7%	165	67.6%	160	77.7%	101	70.6%	135	79.9%
Retained	474	85.9%	195	79.9%	180	87.4%	125	87.4%	148	87.6%
Total	552	100.0%	244	100.0%	206	100.0%	143	100.0%	169	100.0%
Pac. Islander										
Successful	188	72.6%	102	76.1%	82	73.9%	64	71.1%	49	64.5%
Retained	226	87.3%	124	92.5%	97	87.4%	75	83.3%	61	80.3%
Total	259	100.0%	134	100.0%	111	100.0%	90	100.0%	76	100.0%
Multi-Ethnic										
Successful	---	---	1,126	72.5%	1,082	74.0%	1,017	72.6%	1,046	74.0%
Retained	---	---	1,350	86.9%	1,277	87.3%	1,208	86.2%	1,222	86.4%
Total	---	---	1,554	100.0%	1,462	100.0%	1,401	100.0%	1,414	100.0%
White										
Successful	10,071	72.4%	9,880	75.0%	8,807	76.2%	8,420	75.9%	7,940	76.8%
Retained	11,966	86.1%	11,496	87.2%	10,109	87.4%	9,637	86.8%	8,920	86.3%
Total	13,904	100.0%	13,180	100.0%	11,563	100.0%	11,097	100.0%	10,335	100.0%
Unknown										
Successful	1,538	69.6%	220	67.3%	157	72.0%	180	75.3%	186	72.7%
Retained	1,884	85.3%	272	83.2%	189	86.7%	204	85.4%	219	85.5%
Total	2,209	100.0%	327	100.0%	218	100.0%	180	100.0%	256	100.0%
Overall										
Successful	25,839	69.0%	26,570	70.9%	25,596	71.4%	25,582	71.7%	25,767	72.3%
Retained	32,116	85.7%	32,458	86.6%	31,151	86.8%	30,607	85.8%	30,543	85.7%
Total	37,456	100.0%	37,484	100.0%	35,869	100.0%	35,677	100.0%	35,632	100.0%

Source: Ventura County Community College District – Banner Administrative Data System: SDA Current Courses View

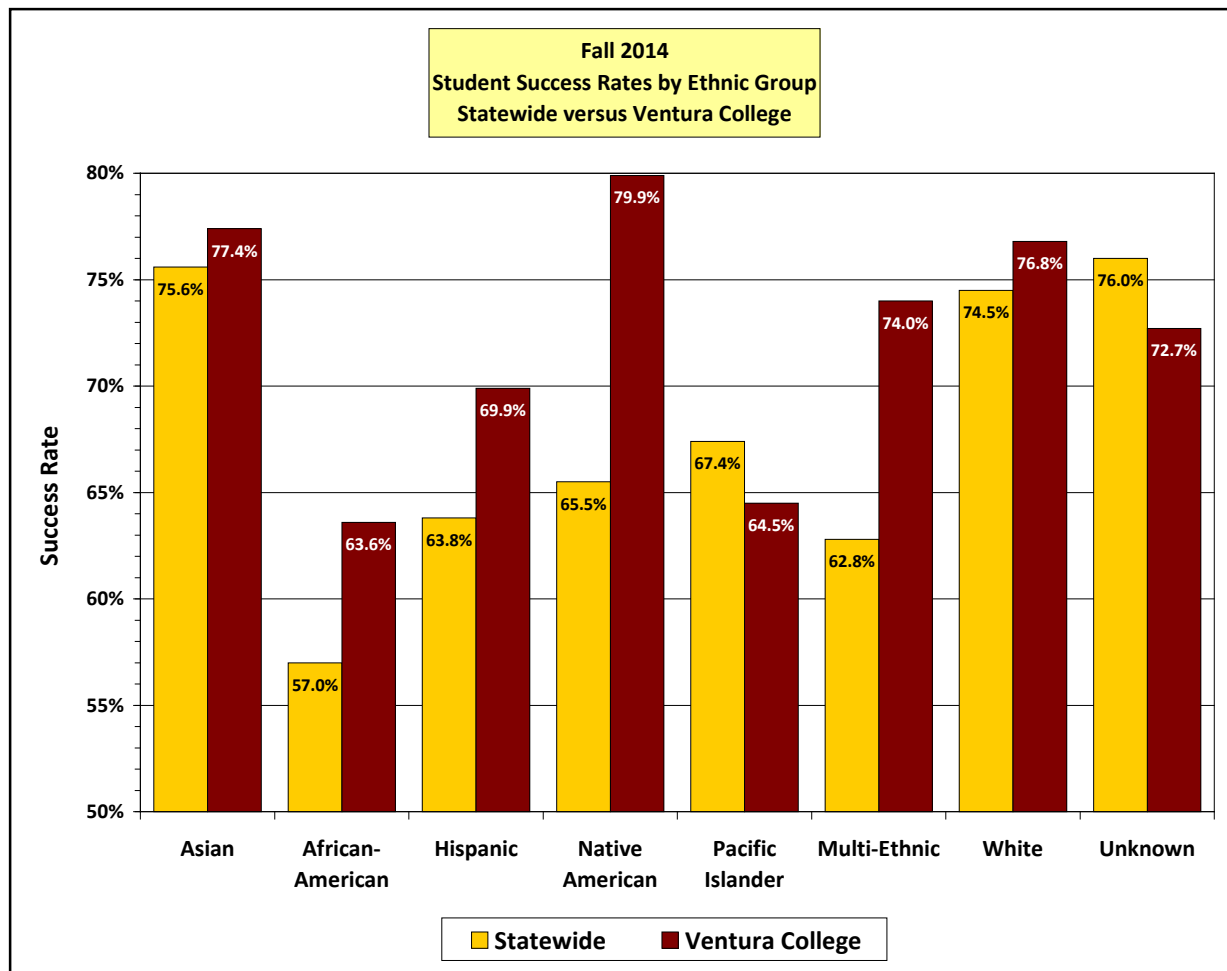
V. STUDENT ACHIEVEMENT

B-4. Success / Retention Rates by Race/Ethnicity – Charts



V. STUDENT ACHIEVEMENT

B-4. Success / Retention Rates by Race/Ethnicity in Fall 2014



Statewide: Hispanics accounted for **43%** of course enrollments (1,693,023 out of 3,898,422).
Ventura College: Hispanics accounted for **58%** of course enrollments (20,662 out of 35,632).

Fall 2014 – Course Outcomes by Race / Ethnicity						
Race / Ethnicity	Statewide			Ventura College		
	Course Enrollments	Retention Rate	Success Rate	Course Enrollments	Retention Rate	Success Rate
Asian	519,023	88.2%	75.6%	1,780	88.5%	77.4%
African-American	277,836	81.0%	57.0%	980	83.0%	63.6%
Hispanic	1,693,023	83.1%	63.8%	20,662	85.3%	69.9%
Native American	18,188	85.1%	65.5%	169	87.6%	79.9%
Pacific Islander	18,373	83.5%	67.4%	76	80.3%	64.5%
Multi-Ethnic	170,099	84.7%	62.8%	1,414	86.4%	74.0%
White	1,086,885	87.5%	74.5%	10,335	86.3%	76.8%
Unknown	114,995	89.5%	76.0%	256	85.5%	72.7%
Totals/Av. Rates	3,898,422	86.0%	69.1%	35,632	85.7%	72.3%

Source: Statewide: CCC Chancellor's Office: Data Mart, Program Retention/Success Rates by College/Statewide

Weblink: http://datamart.cccco.edu/Outcomes/Course_Ret_Success.aspx

Ventura College: VCCCD – Banner Administrative Data System: SDA Current Courses View

V. STUDENT ACHIEVEMENT

B-5. Success / Retention Rates by Age Group – Data Table

In fall 2014, Retention Rates for Age Groups at Ventura College ranged from a low of 83.1% for students “40 – 49 years of age” to a high of 88.0% for students in the “19 / younger” age group.

Success Rates in fall 2014 ranged from a low of 70.1% for students “20 – 24 years of age” to a high of 77.0% for students in the “50 or older” age group.

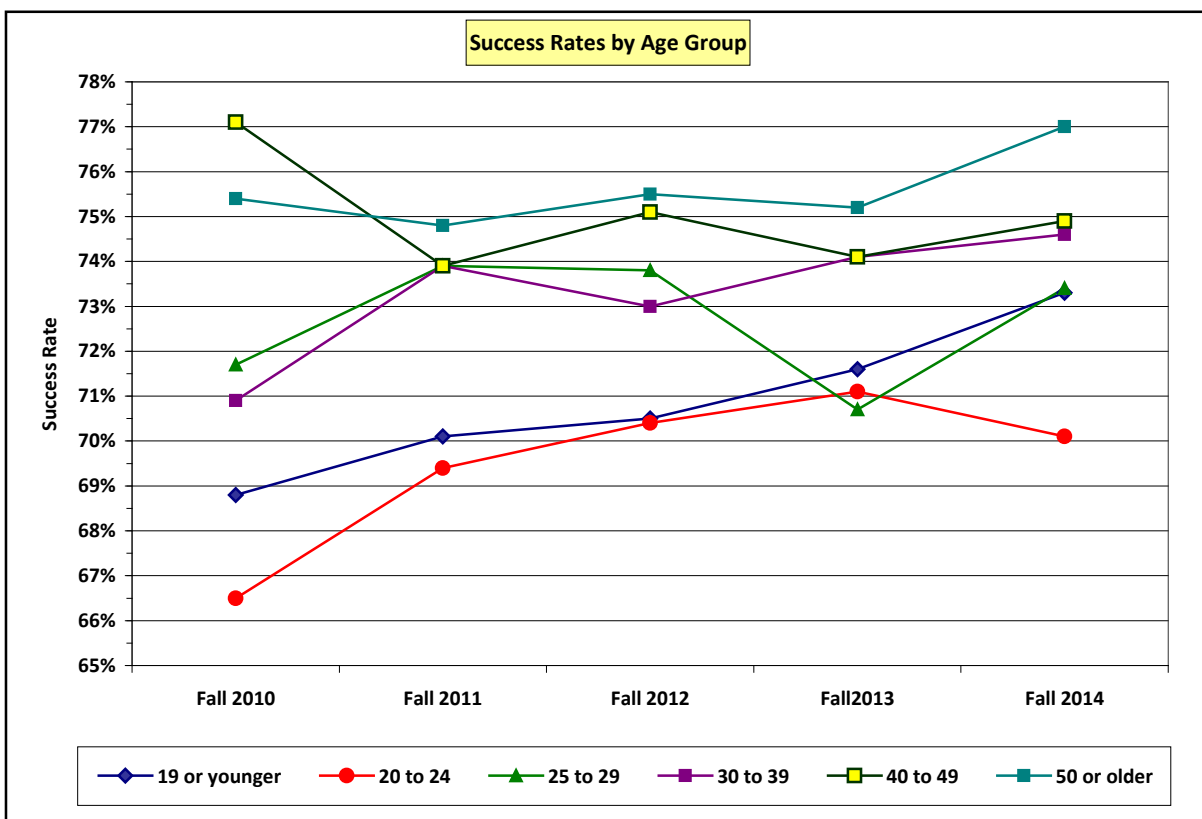
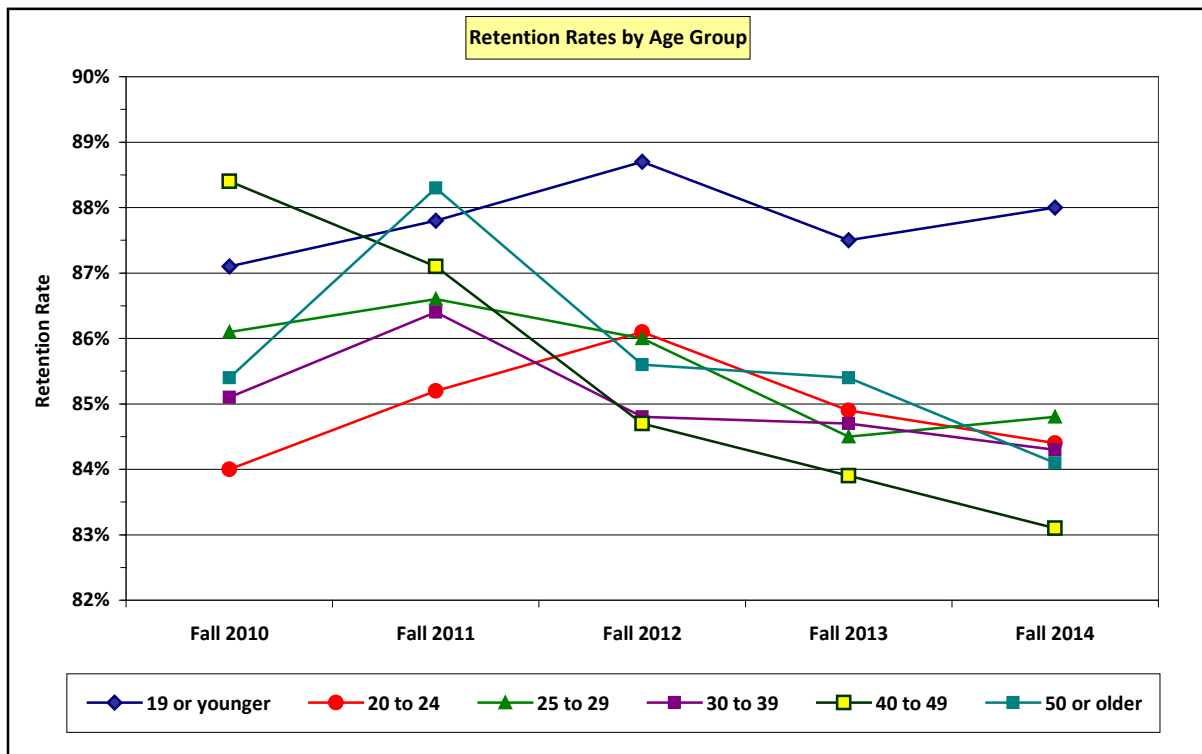
The charts on the next page depict retention and success rates for each Age Group.

Ventura College – Course Outcomes by Age Group Fall Terms: 2010 through 2014										
Age Group (In Years)	Fall 2010		Fall 2011		Fall 2012		Fall 2013		Fall 2014	
	Count	Perct	Count	Perct	Count	Perct	Count	Perct	Count	Perct
19 / younger										
Successful	9,769	68.8%	9,554	70.1%	9,176	70.5%	9,468	71.6%	9,718	73.3%
Retained	12,366	87.1%	11,965	87.8%	11,552	88.7%	11,574	87.5%	11,665	88.0%
Total	14,192	100.0%	13,631	100.0%	13,021	100.0%	13,224	100.0%	13,251	100.0%
20 to 24										
Successful	9,123	66.5%	9,526	69.4%	9,622	70.4%	9,788	71.1%	9,923	70.1%
Retained	11,538	84.0%	11,706	85.2%	11,756	86.1%	11,690	84.9%	11,937	84.4%
Total	13,729	100.0%	13,732	100.0%	13,659	100.0%	13,769	100.0%	14,148	100.0%
25 to 29										
Successful	2,638	71.7%	2,927	73.9%	2,846	73.8%	2,492	70.7%	2,615	73.4%
Retained	3,169	86.1%	3,430	86.6%	3,315	86.0%	2,980	84.5%	3,020	84.8%
Total	3,680	100.0%	3,961	100.0%	3,856	100.0%	3,526	100.0%	3,562	100.0%
30 to 39										
Successful	2,124	70.9%	2,259	73.9%	1,981	73.0%	2,087	74.1%	1,907	74.6%
Retained	2,550	85.1%	2,641	86.4%	2,301	84.8%	2,383	84.7%	2,154	84.3%
Total	2,997	100.0%	3,058	100.0%	2,714	100.0%	2,815	100.0%	2,555	100.0%
40 to 49										
Successful	1,335	77.1%	1,399	73.9%	1,209	75.1%	1,036	74.1%	917	74.9%
Retained	1,531	88.4%	1,647	87.1%	1,363	84.7%	1,173	83.9%	1,017	83.1%
Total	1,731	100.0%	1,892	100.0%	1,610	100.0%	1,398	100.0%	1,224	100.0%
50 or older										
Successful	850	75.4%	905	74.8%	762	75.5%	711	75.2%	687	77.0%
Retained	962	85.4%	1,069	88.3%	864	85.6%	807	85.4%	750	84.1%
Total	1,127	100.0%	1,210	100.0%	1,009	100.0%	945	100.0%	892	100.0%
Overall										
Successful	25,839	69.0%	26,570	70.9%	25,596	71.4%	25,582	71.7%	25,767	72.3%
Retained	32,116	85.7%	32,458	86.6%	31,151	86.8%	30,607	85.8%	30,543	85.7%
Total	37,456	100.0%	37,484	100.0%	35,869	100.0%	35,677	100.0%	35,632	100.0%

Source: Ventura County Community College District – Banner Administrative Data System: SDA Current Courses View

V. STUDENT ACHIEVEMENT

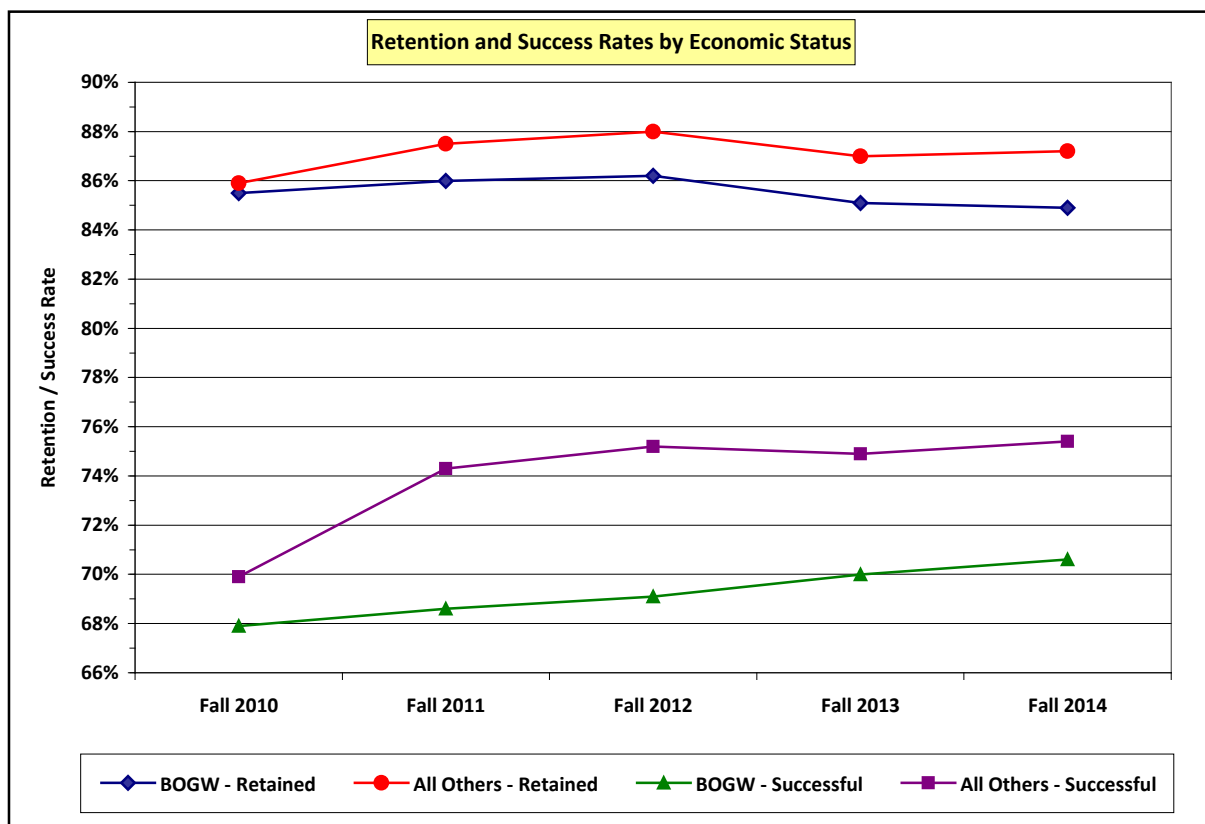
B-5. Success / Retention Rates by Age Group – Charts



V. STUDENT ACHIEVEMENT

B-6. Success / Retention Rates by Economic Status

In this analysis, students receiving a Board of Governors Waiver (BOGW) are considered to be “economically disadvantaged.” At Ventura College, Success and Retention rates for BOGW students are slightly **lower** than for students who did not receive BOGW’s (All Others).



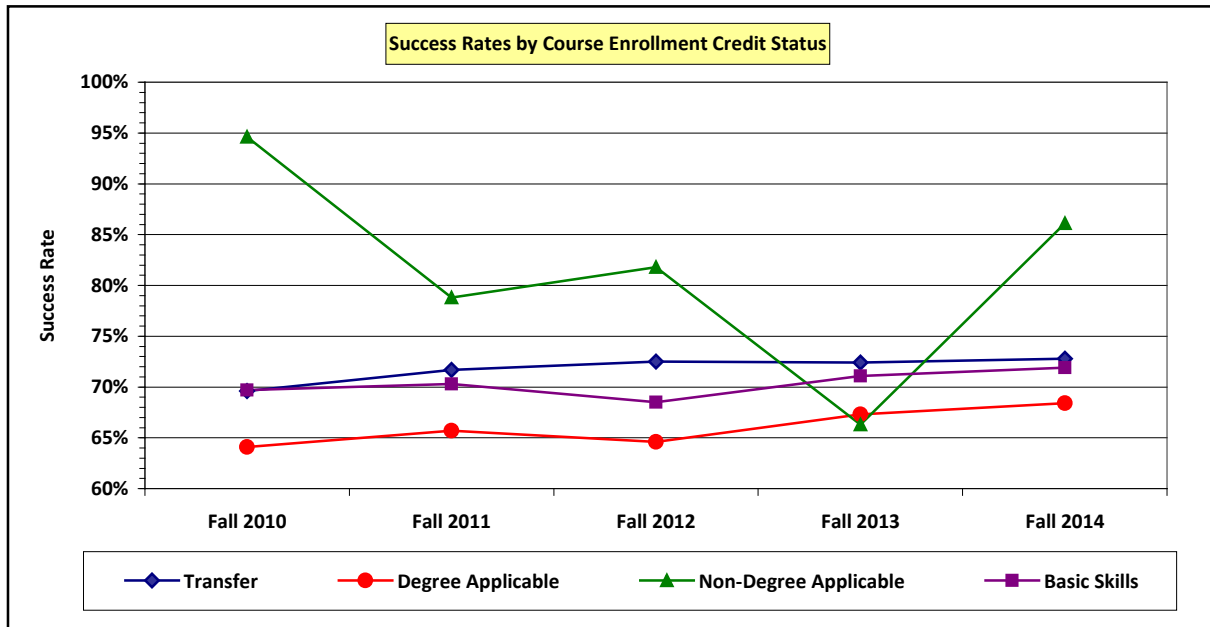
Ventura College – Course Outcomes by Economic Status										
Fall Terms: 2010 through 2014										
Economic Status	Fall 2010		Fall 2011		Fall 2012		Fall 2013		Fall 204	
	Count	Percnt	Count	Percnt	Count	Percnt	Count	Percnt	Count	Percnt
BOGW										
Successful	12,004	67.9%	15,514	68.6%	15,600	69.1%	16,188	70.0%	16,311	70.6%
Retained	15,114	85.5%	19,449	86.0%	19,451	86.2%	19,693	85.1%	19,609	84.9%
Total	17,673	100.0%	22,609	100.0%	22,578	100.0%	23,133	100.0%	23,091	100.0%
All Others										
Successful	13,835	69.9%	11,056	74.3%	9,996	75.2%	9,394	74.9%	9,456	75.4%
Retained	17,002	85.9%	13,009	87.5%	11,700	88.0%	10,914	87.0%	10,934	87.2%
Total	19,783	100.0%	14,875	100.0%	13,291	100.0%	12,544	100.0%	12,541	100.0%
Overall										
Successful	25,839	69.0%	26,570	70.9%	25,596	71.4%	25,582	71.7%	25,767	72.3%
Retained	32,116	85.7%	32,458	86.6%	31,151	86.8%	30,607	85.8%	30,543	85.7%
Total	37,456	100.0%	37,484	100.0%	35,869	100.0%	35,677	100.0%	35,632	100.0%

Source: Ventura County Community College District – Banner Administrative Data System: SDA Current Courses View
Fee Waiver Code = B*

V. STUDENT ACHIEVEMENT

B-7. Success / Retention Rates by Course Enrollment Credit Status

In fall 2014, the majority of course enrollments were in **Transfer (84%)** and **Degree Applicable (12%)** courses. Success Rates in Transfer courses ranged from 69.6% in fall 2010 to 72.8% in fall 2014. Success Rates in Basic Skills courses were higher than in Degree Applicable courses.



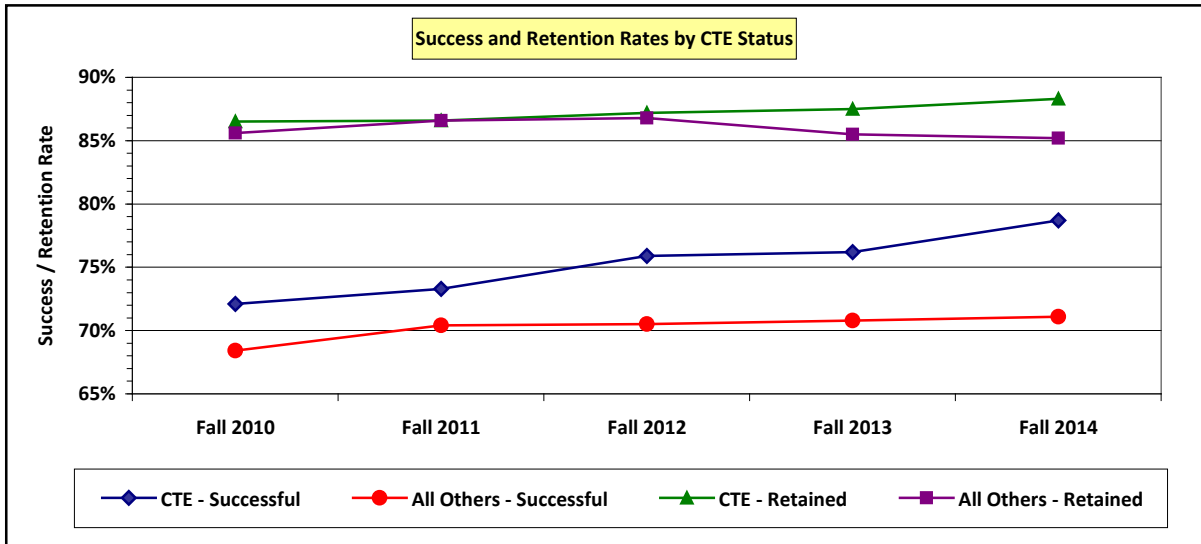
Ventura College – Course Outcomes by Course Enrollment Credit Status										
Fall Terms: 2010 through 2014										
Credit Status	Fall 2010		Fall 2011		Fall 2012		Fall 2013		Fall 2014	
	Count	Percent	Count	Percent	Count	Percent	Count	Percent	Count	Percent
Transfer										
Successful	21,727	69.6%	21,988	71.7%	21,505	72.5%	21,665	72.4%	21,804	72.8%
Retained	26,763	85.8%	26,567	86.6%	25,821	87.0%	25,684	85.8%	25,658	85.7%
Total	31,201	100.0%	30,663	100.0%	29,676	100.0%	29,931	100.0%	29,934	100.0%
Degree App.										
Successful	2,942	64.1%	3,161	65.7%	2,881	64.6%	2,899	67.3%	2,862	68.4%
Retained	3,866	84.2%	4,065	84.5%	3,803	85.3%	3,676	85.3%	3,548	84.8%
Total	4,589	100.0%	4,808	100.0%	4,457	100.0%	4,309	100.0%	4,186	100.0%
Not Deg. App.										
Successful	35	94.6%	63	78.8%	130	81.8%	57	66.3%	87	86.1%
Retained	35	94.6%	66	82.5%	133	83.6%	57	66.3%	90	89.1%
Total	37	100.0%	80	100.0%	159	100.0%	86	100.0%	101	100.0%
Basic Skills										
Successful	1,135	69.7%	1,358	70.3%	1,080	68.5%	961	71.1%	1,014	71.9%
Retained	1,452	89.1%	1,760	91.1%	1,394	88.4%	1,190	88.1%	1,247	88.4%
Total	1,629	100.0%	1,933	100.0%	1,577	100.0%	1,351	100.0%	1,411	100.0%
Overall										
Successful	25,839	69.0%	26,570	70.9%	25,596	71.4%	25,582	71.7%	25,767	72.3%
Retained	32,116	85.7%	32,458	86.6%	31,151	86.8%	30,607	85.8%	30,543	85.7%
Total	37,456	100.0%	37,484	100.0%	35,869	100.0%	35,677	100.0%	35,632	100.0%

Source: Ventura County Community College District – Banner Administrative Data System:
SDA – Current Courses View and Catalog View

V. STUDENT ACHIEVEMENT

B-8. Success / Retention Rates in CTE Courses

Over the past five fall terms, the percentage of CTE enrollments at VC has declined from 16.7% (fall 2010) to 15.5% (fall 2014). Success and Retention rates in CTE courses are higher than in All Other courses.



CTE courses have a **SAM** (Student Accountability Model) **Code** of: **A** (Apprenticeship), **B** (Advanced Occupational), or **C** (Clearly Occupational). Courses with SAM Codes of **D** (Possibly Occupational) or **E** (Non-Occupational) are not considered to be CTE. This is the criterion used by the Chancellor’s Office to define Vocational Courses in the ARCC.

Ventura College – Course Outcomes in CTE Courses										
Fall Terms: 2010 through 2014										
Course Category	Fall 2010		Fall 2011		Fall 2012		Fall 2013		Fall 2014	
	Count	Perct	Count	Perct	Count	Perct	Count	Perct	Count	Perct
Enrollments										
SAM Code										
B	1,442	3.8%	1,471	3.9%	1,523	4.2%	1,598	4.5%	1,479	4.2%
C	4,816	12.9%	5,074	13.5%	4,243	11.8%	4,251	11.9%	4,048	11.4%
D	1,263	3.4%	1,051	2.8%	778	2.2%	785	2.2%	806	2.3%
E	29,935	79.9%	29,888	79.8%	29,325	81.8%	29,043	81.4%	29,299	82.1%
Total	37,456	100.0%	37,484	100.0%	35,869	100.0%	35,677	100.0%	35,632	100.0%
Outcomes										
CTE Courses										
Successful	4,509	72.1%	4,796	73.3%	4,377	75.9%	4,457	76.2%	4,350	78.7%
Retained	5,412	86.5%	5,669	86.6%	5,028	87.2%	5,118	87.5%	4,883	88.3%
Total	6,258	100.0%	6,545	100.0%	5,766	100.0%	5,849	100.0%	5,527	100.0%
All Others										
Successful	21,330	68.4%	21,774	70.4%	21,219	70.5%	21,125	70.8%	21,417	71.1%
Retained	26,704	85.6%	26,789	86.6%	26,123	86.8%	25,489	85.5%	25,660	85.2%
Total	31,198	100.0%	30,939	100.0%	30,103	100.0%	29,828	100.0%	30,105	100.0%
Overall										
Successful	25,839	69.0%	26,570	70.9%	25,596	71.4%	25,582	71.7%	25,767	72.3%
Retained	32,116	85.7%	32,458	86.6%	31,151	86.8%	30,607	85.8%	30,543	85.7%
Total	37,456	100.0%	37,484	100.0%	35,869	100.0%	35,677	100.0%	35,632	100.0%

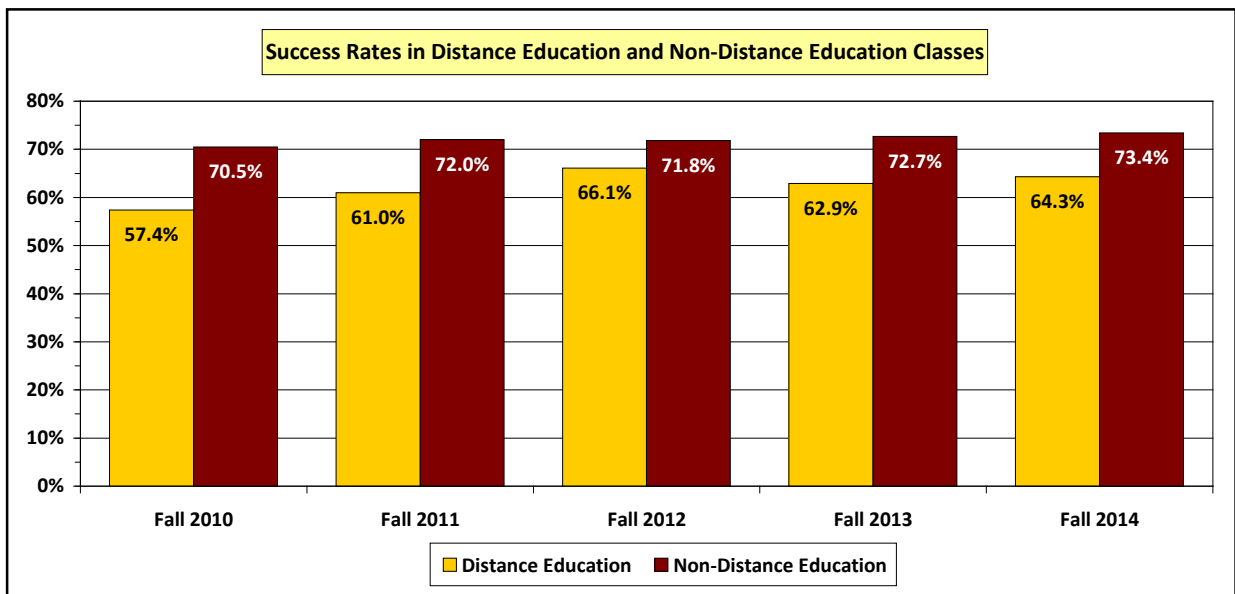
Source: Ventura County Community College District – Banner Administrative Data System: SDA Current Courses View Occupational Code (B, C, D, or E)

V. STUDENT ACHIEVEMENT

B-9. Success / Retention Rates by Mode of Delivery

Over the last five fall terms, Success Rates in D/E courses at VC have been considerably *lower* than in *all* other courses. Through a Title V Cooperative Grant (2010 – 2015), Ventura College is creating initiatives to address the lower success rates in D/E courses. A Summer Institute (as part of the grant’s Professional Development component) has been conducted each year to provide instructors with the latest strategies and pedagogies for increasing success rates in D/E classes. Additionally, a distance education orientation has been created to assist new D/E students familiarize themselves with the computer technology, software, and procedures associated with D/E classes.

Each semester, the Office of Research and Evaluation prepares a detailed report on student outcomes in all D/E classes. The reports present success and retention rates in each D/E section offered in the fall and spring terms. Success and retention rates in D/E courses are compared to the success and retention rates in the respective traditional courses. These reports are available on the Institutional Effectiveness webpage.



Ventura College – Course Outcomes by Mode of Delivery										
Fall Terms: 2010 through 2014										
Delivery Modality	Fall 2010		Fall 2011		Fall 2012		Fall 2013		Fall 2014	
	Count	Percnt	Count	Percnt	Count	Percnt	Count	Percnt	Count	Percnt
Distance Ed										
Successful	2,447	57.4%	2,264	61.0%	1,655	66.1%	2,288	62.9%	2,765	64.3%
Retained	3,389	79.5%	2,986	80.5%	2,064	82.4%	2,905	79.9%	3,400	79.1%
Total	4,264	100.0%	3,711	100.0%	2,504	100.0%	3,635	100.0%	4,300	100.0%
Non-D/E										
Successful	23,392	70.5%	24,306	72.0%	23,941	71.8%	23,294	72.7%	23,002	73.4%
Retained	28,727	86.5%	29,472	87.3%	29,087	87.2%	27,702	86.5%	27,143	86.6%
Total	33,192	100.0%	33,773	100.0%	33,365	100.0%	32,042	100.0%	31,332	100.0%
Overall										
Successful	25,839	69.0%	26,570	70.9%	25,596	71.4%	25,582	71.7%	25,767	72.3%
Retained	32,116	85.7%	32,458	86.6%	31,151	86.8%	30,607	85.8%	30,543	85.7%
Total	37,456	100.0%	37,484	100.0%	35,869	100.0%	35,677	100.0%	35,632	100.0%

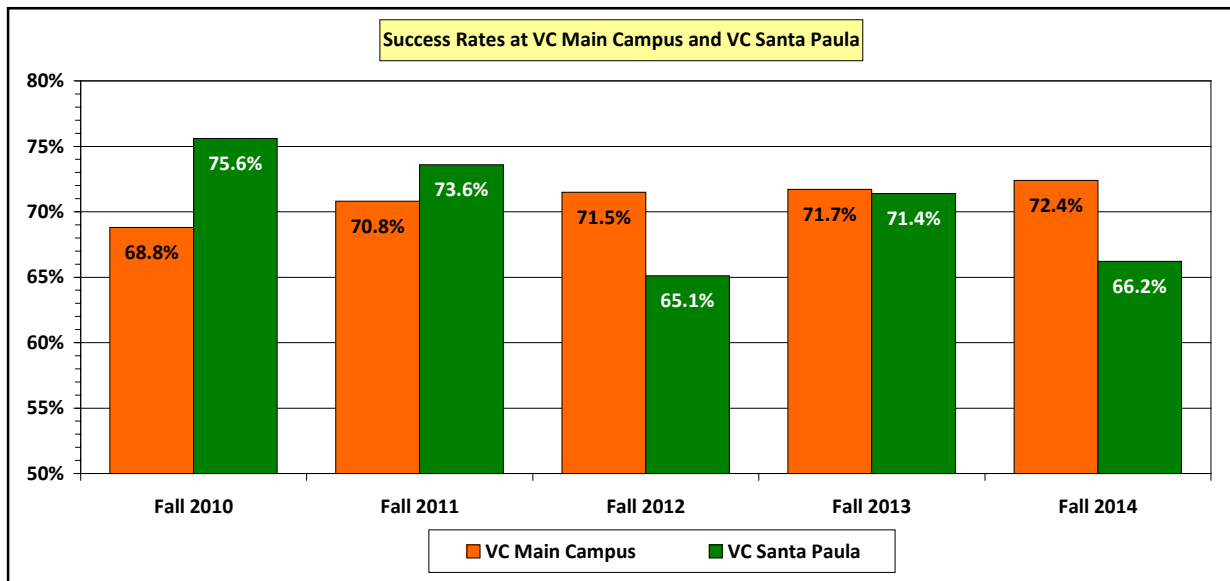
Source: Ventura County Community College District – Banner Administrative Data System: SDA Current Courses View
Method of Instr Code (Q = Distance Education)

V. STUDENT ACHIEVEMENT

B-10. Success / Retention Rates at VC Santa Paula

For over 35 years, Ventura College has maintained a satellite campus in the City of Santa Paula to serve the post-secondary educational needs of residents of the Santa Clara River Valley (SCRV). The SCRIV encompasses the cities of Fillmore and Santa Paula and includes the unincorporated area of Piru. As of 2010, the population in the Santa Paula and Fillmore CCDs (census county divisions) is 51,548.

For many years the college's educational site at Santa Paula was known as the East Campus. In fall 2011, the site was renamed **Ventura College – Santa Paula**. In the table below, enrollment numbers for **VC Santa Paula** also include enrollments for courses that were offered at Santa Paula High School and at Fillmore High School. In **fall 2014**, Success Rates for courses at **VC Santa Paula** were 3.7 percentage points **lower** than courses offered at the **VC Main Campus** (and other off-campus sites).



Ventura College – Course Outcomes at Ventura College – Santa Paula										
Fall Terms: 2010 through 2014										
Instruction Site	Fall 2010		Fall 2011		Fall 2012		Fall 2013		Fall 2014	
	Count	Perct	Count	Perct	Count	Perct	Count	Perct	Count	Perct
Santa Paula	960	2.6%	859	2.3%	684	1.9%	611	1.7%	757	2.1%
VC Main	36,496	97.4%	36,625	97.7%	35,185	98.1%	35,066	98.3%	34,875	97.9%
Total Seats	37,456	100.0%	37,484	100.0%	35,869	100.0%	35,677	100.0%	35,632	100.0%
Santa Paula										
Successful	726	75.6%	632	73.6%	445	65.1%	436	71.4%	501	66.2%
Retained	873	90.9%	785	91.4%	582	85.1%	518	84.8%	644	85.1%
Total	960	100.0%	859	100.0%	684	100.0%	611	100.0%	757	100.0%
VC Main										
Successful	25,113	68.8%	25,938	70.8%	25,151	71.5%	25,146	71.7%	25,266	72.4%
Retained	31,243	85.6%	31,673	86.5%	30,569	86.9%	30,089	85.8%	29,899	85.7%
Total	36,496	100.0%	36,625	100.0%	35,185	100.0%	35,066	100.0%	34,875	100.0%
Overall										
Successful	25,839	69.0%	26,570	70.9%	25,596	71.4%	25,582	71.7%	25,767	72.3%
Retained	32,116	85.7%	32,458	86.6%	31,151	86.8%	30,607	85.8%	30,543	85.7%
Total	37,456	100.0%	37,484	100.0%	35,869	100.0%	35,677	100.0%	35,632	100.0%

Source: Ventura County Community College District – Banner Administrative Data System: SDA Current Courses View

V. STUDENT ACHIEVEMENT

C-1. Progress Rates in English Composition

Ventura College English Composition Series			
Academic Level	Course ID	Course Title	Units
Transfer to UC and CSU	ENGL V01A *	English Composition	5
Degree Applicable – AA/AS	ENGL V02	Fundamentals of English Composition	5
Non-Degree Applicable	ENGL V03	Basic English Composition	5

* Successful completion meets the Written Expression competency requirement for the AA/AS Degree.

Ventura College – Student Progress Rates in English Composition Fall Term Cohorts: 2010, 2011, 2012, and 2013														
Enrolled and Outcomes	Fall 2010 Cohort			Fall 2011 Cohort			Fall 2012 Cohort			Fall 2013 Cohort				
	Initial	2nd	3rd	Initial	2nd	3rd	Initial	2nd	3rd	Initial	2nd	3rd		
	F '10	S '11	F '11	F '11	S '12	F '12	F '12	S '13	F '13	F '13	S '14	F '14		
ENGL V02	HLE	HLE	V02	HLE	HLE	V02	HLE	HLE	V02	HLE	HLE	V02	HLE	HLE
Enrolled	543	191	275	572	195	294	603	241	313	497	266	307		
Successful	399	156	236	431	147	234	430	178	240	401	200	250		
Succ. Rate	73%	82%	86%	75%	75%	80%	71%	74%	77%	81%	75%	81%		
Cont. Rate	---	48%	69%	---	45%	68%	---	56%	73%	---	66%	77%		
Prog. Rate	---	29%	43%	---	26%	41%	---	30%	40%	---	40%	50%		
ENGL V03	HLE	HLE	V03	HLE	HLE	V03	HLE	HLE	V03	HLE	HLE	V03	HLE	HLE
Enrolled	289	159	263	290	171	275	350	184	295	304	165	264		
Successful	219	121	218	244	117	212	262	129	227	233	118	207		
Succ. Rate	76%	76%	83%	84%	68%	77%	75%	70%	77%	77%	72%	78%		
Cont. Rate	---	73%	117%	---	70%	113%	---	70%	113%	---	71%	113%		
Prog. Rate	---	42%	75%	---	40%	73%	---	37%	65%	---	39%	68%		

Source: CCCC Basic Skills Progress Tracker – June 16, 2015

Web Link: http://datamart.cccc.edu/Outcomes/BasicSkills_Cohort_Tracker.aspx

Fall Term Cohorts

Initial Term	Enrolled Successful Succ. Rate	Total students enrolled in the initial courses (ENGL V02 or ENGL V03). Number of students who successfully completed the course; these students comprise the fall cohorts that are tracked for one year. Number of Successful divided by number of Enrolled multiplied by 100
2nd Term	Enrolled Successful Succ. Rate Continue % Progress %	Number of students in the fall term cohort who enrolled in one/more higher level English (HLE) courses in the following spring term. Number of students who successfully completed the course/s Number of Successful <i>divided by</i> number of Enrolled <i>multiplied by</i> 100 Number of 2nd Term Enrolled <i>divided by</i> number of Initial Term Successful <i>times</i> 100 Number of Successful <i>divided by</i> number in the fall cohort <i>multiplied by</i> 100
3rd Term	Enrolled Successful Succ. Rate Continue % Progress %	Cumulative number of students in the fall term cohort who enrolled in one/more higher level English (HLE) courses by the following fall term. Cumulative number of students who successfully completed the course/s Number of Successful <i>divided by</i> number of Enrolled <i>multiplied by</i> 100 Number of 3rd Term Enrolled <i>divided by</i> number of Initial Term Successful <i>times</i> 100 Number of Successful <i>divided by</i> number in the fall cohort <i>multiplied by</i> 100

Note: The numbers of enrolled and successful students in terms subsequent to the initial term are **cumulative**, i.e., Enrolled and Successful students in the 3rd term include Enrolled and Successful students in the 2nd term.

V. STUDENT ACHIEVEMENT

C-2. Progress Rates in Mathematics

Ventura College Mathematics Sequence			
Academic Level	Course ID	Course Title	Units
Transfer to UC and CSU	MATH V04	College Algebra	4
Degree Applicable – AA/AS	MATH V03 *	Intermediate Algebra	5
Non-Degree Applicable	MATH V01	Elementary Algebra	5

* Successful completion meets the Mathematics competency requirement for the AA/AS Degree.

Ventura College – Student Progress Rates in Mathematics												
Fall Term Cohorts: 2010, 2011, 2012, and 2013												
Enrolled and Outcomes	Fall 2010 Cohort			Fall 2011 Cohort			Fall 2012 Cohort			Fall 2013 Cohort		
	Initial	2nd	3rd	Initial	2nd	3rd	Initial	2nd	3rd	Initial	2nd	3rd
	F '10	S '11	F '11	F '11	S '12	F '12	F '12	S '13	F '13	F '13	S '14	F '14
MATH	V03	HLM	HLM	V03	HLM	HLM	V03	HLM	HLM	V03	HLM	HLM
Enrolled	397	110	142	480	121	165	486	141	181	480	149	192
Successful	249	67	93	280	67	109	280	90	123	284	84	130
Succ. Rate	63%	61%	65%	58%	55%	66%	58%	64%	68%	59%	57%	68%
Cont. Rate	---	44%	57%	---	43%	59%	---	50%	65%	---	52%	68%
Prog. Rate	---	17%	23%	---	14%	23%	---	19%	25%	---	18%	27%
MATH	V01	HLM	HLM	V01	HLM	HLM	V01	HLM	HLM	V01	HLM	HLM
Enrolled	362	112	168	310	82	142	426	138	215	423	182	264
Successful	188	64	108	160	49	88	221	75	131	242	103	167
Succ. Rate	52%	57%	64%	52%	60%	62%	52%	54%	61%	57%	57%	63%
Cont. Rate	---	60%	89%	---	51%	89%	---	62%	97%	---	75%	109%
Prog. Rate	---	18%	30%	---	16%	28%	---	18%	31%	---	24%	39%

Source: CCCC Basic Skills Progress Tracker – June 16, 2015

Web Link: http://datamart.cccc.edu/Outcomes/BasicSkills_Cohort_Tracker.aspx

Fall Term Cohorts

Initial Term	Enrolled Successful Succ. Rate	Total students enrolled in the initial courses (MATH V03 or MATH V01). Number of students who successfully completed the course; these students comprise the fall cohorts that are tracked for one year. Number of Successful divided by number of Enrolled multiplied by 100
2nd Term	Enrolled Successful Succ. Rate Continue % Progress %	Number of students in the fall term cohort who enrolled in one/more higher level math (HLM) courses in the following spring term. Number of students who successfully completed the course/s Number of Successful <i>divided by</i> number of Enrolled <i>multiplied by</i> 100 Number of 2nd Term Enrolled <i>divided by</i> number of Initial Term Successful <i>times</i> 100 Number of Successful <i>divided by</i> number in the fall cohort <i>multiplied by</i> 100
3rd Term	Enrolled Successful Succ. Rate Continue % Progress %	Cumulative number of students in the fall term cohort who in enrolled one/more higher level math (HLM) courses by the following fall term. Cumulative number of students who successfully completed the course/s Number of Successful <i>divided by</i> number of Enrolled <i>multiplied by</i> 100 Number of 3rd Term Enrolled <i>divided by</i> number of Initial Term Successful <i>times</i> 100 Number of Successful <i>divided by</i> number in the fall cohort <i>multiplied by</i> 100

Note: The numbers of enrolled and successful students in terms subsequent to the initial term are **cumulative**, i.e., Enrolled and Successful students in the 3rd term include Enrolled and Successful students in the 2nd term.

V. STUDENT ACHIEVEMENT

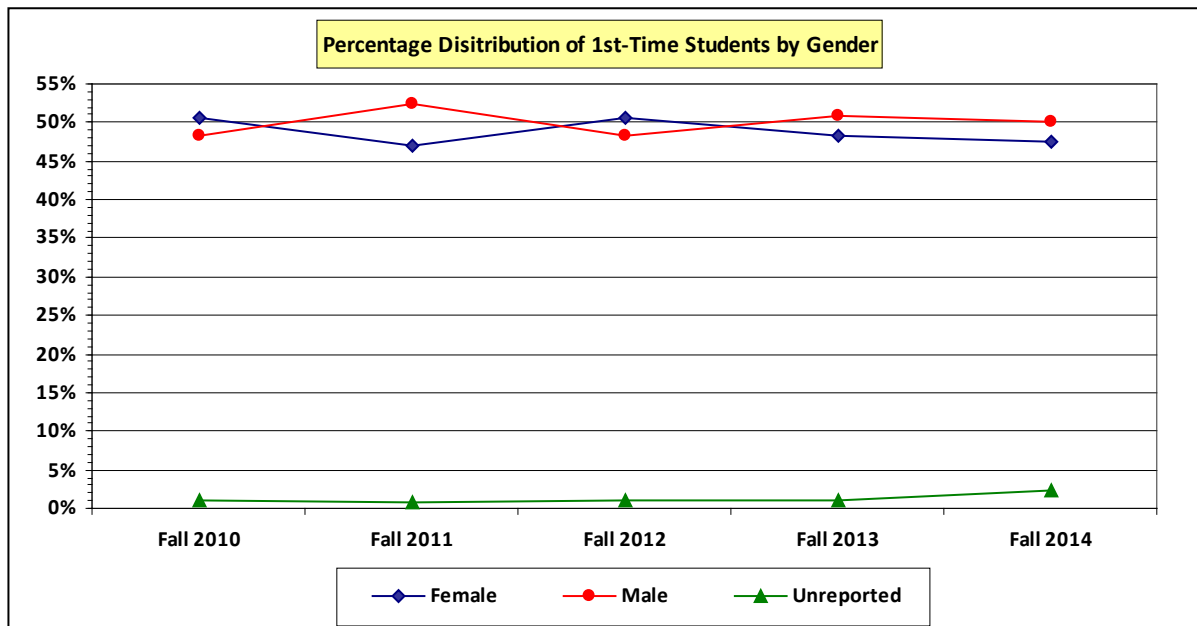
D-1. 1st-Time Students – Gender

Over the past decade, the proportion of **female** students attending Ventura College has been about **55%** compared to **45%** for **males**.

For **first-time** students, however, the percentages of females and males have been within **two to three** percentage points of each other. In the table below, the campus-wide percentages of females and males in **fall 2014** are compared to the percentages of females and males who were **first-time** students in fall 2014. In the general student population, the percentage of **females** is **10** percentage points **higher** than for males (54.7% females versus 44.2% males); however, among **first-time** students, the percentage of **males** is **2.6** percentage points **higher** than for females (50.2% males; 47.6% females).

Ventura College Fall 2014 – 4th Week Census				
Gender	All Students		First-Time Students	
	Number	Percent	Number	Percent
Females	7,108	54.7%	1,107	47.6%
Males	5,733	44.2%	1,169	50.2%
Unreported	148	1.1%	52	2.2%
Totals	12,989	100.0%	2,328	100.0%

Because second-term and third-term **persistence rates** for **first-time male** students are roughly **five (5)** percentage points **less** than the corresponding rates for females, the percentage of males in the general student population falls behind that of females.



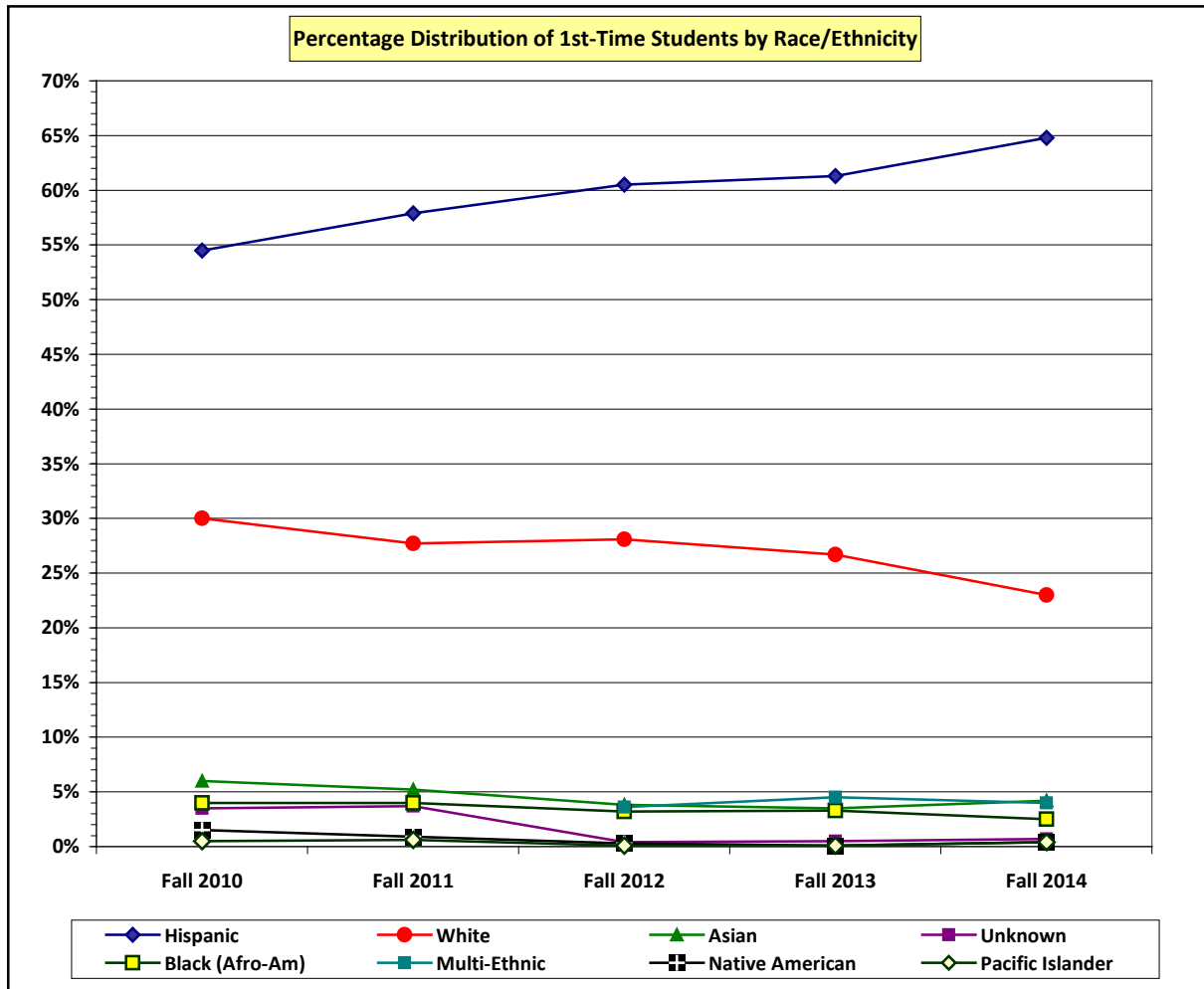
Ventura College – First-Time Students by Gender Fall Terms: 2010 through 2014										
Gender	Fall 2010		Fall 2011		Fall 2012		Fall 2013		Fall 2014	
	Count	Percnt	Count	Percnt	Count	Percnt	Count	Percnt	Count	Percnt
Female	1,273	50.6%	1,218	46.9%	1,417	50.7%	1,448	48.2%	1,107	47.6%
Male	1,218	48.4%	1,359	52.3%	1,346	48.2%	1,524	50.8%	1,169	50.2%
Unreported	25	1.0%	22	0.8%	30	1.1%	30	1.0%	52	2.2%
Totals	2,516	100.0%	2,599	100.0%	2,793	100.0%	3,002	100.0%	2,328	100.0%

Source: Ventura County Community College District – Banner Administrative Data System: SDA Student Term Data View

V. STUDENT ACHIEVEMENT

D-2. 1st-Time Students – Race/Ethnicity

In fall 2014, 65% of first-time students at Ventura College were **Hispanic**, while 57% of the **total** student population was Hispanic. The percentage of **first-time White** students continues to decline – from 36% in fall 2006 to 23% in fall 2014. The percentage of first-time Asian students is also declining.



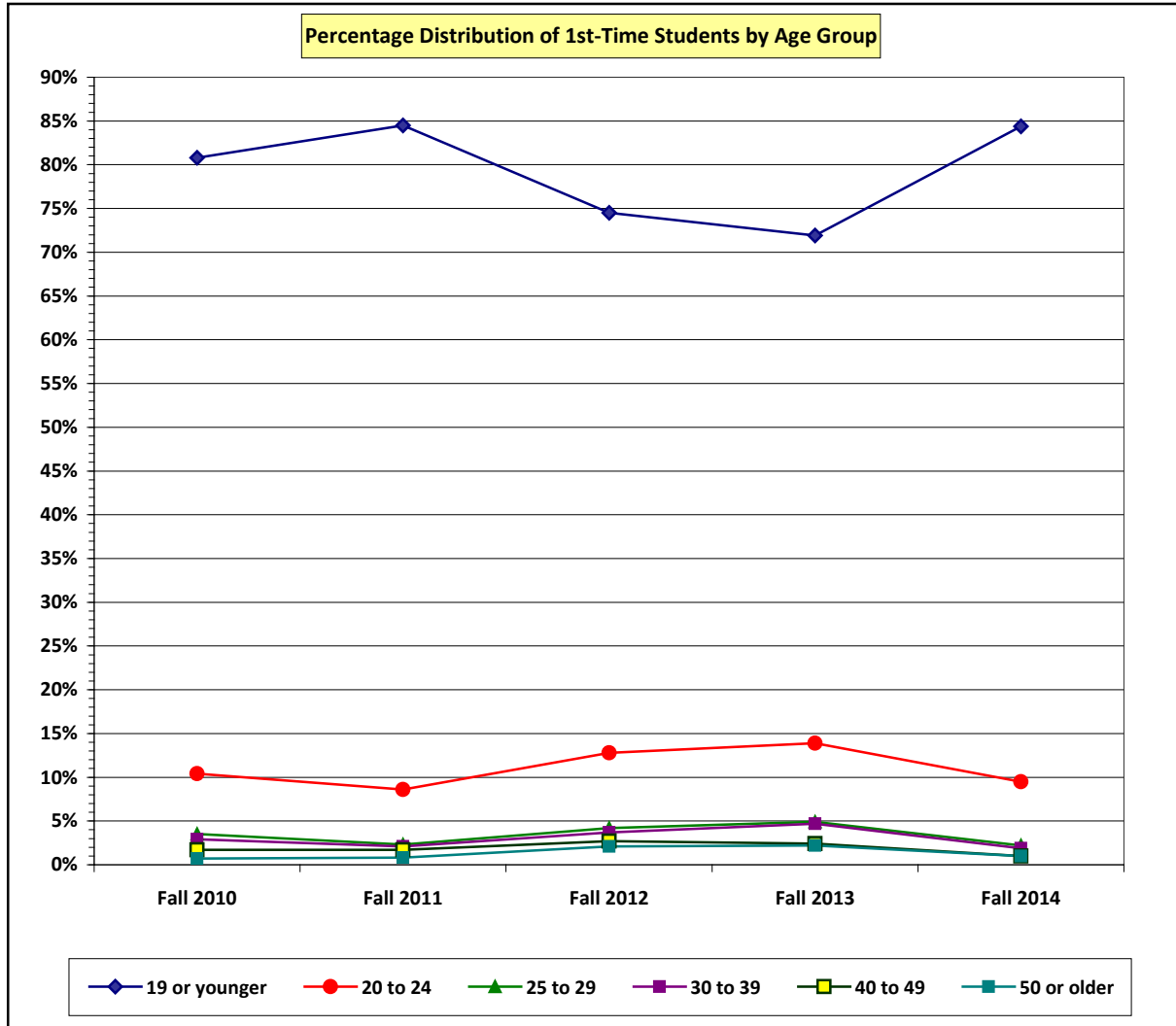
Ventura College – First-Time Students by Race/Ethnicity Fall Terms: 2010 through 2014										
Race or Ethnicity	Fall 2010		Fall 2011		Fall 2012		Fall 2013		Fall 2014	
	Count	Perct	Count	Perct	Count	Perct	Count	Perct	Count	Perct
Asian	150	6.0%	136	5.2%	105	3.8%	104	3.5%	97	4.2%
Black	101	4.0%	103	4.0%	89	3.2%	99	3.3%	59	2.5%
Hispanic	1,370	54.5%	1,506	57.9%	1,691	60.5%	1,840	61.3%	1,509	64.8%
Native Amer.	37	1.5%	24	0.9%	9	0.3%	4	0.1%	9	0.4%
Pacific Island	13	0.5%	14	0.6%	2	0.1%	5	0.1%	9	0.4%
Multi-Ethnic	--	--	--	--	100	3.6%	134	4.5%	94	4.0%
White	756	30.0%	719	27.7%	787	28.1%	802	26.7%	535	23.0%
Unknown	89	3.5%	97	3.7%	10	0.4%	14	0.5%	16	0.7%
Totals	2,516	100.0%	2,599	100.0%	2,793	100.0%	3,002	100.0%	2,328	100.0%

Source: Ventura County Community College District – Banner Administrative Data System: SDA Student Term Data View

V. STUDENT ACHIEVEMENT

D-3. 1st-Time Students – Age Group

As expected, the overwhelming majority of **first-time** students at Ventura College are **under 25** years of age (in **fall 2014**, **94%** of first-time students were less than 25 years old).



Ventura College – First-Time Students by Age Group										
Fall Terms: 2010 through 2014										
Age Group (In Years)	Fall 2010		Fall 2011		Fall 2012		Fall 2013		Fall 2014	
	Count	Percnt	Count	Percnt	Count	Percnt	Count	Percnt	Count	Percnt
19 / younger	2,034	80.8%	2,197	84.5%	2,079	74.5%	2,159	71.9%	1,964	84.4%
20 to 24	262	10.4%	224	8.6%	356	12.8%	417	13.9%	220	9.5%
25 to 29	87	3.5%	59	2.3%	118	4.2%	146	4.9%	52	2.2%
30 to 39	72	2.9%	54	2.1%	104	3.7%	141	4.7%	45	1.9%
40 to 49	43	1.7%	44	1.7%	76	2.7%	73	2.4%	24	1.0%
50 or older	18	0.7%	21	0.8%	60	2.1%	66	2.2%	23	1.0%
Totals	2,516	100.0%	2,599	100.0%	2,793	100.0%	3,002	100.0%	2,328	100.0%

Source: Ventura County Community College District – Banner Administrative Data System: SDA Student Term Data View

V. STUDENT ACHIEVEMENT

D-4. 1st-Time Students – Economic Status

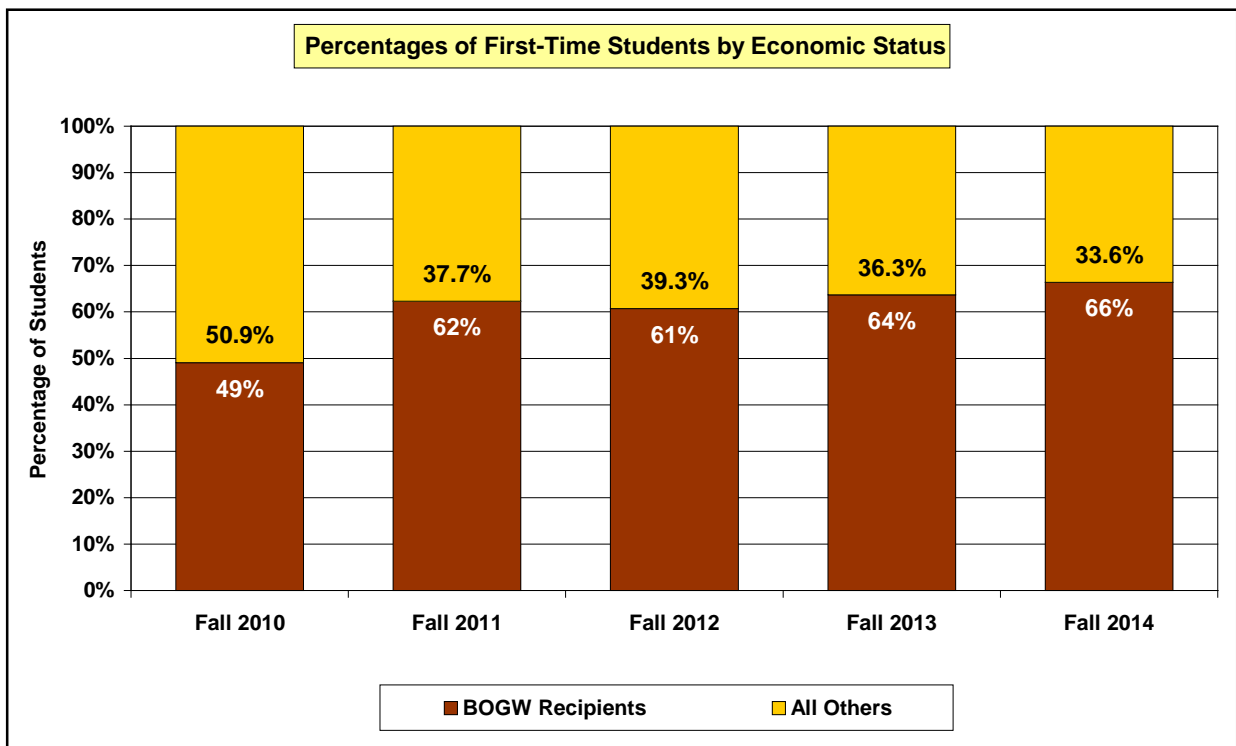
In this analysis, students receiving a Board of Governors Waiver (BOGW) are considered to be “economically disadvantaged.” At Ventura College, the percentage of **first-time** students receiving BOG Waivers has been steadily increasing over the last five fall terms. Most likely, the main factor contributing to this increase in the percentage of students receiving BOG Waivers is the Ventura College Promise

The Ventura College Promise is a program sponsored by the Ventura College Foundation that is designed:

- To remove the economic barriers to education for graduating Ventura County high school seniors
- To improve the college-going rate in Ventura County
- To enhance the quality of the workforce in Ventura County

The "Promise" is that all Ventura County high school graduates will have their enrollment fees covered during their **first year** of attendance at Ventura College. This same promise is extended to students who have successfully completed their GED requirements or who have completed the coursework for high school, but have not yet passed their exit exam. Expenses covered by the Ventura College Promise include the per-unit cost of classes, the Student Rep fee, the Health fee, and the Student Center fee.

To qualify for the Ventura College Promise, Ventura County high school graduates must complete the FAFSA and the BOG Fee Waiver Application. Students who meet the BOGW criteria have their unit enrollment costs waived and the Ventura College Promise only pays the remaining student-related fees.



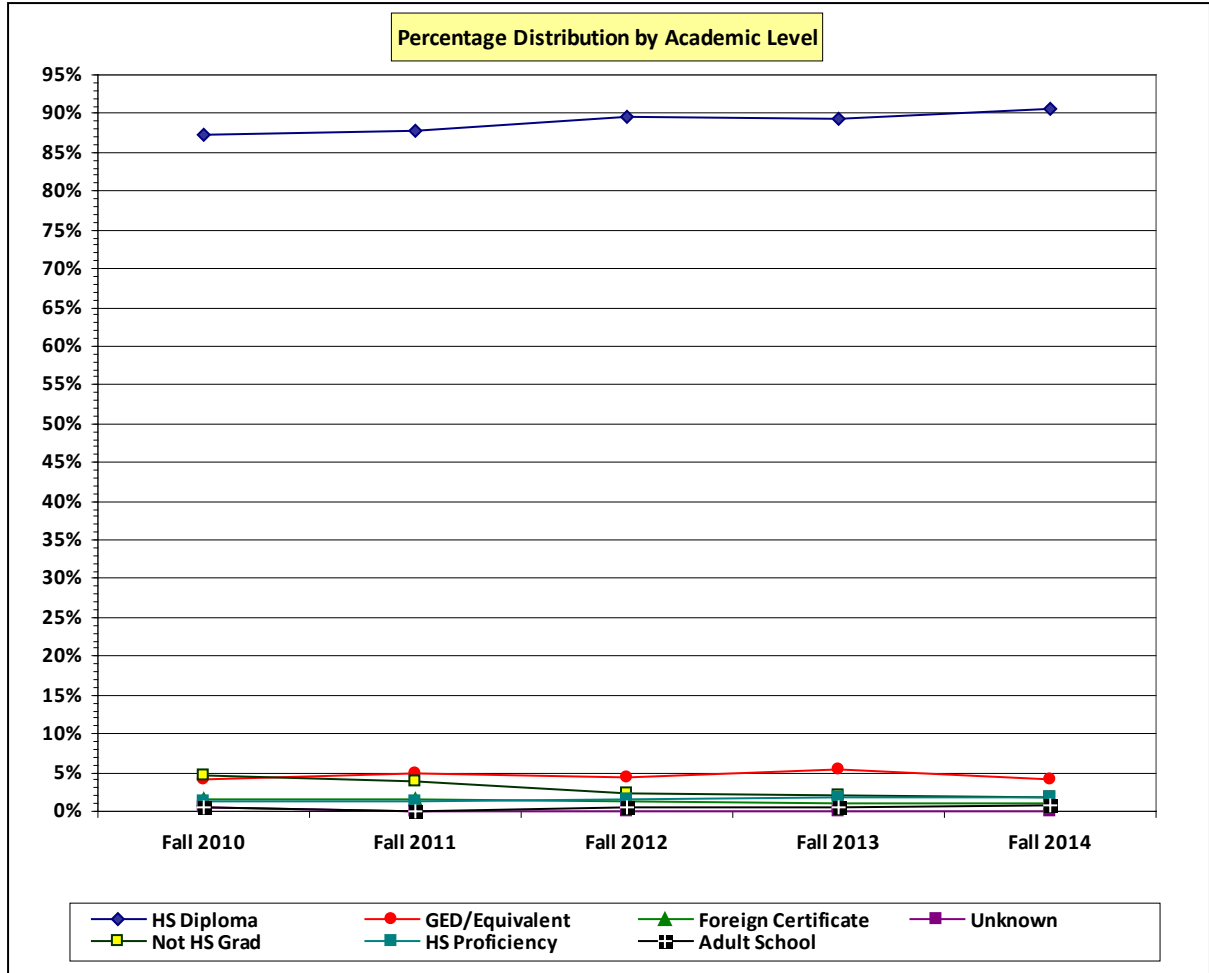
Ventura College – First-Time Students by Economic Status										
Fall Terms: 2010 through 2014										
Economic Status	Fall 2010		Fall 2011		Fall 2012		Fall 2013		Fall 2014	
	Count	Percnt	Count	Percnt	Count	Percnt	Count	Percnt	Count	Percnt
BOGW	1,235	49.1%	1,620	62.3%	1,696	60.7%	1,913	63.7%	1,546	66.4%
All Others	1,281	50.9%	979	37.7%	1,097	39.3%	1,089	36.3%	782	33.6%
Totals	2,516	100.0%	2,599	100.0%	2,793	100.0%	3,002	100.0%	2,328	100.0%

Source: Ventura County Community College District – Banner Administrative Data System: SDA Student Term Data View

V. STUDENT ACHIEVEMENT

D-5. 1st-Time Students – Academic Level

Academic Level refers to a student’s educational background at the time that he/she applies to VC. Most first-time students at VC are high school graduates (91% in fall 2014). About 4% of students possess a GED or a HS Equivalency.



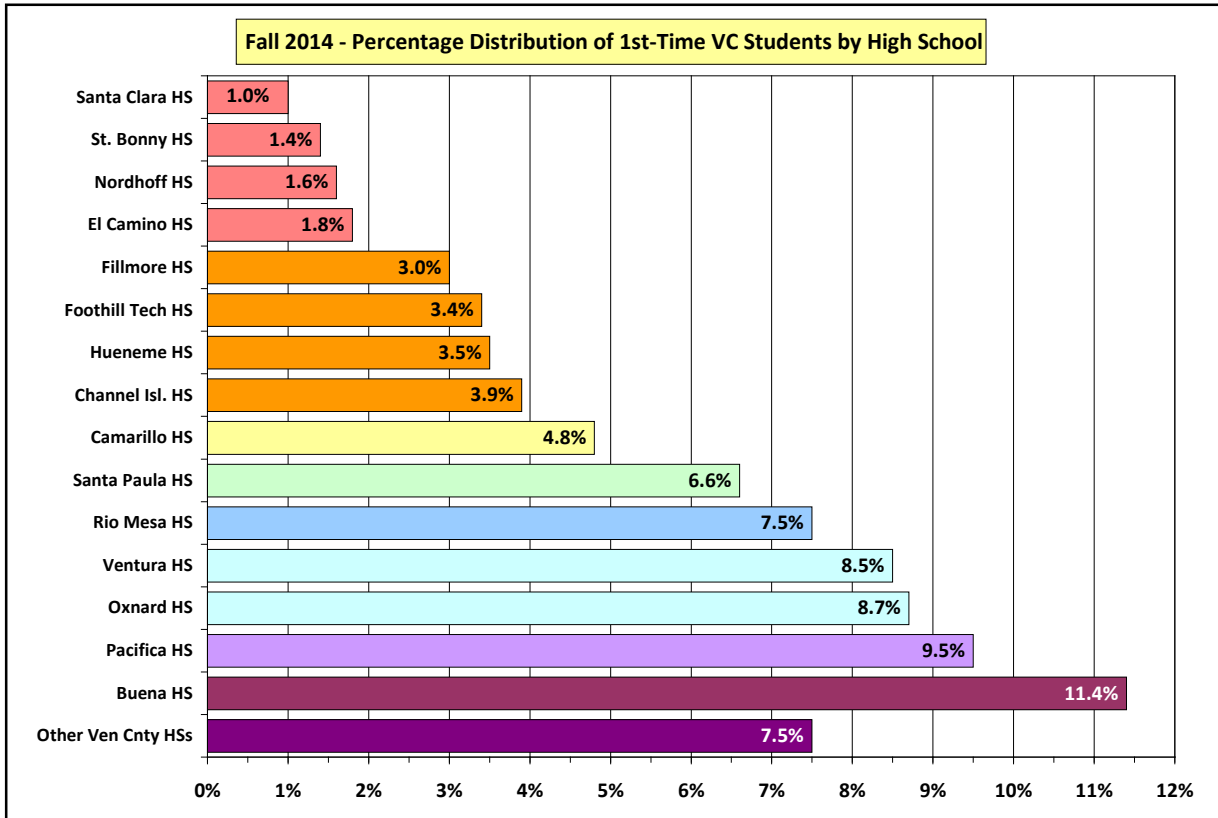
Ventura College – First-Time Students by Academic Level										
Fall Terms: 2010 through 2014										
Academic Level	Fall 2010		Fall 2011		Fall 2012		Fall 2013		Fall 2014	
	Count	Percnt	Count	Percnt	Count	Percnt	Count	Percnt	Count	Percnt
Not HS Grad	119	4.7%	100	3.8%	66	2.4%	61	2.0%	43	1.8%
Special Admit	2	0.1%	12	0.5%	11	0.4%	3	0.1%	5	0.2%
Adult School	9	0.4%	3	0.1%	12	0.4%	11	0.4%	17	0.7%
HS Diploma	2,195	87.2%	2,279	87.7%	2,499	89.5%	2,684	89.4%	2,108	90.5%
GED/Equiv.	103	4.1%	125	4.8%	121	4.3%	159	5.3%	93	4.0%
HS Proficient	36	1.4%	36	1.4%	44	1.6%	51	1.7%	37	1.7%
Foreign Cert.	40	1.6%	41	1.6%	39	1.4%	33	1.1%	25	1.1%
Unknown	12	0.5%	3	0.1%	1	0.0%	0	0.0%	0	0.0%
Totals	2,516	100.0%	2,599	100.0%	2,793	100.0%	3,002	100.0%	2,328	100.0%

Source: Ventura County Community College District – Banner Administrative Data System: SDA Student Term Data View

V. STUDENT ACHIEVEMENT

D-6. 1st-Time Students – Ventura County High Schools

In fall 2014, 84% of first-time students at Ventura College had attended a high school in Ventura County.



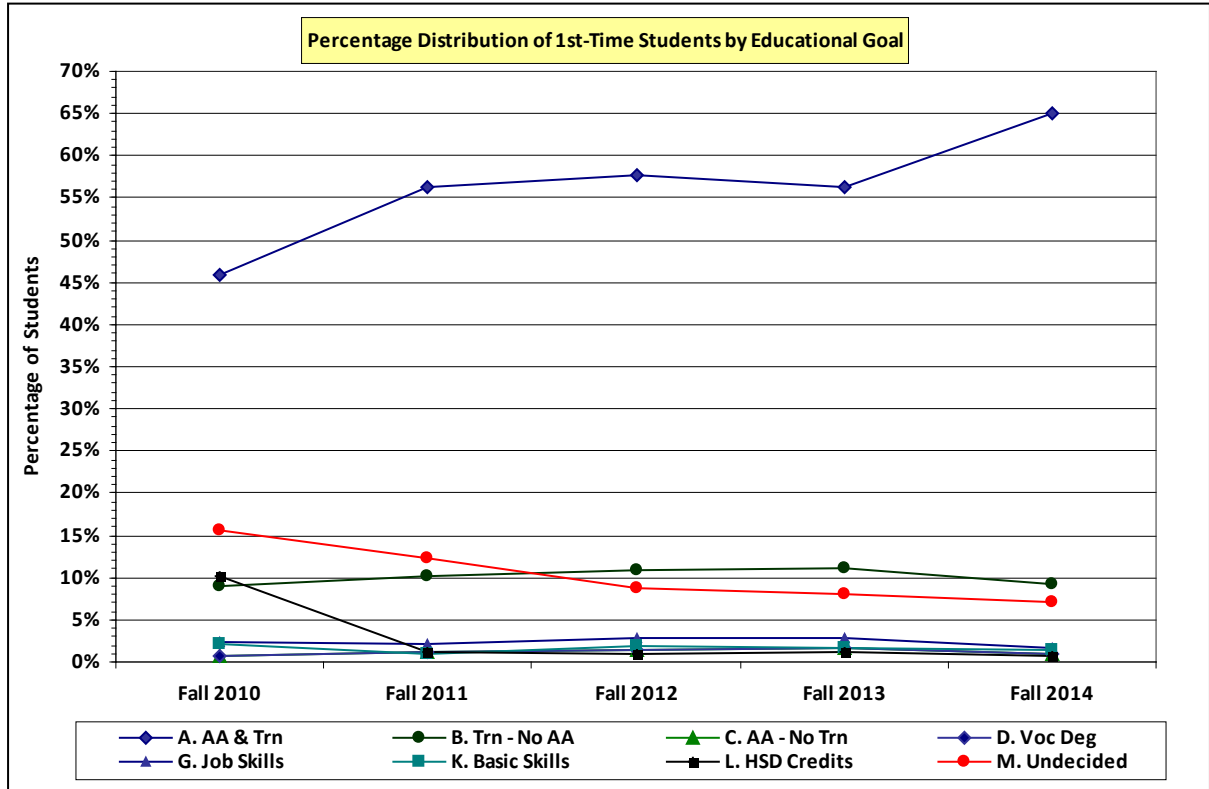
Ventura College – First-Time Students by Ventura County High School Fall Terms: 2010 through 2014										
High School	Fall 2010		Fall 2011		Fall 2012		Fall 2013		Fall 2014	
	Count	Perct	Count	Perct	Count	Perct	Count	Perct	Count	Perct
Buena	246	9.8%	281	10.8%	274	9.8%	282	9.4%	266	11.4%
Camarillo	115	4.6%	108	4.2%	108	3.9%	93	3.1%	111	4.8%
Channel Isl.	70	2.8%	82	3.2%	116	4.2%	125	4.2%	91	3.9%
El Camino	47	1.9%	44	1.7%	57	2.0%	73	2.4%	43	1.8%
Fillmore	106	4.2%	108	4.2%	90	3.2%	126	4.2%	69	3.0%
Foothill	73	2.9%	82	3.2%	73	2.6%	88	2.9%	78	3.4%
Hueneme	62	2.5%	86	3.3%	116	4.2%	88	2.9%	82	3.5%
Nordhoff	72	2.9%	73	2.8%	75	2.7%	76	2.5%	37	1.6%
Oxnard	225	8.9%	277	10.7%	282	10.1%	238	7.9%	202	8.7%
Pacifica	205	8.1%	251	9.7%	212	7.6%	254	8.5%	222	9.5%
Rio Mesa	158	6.3%	135	5.2%	193	6.9%	190	6.3%	175	7.5%
Santa Clara	40	1.6%	38	1.5%	39	1.4%	23	0.8%	24	1.0%
Santa Paula	177	7.0%	169	6.5%	188	6.7%	197	6.6%	154	6.6%
St. Bonaventure	58	2.3%	48	1.8%	47	1.6%	54	1.8%	32	1.4%
Ventura	217	8.6%	246	9.5%	193	6.9%	235	7.8%	199	8.5%
Other Ven. Cnty	241	9.6%	216	8.3%	214	7.6%	274	9.1%	174	7.5%
All Other HSs	404	16.0%	355	13.7%	516	18.5%	586	19.5%	369	15.8%
Totals	2,516	100.0%	2,599	100.0%	2,793	100.0%	3,002	100.0%	2,328	100.0%

Source: Ventura County Community College District – Banner Administrative Data System: SDA Student Term Data View

V. STUDENT ACHIEVEMENT

D-7. 1st-Time Students – Educational Goals

In fall 2014, 82% of first-time students indicated an Educational Goal of associate degree and/or transfer. Students choosing “Undecided” as a goal has decreased from 16% in fall 2010 to 7% in fall 2014.



Ventura College – First-Time Students by Educational Goal
Fall Terms: 2010 through 2014

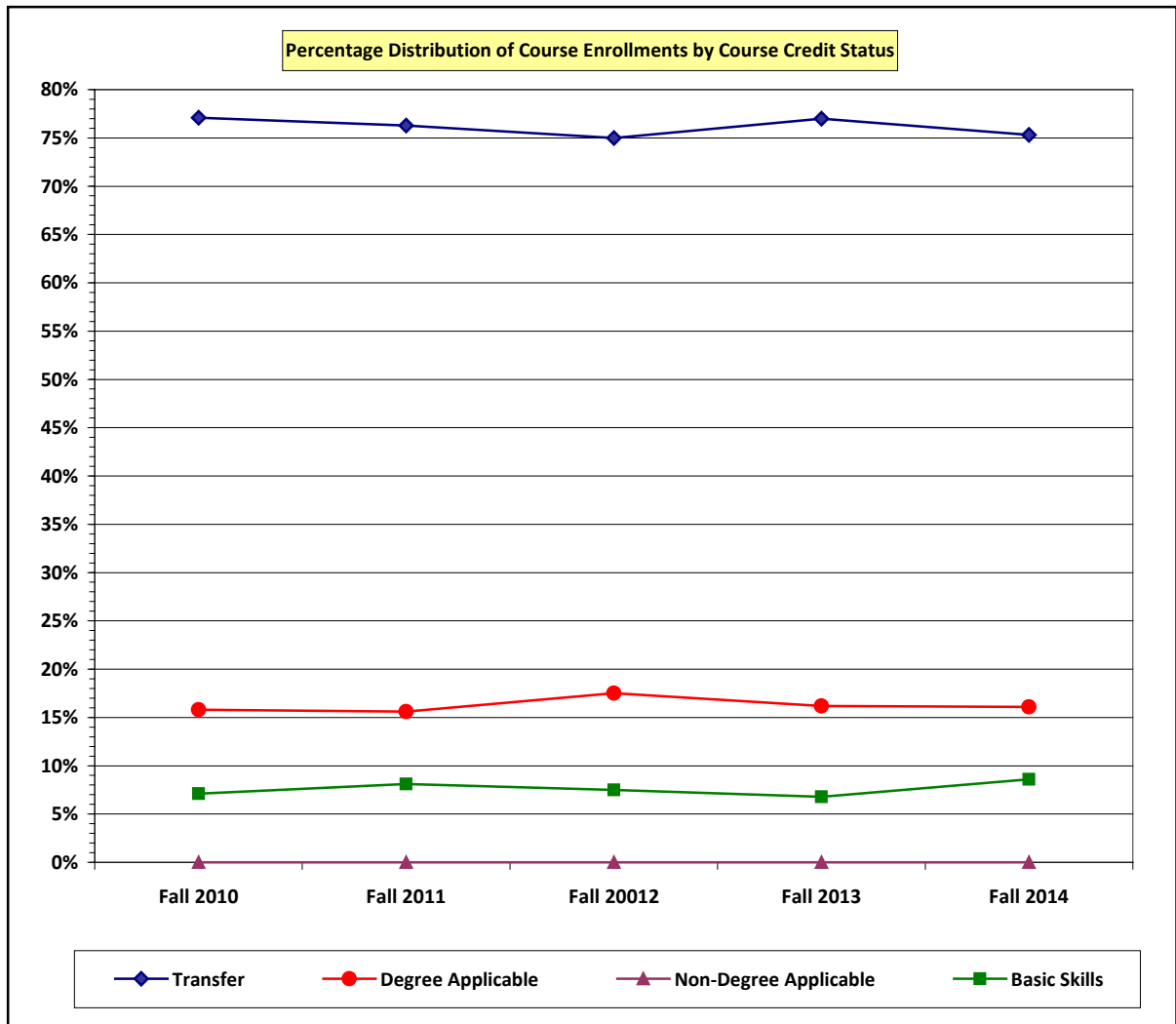
Educational Goal	Fall 2010		Fall 2011		Fall 2012		Fall 2013		Fall 2014	
	Count	Percent	Count	Percent	Count	Percent	Count	Percent	Count	Percent
A. AA & Trn	1,152	45.8%	1,465	56.4%	1,614	57.8%	1,691	56.3%	1,513	65.0%
B. Trn–no AA	230	9.1%	265	10.2%	301	10.8%	337	11.2%	214	9.2%
C. AA–no Trn	142	5.6%	193	7.4%	204	7.3%	255	8.5%	185	7.9%
D. Voc. Deg	15	0.6%	33	1.3%	40	1.4%	48	1.6%	22	0.9%
E. Voc. Cert	19	0.8%	19	0.7%	43	1.5%	51	1.7%	30	1.3%
F. Career Plan	50	2.0%	63	2.4%	39	1.4%	44	1.5%	37	1.6%
G. Job Skills	59	2.3%	58	2.2%	81	2.9%	83	2.8%	40	1.7%
H. Job Advan	13	0.5%	18	0.7%	26	0.9%	35	1.2%	9	0.4%
I. License	19	0.8%	24	0.9%	15	0.5%	27	0.9%	10	0.4%
J. Ed Develop	23	0.9%	30	1.2%	27	1.0%	38	1.3%	16	0.7%
K. Basic Skills	56	2.2%	25	1.0%	57	2.0%	47	1.6%	33	1.4%
L. HSD Credit	256	10.2%	31	1.2%	29	1.0%	39	1.3%	13	0.6%
M. Undecided	393	15.6%	319	12.3%	242	8.7%	241	8.0%	168	7.2%
N. Take Credit	1	0.0%	2	0.1%	---	---	---	---	---	---
O. 4-yr student	62	2.5%	53	2.0%	68	2.4%	65	2.2%	34	1.5%
X. Unreported	26	1.0%	1	0.0%	7	0.3%	1	0.0%	4	0.2%
Totals	2,516	100.0%	2,599	100.0%	2,793	100.0%	3,002	100.0%	2,328	100.0%

Source: Ventura County Community College District – Banner Administrative Data System: SDA Student Term Data View

V. STUDENT ACHIEVEMENT

D-8. 1st-Time Students – Enrollments by Course Credit Status

Over the past five fall terms, percentage enrollments by course credit status have remained relatively stable for first-time students. From fall 2010 to fall 2014, percentage enrollments in Transfer-Level courses has declined slightly (-1.8 percentage points) while percentage enrollments in Degree Applicable courses has increased by a minimal amount (+0.3 percentage point). Percentage enrollments in Basic Skills have increased from 7.1% (fall 2010) to 8.6% (fall 2014).



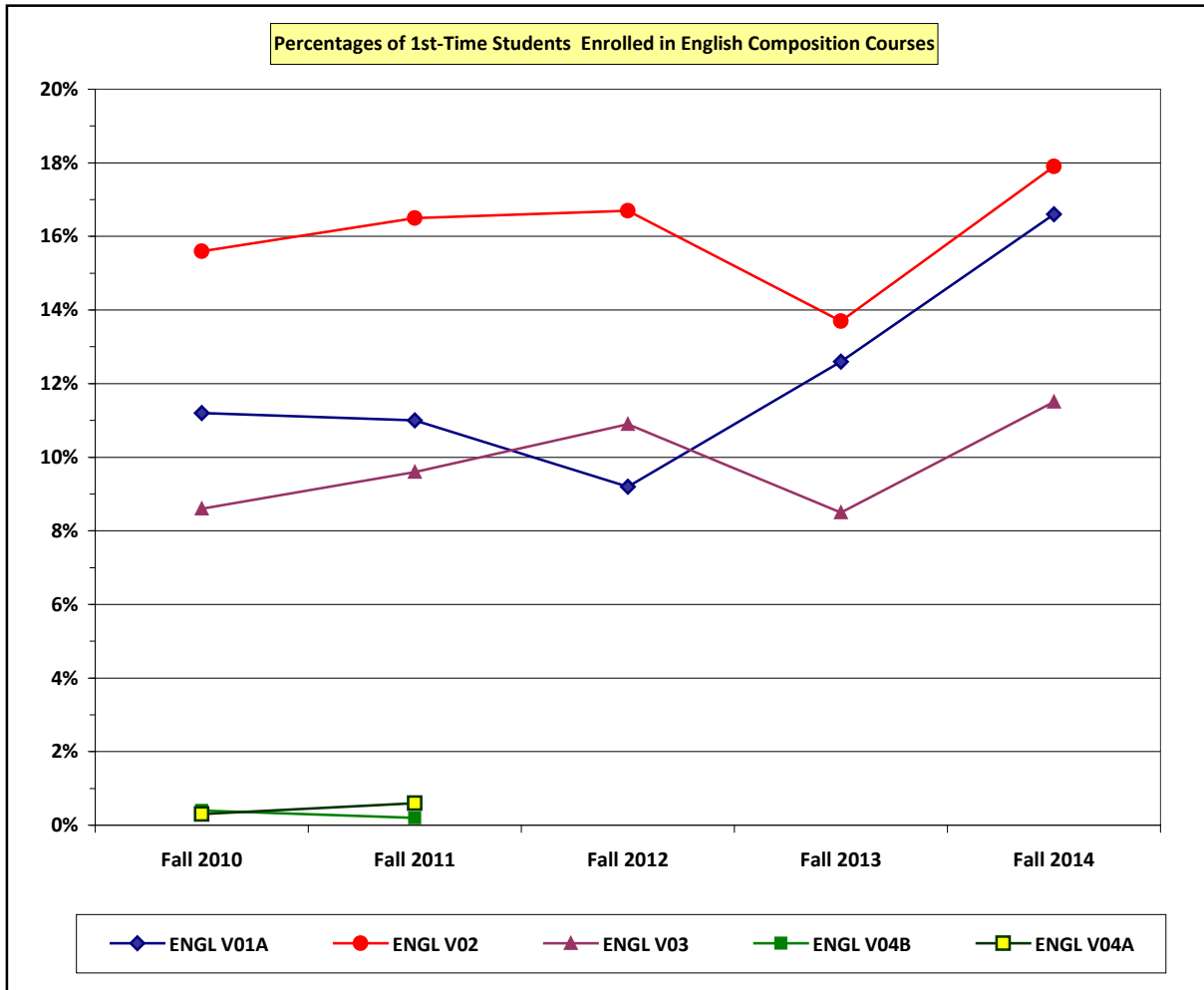
Ventura College – First-Time Students: Course Enrollments by Course Credit Status Fall Terms: 2010 through 2014										
Credit Status	Fall 2010		Fall 2011		Fall 2012		Fall 2013		Fall 2014	
	Count	Percnt	Count	Percnt	Count	Percnt	Count	Percnt	Count	Percnt
Transfer	6,448	77.1%	6,706	76.3%	6,704	75.0%	7,458	77.0%	6,121	75.3%
Degree App.	1,322	15.8%	1,376	15.6%	1,560	17.5%	1,568	16.2%	1,310	16.1%
Not Deg. App.	0	0.0%	1	0.0%	1	0.0%	0	0.0%	0	0.0%
Basic Skills	598	7.1%	715	8.1%	674	7.5%	654	6.8%	698	8.6%
Total	8,368	100.0%	8,797	100.0%	8,939	100.0%	9,680	100.0%	8,129	100.0%

Source: Ventura County Community College District – Banner Administrative Data System: SDA Current Courses View

V. STUDENT ACHIEVEMENT

D-9. 1st-Time Students – Enrollments in the English Composition Series

Enrollments in ENGL V01A (English Composition) by first-time Ventura College students has increased by 5.4 percentage points between fall 2010 (11.2%) and fall 2014 (16.6%). ENGL V04A and ENGL V04B (Writing Skills – Level A and B, respectively) have not been offered since fall 2011.



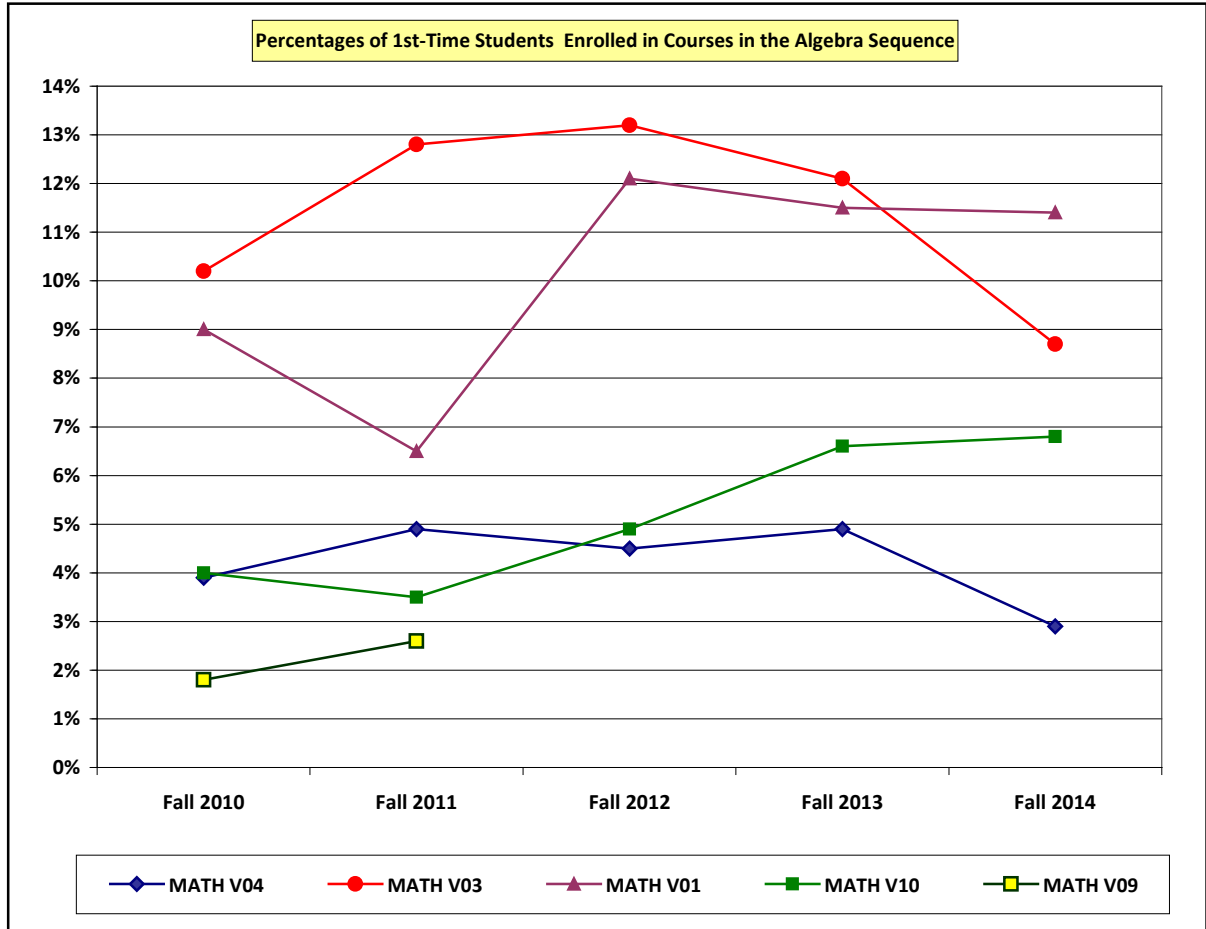
Ventura College – First-Time Students: Enrollments in the English Compositions Series Fall Terms: 2010 through 2014										
English Courses	Fall 2010		Fall 2011		Fall 2012		Fall 2013		Fall 2014	
	Count	Percnt	Count	Percnt	Count	Percnt	Count	Percnt	Count	Percnt
ENGL V01A	283	11.2%	287	11.0%	258	9.2%	377	12.6%	386	16.6%
ENGL V02	392	15.6%	429	16.5%	466	16.7%	412	13.7%	417	17.9%
ENGL V03	216	8.6%	249	9.6%	305	10.9%	256	8.5%	268	11.5%
ENGL V04B	10	0.4%	4	0.2%	---	---	---	---	---	---
ENGL V04A	7	0.3%	15	0.6%	---	---	---	---	---	---
Totals	908	36.1%	984	37.9%	10,29	36.8%	1,045	34.8%	1,071	46.0%
Tot. Students	2,516		2,599		2,793		3,002		2,328	

Source: Ventura County Community College District – Banner Administrative Data System: SDA Current Courses View

V. STUDENT ACHIEVEMENT

D-10. 1st-Time Students – Enrollments in the Algebra Sequence

In fall 2014, the highest percentages of enrollments in the Algebra Sequence by first-time students at Ventura College were MATH V01 (Elementary Algebra) at 11.4% and MATH V03 (Intermediate Algebra) at 8.7%. MATH V09 – Beginning Mathematics has not been offered since fall 2011.



MATH V04 – College Algebra MATH V03 – Intermediate Algebra MATH V01 – Elementary Algebra
 MATH V10 – Pre-Algebra MATH V09 – Beginning Mathematics

Ventura College – First-Time Students: Enrollments in the Algebra Sequence										
Fall Terms: 2010 through 2014										
Mathematics Courses	Fall 2010		Fall 2011		Fall 2012		Fall 2013		Fall 2014	
	Count	Perct	Count	Perct	Count	Perct	Count	Perct	Count	Perct
MATH V04	99	3.9%	127	4.9%	126	4.5%	146	4.9%	88	2.9%
MATH V03	257	10.2%	333	12.8%	368	13.2%	362	12.1%	262	8.7%
MATH V01	227	9.0%	169	6.5%	339	12.1%	345	11.5%	343	11.4%
MATH V10	101	4.0%	90	3.5%	136	4.9%	197	6.6%	204	6.8%
MATH V09	46	1.8%	67	2.6%	---	---	---	---	---	---
Totals	730	28.9%	786	30.3%	969	34.7%	1,050	35.1%	897	29.8%
Tot. Students	2,516		2,599		2,793		3,002		2,328	

Source: Ventura County Community College District – Banner Administrative Data System: SDA Current Courses View

V. STUDENT ACHIEVEMENT

E-1. Overall Persistence Rates of First-Time Students – Data Table

Over the past five fall terms, **Persistence Rates** of **first-time** students at Ventura College have remained fairly consistent. For the **fall 2013** cohort, the fall-to-spring rate was 80% and the fall-to-fall rate was 64%. Students were considered to have persisted if their subsequent-term enrollments were in any of the three VCCCD colleges (Moorpark, Oxnard, or Ventura).

Persistence rates for the fall 2010 cohort were computed for **ten** semesters, from fall 2010 to spring 2015. By spring 2015, 19% of the students in the fall 2010 cohort were still enrolled in one/more courses. Three of the cohorts (fall 2010, 2011, and 2012) were tracked for at least three years (six semesters, including the initial fall term). Persistence to the sixth term was 43% (fall 2010), 41% (fall 2011), and 42% (fall 2012). The chart on the following page graphically depicts the six-term persistence rates for these three cohorts.

Ventura College – First-Time Students: Persistence Rates										
Fall Terms: 2010 through 2014										
Initial Term	Initial-Term and Subsequent-Term Enrollments and Persistence Rates									
First-Time Students in:	1st Fall	2nd Spring	3rd Fall	4th Spring	5th Fall	6th Spring	7th Fall	8th Spring	9th Fall	10th Spring
Fall 2010	2,516	1,987	1,601	1,524	1,161	1,090	778	671	488	478
Persist Rate	100%	79%	64%	61%	46%	43%	31%	27%	19%	19%
Fall 2011	2,599	2,109	1,666	1,536	1,173	1,072	745	683	---	---
Persist Rate	100%	81%	64%	59%	45%	41%	29%	26%	---	---
Fall 2012	2,793	2,233	1,737	1,582	1,284	1,166	---	---	---	---
Persist Rate	100%	80%	62%	57%	46%	42%	---	---	---	---
Fall 2013	3,002	2,393	1,912	1,737	---	---	---	---	---	---
Persist Rate	100%	80%	64%	58%	---	---	---	---	---	---
Fall 2014	2,328	1,962	---	---	---	---	---	---	---	---
Persist Rate	100%	84%	---	---	---	---	---	---	---	---

Source: Ventura County Community College District – Banner Administrative Data System
SDA Student Term Data View and SDA Current Courses View

Definitions and Description

Initial-Term Enrollment

The **Initial Term** cohort consists of **first-time** students in **that fall term** who received **at least one** grade notation of A, B, IB, C, IC, P, D, ID, F, IF, NP, INP, or W.

Subsequent-Term Enrollment

A **Subsequent Term** enrollment means that a student in an Initial Term cohort enrolled in a subsequent term and received **at least one** grade notation of A, B, IB, C, IC, P, D, ID, F, IF, NP, INP, or W. The subsequent-term enrollment could be in any VCCCD college (Moorpark, Oxnard, or Ventura).

Persistence

Persistence is enrollment in a Subsequent Term. Students who skip terms (i.e., don't maintain continuous enrollment) are **counted** in the term/s in which they were enrolled.

Persistence Rate Calculation

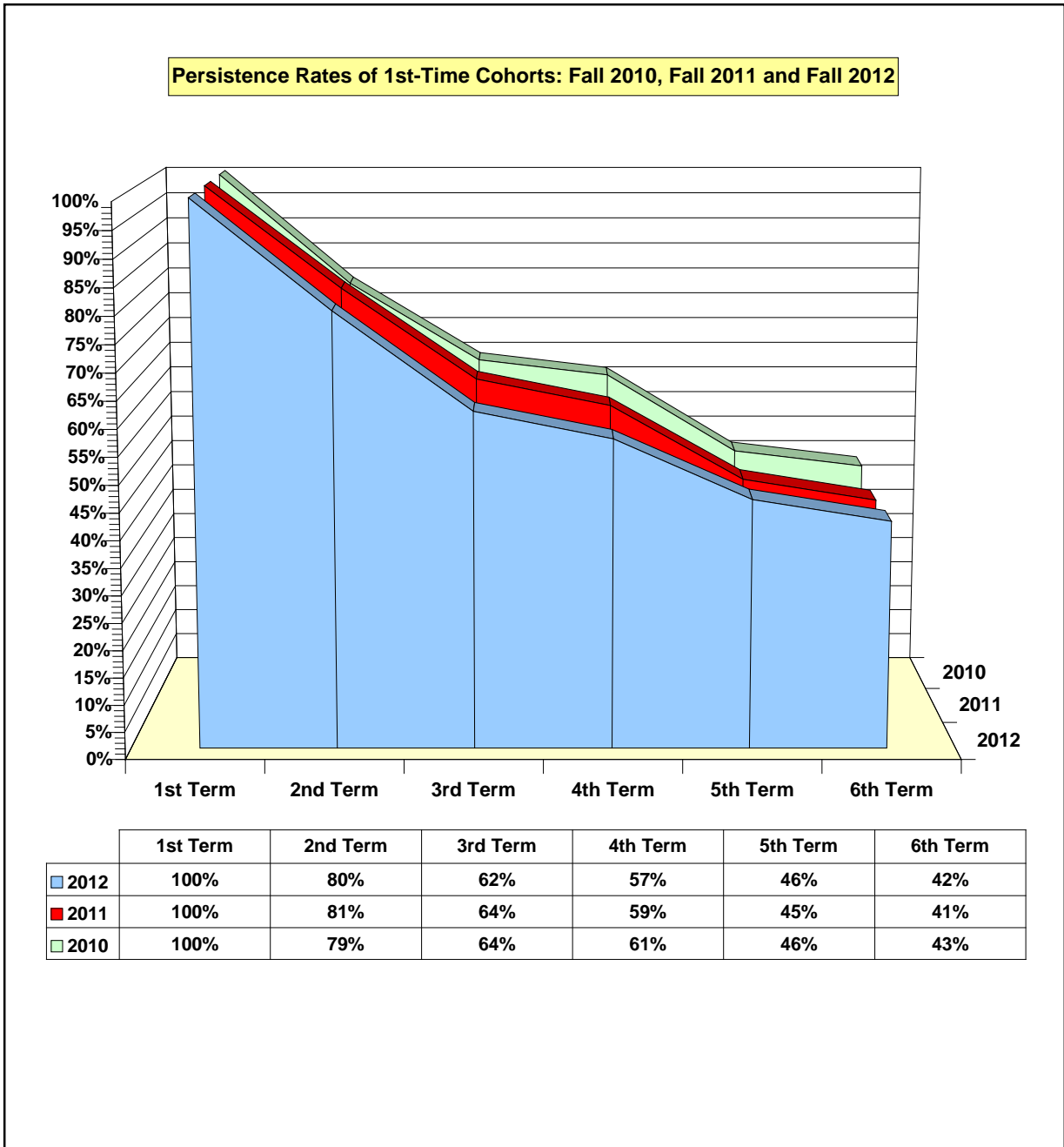
$[(\text{Number of students in the Subsequent Term}) \div (\text{Number of students in the Initial Term})] \times 100$

V. STUDENT ACHIEVEMENT

E-1. Overall Persistence Rates of First-Time Students – Chart

Persistence rates of first-time students who began at Ventura College in fall 2010, fall 2011, or fall 2012 are depicted (in the graph below) over a six semester period. The 1st Term is the initial fall semester for each cohort; the 2nd Term is the subsequent spring semester; the 3rd Term is the following fall term; etc.

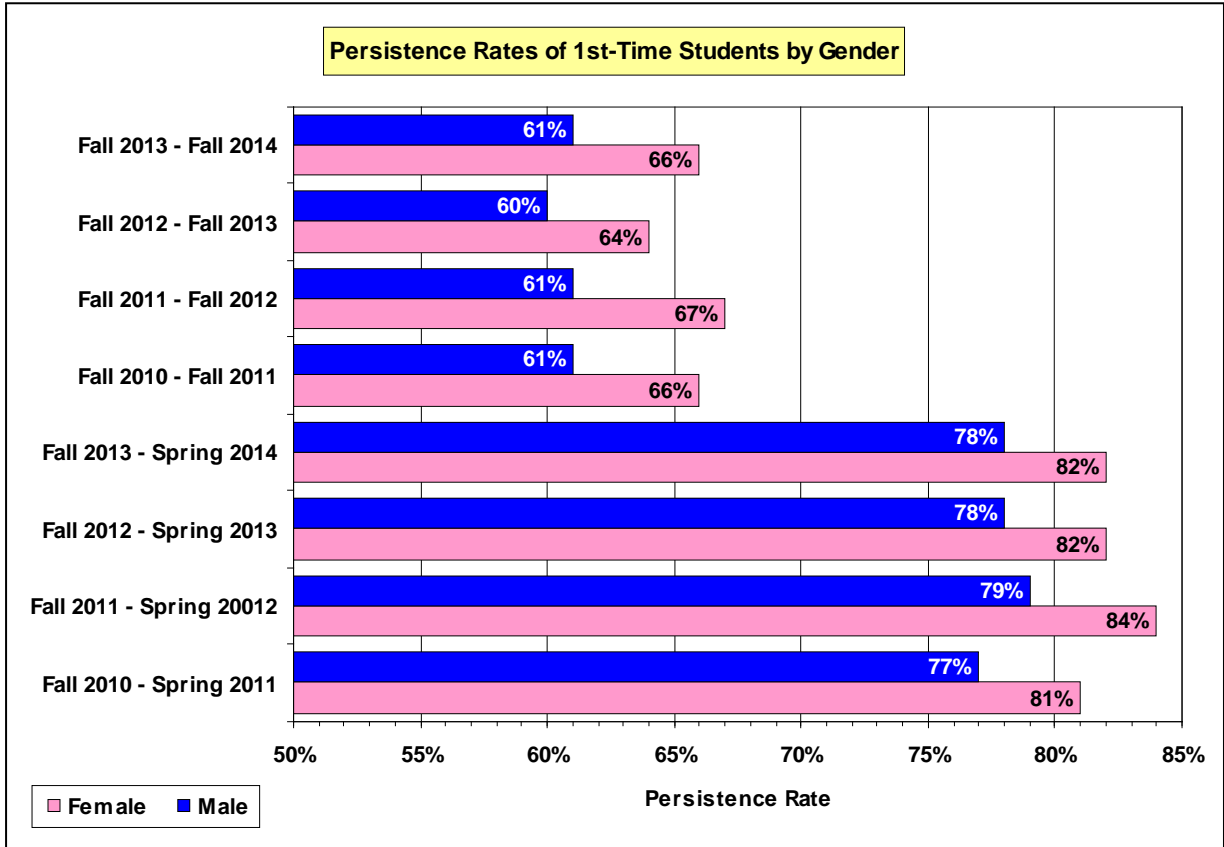
Persistence rates for the three cohorts are nearly equivalent. The largest variation in rates occurred in the fourth term: the fall 2010 cohort is 61%, the fall 2011 cohort is 59%, and the fall 2012 cohort is 57%.



V. STUDENT ACHIEVEMENT

E-2. Persistence Rates of First-Time Students: By Gender

Fall-to-spring **persistence rates** for **female** students average about **four** percentage points higher than the rates for **males**. The fall-to-fall persistence rates for **females** exceed **male** rates by about **five** points.



Ventura College – First-Time Students: Persistence by Gender												
Fall Term Cohorts: 2010, 2011, 2012, and 2013												
Gender	Fall 2010 Cohort			Fall 2011 Cohort			Fall 2012 Cohort			Fall 2013 Cohort		
	Initial	2nd	3rd	Initial	2nd	3rd	Initial	2nd	3rd	Initial	2nd	3rd
	F '10	S '11	F '11	F '11	S '12	F '13	F '12	S '13	F '13	F '13	S '14	F '14
Female												
Enrolled	1,273	1,030	842	1,218	1,018	816	1,417	1,160	911	1,448	1,184	961
Persist Rate	---	81%	66%	---	84%	67%	---	82%	64%	---	82%	66%
Male												
Enrolled	1,218	940	745	1,359	1,073	833	1,346	1,048	801	1,169	1,183	929
Persist Rate	---	77%	61%	---	79%	61%	---	78%	60%	---	78%	61%
Unreported												
Enrolled	25	17	14	22	18	17	30	25	25	52	26	22
Persist Rate	---	68%	56%	---	82%	77%	---	83%	83%	---	87%	73%
Overall												
Enrolled	2,516	1,987	1,601	2,599	2,109	1,666	2,793	2,233	1,737	3,002	2,393	1,912
Persist Rate	---	79%	64%	---	81%	64%	---	80%	62%	---	80%	64%

Source: Ventura County Community College District – Banner Administrative Data System
SDA Student Term Data View and SDA Current Courses View

V. STUDENT ACHIEVEMENT

E-3. Persistence Rates of First-Time Students: By Race/Ethnicity – Data Table

Persistence Rates of first-time students at Ventura College vary considerably among Racial/Ethnic groups. Asian students have the highest fall-to-spring and fall-to-fall persistence rates. In **fall 2013**, Hispanic student persistence rates were 82% (fall to spring) and 66% (fall to fall), higher than those of White students.

Fall-to-spring and fall-to-fall persistence rates for Black students are generally lower than for Hispanic or White students. The fall-to-fall persistence for Black students ranged from a high of 62% to a low of 43%. Because the number of first-time Black students each fall term are relatively low, their persistence rates have a greater tendency to fluctuate than the persistence rates of Hispanic or White students.

Persistence rates of Native American students and Pacific Island students also have an inherent tendency to fluctuate because of the very low enrollments of students in these racial/ethnic groups. For example, the enrollments of first-time Pacific Islanders were 13 (fall 2010), 14 (fall 2011), 2 (fall 2012), and 5 (fall 2009). The fall-to-spring persistence rates of these students were 62%, 86%, 100%, and 40%, respectively.

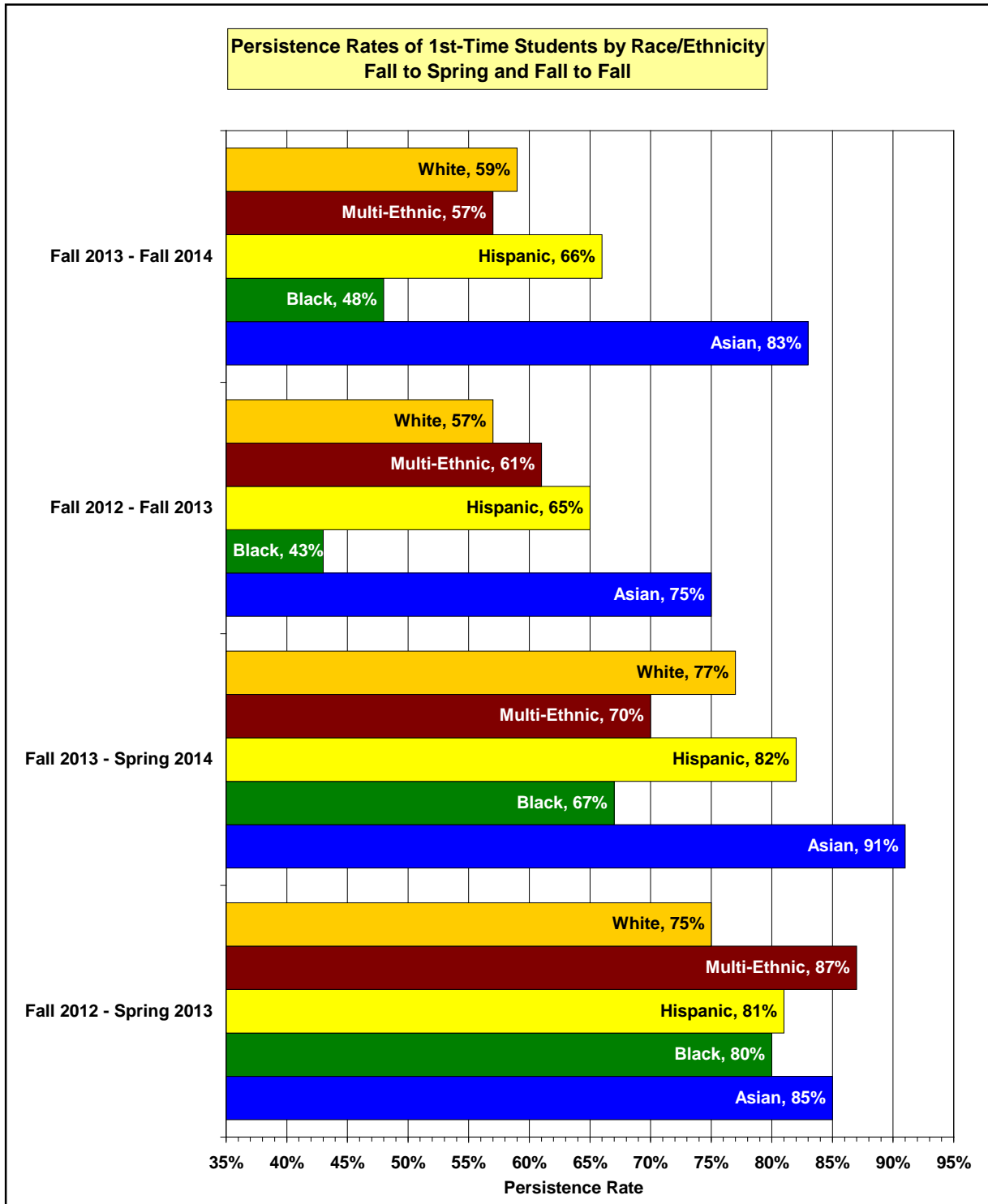
Ventura College – First-Time Students: Persistence by Race/Ethnicity												
Fall Term Cohorts: 2010, 2011, 2012, and 2013												
Race or Ethnicity	Fall 2010 Cohort			Fall 2011 Cohort			Fall 2012 Cohort			Fall 2013 Cohort		
	Initial	2nd	3rd	Initial	2nd	3rd	Initial	2nd	3rd	Initial	2nd	3rd
	F '10	S '11	F '11	F '11	S '12	F '13	F '12	S '13	F '13	F '13	S '14	F '14
Asian												
Enrolled	150	129	106	136	124	112	105	89	79	104	95	86
Persist Rate	---	86%	71%	---	91%	82%	---	85%	75%	---	91%	83%
Black												
Enrolled	101	79	63	103	78	48	89	71	38	99	66	48
Persist Rate	---	78%	62%	---	76%	47%	---	80%	43%	---	67%	48%
Hispanic												
Enrolled	1,370	1,072	869	1,506	1,227	989	1,691	1,378	1,094	1,840	1,510	1,216
Persist Rate	---	78%	63%	---	81%	66%	---	81%	65%	---	82%	66%
Native Amer.												
Enrolled	37	29	22	24	18	15	9	5	4	4	3	3
Persist Rate	---	78%	59%	---	75%	63%	---	56%	44%	---	75%	75%
Pac. Islander												
Enrolled	13	8	8	14	12	9	2	2	1	5	2	1
Persist Rate	---	62%	62%	---	86%	64%	---	100%	50%	---	40%	20%
Multi-Ethnic												
Enrolled	---	---	---	---	---	---	100	87	61	134	94	76
Persist Rate	---	---	---	---	---	---	---	87%	61%	---	70%	57%
White												
Enrolled	756	596	473	719	569	434	787	593	452	802	614	472
Persist Rate	---	79%	63%	---	79%	60%	---	75%	57%	---	77%	59%
Unknown												
Enrolled	89	74	60	97	81	59	10	8	8	14	9	10
Persist Rate	---	83%	67%	---	84%	61%	---	80%	80%	---	64%	71%
Overall												
Enrolled	2,516	1,987	1,601	2,599	2,109	1,666	2,793	2,233	1,737	3,002	2,393	1,912
Persist Rate	---	79%	64%	---	81%	64%	---	80%	62%	---	80%	64%

Source: Ventura County Community College District – Banner Administrative Data System
SDA Student Term Data View and SDA Current Courses View

V. STUDENT ACHIEVEMENT

E-3. Persistence Rates of First-Time Students: By Race/Ethnicity – Chart

In the chart below, **persistence rates** of first-time **fall 2012** and **fall 2013** students are depicted by **ethnic group**. Native Americans and Pacific Islanders are excluded because there are less than ten students in each group's initial fall 2012 or fall 2013 cohort.



V. STUDENT ACHIEVEMENT

E-4. Persistence Rates of First-Time Students: By Age Group – Data Table

Persistence Rates of first-time students vary significantly among **Age Groups**. First-time students in the “19 / younger” age group have fall-to-spring and fall-to-fall persistence rates that are close to 50% higher than the persistence rates of the next highest age group. The fall-to-spring persistence rates for students in the “19 / younger” age group range from 85% to 87%. Fall-to-fall persistence rates for the “19 / younger” students have increased from 70% (fall 2010 cohort) to 74% (fall 2014 cohort).

The age group with the lowest persistence rates is the “50 or older” category. It is not surprising that this age group has the lowest persistence rates since these students were probably not seeking a certificate, degree, or transfer. They were most likely taking a course/s for pleasure or to gain specific knowledge in a certain subject area.

The chart on the following page graphically depicts the fall-to-spring and fall-to-fall persistence rates for the six age groups within the fall 2012 and fall 2013 cohorts.

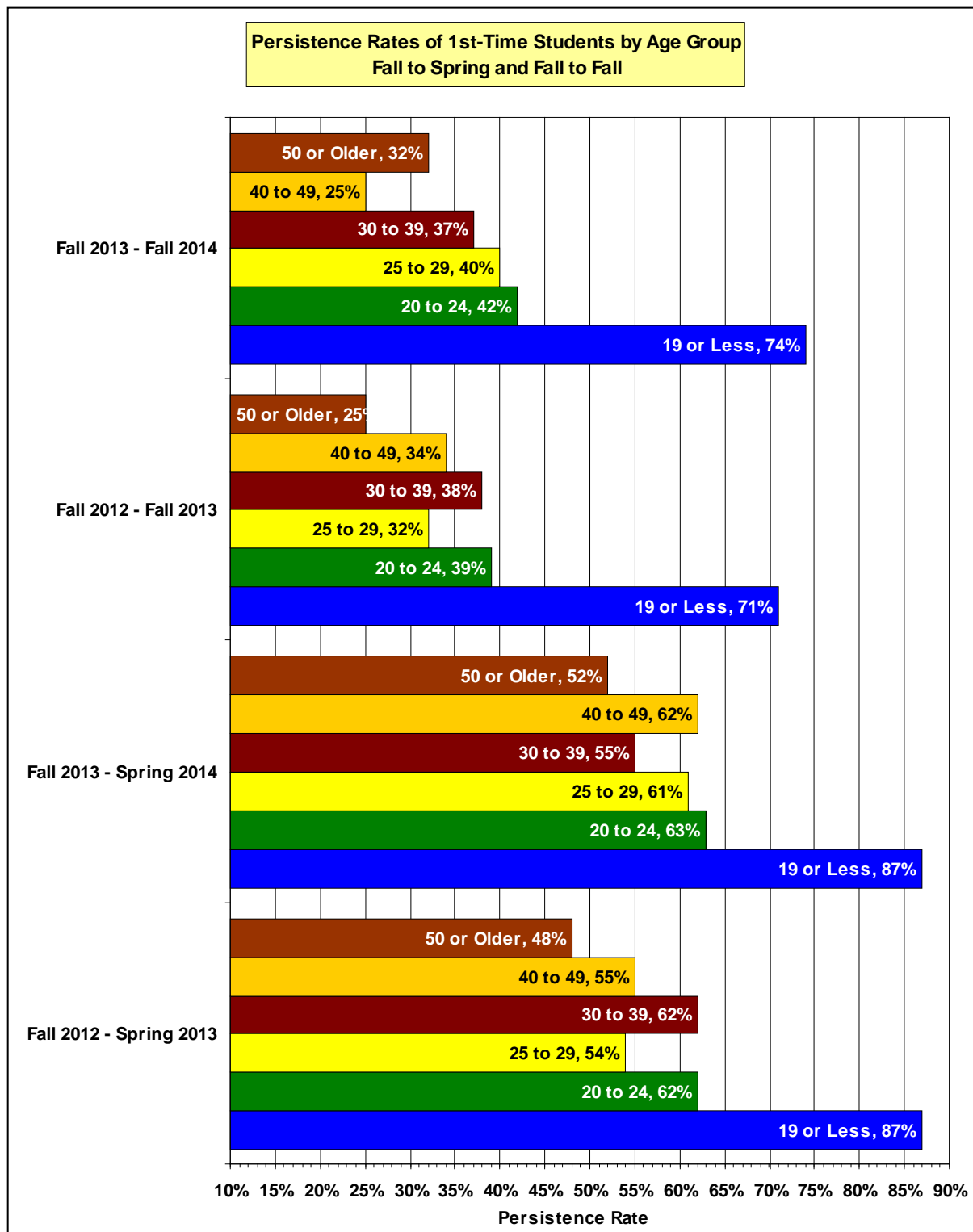
Ventura College – First-Time Students: Persistence by Age Group												
Fall Term Cohorts: 2010, 2011, 2012, and 2013												
Age Group (In Years)	Fall 2010 Cohort			Fall 2011 Cohort			Fall 2012 Cohort			Fall 2013 Cohort		
	Initial	2nd	3rd	Initial	2nd	3rd	Initial	2nd	3rd	Initial	2nd	3rd
	F '10	S '11	F '11	F '11	S '12	F '13	F '12	S '13	F '13	F '13	S '14	F '14
19 / younger												
Enrolled	2,034	1,726	1,418	2,197	1,884	1,527	2,079	1,815	1,479	2,159	1,884	1,587
Persist Rate	---	85%	70%	---	86%	70%	---	87%	71%	---	87%	74%
20 to 24												
Enrolled	262	153	104	224	129	81	356	219	140	417	263	176
Persist Rate	---	58%	40%	---	58%	36%	---	62%	39%	---	63%	42%
25 to 29												
Enrolled	87	50	34	59	34	24	118	64	38	146	89	58
Persist Rate	---	57%	39%	---	58%	41%	---	54%	32%	---	61%	40%
30 to 39												
Enrolled	72	33	24	54	28	19	104	64	39	141	78	52
Persist Rate	---	46%	33%	---	52%	35%	---	62%	38%	---	55%	37%
40 to 49												
Enrolled	43	16	11	44	26	11	76	42	26	73	45	18
Persist Rate	---	37%	26%	---	59%	25%	---	55%	34%	---	62%	25%
50 or older												
Enrolled	18	9	10	21	8	4	60	29	15	66	34	21
Persist Rate	---	50%	56%	---	38%	19%	---	48%	25%	---	52%	32%
Overall												
Enrolled	2,516	1,987	1,601	2,599	2,109	1,666	2,793	2,233	1,737	3,002	2,393	1,912
Persist Rate	---	79%	64%	---	81%	64%	---	80%	62%	---	80%	64%

Source: Ventura County Community College District – Banner Administrative Data System
SDA Student Term Data View and SDA Current Courses View

V. STUDENT ACHIEVEMENT

E-4. Persistence Rates of First-Time Students: By Age Group – Chart

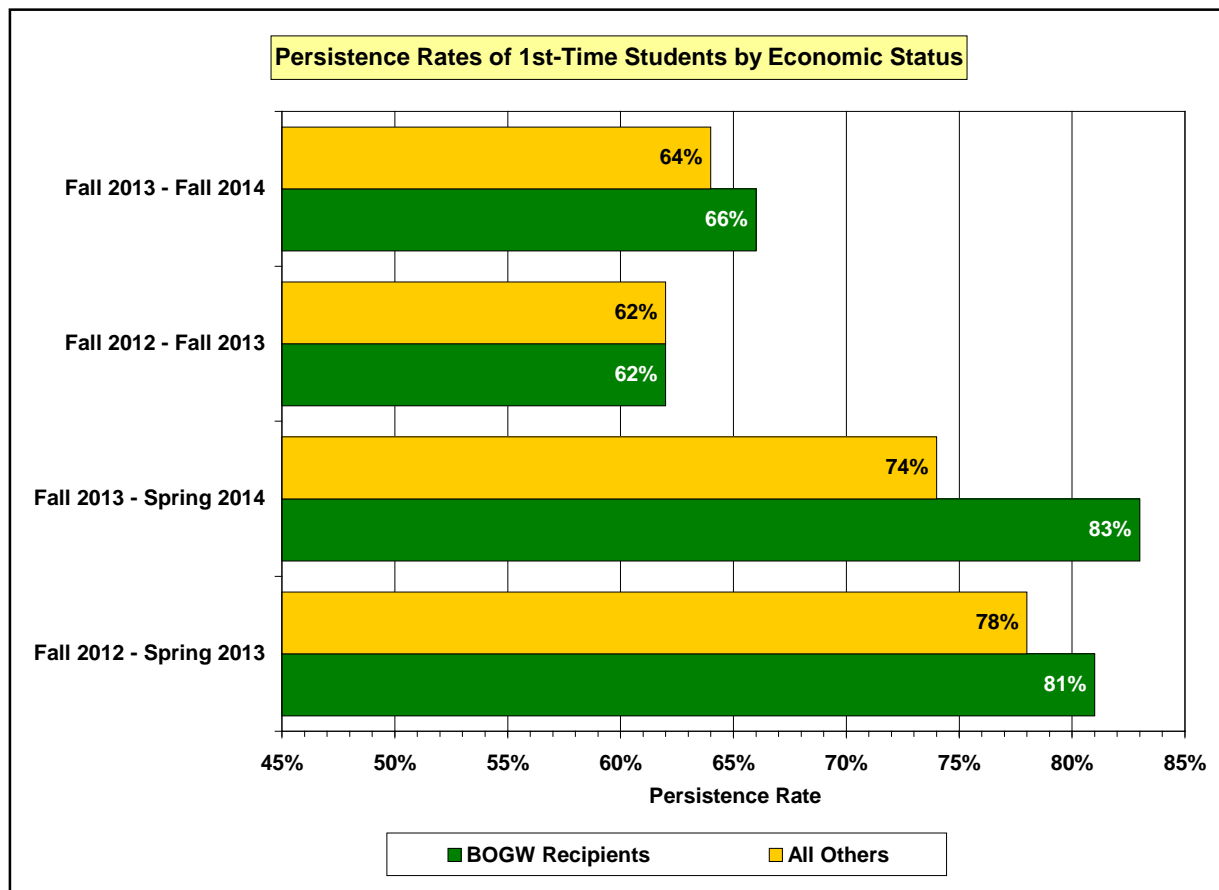
In the chart, **persistence rates** of first-time **fall 2012** and **fall 2013** students are depicted by **age group**.



V. STUDENT ACHIEVEMENT

E-5. Persistence Rates of First-Time Students: By Economic Status

In general, persistence rates of first-time **BOG Waiver** recipients at VC are higher than those for all other first-time students (non-BOGW recipients). In the chart below, fall-to-spring and fall-to-fall persistence rates are depicted for BOGW recipients and non-BOGW recipients who were first-time in fall 2012 or fall 2013.



Ventura College Students – First-Time Students: Persistence by Economic Status												
Fall Term Cohorts: 2010, 2011, 2012, and 2013												
Economic Status	Fall 2010 Cohort			Fall 2011 Cohort			Fall 2012 Cohort			Fall 2013 Cohort		
	Initial F '10	2nd S '11	3rd F '11	Initial F '11	2nd S '12	3rd F '13	Initial F '12	2nd S '13	3rd F '13	Initial F '13	2nd S '14	3rd F '14
BOGW												
Enrolled	1,235	1,026	818	1,620	1,345	1,055	1,696	1,379	1,054	1,913	1,587	1,254
Persist Rate	---	83%	66%	---	83%	65%	---	81%	62%	---	83%	66%
All Others												
Enrolled	1,281	961	783	979	764	611	1,097	854	683	1,089	806	658
Persist Rate	---	75%	61%	---	78%	62%	---	78%	62%	---	74%	60%
Overall												
Enrolled	2,516	1,987	1,601	2,599	2,109	1,666	2,793	2,233	1,737	3,002	2,393	1,912
Persist Rate	---	79%	64%	---	81%	64%	---	80%	62%	---	80%	64%

Source: Ventura County Community College District – Banner Administrative Data System
SDA Student Term Data View and SDA Current Courses View