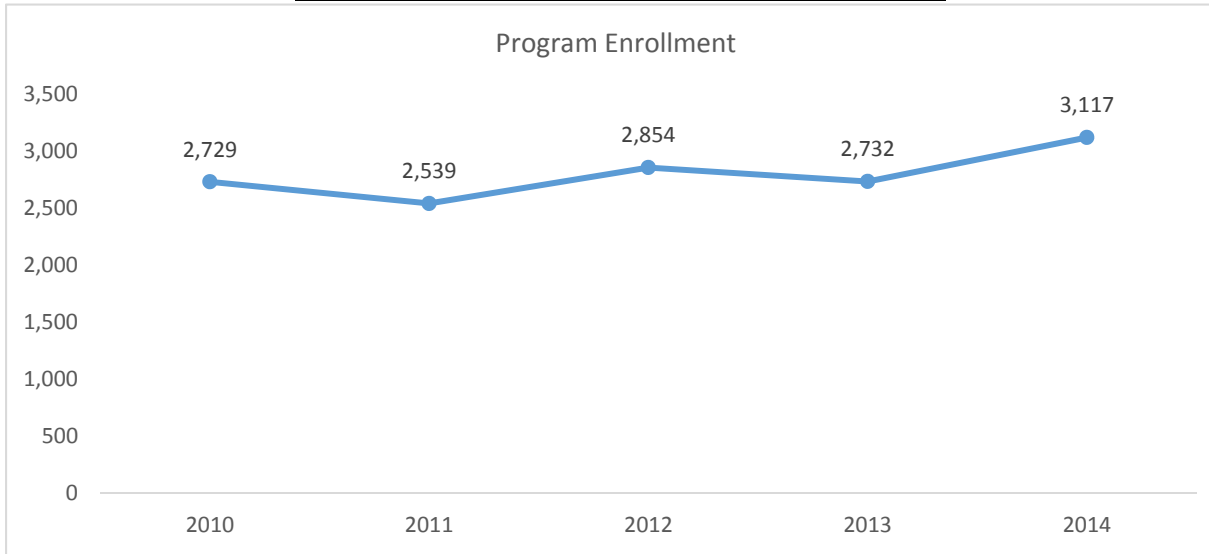


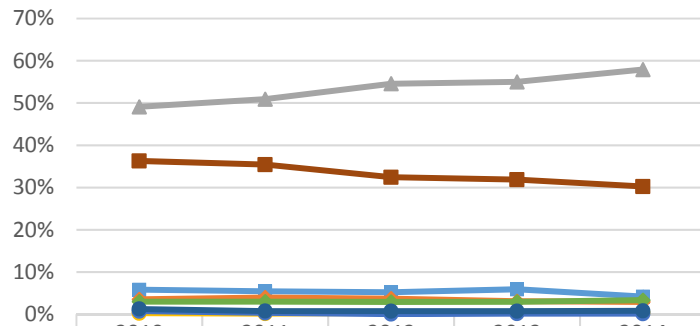
2015-2016 Program Review Datasheet

Accounting and Business

Section A - Enrollment and Student Demographics

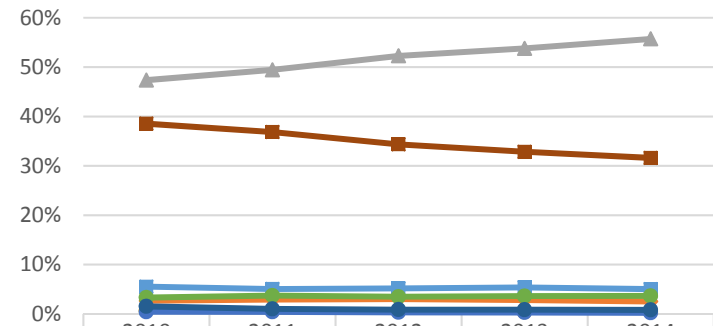


Student Ethnicity - Accounting and Business



| | 2010 | 2011 | 2012 | 2013 | 2014 |
|-------------|-------|-------|-------|-------|-------|
| Asian | 5.8% | 5.4% | 5.2% | 5.9% | 4.2% |
| Black | 3.5% | 4.0% | 3.7% | 3.1% | 2.9% |
| Hispanic | 49.1% | 50.9% | 54.6% | 55.0% | 57.9% |
| Native Amer | 0.2% | 0.2% | 0.3% | 0.3% | 0.4% |
| Pac Island | 0.7% | 0.3% | 0.0% | 0.2% | 0.1% |
| Two or More | 3.0% | 3.0% | 2.9% | 2.9% | 3.3% |
| Unknown | 1.2% | 0.8% | 0.7% | 0.7% | 0.8% |
| White | 36.3% | 35.4% | 32.4% | 31.9% | 30.2% |

Student Ethnicity - Ventura College

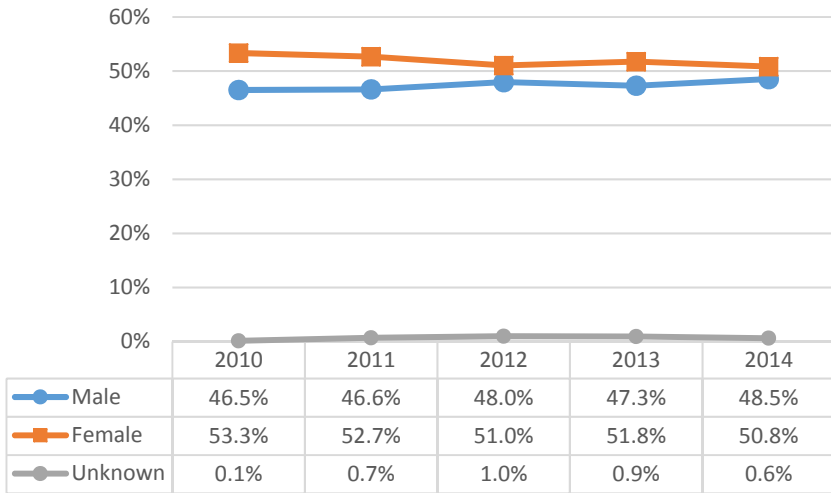


| | 2010 | 2011 | 2012 | 2013 | 2014 |
|-------------|-------|-------|-------|-------|-------|
| Asian | 5.5% | 5.1% | 5.2% | 5.4% | 5.0% |
| Black | 2.7% | 2.9% | 3.0% | 2.8% | 2.5% |
| Hispanic | 47.4% | 49.4% | 52.3% | 53.8% | 55.7% |
| Native Amer | 0.6% | 0.6% | 0.5% | 0.4% | 0.4% |
| Pac Island | 0.4% | 0.4% | 0.3% | 0.3% | 0.2% |
| Two or More | 3.3% | 3.7% | 3.5% | 3.6% | 3.6% |
| Unknown | 1.5% | 1.0% | 0.9% | 0.9% | 0.8% |
| White | 38.5% | 36.8% | 34.4% | 32.8% | 31.6% |

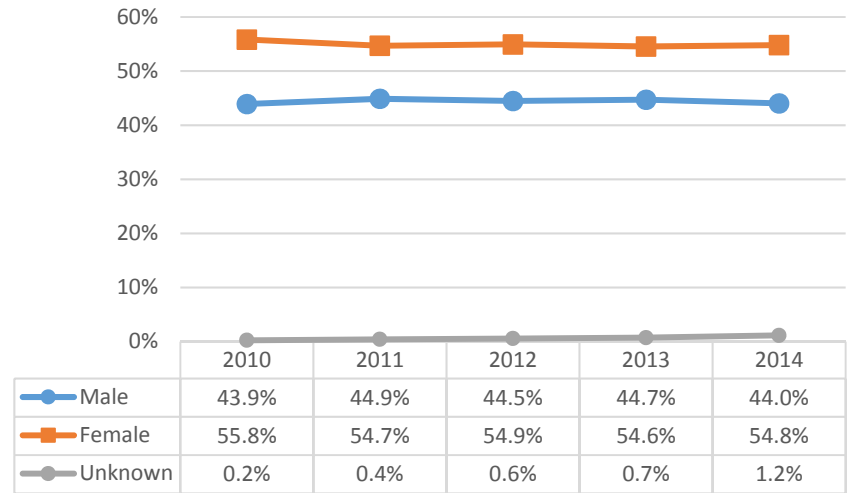


2015-2016 Program Review Datasheet Accounting and Business

Student Gender - Accounting and Business

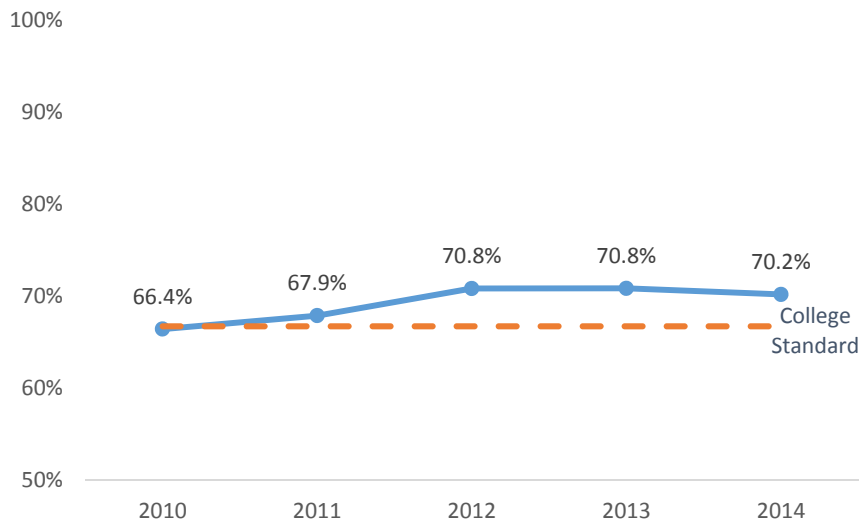


Student Gender - Ventura College

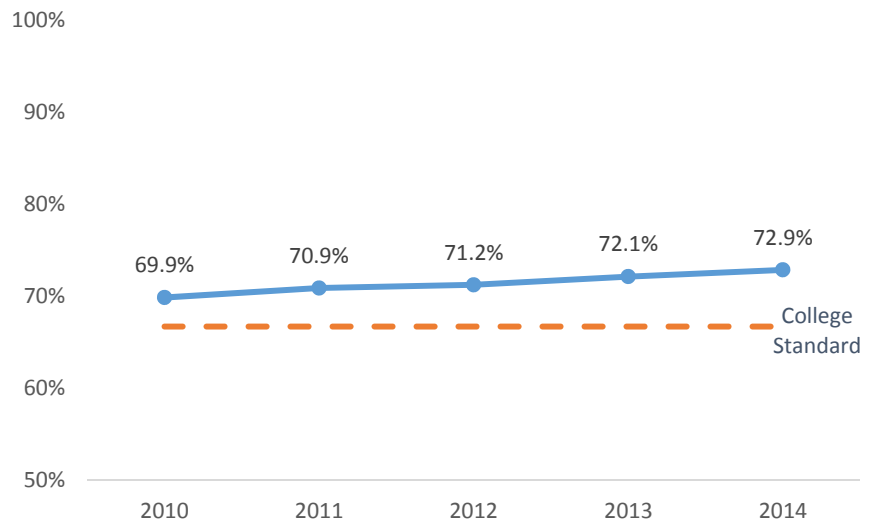


Section B - Course Success Rate

Course Success Rate - Accounting and Business

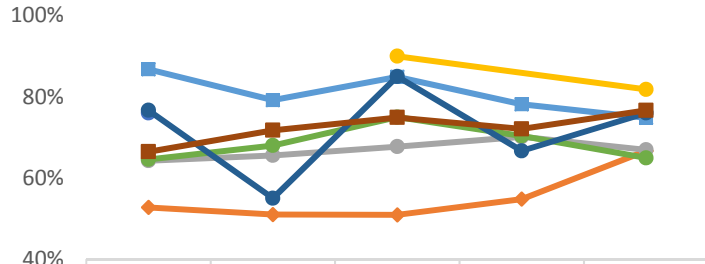


Course Success Rate - Ventura College



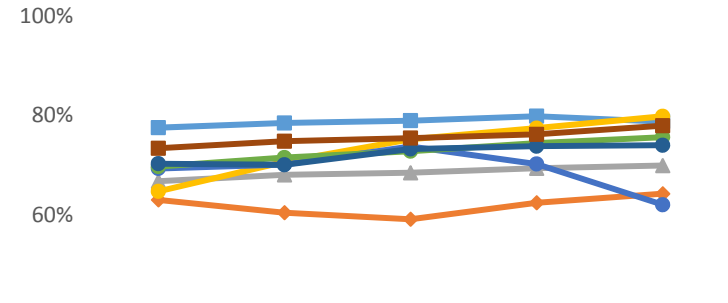
2015-2016 Program Review Datasheet Accounting and Business

Course Success Rate by Ethnicity - Accounting and Business



| | 2010 | 2011 | 2012 | 2013 | 2014 |
|-------------|-------|-------|-------|-------|-------|
| Asian | 86.8% | 79.2% | 84.9% | 78.1% | 74.8% |
| Black | 52.7% | 51.0% | 50.9% | 54.8% | 66.7% |
| Hispanic | 64.3% | 65.6% | 67.7% | 70.1% | 66.9% |
| Native Amer | | | 90.0% | | 81.8% |
| Pac Island | 76.0% | | | | |
| Two or More | 64.6% | 68.0% | 75.0% | 70.4% | 64.9% |
| Unknown | 76.7% | 55.0% | 85.0% | 66.7% | 76.0% |
| White | 66.5% | 71.7% | 74.9% | 72.1% | 76.6% |

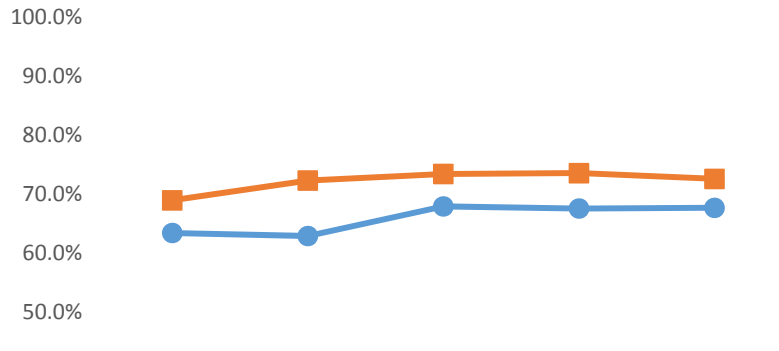
Course Success Rate by Ethnicity - Ventura College



| | 2010 | 2011 | 2012 | 2013 | 2014 |
|-------------|-------|-------|-------|-------|-------|
| Asian | 77.6% | 78.5% | 79.0% | 79.9% | 78.8% |
| Black | 63.1% | 60.5% | 59.2% | 62.5% | 64.3% |
| Hispanic | 66.8% | 68.1% | 68.5% | 69.4% | 70.0% |
| Native Amer | 64.8% | 70.7% | 75.2% | 77.5% | 79.8% |
| Pac Island | 69.4% | 70.2% | 73.8% | 70.3% | 62.1% |
| Two or More | 69.8% | 71.6% | 72.8% | 74.5% | 75.7% |
| Unknown | 70.3% | 70.1% | 73.3% | 73.8% | 74.0% |
| White | 73.4% | 74.8% | 75.5% | 76.2% | 78.0% |

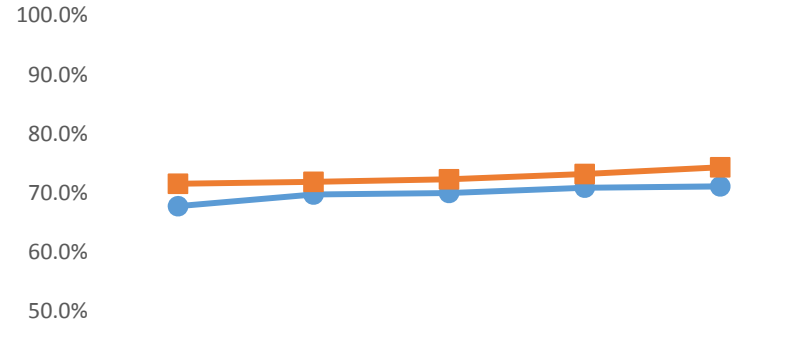
*Ethnicity data only displayed for cells with 10 or more students

Course Success Rate by Gender - Accounting and Business



| | 2010 | 2011 | 2012 | 2013 | 2014 |
|--------|-------|-------|-------|-------|-------|
| Male | 63.4% | 62.9% | 67.9% | 67.6% | 67.7% |
| Female | 68.9% | 72.3% | 73.4% | 73.5% | 72.6% |

Course Success Rate by Gender - Ventura College



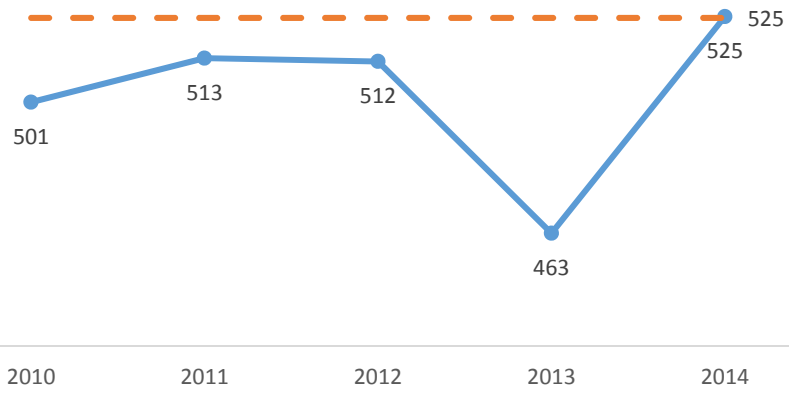
| | 2010 | 2011 | 2012 | 2013 | 2014 |
|--------|-------|-------|-------|-------|-------|
| Male | 67.8% | 69.8% | 70.0% | 70.9% | 71.1% |
| Female | 71.6% | 71.9% | 72.3% | 73.2% | 74.3% |

2015-2016 Program Review Datasheet

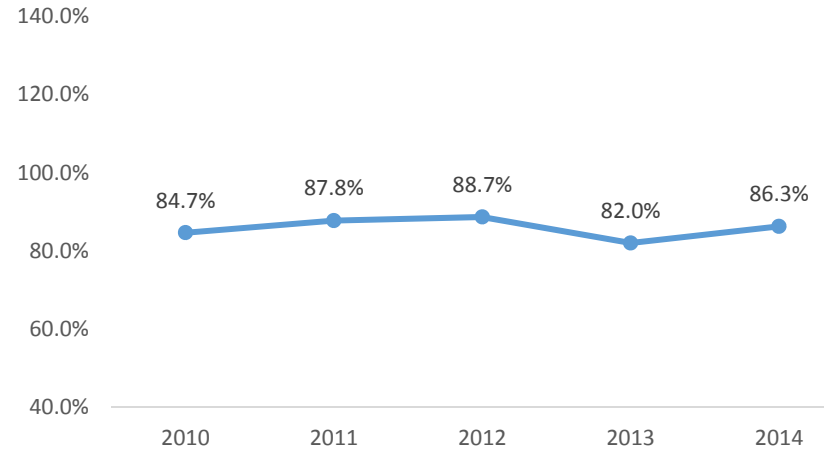
Accounting and Business

Section C - Productivity

Productivity - Accounting and Business

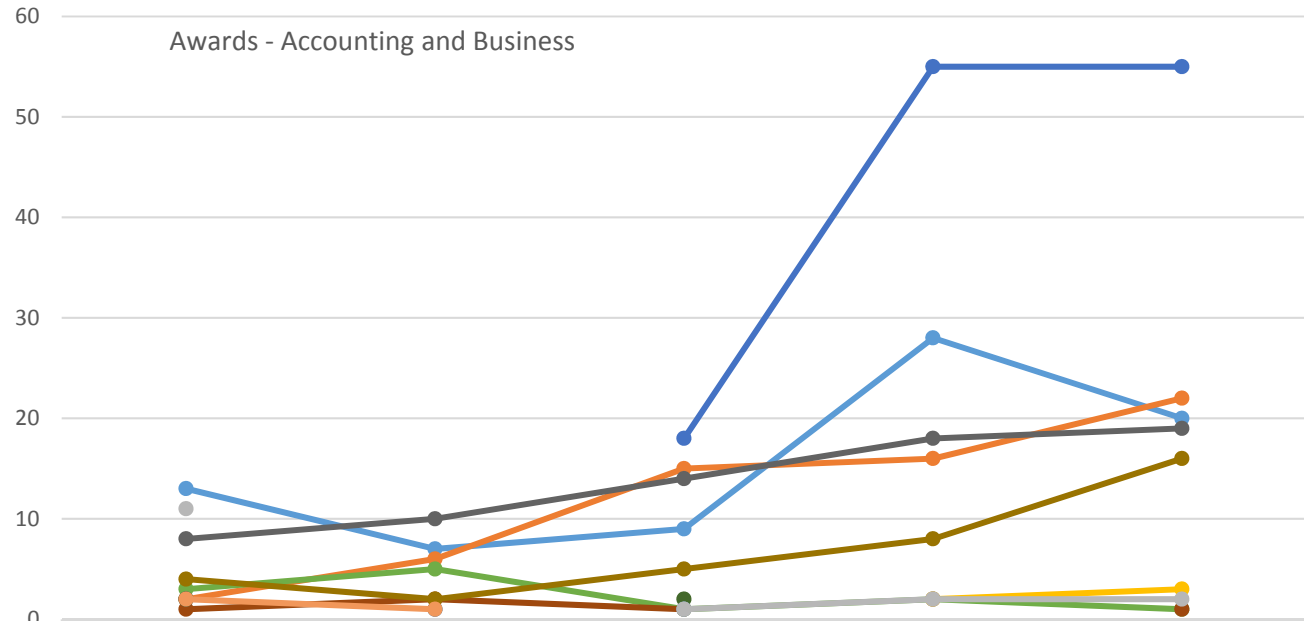


Course Fill Rate - Accounting and Business



2015-2016 Program Review Datasheet Accounting and Business

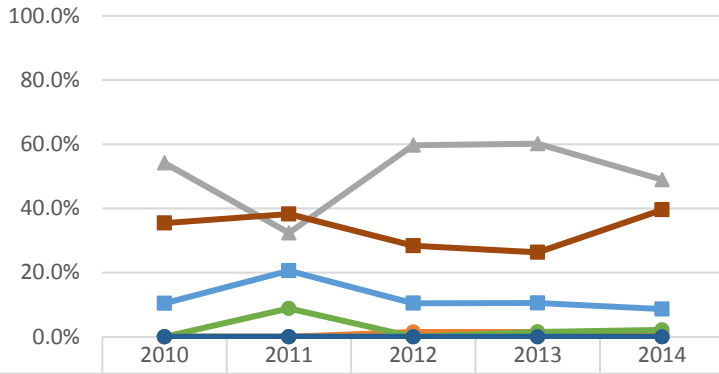
Section D - Degrees and Certificates Awarded



| | 2010 | 2011 | 2012 | 2013 | 2014 |
|---|------|------|------|------|------|
| Accounting Associate in Science | 13 | 7 | 9 | 28 | 20 |
| Accounting Certificate/30 - 59.5 units | 2 | 6 | 15 | 16 | 22 |
| Administrative Assistant Associate in Science | 11 | 10 | 14 | 18 | 19 |
| Administrative Assistant Certificate/18 - 29.5 units | 0 | 0 | 0 | 2 | 3 |
| Business Admin CSU Transfer Assoc in Science for Transfer | 0 | 0 | 18 | 55 | 55 |
| Business Associate in Science | 3 | 5 | 1 | 2 | 1 |
| Business Business Management Associate in Science | 0 | 1 | 0 | 0 | 0 |
| Business Certificate/30 - 59.5 units | 1 | 2 | 1 | 0 | 1 |
| Business Management Associate in Science | 8 | 10 | 14 | 18 | 19 |
| Business Management Certificate/30 - 59.5 units | 4 | 2 | 5 | 8 | 16 |
| Business-Marketing Associate in Science | 2 | 0 | 0 | 0 | 0 |
| Executive Assistant Associate in Science | 2 | 0 | 2 | 0 | 0 |
| Executive Assistant Certificate/18 - 29.5 units | 0 | 0 | 1 | 0 | 0 |
| Supervision Associate in Science | 2 | 1 | 0 | 2 | 0 |
| Supervision Certificate/18 - 29.5 units | 11 | 0 | 1 | 2 | 2 |

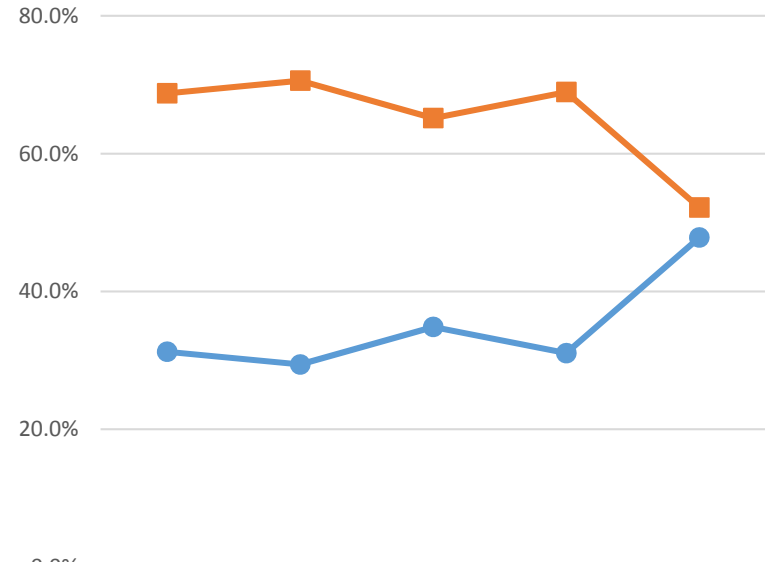
2015-2016 Program Review Datasheet Accounting and Business

Awards by Ethnicity - (Multiple Items)



| | | | | | |
|-------------|-------|-------|-------|-------|-------|
| Asian | 10.4% | 20.6% | 10.4% | 10.5% | 8.6% |
| Black | 0.0% | 0.0% | 1.5% | 1.5% | 0.7% |
| Hispanic | 54.2% | 32.4% | 59.7% | 60.2% | 48.9% |
| Native Amer | 0.0% | 0.0% | 0.0% | 0.0% | 0.0% |
| Pac Island | 0.0% | 0.0% | 0.0% | 0.0% | 0.0% |
| Two or More | 0.0% | 8.8% | 0.0% | 1.5% | 2.2% |
| Unknown | 0.0% | 0.0% | 0.0% | 0.0% | 0.0% |
| White | 35.4% | 38.2% | 28.4% | 26.3% | 39.6% |

Awards by Gender - (Multiple Items)



| | | | | | |
|--------|-------|-------|-------|-------|-------|
| Male | 31.3% | 29.4% | 34.8% | 31.1% | 47.8% |
| Female | 68.8% | 70.6% | 65.2% | 68.9% | 52.2% |