

# SIMPLE STEPS TO TRANSFER TAX INFORMATION INTO YOUR FAFSA®

The IRS Data Retrieval Tool (IRS DRT) Electronically Transfers Your Federal Tax Return Information Into Your FAFSA.

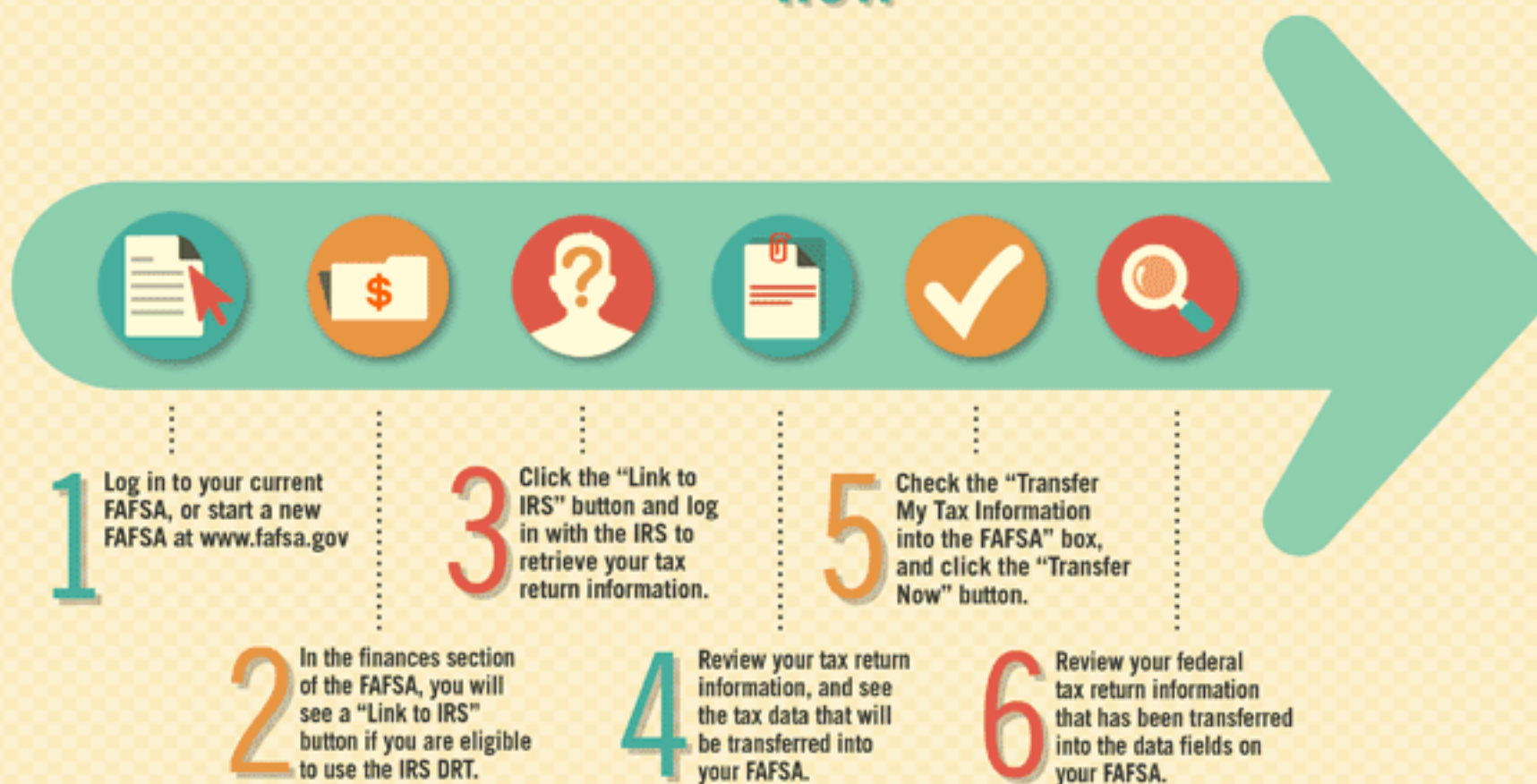
## WHY

**EASY** Transfer info with the click of a button.

**FAST** Instantly retrieve your information.

**ACCURATE** Correctly fill in data fields.

## HOW



## WHEN

### AVAILABLE

The IRS DRT is available the first Sunday in February.

### TRANSFER

Depending on whether you filed your taxes electronically or by mail, you may be able to use the IRS DRT in as little as two weeks from when you filed your tax return.

### REMEMBER

If you submitted your FAFSA before you filed your taxes, you can still transfer your tax return information. Log in to your FAFSA and update your tax return status to "Already Completed." You will see the link to the IRS DRT. Follow steps three through six above and resubmit your FAFSA.

The IRS DRT can be used by both students and parents.

Federal Student Aid  
An OFFICE of the U.S. DEPARTMENT of EDUCATION

PROUD SPONSOR of  
the AMERICAN MIND®

To learn more about the IRS DRT,  
visit [StudentAid.gov/irs-drt](http://StudentAid.gov/irs-drt)