

**IV. FALL TERM ENROLLMENT TRENDS**

**Table of Contents**

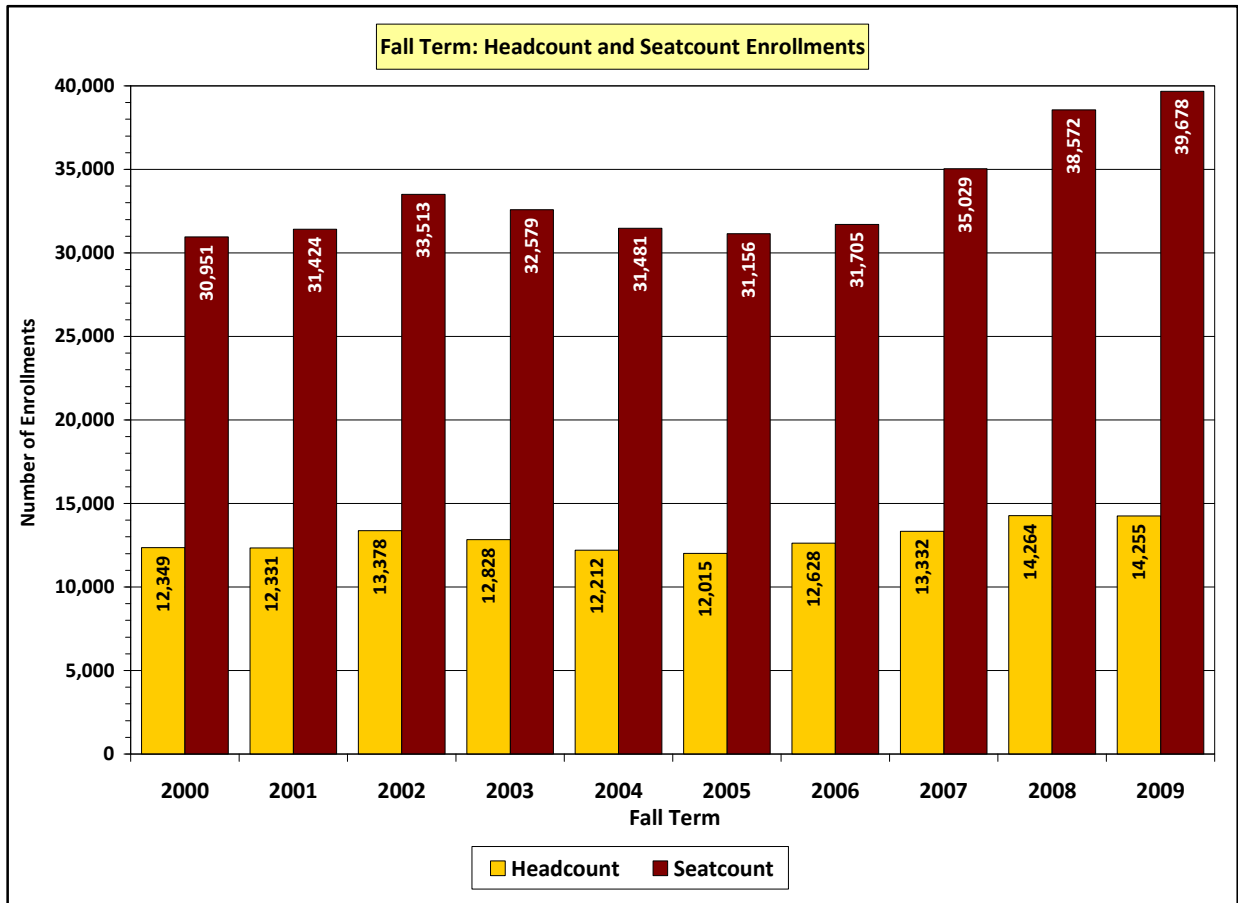
---

<u>ITEM</u>	<u>PAGE</u>
<b>A. Headcount and Seatcount Enrollments</b>	<b>1</b>
<b>B. Student Demographics</b>	<b>2</b>
1. Gender	
2. Race/Ethnicity	
3. Age Group	
4. Enrollment Status	
5. Citizenship Status	
6. Educational Goal	
7. Day / Evening Status	
8. Full-Time / Part-Time Status	
9. Legal Residency Status	
10. Ventura County Residents Attending VC	
11. Special Student Services Programs and Financial Aid	
<b>C. Course Enrollments</b>	<b>16</b>
1. Credit Status	
2. Day / Evening Status	
3. Distance Education by Day / Evening Status	

**IV. FALL TERM ENROLLMENT TRENDS**

**A. Headcount and Seatcount Enrollments**

The expectation for fall 2010 and beyond is that Ventura College's headcount and seatcount enrollments will decrease due to fewer course offerings and reductions in state budget allocations to community colleges.



Ventura College – Headcount and Seatcount Enrollments										
Fall Terms: 2000 through 2009										
Enrollments	Fall Term									
	2000	2001	2002	2003	2004	2005	2006	2007	2008	2009
Headcount	12,349	12,331	13,378	12,828	12,212	12,015	12,628	13,332	14,264	14,255
Seatcount	30,951	31,424	33,513	32,579	31,481	31,156	31,705	35,029	38,572	39,678

Source: California Community Colleges Chancellor's Office: Data Mart

Headcount: Student Demographics – Term, Query by College/Statewide

Students who meet the full-term reporting criteria in each of the fall terms are included in this query. The full-term reporting criterion is defined as student headcount status (STDZ) of:

- A (Credit student enrolled in Weekly / Daily Census section),
- B (Credit student enrolled in Positive Attendance section with 8 or more hours or 0.5 or more units earned),
- C (Credit student enrolled in Independent Study section with 0.5 or more units earned), or
- F (Noncredit student enrolled in Positive Attendance section with 8 or more hours).

Web Link: [https://misweb.cccco.edu/mis/onlinestat/studdemo\\_coll\\_cube.cfm](https://misweb.cccco.edu/mis/onlinestat/studdemo_coll_cube.cfm)

Seatcount: Program Retention/Success Rates – By Distance Education Status; Query by College/Statewide

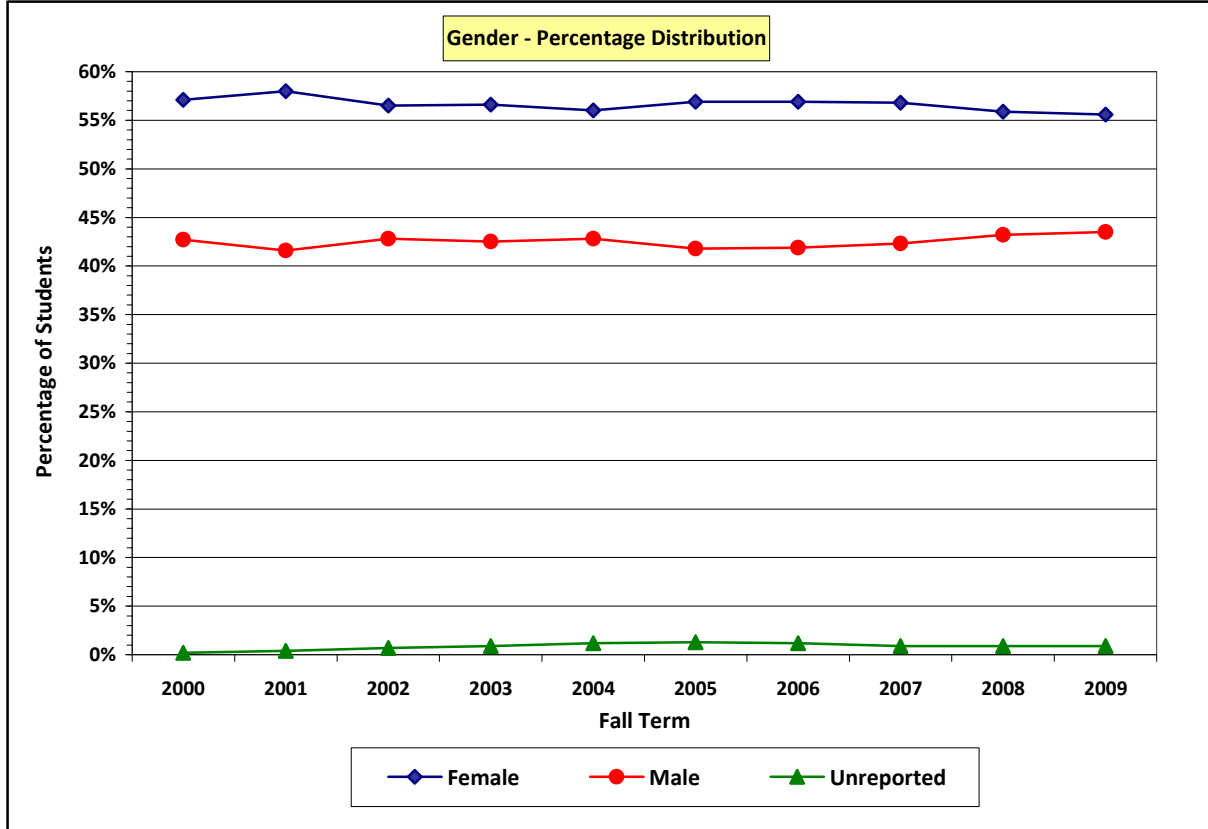
Credit enrollments for which State Apportionment was claimed.

Web Link: [https://misweb.cccco.edu/mis/onlinestat/ret\\_sucs\\_de.cfm](https://misweb.cccco.edu/mis/onlinestat/ret_sucs_de.cfm)

**IV. FALL TERM ENROLLMENT TRENDS**

**B-1. Gender**

Over the past decade, the proportion of **female** students at Ventura College has been about **56%**, with **males** accounting for about **43%** of all students (the remaining 1% was composed students who did not report their gender). In fall 2009, the statewide gender proportions were 54% female, 45% male, and 1% unreported. The percentage of female students at VC in fall 2009 was 55.6%, which is slightly higher than the statewide average. The percentage of male students at Ventura College in fall 2009 was 43.5%, one and a half percentage points lower than the statewide average for males.



Ventura College Students by Gender										
Fall Terms: 2000 through 2009										
Gender	Fall Term									
	2000	2001	2002	2003	2004	2005	2006	2007	2008	2009
Female	7,051	7,148	7,559	7,259	6,838	6,832	7,181	7,573	7,975	7,927
Male	5,275	5,137	5,724	5,452	5,227	5,019	5,294	5,634	6,160	6,206
Unreported	23	46	95	117	147	164	153	125	129	122
<b>Total Count</b>	<b>12,349</b>	<b>12,331</b>	<b>13,378</b>	<b>12,828</b>	<b>12,212</b>	<b>12,015</b>	<b>12,628</b>	<b>13,332</b>	<b>14,264</b>	<b>14,255</b>
Gender	Fall Term									
	2000	2001	2002	2003	2004	2005	2006	2007	2008	2009
Female	57.1%	58.0%	56.5%	56.6%	56.0%	56.9%	56.9%	56.8%	55.9%	55.6%
Male	42.7%	41.6%	42.8%	42.5%	42.8%	41.8%	41.9%	42.3%	43.2%	43.5%
Unreported	0.2%	0.4%	0.7%	0.9%	1.2%	1.3%	1.2%	0.9%	0.9%	0.9%
<b>Total Percent</b>	<b>100.0%</b>	<b>100.0%</b>	<b>100.0%</b>	<b>100.0%</b>	<b>100.0%</b>	<b>100.0%</b>	<b>100.0%</b>	<b>100.0%</b>	<b>100.0%</b>	<b>100.0%</b>

Source: California Community Colleges Chancellor's Office: MIS Referential Files; SB04 – Student-Gender

**IV. FALL TERM ENROLLMENT TRENDS**

**B-2. Race/Ethnicity – Data Tables**

In fall 2008, the number of Hispanic students at Ventura College surpassed the number of White students, resulting in Hispanics becoming the largest racial/ethnic group at the college. In fall 2009, the proportion of Hispanic students at VC was **46.4%** compared to 39.6% for White students. As of the 2010 U.S. Census, the percentage of Hispanics residing in the college’s **service area** was **42.7%**, which is 3.7 percentage points **lower** than Hispanic student enrollment at Ventura College in fall 2009.

Population percentages for Ventura College’s service area and for all of Ventura County are presented in the data table below. The Census Bureau reports population data by two characteristics: **Ethnicity** (Hispanic/Latino **or** Non-Hispanic/Non-Latino) and **Race** (the percentages by city or area total 100.0%).

U. S. Census 2010										
City or Area	Total Pop.	Ethnicity		Population by Race						
		Latino	Not Lat.	Asian	Black	Nat Am	Pac Isl	2/More	Other	White
Fillmore	19,488	74.1%	25.9%	0.9%	0.5%	1.4%	0.1%	5.3%	34.7%	57.1%
Santa Paula	32,060	77.7%	22.3%	0.7%	0.5%	1.6%	0.1%	3.8%	29.8%	63.5%
Ojai Valley	27,784	20.9%	79.1%	1.6%	0.6%	1.0%	0.0%	3.2%	8.2%	85.4%
Ventura	111,889	32.6%	67.4%	3.3%	1.6%	1.2%	0.2%	5.2%	12.2%	76.3%
<b>VC Area</b>	<b>191,221</b>	<b>42.7%</b>	<b>57.3%</b>	<b>2.4%</b>	<b>1.2%</b>	<b>1.3%</b>	<b>0.1%</b>	<b>4.7%</b>	<b>16.8%</b>	<b>73.5%</b>
<b>Ven. Cnty</b>	<b>823,318</b>	<b>40.3%</b>	<b>59.7%</b>	<b>6.7%</b>	<b>1.9%</b>	<b>1.0%</b>	<b>0.2%</b>	<b>4.5%</b>	<b>17.0%</b>	<b>68.7%</b>

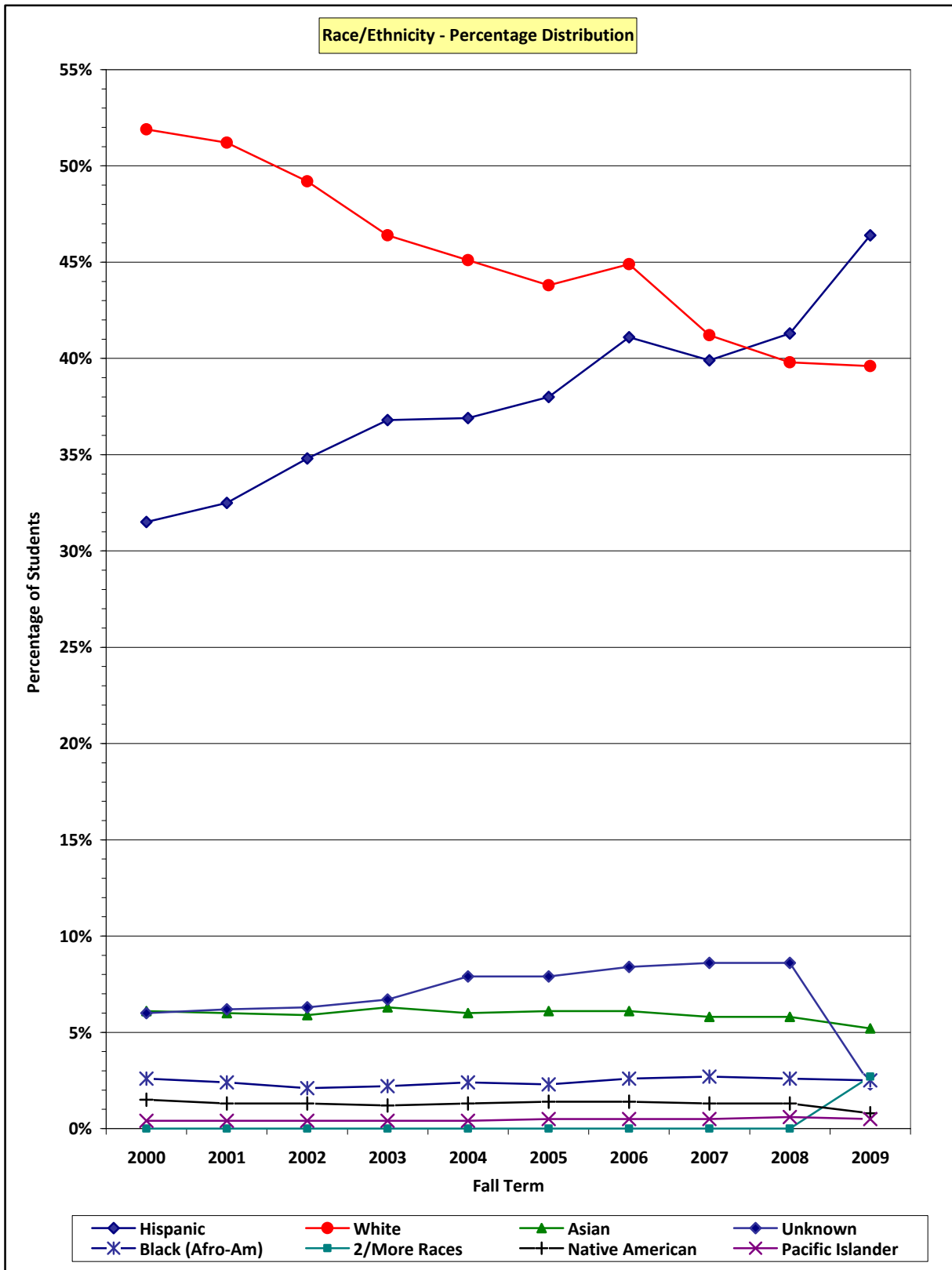
Ventura College Students by Race/Ethnicity Fall Terms: 2000 through 2009										
Race or Ethnicity	Fall Term									
	2000	2001	2002	2003	2004	2005	2006	2007	2008	2009
Asian	758	744	785	801	731	729	738	771	831	743
Black (Afro-Am)	317	295	286	284	291	281	313	354	366	360
Hispanic	3,893	4,009	4,660	4,725	4,506	4,564	4,932	5,315	5,886	6,608
Native Amer.	180	165	168	156	159	163	164	178	187	108
Pacific Islander	50	52	55	57	55	65	66	73	94	76
2/More Races	0	0	0	0	0	0	0	0	0	382
White	6,407	6,308	6,575	5,946	5,507	5,258	5,400	5,493	5,671	5,645
Unknown	744	758	849	859	963	955	1,015	1,148	1,229	333
<b>Total Count</b>	<b>12,349</b>	<b>12,331</b>	<b>13,378</b>	<b>12,828</b>	<b>12,212</b>	<b>12,015</b>	<b>12,628</b>	<b>13,332</b>	<b>14,264</b>	<b>14,255</b>
Race or Ethnicity	Fall Term									
	2000	2001	2002	2003	2004	2005	2006	2007	2008	2009
Asian	6.1%	6.0%	5.9%	6.3%	6.0%	6.1%	6.1%	5.8%	5.8%	5.2%
Black (Afro-Am)	2.6%	2.4%	2.1%	2.2%	2.4%	2.3%	2.6%	2.7%	2.6%	2.5%
Hispanic	31.5%	32.5%	34.8%	36.8%	36.9%	38.0%	41.1%	39.9%	41.3%	46.4%
Native Amer.	1.5%	1.3%	1.3%	1.2%	1.3%	1.4%	1.4%	1.3%	1.3%	0.8%
Pacific Islander	0.4%	0.4%	0.4%	0.4%	0.4%	0.5%	0.5%	0.5%	0.6%	0.5%
2/More Races	0.0%	0.0%	0.0%	0.0%	0.0%	0.0%	0.0%	0.0%	0.0%	2.7%
White	51.9%	51.2%	49.2%	46.4%	45.1%	43.8%	44.9%	41.2%	39.8%	39.6%
Unknown	6.0%	6.2%	6.3%	6.7%	7.9%	7.9%	8.4%	8.6%	8.6%	2.3%
<b>Total Percent</b>	<b>100.0%</b>	<b>100.0%</b>	<b>100.0%</b>	<b>100.0%</b>	<b>100.0%</b>	<b>100.0%</b>	<b>100.0%</b>	<b>100.0%</b>	<b>100.0%</b>	<b>100.0%</b>

Source: California Community Colleges Chancellor’s Office: MIS Referential Files; STD 10 – Student-IPEDS-Ethnicity

Note: In fall 2009, new race and ethnicity data collection procedures were mandated by the US Department of Education. The new procedures include the option of selecting multiple ethnicities, which are reported in the table above as 2/More Races. Only new students to the VCCCD (since fall 2009) have had the opportunity to select multiple races. Continuing students, however, have the ability to update their race/ethnicity via the Student Portal.

**IV. FALL TERM ENROLLMENT TRENDS**

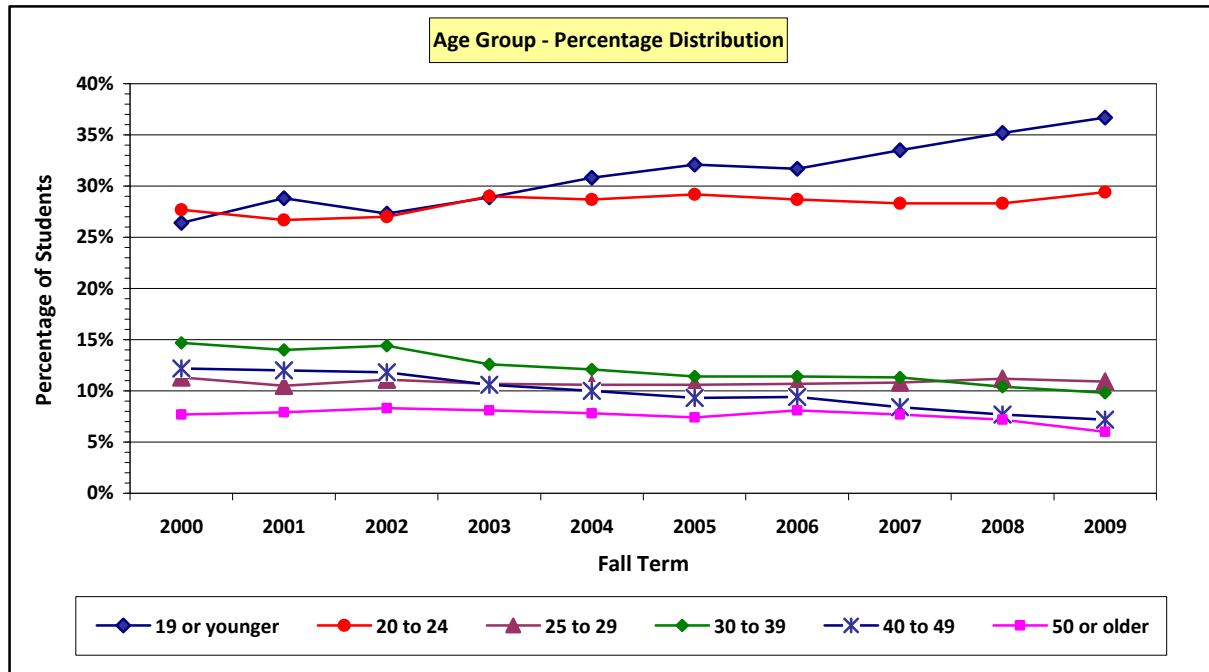
**B-2. Race/Ethnicity – Chart**



**IV. FALL TERM ENROLLMENT TRENDS**

**B-3. Age Group**

Average student age at VC has decreased by 3.3 years (11.5%) from 28.6 in fall 2000 to 25.3 in fall 2009.



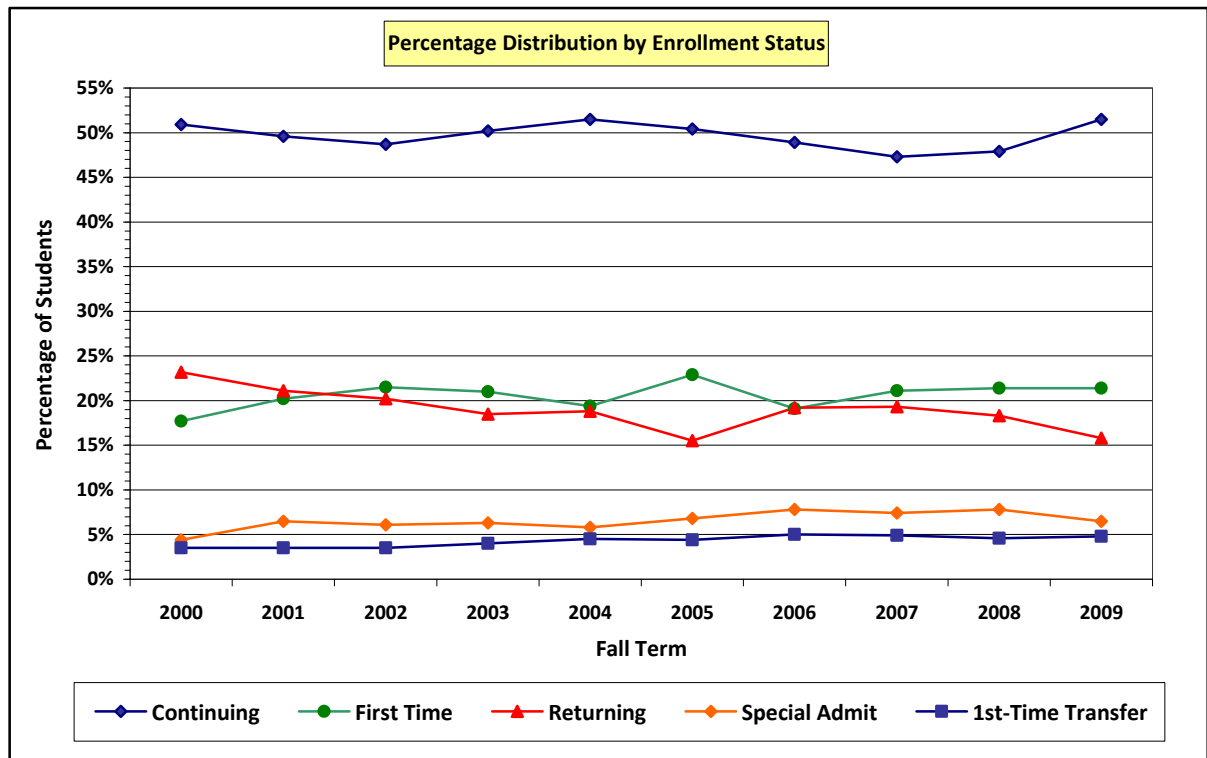
Ventura College Students by Age Group										
Fall Terms: 2000 through 2009										
Age Group (In Years)	Fall Term									
	2000	2001	2002	2003	2004	2005	2006	2007	2008	2009
19 or younger	3,265	3,545	3,652	3,710	3,760	3,858	3,999	4,473	5,026	5,230
20 to 24	3,415	3,289	3,609	3,720	3,497	3,513	3,628	3,767	4,030	4,187
25 to 29	1,395	1,300	1,486	1,378	1,296	1,278	1,352	1,444	1,597	1,556
30 to 39	1,812	1,727	1,933	1,621	1,477	1,364	1,437	1,505	1,482	1,399
40 to 49	1,505	1,485	1,581	1,355	1,226	1,112	1,189	1,117	1,101	1,021
50 or older	957	970	1,111	1,035	953	888	1,019	1,024	1,022	859
Unreported	0	15	6	9	3	2	1	2	6	3
<b>Total Count</b>	<b>12,349</b>	<b>12,331</b>	<b>13,378</b>	<b>12,828</b>	<b>12,212</b>	<b>12,015</b>	<b>12,628</b>	<b>13,332</b>	<b>14,264</b>	<b>14,255</b>
<b>Average Age</b>	<b>28.6</b>	<b>28.1</b>	<b>27.7</b>	<b>27.2</b>	<b>26.4</b>	<b>26.1</b>	<b>26.2</b>	<b>26.0</b>	<b>25.7</b>	<b>25.3</b>
Age Group (In Years)	Fall Term									
	2000	2001	2002	2003	2004	2005	2006	2007	2008	2009
19 or younger	26.4%	28.8%	27.3%	28.9%	30.8%	32.1%	31.7%	33.5%	35.2%	36.7%
20 to 24	27.7%	26.7%	27.0%	29.0%	28.7%	29.2%	28.7%	28.3%	28.3%	29.4%
25 to 29	11.3%	10.5%	11.1%	10.7%	10.6%	10.6%	10.7%	10.8%	11.2%	10.9%
30 to 39	14.7%	14.0%	14.4%	12.6%	12.1%	11.4%	11.4%	11.3%	10.4%	9.8%
40 to 49	12.2%	12.0%	11.8%	10.6%	10.0%	9.3%	9.4%	8.4%	7.7%	7.2%
50 or older	7.7%	7.9%	8.3%	8.1%	7.8%	7.4%	8.1%	7.7%	7.2%	6.0%
Unreported	0.0%	0.1%	0.1%	0.1%	0.0%	0.0%	0.0%	0.0%	0.0%	0.0%
<b>Total Percent</b>	<b>100.0%</b>	<b>100.0%</b>	<b>100.0%</b>	<b>100.0%</b>	<b>100.0%</b>	<b>100.0%</b>	<b>100.0%</b>	<b>100.0%</b>	<b>100.0%</b>	<b>100.0%</b>

Source: California Community Colleges Chancellor's Office: MIS Referential Files; STD1 – Student-Age-at-Term

**IV. FALL TERM ENROLLMENT TRENDS**

**B-4. Enrollment Status**

The percentage distributions of Ventura College students by enrollment status have remained relatively stable over the last decade. In fall 2009, over 50% of VC students were first-time college students.



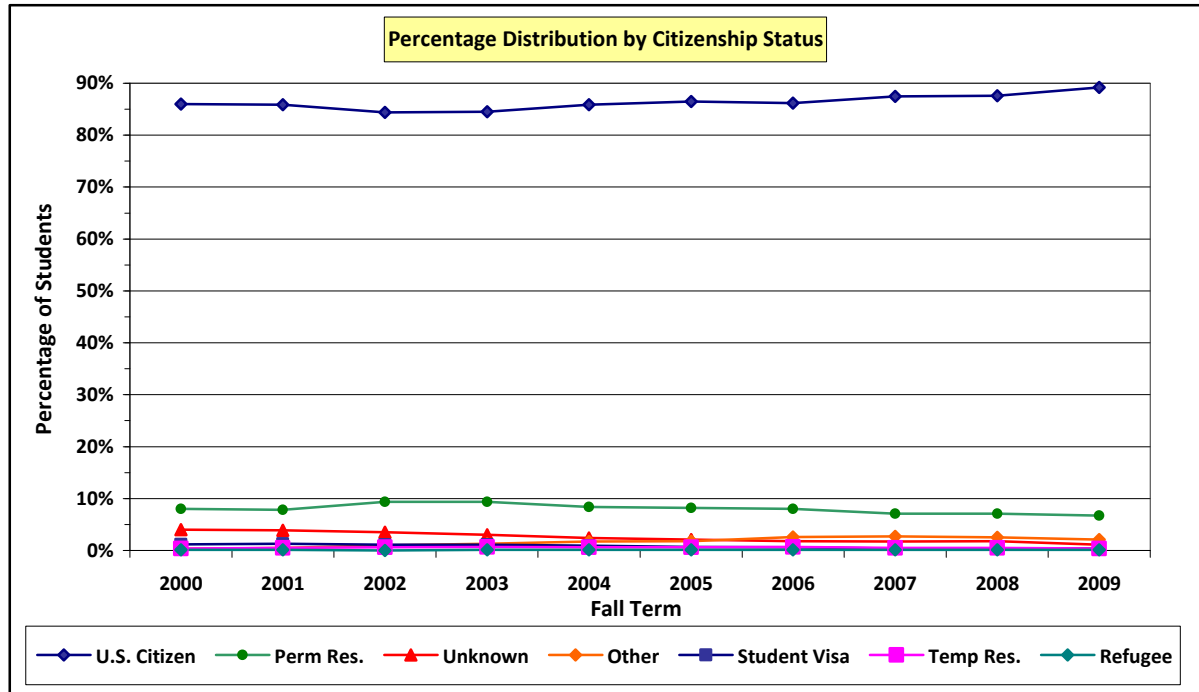
Ventura College Students by Enrollment Status Fall Terms: 2000 through 2009										
Enrollment Status	Fall Term									
	2000	2001	2002	2003	2004	2005	2006	2007	2008	2009
First-Time	2,181	2,465	2,876	2,694	2,367	2,754	2,418	2,820	3,049	3,054
1st-Time Trans	436	423	471	516	544	530	626	649	660	690
Returning	2,858	2,571	2,709	2,371	2,296	1,863	2,431	2,568	2,614	2,252
Continuing	6,287	6,069	6,511	6,434	6,293	6,057	6,170	6,313	6,829	7,341
Special Admit	547	793	811	813	712	811	983	982	1,112	918
Unreported	40	10	0	0	0	0	0	0	0	0
<b>Total Count</b>	<b>12,349</b>	<b>12,331</b>	<b>13,378</b>	<b>12,828</b>	<b>12,212</b>	<b>12,015</b>	<b>12,628</b>	<b>13,332</b>	<b>14,264</b>	<b>14,255</b>
Enrollment Status	Fall Term									
	2000	2001	2002	2003	2004	2005	2006	2007	2008	2009
First-Time	17.7%	20.0%	21.5%	21.0%	19.4%	22.9%	19.1%	21.1%	21.4%	21.4%
1st-Time Trans	3.5%	3.4%	3.5%	4.0%	4.5%	4.4%	5.0%	4.9%	4.6%	4.8%
Returning	23.2%	20.9%	20.2%	18.5%	18.8%	15.5%	19.2%	19.3%	18.3%	15.8%
Continuing	50.9%	49.2%	48.7%	50.2%	51.5%	50.4%	48.9%	47.3%	47.9%	51.5%
Special Admit	4.4%	6.4%	6.1%	6.3%	5.8%	6.8%	7.8%	7.4%	7.8%	6.5%
Unreported	0.3%	0.1%	0.0%	0.0%	0.0%	0.0%	0.0%	0.0%	0.0%	0.0%
<b>Total Percent</b>	<b>100.0%</b>	<b>100.0%</b>	<b>100.0%</b>	<b>100.0%</b>	<b>100.0%</b>	<b>100.0%</b>	<b>100.0%</b>	<b>100.0%</b>	<b>100.0%</b>	<b>100.0%</b>

Source: California Community Colleges Chancellor's Office: MIS Referential Files; SB15 – Student-Enrollment-Status

**IV. FALL TERM ENROLLMENT TRENDS**

**B-5. Citizenship Status**

Over the last ten years at Ventura College, there has been a slight increase in the percentage of U.S. Citizens and a slight decrease in the percentage of Permanent Residents. In fall 2009, 89.2% of VC students were U.S. Citizens and 6.7% were Permanent Residents.



Ventura College Students by Citizenship Status Fall Terms: 2000 through 2009										
Citizenship Status	Fall Term									
	2000	2001	2002	2003	2004	2005	2006	2007	2008	2009
U. S. Citizen	10,613	10,597	11,290	10,839	10,490	10,391	10,881	11,657	12,486	12,712
Perm Resident	992	967	1,258	1,206	1,026	989	1,017	950	1,018	954
Temp Resident	54	65	77	83	74	65	89	66	69	58
Refugee	6	6	6	5	11	11	10	15	12	16
Student Visa	150	162	145	135	111	87	73	55	61	58
Other	42	59	135	172	203	221	332	363	359	302
Unknown	492	475	467	388	297	251	226	226	259	155
<b>Total Count</b>	<b>12,349</b>	<b>12,331</b>	<b>13,378</b>	<b>12,828</b>	<b>12,212</b>	<b>12,015</b>	<b>12,628</b>	<b>13,332</b>	<b>14,264</b>	<b>14,255</b>
Citizenship Status	Fall Term									
	2000	2001	2002	2003	2004	2005	2006	2007	2008	2009
U. S. Citizen	86.0%	85.9%	84.4%	84.5%	85.9%	86.5%	86.2%	87.5%	87.6%	89.2%
Perm Resident	8.0%	7.8%	9.4%	9.4%	8.4%	8.2%	8.0%	7.1%	7.1%	6.7%
Temp Resident	0.4%	0.5%	0.6%	0.7%	0.6%	0.6%	0.7%	0.5%	0.5%	0.4%
Refugee	0.1%	0.1%	0.0%	0.0%	0.1%	0.1%	0.1%	0.1%	0.1%	0.1%
Student Visa	1.2%	1.3%	1.1%	1.1%	0.9%	0.7%	0.6%	0.4%	0.4%	0.4%
Other	0.3%	0.5%	1.0%	1.3%	1.7%	1.8%	2.6%	2.7%	2.5%	2.1%
Unknown	4.0%	3.9%	3.5%	3.0%	2.4%	2.1%	1.8%	1.7%	1.8%	1.1%
<b>Total Percent</b>	<b>100.0%</b>	<b>100.0%</b>	<b>100.0%</b>	<b>100.0%</b>	<b>100.0%</b>	<b>100.0%</b>	<b>100.0%</b>	<b>100.0%</b>	<b>100.0%</b>	<b>100.0%</b>

Source: California Community Colleges Chancellor's Office: MIS Referential Files; SB06 – Student-Citizenship



**IV. FALL TERM ENROLLMENT TRENDS**

**B-6. Educational Goal – Data Table**

Over the decade, the percentage of VC students declaring an Educational Goal of obtaining a **degree** or of **transferring** to a 4-year school (Goals A – D) has **increased** from **28.1%** in fall 2000 to **54.6%** in fall 2009. Additionally, the percentage of Undecided and Unreported (Goals M and X) has **decreased** from **52.8%** in fall 2000 to **18.3%** in fall 2009.

Ventura College Students by Educational Goal Fall Terms: 2000 through 2009										
Educational Goal	Fall Term									
	2000	2001	2002	2003	2004	2005	2006	2007	2008	2009
A. AA & Trn	1,933	1,568	3,097	3,815	4,006	4,172	4,391	4,739	5,348	5,772
B. Trn–no AA	842	747	793	860	941	1,009	1,042	1,100	1,120	1,161
C. AA–no Trn	294	230	443	526	639	682	736	832	858	969
D. Voc Deg	319	305	324	222	196	167	161	158	160	143
E. Voc Cert	189	178	231	213	189	167	144	158	144	151
F. Career Plan	384	291	479	427	373	323	323	322	329	329
G. Job Skills	377	284	525	465	479	438	493	509	487	516
H. Job Advan	251	161	346	304	273	231	298	292	268	218
I. License	77	55	133	155	151	154	165	179	163	214
J. Ed Develop	334	259	491	552	453	458	550	545	492	495
K. Basic Skills	173	153	237	345	338	336	387	427	461	371
L. HSD Credit	516	537	1,062	899	917	1,038	1,277	1,367	1,648	1,514
M. Undecided	3,319	2,858	4,213	3,411	2,769	2,540	2,387	2,571	2,586	2,499
N. Take Credit	---	---	---	---	---	---	---	3	1	4
O. 4-yr student	---	---	---	---	---	---	---	81	186	198
X. Unreported	3,047	4,764	428	452	383	268	247	241	210	200
<b>Total Count</b>	<b>12,055</b>	<b>12,390</b>	<b>12,802</b>	<b>12,646</b>	<b>12,107</b>	<b>11,983</b>	<b>12,601</b>	<b>13,524</b>	<b>14,461</b>	<b>14,754</b>

Educational Goal	Fall Term									
	2000	2001	2002	2003	2004	2005	2006	2007	2008	2009
A. AA & Trn	16.0%	12.7%	24.2%	30.2%	33.1%	34.8%	34.9%	35.0%	37.0%	39.1%
B. Trn–no AA	7.0%	6.0%	6.2%	6.8%	7.8%	8.4%	8.3%	8.1%	7.7%	7.9%
C. AA–no Trn	2.4%	1.9%	3.5%	4.2%	5.3%	5.7%	5.8%	6.2%	5.9%	6.6%
D. Voc Deg	2.7%	2.5%	2.5%	1.8%	1.6%	1.4%	1.3%	1.2%	1.1%	1.0%
E. Voc Cert	1.6%	1.4%	1.8%	1.7%	1.6%	1.4%	1.1%	1.2%	1.0%	1.0%
F. Career Plan	3.2%	2.4%	3.7%	3.4%	3.1%	2.7%	2.5%	2.4%	2.9%	2.2%
G. Job Skills	3.1%	2.3%	4.1%	3.7%	4.0%	3.7%	3.9%	3.8%	3.4%	3.5%
H. Job Advan	2.1%	1.3%	2.7%	2.4%	2.3%	1.9%	2.4%	2.2%	1.8%	1.5%
I. License	0.6%	0.4%	1.0%	1.2%	1.3%	1.3%	1.3%	1.3%	1.1%	1.5%
J. Ed Develop	2.8%	2.1%	3.8%	4.4%	3.7%	3.8%	4.4%	4.0%	3.4%	3.4%
K. Basic Skills	1.4%	1.2%	1.9%	2.7%	2.8%	2.8%	3.1%	3.2%	3.2%	2.5%
L. HSD Credit	4.3%	4.3%	8.3%	7.1%	7.6%	8.7%	10.1%	10.1%	11.4%	10.3%
M. Undecided	27.5%	23.1%	32.9%	27.0%	22.9%	21.2%	18.9%	19.0%	17.9%	16.9%
N. Take Credit	---	---	---	---	---	---	---	0.0%	0.0%	0.0%
O. 4-yr student	---	---	---	---	---	---	---	0.6%	1.3%	1.3%
X. Unreported	25.3%	38.4%	3.3%	3.6%	3.2%	268%	1.9%	1.9%	1.4%	1.4%
<b>Total Percent</b>	<b>100.0%</b>	<b>100.0%</b>	<b>100.0%</b>	<b>100.0%</b>	<b>100.0%</b>	<b>100.0%</b>	<b>100.0%</b>	<b>100.0%</b>	<b>100.0%</b>	<b>100.0%</b>

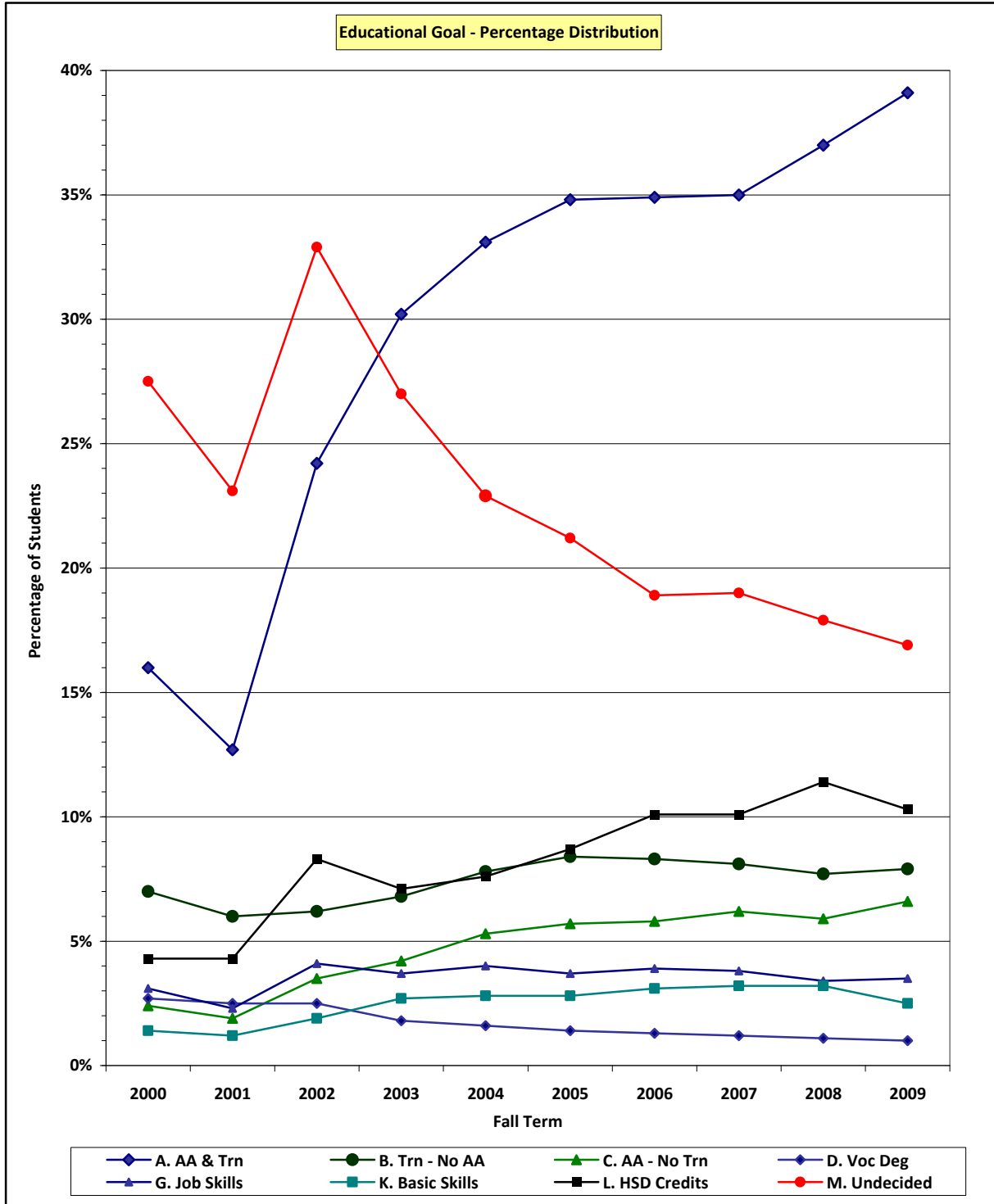
Source: Data were obtained from 4th-week census files maintained in the VC Office of Research and Evaluation.

The data in the Referential Files (SB14 – Student-Educational-Goal) were found to have much higher percentages of “M. Undecided” and “X. Unreported” goals than were reported in the VCCCD 4th-week census files.

**IV. FALL TERM ENROLLMENT TRENDS**

**B-6. Educational Goal – Chart**

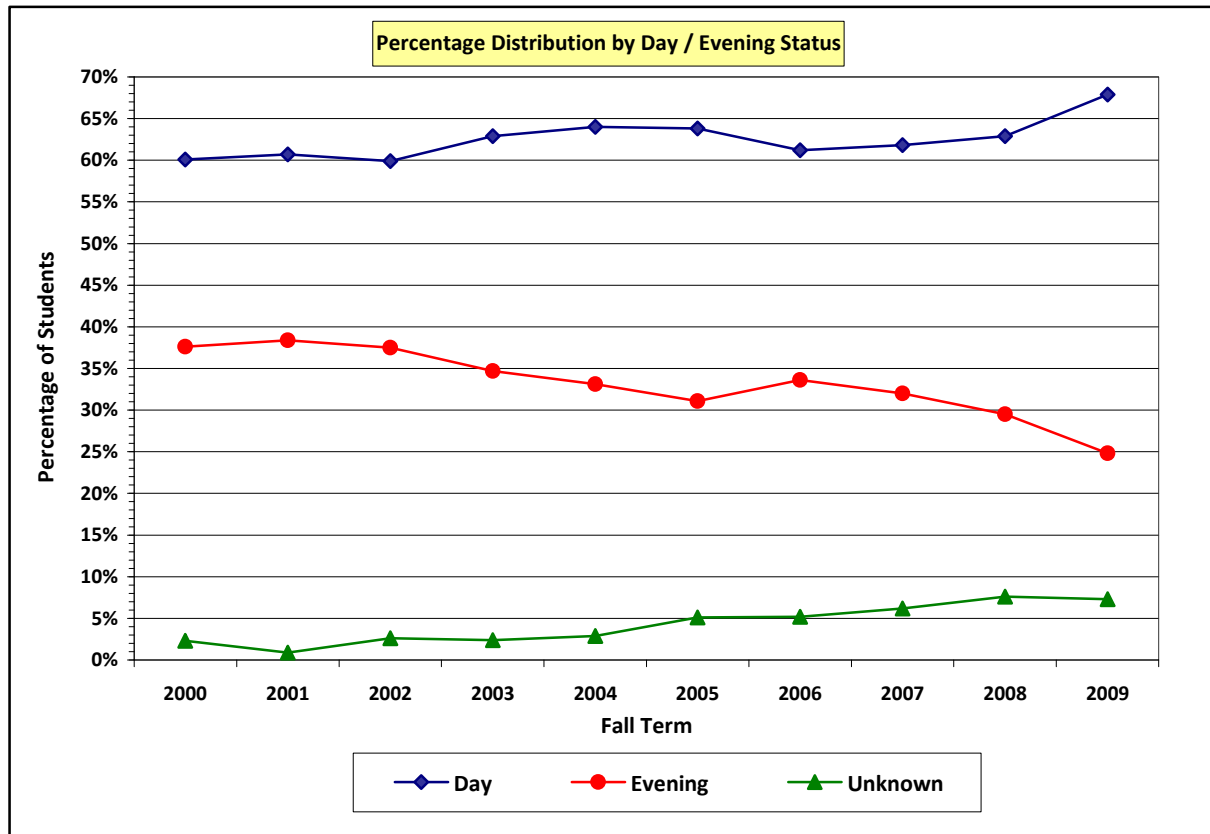
The chart depicts percentage distributions of **eight** of the **16** Educational Goals presented in the data table on the previous page. The goals in the chart relate to **degree and/or transfer** (Goals A – D), **Job Skills**, **Basic Skills**, **Credits for HSD or GED**, and **Undecided**.



**IV. FALL TERM ENROLLMENT TRENDS**

**B-7. Day / Evening Status**

The percentage of VC students classified as “Day” has increased steadily from **60.1%** in fall 2000 to **67.9%** in fall 2009. In that same period, the percentage of “Evening” students has declined from **37.6%** to **24.8%**. Additionally, the percentage of “Unknown” has increased from **2.3%** to **7.3%**, due to the fact that most “distance education” classes are classified as having a meeting status of Unknown. Therefore, students enrolled solely in “distance education” classes would be classified with an “Unknown” Day/Evening status.



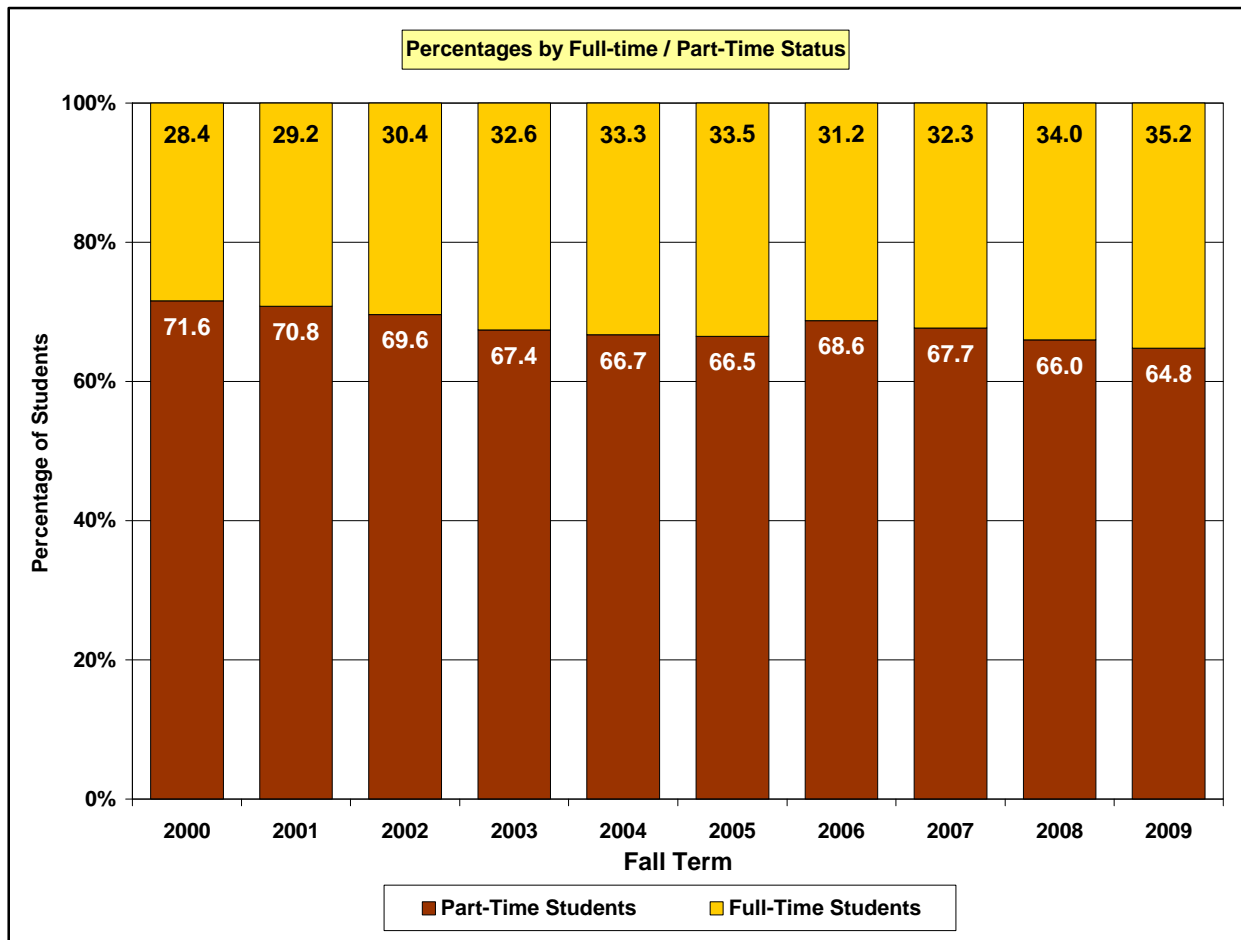
Ventura College Students by Day/Evening Status										
Fall Terms: 2000 through 2009										
Day/Evening Status	Fall Term									
	2000	2001	2002	2003	2004	2005	2006	2007	2008	2009
Day	7,424	7,485	8,010	8,064	7,819	7,666	7,733	8,244	8,974	9,677
Evening	4,643	4,736	5,023	4,451	4,046	3,741	4,238	4,263	4,206	3,541
Unknown	282	110	345	313	347	608	657	825	1,084	1,037
<b>Total Count</b>	<b>12,349</b>	<b>12,331</b>	<b>13,378</b>	<b>12,828</b>	<b>12,212</b>	<b>12,015</b>	<b>12,628</b>	<b>13,332</b>	<b>14,264</b>	<b>14,255</b>
Day/Evening Status	Fall Term									
	2000	2001	2002	2003	2004	2005	2006	2007	2008	2009
Day	60.1%	60.7%	59.9%	62.9%	64.0%	63.8%	61.2%	61.8%	62.9%	67.9%
Evening	37.6%	38.4%	37.5%	34.7%	33.1%	31.1%	33.6%	32.0%	29.5%	24.8%
Unknown	2.3%	0.9%	2.6%	2.4%	2.9%	5.1%	5.2%	6.2%	7.6%	7.3%
<b>Total Percent</b>	<b>100.0%</b>	<b>100.0%</b>	<b>100.0%</b>	<b>100.0%</b>	<b>100.0%</b>	<b>100.0%</b>	<b>100.0%</b>	<b>100.0%</b>	<b>100.0%</b>	<b>100.0%</b>

Source: California Community Colleges Chancellor’s Office: MIS Referential Files; STD6 – Student-Day-Evening-Class-Code-2

**IV. FALL TERM ENROLLMENT TRENDS**

**B-8. Full-Time / Part-Time Status**

The percentage of VC students classified as Full-Time has steadily increased from **28.4%** in fall 2000 to **35.2%** in fall 2009, while the percentage of Part-Time students has decreased from **71.6%** to **64.8%**.



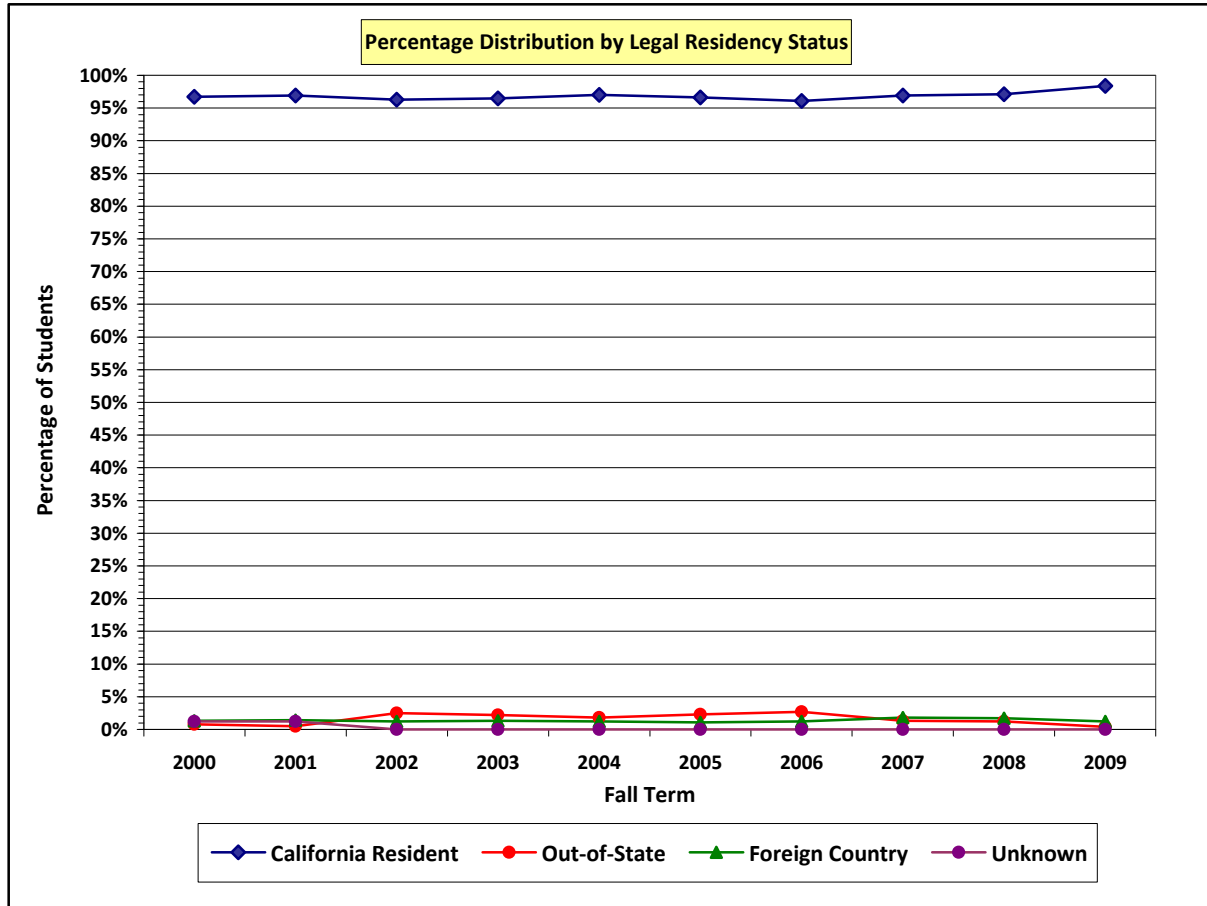
Ventura College Students by Full-Time/Part-Time Status										
Fall Terms: 2000 through 2009										
Full-Time or Part-Time	Fall Term									
	2000	2001	2002	2003	2004	2005	2006	2007	2008	2009
Full-Time	3,510	3,603	4,065	4,184	4,070	4,029	3,935	4,308	4,846	5,015
Part-Time	8,839	8,728	9,313	8,644	8,142	7,986	8,693	9,024	9,418	9,240
<b>Total Count</b>	<b>12,349</b>	<b>12,331</b>	<b>13,378</b>	<b>12,828</b>	<b>12,212</b>	<b>12,015</b>	<b>12,628</b>	<b>13,332</b>	<b>14,264</b>	<b>14,255</b>
Full-Time or Part-Time	Fall Term									
	2000	2001	2002	2003	2004	2005	2006	2007	2008	2009
Full-Time	28.4%	29.2%	30.4%	32.6%	33.3%	33.5%	31.2%	32.3%	34.0%	35.2%
Part-Time	71.6%	70.8%	69.6%	67.4%	66.7%	66.5%	68.6%	67.7%	66.0%	64.8%
<b>Total Percent</b>	<b>100.0%</b>	<b>100.0%</b>	<b>100.0%</b>	<b>100.0%</b>	<b>100.0%</b>	<b>100.0%</b>	<b>100.0%</b>	<b>100.0%</b>	<b>100.0%</b>	<b>100.0%</b>

Source: California Community Colleges Chancellor's Office: MIS Referential Files: Data Elements: XB05 – Section-Units-Maximum; XB01 – Section-Accounting-Method *not equal to* 'O' (Claimed for State Apportionment)

**IV. FALL TERM ENROLLMENT TRENDS**

**B-9. Legal Residency Status**

Over 96% of students attending Ventura College in the past 10 years were Legal Residents of California.



Ventura College Students by Legal Residency Status Fall Terms: 2000 through 2009										
Legal Residency	Fall Term									
	2000	2001	2002	2003	2004	2005	2006	2007	2008	2009
California	11,946	11,950	12,881	12,378	11,841	11,601	12,142	12,925	13,856	14,027
Out-of-State	96	64	336	281	222	278	336	172	168	52
Foreign Country	158	168	161	169	149	136	150	235	240	176
Unknown	149	149	0	0	0	0	0	0	0	0
<b>Total Count</b>	<b>12,349</b>	<b>12,331</b>	<b>13,378</b>	<b>12,828</b>	<b>12,212</b>	<b>12,015</b>	<b>12,628</b>	<b>13,332</b>	<b>14,264</b>	<b>14,255</b>
Legal Residency	Fall Term									
	2000	2001	2002	2003	2004	2005	2006	2007	2008	2009
California	96.7%	96.9%	96.3%	96.5%	97.0%	96.6%	96.1%	96.9%	97.1%	98.4%
Out-of-State	0.8%	0.5%	2.5%	2.2%	1.8%	2.3%	2.7%	1.3%	1.2%	0.4%
Foreign Country	1.3%	1.4%	1.2%	1.3%	1.2%	1.1%	1.2%	1.8%	1.7%	1.2%
Unknown	1.2%	1.2%	0.0%	0.0%	0.0%	0.0%	0.0%	0.0%	0.0%	0.0%
<b>Total Percent</b>	<b>100.0%</b>	<b>100.0%</b>	<b>100.0%</b>	<b>100.0%</b>	<b>100.0%</b>	<b>100.0%</b>	<b>100.0%</b>	<b>100.0%</b>	<b>100.0%</b>	<b>100.0%</b>

Source: California Community Colleges Chancellor's Office: MIS Referential Files; SB09 – Student-Residence-Code

**IV. FALL TERM ENROLLMENT TRENDS**

**B-10. Ventura County Residents Attending VC – Data Table**

The data in this table indicate the numbers of VC students who were legal residents of California and who also resided in Ventura County (excluded from the table are international students, out-of-state students, and students from other California counties). Students are distributed according to the cities/areas in which they resided. Over the decade, the cities/areas in which the highest percentages of VC students resided have been: Ventura, Oxnard, Santa Paula, Camarillo, the Ojai Valley, and Fillmore/Piru. A chart depicting the percentage distribution of VC students by Ventura County cities/areas appears on the next page.

Ventura College										
Students Who were Residents of Ventura County										
Fall Terms: 2000 through 2009										
California Resident	Fall Term									
	2000	2001	2002	2003	2004	2005	2006	2007	2008	2009
Camarillo	967	820	969	926	921	919	980	1,106	1,176	1,116
Fillmore/Piru	567	554	538	572	628	602	605	654	746	686
Moorpark	35	39	42	34	39	47	53	49	59	59
Newbury Park	70	79	105	99	90	81	100	112	152	129
Ojai Valley	850	883	834	843	821	758	793	817	795	828
Oxnard	2,447	2,556	2,603	2,693	2,718	2,593	2,738	3,074	3,457	3,568
Port Hueneme	296	276	281	296	316	293	288	282	299	298
Santa Paula	1,136	1,297	1,257	1,222	1,222	1,242	1,314	1,262	1,387	1,335
Simi Valley	80	51	70	70	75	69	73	86	101	94
Thousnd Oaks	80	73	77	87	82	85	91	90	99	114
Ventura City	4,973	5,002	4,730	4,621	4,455	4,469	4,639	4,894	5,135	5,000
<b>Ventura Cnty</b>	<b>11,509</b>	<b>11,630</b>	<b>11,506</b>	<b>11,463</b>	<b>11,367</b>	<b>11,158</b>	<b>11,674</b>	<b>12,426</b>	<b>13,406</b>	<b>13,227</b>
<b>All Others</b>	<b>840</b>	<b>701</b>	<b>1,872</b>	<b>1,365</b>	<b>845</b>	<b>857</b>	<b>954</b>	<b>906</b>	<b>858</b>	<b>998</b>
<b>Total Student</b>	<b>12,349</b>	<b>12,331</b>	<b>13,378</b>	<b>12,828</b>	<b>12,212</b>	<b>12,015</b>	<b>12,628</b>	<b>13,332</b>	<b>14,264</b>	<b>14,225</b>
California Resident	Fall Term									
	2000	2001	2002	2003	2004	2005	2006	2007	2008	2009
Camarillo	7.8%	6.7%	7.2%	7.2%	7.5%	7.7%	7.7%	8.3%	8.2%	7.8%
Fillmore/Piru	4.6%	4.5%	4.0%	4.4%	5.1%	5.0%	4.8%	4.9%	5.2%	4.8%
Moorpark	0.3%	0.3%	0.3%	0.3%	0.3%	0.4%	0.4%	0.4%	0.4%	0.4%
Newbury Park	0.6%	0.6%	0.8%	0.8%	0.7%	0.7%	0.8%	0.8%	1.1%	0.9%
Ojai Valley	6.9%	7.2%	6.2%	6.6%	6.7%	6.3%	6.3%	6.1%	5.6%	5.8%
Oxnard	19.8%	20.7%	19.5%	21.0%	22.3%	21.6%	21.7%	23.1%	24.2%	25.0%
Port Hueneme	2.4%	2.2%	2.1%	2.3%	2.6%	2.4%	2.3%	2.1%	2.1%	2.1%
Santa Paula	9.2%	10.5%	9.4%	9.5%	10.0%	10.3%	10.4%	9.5%	9.7%	9.4%
Simi Valley	0.7%	0.4%	0.5%	0.5%	0.6%	0.6%	0.6%	0.7%	0.7%	0.7%
Thousnd Oaks	0.7%	0.6%	0.6%	0.7%	0.7%	0.7%	0.7%	0.7%	0.7%	0.8%
Ventura City	40.7%	40.6%	35.4%	36.0%	36.5%	37.2%	36.7%	36.7%	36.0%	35.1%
<b>Ventura Cnty</b>	<b>93.2%</b>	<b>94.3%</b>	<b>86.0%</b>	<b>89.4%</b>	<b>93.1%</b>	<b>92.9%</b>	<b>92.5%</b>	<b>93.2%</b>	<b>94.0%</b>	<b>92.8%</b>
<b>All Others</b>	<b>6.8%</b>	<b>5.7%</b>	<b>14.0%</b>	<b>10.6%</b>	<b>6.9%</b>	<b>7.1%</b>	<b>7.5%</b>	<b>6.8%</b>	<b>6.0%</b>	<b>7.2%</b>
<b>Total Percent</b>	<b>100.0%</b>	<b>100.0%</b>	<b>100.0%</b>	<b>100.0%</b>	<b>100.0%</b>	<b>100.0%</b>	<b>100.0%</b>	<b>100.0%</b>	<b>100.0%</b>	<b>100.0%</b>

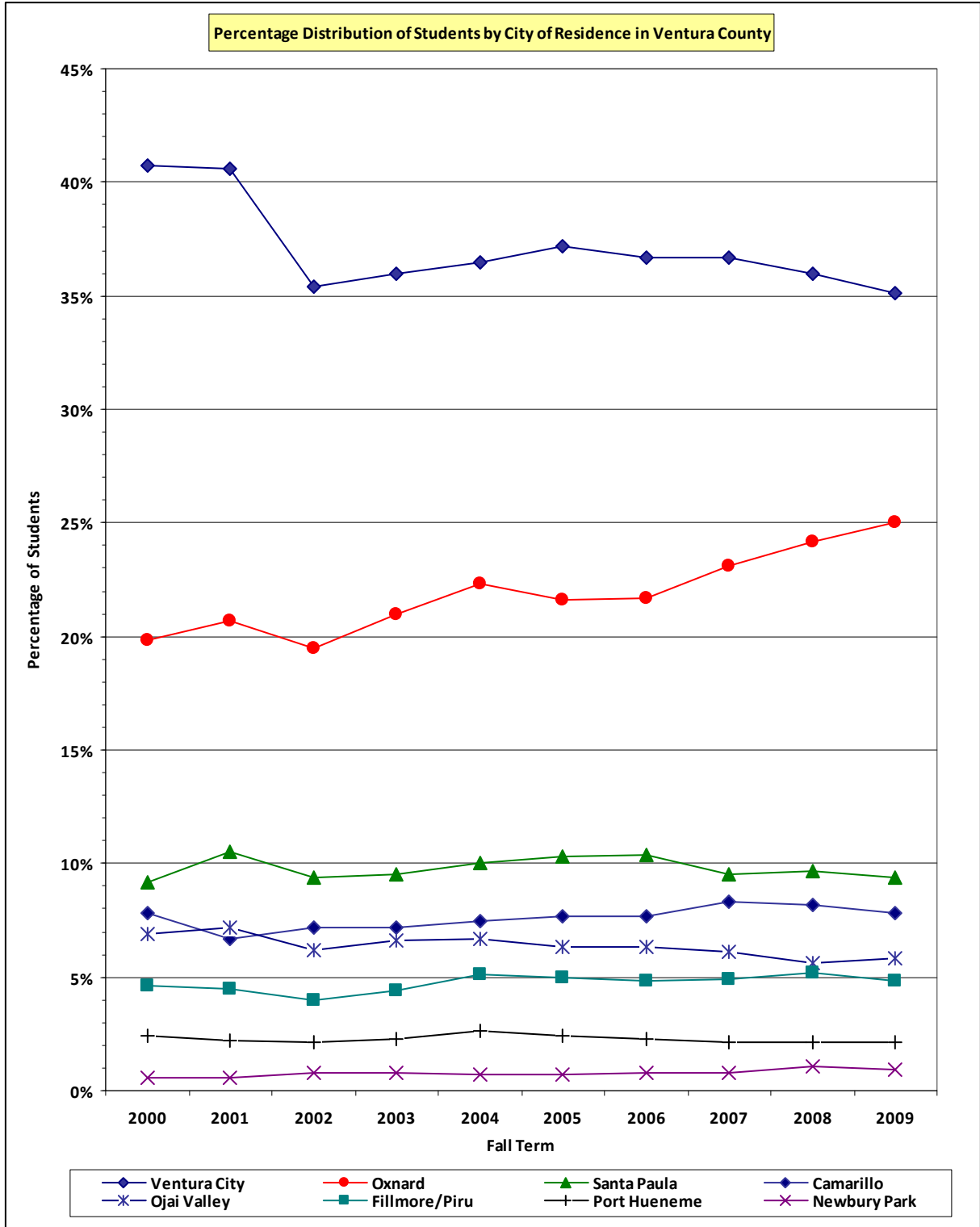
Source: California Community Colleges Chancellor's Office: MIS Referential Files; SB09 – Student-Residence-Code and SB08 – Student-ZIP-Code

Note: For Fall 2001, Fall 2002, and Fall 2003: Because Student-ZIP-Code data in the Referential Files were incomplete (many ZIP Code fields were coded XXXXX), data for these terms were obtained from 4th-week census files maintained in the VC Office of Research and Evaluation. Further, in Fall 2002 and Fall 2003, the total percentages of Ventura County students may be understated.

**IV. FALL TERM ENROLLMENT TRENDS**

**B-10. Ventura County Residents Attending VC – Chart**

Percentage distributions for VC students residing in the top **eight** cities/areas in Ventura County are depicted in the following chart. Percentages for cities/areas are graphed for fall terms 2000 through 2009.



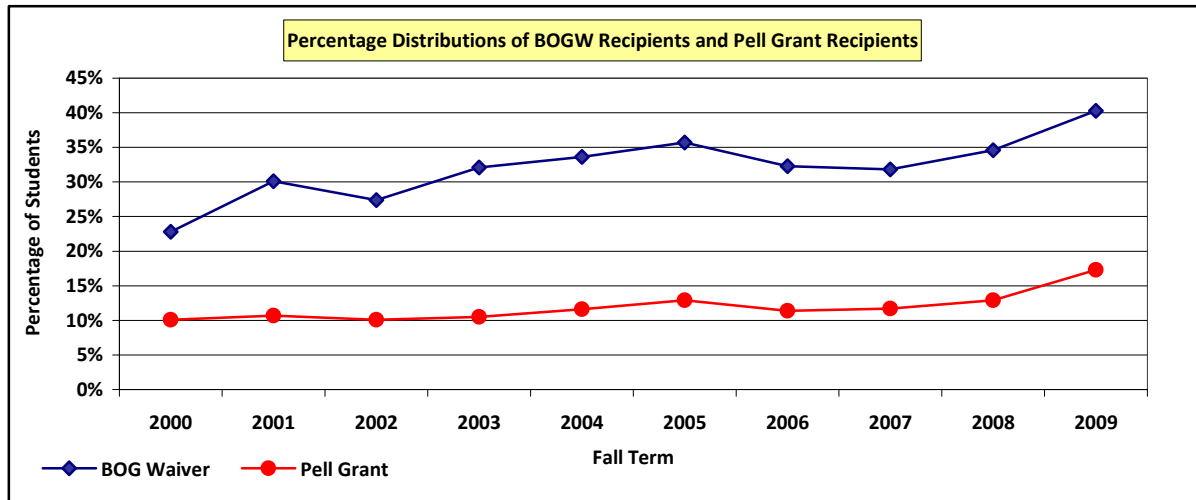
**IV. FALL TERM ENROLLMENT TRENDS**

**B-11. Special Student Services Programs and Financial Aid**

**EAC and EOPS**

Over the past 10 years, the percentages of VC students who participated in *either* the **EAC** (Educational Assistance Center – DSPS) *or* **EOPS** were between **4.2%** and **5.7%** (in fall 2005, however, the EAC participation rate was 6.3%).

**BOG Waivers and Pell Grants**



Ventura College										
Fall Terms: 2000 – 2009										
Special Student Services Programs										
EAC (DSPS)	Fall Term									
	2000	2001	2002	2003	2004	2005	2006	2007	2008	2009
Participants	686	635	701	690	675	751	713	690	776	710
% All Students	5.6%	5.2%	5.2%	5.4%	5.5%	6.3%	5.7%	5.2%	5.4%	5.0%
EOPS	Fall Term									
	2000	2001	2002	2003	2004	2005	2006	2007	2008	2009
Participants	523	693	729	607	626	674	589	642	647	685
% All Students	4.2%	5.6%	5.5%	4.7%	5.1%	5.6%	4.7%	4.8%	4.5%	4.8%
Financial Aid Grants										
BOG Waiver	Fall Term									
	2000	2001	2002	2003	2004	2005	2006	2007	2008	2009
Recipients	3,554	3,717	3,668	4,117	4,103	4,283	4,072	4,244	4,935	5,749
% All Students	28.8%	30.1%	27.4%	32.1%	33.6%	35.7%	32.3%	31.8%	34.6%	40.3%
Pell Grant	Start of Fall Term									
	2000	2001	2002	2003	2004	2005	2006	2007	2008	2009
Recipients	1,250	1,318	1,347	1,345	1,416	1,551	1,437	1,559	1,839	2,465
% All Students	10.1%	10.7%	10.1%	10.5%	11.6%	12.9%	11.4%	11.7%	12.9%	17.3%

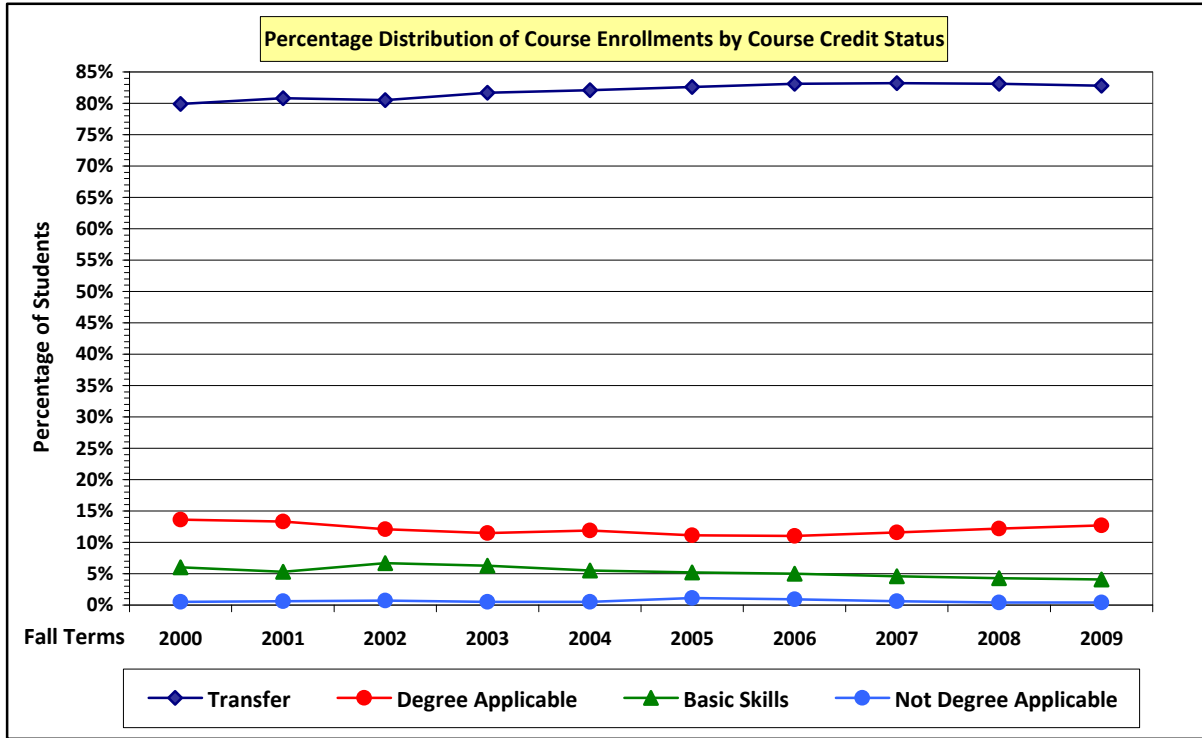
Source: California Community Colleges Chancellor's Office: MIS Referential Files; Data Elements: SD01 – Student-Primary-Disability; SE01 – Student-EOPS-Eligibility-Factor; SF21 – Student-Aid-Award-Type



**IV. FALL TERM ENROLLMENT TRENDS**

**C-1. Course Enrollments – By Credit Status**

Over the decade, the percentage of **Transfer**-level courses at VC has increased slightly, accompanied by decreases in the percentages of **Basic Skills**, **Degree-Applicable** and **Non-Degree-Applicable** courses.



Ventura College										
Course Enrollments (Seatcounts) by Credit Status										
Fall Terms: 2000 through 2009										
Credit Status	Fall Term									
	2000	2001	2002	2003	2004	2005	2006	2007	2008	2009
Transfer	24,733	25,404	26,992	26,616	25,851	25,729	26,355	29,137	32,036	32,849
Degree Applic.	4,214	4,187	4,068	3,751	3,742	3,464	3,494	4,082	4,705	5,031
Not Deg. App.	164	174	222	168	161	330	270	214	178	150
Basic Skills	1,840	1,659	2,231	2,044	1,727	1,633	1,586	1,596	1,653	1,648
<b>Tot. Seatcount</b>	<b>30,951</b>	<b>31,242</b>	<b>33,513</b>	<b>32,579</b>	<b>31,481</b>	<b>31,156</b>	<b>31,705</b>	<b>35,029</b>	<b>38,572</b>	<b>39,678</b>
Credit Status	Fall Term									
	2000	2001	2002	2003	2004	2005	2006	2007	2008	2009
Transfer	79.9%	80.8%	80.5%	81.7%	82.1%	82.6%	83.1%	83.2%	83.1%	82.8%
Degree Applic.	13.6%	13.3%	12.1%	11.5%	11.9%	11.1%	11.0%	11.6%	12.2%	12.7%
Not Deg. App.	0.5%	0.6%	0.7%	0.5%	0.5%	1.1%	0.9%	0.6%	0.4%	0.4%
Basic Skills	6.0%	5.3%	6.7%	6.3%	5.5%	5.2%	5.0%	4.6%	4.3%	4.1%
<b>Total Percent</b>	<b>100.0%</b>	<b>100.0%</b>	<b>100.0%</b>	<b>100.0%</b>	<b>100.0%</b>	<b>100.0%</b>	<b>100.0%</b>	<b>100.0%</b>	<b>100.0%</b>	<b>100.0%</b>

Source: California Community Colleges Chancellor's Office: MIS Referential Files

Data Element SXD2 – Enrollment-Credit-Status:

T = Transferable/Credit - Degree Applicable

D = Not Transferable /Credit - Degree Applicable

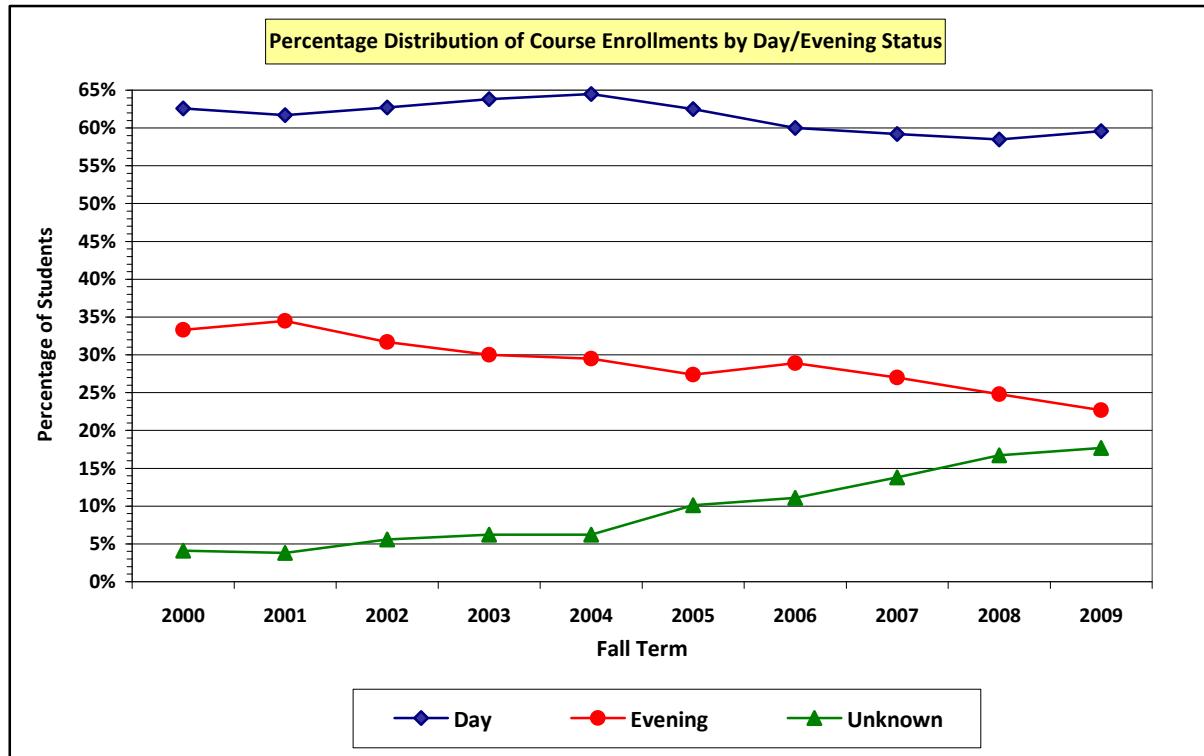
C = Not Transferable/Credit - Not Degree Applicable

S = Basic Skills/Not Transferable/Credit - Not Degree Applicable

**IV. FALL TERM ENROLLMENT TRENDS**

**C-2. Course Enrollments – By Day / Evening Status**

At VC, the numbers of **Day** and **Evening** sections are decreasing as the number of “distance education” sections increase. Most “distance education” sections are given a Day/Evening Code of **Unknown**.



Notes on the Coding of Day/Evening Status:

- Classes are coded “Unknown” if (a) they have irregular meeting times or (b) they are TBA (*to be arranged*).
- Classes that meet exclusively on Saturday and/or Sunday are coded as “Evening.”
- Most Distance Education classes are coded “Unknown.”

Ventura College – Course Enrollments (Seatcounts) by Day/Evening Designation										
Fall Terms: 2000 through 2009										
Day/Evening Designation	Fall Term									
	2000	2001	2002	2003	2004	2005	2006	2007	2008	2009
Day	19,362	19,406	20,999	20,796	20,319	19,453	19,041	20,751	22,562	23,633
Evening	10,326	10,834	10,638	9,763	9,210	8,545	9,153	9,440	9,572	9,032
Unknown	1,263	1,184	1,876	2,020	1,952	3,158	3,511	4,838	6,438	7,013
<b>Tot. Seatcount</b>	<b>30,951</b>	<b>31,424</b>	<b>33,513</b>	<b>32,579</b>	<b>31,481</b>	<b>31,156</b>	<b>31,705</b>	<b>35,029</b>	<b>38,572</b>	<b>39,678</b>
Day/Evening Designation	Fall Term									
	2000	2001	2002	2003	2004	2005	2006	2007	2008	2009
Day	62.6%	61.7%	62.7%	63.8%	64.5%	62.5%	60.0%	59.2%	58.5%	59.6%
Evening	33.3%	34.5%	31.7%	30.0%	29.3%	27.4%	28.9%	27.0%	24.8%	22.7%
Unknown	4.1%	3.8%	5.6%	6.2%	6.2%	10.1%	11.1%	13.8%	16.7%	17.7%
<b>Total Percent</b>	<b>100.0%</b>	<b>100.0%</b>	<b>100.0%</b>	<b>100.0%</b>	<b>100.0%</b>	<b>100.0%</b>	<b>100.0%</b>	<b>100.0%</b>	<b>100.0%</b>	<b>100.0%</b>

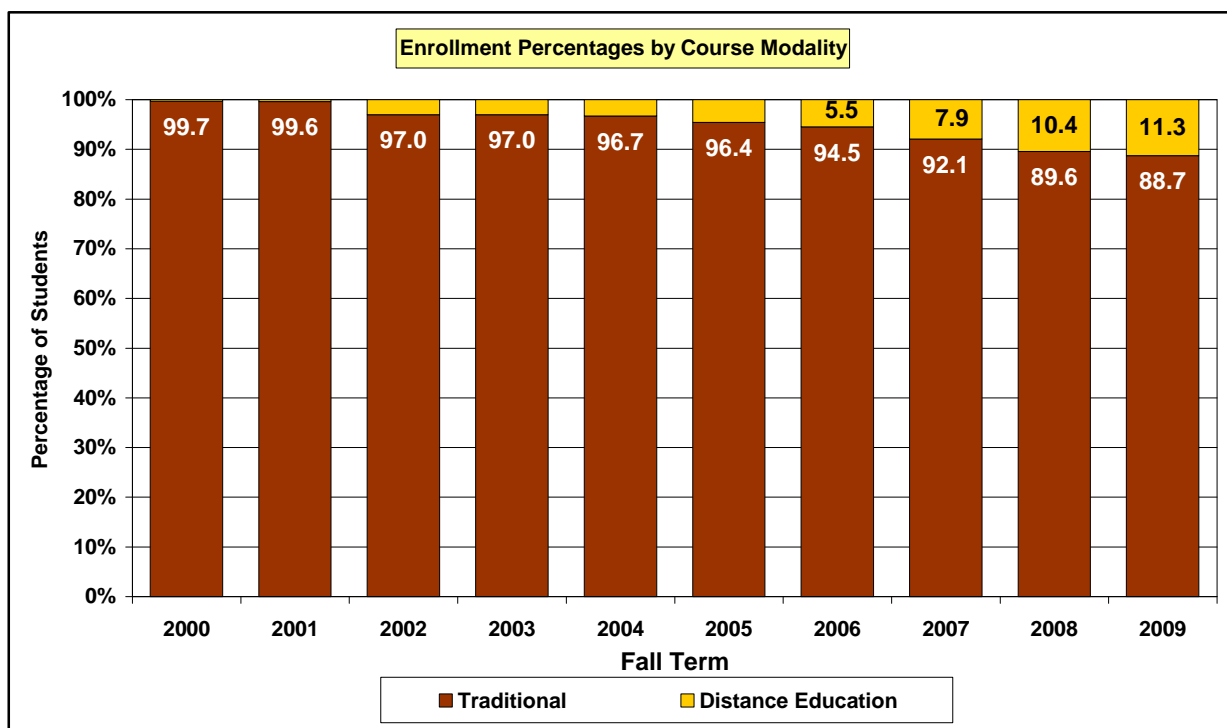
Source: California Community Colleges Chancellor’s Office: MIS Referential Files  
Data Element XBD3 – Section-Day-Evening-Class-Code: A = Day; B = Evening; X = Unknown

**IV. FALL TERM ENROLLMENT TRENDS**

**C-3. Course Enrollments – Distance Education: By Day / Evening Status**

In the data table below, VC enrollments in “distance education” classes are categorized by Day/Evening Status. There are very few enrollments in either **Day** or **Evening** “distance education” classes because the great majority of DE courses are classified as **Unknown** (in fall 2009, 95% of enrollments in “distance education” classes were in classes coded as Unknown). Additional analyses of “distance education” enrollments are provided in the **Annual Enrollment Trends** section of this report (sub-sections C-2. Enrollments by Course Modality and C-3. Outcomes by Course Modality).

Enrollments in “distance education” classes grew from **0.3%** of all course enrollments in fall 2000 to **11.3%** in fall 2009. On an annual basis, “distance education” enrollments accounted for **12.6%** of all course enrollments in **2009–2010**.



Ventura College – Distance Education Enrollments (Seatcounts) by Day/Evening Designation										
Fall Terms: 2000 through 2009										
Day/Evening Code	Fall Term									
	2000	2001	2002	2003	2004	2005	2006	2007	2008	2009
Day	0	0	0	25	46	56	50	92	121	164
Evening	21	74	66	50	46	30	24	22	24	55
Unknown	73	45	952	915	919	1,344	1,662	2,664	3,851	4,258
<b>D/E Seatcount</b>	<b>94</b>	<b>119</b>	<b>1,018</b>	<b>990</b>	<b>1,011</b>	<b>1,430</b>	<b>1,736</b>	<b>2,778</b>	<b>3,996</b>	<b>4,477</b>
<b>Tot. Seatcount</b>	<b>30,951</b>	<b>31,424</b>	<b>33,513</b>	<b>32,579</b>	<b>31,481</b>	<b>31,156</b>	<b>31,705</b>	<b>35,029</b>	<b>38,572</b>	<b>39,678</b>
<b>D/E Percent</b>	<b>0.3%</b>	<b>0.4%</b>	<b>3.0%</b>	<b>3.0%</b>	<b>3.3%</b>	<b>4.6%</b>	<b>5.5%</b>	<b>7.9%</b>	<b>10.4%</b>	<b>11.3%</b>

Source: California Community Colleges Chancellor’s Office: MIS Referential Files  
 Data Element XBD3 – Section-Day-Evening-Class-Code: A = Day; B = Evening; X = Unknown  
 Data Element XF01 – Session-Instruction-Method: Where coded as Distance Education (Codes 50 to 72)