

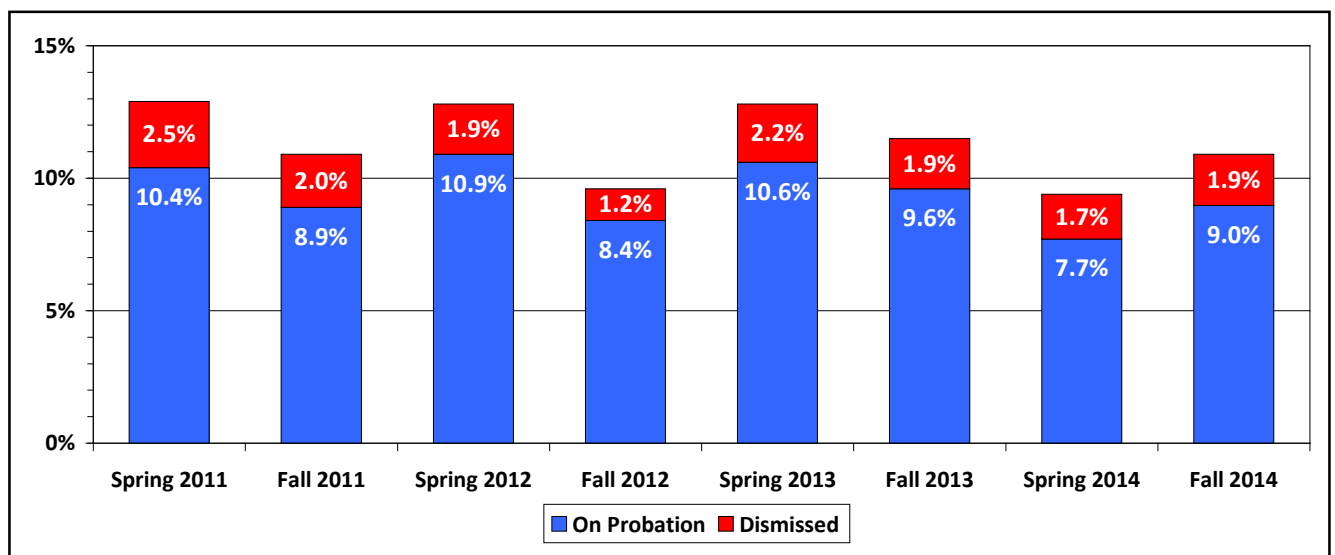
Ventura College  
Office of Research and Evaluation  
**Fall 2014 – VC Student Academic Standing**

The summary data presented in the following tables are based on student enrollments at the sixth week of instruction (**September 25, 2014**). Data were extracted from the Banner System via SDA.

• **Academic Standings of Fall 2014 VC Students**

Academic Standing		Students		Units	
Code	Description	Number	Percent	Number	Percent
31	Probation 1 - Academic Progress	95	0.73%	755.5	0.68%
32	Probation 2 - Academic Progress	48	0.37%	257.5	0.23%
3X	Extended Progress Probation	4	0.03%	18.0	0.02%
41	Probation 1 - Low GPA	215	1.66%	1,715.0	1.55%
42	Probation add sems - Low GPA	229	1.77%	1,579.5	1.43%
4A	Probation 1 - GPA under 1.75	347	2.68%	2,732.0	2.47%
4B	Probation 2 - GPA under 1.75	200	1.55%	1,232.0	1.12%
51	Probation 1 - GPA & Progress	3	0.02%	8.5	0.01%
52	Prob add sems - GPA & Progress	4	0.03%	21.0	0.02%
5A	Prob 1 - GPA < 1.75 & Progress	13	0.10%	93.5	0.08%
5B	Prob 2 - GPA < 1.75 & Progress	4	0.03%	27.0	0.02%
<b>Total: On Probation</b>		<b>1,162</b>	<b>8.97%</b>	<b>8,439.5</b>	<b>7.63%</b>
60	Dismissed - Academic Progress	28	0.22%	165.5	0.15%
70	Dismissed - Low GPA	222	1.70%	1,296.0	1.17%
80	Dismissed - Low GPA & Progress	2	0.02%	14.0	0.01%
<b>Total: Dismissed</b>		<b>252</b>	<b>1.94%</b>	<b>1,475.5</b>	<b>1.33%</b>
<b>Total: On Probation or Dismissed</b>		<b>1,414</b>	<b>10.91%</b>	<b>9,915.0</b>	<b>8.96%</b>
Y	Not Applicable < 12 units attempted	308	2.38%	2,328.5	2.10%
[Null]	[Blank]	3,185	24.58%	31,260.0	28.25%
00	Good Standing	8,050	62.13%	67,150.5	60.69%
<b>Total: Not On Probation nor Dismissed</b>		<b>11,543</b>	<b>89.09%</b>	<b>100,739.0</b>	<b>91.04%</b>
<b>Total Students</b>		<b>12,957</b>	<b>100.00%</b>	<b>110,654.0</b>	<b>100.00%</b>

• **Spring 2011 to Fall 2014: Percentages of VC Students “On Probation” or “Dismissed”**



Ventura College  
Office of Research and Evaluation  
**Fall 2014 – VC Student Academic Standing**

• **Demographics: Fall 2014 VC Students**

<b>ETHNICITY</b>		<b>Students</b>		<b>Units</b>		<b>Average Units</b>
<b>Code</b>	<b>Description</b>	<b>Number</b>	<b>Percent</b>	<b>Number</b>	<b>Percent</b>	
A	Asian	44	3.8%	319.0	3.8%	7.3
B	Black or African American	35	3.0%	2,73.5	3.2%	7.8
H	Hispanic	782	67.3%	5,752.0	68.2%	7.4
N	American Indian/Alaskan Native	3	0.3%	27.0	0.3%	9.0
P	Pacific Islander	1	0.1%	6.0	0.1%	6.0
T	Two or More Ethnicities	40	3.4%	308.0	3.6%	7.7
W	White	249	21.4%	1,697.0	20.1%	6.8
X	Unknown	8	0.7%	57.0	0.7%	7.1
<b>Total: On Probation</b>		<b>1,162</b>	<b>100.0%</b>	<b>8,439.5</b>	<b>100.0%</b>	<b>7.3</b>
A	Asian	7	2.8%	55.0	3.7%	7.9
B	Black or African American	10	3.9%	41.0	2.8%	4.1
H	Hispanic	166	65.9%	994.0	67.3%	6.0
T	Two or More Ethnicities	5	2.0%	39.5	2.7%	7.9
W	White	61	24.2%	333.0	22.6%	5.5
X	Unknown	3	1.2%	13.0	0.9%	4.3
<b>Total: Dismissed</b>		<b>252</b>	<b>100.0%</b>	<b>1,475.5</b>	<b>100.0%</b>	<b>5.9</b>

<b>GENDER</b>		<b>Students</b>		<b>Units</b>		<b>Average Units</b>
<b>Code</b>	<b>Description</b>	<b>Number</b>	<b>Percent</b>	<b>Number</b>	<b>Percent</b>	
F	Female	577	49.7%	4,237.5	50.2%	7.3
M	Male	580	49.9%	4,164.0	49.3%	7.2
N	Unknown	5	0.4%	38.0	0.5%	7.6
<b>Total: On Probation</b>		<b>1,162</b>	<b>100.0%</b>	<b>8,439.5</b>	<b>100.0%</b>	<b>7.3</b>
F	Female	122	48.4%	779.0	52.8%	6.4
M	Male	127	50.4%	672.5	45.6%	5.3
N	Unknown	3	1.2%	24.0	1.6%	8.0
<b>Total: Dismissed</b>		<b>252</b>	<b>100.0%</b>	<b>1,475.5</b>	<b>100.0%</b>	<b>5.9</b>

<b>AGE</b>		<b>Students</b>		<b>Units</b>		<b>Average Units</b>
<b>Code</b>	<b>Description</b>	<b>Number</b>	<b>Percent</b>	<b>Number</b>	<b>Percent</b>	
A	18 years of age or younger	14	1.2%	99.0	1.2%	7.1
B	19 to 22 years of age	750	64.5%	5,751.0	68.1%	7.7
C	23 years of age or older	398	34.3%	2,589.5	30.7%	6.5
<b>Total: On Probation</b>		<b>1,162</b>	<b>100.0%</b>	<b>8,439.5</b>	<b>100.0%</b>	<b>7.3</b>
A	18 years of age or younger	0	0.0%	0.0	0.0%	---
B	19 to 22 years of age	116	46.0%	727.5	49.3%	6.3
C	23 years of age or older	136	54.0%	748.0	50.7%	5.5
<b>Total: Dismissed</b>		<b>252</b>	<b>100.0%</b>	<b>1,475.5</b>	<b>100.0%</b>	<b>5.9</b>

<b>Academic Status</b>	<b>Maximum Units by a Student</b>
On Probation	18.0 units
Dismissed	16.0 units