

III. ANNUAL ENROLLMENT TRENDS

Table of Contents

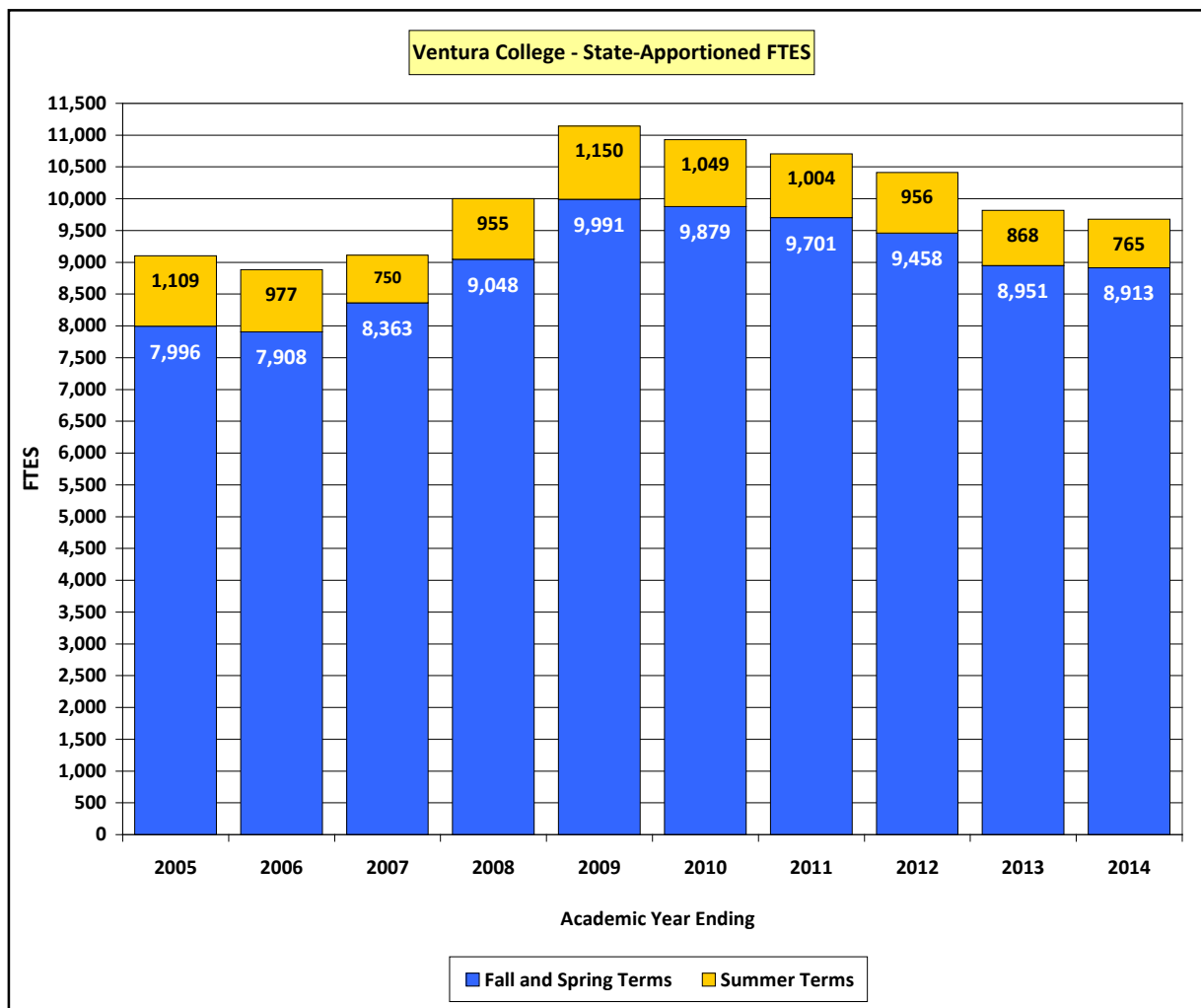
<u>ITEM</u>	<u>PAGE</u>
A. FTES Enrollments	1
B. Headcount Enrollments	2
1. Overall Headcount	
2. Gender	
3. Race/Ethnicity	
4. Financial Aid	
5. Special Student Services	
6. Hispanic Students by Gender	
7. Age Group	
C. Course Enrollments	11
1. Overall Course Enrollments	
2. Distance Education Enrollments	
3. Distance Education Outcomes	

III. ANNUAL ENROLLMENT TRENDS

A. FTES Enrollments

The FTES (Full-Time Equivalent Student) data presented on this page reflect FTES for which the VCCCD received apportionment funding from the State of California. Between 2005 and 2007, FTES generated by Ventura College was in the 9,000 range. In years 2009 through 2012, VC exceeded 10,000 FTES and became a medium-size college. In 2013 and 2014, the college served under 10,000 FTES (in each AY) while maintaining medium-size college status.

(Academic years are referenced by their ending years)



Ventura College FTES Academic Years Ending: 2005 through 2014										
Category	Academic Year Ending									
	2005	2006	2007	2008	2009	2010	2011	2012	2013	2014
Fall and Spring	7,996	7,908	8,363	9,048	9,991	9,879	9,701	9,458	8,951	8,913
Summer	1,109	977	750	955	1,150	1,049	1,004	956	868	765
Total FTES	9,105	8,885	9,113	10,003	11,141	10,928	10,705	10,414	9,819	9,678
Δ from Prev. Yr	-386	-220	+228	+890	+1,138	-213	-223	-291	-595	-141
Δ Percentage	-4.1%	-2.4%	+2.6%	+9.8%	+11.4%	-1.9%	-2.0%	-2.7%	-5.7%	-1.4%

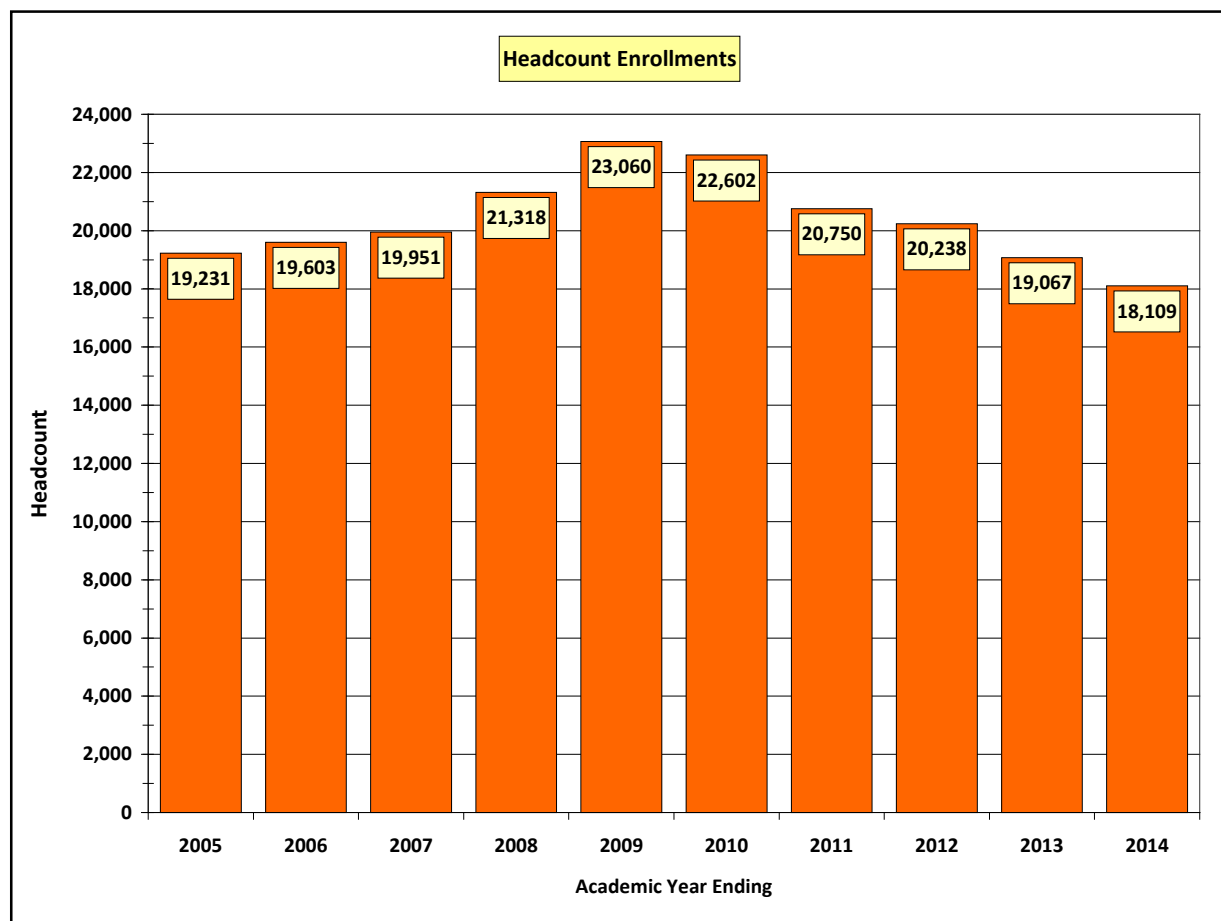
Source: VCCCD – Business and Administrative Services: CCFS-320, Annual Attendance Reports 2005 – 2014

III. ANNUAL ENROLLMENT TRENDS

B-1. Overall Headcount

Between 2005 and 2009, headcount enrollments grew progressively from 19,231 to 23,060. Since 2009, enrollments have steadily declined to **18,109** in **2014**. In future years, the college expects headcounts to show moderate gains through increased course offerings made possible by improved state funding.

(Academic years are referenced by their ending years)



Ventura College Headcount Enrollments Academic Years: 2004–2005 through 2013–2014										
Category	Academic Year Ending									
	2005	2006	2007	2008	2009	2010	2011	2012	2013	2014
Headcount	19,231	19,603	19,951	21,318	23,060	22,602	20,750	20,238	19,067	18,109
Δ from Prev. Yr	-700	+372	+348	+1,367	1,742	-451	-1,852	-512	-1,171	-958
Δ Percentage	-3.5%	+1.9%	+1.8%	+6.8%	+8.2%	-1.9%	-8.2%	-2.5%	-5.8%	-5.0%

Source: California Community Colleges Chancellor's Office: Data Mart, Student Demographics – Annual, Query by College/Statewide

Web Link: http://datamart.cccco.edu/Students/Student_Term_Annual_Count.aspx

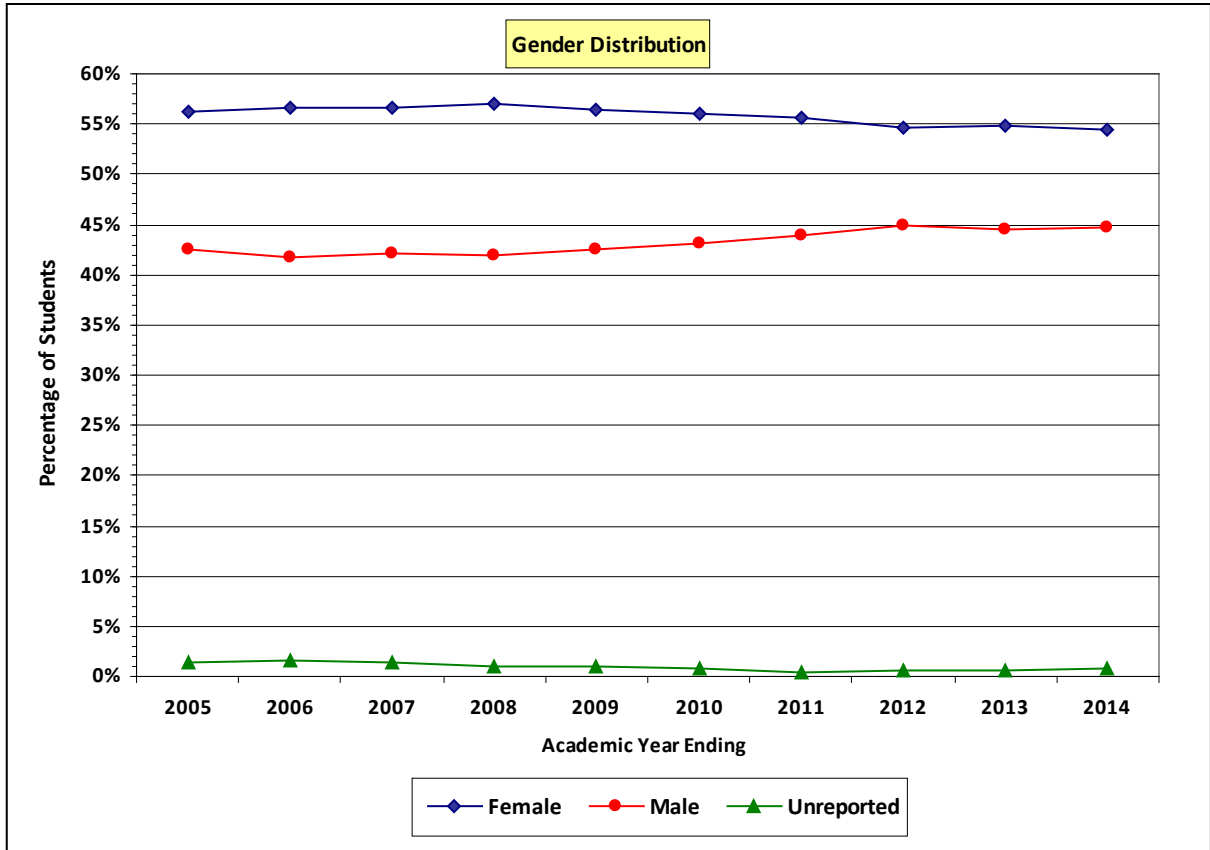
III. ANNUAL ENROLLMENT TRENDS

B-2. Gender

Over the past decade, the proportion of female students at Ventura College has fluctuated between 57% (2008) and **54%** (2014). Male representation at VC has increased from 42% in 2006 to **45%** in 2014.

In **2014**, the statewide proportions were **53%** female, **46%** male, and **1%** unreported.

(Academic years are referenced by their ending years)



Ventura College Students by Gender Academic Years: 2004–2005 through 2013–2014										
Gender	Academic Year Ending									
	2005	2006	2007	2008	2009	2010	2011	2012	2013	2014
Female	10,804	11,104	11,290	12,140	13,031	12,655	11,547	11,062	10,450	9,861
Male	8,180	8,195	8,402	8,958	9,813	9,754	9,133	9,079	8,498	8,108
Unreported	247	304	259	220	216	193	70	97	119	140
Total Count	19,231	19,603	19,951	21,318	23,060	22,602	20,750	20,238	19,067	18,109
Gender	Academic Year Ending									
	2005	2006	2007	2008	2009	2010	2011	2012	2013	2014
Female	56.2%	56.6%	56.6%	57.0%	56.5%	56.0%	55.7%	54.6%	54.8%	54.4%
Male	42.5%	41.8%	42.1%	42.0%	42.6%	43.2%	44.0%	44.9%	44.6%	44.8%
Unreported	1.3%	1.6%	1.3%	1.0%	0.9%	0.8%	0.3%	0.5%	0.6%	0.8%
Total Percent	100.0%	100.0%	100.0%	100.0%	100.0%	100.0%	100.0%	100.0%	100.0%	100.0%

Source: California Community Colleges Chancellor's Office: Data Mart, Student Demographics – Annual, Query by College/Statewide

Web Link: http://datamart.cccco.edu/Students/Student_Term_Annual_Count.aspx

III. ANNUAL ENROLLMENT TRENDS

B-3. Race/Ethnicity – Data Tables

In 2009, the number of Hispanic/Latino students at Ventura College surpassed the number of White students, resulting in Hispanics becoming the largest racial/ethnic group at the college. In **2014**, the proportion of Hispanic students at VC was **54%** compared to **33%** for White students. As of the 2010 U.S. Census, the percentage of Hispanics residing in the college’s **service area** was **43%**, which is **11** percentage points **lower** than Hispanic student enrollment at Ventura College in 2014.

Population percentages for Ventura College’s service area and for all of Ventura County are presented in the data table below. The Census Bureau reports population data by two characteristics: **Ethnicity** (Hispanic/Latino **or** Non-Hispanic/Non-Latino) and **Race** (the percentages by city or area total 100.0%).

(Academic years are referenced by their ending years)

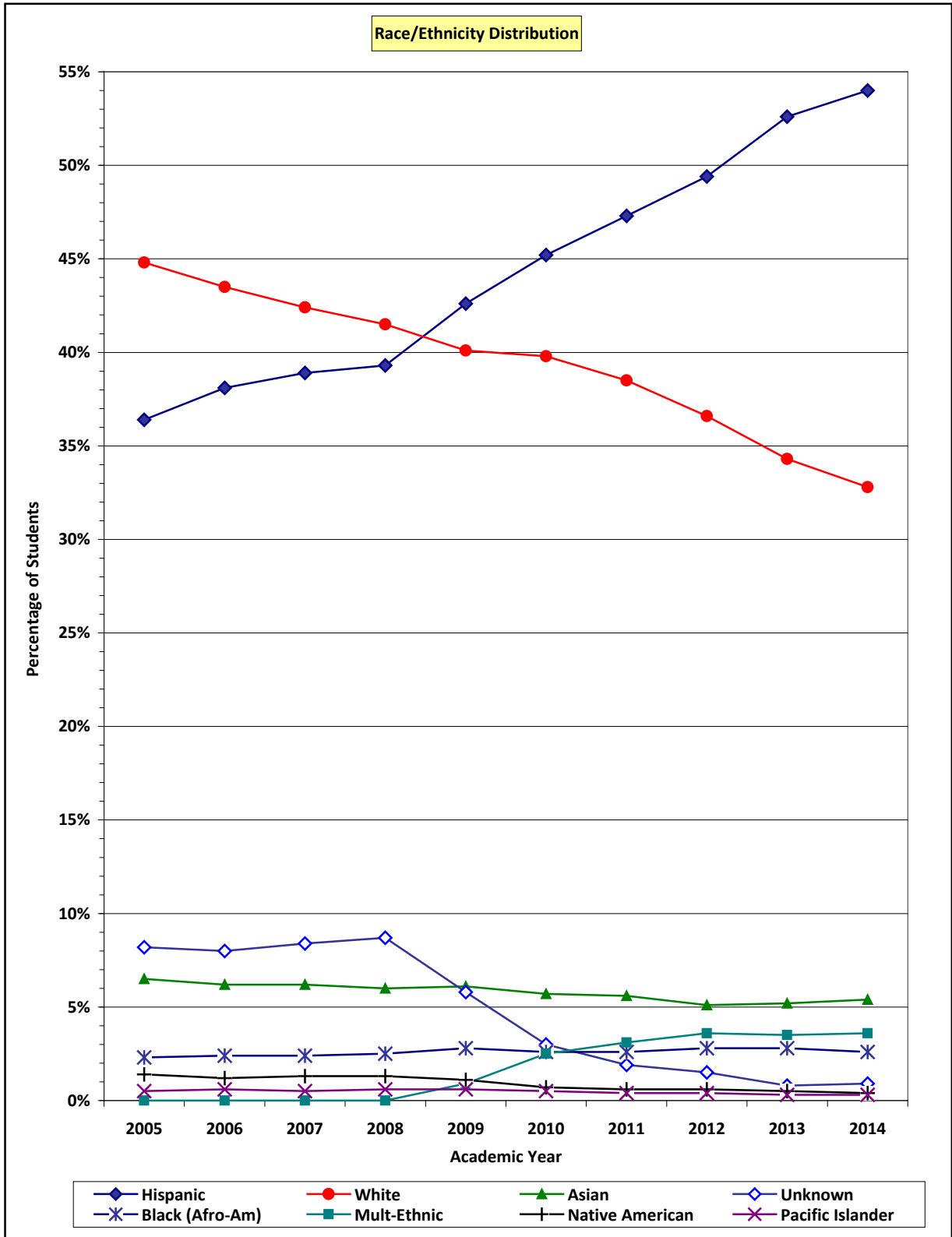
U. S. Census 2010										
City or Area	Total Pop.	Ethnicity		Population by Race						
		Latino	Not Lat.	Asian	Black	Nat Am	Pac Isl	2/More	Other	White
Fillmore	19,488	74.1%	25.9%	0.9%	0.5%	1.4%	0.1%	5.3%	34.7%	57.1%
Santa Paula	32,060	77.7%	22.3%	0.7%	0.5%	1.6%	0.1%	3.8%	29.8%	63.5%
Ojai Valley	27,784	20.9%	79.1%	1.6%	0.6%	1.0%	0.0%	3.2%	8.2%	85.4%
Ventura	111,889	32.6%	67.4%	3.3%	1.6%	1.2%	0.2%	5.2%	12.2%	76.3%
VC Area	191,221	42.7%	57.3%	2.4%	1.2%	1.3%	0.1%	4.7%	16.8%	73.5%
Ven. Cnty	823,318	40.3%	59.7%	6.7%	1.9%	1.0%	0.2%	4.5%	17.0%	68.7%

Ventura College Students by Race/Ethnicity Academic Years: 2004–2005 through 2013–2014										
Race or Ethnicity	Academic Year Ending									
	2005	2006	2007	2008	2009	2010	2011	2012	2013	2014
Asian	1,246	1,222	1,229	1,293	1,405	1,279	1,155	1,026	990	971
Black (Afro-Am)	449	463	480	537	651	587	532	562	534	476
Hispanic	6,993	7,467	7,767	8,388	9,834	10,211	9,810	10,002	10,019	9,784
Native Amer.	263	240	251	273	254	155	135	115	96	73
Pacific Islander	92	109	107	125	130	110	92	85	63	51
Multi-Ethnic	0	0	0	0	214	576	652	739	666	654
White	8,615	8,526	8,450	8,841	9,241	9,003	7,979	7,408	6,540	5,943
Unknown	1,573	1,576	1,667	1,861	1,331	681	395	301	159	157
Total Count	19,231	19,603	19,951	21,318	23,060	22,602	20,750	20,238	19,067	18,109
Race or Ethnicity	Academic Year Ending									
	2005	2006	2007	2008	2009	2010	2011	2012	2013	2014
Asian	6.5%	6.2%	6.2%	6.0%	6.1%	5.7%	5.6%	5.1%	5.2%	5.4%
Black (Afro-Am)	2.3%	2.4%	2.4%	2.5%	2.8%	2.6%	2.6%	2.8%	2.8%	2.6%
Hispanic	36.4%	38.1%	38.9%	39.3%	42.6%	45.2%	47.3%	49.4%	52.6%	54.0%
Native Amer.	1.4%	1.2%	1.3%	1.3%	1.1%	0.7%	0.6%	0.6%	0.5%	0.4%
Pacific Islander	0.5%	0.6%	0.5%	0.6%	0.6%	0.5%	0.4%	0.4%	0.3%	0.3%
Multi-Ethnic	0.0%	0.0%	0.0%	0.0%	0.9%	2.5%	3.1%	3.6%	3.5%	3.6%
White	44.8%	43.5%	42.4%	41.5%	40.1%	39.8%	38.5%	36.6%	34.3%	32.8%
Unknown	8.2%	8.0%	8.4%	8.7%	5.8%	3.0%	1.9%	1.5%	0.8%	0.9%
Total Percent	100.0%	100.0%	100.0%	100.0%	100.0%	100.0%	100.0%	100.0%	100.0%	100.0%

Source: California Community Colleges Chancellor’s Office: Data Mart, Student Demographics – Annual, Query by College/Statewide
 Web Link: http://datamart.cccco.edu/Students/Student_Term_Annual_Count.aspx

III. ANNUAL ENROLLMENT TRENDS

B-3. Race/Ethnicity – Chart

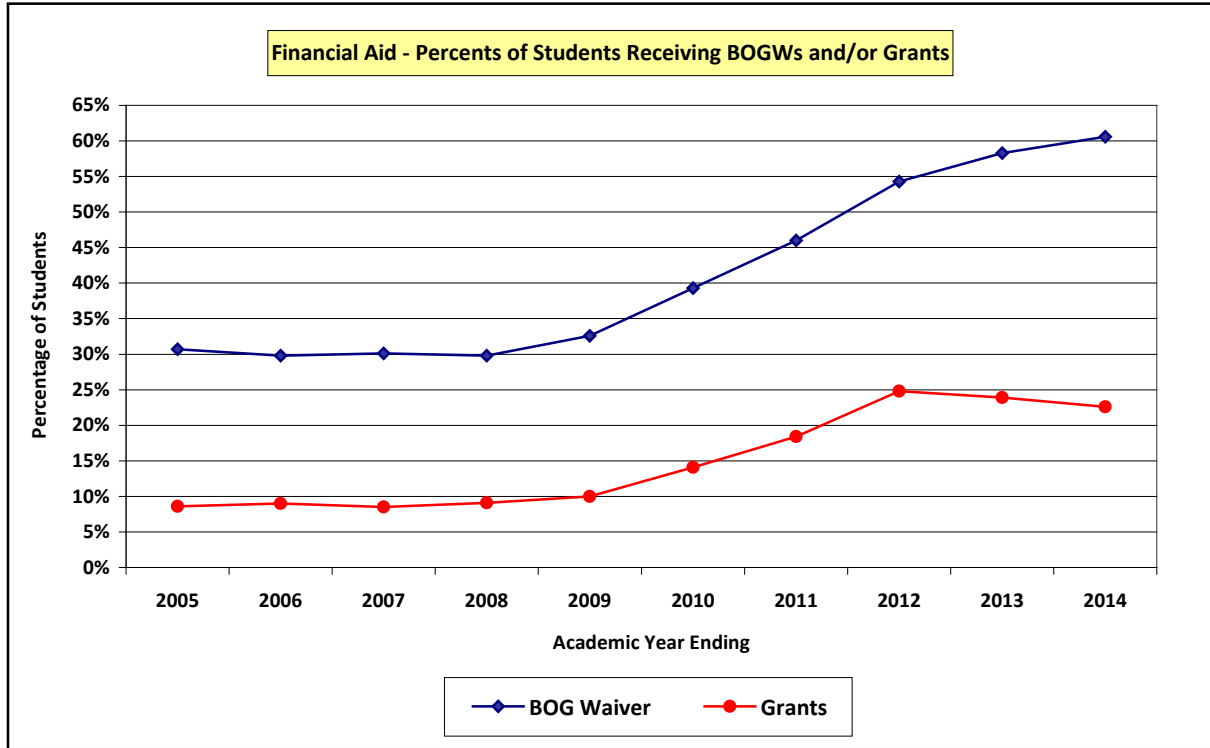


III. ANNUAL ENROLLMENT TRENDS

B-4. Financial Aid

The percentage of VC students receiving **financial aid** began to increase after **2009**, when it was **33%**. In **2014**, **62%** of VC students received some type of financial aid.

(Academic years are referenced by their ending years)



Ventura College – Hispanic Students Academic Years: 2004–2005 through 2013–2014										
Financial Aid Category	Academic Year Ending									
	2005	2006	2007	2008	2009	2010	2011	2012	2013	2014
BOG Waiver	5,906	5,849	6,010	6,343	7,515	8,872	9,545	10,998	11,120	10,983
Grants	1,646	1,760	1,698	1,933	2,307	3,188	3,826	5,027	4,554	4,096
Loans	362	420	392	457	547	587	566	877	785	488
Scholarship	120	126	94	97	80	99	51	0	0	0
Work Study	10	105	88	88	85	144	87	135	137	76
Undup. Stdnts	5,967	5,920	6,079	6,450	7,658	9,094	9,826	11,292	11,373	11,258
Financial Aid Category	Academic Year Ending									
	2005	2006	2007	2008	2009	2010	2011	2012	2013	2014
BOG Waiver	30.7%	29.8%	30.1%	29.8%	32.6%	39.3%	46.0%	54.3%	58.3%	60.6%
Grants	8.6%	9.0%	8.5%	9.1%	10.0%	14.1%	18.4%	24.8%	23.9%	22.6%
Loans	1.9%	2.1%	2.0%	2.1%	2.4%	2.6%	2.7%	4.3%	4.1%	2.7%
Scholarship	0.6%	0.6%	0.5%	0.5%	0.3%	0.4%	0.2%	0.0%	0.0%	0.0%
Work Study	0.1%	0.5%	0.4%	0.4%	0.4%	0.6%	0.4%	0.7%	0.7%	0.4%
Undup. Prcnt	31.0%	30.2%	30.5%	30.3%	33.2%	40.2%	47.4%	55.8%	59.6%	62.2%
Total Students	19,231	19,603	19,951	21,318	23,060	22,602	20,750	20,238	19,067	18,109

Source: California Community Colleges Chancellor's Office: Data Mart – Financial Aid Summary Report

Web Link: http://datamart.cccco.edu/Services/FinAid_Summary.aspx

III. ANNUAL ENROLLMENT TRENDS

B-5. Special Student Services Programs

Ventura College provides services to students eligible to participate in the following programs.

Category	Program Description
EAC	Educational Assistance Center or DSPS (Disabled Students Program and Services)
EOPS	Extended Opportunity Program and Services
CalWORKs	California Work Opportunity and Responsibility to Kids
Foster Youth	Foster and Kinship Care
MESA	Mathematics, Engineering, Science Achievement
Veterans	Veterans Center

The table below provides academic year or fall term enrollments for special student services programs.

Ventura College										
Academic Years: 2004-2005 to 2013-2014										
Special Student Services Programs										
EAC (DSPS)	Academic Years Ending									
	2005	2006	2007	2008	2009	2010	2011	2012	2013	2014
Participants	979	1,026	1,014	1,029	1,150	1,115	1,112	1,141	1,108	1,141
% All Students	5.1%	5.2%	5.1%	4.8%	5.0%	4.9%	5.4%	5.6%	5.8%	6.3%
EOPS	Academic Years Ending									
	2005	2006	2007	2008	2009	2010	2011	2012	2013	2014
Participants	774	775	744	800	827	812	618	670	606	640
% All Students	4.0%	4.0%	3.7%	3.8%	3.6%	3.6%	3.0%	3.3%	3.2%	3.5%
CalWORKS	Academic Years Ending									
	2005	2006	2007	2008	2009	2010	2011	2012	2013	2014
Participants	---	---	---	343	335	348	241	232	187	186
% All Students	---	---	---	1.6%	1.5%	1.5%	1.2%	1.1%	1.0%	1.0%
Foster Youth	Fall Term									
	2005	2006	2007	2008	2009	2010	2011	2012	2013	2014
Participants								38	108	145
% All Students								0.3%	0.8%	1.1%
MESA	Academic Years Ending									
	2005	2006	2007	2008	2009	2010	2011	2012	2013	2014
Participants								59	64	72
% All Students								0.5%	0.5%	0.2%
Veterans	Fall Term									
	2005	2006	2007	2008	2009	2010	2011	2012	2013	2014
Participants								214	254	243
% All Students								1.6%	2.0%	1.9%

Source: California Community Colleges Chancellor's Office: Student Services Automated Reporting for the CCCs (SSARCC)
EAC, EOPS, and CalWORKs

California Community Colleges Chancellor's Office: Datamart – Special Population/Group Student Count
Weblink: http://datamart.cccco.edu/Services/Special_Pop_Count.aspx
Foster Youth, MESA, and Veterans

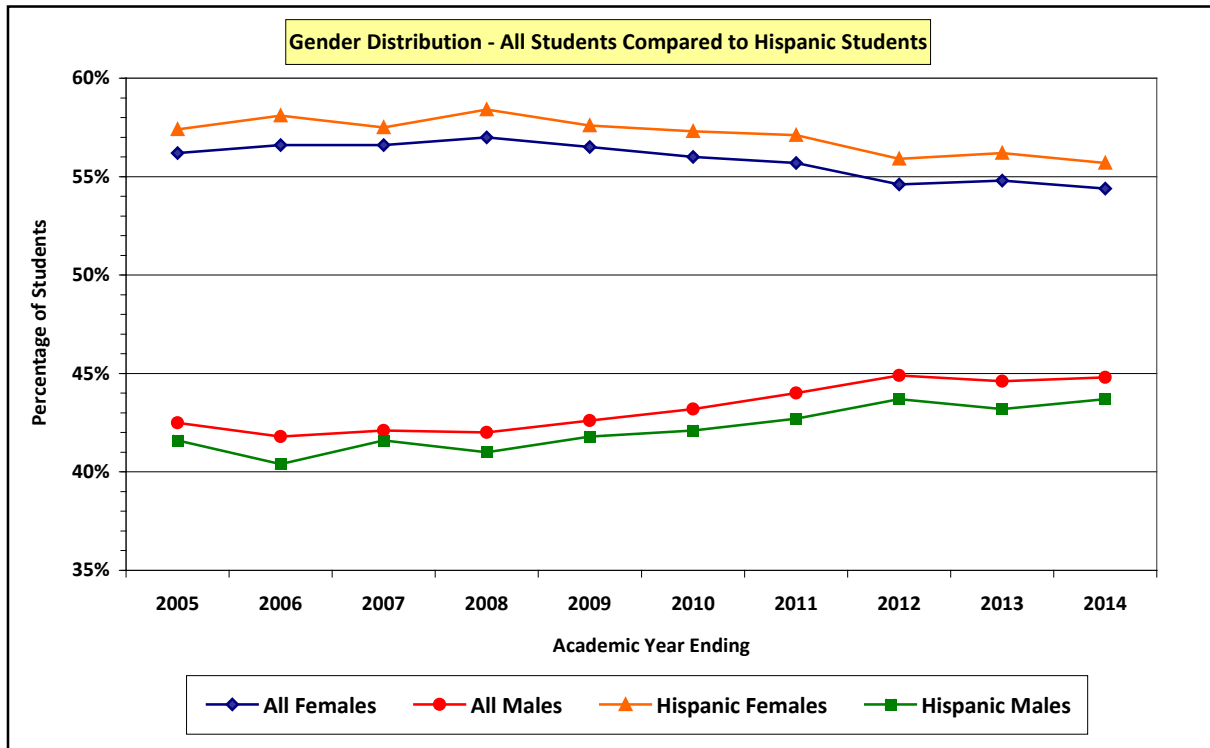
III. ANNUAL ENROLLMENT TRENDS

B-6. Hispanic Students by Gender

Over the last decade, the percentage distribution of Hispanic students by gender has been similar to the percentage gender distribution for all students at Ventura College. Generally, the percentage of Hispanic students who were female was **one** percentage point **higher** than it was for the percentage of the entire student body that was female. The percentage of Hispanic students who were male was **one** percentage point **lower** than it was for the percentage of the entire student body that was male.

In **2014**, **55.7%** of Hispanic students were females compared to **54.5%** for the entire student body; the percentage of Hispanic students that were males was **43.7%** versus **44.8%** for all students.

(Academic years are referenced by their ending years)



Ventura College – Hispanic Students										
Academic Years: 2004–2005 through 2013–2014										
Hispanics Gender	Academic Year Ending									
	2005	2006	2007	2008	2009	2010	2011	2012	2013	2014
Female	4,013	4,340	4,469	4,903	5,663	5,852	5,604	5,593	5,628	5,451
Male	2,910	3,015	3,229	3,437	4,109	4,294	4,185	4,368	4,329	4,272
Unreported	70	112	69	48	62	65	21	41	62	61
Total Count	6,993	7,467	7,767	8,388	9,834	10,211	9,810	10,002	10,019	9,784
Hispanics Gender	Academic Year Ending									
	2005	2006	2007	2008	2009	2010	2011	2012	2013	2014
Female	57.4%	58.1%	57.5%	58.4%	57.6%	57.3%	57.1%	55.9%	56.2%	55.7%
Male	41.6%	40.4%	41.6%	41.0%	41.8%	42.1%	42.7%	43.7%	43.2%	43.7%
Unreported	1.0%	1.5%	0.9%	0.6%	0.6%	0.6%	0.2%	0.4%	0.6%	0.6%
Total Percent	100.0%	100.0%	100.0%	100.0%	100.0%	100.0%	100.0%	100.0%	100.0%	100.0%

Source: California Community Colleges Chancellor's Office: Data Mart, Student Demographics – Annual, Query by College/Statewide
 Web Link: https://misweb.cccco.edu/mis/onlinestat/studdemo_annual_college.cfm

III. ANNUAL ENROLLMENT TRENDS

B-7. Age Group – Data Table

Over the past decade at VC, the percentage distribution of students by Age Group has shown an increase in the younger student groups and a decrease in older student groups (see the data table on the bottom of this page and the chart on next the page). In the “20 to 24” group, there is a 9 percentage point increase from 2005 to 2014.

In **2014**, the percentage of Hispanics students at VC in the “19 or younger” age group was 35% compared to 28% for All Other Students (see the table below). Over **74%** of **Hispanic** students in **2014** were **less than 25** years of age versus **61%** for All Other students.

(Academic years are referenced by their ending years)

2014 – Hispanic Students Compared to All Other Students					
Age Group (In Years)	Hispanic Students		All Other Students		Diff. in Percents (a) minus (b)
	Number	Percentage (a)	Number	Percentage (b)	
19 or younger	3,447	35.2%	2,363	28.4%	+ 6.8
20 to 24	3,821	39.1%	2,744	33.0%	+ 6.1
25 to 29	1,112	11.4%	1,132	13.6%	- 2.2
30 to 39	873	8.9%	943	11.3%	- 2.4
40 to 49	374	3.8%	581	7.0%	- 3.2
50 or older	157	1.6%	560	6.7%	- 5.1
Unreported	0	0.0%	2	0.0%	0.0
Totals	9,784	100.0%	8,325	100.0%	0.0

It is expected that the trend toward increased enrollments of younger students will continue, primarily due to the college’s focus on its core mission: providing transfer, degree and certificate programs.

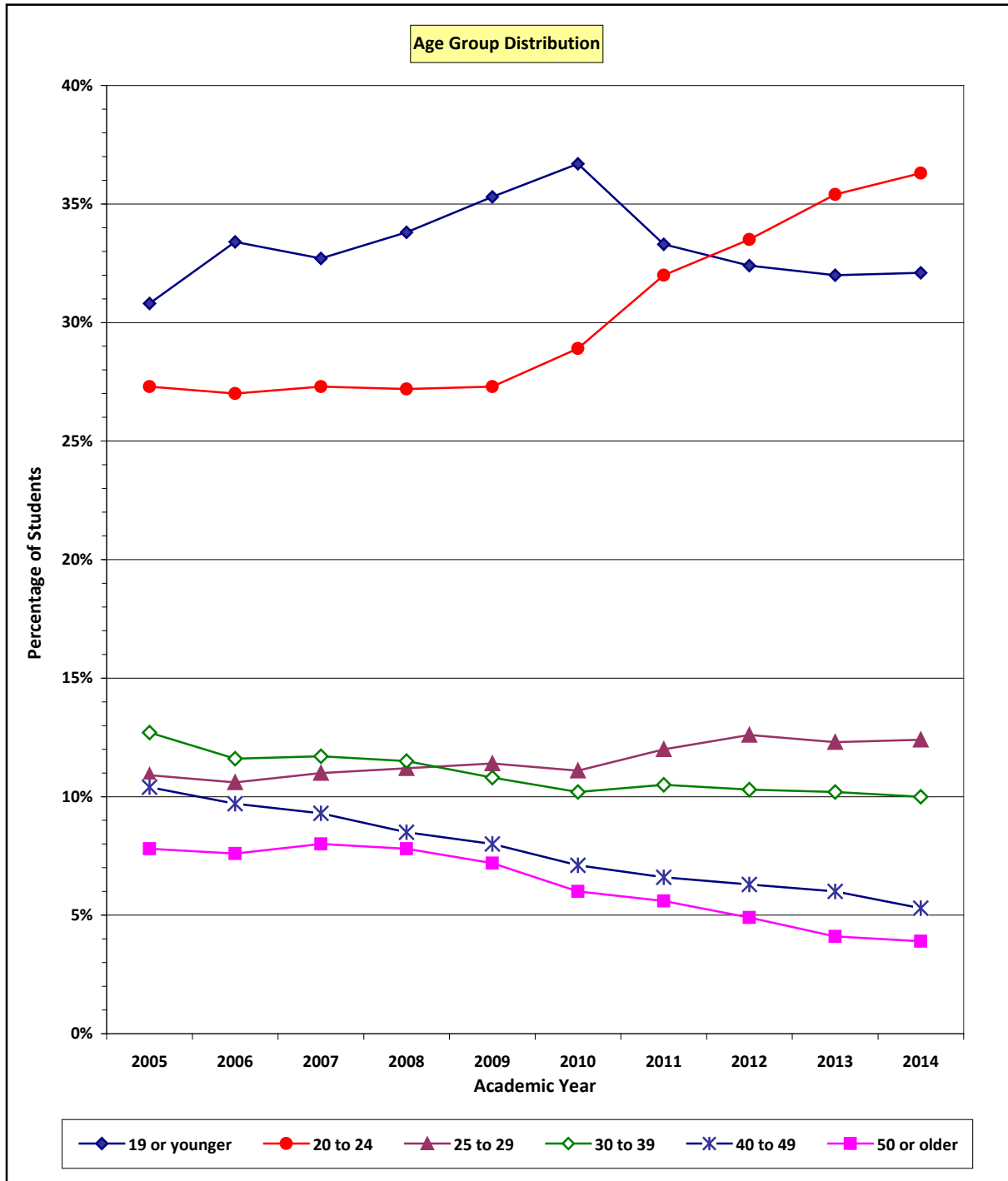
Ventura College Students by Age Group Academic Years: 2004–2005 through 2013–2014										
Age Group (In Years)	Academic Year Ending									
	2005	2006	2007	2008	2009	2010	2011	2012	2013	2014
19 or younger	5,932	6,556	6,521	7,212	8,141	8,296	6,917	6,554	6,107	5,810
20 to 24	5,243	5,299	5,455	5,791	6,306	6,532	6,639	6,771	6,746	6,565
25 to 29	2,098	2,074	2,192	2,385	2,627	2,502	2,490	2,541	2,351	2,244
30 to 39	2,450	2,281	2,331	2,461	2,483	2,304	2,181	2,085	1,941	1,816
40 to 49	2,004	1,903	1,852	1,811	1,841	1,596	1,366	1,286	1,139	955
50 or older	1,501	1,486	1,592	1,653	1,653	1,367	1,157	999	779	717
Unreported	3	4	8	5	9	5	0	2	4	2
Total Count	19,231	19,603	19,951	21,318	23,060	22,602	20,750	20,238	19,067	18,109
Age Group (In Years)	Academic Year Ending									
	2005	2006	2007	2008	2009	2010	2011	2012	2013	2014
19 or younger	30.8%	33.4%	32.7%	33.8%	35.3%	36.7%	33.3%	32.4%	32.0%	32.1%
20 to 24	27.3%	27.0%	27.3%	27.2%	27.3%	28.9%	32.0%	33.5%	35.4%	36.3%
25 to 29	10.9%	10.6%	11.0%	11.2%	11.4%	11.1%	12.0%	12.6%	12.3%	12.4%
30 to 39	12.7%	11.6%	11.7%	11.5%	10.8%	10.2%	10.5%	10.3%	10.2%	10.0%
40 to 49	10.4%	9.7%	9.3%	8.5%	8.0%	7.1%	6.6%	6.3%	6.0%	5.3%
50 or older	7.8%	7.6%	8.0%	7.8%	7.2%	6.0%	5.6%	4.9%	4.1%	3.9%
Unreported	0.0%	0.0%	0.0%	0.0%	0.0%	0.0%	0%	0.0%	0.0%	0.0%
Total Percent	100.0%	100.0%	100.0%	100.0%	100.0%	100.0%	100.0%	100.0%	100.0%	100.0%

Source: California Community Colleges Chancellor’s Office: Data Mart, Student Demographics – Annual, Query by College/Statewide
 Web Link: https://misweb.cccco.edu/mis/onlinestat/studdemo_annual_college.cfm (2005 - 2010)
 Web Link: http://datamart.cccco.edu/Students/Student_Term_Annual_Count.aspx (2011 - 2014)

III. ANNUAL ENROLLMENT TRENDS

B-7. Age Group – Chart

Over the last decade, the number and percentage of **younger** students (under 25 years of age) at Ventura College has grown by **10** percentage points. During the same period, the number and percentage of **older** students at the college has been declining. The chart below provides a visual depiction of these trends.

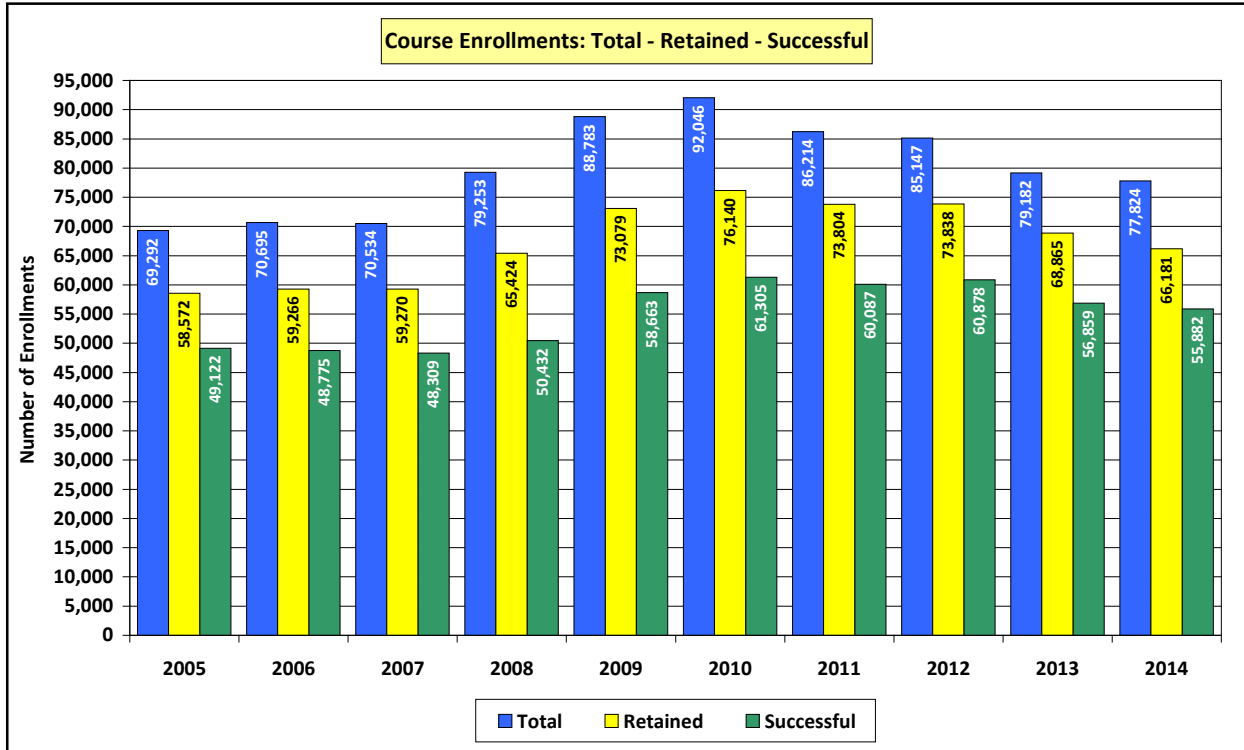


III. ANNUAL ENROLLMENT TRENDS

C-1. Overall Course Enrollments

Over the past five years, credit enrollments at VC have declined from 92,046 in 2010 to 77,824 in 2014. In **2014**, the overall annual **retention rate** was **85%**; the **success rate** was **72%**.

(Academic years are referenced by their ending years)



Retention and Success Rates

The denominator in retention and success rate computations is the number of course enrollments with grade notations of A, B, C, D, F, CR, NC, I*, P, NP, DR, and W.

Retention is defined as a grade notation of A, B, C, D, F, CR, NC, I*, P, or NP.

Success is defined as a grade notation of A, B, C, CR, or P.

Ventura College – Credit Course Enrollments (Seatcounts)										
Academic Years: 2004–2005 through 2013–2014										
Enrollments / Outcomes	Academic Year Ending									
	2005	2006	2007	2008	2009	2010	2011	2012	2013	2014
Summer	7,127	8,556	8,946	10,363	12,241	13,176	9,566	9,202	7,438	7,373
Fall	31,481	31,156	31,705	35,029	38,572	39,678	37,456	37,484	35,869	35,677
Spring	30,684	30,983	29,883	33,861	37,970	39,192	39,165	38,461	35,875	34,774
Tot. Seatcount	69,292	70,695	70,534	79,253	88,783	92,046	86,214	85,147	79,182	77,824
Retained	58,572	59,266	59,270	65,424	73,079	76,140	73,804	73,838	68,865	66,181
Retention Rate	84.5%	83.8%	84.0%	82.6%	82.3%	82.7%	85.6%	86.7%	87.0%	85.0%
Succeeded	49,122	48,775	48,309	50,432	58,663	61,305	60,087	60,878	56,859	55,882
Success Rate	70.9%	69.0%	68.5%	63.6%	66.1%	66.6%	69.7%	71.5%	71.8%	71.8%

Source: California Community Colleges Chancellor's Office: Data Mart, Program Retention/Success Rates – By Distance Education Status; Query by College/Statewide (AYs 2004-2005 to 2009-2010)

Web Link: https://misweb.cccco.edu/mis/onlinestat/ret_sucs_de.cfm

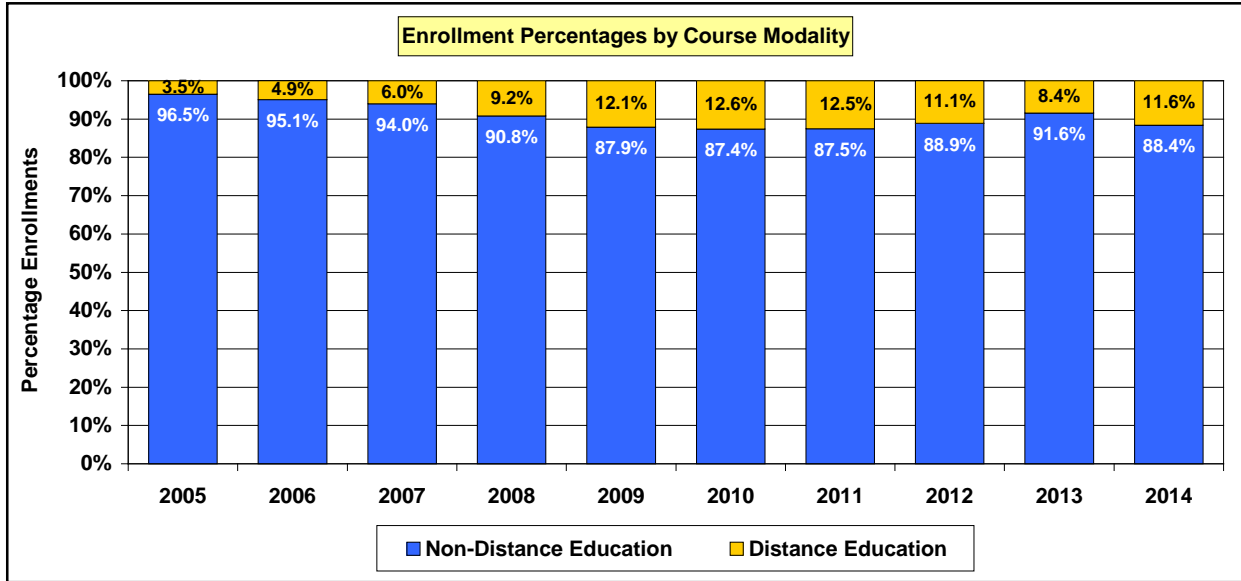
Ventura County Community College District – Banner Data System (AYs 2010-2011 to 2013-2014)

III. ANNUAL ENROLLMENT TRENDS

C-2. Distance Education Enrollments

During the decade, enrollments in distance education (D/E) classes at VC grew from 2,429 in 2005 to 11,568 in 2010. After 2010, D/E enrollments declined, as did total college enrollments. In **2014**, total college enrollments were **77,824**, of which **9,032 (11.6%)** were in distance education classes.

(Academic years are referenced by their ending years)



Ventura College										
Distance Education: Credit Class Enrollments (Seatcounts)										
Term	Academic Year Ending									
	2005	2006	2007	2008	2009	2010	2011	2012	2013	2014
Summer	291	364	662	1,378	2,198	2,683	2,100	1,604	1,147	1,450
Fall	1,011	1,430	1,736	2,778	3,996	4,477	4,264	3,711	2,504	3,635
Spring	1,127	1,640	1,840	3,151	4,531	4,408	4,473	4,169	3,020	3,947
D/E Seats	2,429	3,434	4,238	7,307	10,725	11,568	10,837	9,484	6,671	9,032
Total Seats	69,292	70,695	70,534	79,253	88,783	92,046	86,214	85,147	79,182	77,824
D/E Percent	3.5%	4.9%	6.0%	9.2%	12.1%	12.6%	12.5%	11.1%	8.4%	11.6%

Non-Distance Education Classes: Credit Enrollments (Seatcounts)										
Term	Academic Year Ending									
	2005	2006	2007	2008	2009	2010	2011	2012	2013	2014
Summer	6,836	8,192	8,284	8,985	10,043	10,493	7,475	7,598	6,291	5,923
Fall	30,470	29,726	29,969	32,251	34,576	35,201	33,192	33,773	33,365	32,042
Spring	29,557	29,343	28,043	30,710	33,439	34,784	34,710	34,292	32,855	30,827
Non-D/E Seats	66,863	67,261	66,296	71,946	78,058	80,478	75,377	75,663	72,511	68,792
Total Seats	69,292	70,695	70,534	79,253	88,783	92,046	86,214	85,147	79,182	77,824
Non-D/E Prcnt	96.5%	95.1%	94.0%	90.8%	87.9%	87.4%	87.5%	88.9%	91.6%	88.4%

Source: California Community Colleges Chancellor's Office: Data Mart, Program Retention/Success Rates – By Distance Education Status; Query by College/Statewide (AYs 2004-2005 to 2009-2010)

Web Link: https://misweb.cccco.edu/mis/onlinestat/ret_succs_de.cfm

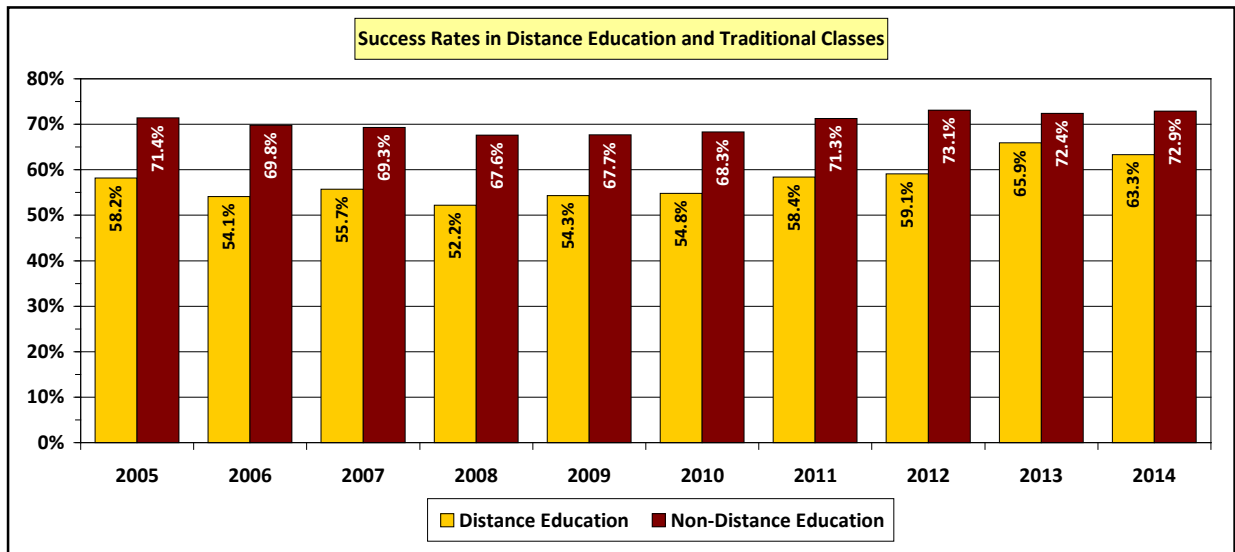
Ventura County Community College District – Banner Data System (AYs 2010-2011 to 2013-2014)

III. ANNUAL ENROLLMENT TRENDS

C-3. Distance Education Outcomes

Success rates in D/E courses at VC average about **10** percentage points **lower** than in **all** non-D/E courses. Through a new (2010) Title V Cooperative Grant, Ventura College is creating initiatives to address the lower success rates in D/E courses. Summer Institutes (as part of the grant’s Professional Development component) have been conducted to provide instructors with the latest strategies and pedagogies for increasing success rates in both D/E and non-D/E classes. Additionally, a distance education orientation has been created to assist new D/E students familiarize themselves with the computer technology, software, and procedures associated with classes offered via a distance education modality.

Each semester, the Office of Research and Evaluation prepares a detailed report on student outcomes in all D/E classes. These reports are available on the Institutional Research webpage.



Ventura College										
Distance Education: Credit Class Enrollments (Seatcounts)										
Enrollments / Outcomes	Academic Year Ending									
	2005	2006	2007	2008	2009	2010	2011	2012	2013	2014
D/E Seats	2,429	3,434	4,238	7,307	10,725	11,568	10,837	9,484	6,671	9,032
Retained	1,801	2,413	3,086	5,315	8,077	8,766	8,714	7,619	5,568	7,085
Retain Rate	74.1%	70.3%	72.8%	72.7%	75.3%	75.8%	80.4%	80.3%	83.5%	78.4%
Succeeded	1,414	1,857	2,359	3,814	5,829	6,334	6,326	5,601	4,393	5,713
Success Rate	58.2%	54.1%	55.7%	52.2%	54.3%	54.8%	58.4%	59.1%	65.9%	63.3%
Non-Distance Education: Credit Enrollments (Seatcounts)										
Enrollments / Outcomes	Academic Year Ending									
	2005	2006	2007	2008	2009	2010	2011	2012	2013	2014
Non-D/E Seats	66,863	67,261	66,296	71,946	78,058	80,478	75,377	75,663	72,511	68,792
Retained	56,771	56,853	56,184	60,109	65,002	67,374	65,090	66,219	63,297	59,096
Retain Rate	84.9%	84.5%	84.7%	83.5%	83.3%	83.7%	86.4%	87.5%	87.3%	85.9%
Succeeded	47,708	46,918	45,950	48,618	52,834	54,971	53,761	55,277	52,466	50,169
Success Rate	71.4%	69.8%	69.3%	67.6%	67.7%	68.3%	71.3%	73.1%	72.4%	72.9%

Source: California Community Colleges Chancellor's Office: Data Mart, Program Retention/Success Rates – By Distance Education Status; Query by College/Statewide (AYs 2004-2005 to 2009-2010)

Web Link: https://misweb.cccco.edu/mis/onlinestat/ret_sucs_de.cfm

Ventura County Community College District – Banner Data System (AYs 2010-2011 to 2013-2014)