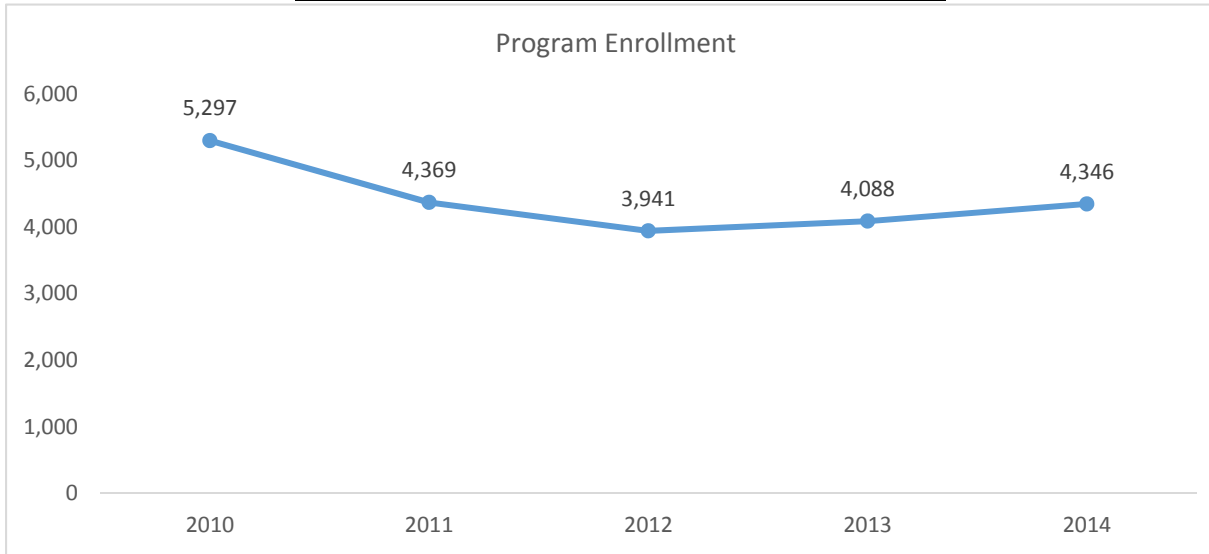
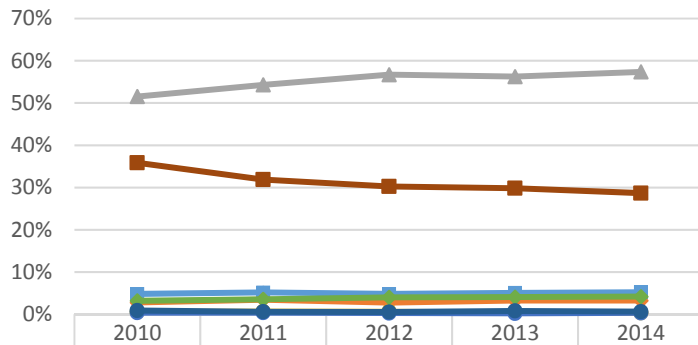


2015-2016 Program Review Datasheet Psychology

Section A - Enrollment and Student Demographics

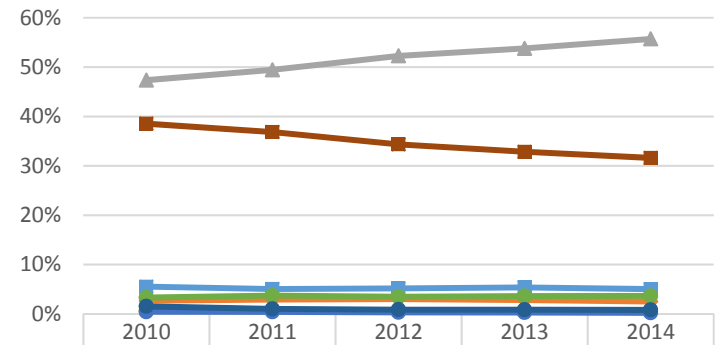


Student Ethnicity - Psychology



	2010	2011	2012	2013	2014
Asian	4.8%	5.2%	4.8%	5.1%	5.2%
Black	2.8%	3.5%	2.8%	3.3%	3.2%
Hispanic	51.5%	54.3%	56.7%	56.3%	57.4%
Native Amer	0.5%	0.6%	0.6%	0.5%	0.3%
Pac Island	0.4%	0.4%	0.3%	0.2%	0.3%
Two or More	3.2%	3.5%	4.0%	4.1%	4.2%
Unknown	0.9%	0.6%	0.5%	0.8%	0.6%
White	35.9%	31.9%	30.3%	29.9%	28.7%

Student Ethnicity - Ventura College

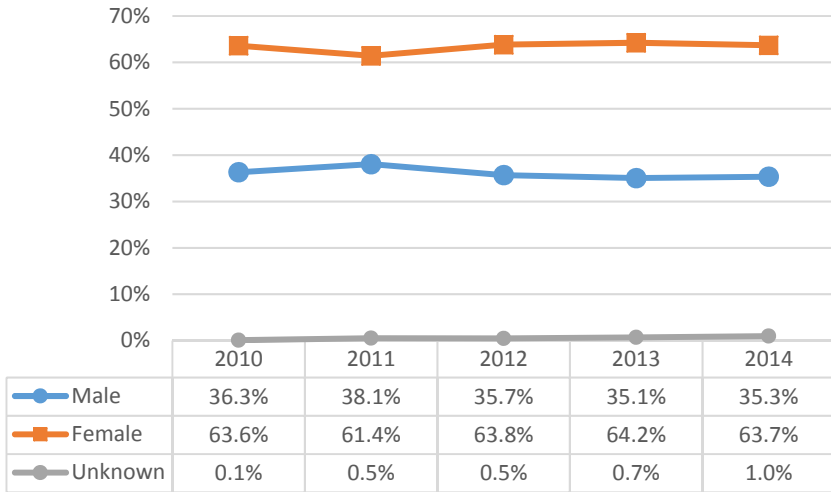


	2010	2011	2012	2013	2014
Asian	5.5%	5.1%	5.2%	5.4%	5.0%
Black	2.7%	2.9%	3.0%	2.8%	2.5%
Hispanic	47.4%	49.4%	52.3%	53.8%	55.7%
Native Amer	0.6%	0.6%	0.5%	0.4%	0.4%
Pac Island	0.4%	0.4%	0.3%	0.3%	0.2%
Two or More	3.3%	3.7%	3.5%	3.6%	3.6%
Unknown	1.5%	1.0%	0.9%	0.9%	0.8%
White	38.5%	36.8%	34.4%	32.8%	31.6%

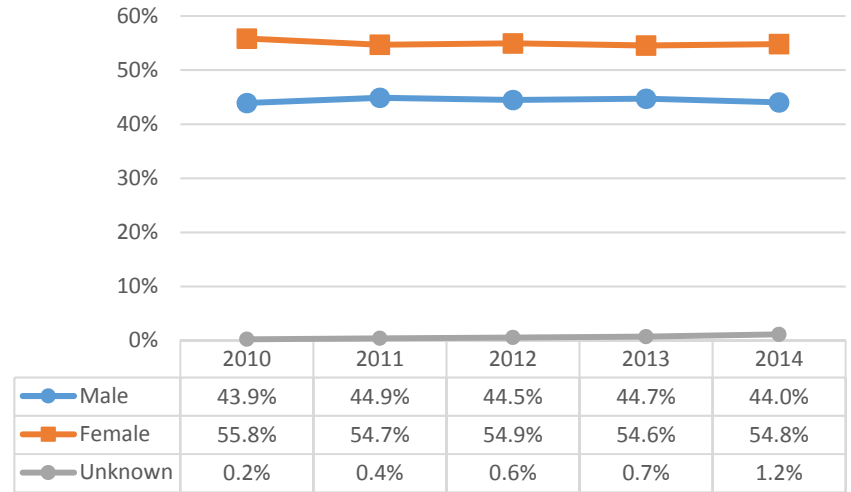


2015-2016 Program Review Datasheet Psychology

Student Gender - Psychology

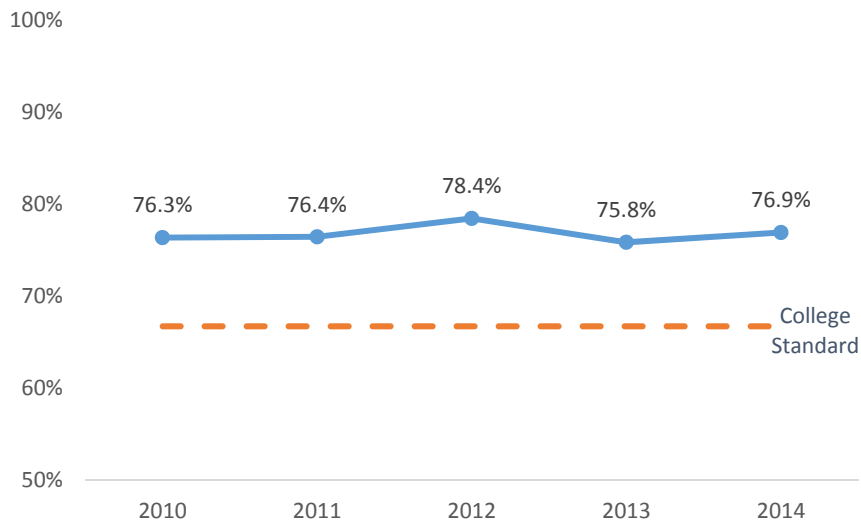


Student Gender - Ventura College

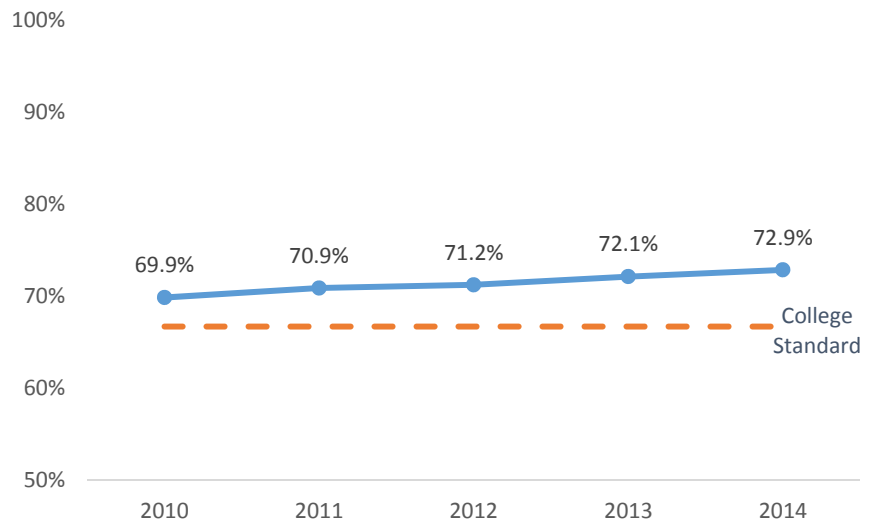


Section B - Course Success Rate

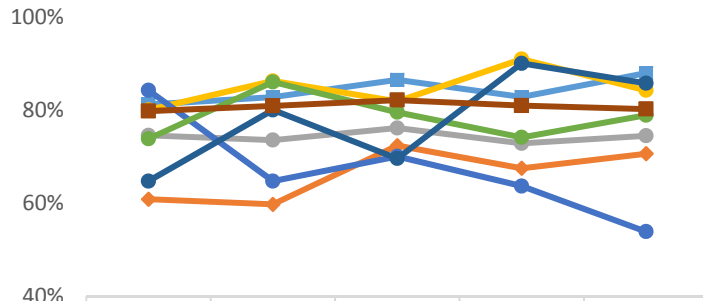
Course Success Rate - Psychology



Course Success Rate - Ventura College

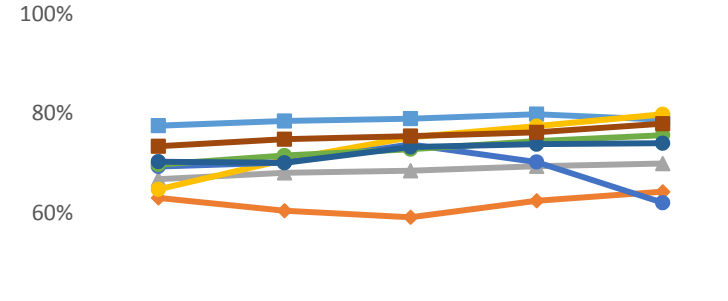


Course Success Rate by Ethnicity - Psychology*



	2010	2011	2012	2013	2014
Asian	81.2%	82.7%	86.5%	82.8%	87.9%
Black	60.8%	59.7%	72.3%	67.5%	70.6%
Hispanic	74.5%	73.5%	76.1%	72.8%	74.4%
Native Amer	80.0%	86.2%	81.8%	90.9%	84.2%
Pac Island	84.2%	64.7%	70.0%	63.6%	53.8%
Two or More	73.8%	86.0%	79.5%	74.1%	78.9%
Unknown	64.7%	80.0%	69.6%	90.0%	85.7%
White	79.7%	80.9%	82.1%	80.9%	80.2%

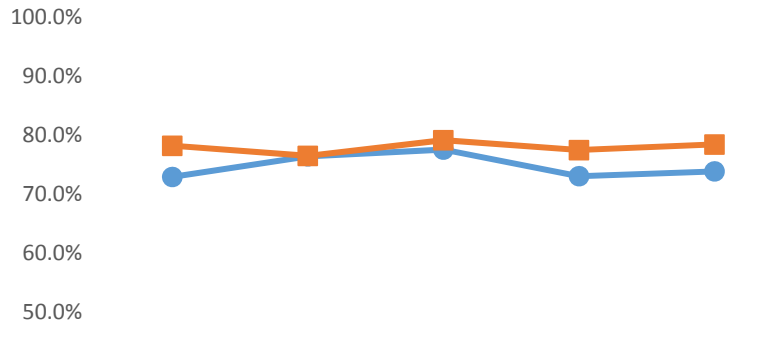
Course Success Rate by Ethnicity - Ventura College



	2010	2011	2012	2013	2014
Asian	77.6%	78.5%	79.0%	79.9%	78.8%
Black	63.1%	60.5%	59.2%	62.5%	64.3%
Hispanic	66.8%	68.1%	68.5%	69.4%	70.0%
Native Amer	64.8%	70.7%	75.2%	77.5%	79.8%
Pac Island	69.4%	70.2%	73.8%	70.3%	62.1%
Two or More	69.8%	71.6%	72.8%	74.5%	75.7%
Unknown	70.3%	70.1%	73.3%	73.8%	74.0%
White	73.4%	74.8%	75.5%	76.2%	78.0%

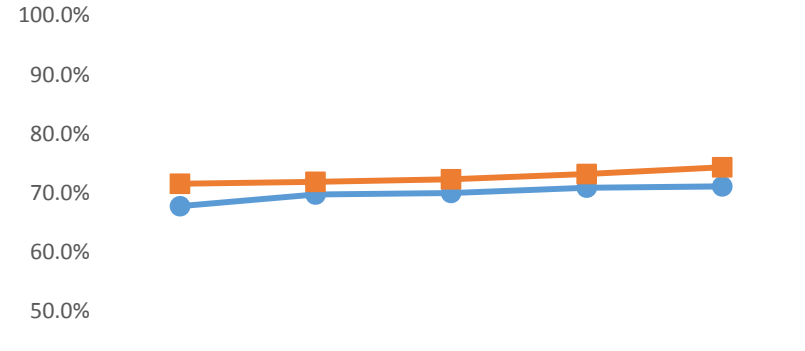
*Ethnicity data only displayed for cells with 10 or more students

Course Success Rate by Gender - Psychology



	2010	2011	2012	2013	2014
Male	72.9%	76.4%	77.5%	73.0%	73.8%
Female	78.2%	76.5%	79.1%	77.4%	78.4%

Course Success Rate by Gender - Ventura College

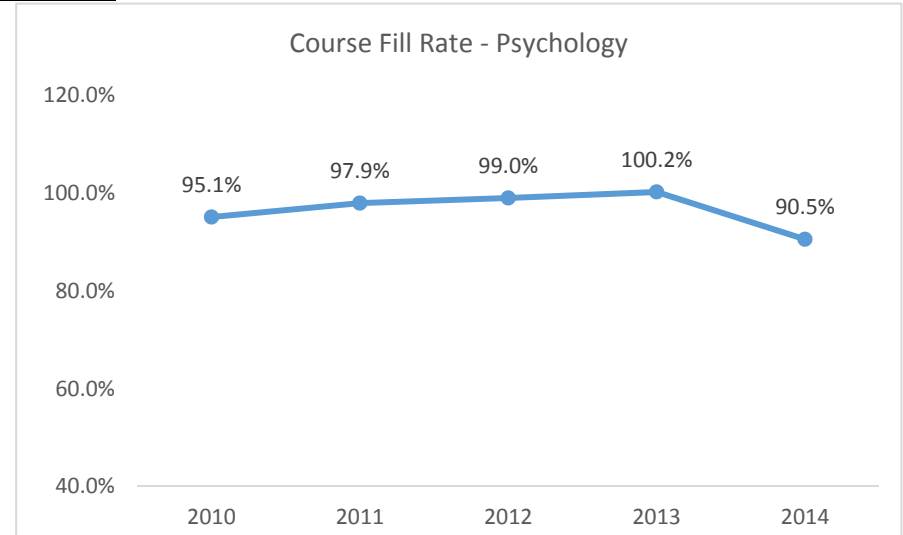


	2010	2011	2012	2013	2014
Male	67.8%	69.8%	70.0%	70.9%	71.1%
Female	71.6%	71.9%	72.3%	73.2%	74.3%

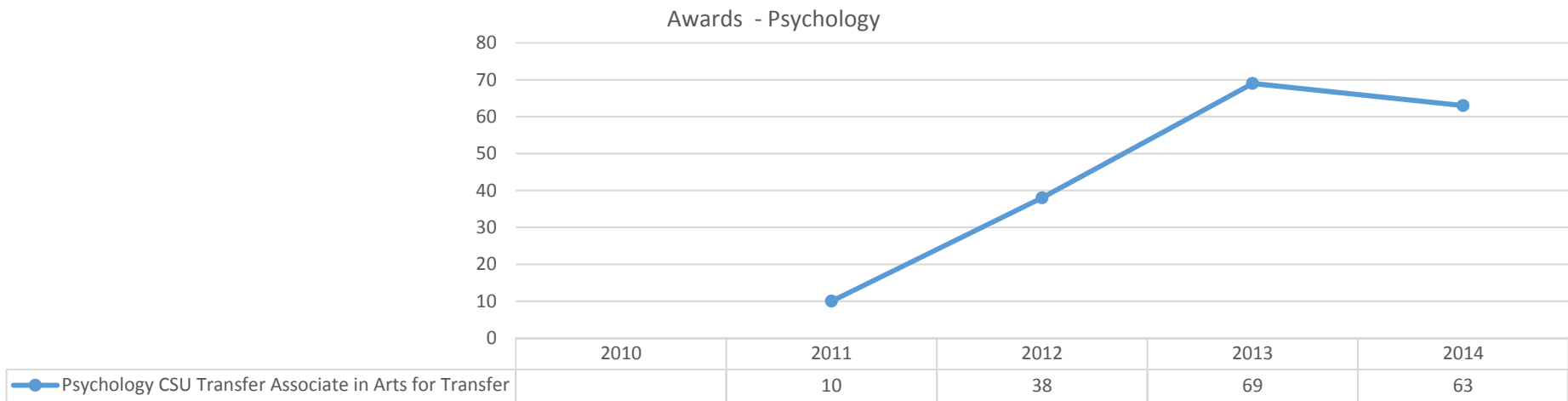
2015-2016 Program Review Datasheet

Psychology

Section C - Productivity

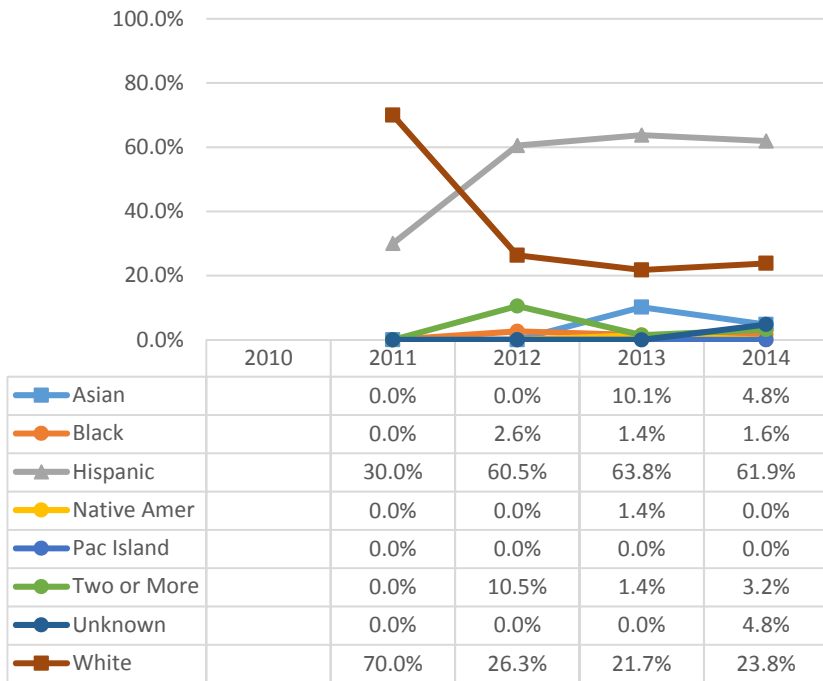


Section D - Degrees and Certificates Awarded



2015-2016 Program Review Datasheet Psychology

Awards by Ethnicity - Psychology



Awards by Gender - Psychology

