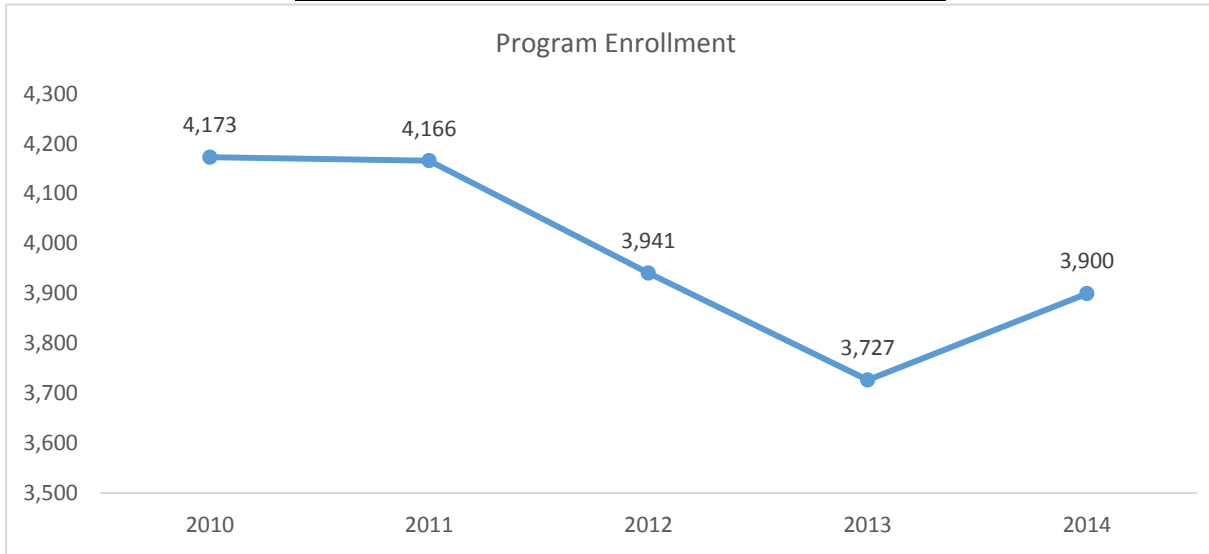
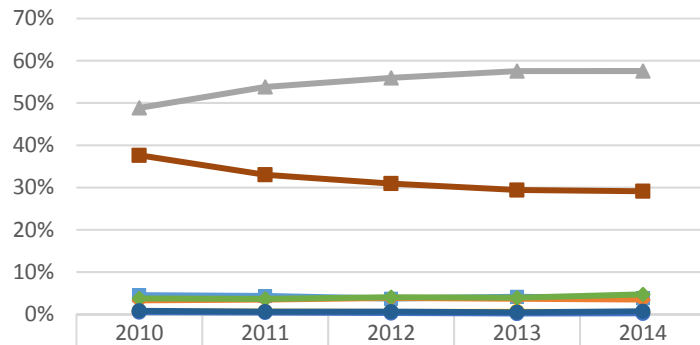


2015-2016 Program Review Datasheet History

Section A - Enrollment and Student Demographics

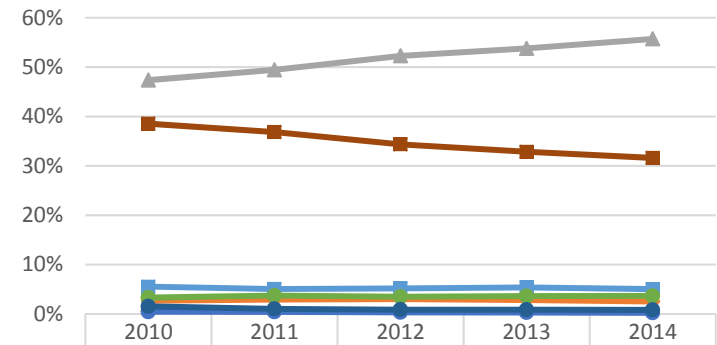


Student Ethnicity - History



	2010	2011	2012	2013	2014
Asian	4.5%	4.3%	3.7%	4.2%	3.8%
Black	3.3%	3.5%	3.8%	3.7%	3.5%
Hispanic	48.9%	53.8%	56.0%	57.6%	57.6%
Native Amer	0.6%	0.6%	0.5%	0.6%	0.5%
Pac Island	0.5%	0.4%	0.3%	0.2%	0.2%
Two or More	3.8%	3.7%	4.0%	3.9%	4.7%
Unknown	0.8%	0.6%	0.6%	0.5%	0.7%
White	37.6%	33.0%	30.9%	29.4%	29.1%

Student Ethnicity - Ventura College

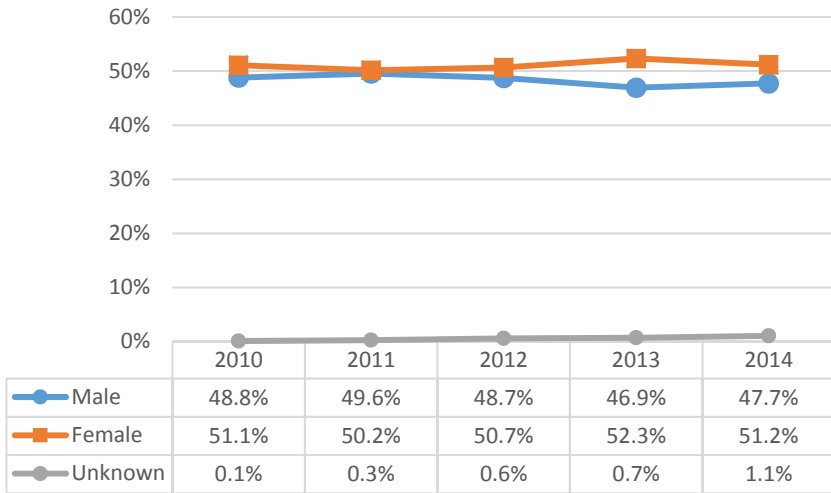


	2010	2011	2012	2013	2014
Asian	5.5%	5.1%	5.2%	5.4%	5.0%
Black	2.7%	2.9%	3.0%	2.8%	2.5%
Hispanic	47.4%	49.4%	52.3%	53.8%	55.7%
Native Amer	0.6%	0.6%	0.5%	0.4%	0.4%
Pac Island	0.4%	0.4%	0.3%	0.3%	0.2%
Two or More	3.3%	3.7%	3.5%	3.6%	3.6%
Unknown	1.5%	1.0%	0.9%	0.9%	0.8%
White	38.5%	36.8%	34.4%	32.8%	31.6%

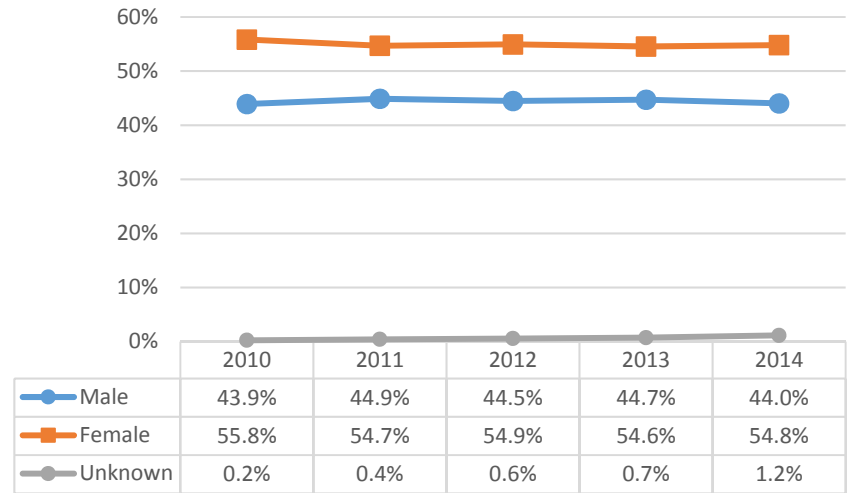


2015-2016 Program Review Datasheet History

Student Gender - History

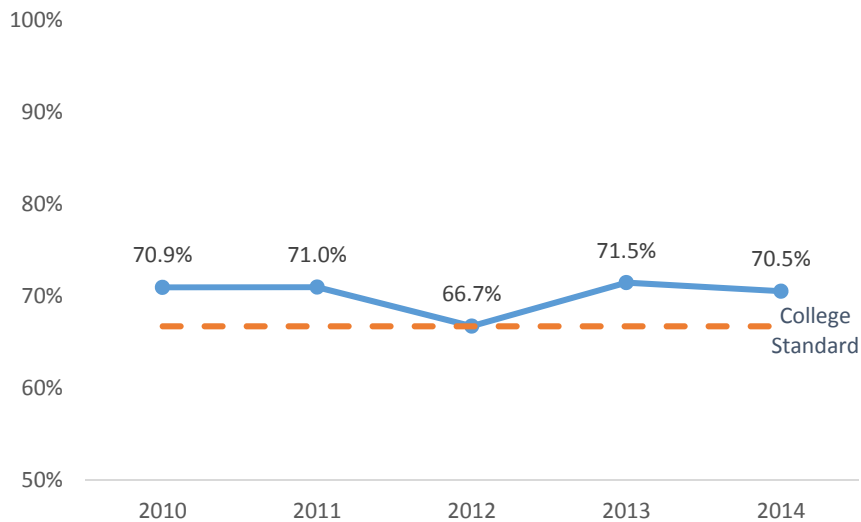


Student Gender - Ventura College

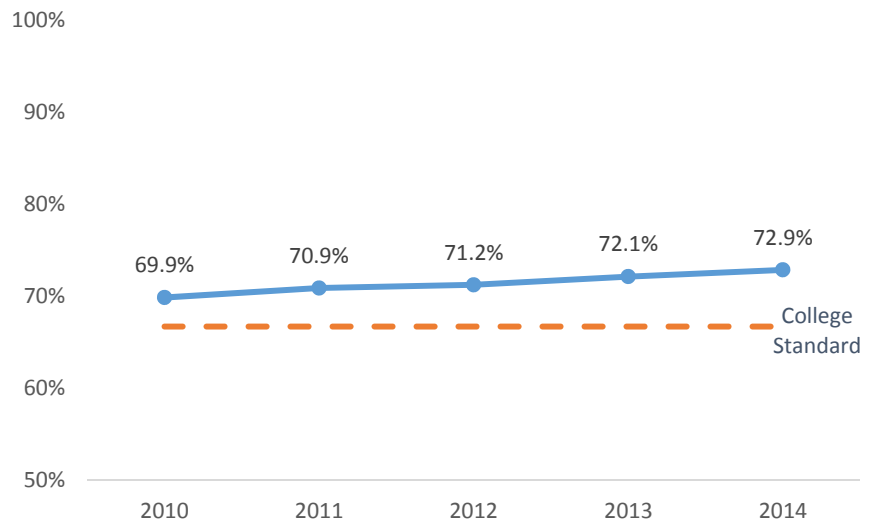


Section B - Course Success Rate

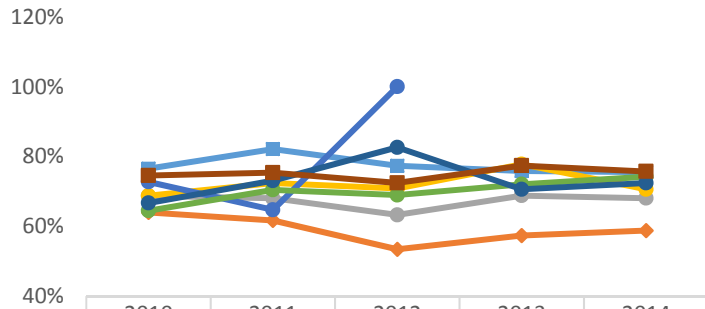
Course Success Rate - History



Course Success Rate - Ventura College

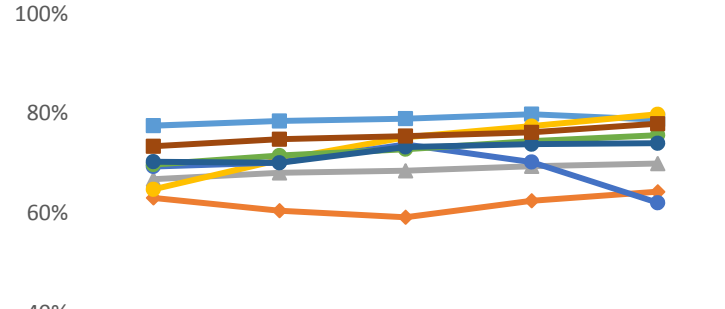


Course Success Rate by Ethnicity - History*



	2010	2011	2012	2013	2014
Asian	76.5%	82.1%	77.3%	75.8%	75.5%
Black	64.0%	61.7%	53.4%	57.4%	58.8%
Hispanic	68.7%	68.0%	63.3%	68.8%	68.1%
Native Amer	68.8%	72.4%	70.8%	77.8%	70.6%
Pac Island	72.7%	64.7%	100.0%		
Two or More	64.5%	70.4%	68.9%	72.0%	74.2%
Unknown	66.7%	73.1%	82.6%	70.6%	72.4%
White	74.5%	75.4%	72.4%	77.4%	75.7%

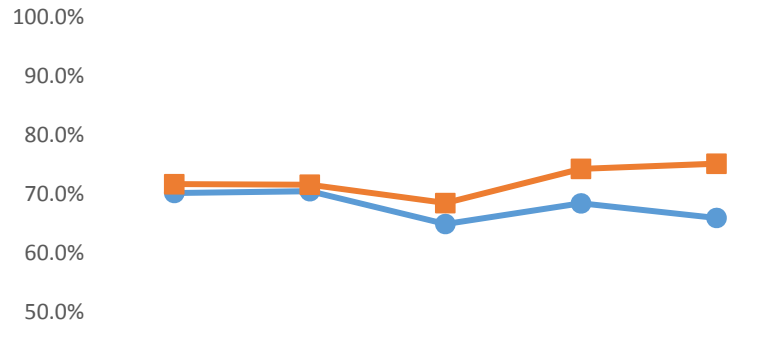
Course Success Rate by Ethnicity - Ventura College



	2010	2011	2012	2013	2014
Asian	77.6%	78.5%	79.0%	79.9%	78.8%
Black	63.1%	60.5%	59.2%	62.5%	64.3%
Hispanic	66.8%	68.1%	68.5%	69.4%	70.0%
Native Amer	64.8%	70.7%	75.2%	77.5%	79.8%
Pac Island	69.4%	70.2%	73.8%	70.3%	62.1%
Two or More	69.8%	71.6%	72.8%	74.5%	75.7%
Unknown	70.3%	70.1%	73.3%	73.8%	74.0%
White	73.4%	74.8%	75.5%	76.2%	78.0%

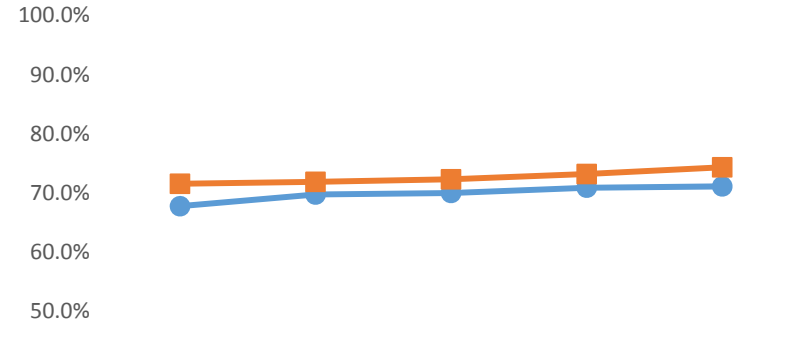
*Ethnicity data only displayed for cells with 10 or more students

Course Success Rate by Gender - History



	2010	2011	2012	2013	2014
Male	70.2%	70.5%	64.9%	68.4%	66.0%
Female	71.7%	71.6%	68.5%	74.3%	75.1%

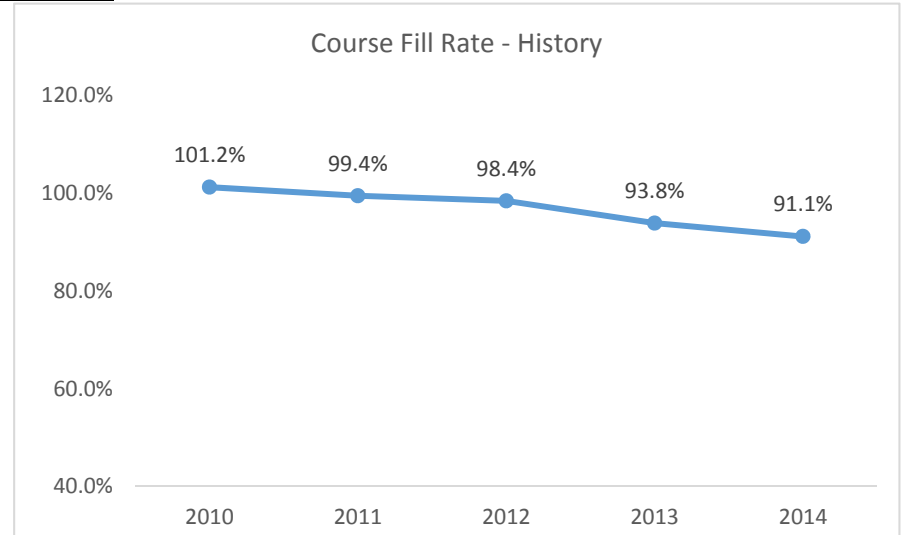
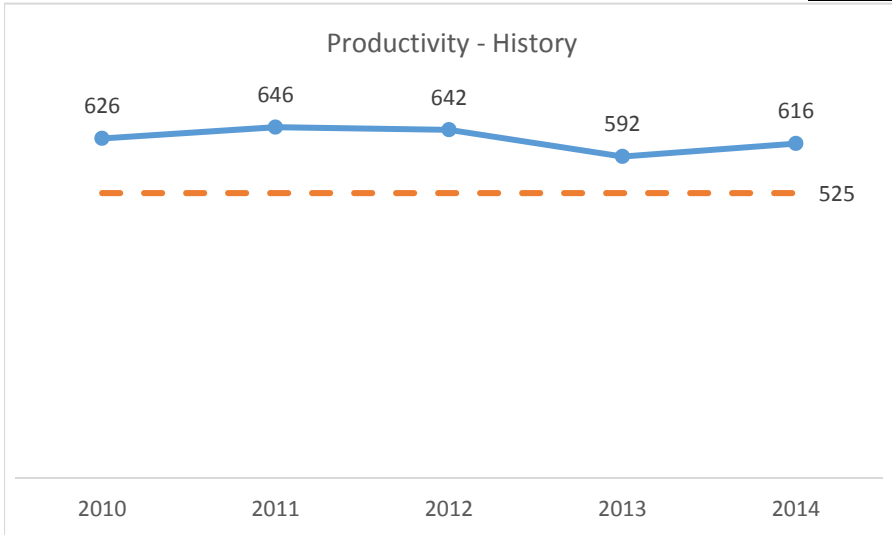
Course Success Rate by Gender - Ventura College



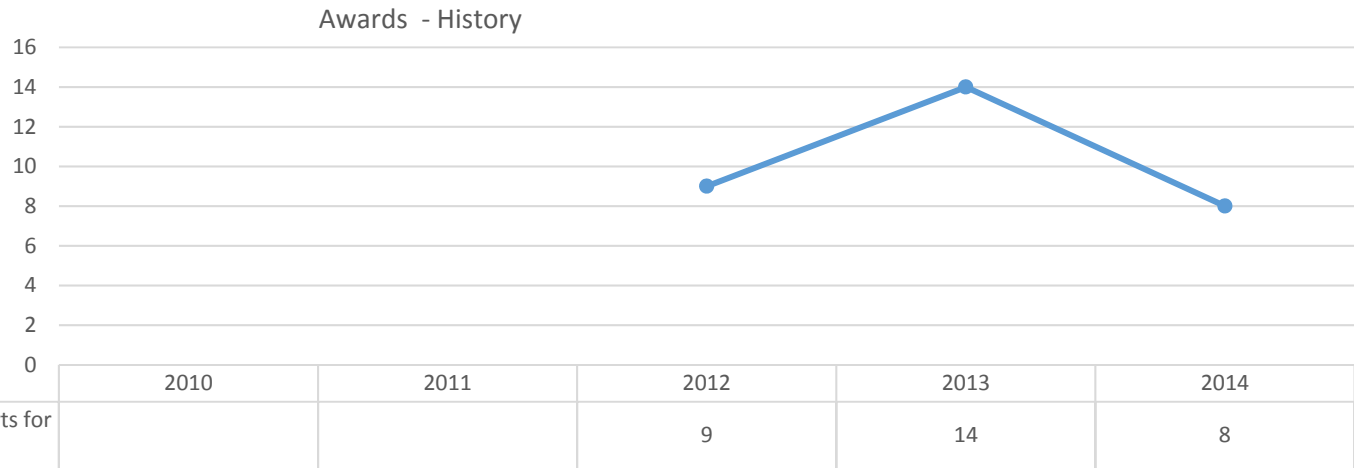
	2010	2011	2012	2013	2014
Male	67.8%	69.8%	70.0%	70.9%	71.1%
Female	71.6%	71.9%	72.3%	73.2%	74.3%

History

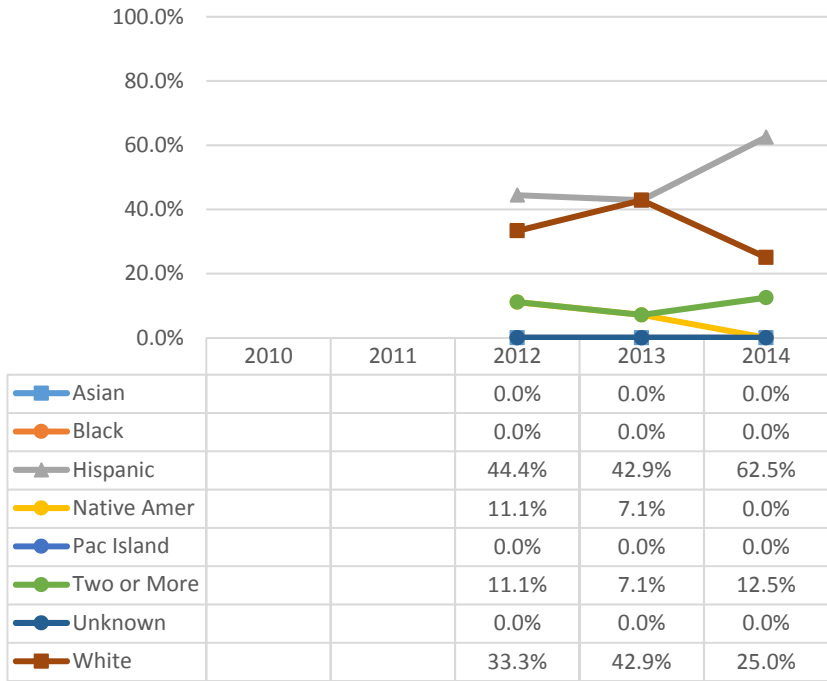
Section C - Productivity



Section D - Degrees and Certificates Awarded



Awards by Ethnicity - History



Awards by Gender - History

