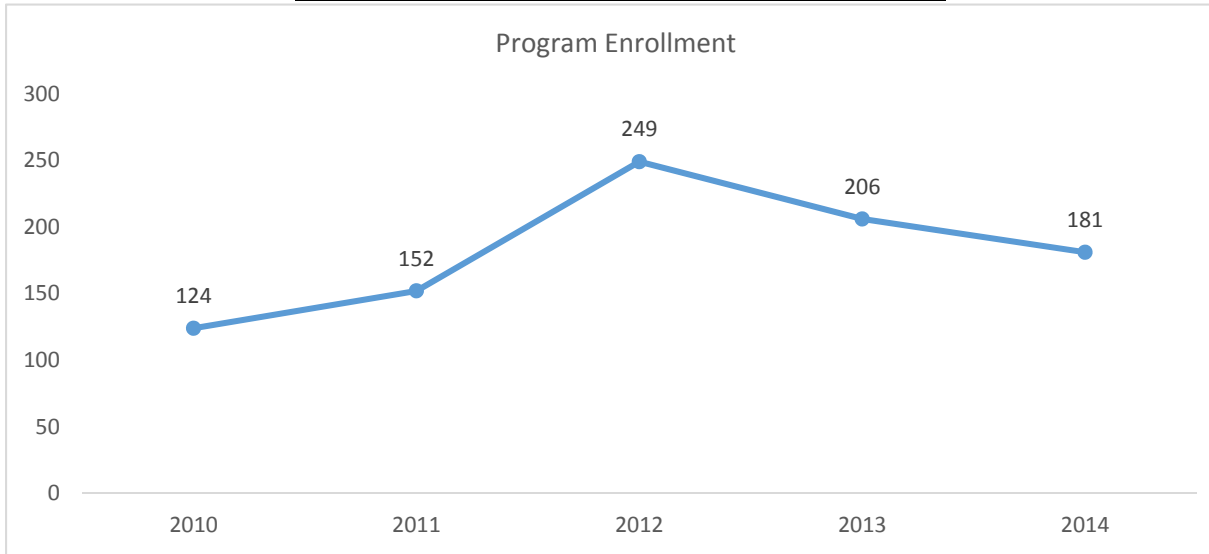


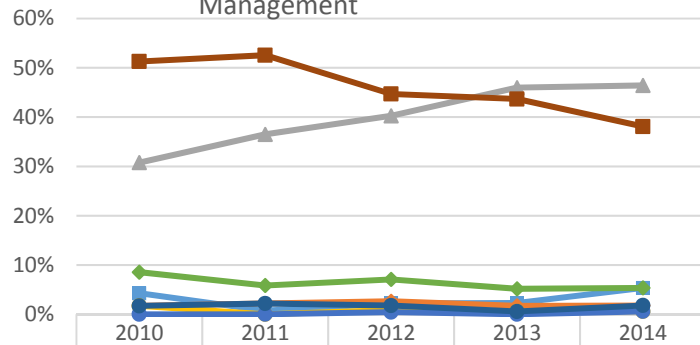
2015-2016 Program Review Datasheet

Environmental Science and Resource Management

Section A - Enrollment and Student Demographics

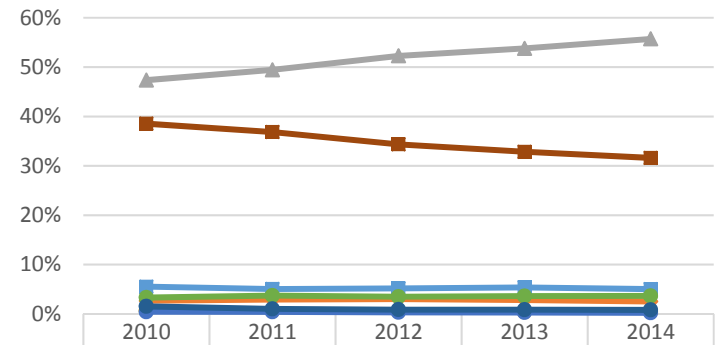


Student Ethnicity - Environmental Science and Resource Management



Ethnicity	2010	2011	2012	2013	2014
Asian	4.3%	0.7%	2.2%	2.3%	5.4%
Black	1.7%	2.2%	2.7%	1.7%	1.8%
Hispanic	30.8%	36.5%	40.3%	46.0%	46.4%
Native Amer	1.7%	0.0%	0.9%	0.6%	0.6%
Pac Island	0.0%	0.0%	0.4%	0.0%	0.6%
Two or More	8.5%	5.8%	7.1%	5.2%	5.4%
Unknown	1.7%	2.2%	1.8%	0.6%	1.8%
White	51.3%	52.6%	44.7%	43.7%	38.1%

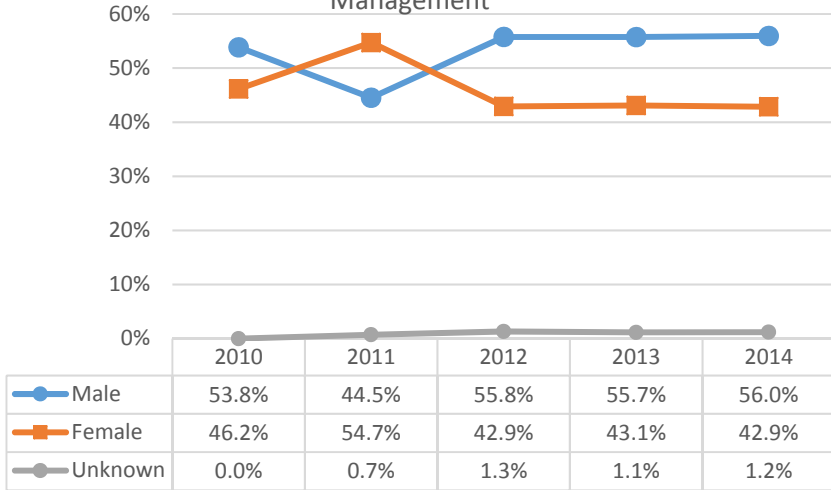
Student Ethnicity - Ventura College



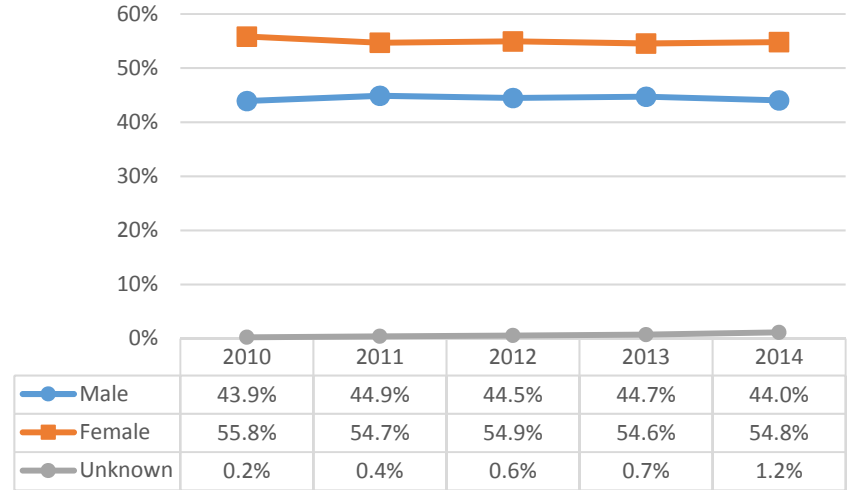
Ethnicity	2010	2011	2012	2013	2014
Asian	5.5%	5.1%	5.2%	5.4%	5.0%
Black	2.7%	2.9%	3.0%	2.8%	2.5%
Hispanic	47.4%	49.4%	52.3%	53.8%	55.7%
Native Amer	0.6%	0.6%	0.5%	0.4%	0.4%
Pac Island	0.4%	0.4%	0.3%	0.3%	0.2%
Two or More	3.3%	3.7%	3.5%	3.6%	3.6%
Unknown	1.5%	1.0%	0.9%	0.9%	0.8%
White	38.5%	36.8%	34.4%	32.8%	31.6%

2015-2016 Program Review Datasheet Environmental Science and Resource Management

Student Gender - Environmental Science and Resource Management

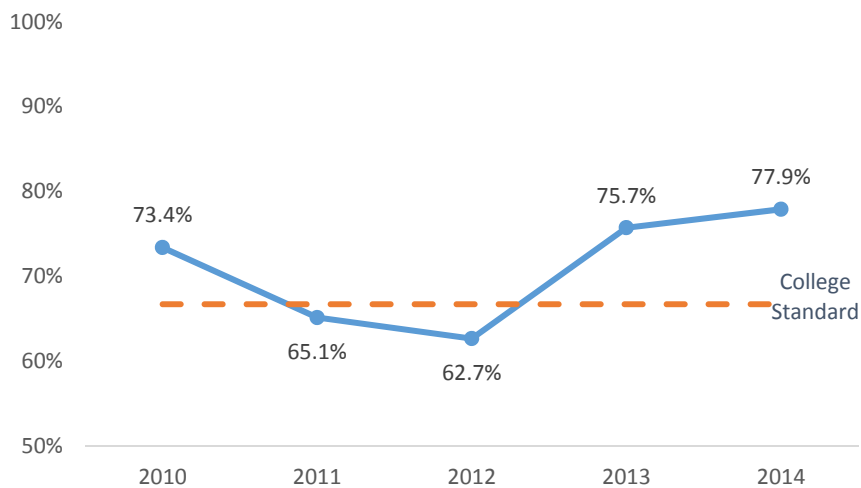


Student Gender - Ventura College

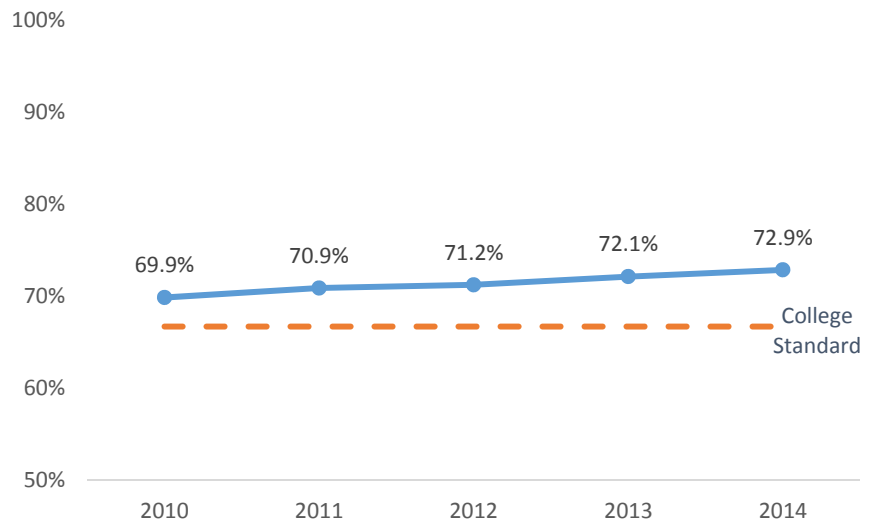


Section B - Course Success Rate

Course Success Rate - Environmental Science and Resource Management

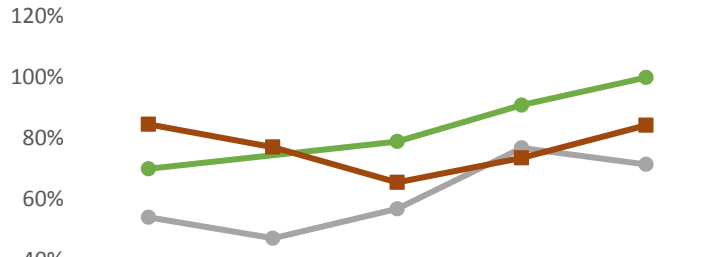


Course Success Rate - Ventura College



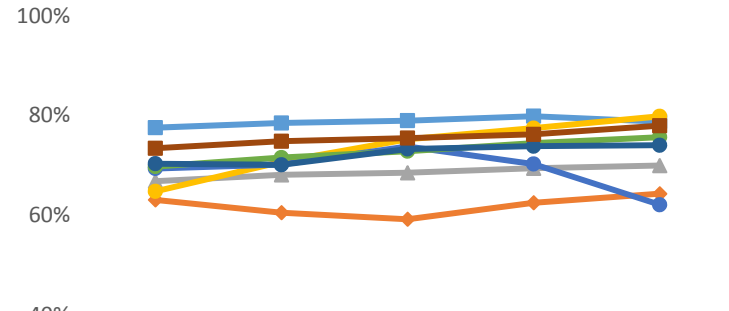
2015-2016 Program Review Datasheet Environmental Science and Resource Management

Course Success Rate by Ethnicity - Environmental Science and Resource Management*



	2010	2011	2012	2013	2014
Asian					
Black					
Hispanic	54.1%	47.2%	56.8%	76.8%	71.4%
Native Amer					
Pac Island					
Two or More	70.0%		78.9%	90.9%	100.0%
Unknown					
White	84.6%	77.1%	65.5%	73.6%	84.3%

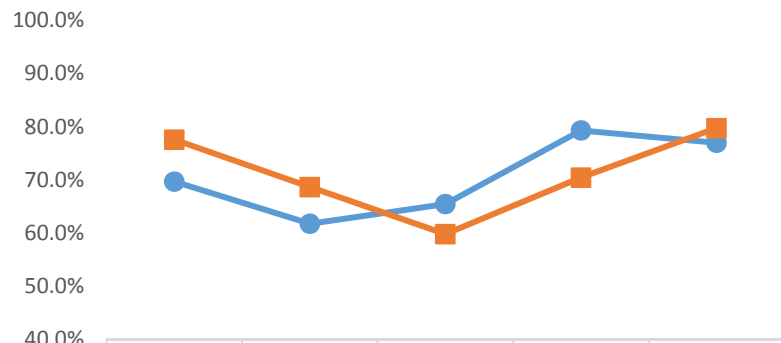
Course Success Rate by Ethnicity - Ventura College



	2010	2011	2012	2013	2014
Asian	77.6%	78.5%	79.0%	79.9%	78.8%
Black	63.1%	60.5%	59.2%	62.5%	64.3%
Hispanic	66.8%	68.1%	68.5%	69.4%	70.0%
Native Amer	64.8%	70.7%	75.2%	77.5%	79.8%
Pac Island	69.4%	70.2%	73.8%	70.3%	62.1%
Two or More	69.8%	71.6%	72.8%	74.5%	75.7%
Unknown	70.3%	70.1%	73.3%	73.8%	74.0%
White	73.4%	74.8%	75.5%	76.2%	78.0%

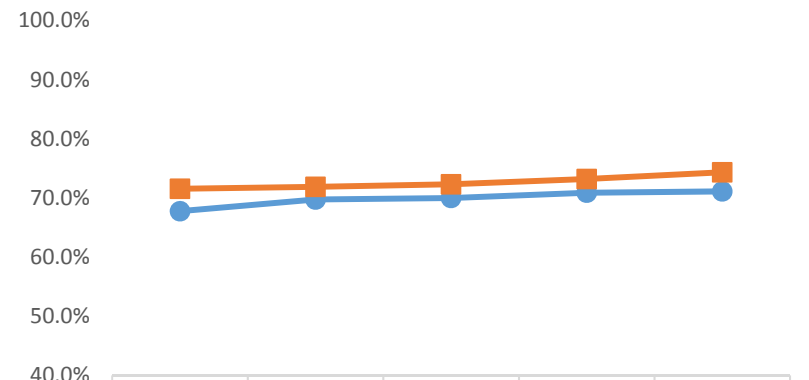
*Ethnicity data only displayed for cells with 10 or more students

Course Success Rate by Gender - Environmental Science and Resource Management



	2010	2011	2012	2013	2014
Male	69.7%	61.8%	65.5%	79.3%	77.0%
Female	77.6%	68.7%	59.8%	70.5%	79.7%

Course Success Rate by Gender - Ventura College

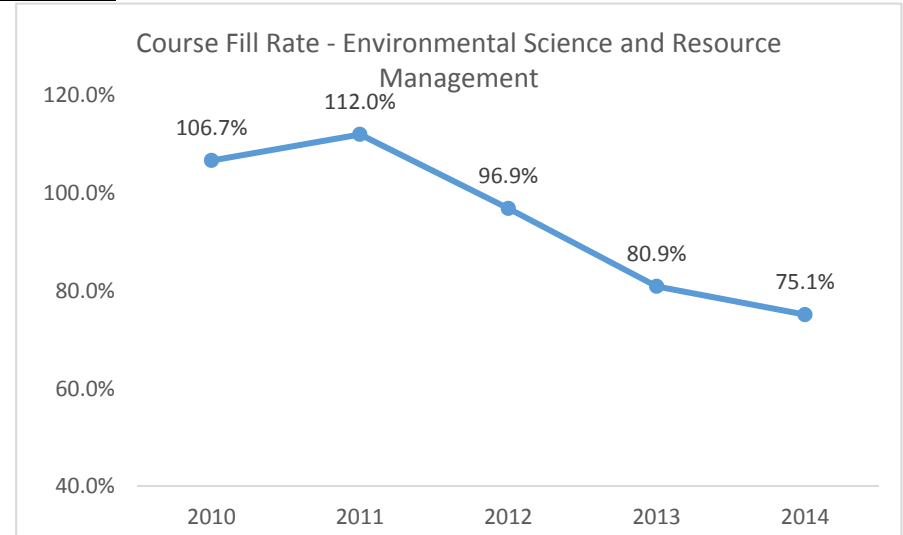
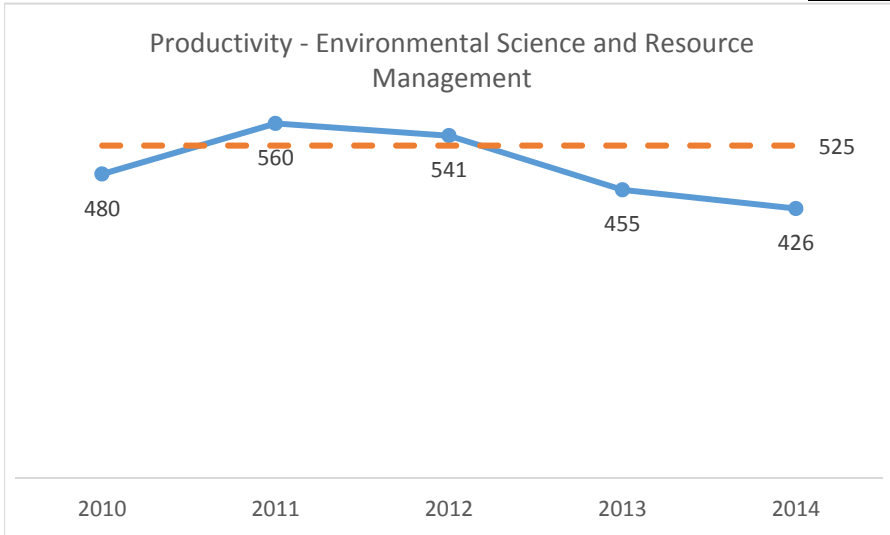


	2010	2011	2012	2013	2014
Male	67.8%	69.8%	70.0%	70.9%	71.1%
Female	71.6%	71.9%	72.3%	73.2%	74.3%



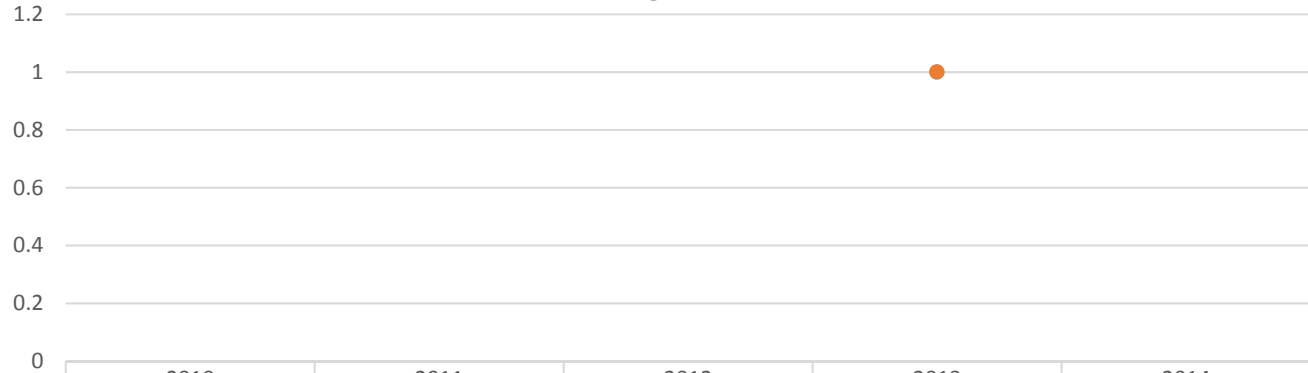
2015-2016 Program Review Datasheet Environmental Science and Resource Management

Section C - Productivity



Section D - Degrees and Certificates Awarded

Awards - Environmental Science and Resource Management



	2010	2011	2012	2013	2014
● Natural Resources Associate in Science				1	
● Natural Resources Certificate/30 - 59.5 units				1	

2015-2016 Program Review Datasheet Environmental Science and Resource Management

Awards by Ethnicity - Environmental Science and Resource Management



Awards by Gender - Environmental Science and Resource Management

