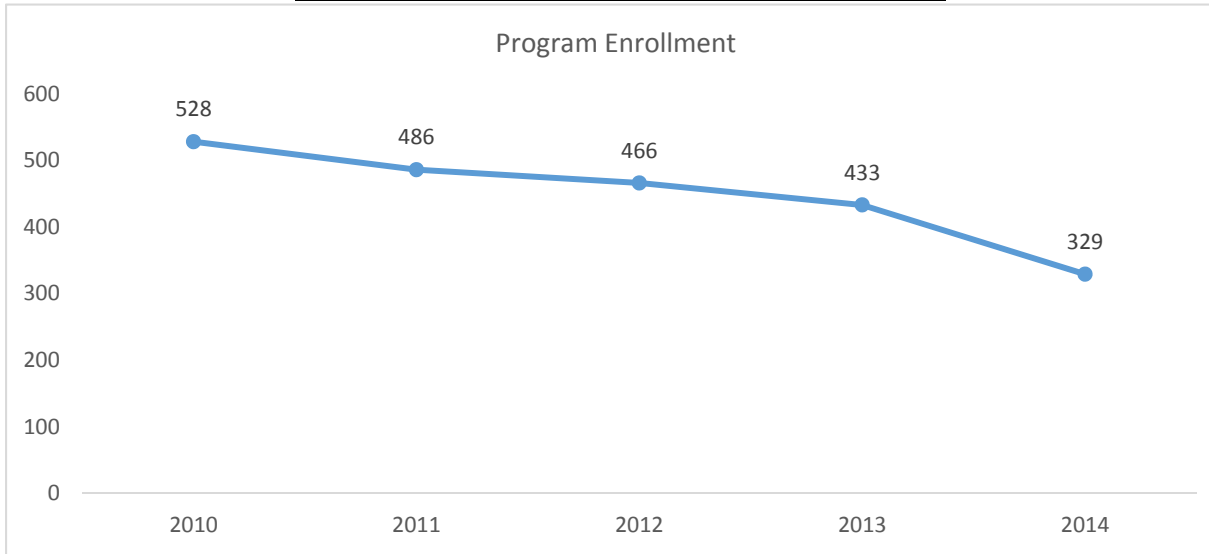
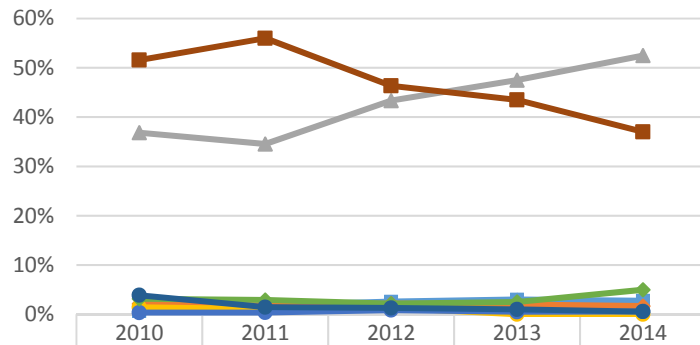


2015-2016 Program Review Datasheet Construction Technology

Section A - Enrollment and Student Demographics

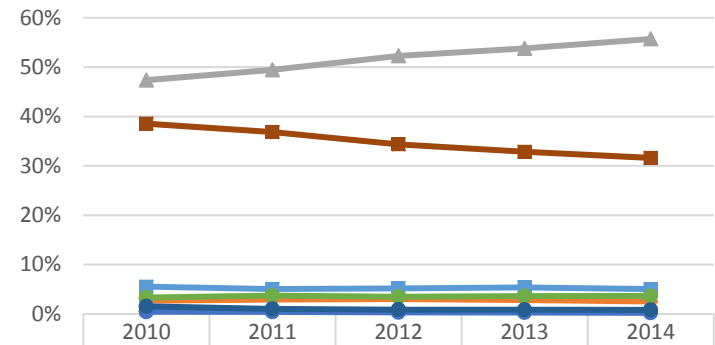


Student Ethnicity - Construction Technology



Ethnicity	2010	2011	2012	2013	2014
Asian	0.7%	1.8%	2.6%	3.0%	2.8%
Black	2.1%	1.8%	2.1%	2.0%	1.7%
Hispanic	36.8%	34.5%	43.3%	47.5%	52.5%
Native Amer	1.4%	1.1%	1.3%	0.0%	0.0%
Pac Island	0.4%	0.4%	0.9%	0.5%	0.6%
Two or More	3.2%	2.9%	2.1%	2.5%	5.0%
Unknown	3.9%	1.5%	1.3%	1.0%	0.6%
White	51.6%	56.0%	46.4%	43.5%	37.0%

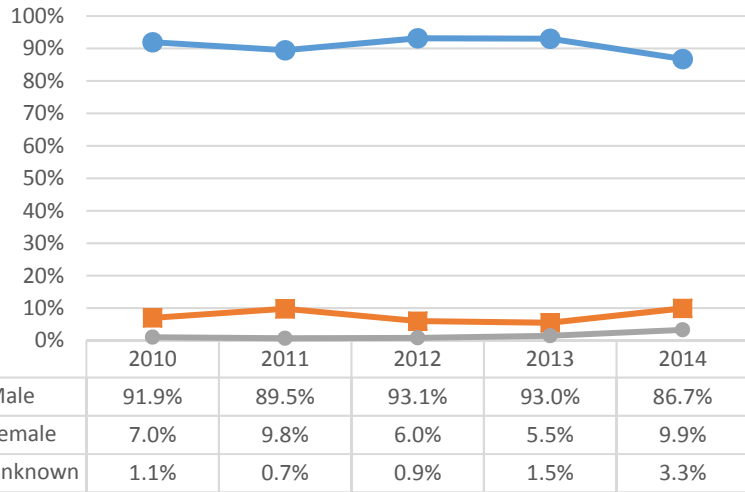
Student Ethnicity - Ventura College



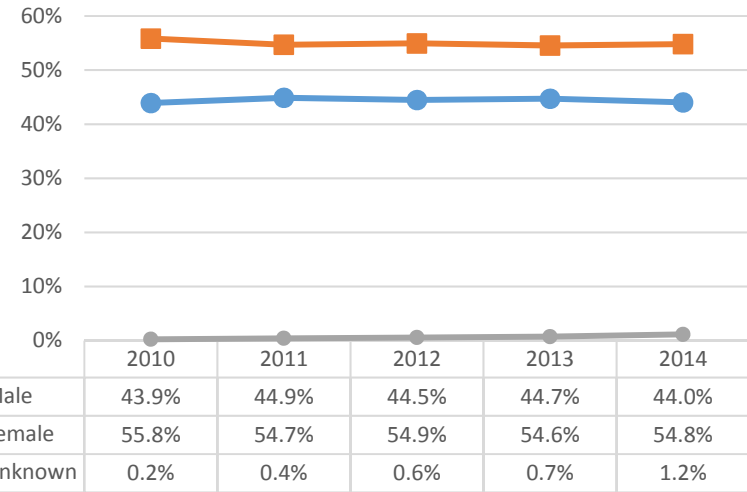
Ethnicity	2010	2011	2012	2013	2014
Asian	5.5%	5.1%	5.2%	5.4%	5.0%
Black	2.7%	2.9%	3.0%	2.8%	2.5%
Hispanic	47.4%	49.4%	52.3%	53.8%	55.7%
Native Amer	0.6%	0.6%	0.5%	0.4%	0.4%
Pac Island	0.4%	0.4%	0.3%	0.3%	0.2%
Two or More	3.3%	3.7%	3.5%	3.6%	3.6%
Unknown	1.5%	1.0%	0.9%	0.9%	0.8%
White	38.5%	36.8%	34.4%	32.8%	31.6%

2015-2016 Program Review Datasheet Construction Technology

Student Gender - Construction Technology

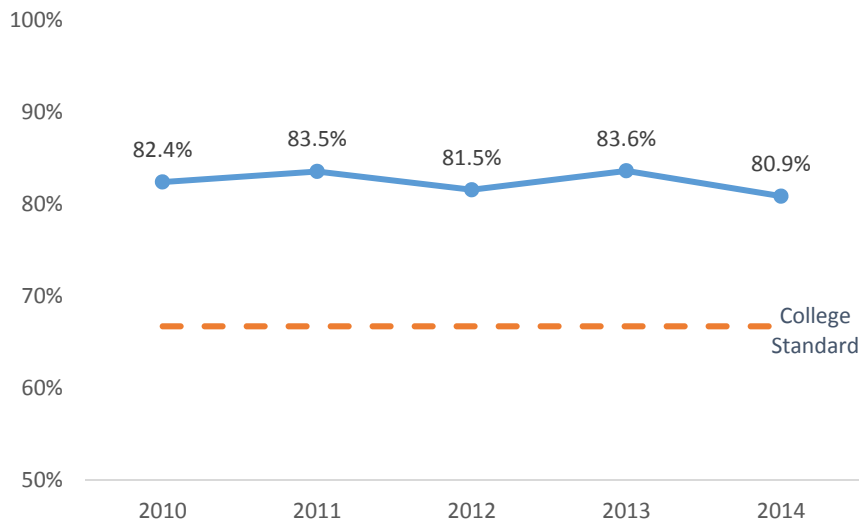


Student Gender - Ventura College

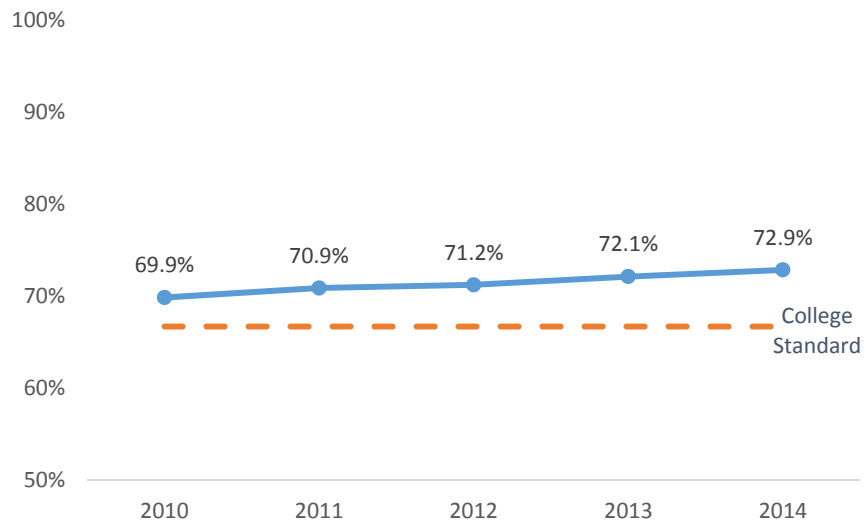


Section B - Course Success Rate

Course Success Rate - Construction Technology

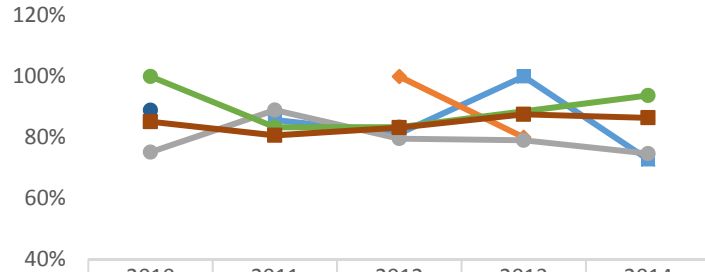


Course Success Rate - Ventura College



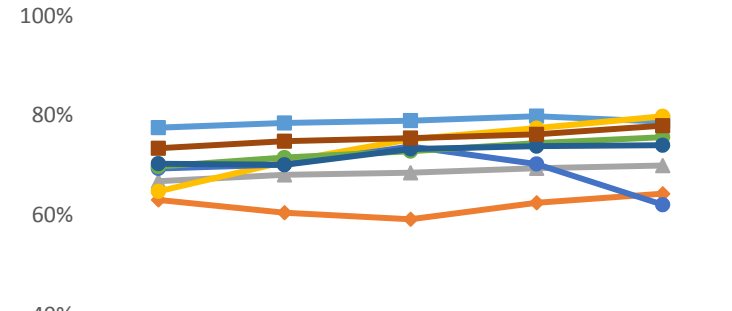
2015-2016 Program Review Datasheet Construction Technology

Course Success Rate by Ethnicity - Construction Technology*



	2010	2011	2012	2013	2014
Asian		85.7%	81.3%	100.0%	72.7%
Black			100.0%	80.0%	
Hispanic	75.1%	89.0%	79.6%	79.0%	74.7%
Native Amer					
Pac Island					
Two or More	100.0%	83.3%	83.3%		93.8%
Unknown	88.9%				
White	85.1%	80.7%	83.2%	87.6%	86.4%

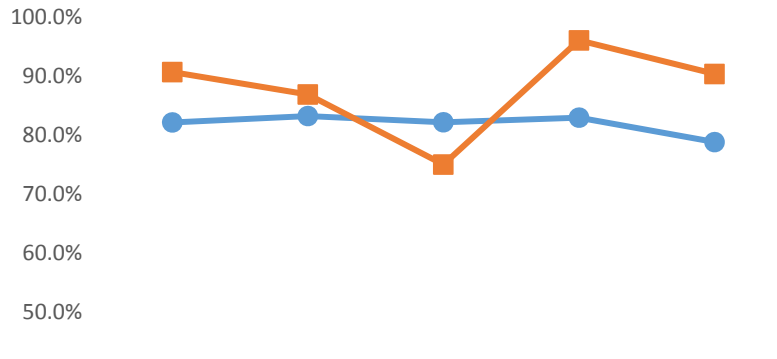
Course Success Rate by Ethnicity - Ventura College



	2010	2011	2012	2013	2014
Asian	77.6%	78.5%	79.0%	79.9%	78.8%
Black	63.1%	60.5%	59.2%	62.5%	64.3%
Hispanic	66.8%	68.1%	68.5%	69.4%	70.0%
Native Amer	64.8%	70.7%	75.2%	77.5%	79.8%
Pac Island	69.4%	70.2%	73.8%	70.3%	62.1%
Two or More	69.8%	71.6%	72.8%	74.5%	75.7%
Unknown	70.3%	70.1%	73.3%	73.8%	74.0%
White	73.4%	74.8%	75.5%	76.2%	78.0%

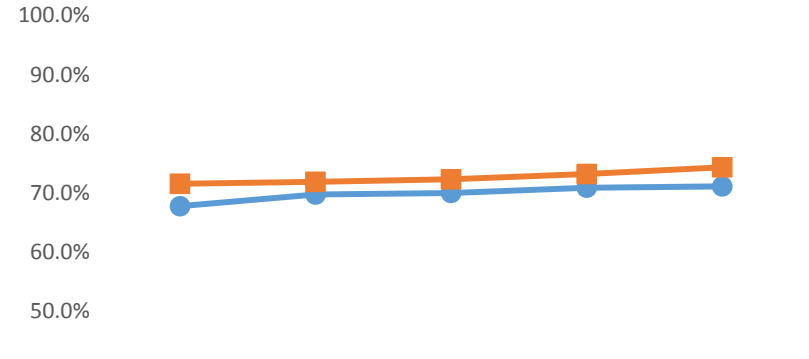
*Ethnicity data only displayed for cells with 10 or more students

Course Success Rate by Gender - Construction Technology



	2010	2011	2012	2013	2014
Male	82.1%	83.2%	82.1%	82.9%	78.8%
Female	90.6%	86.8%	75.0%	96.0%	90.3%

Course Success Rate by Gender - Ventura College

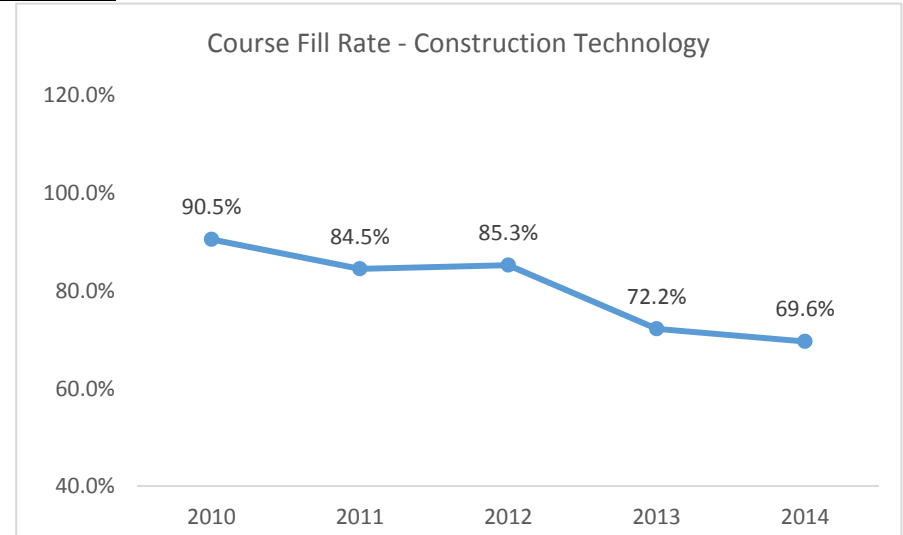
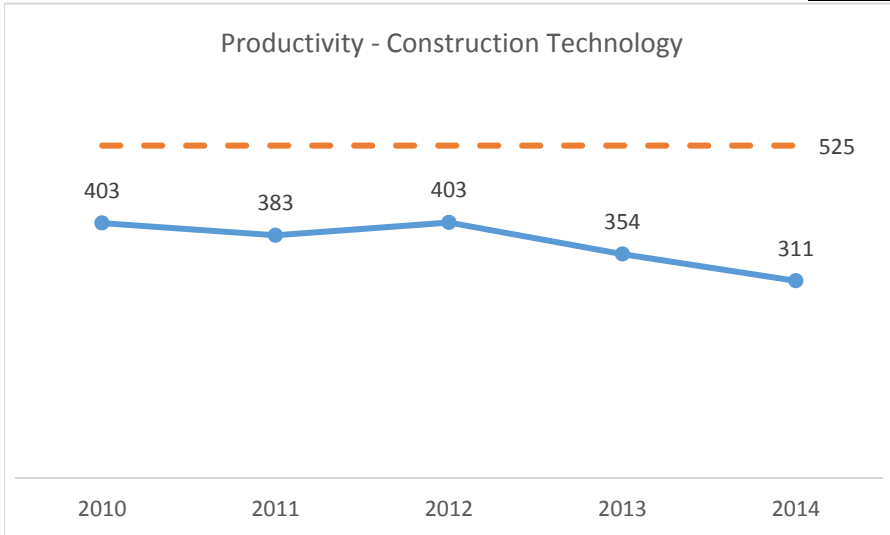


	2010	2011	2012	2013	2014
Male	67.8%	69.8%	70.0%	70.9%	71.1%
Female	71.6%	71.9%	72.3%	73.2%	74.3%

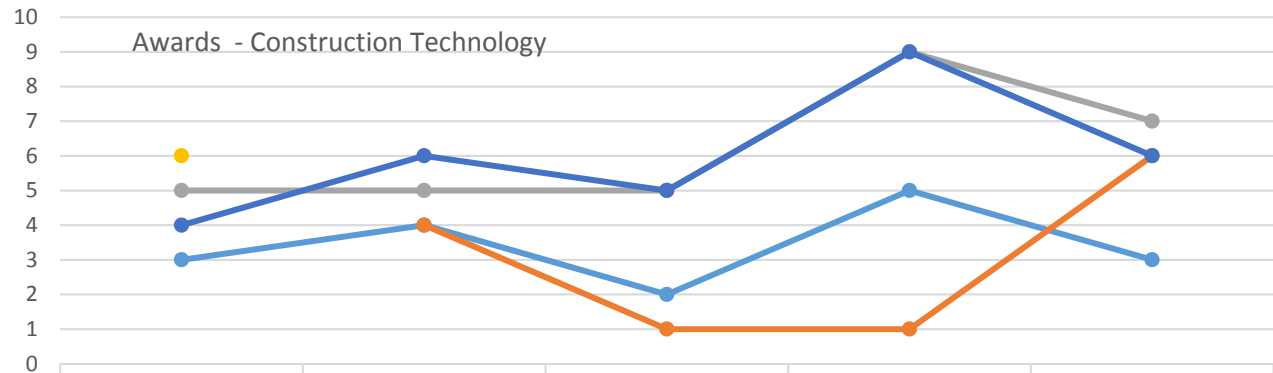
2015-2016 Program Review Datasheet

Construction Technology

Section C - Productivity



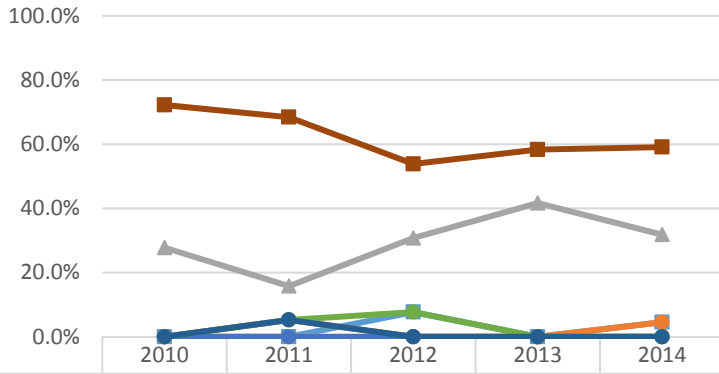
Section D - Degrees and Certificates Awarded



	2010	2011	2012	2013	2014
Const Tech: Building Inspection Associate in Science	3	4	2	5	3
Const Tech: Building Inspection Certificate/18 - 29.5 units		4	1	1	6
Construction Technology: Mgmt Associate in Science	5	5	5	9	7
Construction Technology: Mgmt Certificate/18 - 29.5 units	6				
Construction Technology: Mgmt Certificate/30 - 59.5 units	4	6	5	9	6

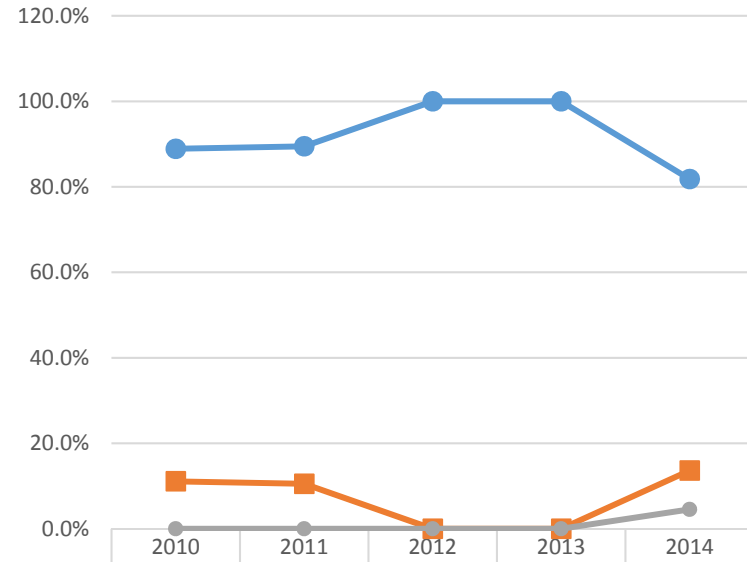
2015-2016 Program Review Datasheet Construction Technology

Awards by Ethnicity - Construction Technology



	2010	2011	2012	2013	2014
Asian	0.0%	0.0%	7.7%	0.0%	4.5%
Black	0.0%	5.3%	0.0%	0.0%	4.5%
Hispanic	27.8%	15.8%	30.8%	41.7%	31.8%
Native Amer	0.0%	0.0%	0.0%	0.0%	0.0%
Pac Island	0.0%	0.0%	0.0%	0.0%	0.0%
Two or More	0.0%	5.3%	7.7%	0.0%	0.0%
Unknown	0.0%	5.3%	0.0%	0.0%	0.0%
White	72.2%	68.4%	53.8%	58.3%	59.1%

Awards by Gender - Construction Technology



	2010	2011	2012	2013	2014
Male	88.9%	89.5%	100.0%	100.0%	81.8%
Female	11.1%	10.5%	0.0%	0.0%	13.6%
Unknown	0.0%	0.0%	0.0%	0.0%	4.5%