

IV. FALL TERM ENROLLMENT TRENDS

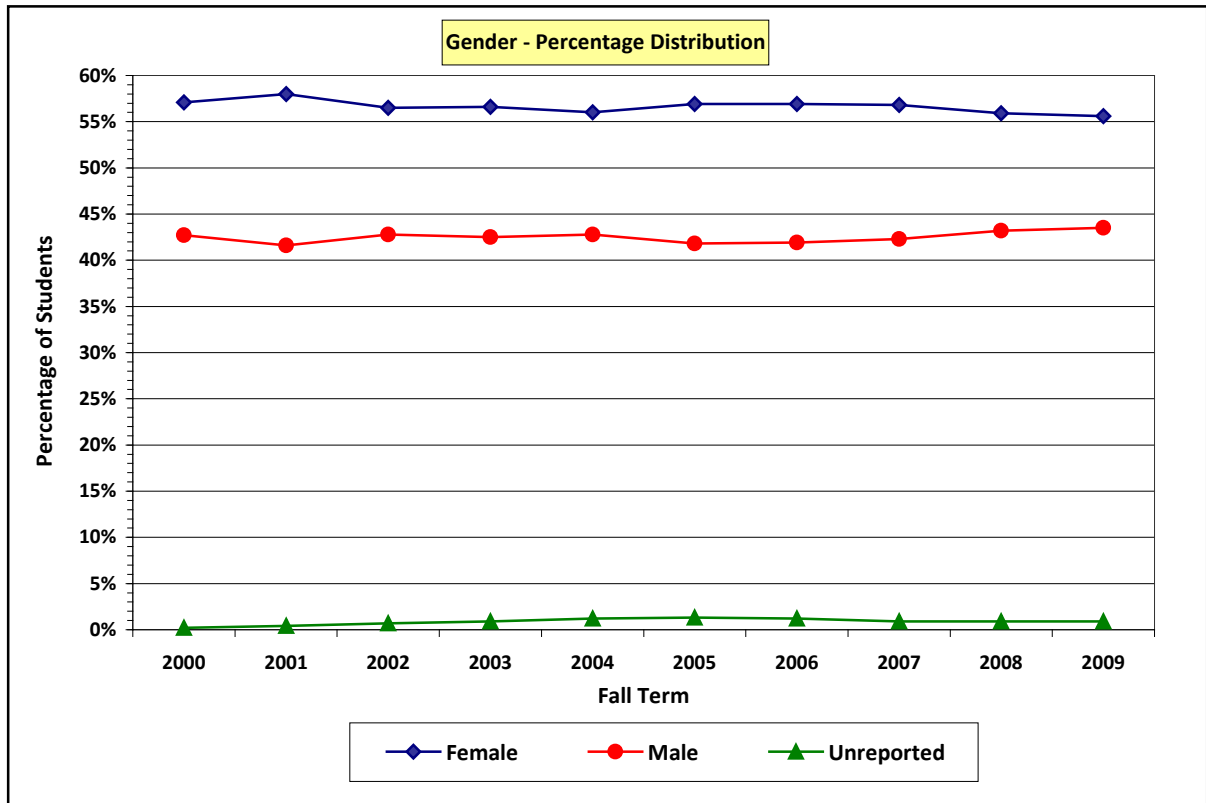
Table of Contents

<u>ITEM</u>	<u>PAGE</u>
A. Headcount and Seatcount Enrollments	1
B. Student Demographics	2
1. Gender	
2. Race/Ethnicity	
3. Age Group	
4. Enrollment Status	
5. Citizenship Status	
6. Educational Goal	
7. Day / Evening Status	
8. Full-Time / Part-Time Status	
9. Legal Residency Status	
10. Ventura County Residents Attending VC	
C. Course Enrollments	15
1. Credit Status	
2. Day / Evening Status	
3. Distance Education	

IV. FALL TERM ENROLLMENT TRENDS

B-1. Gender

Over the past decade, the proportion of **female** students at Ventura College has been about **56%**, with **males** accounting for about **43%** of all students (the remaining 1% was composed students who did not report their gender). In **fall 2014**, the **statewide** gender proportions were 53% female, 46% male, and 1% unreported. The percentage of female students at **VC** in **fall 2014** was 55%, which is slightly **above** than the statewide average; the percentage of male students was 44%, about two percentage points **below** the statewide average.



Ventura College Students by Gender Fall Terms: 2005 through 2014										
Gender	Fall Term									
	2005	2006	2007	2008	2009	2010	2011	2012	2013	2014
Female	6,832	7,181	7,573	7,975	7,927	7,742	7,546	7,168	7,069	7,107
Male	5,019	5,294	5,634	6,160	6,206	5,968	6,164	5,821	5,816	5,733
Unreported	164	153	125	129	122	130	53	78	94	149
Total Count	12,015	12,628	13,332	14,264	14,255	13,840	13,763	13,067	12,979	12,989
Gender	Fall Term									
	2005	2006	2007	2008	2009	2010	2011	2012	2013	2014
Female	56.9%	56.9%	56.8%	55.9%	55.6%	56.0%	54.8%	54.9%	54.5%	54.7%
Male	41.8%	41.9%	42.3%	43.2%	43.5%	43.1%	44.8%	44.5%	44.8%	44.1%
Unreported	1.3%	1.2%	0.9%	0.9%	0.9%	0.9%	0.4%	0.6%	0.7%	1.2%
Total Percent	100.0%	100.0%	100.0%	100.0%	100.0%	100.0%	100.0%	100.0%	100.0%	100.0%

Source: California Community Colleges Chancellor's Office – Data Mart, Fall Terms: 2005 to 2009
Ventura County Community College District – Banner Data System, Fall Terms: 2010 to 2014 (4th week census)

IV. FALL TERM ENROLLMENT TRENDS

B-2. Race/Ethnicity – Data Tables

In fall 2008, the number of Hispanic students at Ventura College surpassed the number of White students, resulting in Hispanics becoming the largest racial/ethnic group at the college. In **fall 2014**, the proportion of Hispanic students at VC was **57%** compared to **30%** for White students. As of the 2010 U.S. Census, the percentage of Hispanics residing in the college’s **service area** was **43%**, which is **12** percentage points **lower** than Hispanic student enrollment at Ventura College in fall 2014.

Population percentages for Ventura College’s service area and for all of Ventura County are presented in the data table below. The Census Bureau reports population data using two characteristics: **Ethnicity** (Hispanic/Latino **or** Non-Hispanic/Non-Latino) and **Race**. Ethnicity or Race percentages associated with each city or area sum to 100%.

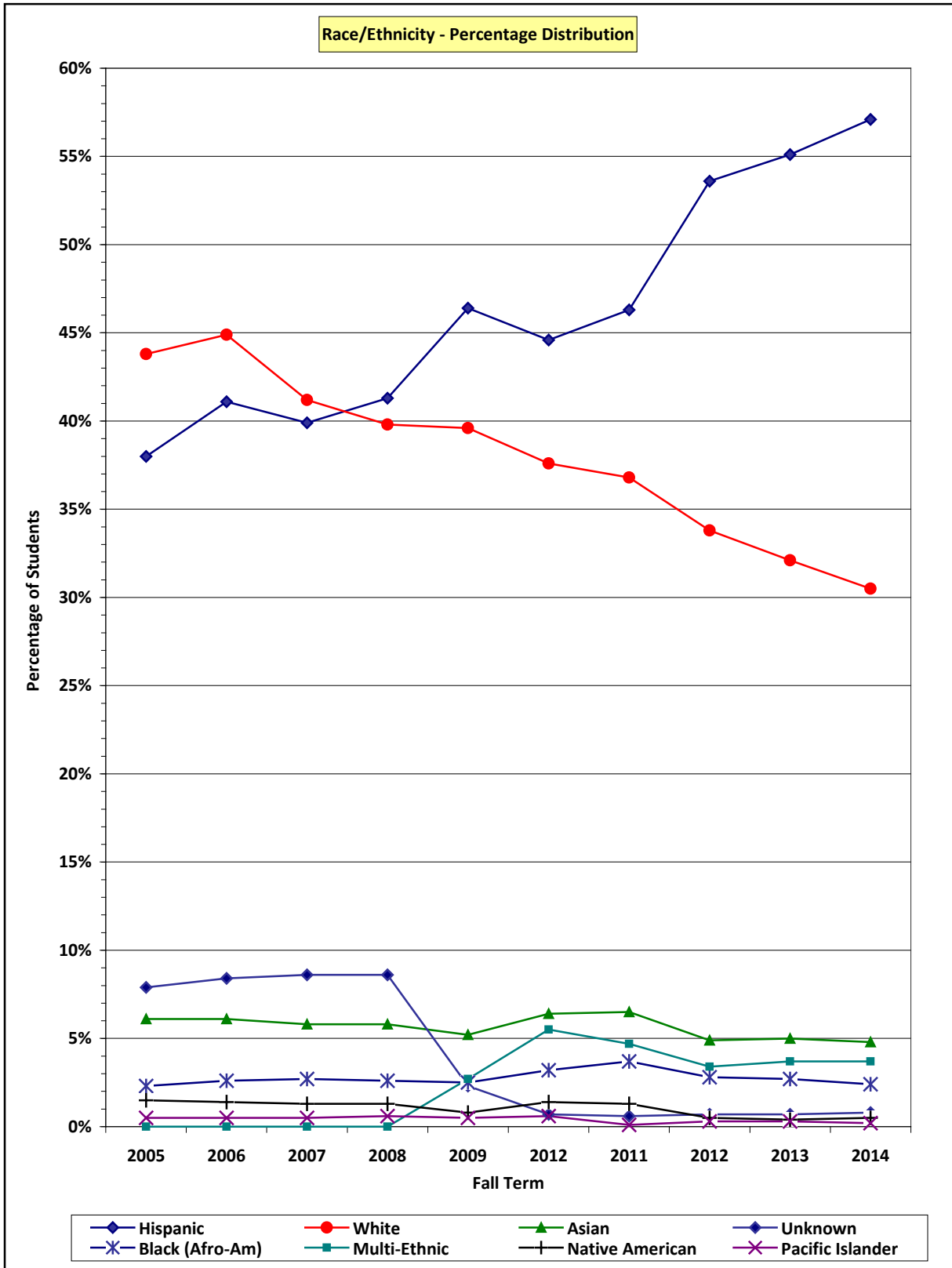
U. S. Census 2010										
City or Area	Total Pop.	Ethnicity		Population by Race						
		Latino	Not Lat.	Asian	Black	Nat Am	Pac Isl	Multi	Other	White
Fillmore	19,488	74.1%	25.9%	0.9%	0.5%	1.4%	0.1%	5.3%	34.7%	57.1%
Santa Paula	32,060	77.7%	22.3%	0.7%	0.5%	1.6%	0.1%	3.8%	29.8%	63.5%
Ojai Valley	27,784	20.9%	79.1%	1.6%	0.6%	1.0%	0.0%	3.2%	8.2%	85.4%
Ventura	111,889	32.6%	67.4%	3.3%	1.6%	1.2%	0.2%	5.2%	12.2%	76.3%
VC Area	191,221	42.7%	57.3%	2.4%	1.2%	1.3%	0.1%	4.7%	16.8%	73.5%
Ven. Cnty	823,318	40.3%	59.7%	6.7%	1.9%	1.0%	0.2%	4.5%	17.0%	68.7%

Ventura College Students by Race/Ethnicity Fall Terms: 2005 through 2014										
Race or Ethnicity	Fall Term									
	2005	2006	2007	2008	2009	2010	2011	2012	2013	2014
Asian	729	738	771	831	743	888	900	637	654	628
Black (Afro-Am)	281	313	354	366	360	445	514	362	353	310
Hispanic	4,564	4,932	5,315	5,886	6,608	6,171	6,367	7,003	7,148	7,418
Native Amer.	163	164	178	187	108	189	181	71	49	59
Pacific Islander	65	66	73	94	76	87	14	41	34	28
Multi-Ethnic	0	0	0	0	382	758	644	448	484	477
White	5,258	5,400	5,493	5,671	5,645	5,210	5,065	4,411	4,163	3,964
Unknown	955	1,015	1,148	1,229	333	92	78	94	94	105
Total Count	12,015	12,628	13,332	14,264	14,255	13,840	13,763	13,067	12,979	12,989
Race or Ethnicity	Fall Term									
	2005	2006	2007	2008	2009	2010	2011	2012	2013	2014
Asian	6.1%	6.1%	5.8%	5.8%	5.2%	6.4%	6.5%	4.9%	5.0%	4.8%
Black (Afro-Am)	2.3%	2.6%	2.7%	2.6%	2.5%	3.2%	3.7%	2.8%	2.7%	2.4%
Hispanic	38.0%	41.1%	39.9%	41.3%	46.4%	44.6%	46.3%	53.6%	55.1%	57.1%
Native Amer.	1.4%	1.4%	1.3%	1.3%	0.8%	1.4%	1.3%	0.5%	0.4%	0.5%
Pacific Islander	0.5%	0.5%	0.5%	0.6%	0.5%	0.6%	0.1%	0.3%	0.3%	0.2%
Multi-Ethnic	0.0%	0.0%	0.0%	0.0%	2.7%	5.5%	4.7%	3.4%	3.7%	3.7%
White	43.8%	44.9%	41.2%	39.8%	39.6%	37.6%	36.8%	33.8%	32.1%	30.5%
Unknown	7.9%	8.4%	8.6%	8.6%	2.3%	0.7%	0.6%	0.7%	0.7%	0.8%
Total Percent	100.0%	100.0%	100.0%	100.0%	100.0%	100.0%	100.0%	100.0%	100.0%	100.0%

Source: California Community Colleges Chancellor’s Office – Data Mart, Fall Terms: 2005 to 2009
 Ventura County Community College District – Banner Data System, Fall Terms: 2010 to 2014 (4th week census)

IV. FALL TERM ENROLLMENT TRENDS

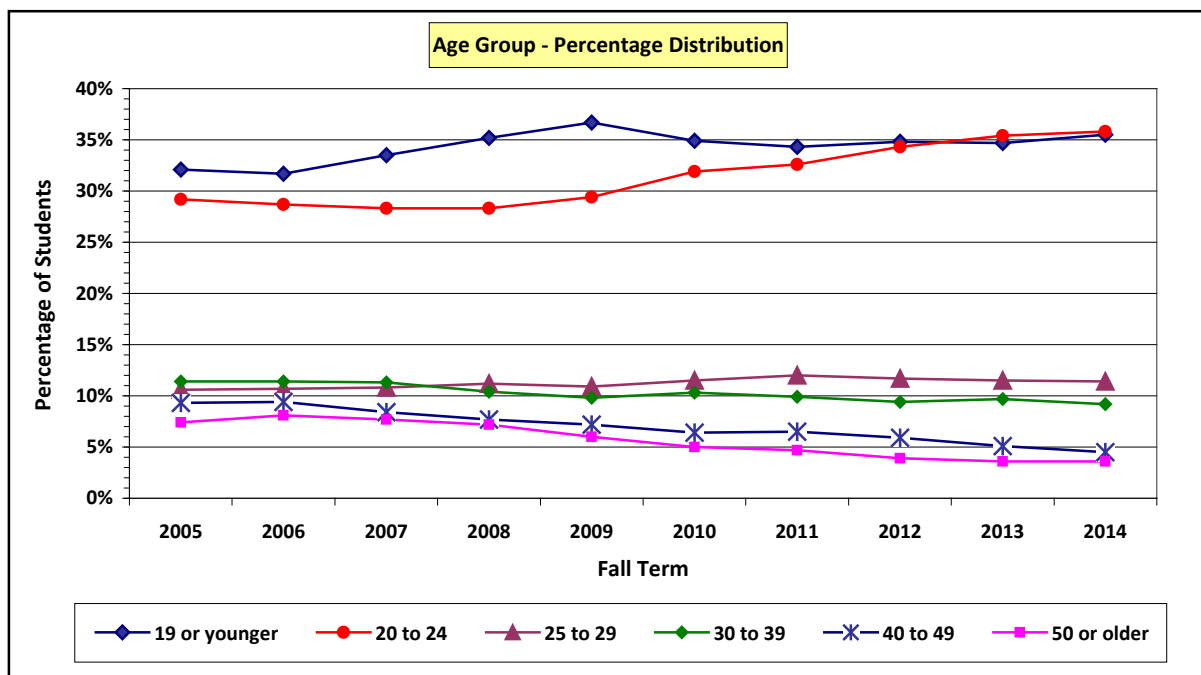
B-2. Race/Ethnicity – Chart



IV. FALL TERM ENROLLMENT TRENDS

B-3. Age Group

Average student age at VC has **decreased** by 4.4 years (15%) from 28.6 in fall 2000 to 24.2 in fall 2014.



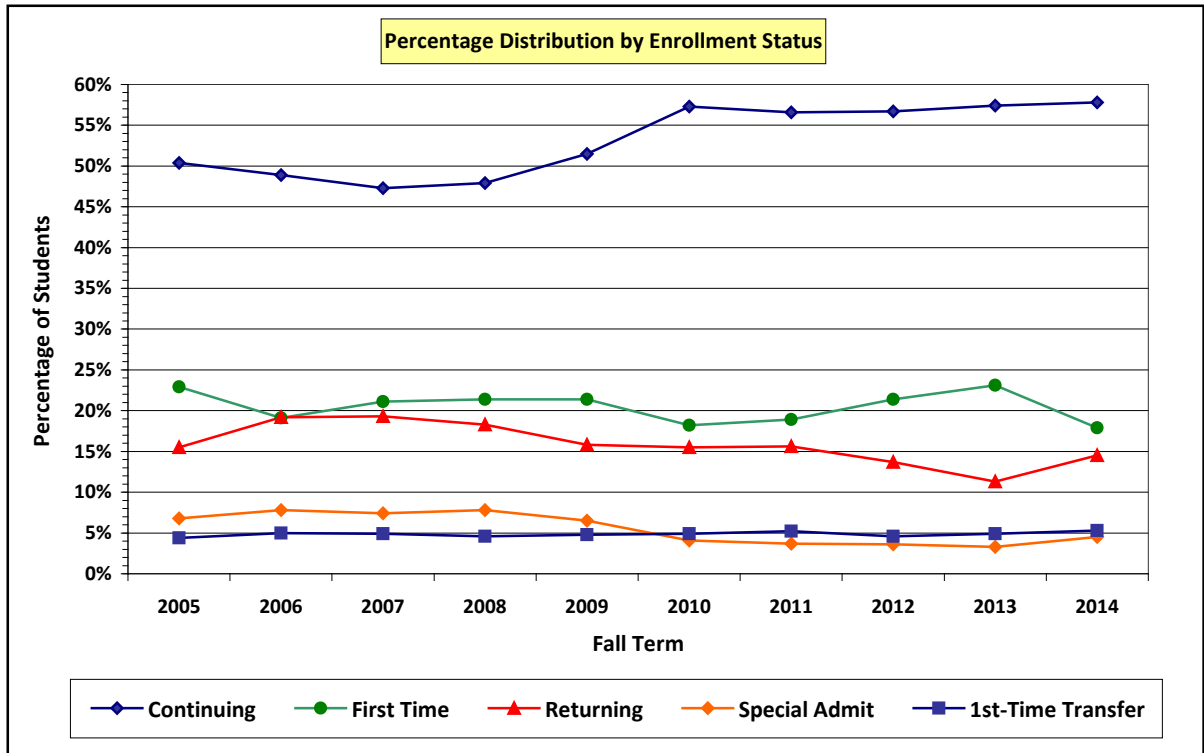
Ventura College Students by Age Group										
Fall Terms: 2005 through 2014										
Age Group (In Years)	Fall Term									
	2005	2006	2007	2008	2009	2010	2011	2012	2013	2014
19 or younger	3,858	3,999	4,473	5,026	5,230	4,835	4,729	4,546	4,505	4,618
20 to 24	3,513	3,628	3,767	4,030	4,187	4,410	4,488	4,487	4,600	4,650
25 to 29	1,278	1,352	1,444	1,597	1,556	1,588	1,653	1,534	1,495	1,489
30 to 39	1,364	1,437	1,505	1,482	1,399	1,424	1,360	1,227	1,252	1,201
40 to 49	1,112	1,189	1,117	1,101	1,021	892	889	770	662	580
50 or older	888	1,019	1,024	1,022	859	691	664	503	465	471
Unreported	2	1	2	6	3	0	0	0	0	0
Total Count	12,015	12,628	13,332	14,264	14,255	13,840	13,763	13,067	12,979	12,989
Average Age	26.1	26.2	26.0	25.7	25.3	25.4	25.3	24.7	24.5	24.2
Age Group (In Years)	Fall Term									
	2005	2006	2007	2008	2009	2010	2011	2012	2013	2014
19 or younger	32.1%	31.7%	33.5%	35.2%	36.7%	34.9%	34.3%	34.8%	34.7%	35.5%
20 to 24	29.2%	28.7%	28.3%	28.3%	29.4%	31.9%	32.6%	34.3%	35.4%	35.8%
25 to 29	10.6%	10.7%	10.8%	11.2%	10.9%	11.5%	12.0%	11.7%	11.5%	11.4%
30 to 39	11.4%	11.4%	11.3%	10.4%	9.8%	10.3%	9.9%	9.4%	9.7%	9.2%
40 to 49	9.3%	9.4%	8.4%	7.7%	7.2%	6.4%	6.5%	5.9%	5.1%	4.5%
50 or older	7.4%	8.1%	7.7%	7.2%	6.0%	5.0%	4.7%	3.9%	3.6%	3.6%
Unreported	0.0%	0.0%	0.0%	0.0%	0.0%	0.0%	0.0%	0.0%	0.0%	0.0%
Total Percent	100.0%	100.0%	100.0%	100.0%	100.0%	100.0%	100.0%	100.0%	100.0%	100.0%

Source: California Community Colleges Chancellor's Office – Data Mart, Fall Terms: 2005 to 2009
Ventura County Community College District – Banner Data System, Fall Terms: 2010 to 2014 (4th week census)

IV. FALL TERM ENROLLMENT TRENDS

B-4. Enrollment Status

The percentage distributions of Ventura College students by enrollment status have remained relatively stable over the last five years. The exception is first-time students, whose relative percentage has dropped from **23%** (3,002 students) in **fall 2013** to **18%** (2,328 students) in **fall 2014**. That is a **decrease** of **674** students or **22%**.



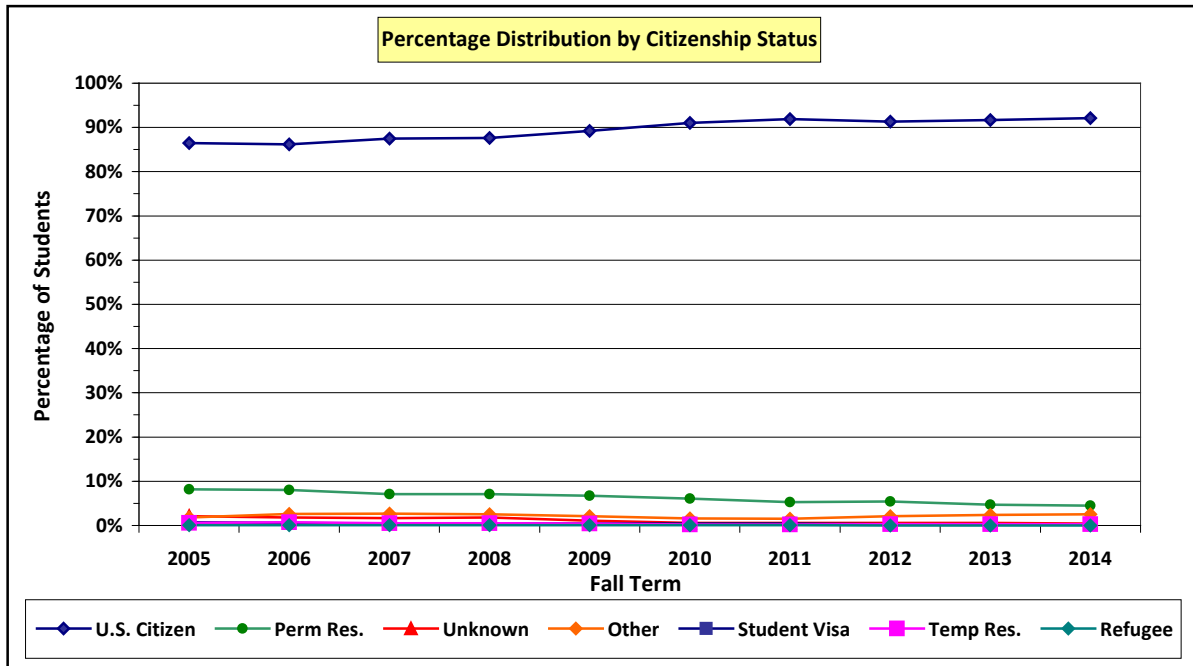
Ventura College Students by Enrollment Status Fall Terms: 2005 through 2014										
Enrollment Status	Fall Term									
	2005	2006	2007	2008	2009	2010	2011	2012	2013	2014
First-Time	2,754	2,418	2,820	3,049	3,054	2,516	2,599	2,793	3,002	2,328
1st-Time Trans	530	626	649	660	690	675	713	596	639	687
Returning	1,863	2,431	2,568	2,614	2,252	2,155	2,150	1,794	1,467	1,887
Continuing	6,057	6,170	6,313	6,829	7,341	7,928	7,791	7,415	7,451	7,510
Special Admit	811	983	982	1,112	918	566	510	469	420	577
Total Count	12,015	12,628	13,332	14,264	14,255	13,840	13,763	13,067	12,979	12,989
Enrollment Status	Fall Term									
	2005	2006	2007	2008	2009	2010	2011	2012	2013	2014
First-Time	22.9%	19.1%	21.1%	21.4%	21.4%	18.2%	18.9%	21.4%	23.1%	17.9%
1st-Time Trans	4.4%	5.0%	4.9%	4.6%	4.8%	4.9%	5.2%	4.6%	4.9%	5.3%
Returning	15.5%	19.2%	19.3%	18.3%	15.8%	15.5%	15.6%	13.7%	11.3%	14.5%
Continuing	50.4%	48.9%	47.3%	47.9%	51.5%	57.3%	56.6%	56.7%	57.4%	57.8%
Special Admit	6.8%	7.8%	7.4%	7.8%	6.5%	4.1%	3.7%	3.6%	3.3%	4.5%
Total Percent	100.0%	100.0%	100.0%	100.0%	100.0%	100.0%	100.0%	100.0%	100.0%	100.0%

Source: California Community Colleges Chancellor's Office – Data Mart, Fall Terms: 2005 to 2009
 Ventura County Community College District – Banner Data System, Fall Terms: 2010 to 2014 (4th week census)

IV. FALL TERM ENROLLMENT TRENDS

B-5. Citizenship Status

In **fall 2014**, almost **97%** of VC students were U.S. Citizens or Permanent Residents, which is about **two** percentage points **higher** than it was in **fall 2005**. The percentage of Permanent Residents is **declining** while the percentage of U.S. Citizens is **increasing**.



Ventura College Students by Citizenship Status Fall Terms: 2005 through 2014										
Citizenship Status	Fall Term									
	2005	2006	2007	2008	2009	2010	2011	2012	2013	2014
U. S. Citizen	10,391	10,881	11,657	12,486	12,712	12,598	12,650	11,933	11,908	11,959
Perm Resident	989	1,017	950	1,018	954	843	732	702	615	586
Temp Resident	65	89	66	69	58	31	25	39	39	39
Refugee	11	10	15	12	16	12	9	2	3	4
Student Visa	87	73	55	61	58	50	52	40	29	22
Other	221	332	363	359	302	219	210	278	307	331
Unknown	251	226	226	259	155	87	85	73	78	48
Total Count	12,015	12,628	13,332	14,264	14,255	13,840	13,763	13,067	12,979	12,989
Citizenship Status	Fall Term									
	2005	2006	2007	2008	2009	2010	2011	2012	2013	2014
U. S. Citizen	86.5%	86.2%	87.5%	87.6%	89.2%	91.0%	91.9%	91.3%	91.7%	92.1%
Perm Resident	8.2%	8.0%	7.1%	7.1%	6.7%	6.1%	5.3%	5.4%	4.7%	4.5%
Temp Resident	0.6%	0.7%	0.5%	0.5%	0.4%	0.2%	0.2%	0.3%	0.3%	0.3%
Refugee	0.1%	0.1%	0.1%	0.1%	0.1%	0.1%	0.1%	0.0%	0.0%	0.0%
Student Visa	0.7%	0.6%	0.4%	0.4%	0.4%	0.4%	0.4%	0.3%	0.3%	0.2%
Other	1.8%	2.6%	2.7%	2.5%	2.1%	1.6%	1.5%	2.1%	2.4%	2.5%
Unknown	2.1%	1.8%	1.7%	1.8%	1.1%	0.6%	0.6%	0.6%	0.6%	0.4%
Total Percent	100.0%	100.0%	100.0%	100.0%	100.0%	100.0%	100.0%	100.0%	100.0%	100.0%

Source: California Community Colleges Chancellor's Office – Data Mart, Fall Terms: 2005 to 2009
Ventura County Community College District – Banner Data System, Fall Terms: 2010 to 2014 (4th week census)

IV. FALL TERM ENROLLMENT TRENDS

B-6. Educational Goal – Data Table

Over the past 15 years, the percentage of VC students declaring an Educational Goal relating to a **degree** or **transfer** (Goals A – D) has **increased** from **28%** in fall 2000 to **78%** in fall 2014. Also, the percentage of Undecided and Unreported (Goals M and X) has **decreased** from **53%** in fall 2000 to **7%** in fall 2014.

Ventura College Students by Educational Goal Fall Terms: 2005 through 2014										
Educational Goal	Fall Term									
	2005	2006	2007	2008	2009	2010	2011	2012	2013	2014
A. AA & Trn	4,172	4,391	4,739	5,348	5,772	6,020	6,799	6,950	7,271	7,461
B. Trn–no AA	1,009	1,042	1,100	1,120	1,161	1,189	1,341	1,306	1,312	1,348
C. AA–no Trn	682	736	832	858	969	1,013	1,186	1,146	1,198	1,232
D. Voc Deg	167	161	158	160	143	134	146	162	187	141
E. Voc Cert	167	144	158	144	151	146	145	144	161	178
F. Career Plan	323	323	322	329	329	294	279	222	174	201
G. Job Skills	438	493	509	487	516	477	440	385	398	355
H. Job Advan	231	298	292	268	218	185	165	165	160	140
I. License	154	165	179	163	214	170	155	110	114	91
J. Ed Develop	458	550	545	492	495	334	274	215	201	207
K. Basic Skills	336	387	427	461	371	312	243	224	185	174
L. HSD Credit	1,038	1,277	1,367	1,648	1,514	1,041	551	371	283	223
M. Undecided	2,540	2,387	2,571	2,586	2,499	2,052	1,646	1,304	1,010	904
N. Take Credit	---	---	3	1	4	5	8	3	3	2
O. 4-yr student	---	---	81	186	198	317	326	313	298	312
X. Unreported	268	247	241	210	200	151	59	47	24	20
Total Count	11,983	12,601	13,524	14,461	14,754	13,840	13,763	13,067	12,979	12,989

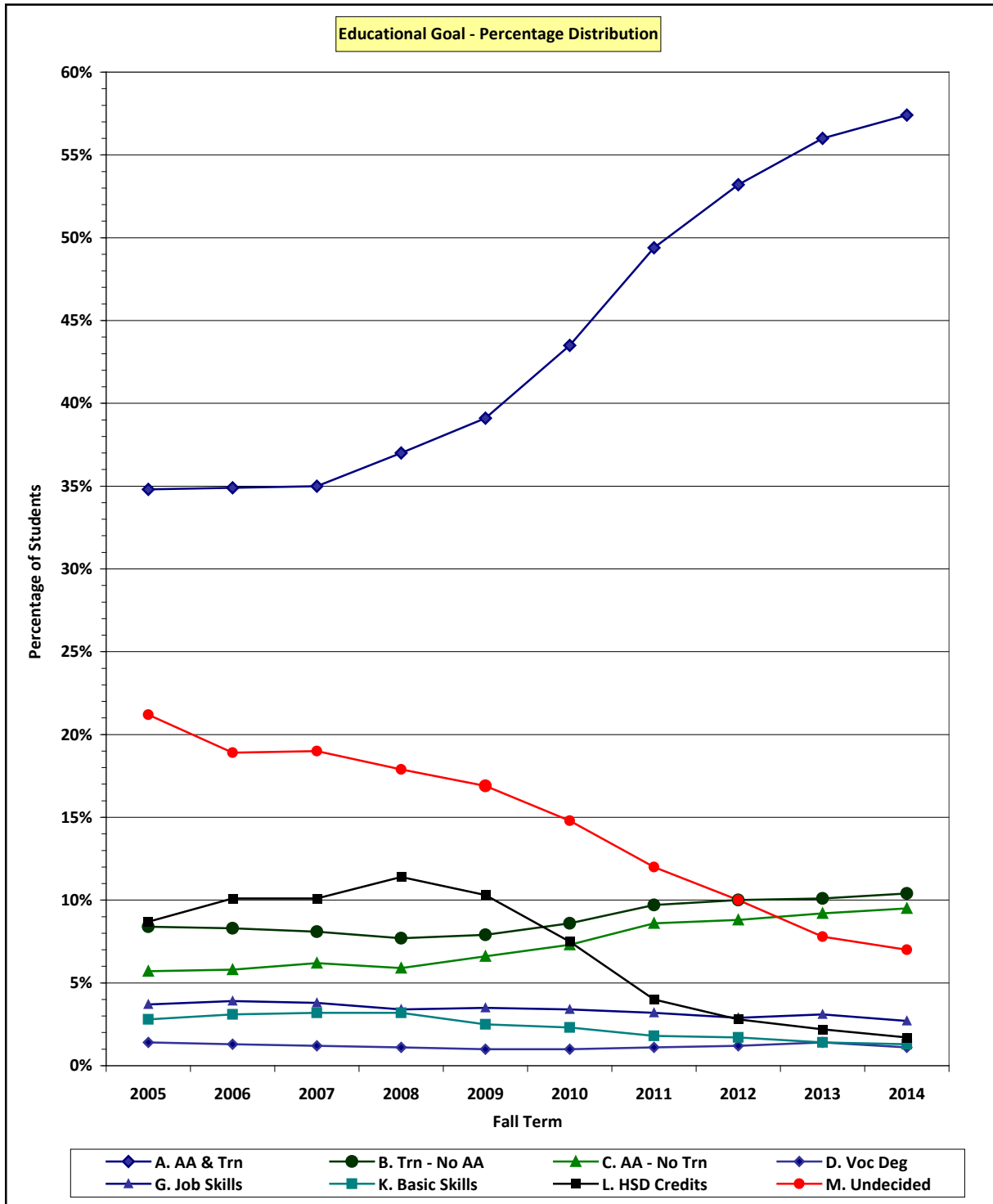
Educational Goal	Fall Term									
	2005	2006	2007	2008	2009	2010	2011	2012	2013	2014
A. AA & Trn	34.8%	34.9%	35.0%	37.0%	39.1%	43.5%	49.4%	53.2%	56.0%	57.4%
B. Trn–no AA	8.4%	8.3%	8.1%	7.7%	7.9%	8.6%	9.7%	10.0%	10.1%	10.4%
C. AA–no Trn	5.7%	5.8%	6.2%	5.9%	6.6%	7.3%	8.6%	8.8%	9.2%	9.5%
D. Voc Deg	1.4%	1.3%	1.2%	1.1%	1.0%	1.0%	1.1%	1.2%	1.4%	1.1%
E. Voc Cert	1.4%	1.1%	1.2%	1.0%	1.0%	1.1%	1.1%	1.1%	1.2%	1.4%
F. Career Plan	2.7%	2.5%	2.4%	2.9%	2.2%	2.1%	2.0%	1.7%	1.3%	1.5%
G. Job Skills	3.7%	3.9%	3.8%	3.4%	3.5%	3.4%	3.2%	2.9%	3.1%	2.7%
H. Job Advan	1.9%	2.4%	2.2%	1.8%	1.5%	1.3%	1.2%	1.3%	1.2%	1.1%
I. License	1.3%	1.3%	1.3%	1.1%	1.5%	1.2%	1.1%	0.8%	0.9%	0.7%
J. Ed Develop	3.8%	4.4%	4.0%	3.4%	3.4%	2.4%	2.0%	1.6%	1.5%	1.6%
K. Basic Skills	2.8%	3.1%	3.2%	3.2%	2.5%	2.3%	1.8%	1.7%	1.4%	1.3%
L. HSD Credit	8.7%	10.1%	10.1%	11.4%	10.3%	7.5%	4.0%	2.8%	2.2%	1.7%
M. Undecided	21.2%	18.9%	19.0%	17.9%	16.9%	14.8%	12.0%	10.0%	7.8%	7.0%
N. Take Credit	---	---	0.0%	0.0%	0.0%	0.0%	0.1%	0.0%	0.0%	0.0%
O. 4-yr student	---	---	0.6%	1.3%	1.3%	2.3%	2.4%	2.4%	2.3%	2.4%
X. Unreported	268%	1.9%	1.9%	1.4%	1.4%	1.1%	0.4%	0.4%	0.2%	0.2%
Total Percent	100.0%	100.0%	100.0%	100.0%	100.0%	100.0%	100.0%	100.0%	100.0%	100.0%

Source: California Community Colleges Chancellor's Office – Data Mart, Fall Terms: 2005 to 2009
 Ventura County Community College District – Banner Data System, Fall Terms: 2010 to 2014 (4th week census)

IV. FALL TERM ENROLLMENT TRENDS

B-6. Educational Goal – Chart

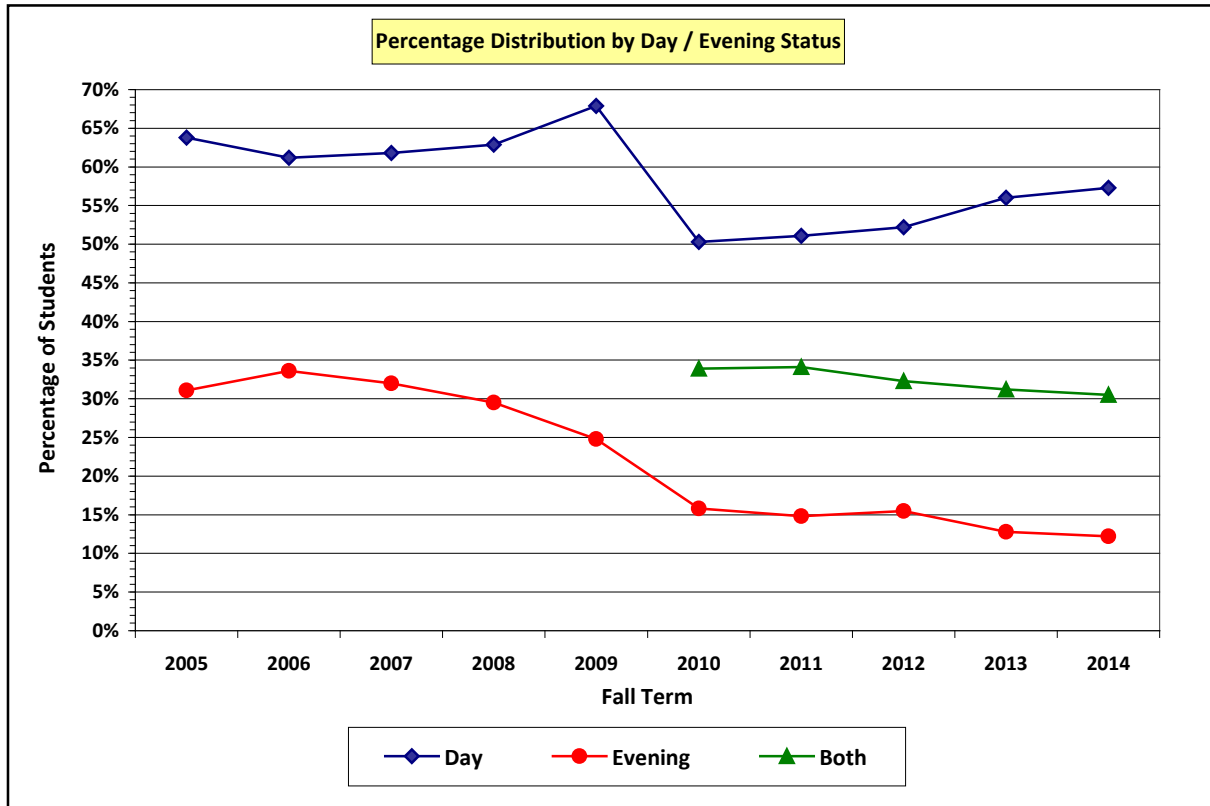
The chart depicts percentage distributions of **eight** of the **16** Educational Goals presented in the data table on the previous page. The goals in the chart relate to **degree and/or transfer** (Goals A – D), **Job Skills**, **Basic Skills**, **Credits for HSD or GED**, and **Undecided**.



IV. FALL TERM ENROLLMENT TRENDS

B-7. Day / Evening Status

Starting in fall 2010, the college district started to classify students as “Day”, “Evening”, or “Both.” Due to the addition of the “Both” category, the percentage of “Day” students has decreased. Prior to fall 2010, if a student was enrolled in both day and evening classes, the student was classified as “Day.” As a result, the percentage of “Evening” students has decreased from 25% (fall 2009) to 12% (fall 2014).



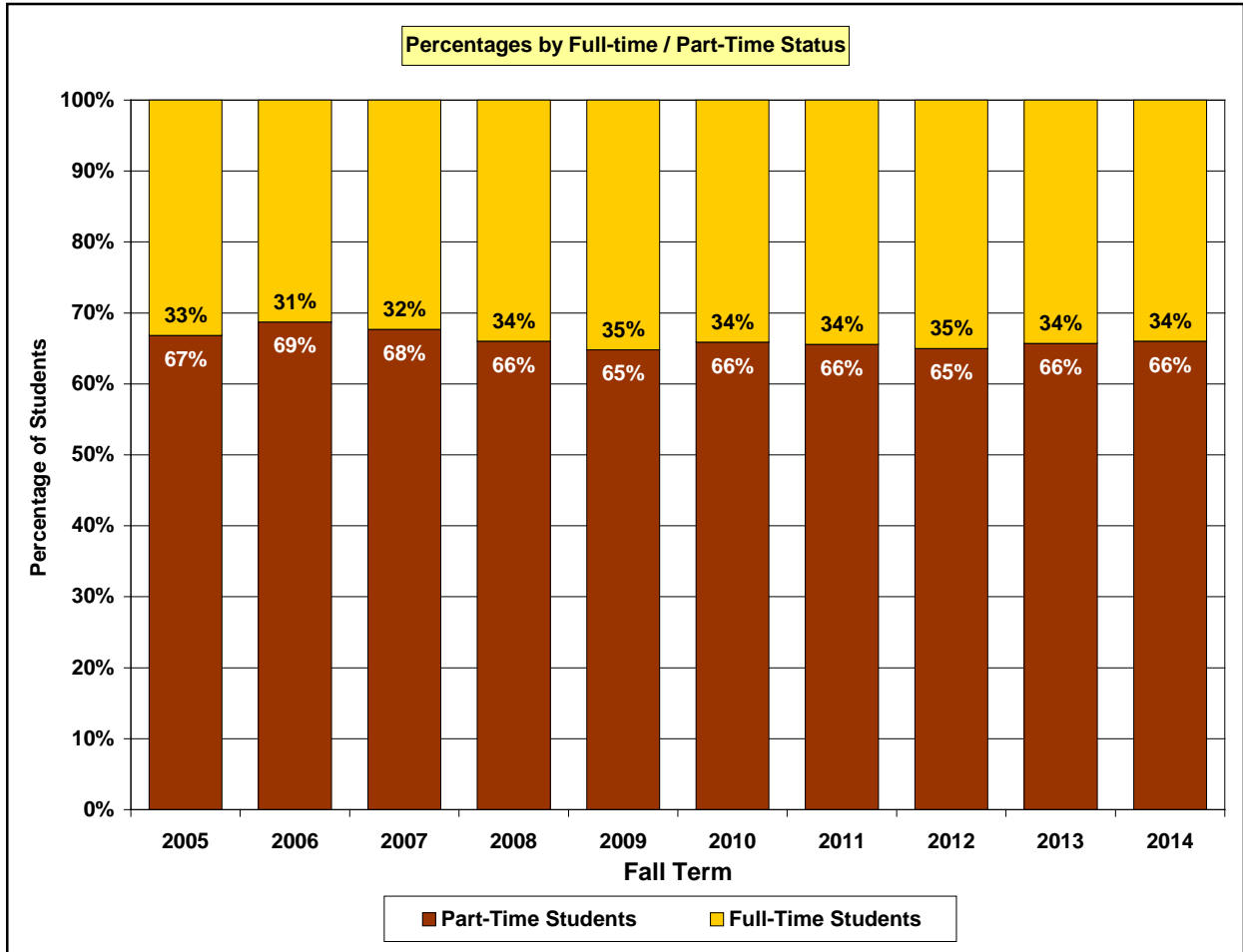
Ventura College Students by Day/Evening Status Fall Terms: 2005 through 2014										
Day/Evening Status	Fall Term									
	2005	2006	2007	2008	2009	2010	2011	2012	2013	2014
Both	---	---	---	---	---	4,685	4,696	4,222	4,051	3,960
Day	7,666	7,733	8,244	8,974	9,677	6,964	7,003	6,814	7,266	7,445
Evening	3,741	4,238	4,263	4,206	3,541	2,191	2,034	2,031	1,662	1,584
Unknown	608	657	825	1,084	1,037	---	---	---	---	---
Total Count	12,015	12,628	13,332	14,264	14,255	13,840	13,763	13,067	12,979	12,989
Day/Evening Status	Fall Term									
	2005	2006	2007	2008	2009	2010	2011	2012	2013	2014
Both	---	---	---	---	---	33.9%	34.1%	32.3%	31.2%	30.5%
Day	63.8%	61.2%	61.8%	62.9%	67.9%	50.3%	51.1%	52.2%	56.0%	57.3%
Evening	31.1%	33.6%	32.0%	29.5%	24.8%	15.8%	14.8%	15.5%	12.8%	12.2%
Unknown	5.1%	5.2%	6.2%	7.6%	7.3%	---	---	---	---	---
Total Percent	100.0%	100.0%	100.0%	100.0%	100.0%	100.0%	100.0%	100.0%	100.0%	100.0%

Source: California Community Colleges Chancellor’s Office – Data Mart, Fall Terms: 2005 to 2009
Ventura County Community College District – Banner Data System, Fall Terms: 2010 to 2014 (4th week census)

IV. FALL TERM ENROLLMENT TRENDS

B-8. Full-Time / Part-Time Status

Since fall 2008, the percentage of VC students classified as Full-Time has been between 34% and 35%. In fall 2014, full-time students accounted for 34% of students; 66% were enrolled part-time.



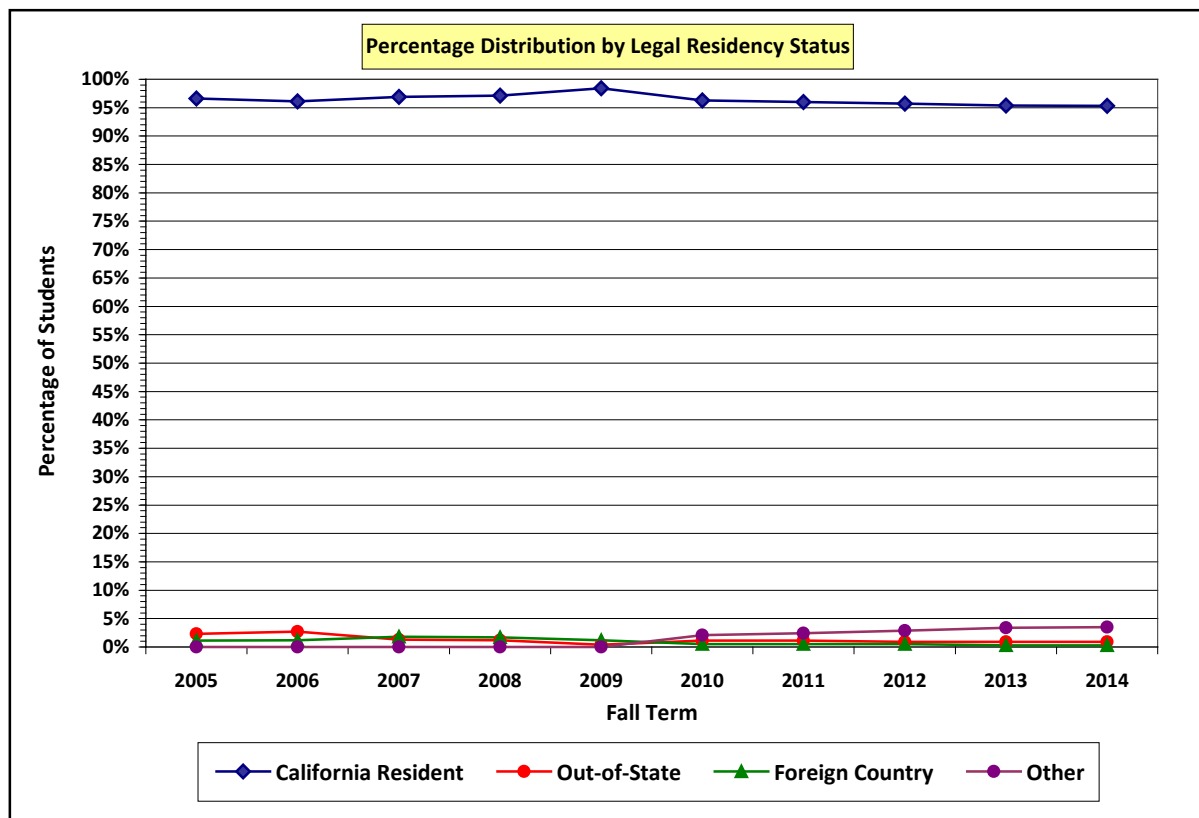
Ventura College Students by Full-Time/Part-Time Status										
Fall Terms: 2005 through 2014										
Full-Time or Part-Time	Fall Term									
	2005	2006	2007	2008	2009	2010	2011	2012	2013	2014
Full-Time	4,029	3,935	4,308	4,846	5,015	4,718	4,741	4,578	4,446	4,410
Part-Time	7,986	8,693	9,024	9,418	9,240	9,122	9,022	8,489	8,533	8,579
Total Count	12,015	12,628	13,332	14,264	14,255	13,840	13,763	13,067	12,979	12,989
Full-Time or Part-Time	Fall Term									
	2005	2006	2007	2008	2009	2010	2011	2012	2013	2014
Full-Time	33.5%	31.2%	32.3%	34.0%	35.2%	34.1%	34.5%	35.0%	34.3%	34.0%
Part-Time	66.5%	68.6%	67.7%	66.0%	64.8%	65.9%	65.5%	65.0%	65.7%	66.0%
Total Percent	100.0%	100.0%	100.0%	100.0%	100.0%	100.0%	100.0%	100.0%	100.0%	100.0%

Source: California Community Colleges Chancellor's Office – Data Mart, Fall Terms: 2005 to 2009
 Ventura County Community College District – Banner Data System, Fall Terms: 2010 to 2014 (4th week census)

IV. FALL TERM ENROLLMENT TRENDS

B-9. Legal Residency Status

Over **95%** of students attending Ventura College in the past 10 years were Legal Residents of California.



Ventura College Students by Legal Residency Status Fall Terms: 2005 through 2014										
Legal Residency	Fall Term									
	2005	2006	2007	2008	2009	2010	2011	2012	2013	2014
California	11,601	12,142	12,925	13,856	14,027	13,333	13,222	12,509	12,382	12,378
Out-of-State	278	336	172	168	52	149	151	122	119	112
Foreign Country	136	150	235	240	176	71	62	60	38	33
Other	---	---	---	---	---	283	326	376	440	464
Unknown	0	0	0	0	0	3	1	0	0	2
Total Count	12,015	12,628	13,332	14,264	14,255	13,840	13,763	13,067	12,979	12,989
Legal Residency	Fall Term									
	2005	2006	2007	2008	2009	2010	2011	2012	2013	2014
California	96.6%	96.1%	96.9%	97.1%	98.4%	96.3%	96.0%	95.7%	95.4%	95.3%
Out-of-State	2.3%	2.7%	1.3%	1.2%	0.4%	1.1%	1.1%	0.9%	0.9%	0.9%
Foreign Country	1.1%	1.2%	1.8%	1.7%	1.2%	0.5%	0.5%	0.5%	0.3%	0.3%
Other	---	---	---	---	---	2.1%	2.4%	2.9%	3.4%	3.5%
Unknown	0.0%	0.0%	0.0%	0.0%	0.0%	0.0%	0.0%	0.0%	0.0%	0.0%
Total Percent	100.0%	100.0%	100.0%	100.0%	100.0%	100.0%	100.0%	100.0%	100.0%	100.0%

Source: California Community Colleges Chancellor's Office – Data Mart, Fall Terms: 2005 to 2009
Ventura County Community College District – Banner Data System, Fall Terms: 2010 to 2014 (4th week census)

IV. FALL TERM ENROLLMENT TRENDS

B-10. Ventura County Residents Attending VC – Data Table

The data in this table indicate the numbers of VC students who were legal residents of California and who also resided in Ventura County (excluded from the table are international students, out-of-state students, and students from other California counties). Students are distributed according to the cities/areas in which they resided. Over the decade, the cities/areas in which the highest percentages of VC students resided have been: Ventura, Oxnard, Santa Paula, and Camarillo.

It is worth noting that: (a) the number and percentage of VC students residing in Oxnard in **fall 2014 exceeds** the number and percentage of VC students living in Ventura, and (b) the percentage of students residing in the Oxnard Plain (Oxnard and Port Hueneme) has **increased** from **22%** (2000) to **35%** (2014).

A chart with the percentages of VC students by Ventura County cities/areas is presented on the next page.

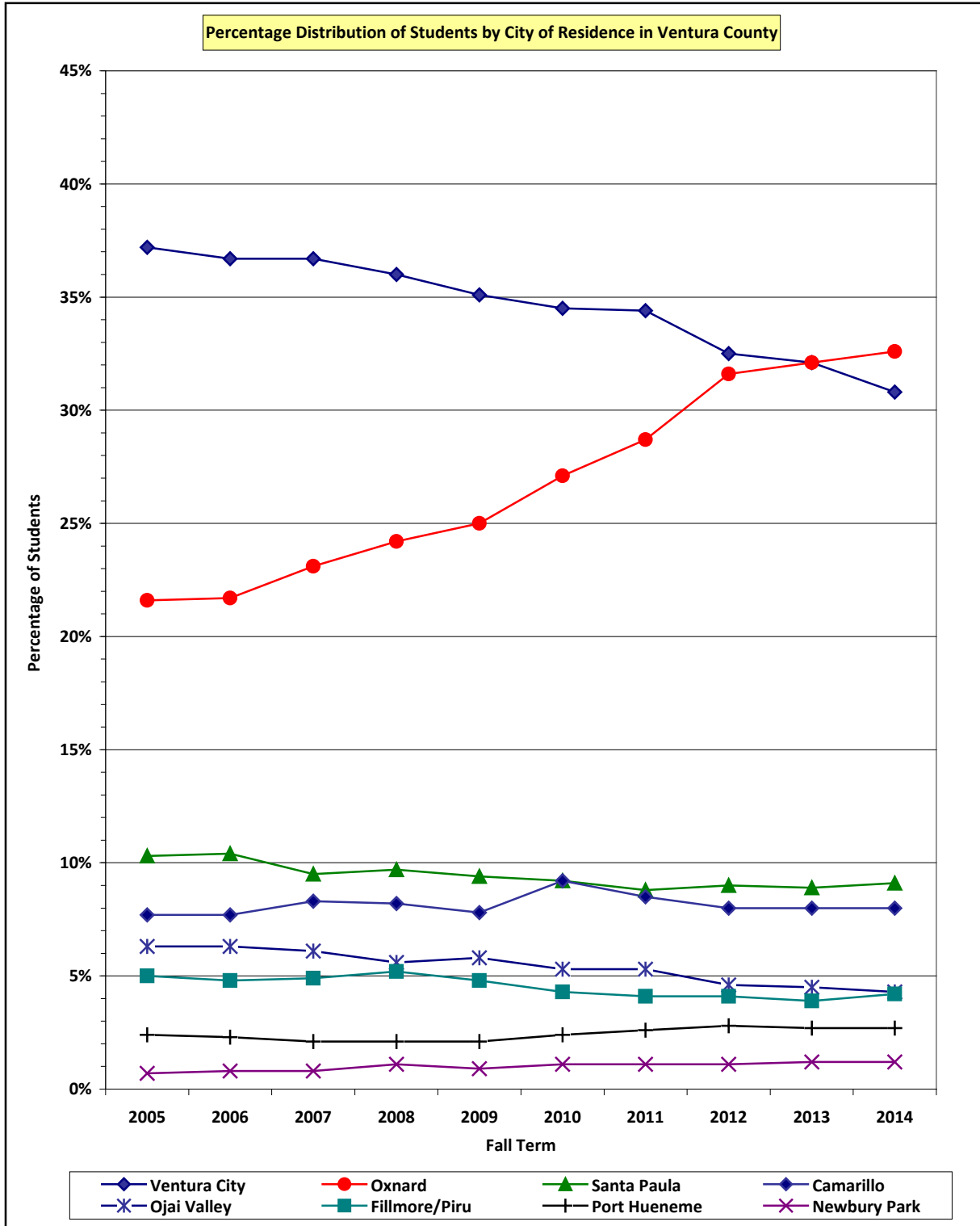
Ventura College										
Students Who were Residents of Ventura County										
Fall Terms: 2005 through 2014										
California Resident	Fall Term									
	2005	2006	2007	2008	2009	2010	2011	2012	2013	2014
Camarillo	919	980	1,106	1,176	1,116	1,269	1,169	1,045	1,043	1,035
Fillmore/Piru	602	605	654	746	686	601	569	538	501	551
Moorpark	47	53	49	59	59	75	70	64	79	94
Newbury Park	81	100	112	152	129	151	155	140	150	157
Ojai Valley	758	793	817	795	828	738	729	599	589	556
Oxnard	2,593	2,738	3,074	3,457	3,568	3,750	3,947	4,128	4,161	4,229
Port Hueneme	293	288	282	299	298	328	359	372	345	356
Santa Paula	1,242	1,314	1,262	1,387	1,335	1,270	1,211	1,181	1,153	1,180
Simi Valley	69	73	86	101	94	145	121	121	165	191
Thousnd Oaks	85	91	90	99	114	135	153	139	131	152
Ventura City	4,469	4,639	4,894	5,135	5,000	4,780	4,739	4,248	4,171	3,997
Ventura Cnty	11,158	11,674	12,426	13,406	13,227	13,242	13,222	12,575	12,488	12,498
All Others	857	954	906	858	998	598	541	492	491	491
Total Student	12,015	12,628	13,332	14,264	14,225	13,840	13,763	13,067	12,979	12,989
California Resident	Fall Term									
	2005	2006	2007	2008	2009	2010	2011	2012	2013	2014
Camarillo	7.7%	7.7%	8.3%	8.2%	7.8%	9.2%	8.5%	8.0%	8.0%	8.0%
Fillmore/Piru	5.0%	4.8%	4.9%	5.2%	4.8%	4.3%	4.1%	4.1%	3.9%	4.2%
Moorpark	0.4%	0.4%	0.4%	0.4%	0.4%	0.5%	0.5%	0.5%	0.6%	0.7%
Newbury Park	0.7%	0.8%	0.8%	1.1%	0.9%	1.1%	1.1%	1.1%	1.2%	1.2%
Ojai Valley	6.3%	6.3%	6.1%	5.6%	5.8%	5.3%	5.3%	4.6%	4.5%	4.3%
Oxnard	21.6%	21.7%	23.1%	24.2%	25.0%	27.1%	28.7%	31.6%	32.1%	32.6%
Port Hueneme	2.4%	2.3%	2.1%	2.1%	2.1%	2.4%	2.6%	2.8%	2.7%	2.7%
Santa Paula	10.3%	10.4%	9.5%	9.7%	9.4%	9.2%	8.8%	9.0%	8.9%	9.1%
Simi Valley	0.6%	0.6%	0.7%	0.7%	0.7%	1.0%	0.9%	0.9%	1.3%	1.5%
Thousnd Oaks	0.7%	0.7%	0.7%	0.7%	0.8%	1.0%	1.1%	1.1%	1.0%	1.2%
Ventura City	37.2%	36.7%	36.7%	36.0%	35.1%	34.5%	34.4%	32.5%	32.1%	30.8%
Ventura Cnty	92.9%	92.5%	93.2%	94.0%	92.8%	95.7%	96.1%	96.2%	96.2%	96.2%
All Others	7.1%	7.5%	6.8%	6.0%	7.2%	4.3%	3.9%	3.8%	3.8%	3.8%
Total Percent	100.0%	100.0%	100.0%	100.0%	100.0%	100.0%	100.0%	100.0%	100.0%	100.0%

Source: California Community Colleges Chancellor's Office – Data Mart, Fall Terms: 2005 to 2009
 Ventura County Community College District – Banner Data System, Fall Terms: 2010 to 2014 (4th week census)

IV. FALL TERM ENROLLMENT TRENDS

B-10. Ventura County Residents Attending VC – Chart

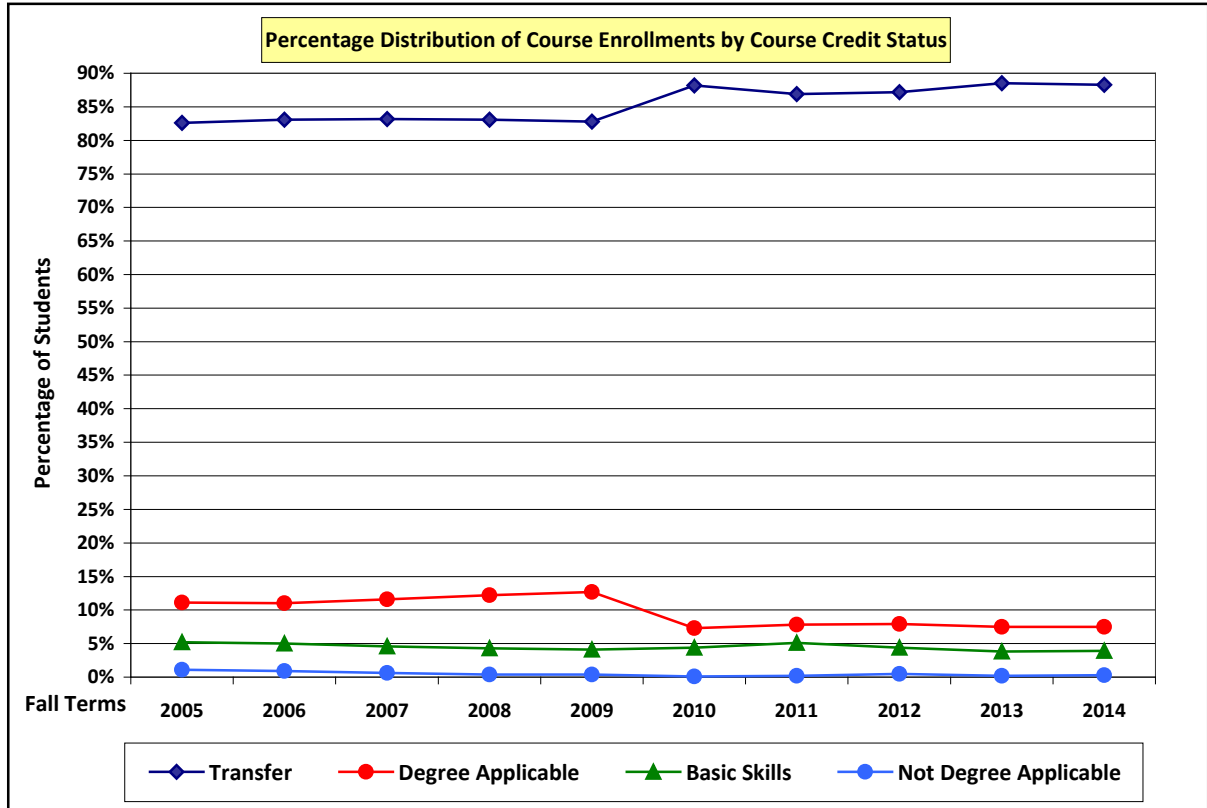
Percentage distributions for VC students residing in the top **eight** cities/areas in Ventura County are depicted in the following chart. Percentages for cities/areas are graphed for fall terms 2005 through 2014.



IV. FALL TERM ENROLLMENT TRENDS

C-1. Course Enrollments – By Credit Status

Over the decade, the percentage of **transfer-level** courses at VC has increased by **five** percentage points, from **83%** to **88%**. Percentages in the other three classifications have all declined.



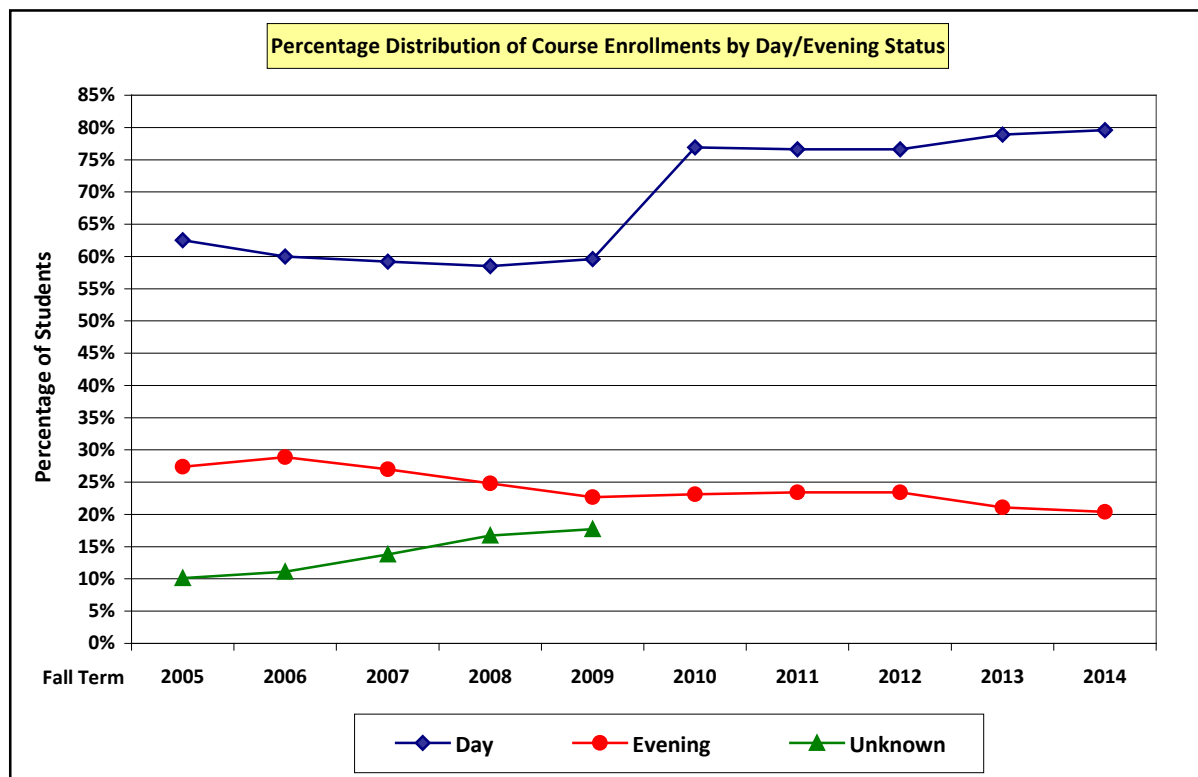
Ventura College										
Course Enrollments (Seatcounts) by Credit Status										
Fall Terms: 2009 through 2014										
Credit Status	Fall Term									
	2005	2006	2007	2008	2009	2010	2011	2012	2013	2014
Transfer	25,729	26,355	29,137	32,036	32,849	33,049	32,560	31,288	31,578	31,454
Degree Applic.	3,464	3,494	4,082	4,705	5,031	2,741	2,911	2,845	2,662	2,666
Not Deg. App.	330	270	214	178	150	37	80	159	86	101
Basic Skills	1,633	1,586	1,596	1,653	1,648	1,629	1,933	1,577	1,351	1,411
Tot. Seatcount	31,156	31,705	35,029	38,572	39,678	37,456	37,484	35,869	35,677	35,632
Credit Status	Fall Term									
	2005	2006	2007	2008	2009	2010	2011	2012	2013	2014
Transfer	82.6%	83.1%	83.2%	83.1%	82.8%	88.2%	86.9%	87.2%	88.5%	88.3%
Degree Applic.	11.1%	11.0%	11.6%	12.2%	12.7%	7.3%	7.8%	7.9%	7.5%	7.5%
Not Deg. App.	1.1%	0.9%	0.6%	0.4%	0.4%	0.1%	0.2%	0.5%	0.2%	0.3%
Basic Skills	5.2%	5.0%	4.6%	4.3%	4.1%	4.4%	5.1%	4.4%	3.8%	3.9%
Total Percent	100.0%	100.0%	100.0%	100.0%	100.0%	100.0%	100.0%	100.0%	100.0%	100.0%

Source: California Community Colleges Chancellor's Office – Data Mart, Fall Terms: 2005 to 2009
 Ventura County Community College District – Banner Data System, Fall Terms: 2010 to 2014 (Final grades)

IV. FALL TERM ENROLLMENT TRENDS

C-2. Course Enrollments – By Day / Evening Status

The percentages of **Day** sections are increasing as a result of “distance education” sections being coded “day” rather than **Unknown**.



Notes on the Coding of Day/Evening Status:

- Classes are coded “Unknown” if (a) they have irregular meeting times or (b) they are TBA (*to be arranged*).
- Classes that meet exclusively on Saturday and/or Sunday are coded as “Evening.”
- Prior to fall 2010, most Distance Education classes were coded “Unknown.”

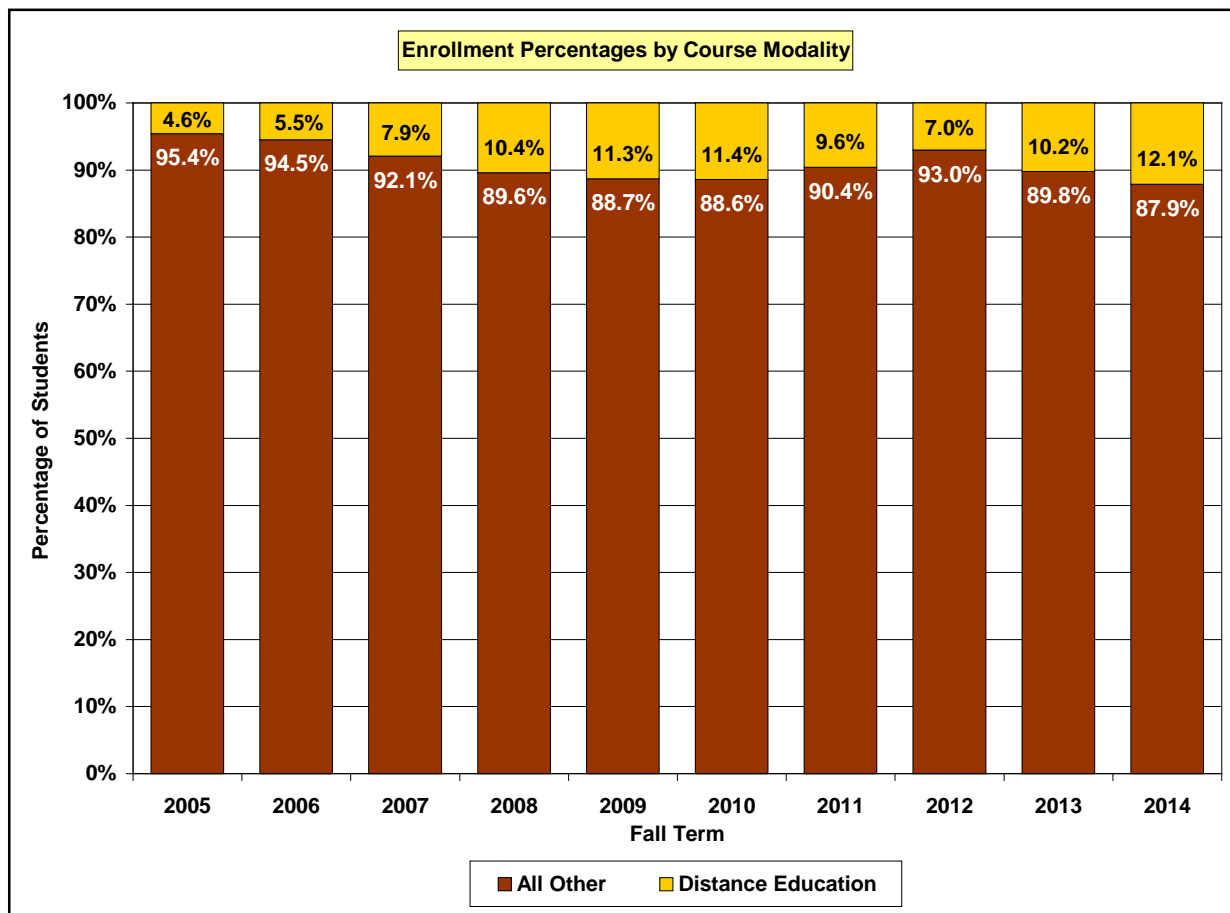
Ventura College – Course Enrollments (Seatcounts) by Day/Evening Designation										
Fall Terms: 2005 through 2014										
Day/Evening Designation	Fall Term									
	2005	2006	2007	2008	2009	2010	2011	2012	2013	2014
Day	19,453	19,041	20,751	22,562	23,633	28,816	28,715	27,465	28,141	28,363
Evening	8,545	9,153	9,440	9,572	9,032	8,640	8,769	8,404	7,536	7,269
Unknown	3,158	3,511	4,838	6,438	7,013	---	---	---	---	---
Tot. Seatcount	31,156	31,705	35,029	38,572	39,678	37,456	37,484	35,869	35,677	35,632
Day/Evening Designation	Fall Term									
	2005	2006	2007	2008	2009	2010	2011	2012	2013	2014
Day	62.5%	60.0%	59.2%	58.5%	59.6%	76.9%	76.6%	76.6%	78.9%	79.6%
Evening	27.4%	28.9%	27.0%	24.8%	22.7%	23.1%	23.4%	23.4%	21.1%	20.4%
Unknown	10.1%	11.1%	13.8%	16.7%	17.7%	---	---	---	---	---
Total Percent	100.0%	100.0%	100.0%	100.0%	100.0%	100.0%	100.0%	100.0%	100.0%	100.0%

Source: California Community Colleges Chancellor's Office – Data Mart, Fall Terms: 2005 to 2009
Ventura County Community College District – Banner Data System, Fall Terms: 2010 to 2014 (Final grades)

IV. FALL TERM ENROLLMENT TRENDS

C-3. Course Enrollments – Distance Education

Enrollments in “distance education” classes have grown from 5% of all course enrollments in fall 2005 to 12% in fall 2014.



Ventura College – Course Enrollments (Seatcounts) by Mode of Delivery Fall Terms: 2005 through 2014										
Mode of Delivery	Fall Term									
	2005	2006	2007	2008	2009	2010	2011	2012	2013	2014
Distance Ed	1,430	1,736	2,778	3,996	4,477	4,264	3,606	2,504	3,635	4,300
All Other	29,726	29,969	32,251	34,576	35,201	33,192	33,878	33,365	32,042	31,332
Tot. Seatcount	31,156	31,705	35,029	38,572	39,678	37,456	37,484	35,869	35,677	35,632
Mode of Delivery	Fall Term									
	2005	2006	2007	2008	2009	2010	2011	2012	2013	2014
Distance Ed	4.6%	5.5%	7.9%	10.4%	11.3%	11.4%	9.6%	7.0%	10.2%	12.1%
All Other	95.4%	94.5%	92.1%	89.6%	88.7%	88.6%	90.4%	93.0%	89.8%	87.9%
Total Percent	100.0%	100.0%	100.0%	100.0%	100.0%	100.0%	100.0%	100.0%	100.0%	100.0%

Source: California Community Colleges Chancellor’s Office – Data Mart, Fall Terms: 2005 to 2009
Ventura County Community College District – Banner Data System, Fall Terms: 2010 to 2014 (Final grades)