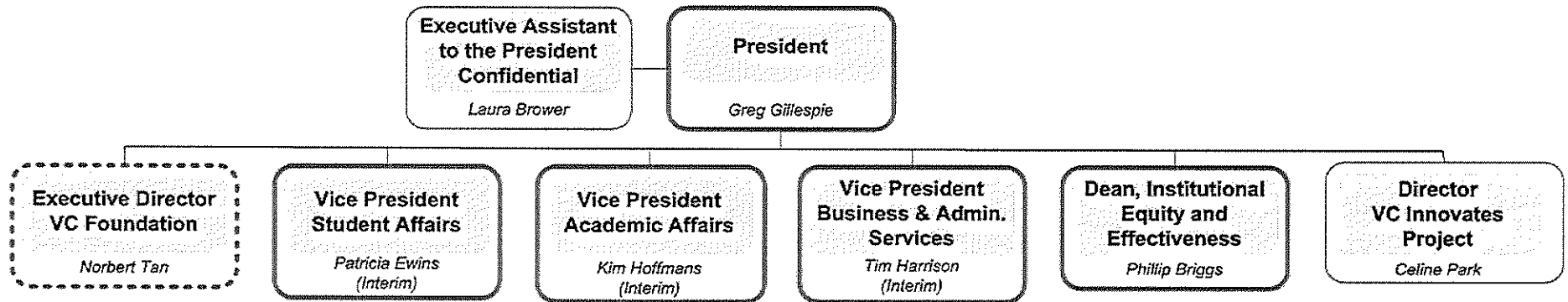
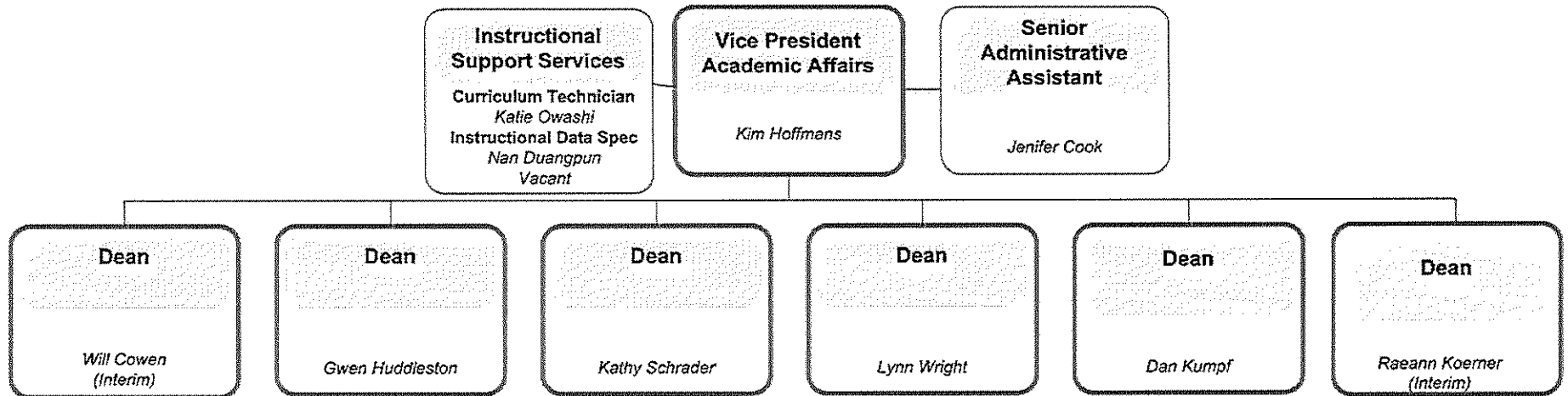


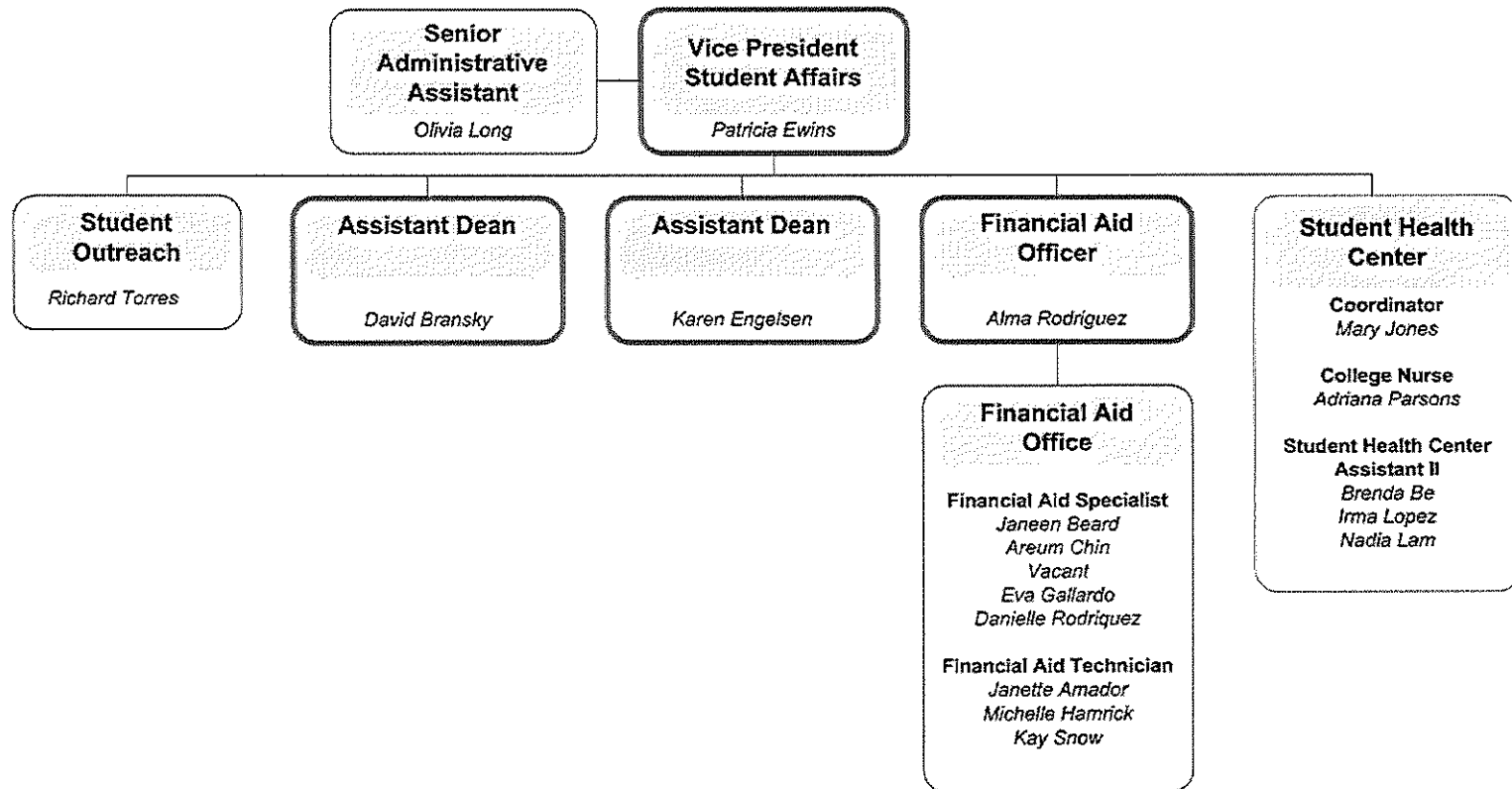
Ventura College – President’s Office



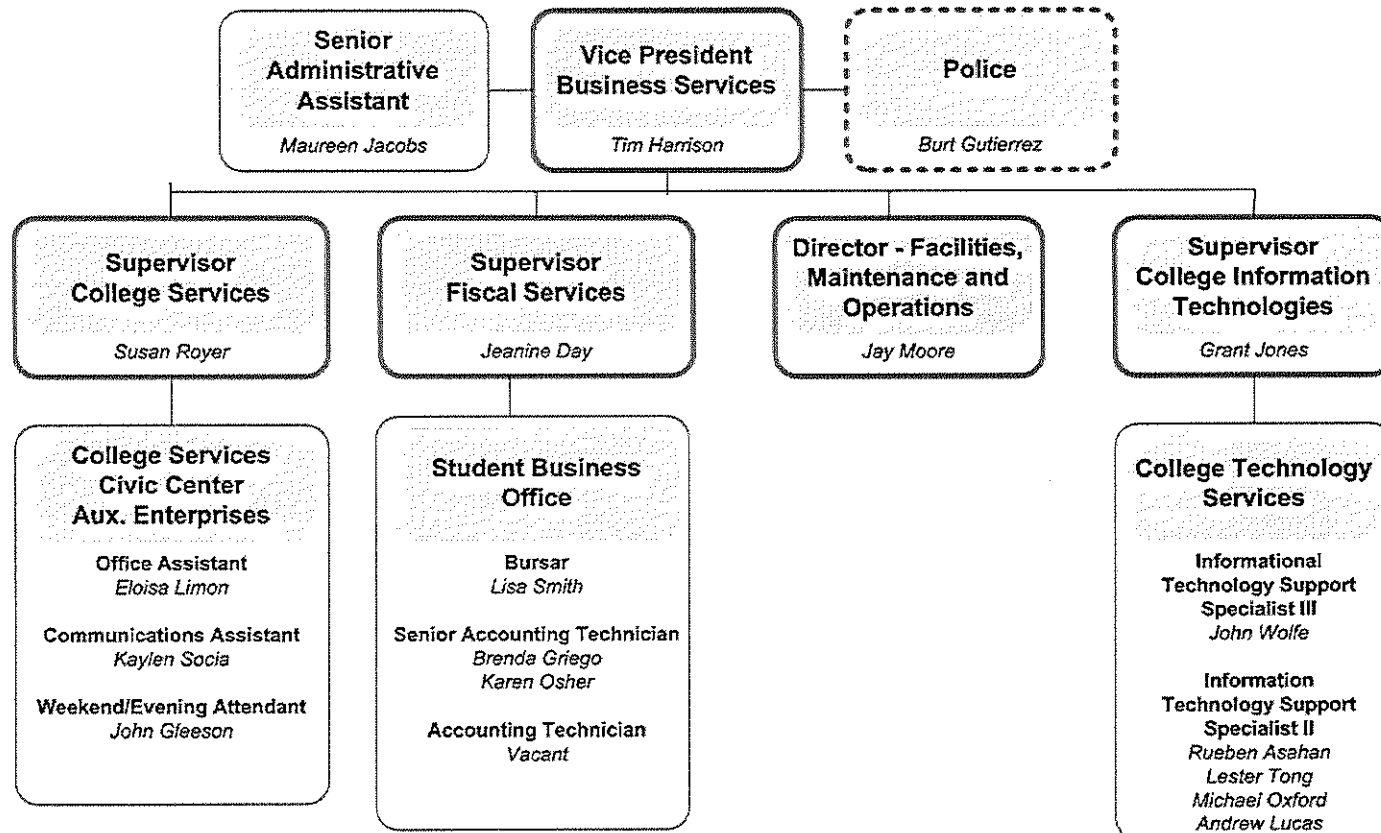
Ventura College – VP Academic Affairs



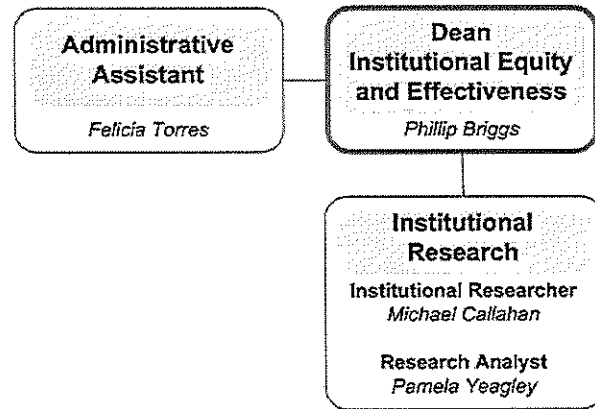
Ventura College – VP Student Affairs



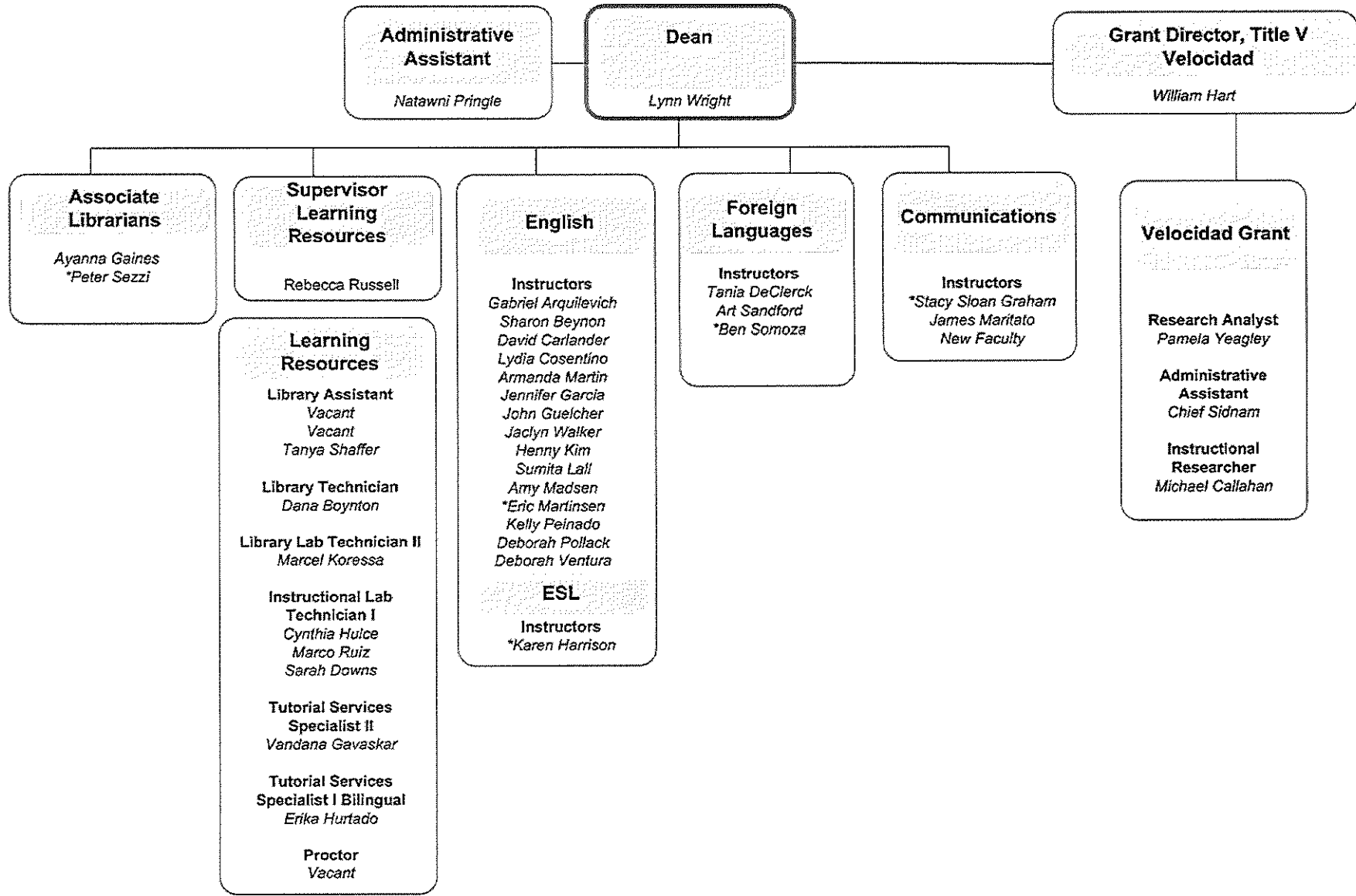
Ventura College – VP Business and Administrative Services



Ventura College – Institutional Equity & Effectiveness

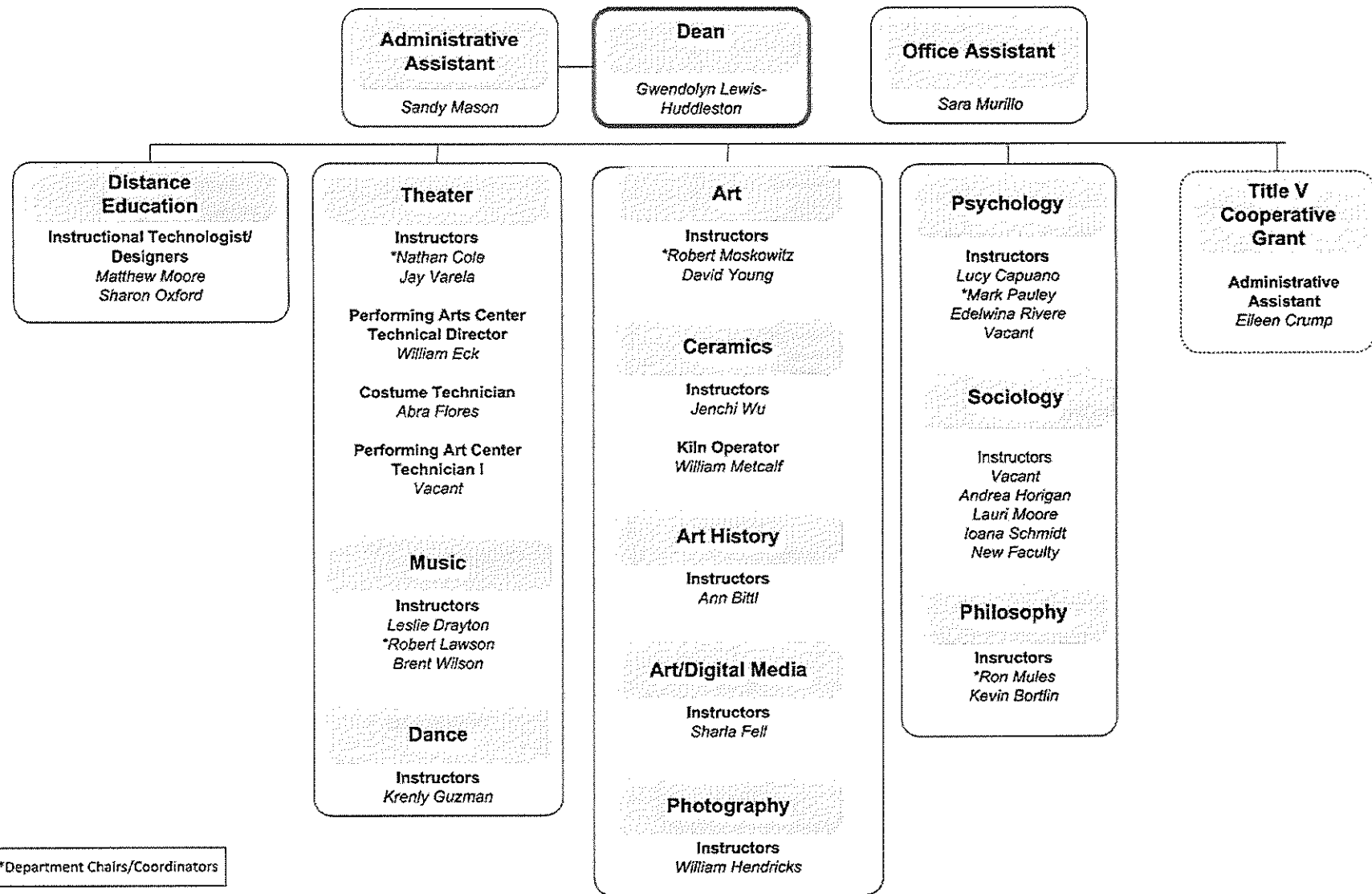


Ventura College – English, Comm., Learning Resources

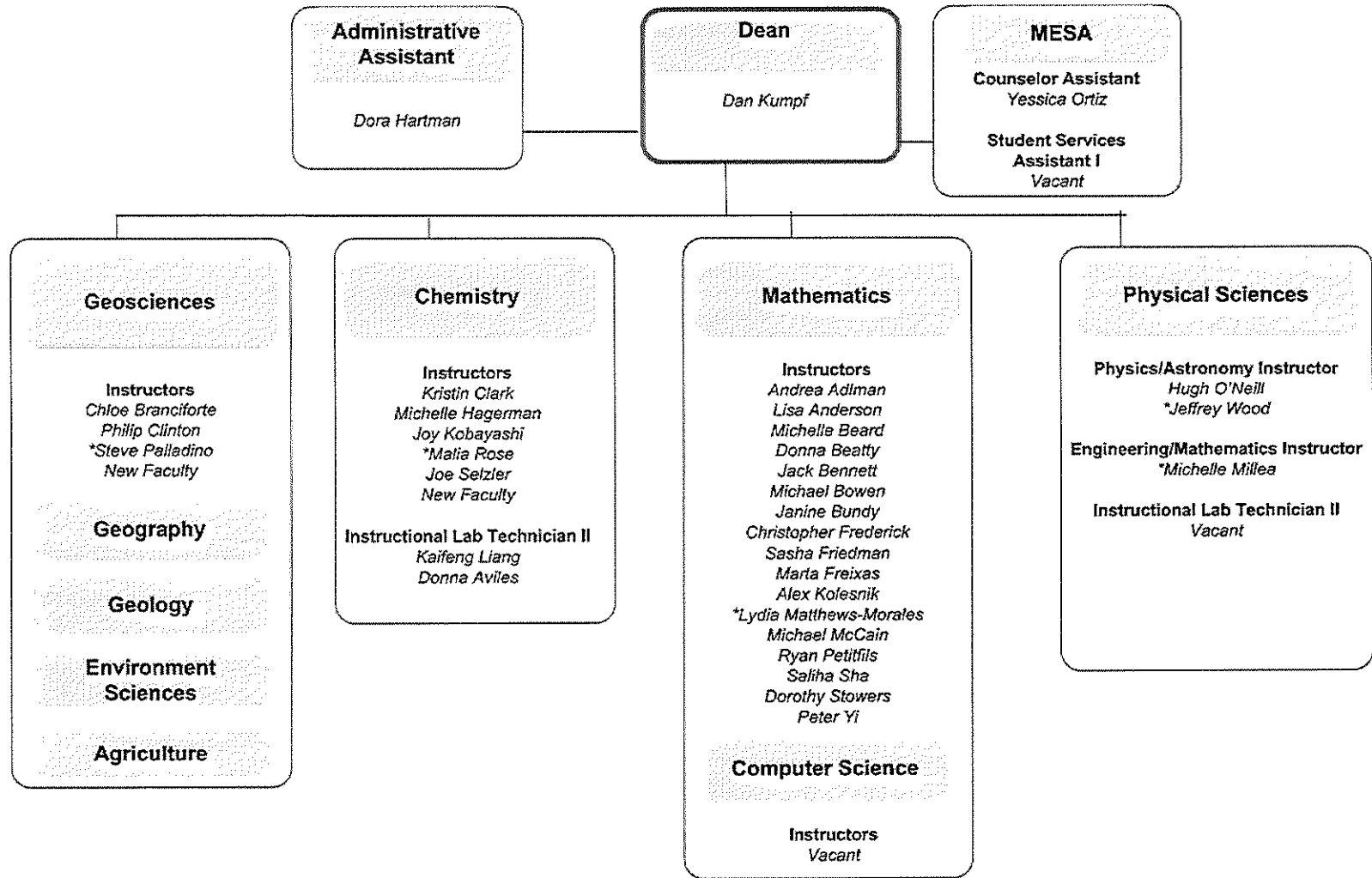


*Department Chairs/Coordinators

Ventura College – Social & Behavioral Sciences, Arts and Humanities Division

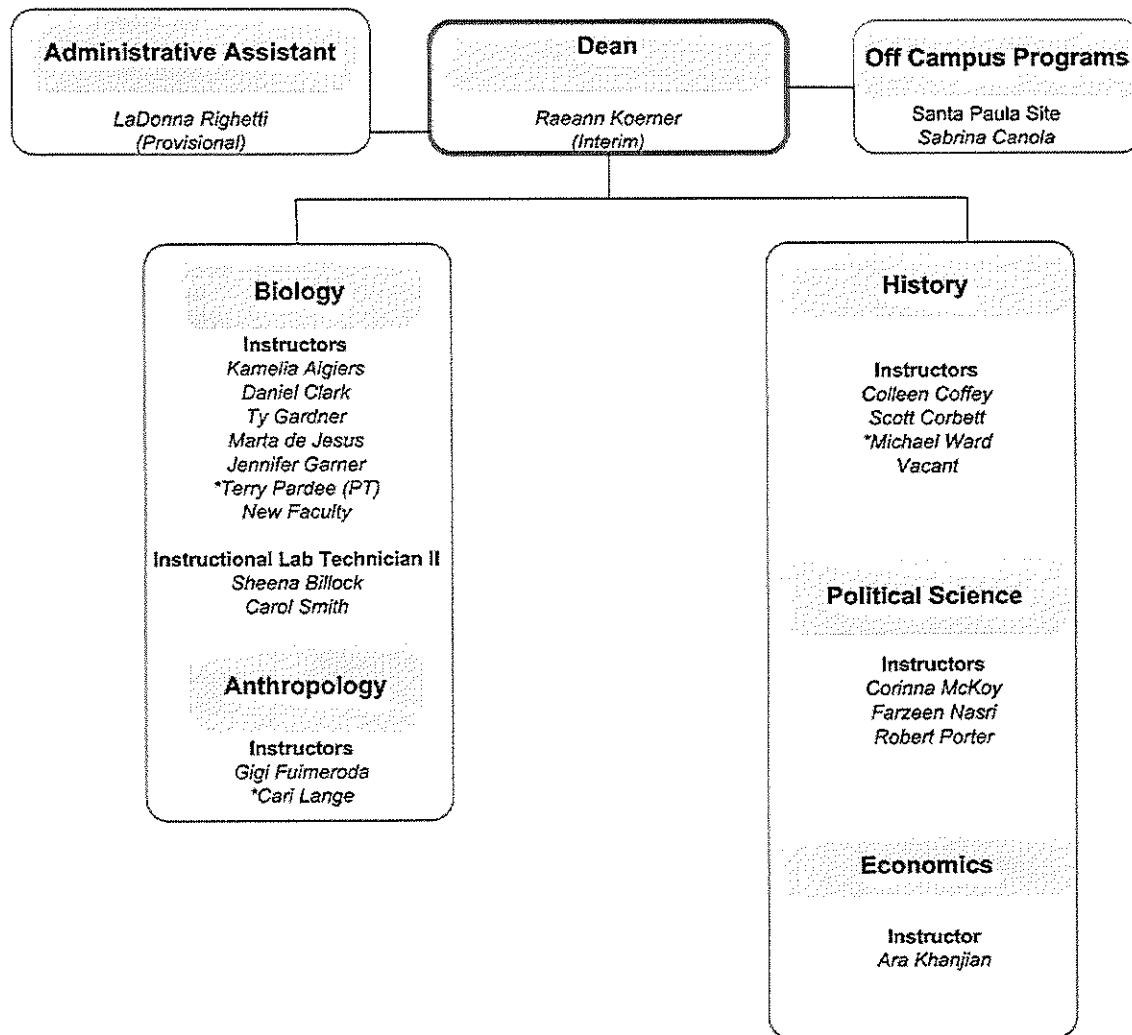


Ventura College – Sciences and Mathematics Division



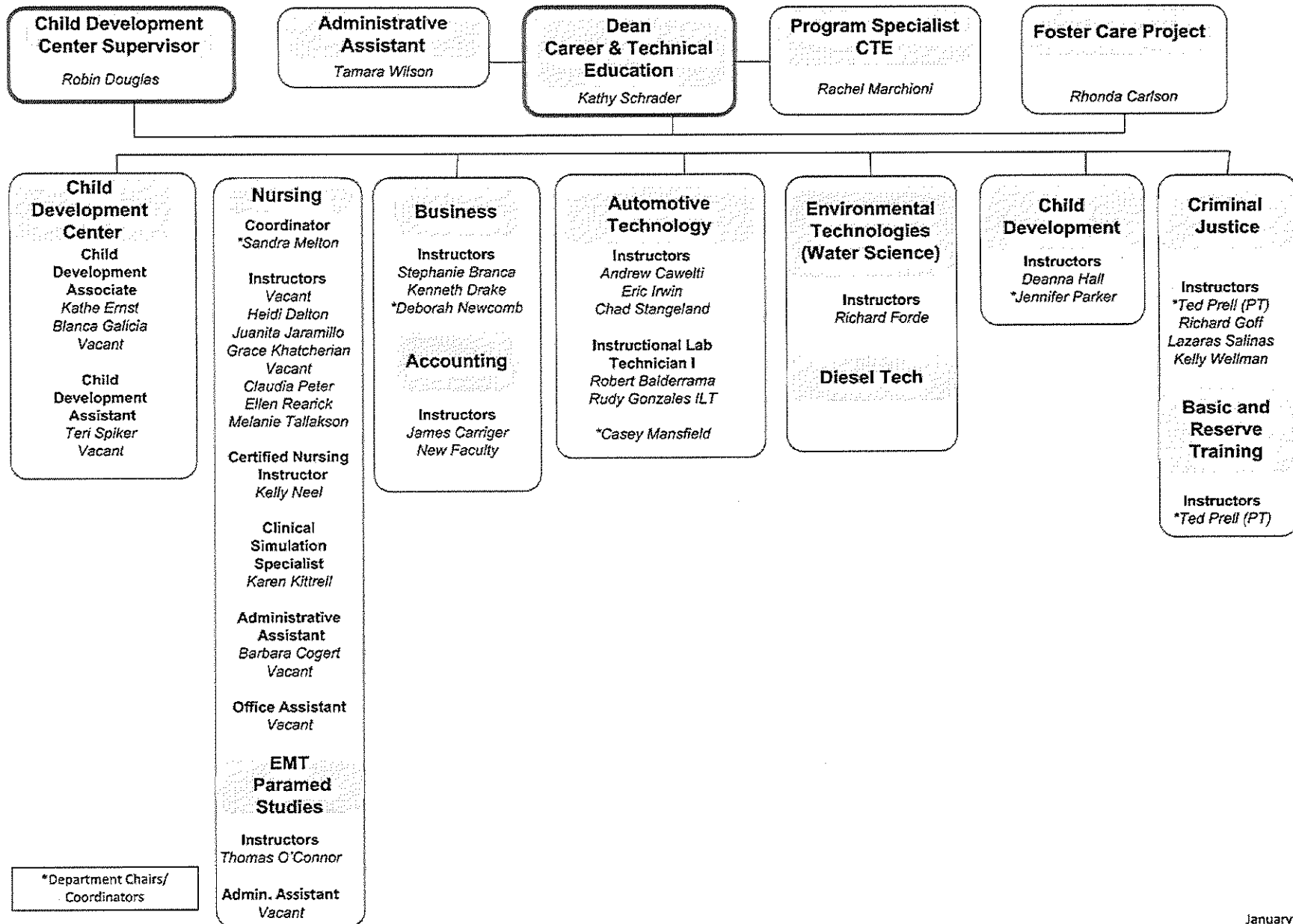
*Department Chairs/Coordinators

Ventura College – Life and Political Sciences Division

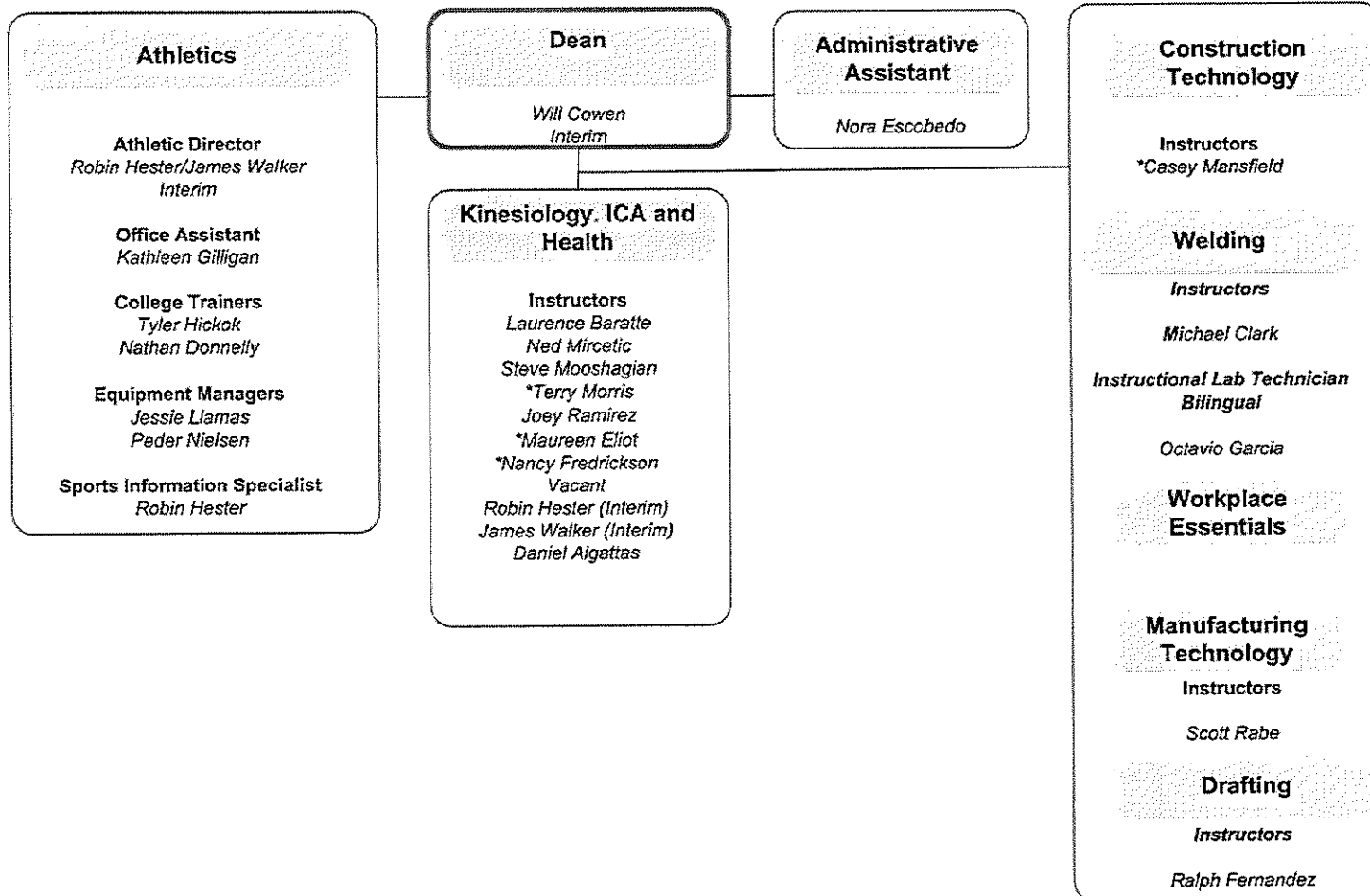


*Department Chairs/Coordinators

Ventura College – Career & Technical Education Division

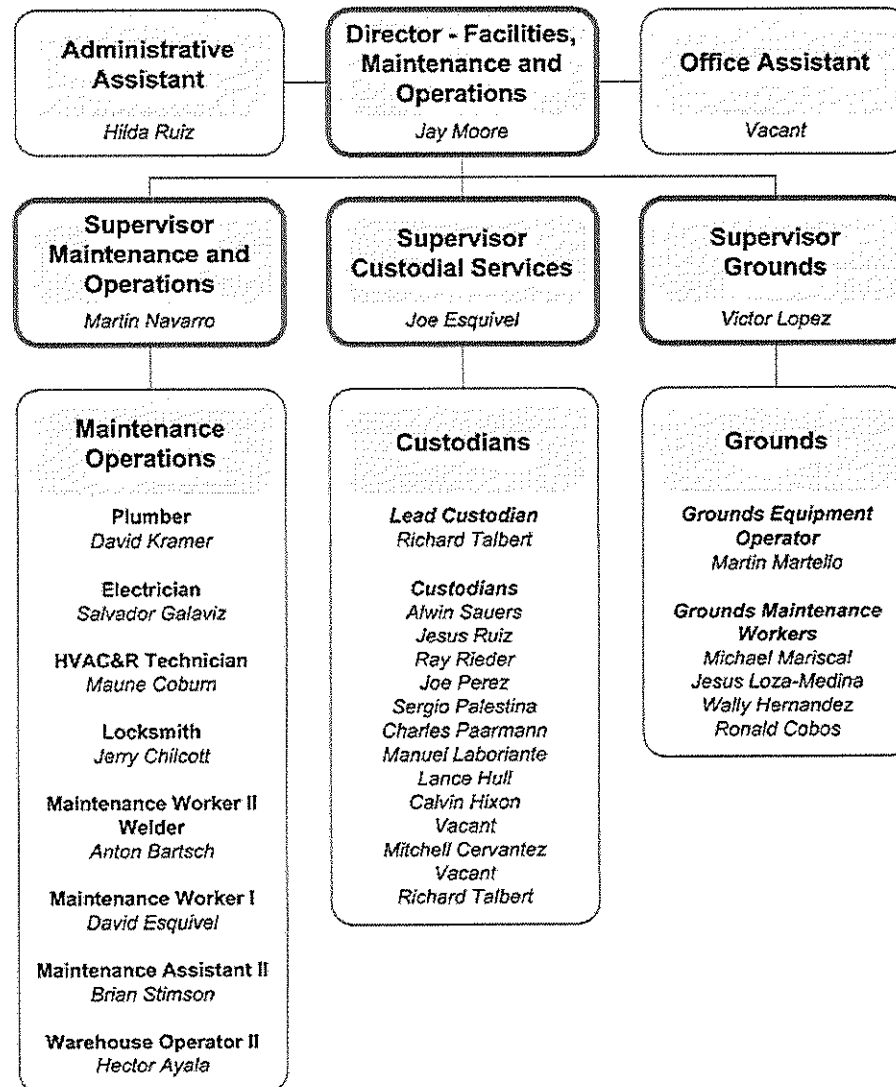


Ventura College – Health, Kinesiology, Athletics & Applied Science

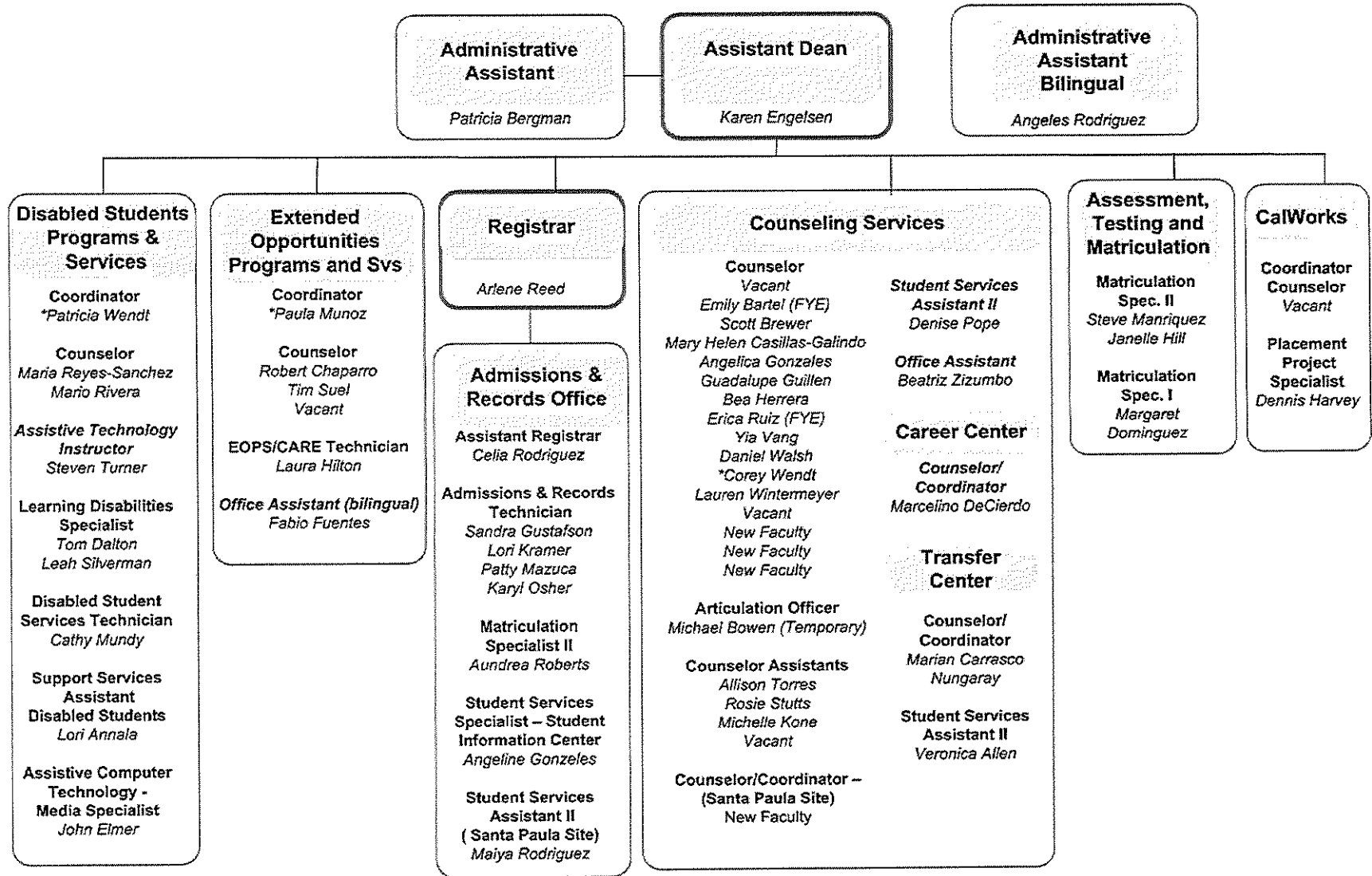


*Department Chairs/Coordinators

Ventura College – Facilities, Maintenance and Operations

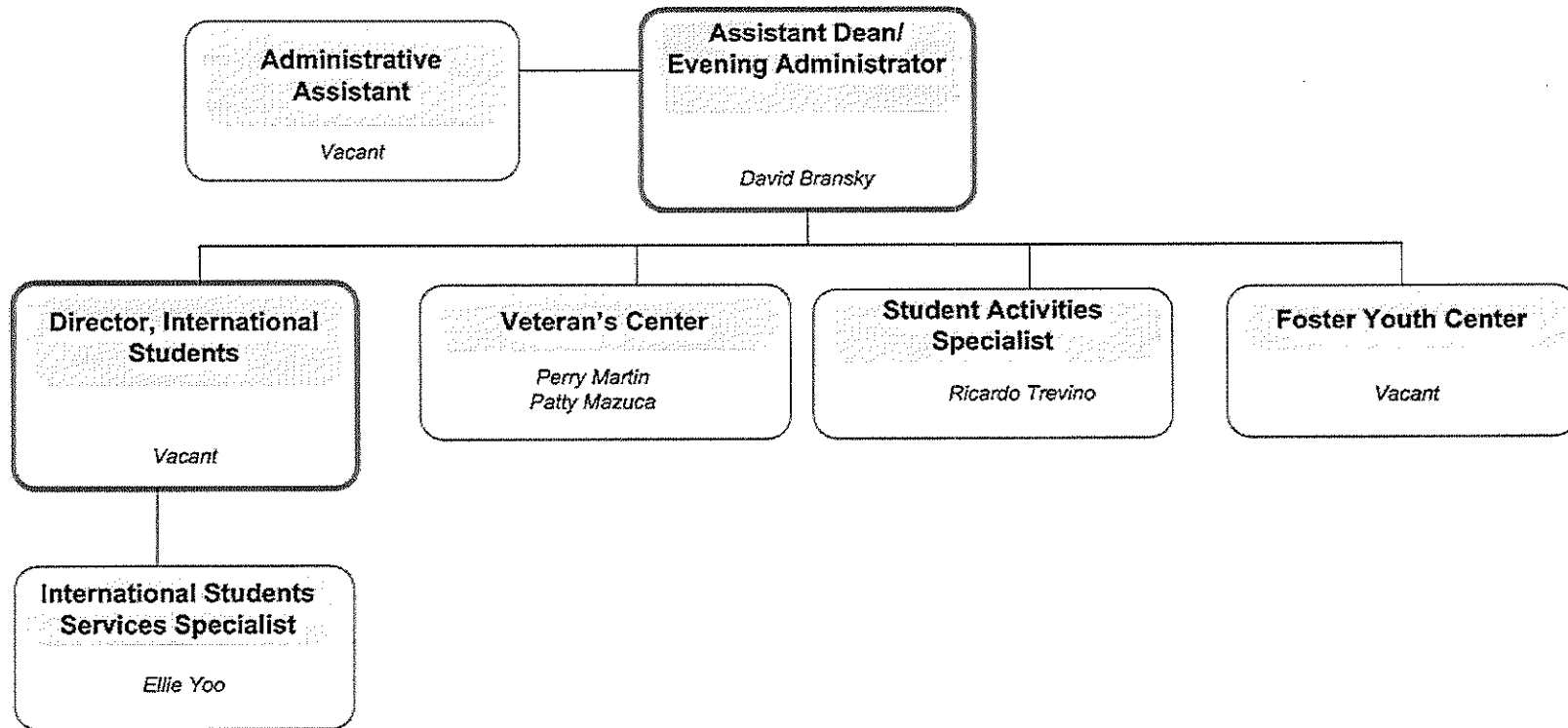


Ventura College – Student Services and Support

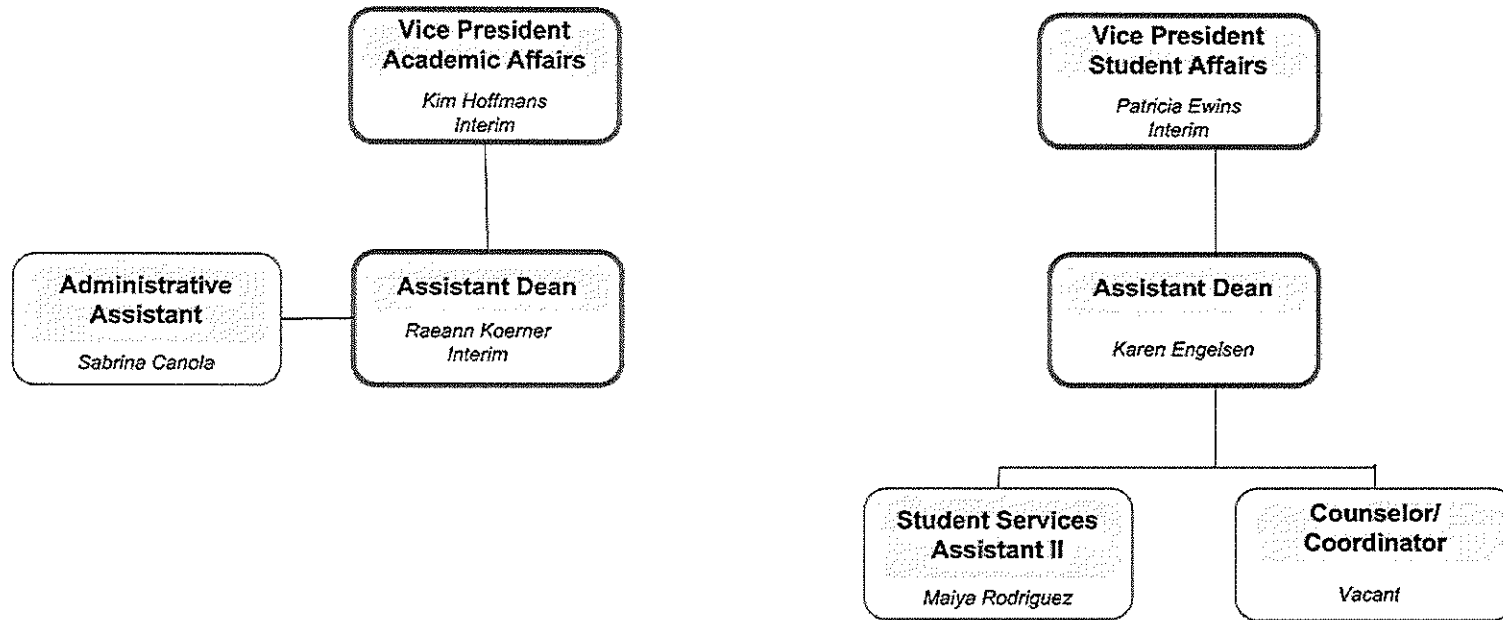


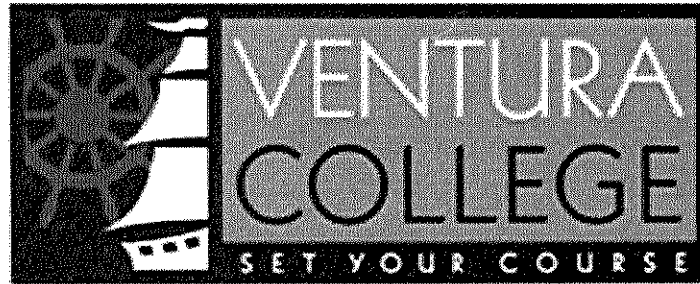
*Department Chairs/Coordinators

Ventura College – Student Life



Ventura College – Santa Paula Site





Ventura College will be a beacon of learning...a source of inspiration and guidance...for our students and community.

[Return to Organization Charts](#)

[Click Here To Exit](#)

Instructional Organizational Structure

PROGRAM/DEPARTMENT
ACT – Adaptive Computer Technology
AG – Agriculture
AES – American Ethnic Studies
ANAT – Anatomy
ANPH – Anatomy/Physiology
ANTH – Anthropology
ARCH – Architecture
Applied Sciences/Workplace Essential (Non-Contract)
ART – Art
AST – Astronomy
AUTO – Automotive
BIOL – Biology
BIOT - Biotechnology
BUS – Business
CD – Child Development
CDL – Cognitive Diverse Learners
CHEM – Chemistry
CHST – Chicano Studies
CJ – Criminal Justice
COMM – Communication Studies
COUN - Counseling
CT – Construction Technology
DANC – Dance
DM – Diesel
DRFT – Drafting
EAC – Educational Assistance Center
ECON – Economics
EMT – Emergency Medical Technology
ENGL – English
ENGM – English for Multilingual Students
ENGR – Engineering
ESL – English as a Second Language
ESRM – Environ. Sci. & Resource Mgmt.
Extended Education SVCS (Contract ED/Adult Ed)
Foreign Languages
GEOG – Geography
GEOL – Geology
GIS – Geographic Information Systems
GW – Guidance Workshops
HED – Health Education
HIST – History
HMSV – Human Services
HS – Health Science (CNA/Home Health Aide)
HUM – Humanities

PROGRAM/DEPARTMENT
ICA – Intercollegiate Athletics
IDS – Interdisciplinary Studies
KIN – Kinesiology (Formerly PE)
LIB – Library
LS – Learning Skills
MATH – Mathematic
MICR – Microbiology
MT – Manufacturing Technology
MUS – Music
NS – Nursing Science
PHIL – Philosophy
PHOT – Photography
PHSC – Physical Science
PHSO – Physiology
PHYS – Physics
PM – Paramedic Studies
PS – Police Science
POLS – Political Science
PSY – Psychology
SOC – Sociology
SS – Study Skills
SUP -- Supervision
THA – Theatre Arts
WEL – Welding
WS – Water Science
Admissions and Records
Assessment, Testing and Matriculation
CalWorks
Career Center
Child Development
Counseling Services
Disabled Students Programs & Services (EAC)
Extended Opportunities Programs and Services (EOPS)
Financial Aid
Foster Care
Freshman Year Experience
International Students
Student Activities
Student Health
Transfer Center
Veteran's Center

Division Name	ENGL, COMM, Learning Resources					Mathematics & Sciences					Arts, Behavioral and Social Sciences					Health, Kin and Athletics					Career & Tech Ed					Life and Physical Sciences				
Core Competency																														
Dean Assigned	Lynn Wright	CI	FT	PT	CRN	Dan Kumpf	CI	FT	PT	CRN	Gwen Huddleston	CI	FT	PT	CRN	Will Cowen	CI	FT	PT	CRN	Kathy Schrader	CI	FT	PT	CRN	Raeann Koerner	CI	FT	PT	CRN
Spring 2016	Communication Studies	10	22		32	Astronomy		1	7	8	Am Ethnic Studies	0	0	0	ARCH/CT/DRFT							Automotive		17	12	29	Anatomy	7	8	15
	English	37	65		102	Chemistry		22	19	41	Art	21	23	44	Architecture		6	1	7			Business		15	41	56	Anat/Physiology	0	0	0
	Multilingual English	3	5		8	Computer Science		0	3	3	Chicano Studies	0	3	3	Construction Techno		3	6	9			Child Development		9	16	25	Anthropology	10	14	24
	ESL	0	2		2	Engineering		2	4	6	Dance	3	6	9	Drafting		6	3	9			Criminal Justice		14	17	31	Biology	10	28	38
	French	0	2		2	Env Sci and Resource		0	3	3	Music	15	27	42	Health Education		7	29	36			Diesel		0	0	0	Biotechnology	0	0	0
	German	0	2		2	Geography		8	13	21	Philosophy	8	9	17	Intercollegiate Athletics		8	10	18			Emergency Med Tech		0	3	3	Economics	7	4	11
	Interdisc Studies	0	2		2	Geology		7	2	9	Photography	4	7	11	Kinesiology		11	22	33			Health Sciences		6	0	6	History	12	34	46
	Italian	0	2		2	Geographic Info Sys		0	0	0	Psychology	18	15	33	Manufacturing Tech		2	4	6			Nursing		19	3	22	Human Services	2	0	2
	Japanese	0	2		2	Math		51	57	108	Sociology	11	12	23	Welding		2	4	6			Paramedic		1	0	1	Microbiology	3	2	5
	Librarians					Physics		9	4	13	Theatre Arts	6	5	11								Police Science		0	0	0	Physiology	2	6	8
	Sign Language	0	9		9																	Supervision		0	0	0	Political Science	12	11	23
	Spanish	6	11		17																	Water Science		6	5	11				
	Service and Instructional Depts with Disciplines	LRC	4				MESA	2				Admin/Grants	1				Office ast	1					CTE Proj	1				Biol ILT	2	
Library Asst.		4				Chem Tech	2				Costume	1				eve/wkend	1					CDC	4							
Proctor		1				PS ILT	1				Theater Tech	2				Info	1					Auto	3							
Supplement		1									Klin	1				Trainer	1					NSG Staff	4							
Velocidad		2									Distance Ed	2				Equip. Manager	2													
Tutorial		2																												
	Natawni Pringle					Dora Hartman					Sandy Mason					Nora Escobedo					Tammy Wilson					Provisional Admin				
Division	1					1					1					1					1					1				
TOTALS		14	56	124	180		6	100	112	212		8	86	107	193		8	45	79	124		13	87	97	184		3	65	107	172
Direct Reports	194					218					201					132					197					175				

Dean Assigned	Lynn Wright	Dan Kumpf	Gwen Huddleston	Will Cowen	Kathy Schrader	Raeann Koerner
Grants & Extra Assignments	Velocidad Title V Library- Book Loan, Beach... Tutoring Accreditation Standard II Lead Basic Skills Initiative (BSI)	MESA ACCESO (CSUCI)	Professional Development Distance Education Cultural, arts, music and theater events ACCJC DE Substantive Report Global studies program	Athletic Events Athletic Facilities	CTE Advisory Diesel (Gibbs) Programs Agriculture (Bus & Sci) Program Basic Law Enforcement Program Reserve Law Enforcement Program Perkins CTE Transitions Grant CTE Enhancement Grant Prop 39 Grant VC Innovates Grant SCRC Regional CTE Child Development Center Foster Youth and Kinship	Pathway to Law School Cadaver Compliance
Buildings						
Learning Options						
Committee Assignments	Admin Council Deans Meetings Accreditation Com.	Admin Council Deans Meetings Accreditation Com.	Admin Council Deans Meetings Accreditation Com.	Admin Council Deans Meetings Accreditation Com.	Admin Council Deans Meetings Accreditation Com.	
Division Admins	Natawni Pringle	Dora Hartman	Sandy Mason	Nora Escobedo	Tammy Wilson	Provisional Admin
Additional Classified Staff in the Division	Rebecca Russel- LRC Sup Cindy Hulce- LRC ILT Marcel Koressa- LRC ILT II Marco Ruiz- LRC I Dana Boynton- Library Asst. Tanya Shaffer- Library Asst. Sarah Downs- Library Asst./Santa Paula Vacant- Library Tech Vacatn- Proctor Vandana Gavaskar- Tutorial Svc Spec I Bill Hart- Dir, Velocidad Elizabeth Nelson- Adm Velocidad Erika Hurtado- Tutoria Spe I	Yessica Ortiz- MESA Counsl Asst. Amy Bettinger- MESA SS Asst. Kaifeng Liang- Chem ILT vacant Chem ILT Elmar Palma PS ILT	Eileen Crump- Admin/Grant Abra Flores- Costume Willy Eck- Theater Tech Vacant Performing Arts Tech William Metcalf- Kiln Matthew Moore- Distance Ed Sharon Oxform- Distance Ed	Kathleen Giligan- Office ast John Gleeson- eve/wkend Info Robin Hester - Tyler Hickok- Trainer Nathan Donnelly- Trainer Peder Nielsen- Equip. Manager Jessie Llamas- Equip. Manager	Rachel Marchioni- CTE Proj. Spec. Robin Douglas- CDC Sup Kathe Ernst- CD Assoc. Blanca Galicia- CD Assoc. Teri Spiker- CD Asst. Robert Balderrama- Auto ILT Octavio Garcia- Auto Inst. Asst. vacant- Auto ILT Barbara Cogert- Nsg Admin Cathy Faulkner- Nsg Admin Karen Kittrell- Clinical Sim. Nsg Vacant Off Asst	Sheena Billock- Biol ILT Carol Smith- Biol ILT
Hierarchy/Org						
Division Office and Phone						

SPRING 2016 DEPARTMENT COORDINATOR SUO "TO-DO LIST"

All tasks should be completed then the Department Coordinator must meet with a Facilitator before April to have it checked off. Facilitators can help with any of these tasks.

1. Each department should select:
 - One ISLO or ISUO
 - 2 to 3 SUOs
2. DCs (Department Coordinators) will assess all SUOs and designated ISUO/ISLO this academic year (Fall 2015 or Spring 2016).
3. Enter all SUOs and ISUO/ISLO with their rotational cycles in TracDat. SUOs that will no longer be assessed should be archived (if data has been entered) or deleted (if no data has been entered).
 - Please use standard naming convention for ease in running reports. Examples: ISUO-1, SUO-1
 - Set an assessment cycle of Summer 2015, Fall 2015 or Spring 2016 for ALL SUOs/ISUO/ISLO.
4. Assessment tools should be selected for each SUO/SLO and entered into TracDat.
 - Run Ad-Hoc Report called "Assessment Tools for Active SUOs" to see if they are entered.
5. Rubrics for these assessments should be created and uploaded into TracDat.
6. Run the Ad-Hoc report called "Rotational Plan for Services - Active SUOs".
 - Does every SUO have an assessment cycle set for Summer 2015, Fall 2015 or Spring 2016?
 - If not, fix these.
7. Run the Ad-Hoc report called "Service Unit Completed Assessments".
 - Were all scheduled assessments completed?
 - Were any SUOs assessed this academic year (Fall 2015 – Spring 2016)?
 - If not, plan their assessments for this semester.
8. Department meetings should document discussion of SUOs, findings, initiatives, and "closing the loop".

For questions or assistance, please contact one of your SLO Facilitators.

Debbie Newcomb
dnewcomb@vcccd.edu
289-6268

Andrea Horigan
ahorigan@vcccd.edu
289-6196

SERVICE UNITS	COORDINATOR	Attended Training?
A&R		
Assessment	Janelle Hill	Yes
CalWorks	Dennis Harvey	Yes
Career Center	Marian Carrasco-Nungaray	Yes
Child Devel Center	Robin Douglas	
Counseling	Corey Wendt	Yes
Custodial Services		
Distance Ed	Matt Moore & Sharon Oxford	Yes
EAC	Patty Wendt	Yes
EOPS	Paula Munoz	Yes
Facilities (FMO)	Jay Moore & Victor Lopez?	Yes
Financial Aid	Alma Rodriguez	Yes
Fiscal Services	Susan Royer & Janeen Beard	Yes
FYE	Allison Torres & Erica Ruiz	
Learning Center		
Library Services		
Make-up Testing		
MESA		
Off Campus Programs		
Outreach Services	Richard Torres	Yes
SI		
Student Activities	Rick Trevino	
Student Connect Center	Angeline Gonzales	Yes
Student Health	Mary Jones	
Technology Services	Grant Jones	Yes
Transfer Center	Marcelino DeCierdo & Michelle Kone	Yes
Tutoring	Vandana Gavaskar	Yes
Veteran's Center	Perry Martin	Yes

SLOs and CLOSING THE LOOP

Accreditation expectation is that we will be at the highest level on the ACCJC rubric: “Sustainable, continuous quality improvement”. Therefore, we must use SLO findings to improve programs and courses. This is what is called “Closing the Loop”.

Closing the Loop (AKA: follow-up on previous assessments)

- ▶ Assess
 - ▶ Discuss findings
 - Use the data to evaluate the effectiveness of teaching
 - If students met expectations:
 - ▶ Identify this as a program strength!
 - ▶ Consider increasing expectations.
 - ▶ Determine what might be tried to increase success in those students who did not meet expectations.
 - If students did not meet expectations:
 - ▶ Review the SLOs – do they really identify what students should know?
 - ▶ Clarify the SLOS – ensure that leading activities strengthen knowledge/skills.
 - ▶ Review expectations – is the performance target realistic?
 - ▶ Review the assessment tool – is it the right tool for assessing the outcome?
 - ▶ Review/revise learning methods used.
 - ▶ Review/revise course content.
 - ▶ Create initiatives
 - Resource requests must link to SLO data
 - Changes not requiring resources
 - ▶ Implement initiatives
 - ▶ **Re-assess**
 - ▶ **Report these findings**
- } “Closing the Loop”

Examples of Closing the Loop Findings:

Good examples (after implementation of initiatives):

- Faculty increased student contact. The result was increased completion of semester projects.
- The department budget was increased by \$500 to purchase equipment requested in initiatives. Now there are adequate supplies to use for needed lab practice.

Bad examples (these are initiatives – not re-assessment findings):

- The assignments assessing this SLO were increased by one.
- Design more specific assignments to help student master these concepts.
- Increase guidance to students as the progress through assignments.

AD-HOC REPORTS FOR SERVICE UNITS

Customized reports are available to provide any information you need. You can also create your own Ad-Hoc reports. Facilitators can help you create reports for specific needs.

Service Unit : Ad Hoc		
Reports > Ad Hoc		
Report Title	Description	Data View
Assessment Tools for Active SUOs	SUOs with assessment cycles	Service Unit - SUO Assessment Plan
Initiatives for SUOs		Service Unit - Unit Findings (Related to Assessment Tool)
PSUOs to be Assessed Fall 2015		Service Unit - SUO Assessment Plan
PSUOs to be Assessed Spring 2016		Service Unit - SUO Assessment Plan
Rotational Plan for Services	SUOs with assessment cycles	Service Unit - SUO Assessment Plan
Rotational Plan for Services - Active SUOs	SUOs with assessment cycles	Service Unit - SUO Assessment Plan
Service Unit Completed Assessments	Completed SUO Assessments	Service Unit - Unit Findings (All Findings)
Service Unit SUOs Findings with Faculty/Staff Suggestions		Service Unit - Unit Findings (Related to Assessment Tool)

SPRING 2016 DEPARTMENT CHAIR SLO "TO-DO LIST"

All tasks should be completed then the Department Chair must meet with a Facilitator before April to have it checked off. Facilitators can help with any of these tasks.

1. **Ensure** that all courses in your Course and Program units are accurate.
 - a. Check the Home Page.
 - Are all courses correct? (No missing courses, none that are not offered)
 - Does every course have SLOs?
 - NOTE: If your course has no SLOs, it will not appear on this report and you will need to fix that problem first.
 - Have you "closed the loop" on any assessments?
 - Make plans to close the loop on at least 1/4 of all assessments before Fall 2016
 - b. Run the Ad-Hoc report called "Courses with their SLOs".
 - Check that all SLOs are current.
 - Verify that each course has at least one ISLO.
 - Verify that each SLO has an assessment cycle set **no later than Spring 2017**.
 - c. Run the Ad-Hoc report called "Adherence to Assessment Cycle".
 - Any course that did NOT assess during the scheduled cycle must be assessed this semester.
 - Note any courses set to assess this semester and ensure that your department has planned those assessments.
2. Any changes to SLOs should be made ASAP and must also be changed in Curricunet and on course syllabi.
3. Verify that course syllabi have the correct CSLOs on them.
4. If you have a Program (degree or COA), check your Program Unit.
 - a. Run the Ad-Hoc report called "Assessment of PSLOs & Assessment Cycle Review".
 - Does every PSLO have an assessment cycle set?
 - Are there any PSLOs that have NOT been assessed?
 - b. Run the Ad-Hoc report called "PSLOs with Closing the Loop".
 - Have you closed the loop on any PSLO findings?
 - If not, plan to close the loop on at least one PSLO this semester.
5. Have department meetings at least once per semester and have minutes documenting the meeting, as well as discussions about SLOs (findings, initiative development, and continuous improvement – AKA "closing the loop").

PROGRAMS	PSLOs in Catalog Match TracDat	Other
Accounting	X	
Administrative Assistant	X	
Anthropology	X	
Art (5 degrees - Art Hx, Studio Arts, Fine Arts, Ceramics, Photography)		Do not match
Automotive Technology		Do not match
Bilingual/Cross Cultural Studies	X	No catalog description
Biological Sciences	X	
Business Administration & Supervision (3 degrees)	X	
Child Development (2 degrees)		Do not match
Communication	X	
Construction Technology (2 degrees)	X	
Criminal Justice (2 degrees)	X	No catalog description
Drafting	X	
Engineering & Physical Science (2 degrees)	X	
English		Do not match
Geography		Do not match
Geology	New Program Oct 2015 - in next catalog	
Global/International Studies	X	
History	X	
Holistic Studies (Emphasis in a GE degree)		Do not match
Human Services	X	
Kinesiology		Do not match
Manufacturing – Biomedical Devices		Do not match
Mathematics	X	
Medical Assistant (2 degrees)	X	
Music	X	
Nursing Science	X	
Paramedic Studies		Do not match
Philosophy	New Program Oct 2015 - in next catalog	
Political Science		Do not match
Psychology	X	
Social Media Marketing	New	Next catalog
Sociology	X	
Theater Arts		Do not match
Water Science	X	
Welding	X	

Total # of Programs	36
----------------------------	-----------

COURSE WITH SLOS THAT ARE MISSING OR DO NOT MATCH TRAC DAT

COURSE	SLOs Don't match TracDat	SLOs are missing in TracDat	SLOs are missing in Curricunet	Other
ANTH V35	X			
ARCH V23	X			Curricunet has 5 CSLOs, T-D has only 4
CD V28	X			
CD V29	X			
CD V64B	X			
CT V67/ARCH V67	X			
DRAFT V05A	X			Curricunet has 5 CSLOs, TD has only 4
DRFT V51	X			
DRFT V99	X			
ENGR V16		X		
ESL V10B	X			
ESL V10C	X			
ESL V10D	X			
HED V97	X			
HIST V04B	X			
HIST V12	X			
KINV16	X			SLOs are for wrong course (lifeguard, not kickboxing) – don't match
MUS V06	X			Missing CSLO-1, others are OK
MUS V07	X			
MUS V09B	X			Missing CSLO-1, others are OK
MUS V14B	X			
MUS V14C	X			
MUS V31A	X			
MUS V31G	X			
MUS V31H	X			
POLS V15		X		
POLSV16		X		
SOC V02				CSLO #2 is crossed out in Curricunet but present in TracDat
SS V03	X			
THA V01	X			
THA V11A	X			
THA V29	X			

SLOs and CLOSING THE LOOP

Accreditation expectation is that we will be at the highest level on the ACCJC rubric: “Sustainable, continuous quality improvement”. Therefore, we must use SLO findings to improve programs and courses. This is what is called “Closing the Loop”.

Closing the Loop (AKA: follow-up on previous assessments)

- ▶ Assess
 - ▶ Discuss findings
 - Use the data to evaluate the effectiveness of teaching
 - If students met expectations:
 - ▶ Identify this as a program strength!
 - ▶ Consider increasing expectations.
 - ▶ Determine what might be tried to increase success in those students who did not meet expectations.
 - If students did not meet expectations:
 - ▶ Review the SLOs – do they really identify what students should know?
 - ▶ Clarify the SLOS – ensure that leading activities strengthen knowledge/skills.
 - ▶ Review expectations – is the performance target realistic?
 - ▶ Review the assessment tool – is it the right tool for assessing the outcome?
 - ▶ Review/revise learning methods used.
 - ▶ Review/revise course content.
 - ▶ Create initiatives
 - Resource requests must link to SLO data
 - Changes not requiring resources
 - ▶ Implement initiatives
 - ▶ Re-assess
 - ▶ Report these findings
- } “Closing the Loop”

Examples of Closing the Loop Findings:

Good examples (after implementation of initiatives):

- Faculty increased student contact. The result was increased completion of semester projects.
- The department budget was increased by \$500 to purchase equipment requested in initiatives. Now there are adequate supplies to use for needed lab practice.

Bad examples (these are initiatives – not re-assessment findings):

- The assignments assessing this SLO were increased by one.
- Design more specific assignments to help student master these concepts.
- Increase guidance to students as the progress through assignments.

AD-HOC REPORTS

Customized reports are available to provide any information you need. You can also create your own Ad-Hoc reports. Facilitators can help you create reports for specific needs.

[Home](#) [Program](#) [Course Assessment Plan](#) [Findings](#) [Reports](#) [Documents](#)

[Program](#) | [Course](#) | [Ad Hoc](#)

[Courses \(Social Sciences/Humanities\) - SOC > Reports > Ad Hoc](#)

Report Title	Description	Data View
SLOs assessed by course		Program - Course Findings
Adherence to Assessment Cycle		Program - Course Findings
Assessment Cycles & SLOs Review		Program - Course Findings
Copy Fall Assessment Cycles Completion as of 12/9/15		Program - Course Findings
Course SLOs Findings with Faculty Suggestions		Program - Course Findings (Related to Assessment Tool)
Courses with their CSLOs	List of courses and their CSLOs	Program - Course Assessment Plan
Initiatives for Course SLOs		Program - Course Findings (Related to Assessment Tool)
Number of SLOs assessed	Course CSLOs/ISLOs assessed	Program - Course Findings
Rotational Plan	Course CSLOs/ISLOs with assessment cycles	Program - Course Assessment Plan
SLOs to be Assessed in Fall 2015		Program - Course Assessment Plan
SLOs to be Assessed in Spring 2015		Program - Course Assessment Plan
SLOs to be Assessed in Spring 2016		Program - Course Assessment Plan

409 Total # of SLOs not assessed (or data put in TracDat) 1/26/16

55 SLOs

Communication
ENGM/ESL
French*
German*
HED
ICA
Italian*
Japn*
Kin
SL*
Span*

113 SLOs

ANTH
AST
BIOL
CHEM
CS
ENGR
ESRM
GEOG
GEOL
MATH
PHYS

129 SLOs

ARCH
AUTO
CD
CT*
DRAFT
MT
PM
WEL
WS

95 SLOs

ART
CHST
DANC
HIST
MUS
PHOT
POLS*
PSY
THAV*

17 courses

ENG
IDS*
LIB