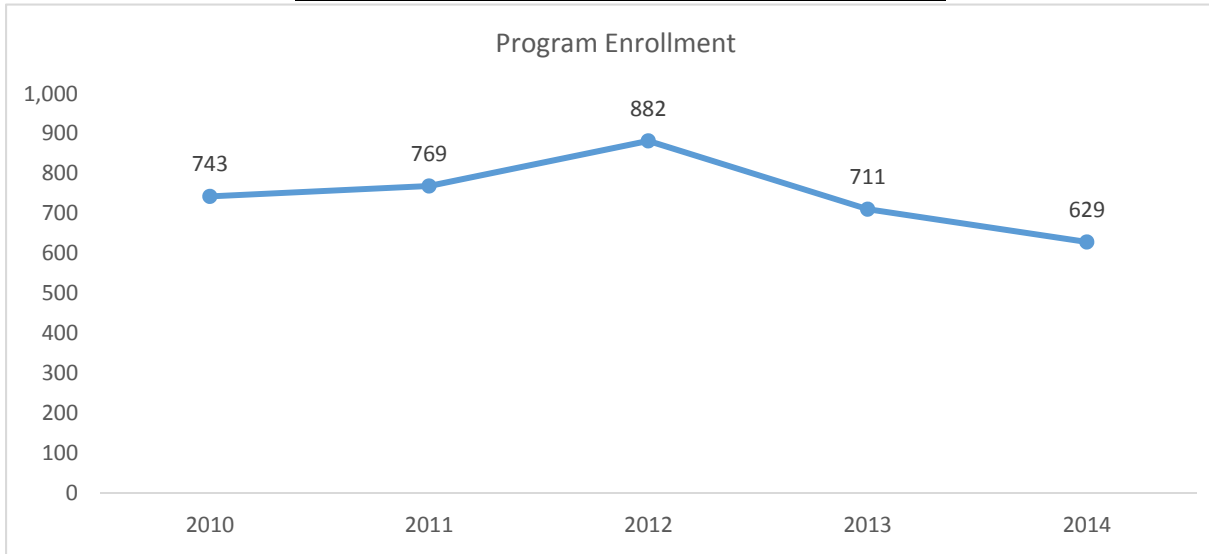


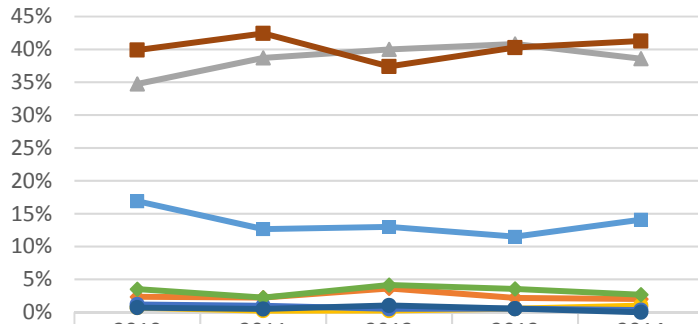
2015-2016 Program Review Datasheet

Nursing Science

Section A - Enrollment and Student Demographics

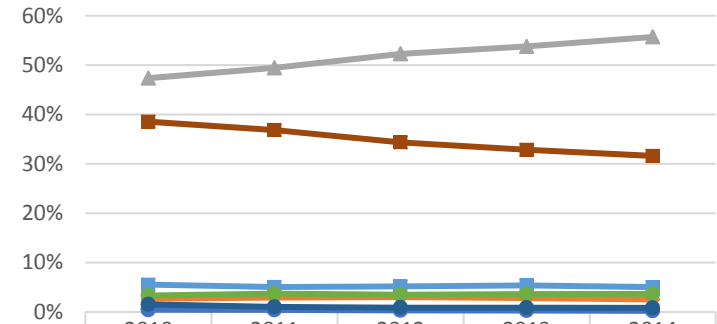


Student Ethnicity - Nursing Science



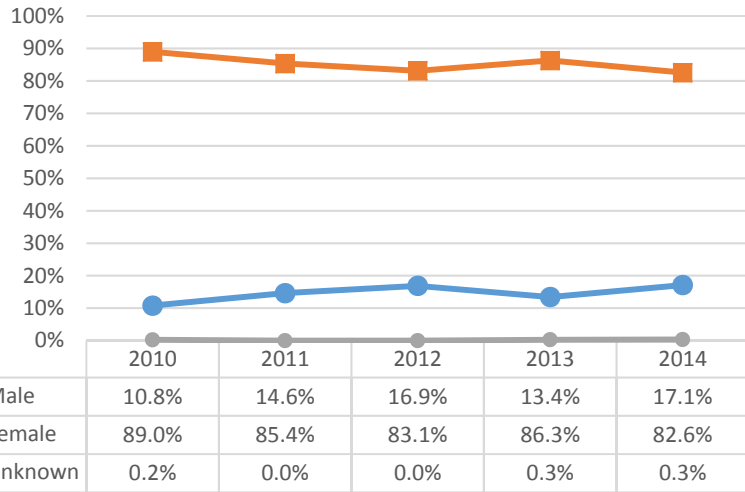
| | 2010 | 2011 | 2012 | 2013 | 2014 |
|-------------|-------|-------|-------|-------|-------|
| Asian | 16.9% | 12.7% | 13.0% | 11.5% | 14.1% |
| Black | 2.3% | 2.2% | 3.6% | 2.2% | 2.0% |
| Hispanic | 34.7% | 38.7% | 40.0% | 40.8% | 38.6% |
| Native Amer | 0.7% | 0.2% | 0.3% | 0.5% | 1.0% |
| Pac Island | 1.2% | 1.0% | 0.5% | 0.5% | 0.3% |
| Two or More | 3.5% | 2.2% | 4.2% | 3.6% | 2.7% |
| Unknown | 0.7% | 0.5% | 1.0% | 0.5% | 0.0% |
| White | 39.9% | 42.4% | 37.4% | 40.3% | 41.3% |

Student Ethnicity - Ventura College

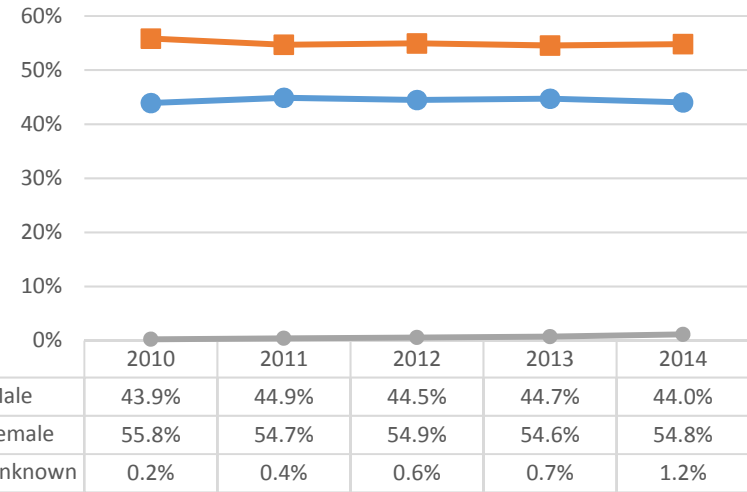


| | 2010 | 2011 | 2012 | 2013 | 2014 |
|-------------|-------|-------|-------|-------|-------|
| Asian | 5.5% | 5.1% | 5.2% | 5.4% | 5.0% |
| Black | 2.7% | 2.9% | 3.0% | 2.8% | 2.5% |
| Hispanic | 47.4% | 49.4% | 52.3% | 53.8% | 55.7% |
| Native Amer | 0.6% | 0.6% | 0.5% | 0.4% | 0.4% |
| Pac Island | 0.4% | 0.4% | 0.3% | 0.3% | 0.2% |
| Two or More | 3.3% | 3.7% | 3.5% | 3.6% | 3.6% |
| Unknown | 1.5% | 1.0% | 0.9% | 0.9% | 0.8% |
| White | 38.5% | 36.8% | 34.4% | 32.8% | 31.6% |

Student Gender - Nursing Science

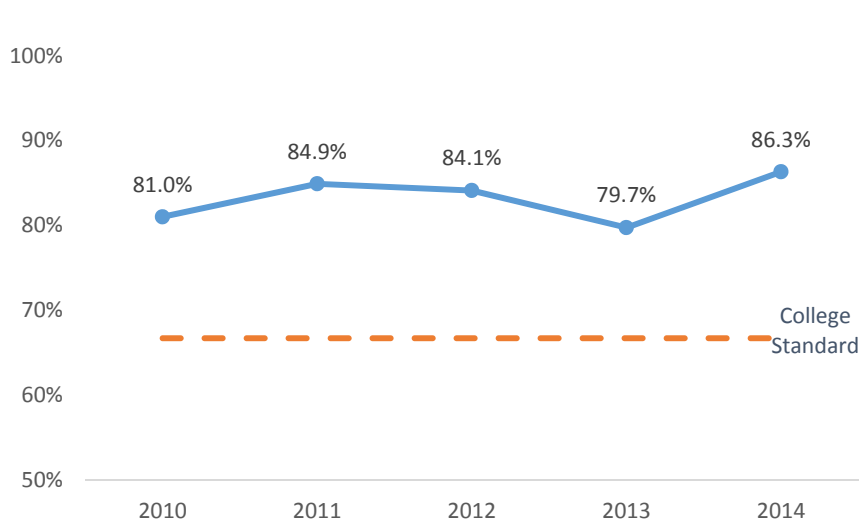


Student Gender - Ventura College

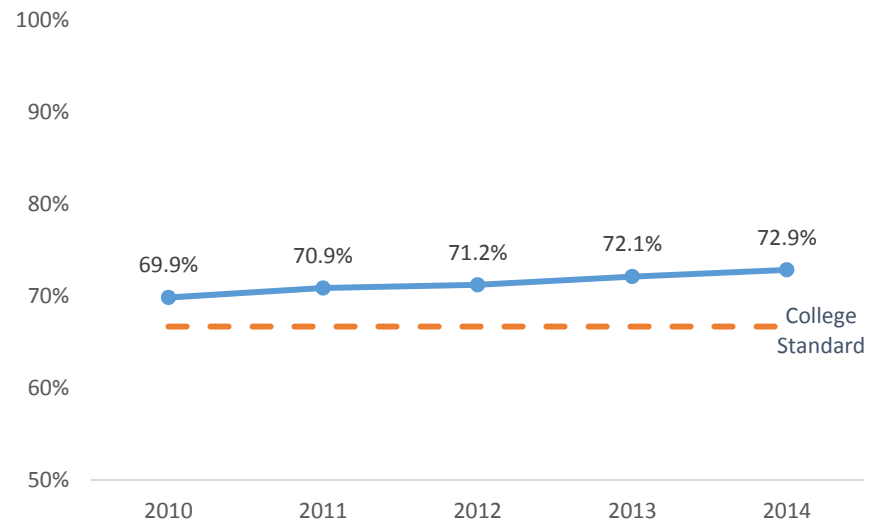


Section B - Course Success Rate

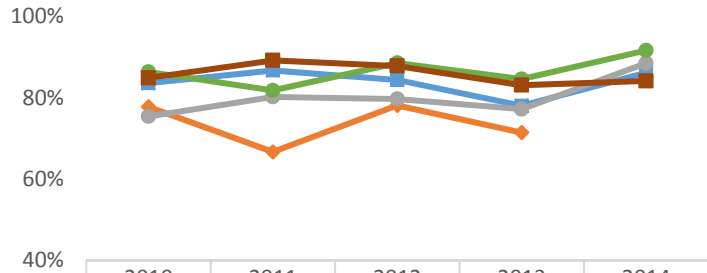
Course Success Rate - Nursing Science



Course Success Rate - Ventura College

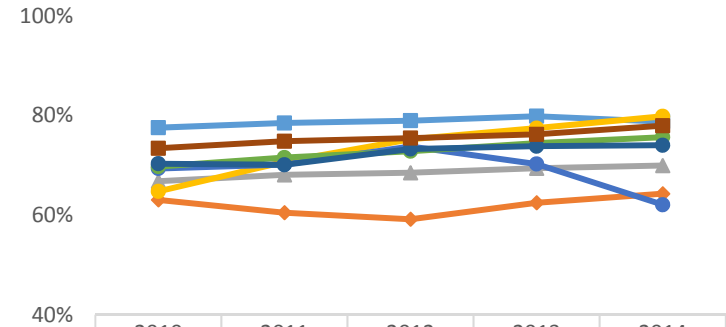


Course Success Rate by Ethnicity - Nursing Science*



| | 2010 | 2011 | 2012 | 2013 | 2014 |
|-------------|-------|-------|-------|-------|-------|
| Asian | 83.6% | 86.7% | 84.4% | 78.0% | 86.2% |
| Black | 77.8% | 66.7% | 78.1% | 71.4% | |
| Hispanic | 75.4% | 80.2% | 79.7% | 77.2% | 88.5% |
| Native Amer | | | | | |
| Pac Island | | | | | |
| Two or More | 86.4% | 81.8% | 88.6% | 84.6% | 91.7% |
| Unknown | | | | | |
| White | 84.9% | 89.2% | 87.8% | 83.1% | 84.1% |

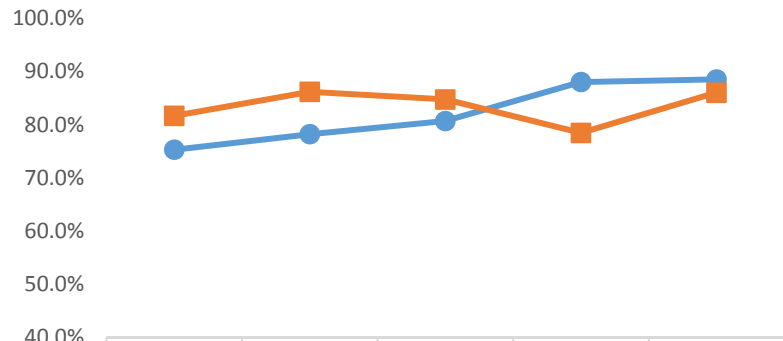
Course Success Rate by Ethnicity - Ventura College



| | 2010 | 2011 | 2012 | 2013 | 2014 |
|-------------|-------|-------|-------|-------|-------|
| Asian | 77.6% | 78.5% | 79.0% | 79.9% | 78.8% |
| Black | 63.1% | 60.5% | 59.2% | 62.5% | 64.3% |
| Hispanic | 66.8% | 68.1% | 68.5% | 69.4% | 70.0% |
| Native Amer | 64.8% | 70.7% | 75.2% | 77.5% | 79.8% |
| Pac Island | 69.4% | 70.2% | 73.8% | 70.3% | 62.1% |
| Two or More | 69.8% | 71.6% | 72.8% | 74.5% | 75.7% |
| Unknown | 70.3% | 70.1% | 73.3% | 73.8% | 74.0% |
| White | 73.4% | 74.8% | 75.5% | 76.2% | 78.0% |

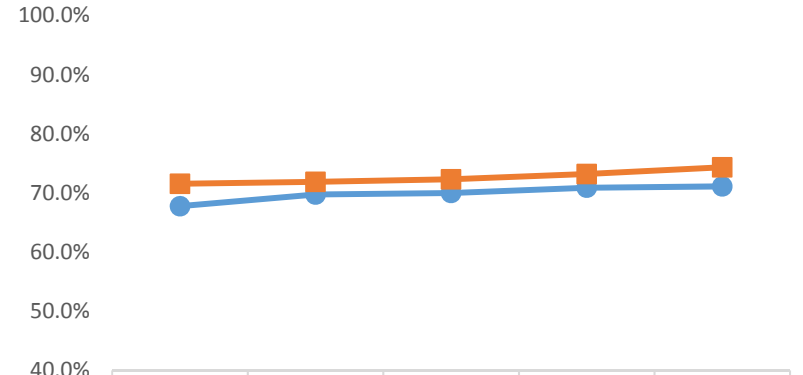
*Ethnicity data only displayed for cells with 10 or more students

Course Success Rate by Gender - Nursing Science



| | 2010 | 2011 | 2012 | 2013 | 2014 |
|--------|-------|-------|-------|-------|-------|
| Male | 75.3% | 78.2% | 80.7% | 88.0% | 88.5% |
| Female | 81.7% | 86.2% | 84.8% | 78.5% | 86.0% |

Course Success Rate by Gender - Ventura College

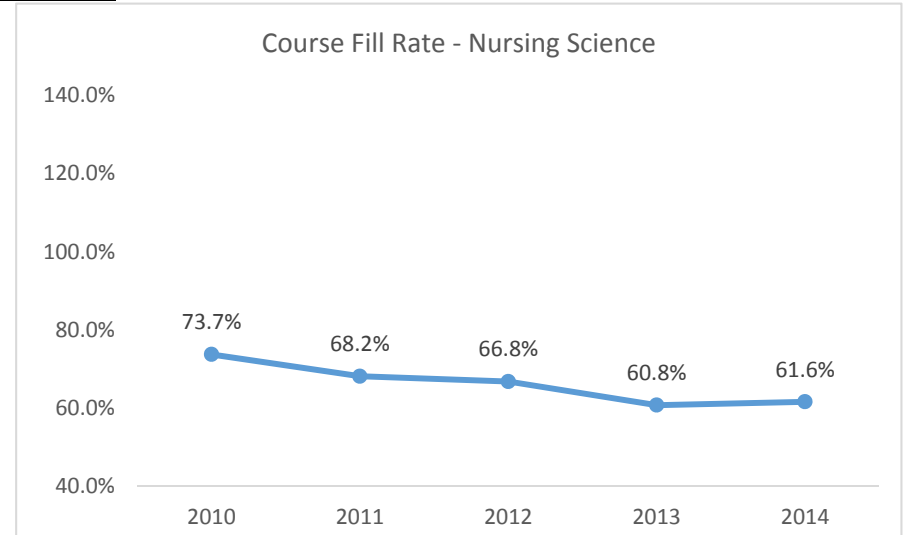
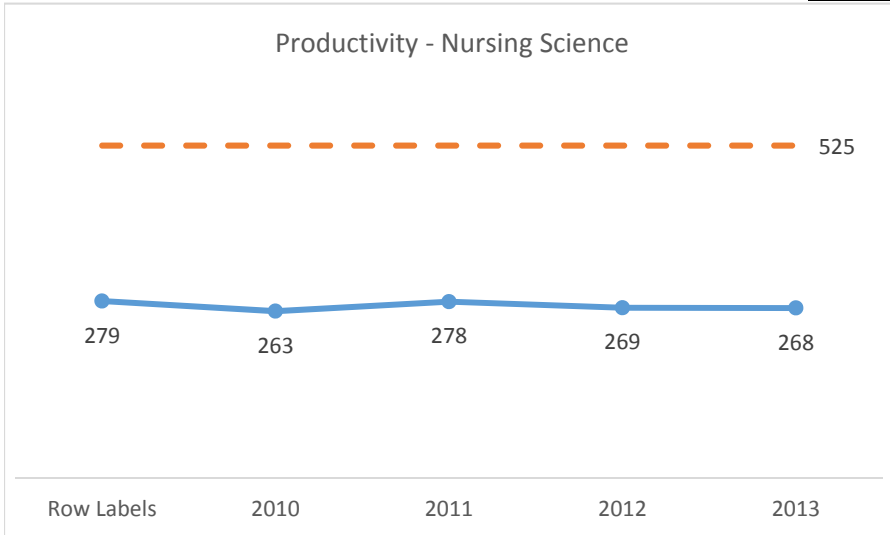


| | 2010 | 2011 | 2012 | 2013 | 2014 |
|--------|-------|-------|-------|-------|-------|
| Male | 67.8% | 69.8% | 70.0% | 70.9% | 71.1% |
| Female | 71.6% | 71.9% | 72.3% | 73.2% | 74.3% |

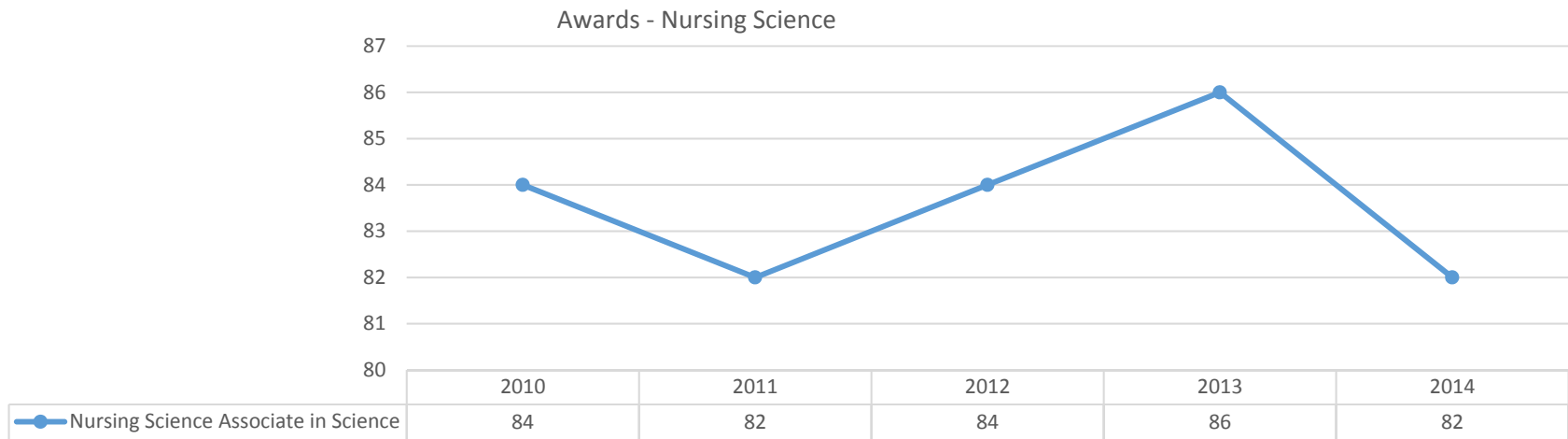
2015-2016 Program Review Datasheet

Nursing Science

Section C - Productivity

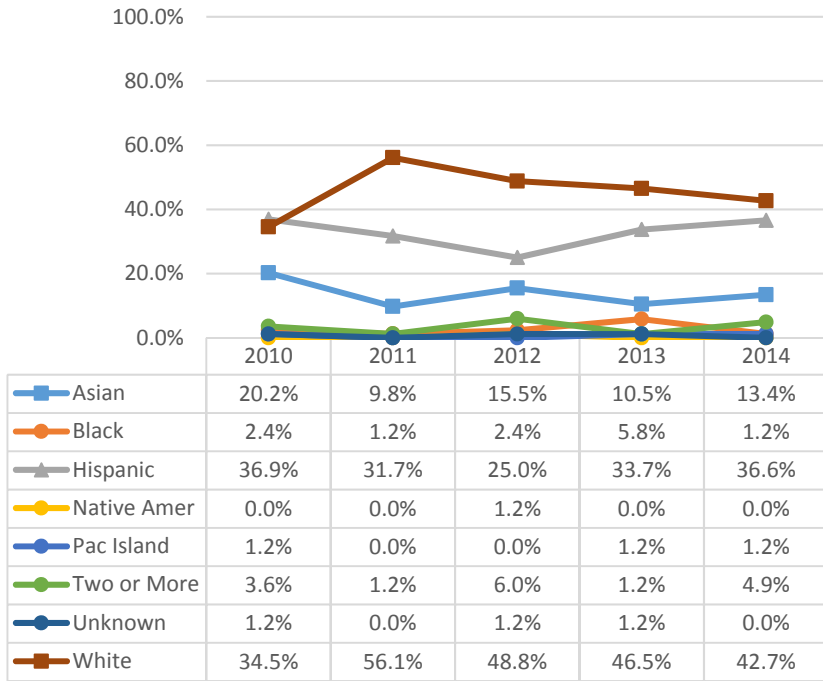


Section D - Degrees and Certificates Awarded



2015-2016 Program Review Datasheet Nursing Science

Awards by Ethnicity - Nursing Science



Awards by Gender - Nursing Science

