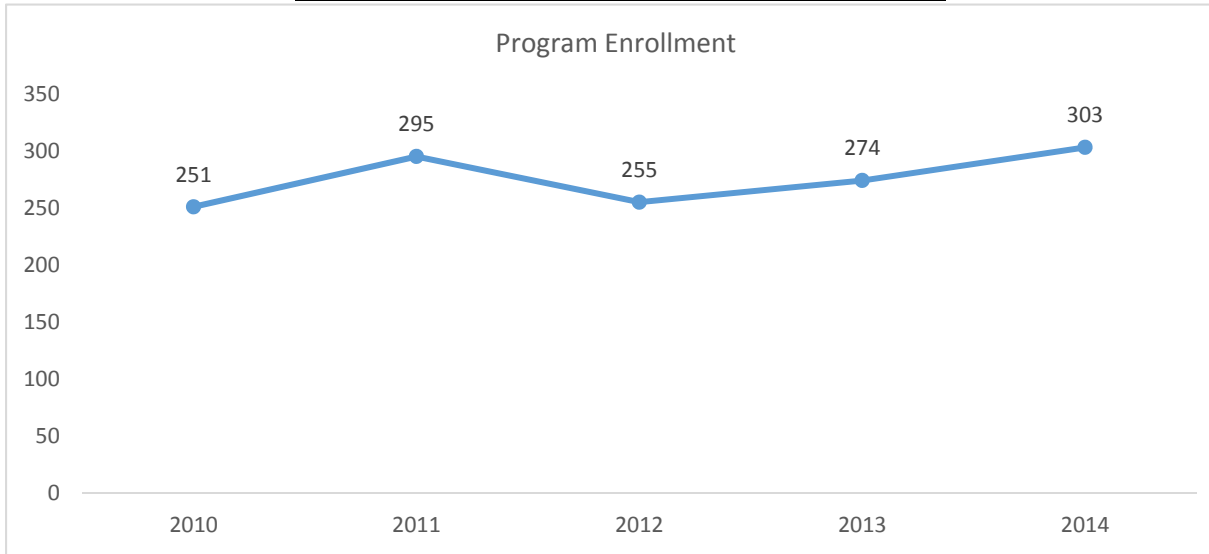
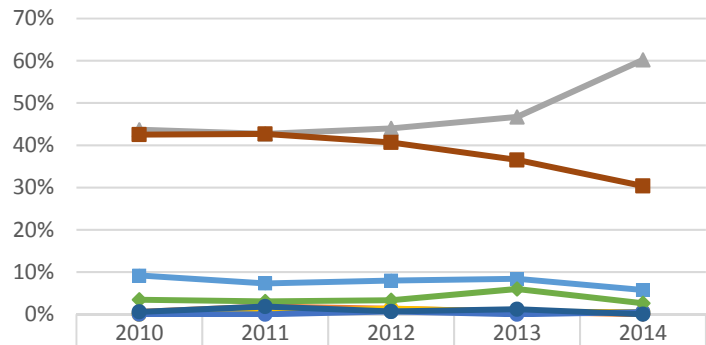


2015-2016 Program Review Datasheet Engineering

Section A - Enrollment and Student Demographics

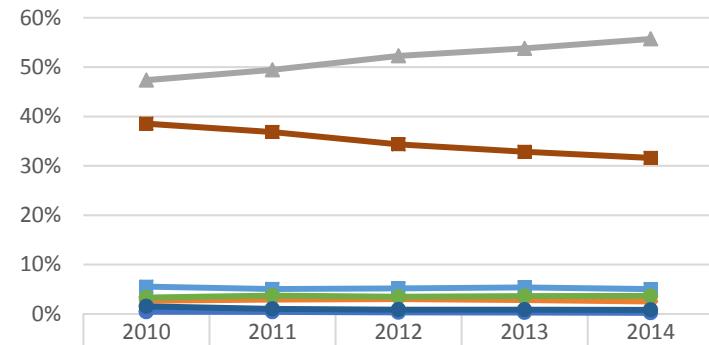


Student Ethnicity - Engineering



Ethnicity	2010	2011	2012	2013	2014
Asian	9.2%	7.3%	8.0%	8.4%	5.8%
Black	0.6%	1.8%	1.3%	0.6%	0.0%
Hispanic	43.7%	42.7%	44.0%	46.7%	60.2%
Native Amer	0.0%	0.6%	1.3%	0.6%	0.5%
Pac Island	0.0%	0.0%	0.7%	0.0%	0.5%
Two or More	3.4%	3.0%	3.3%	6.0%	2.6%
Unknown	0.6%	1.8%	0.7%	1.2%	0.0%
White	42.5%	42.7%	40.7%	36.5%	30.4%

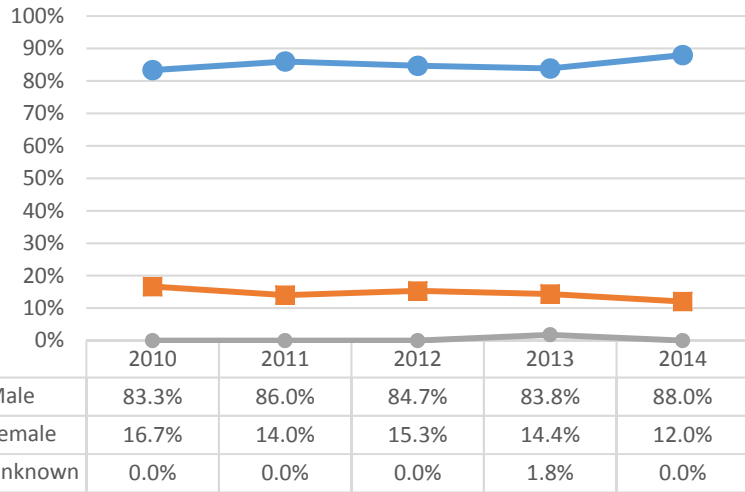
Student Ethnicity - Ventura College



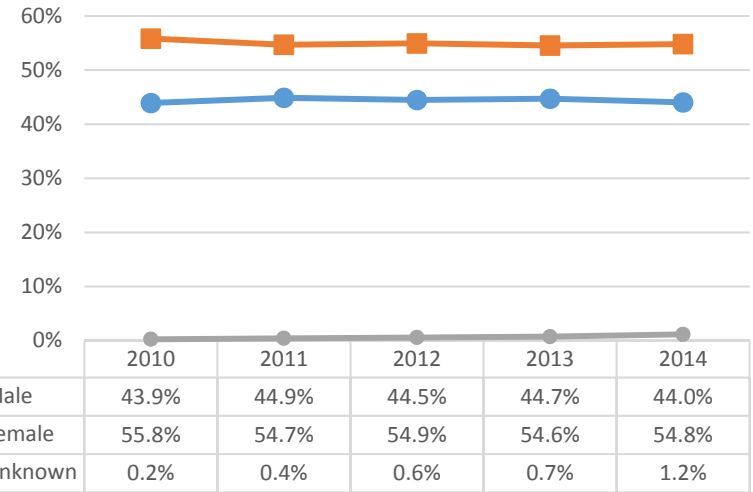
Ethnicity	2010	2011	2012	2013	2014
Asian	5.5%	5.1%	5.2%	5.4%	5.0%
Black	2.7%	2.9%	3.0%	2.8%	2.5%
Hispanic	47.4%	49.4%	52.3%	53.8%	55.7%
Native Amer	0.6%	0.6%	0.5%	0.4%	0.4%
Pac Island	0.4%	0.4%	0.3%	0.3%	0.2%
Two or More	3.3%	3.7%	3.5%	3.6%	3.6%
Unknown	1.5%	1.0%	0.9%	0.9%	0.8%
White	38.5%	36.8%	34.4%	32.8%	31.6%

2015-2016 Program Review Datasheet Engineering

Student Gender - Engineering

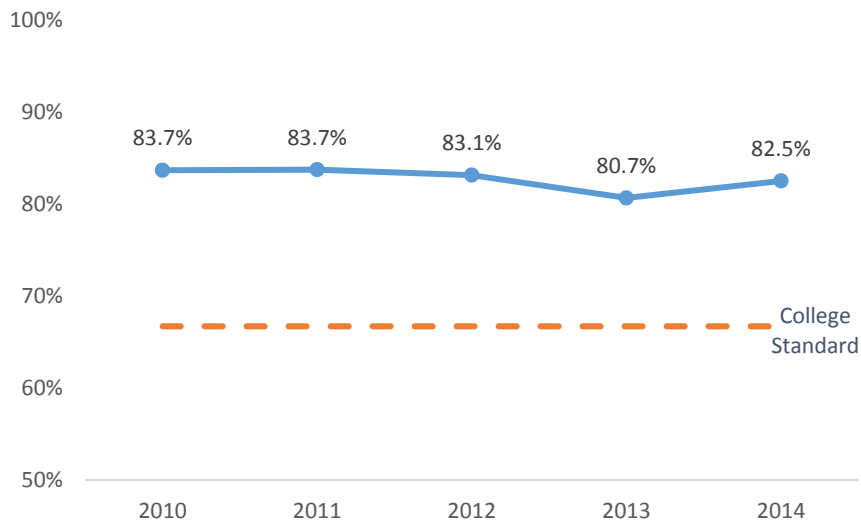


Student Gender - Ventura College

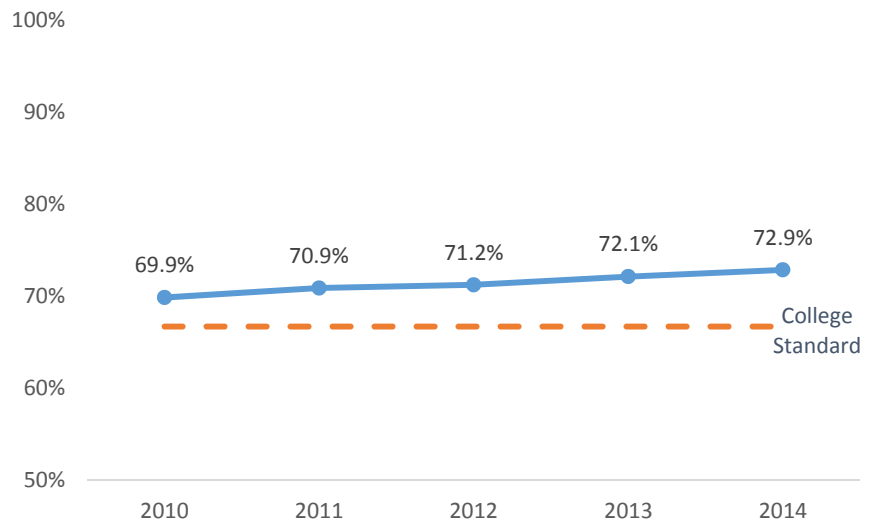


Section B - Course Success Rate

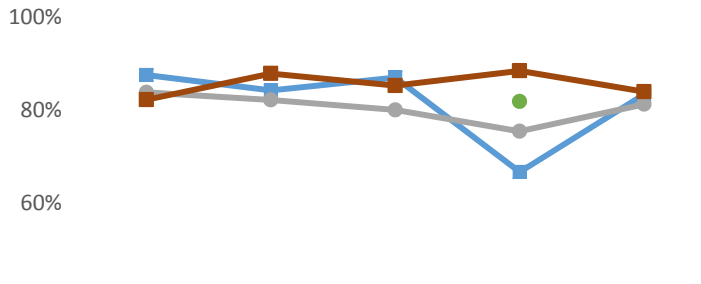
Course Success Rate - Engineering



Course Success Rate - Ventura College

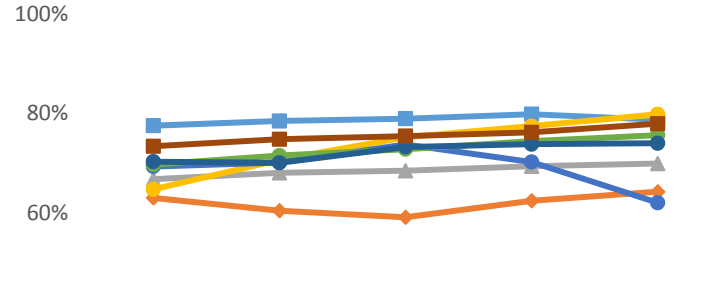


Course Success Rate by Ethnicity - Engineering*



	2010	2011	2012	2013	2014
Asian	87.5%	84.2%	87.0%	66.7%	83.3%
Black					
Hispanic	83.8%	82.1%	80.0%	75.4%	81.2%
Native Amer					
Pac Island					
Two or More				81.8%	
Unknown					
White	82.2%	87.8%	85.2%	88.4%	83.9%

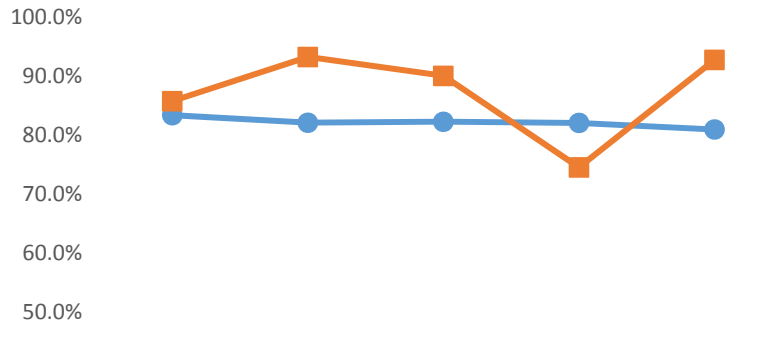
Course Success Rate by Ethnicity - Ventura College



	2010	2011	2012	2013	2014
Asian	77.6%	78.5%	79.0%	79.9%	78.8%
Black	63.1%	60.5%	59.2%	62.5%	64.3%
Hispanic	66.8%	68.1%	68.5%	69.4%	70.0%
Native Amer	64.8%	70.7%	75.2%	77.5%	79.8%
Pac Island	69.4%	70.2%	73.8%	70.3%	62.1%
Two or More	69.8%	71.6%	72.8%	74.5%	75.7%
Unknown	70.3%	70.1%	73.3%	73.8%	74.0%
White	73.4%	74.8%	75.5%	76.2%	78.0%

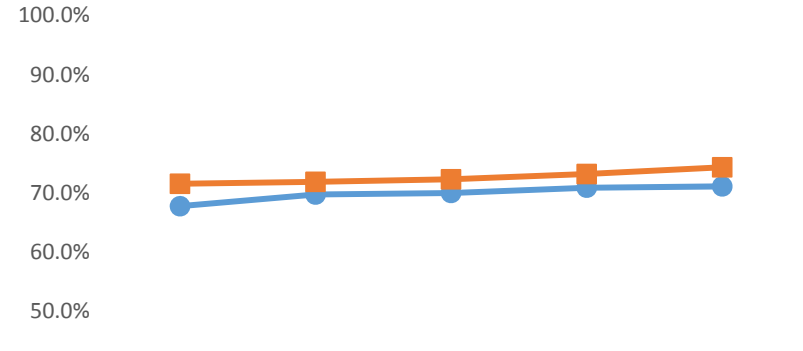
*Ethnicity data only displayed for cells with 10 or more students

Course Success Rate by Gender - Engineering



	2010	2011	2012	2013	2014
Male	83.3%	82.1%	82.2%	82.0%	80.9%
Female	85.7%	93.2%	90.0%	74.5%	92.7%

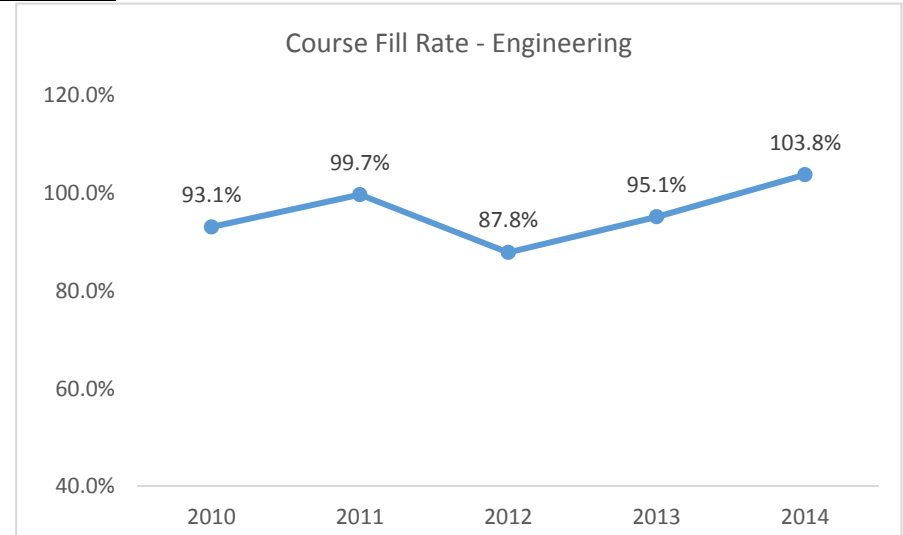
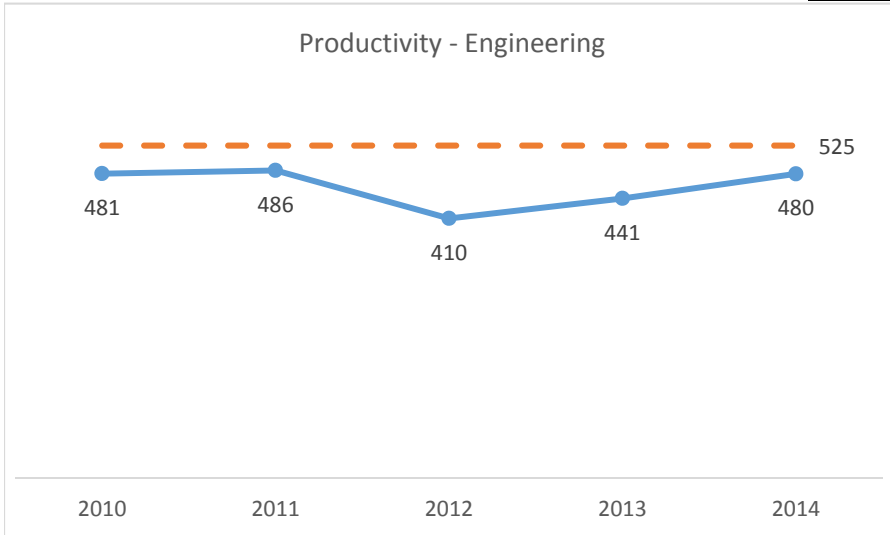
Course Success Rate by Gender - Ventura College



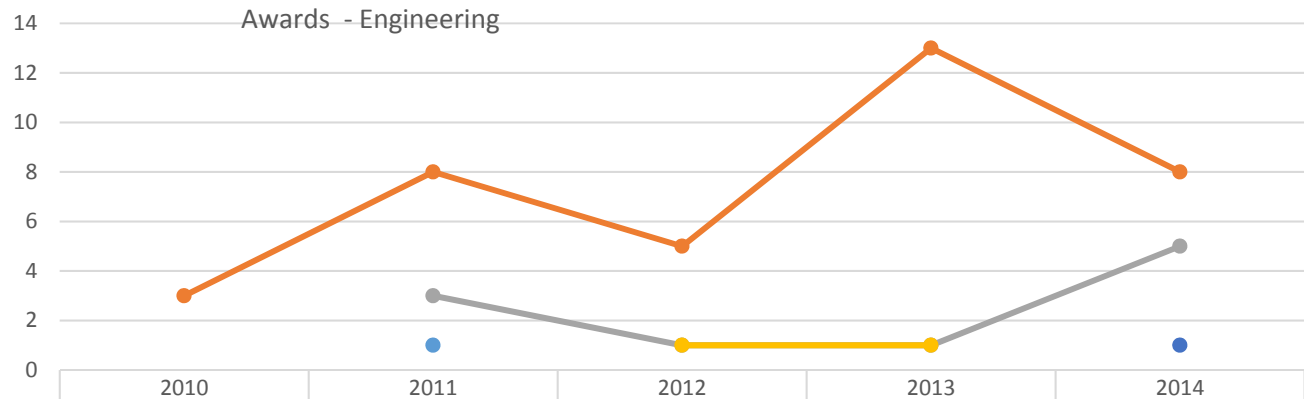
	2010	2011	2012	2013	2014
Male	67.8%	69.8%	70.0%	70.9%	71.1%
Female	71.6%	71.9%	72.3%	73.2%	74.3%

Engineering

Section C - Productivity



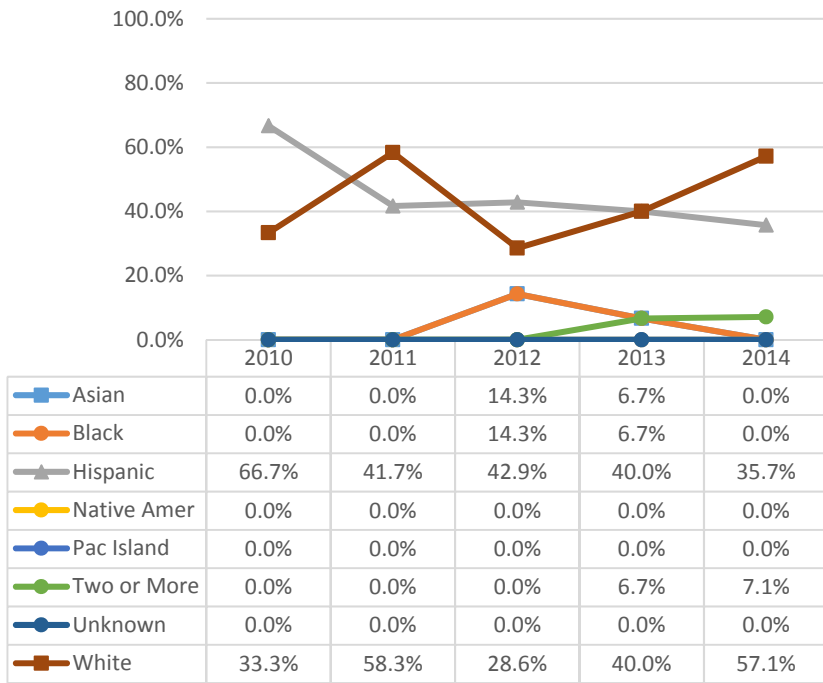
Section D - Degrees and Certificates Awarded



	2010	2011	2012	2013	2014
Engineering Associate in Arts		1			
Engineering Associate in Science	3	8	5	13	8
Engineering Certificate/30 - 59.5 units		3	1	1	5
General Engineering Technology Associate in Science			1	1	
General Engineering Technology Certificate/30 - 59.5 units					1

2015-2016 Program Review Datasheet Engineering

Awards by Ethnicity - Engineering



Awards by Gender - Engineering

