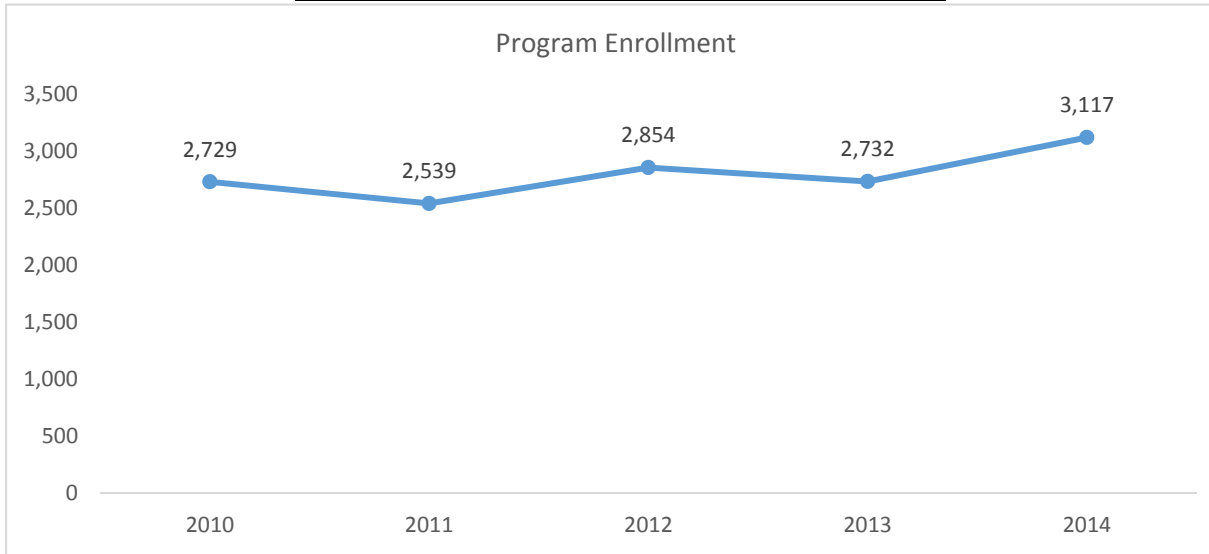


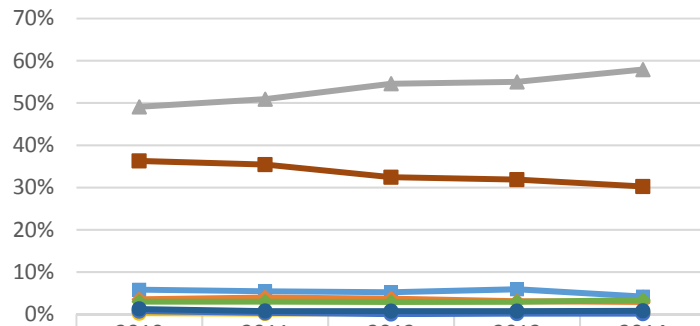
# 2015-2016 Program Review Datasheet

## Accounting and Business

### Section A - Enrollment and Student Demographics

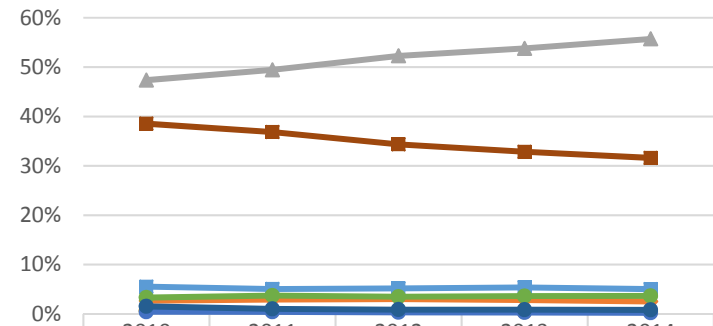


#### Student Ethnicity - Accounting and Business



	2010	2011	2012	2013	2014
Asian	5.8%	5.4%	5.2%	5.9%	4.2%
Black	3.5%	4.0%	3.7%	3.1%	2.9%
Hispanic	49.1%	50.9%	54.6%	55.0%	57.9%
Native Amer	0.2%	0.2%	0.3%	0.3%	0.4%
Pac Island	0.7%	0.3%	0.0%	0.2%	0.1%
Two or More	3.0%	3.0%	2.9%	2.9%	3.3%
Unknown	1.2%	0.8%	0.7%	0.7%	0.8%
White	36.3%	35.4%	32.4%	31.9%	30.2%

#### Student Ethnicity - Ventura College

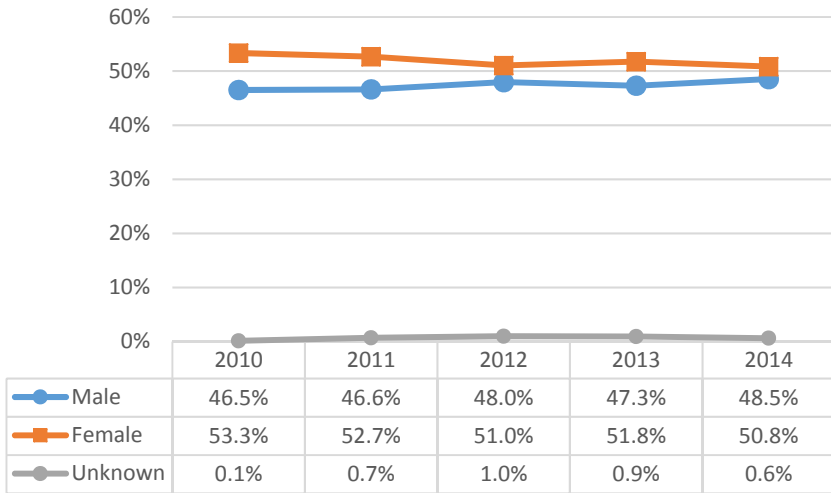


	2010	2011	2012	2013	2014
Asian	5.5%	5.1%	5.2%	5.4%	5.0%
Black	2.7%	2.9%	3.0%	2.8%	2.5%
Hispanic	47.4%	49.4%	52.3%	53.8%	55.7%
Native Amer	0.6%	0.6%	0.5%	0.4%	0.4%
Pac Island	0.4%	0.4%	0.3%	0.3%	0.2%
Two or More	3.3%	3.7%	3.5%	3.6%	3.6%
Unknown	1.5%	1.0%	0.9%	0.9%	0.8%
White	38.5%	36.8%	34.4%	32.8%	31.6%

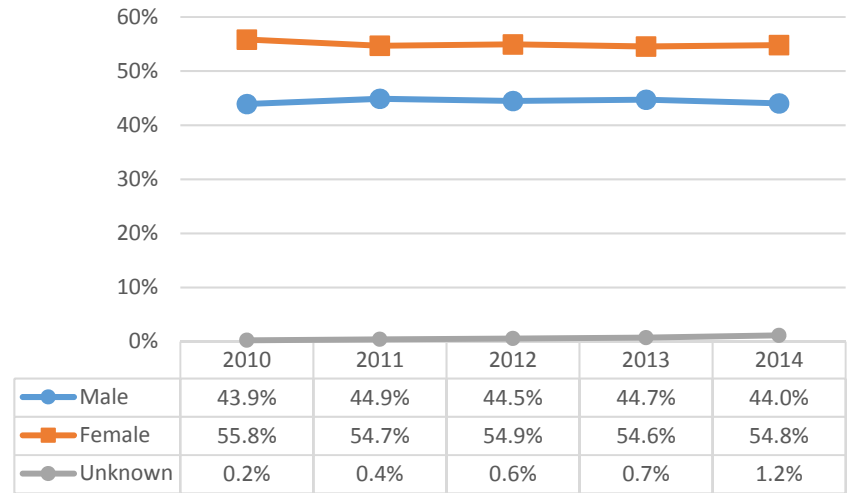


## 2015-2016 Program Review Datasheet Accounting and Business

Student Gender - Accounting and Business

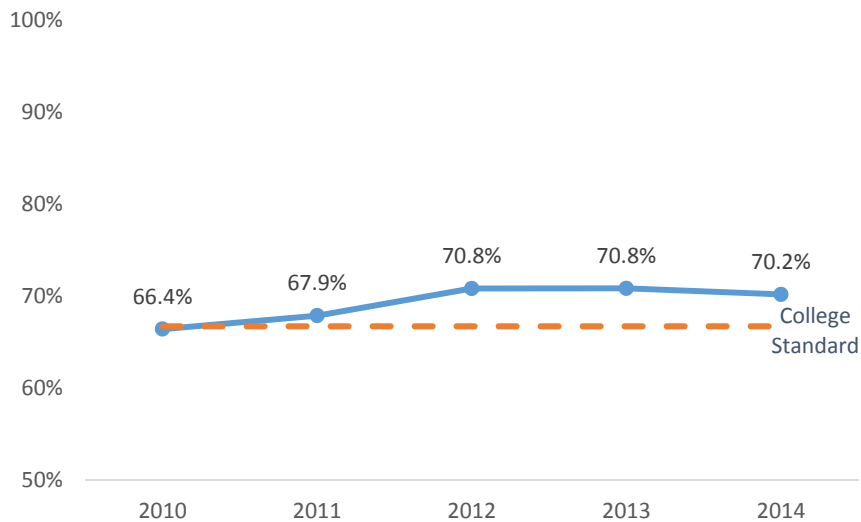


Student Gender - Ventura College

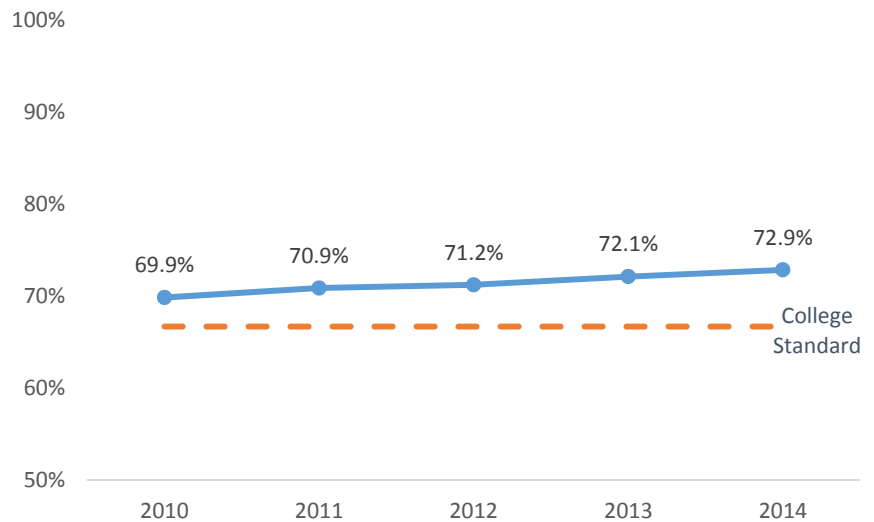


### Section B - Course Success Rate

Course Success Rate - Accounting and Business

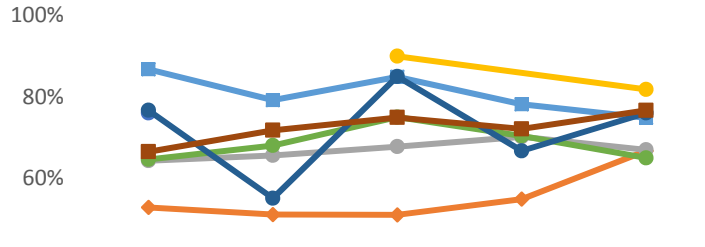


Course Success Rate - Ventura College



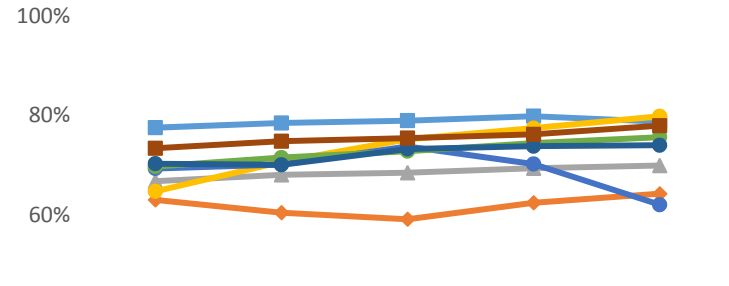
## 2015-2016 Program Review Datasheet Accounting and Business

### Course Success Rate by Ethnicity - Accounting and Business



	2010	2011	2012	2013	2014
Asian	86.8%	79.2%	84.9%	78.1%	74.8%
Black	52.7%	51.0%	50.9%	54.8%	66.7%
Hispanic	64.3%	65.6%	67.7%	70.1%	66.9%
Native Amer			90.0%		81.8%
Pac Island	76.0%				
Two or More	64.6%	68.0%	75.0%	70.4%	64.9%
Unknown	76.7%	55.0%	85.0%	66.7%	76.0%
White	66.5%	71.7%	74.9%	72.1%	76.6%

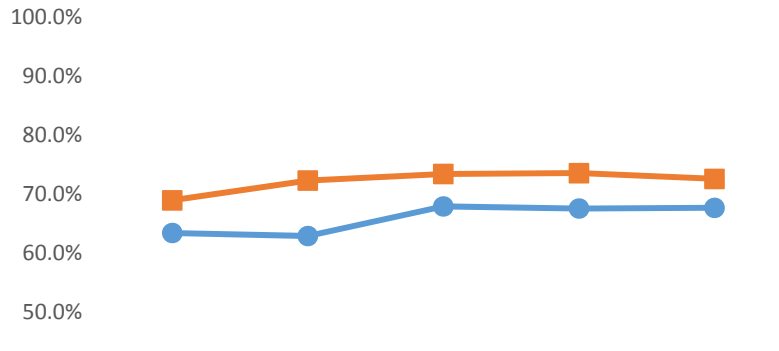
### Course Success Rate by Ethnicity - Ventura College



	2010	2011	2012	2013	2014
Asian	77.6%	78.5%	79.0%	79.9%	78.8%
Black	63.1%	60.5%	59.2%	62.5%	64.3%
Hispanic	66.8%	68.1%	68.5%	69.4%	70.0%
Native Amer	64.8%	70.7%	75.2%	77.5%	79.8%
Pac Island	69.4%	70.2%	73.8%	70.3%	62.1%
Two or More	69.8%	71.6%	72.8%	74.5%	75.7%
Unknown	70.3%	70.1%	73.3%	73.8%	74.0%
White	73.4%	74.8%	75.5%	76.2%	78.0%

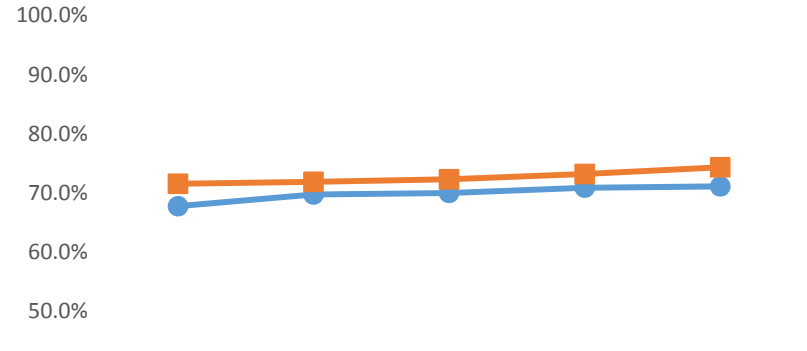
\*Ethnicity data only displayed for cells with 10 or more students

### Course Success Rate by Gender - Accounting and Business



	2010	2011	2012	2013	2014
Male	63.4%	62.9%	67.9%	67.6%	67.7%
Female	68.9%	72.3%	73.4%	73.5%	72.6%

### Course Success Rate by Gender - Ventura College



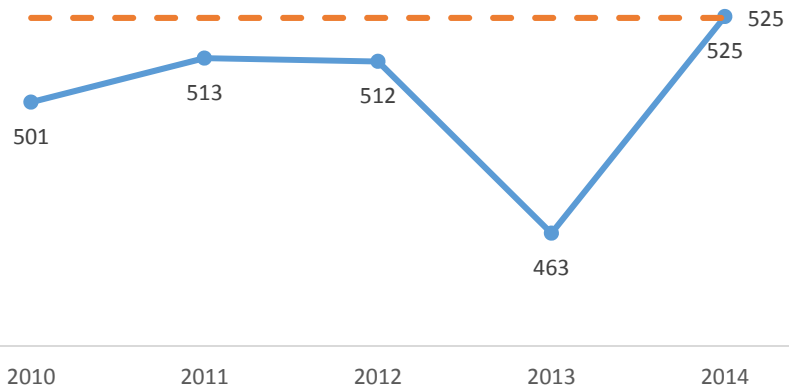
	2010	2011	2012	2013	2014
Male	67.8%	69.8%	70.0%	70.9%	71.1%
Female	71.6%	71.9%	72.3%	73.2%	74.3%

## 2015-2016 Program Review Datasheet

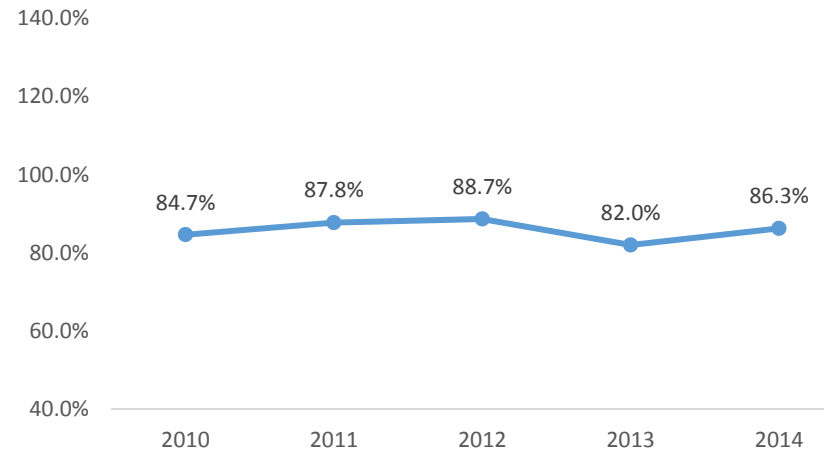
### Accounting and Business

#### Section C - Productivity

Productivity - Accounting and Business

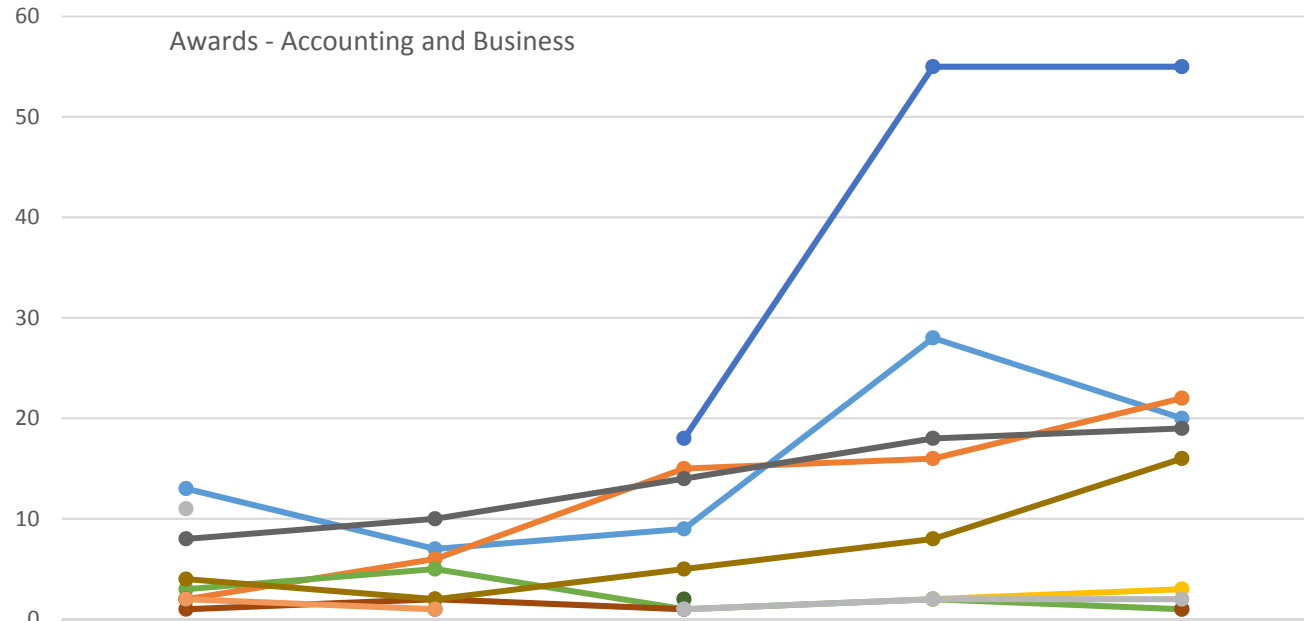


Course Fill Rate - Accounting and Business



## 2015-2016 Program Review Datasheet Accounting and Business

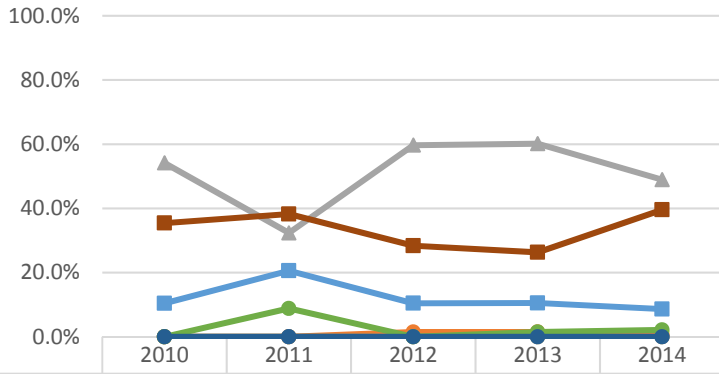
### Section D - Degrees and Certificates Awarded



	2010	2011	2012	2013	2014
Accounting Associate in Science	13	7	9	28	20
Accounting Certificate/30 - 59.5 units	2	6	15	16	22
Administrative Assistant Associate in Science	11	10	14	18	19
Administrative Assistant Certificate/18 - 29.5 units	0	0	0	2	3
Business Admin CSU Transfer Assoc in Science for Transfer	0	0	18	55	55
Business Associate in Science	3	5	1	2	1
Business Business Management Associate in Science	0	1	0	0	0
Business Certificate/30 - 59.5 units	1	2	1	0	1
Business Management Associate in Science	8	10	14	18	19
Business Management Certificate/30 - 59.5 units	4	2	5	8	16
Business-Marketing Associate in Science	2	0	0	0	0
Executive Assistant Associate in Science	2	0	2	0	0
Executive Assistant Certificate/18 - 29.5 units	0	0	1	0	0
Supervision Associate in Science	2	1	0	2	0
Supervision Certificate/18 - 29.5 units	11	0	1	2	2

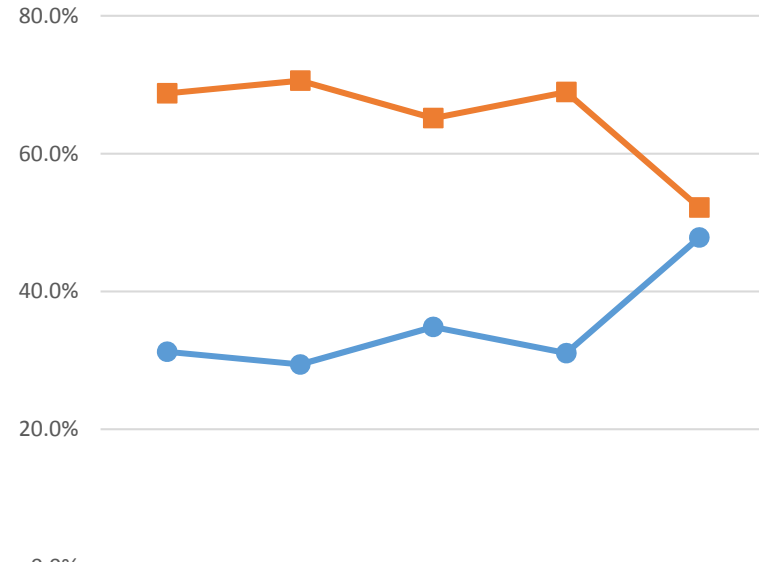
## 2015-2016 Program Review Datasheet Accounting and Business

### Awards by Ethnicity - (Multiple Items)



Asian	10.4%	20.6%	10.4%	10.5%	8.6%
Black	0.0%	0.0%	1.5%	1.5%	0.7%
Hispanic	54.2%	32.4%	59.7%	60.2%	48.9%
Native Amer	0.0%	0.0%	0.0%	0.0%	0.0%
Pac Island	0.0%	0.0%	0.0%	0.0%	0.0%
Two or More	0.0%	8.8%	0.0%	1.5%	2.2%
Unknown	0.0%	0.0%	0.0%	0.0%	0.0%
White	35.4%	38.2%	28.4%	26.3%	39.6%

### Awards by Gender - (Multiple Items)



Male	31.3%	29.4%	34.8%	31.1%	47.8%
Female	68.8%	70.6%	65.2%	68.9%	52.2%